

Submit 1 Copy To Appropriate District

|                                                                                                                                                                                                                                                                                                             |                                                                                                                                                    |                                     |
|-------------------------------------------------------------------------------------------------------------------------------------------------------------------------------------------------------------------------------------------------------------------------------------------------------------|----------------------------------------------------------------------------------------------------------------------------------------------------|-------------------------------------|
| Office<br>District I – (575) 393-6161<br>1625 N. French Dr., Hobbs, NM 88240<br>District II – (575) 748-1283<br>811 S. First St., Artesia, NM 88210<br>District III – (505) 334-6178<br>1000 Rio Brazos Rd., Aztec, NM 87410<br>District IV – (505) 476-3460<br>1220 S. St. Francis Dr., Santa Fe, NM 87505 | State of New Mexico<br>Energy, Minerals and Natural Resources<br><br>OIL CONSERVATION DIVISION<br>1220 South St. Francis Dr.<br>Santa Fe, NM 87505 | Form C-103<br>Revised July 18, 2013 |
|-------------------------------------------------------------------------------------------------------------------------------------------------------------------------------------------------------------------------------------------------------------------------------------------------------------|----------------------------------------------------------------------------------------------------------------------------------------------------|-------------------------------------|

|                                                                                                                                                                                                               |  |                                                                                            |
|---------------------------------------------------------------------------------------------------------------------------------------------------------------------------------------------------------------|--|--------------------------------------------------------------------------------------------|
| <b>SUNDRY NOTICES AND REPORTS ON WELLS</b><br>(DO NOT USE THIS FORM FOR PROPOSALS TO DRILL OR TO DEEPEN OR PLUG BACK TO A DIFFERENT RESERVOIR. USE "APPLICATION FOR PERMIT" (FORM C-101) FOR SUCH PROPOSALS.) |  | WELL API NO.<br>30-015-02138                                                               |
| 1. Type of Well: Oil Well <input checked="" type="checkbox"/> Gas Well <input type="checkbox"/> Injection Well <input type="checkbox"/>                                                                       |  | 5. Indicate Type of Lease<br>STATE <input type="checkbox"/> X FEE <input type="checkbox"/> |
| 2. Name of Operator<br>State of New Mexico formerly Canyon E&P Company                                                                                                                                        |  | 6. State Oil & Gas Lease No.<br>648                                                        |
| 3. Address of Operator<br>1625 N. French Drive, Hobbs, N 88240                                                                                                                                                |  | 7. Lease Name or Unit Agreement Name<br>Artesia Metex Unit                                 |
| 4. Well Location<br>Unit Letter <u>F</u> : <u>1650</u> feet from the <u>N</u> line and <u>2310</u> feet from the <u>W</u> line<br>Section <u>30</u> Township <u>18S</u> Range <u>28E</u> NMPM Eddy County     |  | 8. Well Number. 042                                                                        |
| 11. Elevation (Show whether DR, RKB, RT, GR, etc.)<br>GL: 3564'                                                                                                                                               |  | 9. OGRID Number<br>269864                                                                  |
|                                                                                                                                                                                                               |  | 10. Pool name or Wildcat<br>Artesia QU-GB-SA                                               |

## 12. Check Appropriate Box to Indicate Nature of Notice, Report or Other Data

## NOTICE OF INTENTION TO:

PERFORM REMEDIAL WORK ☐ PLUG AND ABANDON ☐  
 TEMPORARILY ABANDON ☐ CHANGE PLANS ☐  
 PULL OR ALTER CASING ☐ MULTIPLE COMPL ☐  
 DOWNHOLE COMMINGLE ☐  
 CLOSED-LOOP SYSTEM ☐  
 OTHER: ☐

## SUBSEQUENT REPORT OF:

REMEDIAL WORK ☐ ALTERING CASING ☐  
 COMMENCE DRILLING OPNS. ☐ P AND A ☒ X  
 CASING/CEMENT JOB ☐  
 OTHER: ☐

13. Describe proposed or completed operations. (Clearly state all pertinent details, and give pertinent dates, including estimated date of starting any proposed work). SEE RULE 19.15.7.14 NMAC. For Multiple Completions: Attach wellbore diagram of proposed completion or recompletion.

5/4/23. MOL. Check well pressures, no pressure on well, RU relief lines and open well to pit. Spot equipment onto location. Dig around wellhead to try to locate BH, no BH or casing connections found. Start to remove swedge from well connection and load well with water. Cut connection to connect flange to casing w/ torch. Flange up and SDFD.

5/5/23. Held JSA. Check well pressures, no pressure, open well to pit. RU A+ WL, RIH w/ 6.25" GRJB, tag @ 310', POOH and change to 5.625" GRJB, RIH tag again @ 310'. POOH and change to 3.25" GRJB, RIH and tag yet again @ 310'. Call for orders, received instructions to drill. Order drill equipment and await for verification of availability. SDFN.

5/9/23. Held JSA. Check well pressures, no pressure, open well to pit. Start equipment and check for H2S, no H2S detected. Spot and RU drilling equipment. Tally pipe and TIH w/ 6.25" impression block tag @ 320' w/ 2-3/8" WS, no impression on block, did receive sand back on tools. TOOHO w/ impression block. RU and TIH w/ BHA Fom Yellow Jacket bit. Circ well. Tubing plugged up, TOOHO and unplug tubing. TIH and continue to circ, moved down hole from 320' to 350'. Secure well and SDFD.

5/10/23. Held JSA. Check well pressure, no pressure, open well to pit. TIH w/ BHA 6 drill collars and 6.5" bit. RU power swivel, establish circ and start to drill @ 310', got down to 1500'. Tubing plugged up, TOOHO and clean tubing and clogged bit. TIH w/ bit and drill collars. Secure well and SDFD.

5/11/23. Held JSA. Check well pressures, no pressure, open well to pit. Start equipment and continue drilling. Drilled from 1500-1520' across the day. TOOHO and stand back all to check and remove Drill bit. Secure well and SDFD.

5/12/23. Held JSA. Check well pressures, no pressure, open well to pit. TIH w/ 6.5 mill and 5 drill collars, milled only 15' from 1520' to 1535'. TOOHO into casing and stand back 10 stands. Secure well and SDFD.

5/15/23. Held JSA. Check well pressures, no pressure, open well to pit. TIH w/ 6.5 mill and 5 drill collars, milled 15' from 1535' to 1550'. TOOHO and stand back to check on mill condition, mill was worn, called for new mill. Secure well and SDFD.

5/16/23. Held JSA. Check well pressures, no pressure, open well to pit. TIH w/ 6.5 junk mill. TIH to 1552' and established circ. Start milling, moved about 15' to 1569', received black water mud and some sand in returns. TOOHO and stand back to check mill, mill worn down. Secure well and SDFD.

5/17/23. Held JSA. Check well pressures, no pressure, open well to pit. LD drilling and milling equipment and RD power swivel. TIH to 1570', RU pump and establish circulation with salt gel.

Plug 1. 90 sxs of Type III cmt @ 14.8# 1.3 yield from 1570'-1220' (apvd by David Alvarado). PUH and WOC for 4.5 hrs. TIH and tag plug @ 1215'. PUH and LD to 880'. RU pump and establish circulation w/ salt gel.

Plug 2. 176 sxs of Type III cmt @ 14.8# 1.3 yield from 880' to 194'. POOH and LD tubing. WOC overnight. Secure well and SDFD.

5/18/23. Held JSA. Check well pressures, no pressure, open well to pit. TIH and tag Plug 2 @ 325'. TOOH and LD tubing. RU A+ WL, RIH and perf @ 150', RD WL. RU pump to casing to establish circulation.

Plug 3. 135 sxs of Type III cmt @ 14.8# 1.3 yield from 150' to surface. Topped off with 1 sx. Wash up and ND BOP. RD Rig and equipment. MOL and SDFN.

6/28/23: Travel to location. Dig out wellhead with backhoe. Cut off wellhead, TOC @ surface. Weld on Plug and Abandonment marker. Backfill wellhead cellar. MOL.

I hereby certify that the information above is true and complete to the best of my knowledge and belief.

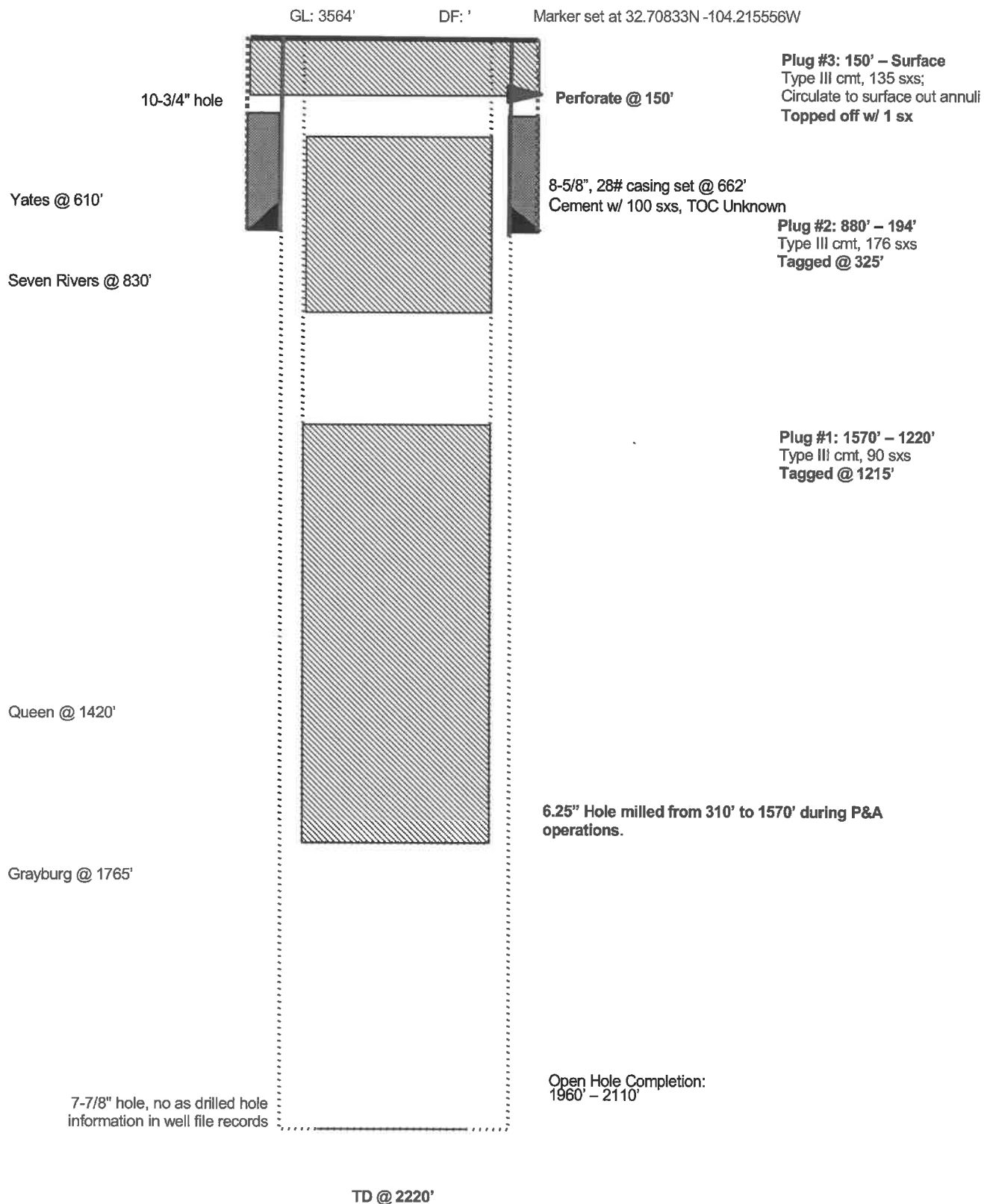
SIGNATURE *Neil Lindemeyer* TITLE Engineer Tech DATE 7/7/23

Type or print name Neil Lindemeyer E-mail address: nelledplusneil.com PHONE: 505-486 6950

**For State Use Only**

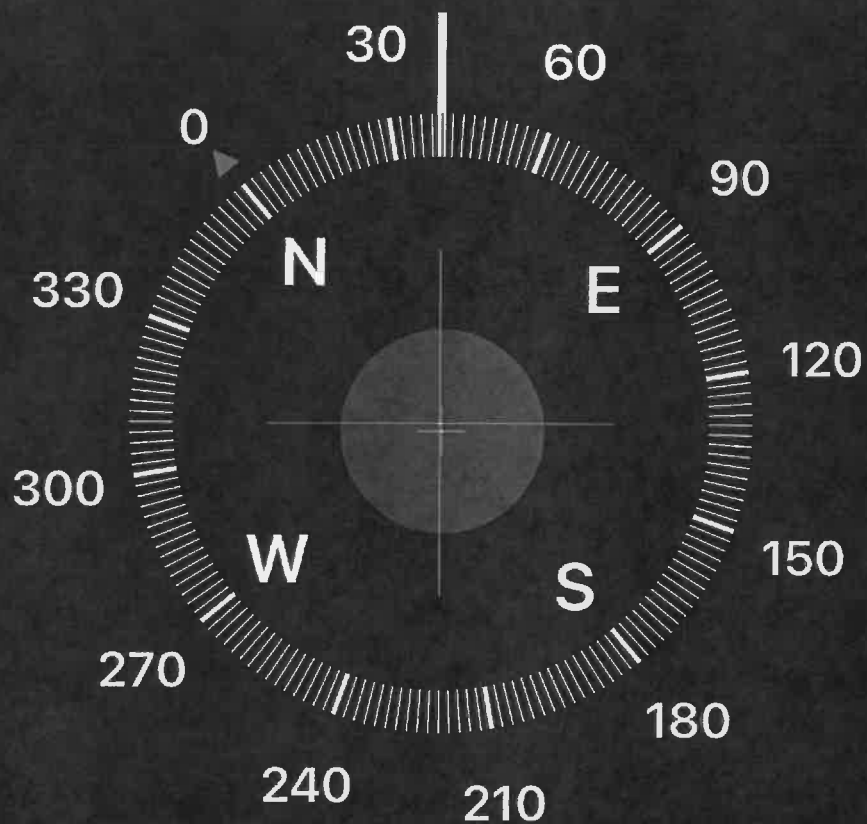
APPROVED BY: John Harrison TITLE Petroleum Specialist DATE 7/19/23

Conditions of Approval (if any):

**Artesia Metex Unit 042****As Plugged on 6/28/2023****Artesia Queen-Grayburg-San Andres****Unit F, 1650' FNL & 2310' FWL, Section 30, T18S, R28E****Eddy County, NM, API #30-015-02138**

11:53

5G



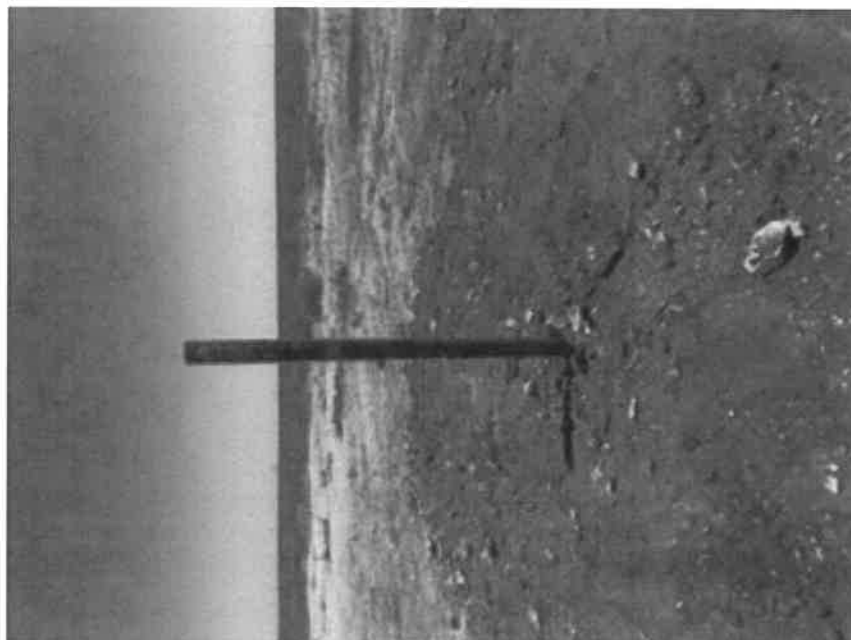
39° NE

32°43'15" N 104°12'56" W

Artesia, NM

3570 ft Elevation

ARTESIA METEX UNIT #42  
API: 30-015-02138





**District I**  
1625 N. French Dr., Hobbs, NM 88240  
Phone:(575) 393-6161 Fax:(575) 393-0720  
**District II**  
811 S. First St., Artesia, NM 88210  
Phone:(575) 748-1283 Fax:(575) 748-9720  
**District III**  
1000 Rio Brazos Rd., Aztec, NM 87410  
Phone:(505) 334-6178 Fax:(505) 334-6170  
**District IV**  
1220 S. St Francis Dr., Santa Fe, NM 87505  
Phone:(505) 476-3470 Fax:(505) 476-3462

State of New Mexico  
Energy, Minerals and Natural Resources  
Oil Conservation Division  
1220 S. St Francis Dr.  
Santa Fe, NM 87505

CONDITIONS

Action 237347

CONDITIONS

|                                                                                 |                                                |
|---------------------------------------------------------------------------------|------------------------------------------------|
| Operator:<br>A-PLUS WELL SERVICE, INC.<br>P.O. Box 1979<br>Farmington, NM 87499 | OGRID:<br>370317                               |
|                                                                                 | Action Number:<br>237347                       |
|                                                                                 | Action Type:<br>[C-103] Sub. Plugging (C-103P) |

CONDITIONS

|               |           |                |
|---------------|-----------|----------------|
| Created By    | Condition | Condition Date |
| john.harrison | None      | 7/19/2023      |