

Submit a Copy To Appropriate District  
Office  
District I – (575) 393-6161  
1625 N. French Dr., Hobbs, NM 88240  
District II – (575) 748-1283  
811 S. First St., Artesia, NM 88210  
District III – (505) 334-6178  
1000 Rio Brazos Rd., Aztec, NM 87410  
District IV – (505) 476-3460  
1220 S. St. Francis Dr., Santa Fe, NM  
87505

State of New Mexico  
Energy, Minerals and Natural Resources

Form C-103  
Revised July 18, 2013

OIL CONSERVATION DIVISION  
1220 South St. Francis Dr.  
Santa Fe, NM 87505

WELL API NO. 30-025-03811
5. Indicate Type of Lease STATE <input checked="" type="checkbox"/> FEE <input type="checkbox"/>
6. State Oil & Gas Lease No.
7. Lease Name or Unit Agreement Name Lovington San Andres Unit
8. Well Number 41
9. OGRID Number 241333
10. Pool name or Wildcat Lovington; Grayburg-San Andres
4. Well Location Unit Letter <u>G</u> ; 1980 feet from the <u>North</u> line and 1980 feet from the <u>East</u> line Section <u>1</u> Township <u>17S</u> Range <u>36E</u> NMPM County <u>Lea</u>
11. Elevation (Show whether DR, RKB, RT, GR, etc.)

SUNDRY NOTICES AND REPORTS ON WELLS

(DO NOT USE THIS FORM FOR PROPOSALS TO DRILL OR TO DEEPEN OR PLUG BACK TO A DIFFERENT RESERVOIR. USE "APPLICATION FOR PERMIT" (FORM C-101) FOR SUCH PROPOSALS.)

1. Type of Well: Oil Well ☐ Gas Well ☒ Other Injector

2. Name of Operator  
Chevron Midcontinent, L.P.

3. Address of Operator  
6301 Deauville Blvd Midland, Texas 79706

12. Check Appropriate Box to Indicate Nature of Notice, Report or Other Data

NOTICE OF INTENTION TO:

PERFORM REMEDIAL WORK ☐ PLUG AND ABANDON ☐  
TEMPORARILY ABANDON ☐ CHANGE PLANS ☐  
PULL OR ALTER CASING ☐ MULTIPLE COMPL ☐  
DOWNHOLE COMMINGLE ☐  
CLOSED-LOOP SYSTEM ☐  
OTHER: ☐

SUBSEQUENT REPORT OF:

REMEDIAL WORK ☐ ALTERING CASING ☐  
COMMENCE DRILLING OPNS. ☐ P AND A ☒  
CASING/CEMENT JOB ☐  
OTHER: ☐

13. Describe proposed or completed operations. (Clearly state all pertinent details, and give pertinent dates, including estimated date of starting any proposed work). SEE RULE 19.15.7.14 NMAC. For Multiple Completions: Attach wellbore diagram of proposed completion or recompletion.

See attached plugging report and as plugged wellbore diagram.

Spud Date:

Rig Release Date:

I hereby certify that the information above is true and complete to the best of my knowledge and belief.

SIGNATURE Mark Torres TITLE P&A Engineer DATE 8/12/2023

Type or print name Mark Torres E-mail address: marktorres@chevron.com PHONE: 989-264-2525

**For State Use Only**

APPROVED BY: [Signature] TITLE Petroleum Specialist DATE 8/15/23

Conditions of Approval (if any):

## As Plugged Wellbore Diagram

Created:	04/24/19	By:		Well #:	41	St. Lse:	
Updated:		By:		API	30-025-03811		
Lease:	Lovington San Andres Unit			Unit Ltr.:	G	Section:	1
Field:	Lovington			TSHP/Rng:	17S-36E		
Surf. Loc.:	1980 FNL & 1980 FEL			Unit Ltr.:		Section:	
Bot. Loc.:				TSHP/Rng:			
County:	Lea	St.:	NM	Directions:	Lovington, NM		
Status:				Cheveno:	FA4958		

## H2S in Area

## Surface Casing

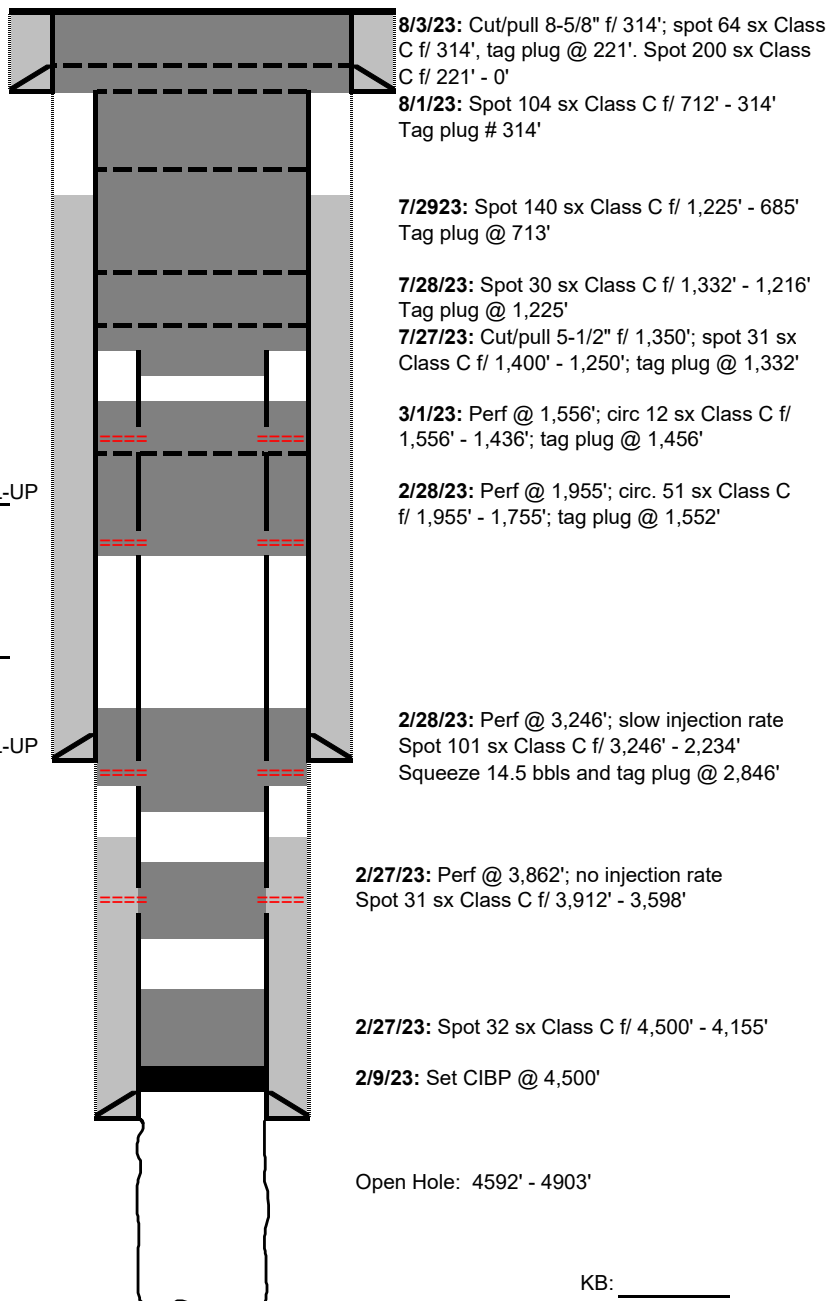
Size: 13"  
 Wt., Grd.: 40#  
 Depth: 314'  
 Sxs Cmt: 250  
 Circulate: Yes  
 TOC: Surface  
 Hole Size: 17-1/4"

## Intermediate Casing

Size: 8-5/8"  
 Wt., Grd.: 32#  
 Depth: 3100'  
 Sxs Cmt: 250  
 Circulate: No  
 TOC: 2057 100% FILL-UP  
 Hole Size: 11"

## Production Casing

Size: 5-1/2"  
 Wt., Grd.: 17#  
 Depth: 4592'  
 Sxs Cmt: 200  
 Circulate: No  
 TOC: 3980 100% FILL-UP  
 Hole Size: 7-7/8"



PBTD(est.):  
 TD: 4,903  
 Deepened:

KB:  
 DF: 3,835  
 GL:  
 Ini. Spud: 08/11/39  
 Ini. Comp.: 09/17/39



P&A Operations Summary - External

Well Name LOVINGTON SAN ANDRES UNIT 41	Field Name Lovington	Lease Lovington San Andres Unit	Area Central Permian
Business Unit Mid-Continent	County/ Parish Lea	Global Metrics Region Lower 48	Surface UWI 3002503811
Basic Well Data			
Current RKB Elevation 3,836.00, 2/9/2023	Original RKB Elevation (ft) 3,836.00	Latitude (°) 32° 51' 56.7" N	Longitude (°) 103° 18' 18.864" W
Daily Operations			
Start Date	Summary		
2/7/2023	Moved WSU and cement equipment from LPU 59. MIRU. Checked pressure's and bled down alls trings. Attempt to pressure test casing 1000 psi leaked off 100 psi per min csg test failed. Established injection rate had small flow out of casing unable to BHD cement.		
2/8/2023	RU Apollo Perfortions INC to perf/cut 2 3/8 IPC TBG w/ 1 3/8 Perf/Cutter, Circulate Well Bore Clean, ND WH, NU BOP, Release Pkr/Cut TBG, LD 2 3/8 IPC Production TBG		
2/9/2023	Review JSA, Check PSI, Spot In WireLine Unit, RU WireLine, PU 5.5 CIBP, RIH WL w/CIBP to 4500 +-, Set CIBP, POH WL, LD WL, Load and Test Plug. ND BOP, NU B-1 Adapter Flange, RD P&A Equipment, Secure Equipment		
2/27/2023	MIRU CTU, test BOP & lubricator 250psi for 5 min & 1000psi for 10min. Open well test casing to 1000psi for 15min, TIH with 1 9/16 6 spf/60 degree phase 12 shot, Perforate @3862', EIR well pressure up to 1000psi for 5 min. TIH tag CIBP @4479' CTM, Pump 22bbl MLF, Spot 32 sx class C cement from 4479'-4155', TOH to 3912', Spot 31 sx class C cement from 3912'-3598', TOH with CTU.		
2/28/2023	JSA SWC SIF, Review tenet 8, 0psi on all strings, Test BOP 250psi low 5min & 1000psi for 10min, Open well test casing & cement plug 1000psi 15min, TIH Perf. @3246'with 1 9/16 6 spf/60 degree phase 12 shot, Attempt to establish circulation pimped 15bbl brine total Pressures fluctuating from 750psi-1000psi @.3 to .5 BPM with .1 BPM or less returns, TIH tag TOC @3628', TOH to 3246', Pump 101 sx class C from 3246'-2234', POH pump 14.5bbl displacement leaving TTOC @2815', Flush equipment, WOC, Pressure test cement plug 1000psi for 5min held, TIH with 1 9/16 18 spf/20 degree phase 12.6 shot deep penetrators perf. @1955', Pump down Production casing circulate up intermediate with slow returns pump 140bbl brine, TIH tag TOC @2846' TOH, RD injection head (before high wind comes in), Wait on vack truck to load brine, Pimp 120bbl brine to clean up intermediate casing, Pump 51 sx class C from 1955'-1755' CIW with 500psi on well flush equipment, CIW debrief,		
3/1/2023	JSA SWC SIF held safety meeting, Review tenet 1, 500psi on production & 500psi on intermediate, Test BOP 250psi low 5min & 1000psi for 10min, Open well test casing & cement plug 1000psi 15min, TIH perf. @365', Establish circ between 5 1/2" & 8 5/8", TIH tag TOC @1553' contact Mark Torres, TOH, with 1 9/16 18 spf/20 degree phase 12.6 shot deep penetrators perf. @1556', TOH, TIH with 1 9/16 18 spf/20 degree phase 12.6 shot deep penetrators perf. @1556', Pump 12 sx class C from 1556'-1436', TOH, Top off well with brine, Disp. with 1bbl, WOC, Got injection rate of 1 bpm @430psi, TIH, Tag TOC @1456', TOH, CIW debrief crew,		
3/1/2023	Review JSA, Check PSI, Spot In , RU E-line Unit for CBL, ND B-1 Adapter, NU Lubricator,RU Pump Truck Load and Test, Run CBL, TAG TOC, LOG from TOC to Surface, RD E-line and pump Truck. ND Lubricator, NU B-1 Adapter Flange		
7/25/2023	MOB to loc, JSA held safety meeting, Review tenet 5, Spot & set up Loc, Set new anchor, Rig up pulling unit, Debrief crew.		
7/26/2023	Perform morning meeting with crew discussed Heat, emergensey plans. Tenet # 6 Maintain integrity of dedicated systems. Tubing: No tbg. Production: 0 psi Intermediate: 0 psi Surface: 0 psi R/U pump & equipment. Fill csg with 10 BBL. Sunset RIH & cut 5 1/2" csg @ 1,350'. Knight's crew, N/D flange. Change out rig links and elevators. P/U 5 1/2" spear. Pull csg free. R/U Move in beams. R/U Butches csg equipment. Move in L/D machine. Secure well. Debrief.		
7/27/2023	Safety meeting. L/D 42 jts 5 1/2" csg. Trip in to 1,400'. Lay stump plug from 1400 to 1,250'. With 31 sx class c cmt. Trip out. Secure well.		
7/28/2023	Tag TOC @ 1332' with wire line. Run CBL from 1332 to surface. Lay 30 sk plug from 1332 to 1216. N/D 8 5/8 x 13" flange.		
7/29/2023	Trip in, tag TOC @ 1225 Circulate clean of oil with 100 bbl 10#. Trip out. Bubble test. 13" taking taking fluid, 8 5/8 fluid slowly taking fluid and few bubbles. Trip in Spot 140 sks Class C cmt from 1225 to 685 Trip out.		
7/31/2023	Bubble test. Failed C/O cellar. Cut off well head. Run scraper, tag TOC @ 713. Trip out.		
8/1/2023	Set 8 5/8 pkr @ 690 (TOC @ 712) 1/2 hr test fluid dropped 20' in tbg, 2" in 8 5/8. Pressure tbg to 500 psi, bleed off in 5 min to 0 Pull pkr out. Pump 104 sks class C cmt from 712' to 314' POOH.		
8/2/2023	Tag toc@ 314. Cut 8 5/8 @ 314. L/D 314' of 8 5/8" csg. Trip in and out with 13"scraper. Secure well.		
8/3/2023	Trip in to 314. Spot 64 sx class C 1.32 yield 14.8# ppg with 2 % CC WOC. tag TOC @ 221. Spot 200 sks class C cmt 1.32 yield 14.8# 221 to surface.		
8/4/2023	CMT to surface. R/D Ready equipment for long rig move.		

**District I**  
1625 N. French Dr., Hobbs, NM 88240  
Phone:(575) 393-6161 Fax:(575) 393-0720  
**District II**  
811 S. First St., Artesia, NM 88210  
Phone:(575) 748-1283 Fax:(575) 748-9720  
**District III**  
1000 Rio Brazos Rd., Aztec, NM 87410  
Phone:(505) 334-6178 Fax:(505) 334-6170  
**District IV**  
1220 S. St Francis Dr., Santa Fe, NM 87505  
Phone:(505) 476-3470 Fax:(505) 476-3462

State of New Mexico  
Energy, Minerals and Natural Resources  
Oil Conservation Division  
1220 S. St Francis Dr.  
Santa Fe, NM 87505

CONDITIONS

Action 251933

CONDITIONS

Operator: CHEVRON U S A INC 6301 Deauville Blvd Midland, TX 79706	OGRID: 4323
	Action Number: 251933
	Action Type: [C-103] Sub. Plugging (C-103P)

CONDITIONS

Created By	Condition	Condition Date
john.harrison	None - Well P&A'd 8/4/23	8/15/2023