

District I

1625 N. French Dr., Hobbs, NM 88240
Phone:(575) 393-6161 Fax:(575) 393-0720

District II

811 S. First St., Artesia, NM 88210
Phone:(575) 748-1283 Fax:(575) 748-9720

District III

1000 Rio Brazos Rd., Aztec, NM 87410
Phone:(505) 334-6178 Fax:(505) 334-6170

District IV

1220 S. St Francis Dr., Santa Fe, NM 87505
Phone:(505) 476-3470 Fax:(505) 476-3462

State of New Mexico
Energy, Minerals and Natural Resources
Oil Conservation Division
1220 S. St Francis Dr.
Santa Fe, NM 87505

Form C-101
August 1, 2011

Permit 347969

APPLICATION FOR PERMIT TO DRILL, RE-ENTER, DEEPEN, PLUGBACK, OR ADD A ZONE

1. Operator Name and Address AMEREDEV OPERATING, LLC 2901 Via Fortuna Austin, TX 78746		2. OGRID Number 372224
		3. API Number 30-025-51893
4. Property Code 320055	5. Property Name AMEN CORNER 26 36 27 STATE COM	6. Well No. 264H

7. Surface Location

UL - Lot P	Section 22	Township 26S	Range 36E	Lot Idn P	Feet From 230	N/S Line S	Feet From 955	E/W Line E	County Lea
---------------	---------------	-----------------	--------------	--------------	------------------	---------------	------------------	---------------	---------------

8. Proposed Bottom Hole Location

UL - Lot H	Section 34	Township 26S	Range 36E	Lot Idn 1	Feet From 50	N/S Line S	Feet From 990	E/W Line E	County Lea
---------------	---------------	-----------------	--------------	--------------	-----------------	---------------	------------------	---------------	---------------

9. Pool Information

WC-025 G-08 S263620C;LWR BONE SPRIN	98150
-------------------------------------	-------

Additional Well Information

11. Work Type New Well	12. Well Type OIL	13. Cable/Rotary	14. Lease Type State	15. Ground Level Elevation 2910
16. Multiple N	17. Proposed Depth 16960	18. Formation Bone Spring Lime	19. Contractor	20. Spud Date 11/1/2024
Depth to Ground water		Distance from nearest fresh water well		Distance to nearest surface water

☒ We will be using a closed-loop system in lieu of lined pits

21. Proposed Casing and Cement Program

Type	Hole Size	Casing Size	Casing Weight/ft	Setting Depth	Sacks of Cement	Estimated TOC
Surf	17.5	13.375	54.5	1994	1555	0
Int1	12.25	10.75	45.5	5146	1299	0
Prod	8.75	5.5	17	16960	5615	0

Casing/Cement Program: Additional Comments

--

22. Proposed Blowout Prevention Program

Type	Working Pressure	Test Pressure	Manufacturer
Double Ram	5000	5000	TBD

23. I hereby certify that the information given above is true and complete to the best of my knowledge and belief. I further certify I have complied with 19.15.14.9 (A) NMAC <input checked="" type="checkbox"/> and/or 19.15.14.9 (B) NMAC <input checked="" type="checkbox"/> if applicable.	OIL CONSERVATION DIVISION	
Signature:		
Printed Name: Electronically filed by Christie Hanna	Approved By: Paul F Kautz	
Title: Regulatory	Title: Geologist	
Email Address: channa@ameredev.com	Approved Date: 8/25/2023	Expiration Date: 8/25/2025
Date: 8/22/2023	Phone: 737-300-4723	Conditions of Approval Attached

District I
1625 N. French Dr., Hobbs, NM 88240
Phone: (575) 393-6161 Fax: (575) 393-0720
District II
811 S. First St., Artesia, NM 88210
Phone: (575) 748-1283 Fax: (575) 748-9720
District III
1000 Rio Brazos Road, Aztec, NM 87410
Phone: (505) 334-6178 Fax: (505) 334-6170
District IV
1220 S. St. Francis Dr., Santa Fe, NM 87505
Phone: (505) 476-3460 Fax: (505) 476-3462

State of New Mexico
Energy, Minerals & Natural Resources
Department
OIL CONSERVATION DIVISION
1220 South St. Francis Dr.
Santa Fe, NM 87505

FORM C-102
Revised August 1, 2011
Submit one copy to appropriate
District Office

☐ AMENDED REPORT

WELL LOCATION AND ACREAGE DEDICATION PLAT

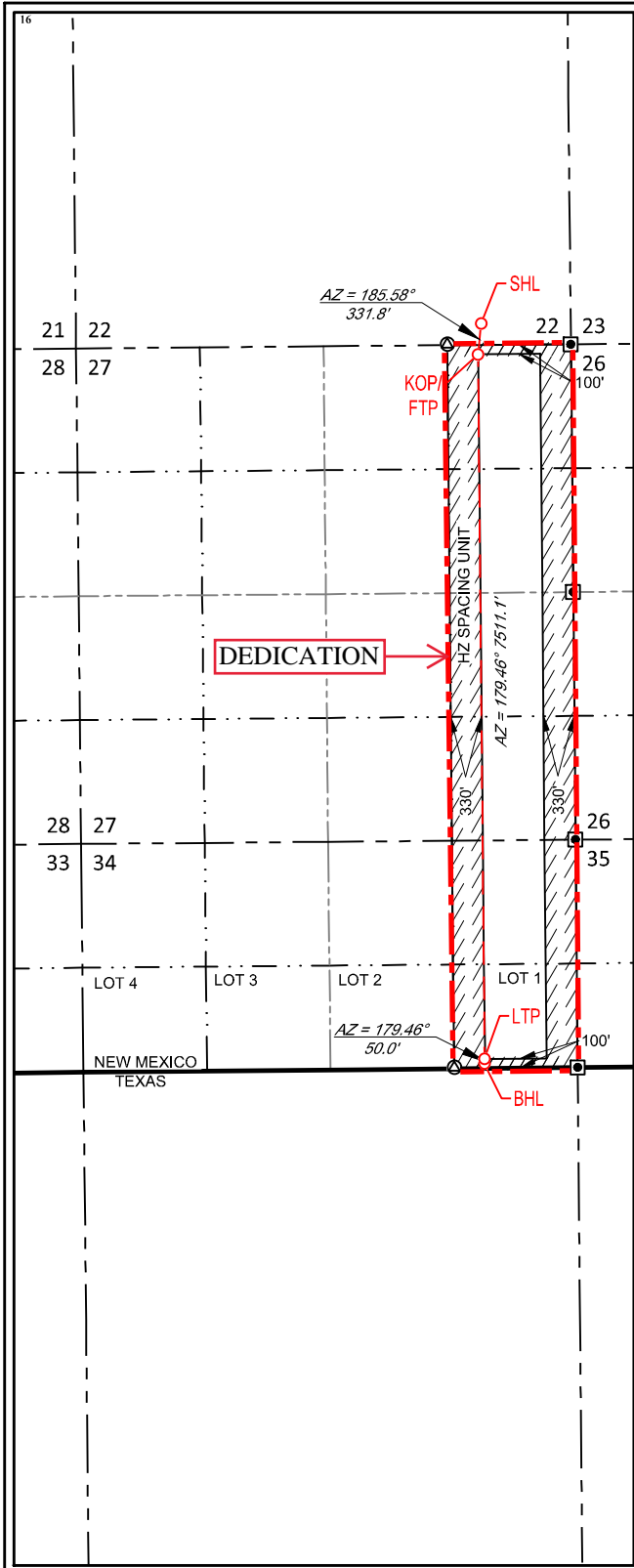
¹ API Number 30-025-	² Pool Code 98150	³ Pool Name WC-025 G-08 S263620C; LWR BONE SPRING
⁴ Property Code 320055	⁵ Property Name AMEN CORNER 26 36 27 STATE COM	
⁷ OGRID No. 372224	⁸ Operator Name AMEREDEV OPERATING, LLC.	⁶ Well Number 264H ⁹ Elevation 2910'

¹⁰ Surface Location									
UL or lot no. P	Section 22	Township 26-S	Range 36-E	Lot Idn -	Feet from the 230'	North/South line SOUTH	Feet from the 955'	East/West line EAST	County LEA

¹¹ Bottom Hole Location If Different From Surface									
UL or lot no. 1	Section 34	Township 26-S	Range 36-E	Lot Idn -	Feet from the 50'	North/South line SOUTH	Feet from the 990'	East/West line EAST	County LEA

¹² Dedicated Acres 233.61	¹³ Joint or Infill	¹⁴ Consolidation Code C	¹⁵ Order No.
---	-------------------------------	---------------------------------------	-------------------------

No allowable will be assigned to this completion until all interests have been consolidated or a non-standard unit has been approved by the division.



NEW MEXICO EAST NAD 1983 <u>SURFACE LOCATION (SHL)</u> 230' FSL - SEC. 22 955' FEL - SEC. 22 X=877825 Y=373487 LAT.: N 32.0221475 LONG.: W 103.2476164 <u>KICK OFF POINT (KOP)</u> <u>FIRST TAKE POINT (FTP)</u> 100' FNL - SEC. 27 990' FEL - SEC. 27 X=877792 Y=373156 LAT.: N 32.0212407 LONG.: W 103.2477312 <u>LAST TAKE POINT (LTP)</u> 100' FSL - SEC. 34 990' FEL - SEC. 34 X=877863 Y=365646 LAT.: N 32.0005953 LONG.: W 103.2477463 <u>BOTTOM HOLE LOCATION (BHL)</u> 50' FSL - SEC. 34 990' FEL - SEC. 34 X=877864 Y=365596 LAT.: N 32.0004579 LONG.: W 103.2477464
T-26-S, R-36-E SECTION 34 LOT 1 - 33.61 ACRES LOT 2 - 33.64 ACRES LOT 3 - 33.66 ACRES LOT 4 - 33.69 ACRES

¹⁷ OPERATOR CERTIFICATION <i>I hereby certify that the information contained herein is true and complete to the best of my knowledge and belief, and that this organization either owns a working interest or unleased mineral interest in the land including the proposed bottom hole location or has a right to drill this well at this location pursuant to a contract with an owner of such a mineral or working interest, or to a voluntary pooling agreement or a compulsory pooling order heretofore entered by the division.</i>	
 Signature	8/18/2023 Date
Floyd Hammond Printed Name	
fhammond@amereDEV.com E-mail Address	
¹⁸ SURVEYOR CERTIFICATION <i>I hereby certify that the well location shown on this plat was plotted from field notes of actual surveys made by me or under my supervision, and that the same is true to the best of my belief.</i>	
06/03/2023	
Date of Survey Signature and Seal of Professional Surveyor	
	
Certificate Number	

District I

1625 N. French Dr., Hobbs, NM 88240
 Phone:(575) 393-6161 Fax:(575) 393-0720

District II

811 S. First St., Artesia, NM 88210
 Phone:(575) 748-1283 Fax:(575) 748-9720

District III

1000 Rio Brazos Rd., Aztec, NM 87410
 Phone:(505) 334-6178 Fax:(505) 334-6170

District IV

1220 S. St Francis Dr., Santa Fe, NM 87505
 Phone:(505) 476-3470 Fax:(505) 476-3462

State of New Mexico
Energy, Minerals and Natural Resources
Oil Conservation Division
1220 S. St Francis Dr.
Santa Fe, NM 87505

Form APD Conditions

Permit 347969

PERMIT CONDITIONS OF APPROVAL

Operator Name and Address: AMEREDEV OPERATING, LLC [372224] 2901 Via Fortuna Austin, TX 78746	API Number: 30-025-51893
	Well: AMEN CORNER 26 36 27 STATE COM #264H

OCD Reviewer	Condition
pkautz	Notify OCD 24 hours prior to casing & cement
pkautz	Will require a File As Drilled C-102 and a Directional Survey with the C-104
pkautz	Once the well is spud, to prevent ground water contamination through whole or partial conduits from the surface, the operator shall drill without interruption through the fresh water zone or zones and shall immediately set in cement the water protection string
pkautz	Oil base muds are not to be used until fresh water zones are cased and cemented providing isolation from the oil or diesel. This includes synthetic oils. Oil based mud, drilling fluids and solids must be contained in a steel closed loop system
pkautz	Cement is required to circulate on both surface and intermediate1 strings of casing
pkautz	The Operator is to notify NMOCD by sundry (Form C-103) within ten (10) days of the well being spud
pkautz	IF ON ANY STRING CEMENT DOES NOT CIRCULATE, A RCBL MUST BE RUN ON THAT STRING OF CASING.

Amen Corner 26 36 27 State Com 264H

Avalon Lower | 1.5 Mile Lateral

County, St: Lea, NM

SHL: Section 22 , T26S , R36E

230' FSL, 955' FEL

BHL: Section 34 , T26S , R36E

50' FSL, 990' FEL

Wellhead: A - 13-5/8" 5M x 13-5/8" SOW

B - 13-5/8" 5M x 13-5/8" 5M

C - 13-5/8" 5M x 13-5/8" 5M

Tubing Spool: 7-1/16" 10M x 13-3/8" 5M

Xmas Tree: 2-9/16" 10M

Tubing: 3-1/2" L-80 6.5# 8rd EUE

Co. Well ID:

XXXXXX

AFE #:

2023-XXX

API #:

30-025-

Permit:

NMOC

GL:

2,910'

Field:

Delaware

Rig:

H&P 642

KB:

27.0'

Elevation:

2,937'

E-Mail:

drillingengineering@ameradev.com

Offsets:

General Notes	Hole Size	Casing & Cement	Geology	TVD	Mud Weight
Notify BLM prior to spud, running casing, cementing, and BOP testing Sundry to be sent before spud 1500 psi Surface Casing Test Done by Spudder Rig	17-1/2"	<u>Lead (100% OH excess)</u> 1215 sx 12.8 ppg Class C Top of Lead @ 0' <u>Tail (100% OH excess)</u> 340 sx 14.8 ppg Class C Top of Tail @ 1694'	Conductor	122'	8.4 - 8.6 ppg FW
1994' MD	12-1/4"	13.375 54.5 J-55 BTC 0 - 1994	Rustler	1,970'	
Stage 1 Designed to Circulate Cement to Surface DV Tool (Int) 3709 Casing Test to 1500 psi		<u>Stg 1 Lead (50% OH excess)</u> 440 sx 11 ppg Class C - Low Portland Top of Lead @ 0' <u>Stg 1 Tail (50% OH excess)</u> 177 sx 14.8 ppg Class C Top of Tail @ 4396' <u>Stg 2 Lead (50% OH excess)</u> 576 sx 12.8 ppg Class C - Low Portland Top of Lead @ 0' <u>Stg 2 Tail (25% OH excess)</u> 106 sx 14.8 ppg Class C Top of Tail @ 3109' 10.75 45.5 HC L-80 SC BTC 0 - 5146	Salado Tansill Capitan	2,348' 3,196' 3,809'	10 ppg Brine
FIT to 10.5 ppg EMW	8-3/4" Vertical	5146' MD 5146' TVD	Lamar	5,020'	
			Bell Canyon	5,269'	9.0 - 9.5 ppg Cut Brine
			Brushy Canyon	6,690'	
			Bone Spring Lime	7,511'	
12° DLS curve section Surveys: 45° Curve , 90° Lateral LTP VS: 7791' 90° INC, 179.46° AZM BHL VS: 7841' 90° INC, 179.46° AZM	8-3/4" Curve 8-1/2" Lateral	KOP 8649' MD 8643' TVD EOC 9399' MD 9120' TVD	<u>Lead (50% OH excess)</u> 1474 sx 10.6 ppg ProLite Top of Lead @ 0' <u>Tail (20% OH excess)</u> 4141 sx 14.5 ppg Class H - Premium PozMix Top of Tail @ 6960' 5.5 17 USS RYS P-110 Eagle SFH 0 - 16960 5-1/2" marker jts @ ~8500', 11960' MD		9.0 - 9.5 ppg Cut Brine
			16960' MD 9,120' TVD @ BHL 7,841' VS	No Casing Test	



Ameredev Operating

Lea County, NM (N83-NME)

AMEN CORNER ST COM PROJECT

AMEN CORNER 26 36 27 ST COM #264H

OWB

Plan: PWP

Standard Planning Report - Geographic

14 June, 2023



Planning Report - Geographic

Database:	AUS-COMPASS - EDM_15 - 32bit	Local Co-ordinate Reference:	Well AMEN CORNER ST COM 26 36 27 #264H
Company:	Ameredev Operating	TVD Reference:	KB=25' @ 2935.0usft
Project:	Lea County, NM (N83-NME)	MD Reference:	KB=25' @ 2935.0usft
Site:	AMEN CORNER ST COM PROJECT	North Reference:	Grid
Well:	AMEN CORNER ST COM 26 36 27 #264H	Survey Calculation Method:	Minimum Curvature
Wellbore:	OWB		
Design:	PWP		

Project	Lea County, NM (N83-NME)		
Map System:	US State Plane 1983	System Datum:	Mean Sea Level
Geo Datum:	North American Datum 1983		
Map Zone:	New Mexico Eastern Zone		

Site						AMEN CORNER ST COM PROJECT					
Site Position:				Northing:		373,452.33 usft		Latitude:		32.0221652	
From:		Lat/Long		Easting:		873,738.68 usft		Longitude:		-103.2607997	
Position Uncertainty:		0.0 usft		Slot Radius:		13-3/16 "					

Well	AMEN CORNER ST COM 26 36 27 #264H					
Well Position	+N/-S	0.0 usft	Northing:	373,486.70 usft	Latitude:	32.0221475
	+E/-W	0.0 usft	Easting:	877,824.75 usft	Longitude:	-103.2476164
Position Uncertainty		3.0 usft	Wellhead Elevation:	usft	Ground Level:	2,910.0 usft
Grid Convergence:		0.58 °				

Wellbore	OWB
-----------------	-----

Magnetics	Model Name	Sample Date	Declination (°)	Dip Angle (°)	Field Strength (nT)
	IGRF2020	6/14/2023	6.14	59.69	47,201.75925196

Design	PWP
---------------	-----

Audit Notes:				
Version:	Phase:	PROTOTYPE	Tie On Depth:	0.0
Vertical Section:	Depth From (TVD) (usft)	+N-S (usft)	+E-W (usft)	Direction (°)
	0.0	0.0	0.0	179.46

Plan Survey Tool Program	Date	6/14/2023			
Depth From (usft)	Depth To (usft)	Survey (Wellbore)	Tool Name	Remarks	
1	0.0	16,959.8 PWP (OWB)	MWD		
			OWSG MWD - Standard		



Planning Report - Geographic

Database:	AUS-COMPASS - EDM_15 - 32bit	Local Co-ordinate Reference:	Well AMEN CORNER ST COM 26 36 27 #264H
Company:	Ameredev Operating	TVD Reference:	KB=25' @ 2935.0usft
Project:	Lea County, NM (N83-NME)	MD Reference:	KB=25' @ 2935.0usft
Site:	AMEN CORNER ST COM PROJECT	North Reference:	Grid
Well:	AMEN CORNER ST COM 26 36 27 #264H	Survey Calculation Method:	Minimum Curvature
Wellbore:	OWB		
Design:	PWP		

Plan Sections										
Measured Depth (usft)	Inclination (°)	Azimuth (°)	Vertical Depth (usft)	+N/-S (usft)	+E/-W (usft)	Dogleg Rate (°/100usft)	Build Rate (°/100usft)	Turn Rate (°/100usft)	TFO (°)	Target
0.0	0.00	0.00	0.0	0.0	0.0	0.00	0.00	0.00	0.00	
1,000.0	0.00	0.00	1,000.0	0.0	0.0	0.00	0.00	0.00	0.00	
1,250.0	5.00	345.88	1,249.7	10.6	-2.7	2.00	2.00	0.00	345.88	
2,740.2	5.00	345.88	2,734.2	136.5	-34.3	0.00	0.00	0.00	0.00	
2,990.2	0.00	0.00	2,983.9	147.1	-37.0	2.00	-2.00	0.00	180.00	
8,648.8	0.00	0.00	8,642.5	147.1	-37.0	0.00	0.00	0.00	0.00	
9,398.8	90.00	179.46	9,120.0	-330.3	-32.5	12.00	12.00	23.93	179.46	
16,959.8	90.00	179.46	9,120.0	-7,891.0	39.0	0.00	0.00	0.00	0.00	BHL (ACSC #264H)



Planning Report - Geographic

Database:	AUS-COMPASS - EDM_15 - 32bit	Local Co-ordinate Reference:	Well AMEN CORNER ST COM 26 36 27 #264H
Company:	Ameredev Operating	TVD Reference:	KB=25' @ 2935.0usft
Project:	Lea County, NM (N83-NME)	MD Reference:	KB=25' @ 2935.0usft
Site:	AMEN CORNER ST COM PROJECT	North Reference:	Grid
Well:	AMEN CORNER ST COM 26 36 27 #264H	Survey Calculation Method:	Minimum Curvature
Wellbore:	OWB		
Design:	PWP		

Planned Survey

Measured Depth (usft)	Inclination (°)	Azimuth (°)	Vertical Depth (usft)	+N/-S (usft)	+E/-W (usft)	Map Northing (usft)	Map Easting (usft)	Latitude	Longitude
0.0	0.00	0.00	0.0	0.0	0.0	373,486.70	877,824.75	32.0221475	-103.2476164
100.0	0.00	0.00	100.0	0.0	0.0	373,486.70	877,824.75	32.0221475	-103.2476164
200.0	0.00	0.00	200.0	0.0	0.0	373,486.70	877,824.75	32.0221475	-103.2476164
300.0	0.00	0.00	300.0	0.0	0.0	373,486.70	877,824.75	32.0221475	-103.2476164
400.0	0.00	0.00	400.0	0.0	0.0	373,486.70	877,824.75	32.0221475	-103.2476164
500.0	0.00	0.00	500.0	0.0	0.0	373,486.70	877,824.75	32.0221475	-103.2476164
600.0	0.00	0.00	600.0	0.0	0.0	373,486.70	877,824.75	32.0221475	-103.2476164
700.0	0.00	0.00	700.0	0.0	0.0	373,486.70	877,824.75	32.0221475	-103.2476164
800.0	0.00	0.00	800.0	0.0	0.0	373,486.70	877,824.75	32.0221475	-103.2476164
900.0	0.00	0.00	900.0	0.0	0.0	373,486.70	877,824.75	32.0221475	-103.2476164
1,000.0	0.00	0.00	1,000.0	0.0	0.0	373,486.70	877,824.75	32.0221475	-103.2476164
Start Build 2.00									
1,100.0	2.00	345.88	1,100.0	1.7	-0.4	373,488.40	877,824.32	32.0221522	-103.2476177
1,200.0	4.00	345.88	1,199.8	6.8	-1.7	373,493.47	877,823.05	32.0221662	-103.2476217
1,250.0	5.00	345.88	1,249.7	10.6	-2.7	373,497.28	877,822.09	32.0221767	-103.2476246
Start 1490.2 hold at 1250.0 MD									
1,300.0	5.00	345.88	1,299.5	14.8	-3.7	373,501.50	877,821.03	32.0221883	-103.2476279
1,400.0	5.00	345.88	1,399.1	23.3	-5.8	373,509.96	877,818.90	32.0222116	-103.2476345
1,500.0	5.00	345.88	1,498.7	31.7	-8.0	373,518.41	877,816.78	32.0222349	-103.2476411
1,600.0	5.00	345.88	1,598.4	40.2	-10.1	373,526.86	877,814.65	32.0222582	-103.2476477
1,700.0	5.00	345.88	1,698.0	48.6	-12.2	373,535.31	877,812.52	32.0222815	-103.2476543
1,800.0	5.00	345.88	1,797.6	57.1	-14.4	373,543.76	877,810.40	32.0223048	-103.2476608
1,900.0	5.00	345.88	1,897.2	65.5	-16.5	373,552.22	877,808.27	32.0223280	-103.2476674
1,973.1	5.00	345.88	1,970.0	71.7	-18.0	373,558.39	877,806.72	32.0223451	-103.2476722
Rustler									
2,000.0	5.00	345.88	1,996.8	74.0	-18.6	373,560.67	877,806.15	32.0223513	-103.2476740
2,100.0	5.00	345.88	2,096.4	82.4	-20.7	373,569.12	877,804.02	32.0223746	-103.2476806
2,200.0	5.00	345.88	2,196.1	90.9	-22.9	373,577.57	877,801.89	32.0223979	-103.2476872
2,300.0	5.00	345.88	2,295.7	99.3	-25.0	373,586.03	877,799.77	32.0224212	-103.2476938
2,352.5	5.00	345.88	2,348.0	103.8	-26.1	373,590.46	877,798.65	32.0224334	-103.2476972
Salado									
2,400.0	5.00	345.88	2,395.3	107.8	-27.1	373,594.48	877,797.64	32.0224445	-103.2477004
2,500.0	5.00	345.88	2,494.9	116.2	-29.2	373,602.93	877,795.52	32.0224678	-103.2477069
2,600.0	5.00	345.88	2,594.5	124.7	-31.4	373,611.38	877,793.39	32.0224911	-103.2477135
2,700.0	5.00	345.88	2,694.2	133.1	-33.5	373,619.84	877,791.26	32.0225144	-103.2477201
2,740.2	5.00	345.88	2,734.2	136.5	-34.3	373,623.23	877,790.41	32.0225237	-103.2477228
Start Drop -2.00									
2,800.0	3.80	345.88	2,793.8	141.0	-35.5	373,627.68	877,789.29	32.0225360	-103.2477262
2,900.0	1.80	345.88	2,893.7	145.7	-36.7	373,632.43	877,788.10	32.0225491	-103.2477299
2,941.3	0.98	345.88	2,935.0	146.7	-36.9	373,633.40	877,787.85	32.0225517	-103.2477307
Dewey Lake									
2,990.2	0.00	0.00	2,983.9	147.1	-37.0	373,633.80	877,787.75	32.0225529	-103.2477310
Start 5658.6 hold at 2990.2 MD									
3,000.0	0.00	0.00	2,993.7	147.1	-37.0	373,633.80	877,787.75	32.0225529	-103.2477310
3,100.0	0.00	0.00	3,093.7	147.1	-37.0	373,633.80	877,787.75	32.0225529	-103.2477310
3,200.0	0.00	0.00	3,193.7	147.1	-37.0	373,633.80	877,787.75	32.0225529	-103.2477310
3,202.3	0.00	0.00	3,196.0	147.1	-37.0	373,633.80	877,787.75	32.0225529	-103.2477310
Tansill									
3,300.0	0.00	0.00	3,293.7	147.1	-37.0	373,633.80	877,787.75	32.0225529	-103.2477310
3,400.0	0.00	0.00	3,393.7	147.1	-37.0	373,633.80	877,787.75	32.0225529	-103.2477310
3,500.0	0.00	0.00	3,493.7	147.1	-37.0	373,633.80	877,787.75	32.0225529	-103.2477310
3,600.0	0.00	0.00	3,593.7	147.1	-37.0	373,633.80	877,787.75	32.0225529	-103.2477310
3,700.0	0.00	0.00	3,693.7	147.1	-37.0	373,633.80	877,787.75	32.0225529	-103.2477310



Planning Report - Geographic

Database:	AUS-COMPASS - EDM_15 - 32bit	Local Co-ordinate Reference:	Well AMEN CORNER ST COM 26 36 27 #264H
Company:	Ameredev Operating	TVD Reference:	KB=25' @ 2935.0usft
Project:	Lea County, NM (N83-NME)	MD Reference:	KB=25' @ 2935.0usft
Site:	AMEN CORNER ST COM PROJECT	North Reference:	Grid
Well:	AMEN CORNER ST COM 26 36 27 #264H	Survey Calculation Method:	Minimum Curvature
Wellbore:	OWB		
Design:	PWP		

Planned Survey

Measured Depth (usft)	Inclination (°)	Azimuth (°)	Vertical Depth (usft)	+N/-S (usft)	+E/-W (usft)	Map Northing (usft)	Map Easting (usft)	Latitude	Longitude
3,800.0	0.00	0.00	3,793.7	147.1	-37.0	373,633.80	877,787.75	32.0225529	-103.2477310
3,815.3	0.00	0.00	3,809.0	147.1	-37.0	373,633.80	877,787.75	32.0225529	-103.2477310
Capitan									
3,900.0	0.00	0.00	3,893.7	147.1	-37.0	373,633.80	877,787.75	32.0225529	-103.2477310
4,000.0	0.00	0.00	3,993.7	147.1	-37.0	373,633.80	877,787.75	32.0225529	-103.2477310
4,100.0	0.00	0.00	4,093.7	147.1	-37.0	373,633.80	877,787.75	32.0225529	-103.2477310
4,200.0	0.00	0.00	4,193.7	147.1	-37.0	373,633.80	877,787.75	32.0225529	-103.2477310
4,300.0	0.00	0.00	4,293.7	147.1	-37.0	373,633.80	877,787.75	32.0225529	-103.2477310
4,400.0	0.00	0.00	4,393.7	147.1	-37.0	373,633.80	877,787.75	32.0225529	-103.2477310
4,500.0	0.00	0.00	4,493.7	147.1	-37.0	373,633.80	877,787.75	32.0225529	-103.2477310
4,600.0	0.00	0.00	4,593.7	147.1	-37.0	373,633.80	877,787.75	32.0225529	-103.2477310
4,700.0	0.00	0.00	4,693.7	147.1	-37.0	373,633.80	877,787.75	32.0225529	-103.2477310
4,800.0	0.00	0.00	4,793.7	147.1	-37.0	373,633.80	877,787.75	32.0225529	-103.2477310
4,900.0	0.00	0.00	4,893.7	147.1	-37.0	373,633.80	877,787.75	32.0225529	-103.2477310
5,000.0	0.00	0.00	4,993.7	147.1	-37.0	373,633.80	877,787.75	32.0225529	-103.2477310
5,026.3	0.00	0.00	5,020.0	147.1	-37.0	373,633.80	877,787.75	32.0225529	-103.2477310
Lamar									
5,100.0	0.00	0.00	5,093.7	147.1	-37.0	373,633.80	877,787.75	32.0225529	-103.2477310
5,200.0	0.00	0.00	5,193.7	147.1	-37.0	373,633.80	877,787.75	32.0225529	-103.2477310
5,275.3	0.00	0.00	5,269.0	147.1	-37.0	373,633.80	877,787.75	32.0225529	-103.2477310
Bell Canyon									
5,300.0	0.00	0.00	5,293.7	147.1	-37.0	373,633.80	877,787.75	32.0225529	-103.2477310
5,400.0	0.00	0.00	5,393.7	147.1	-37.0	373,633.80	877,787.75	32.0225529	-103.2477310
5,500.0	0.00	0.00	5,493.7	147.1	-37.0	373,633.80	877,787.75	32.0225529	-103.2477310
5,600.0	0.00	0.00	5,593.7	147.1	-37.0	373,633.80	877,787.75	32.0225529	-103.2477310
5,700.0	0.00	0.00	5,693.7	147.1	-37.0	373,633.80	877,787.75	32.0225529	-103.2477310
5,800.0	0.00	0.00	5,793.7	147.1	-37.0	373,633.80	877,787.75	32.0225529	-103.2477310
5,900.0	0.00	0.00	5,893.7	147.1	-37.0	373,633.80	877,787.75	32.0225529	-103.2477310
6,000.0	0.00	0.00	5,993.7	147.1	-37.0	373,633.80	877,787.75	32.0225529	-103.2477310
6,100.0	0.00	0.00	6,093.7	147.1	-37.0	373,633.80	877,787.75	32.0225529	-103.2477310
6,200.0	0.00	0.00	6,193.7	147.1	-37.0	373,633.80	877,787.75	32.0225529	-103.2477310
6,300.0	0.00	0.00	6,293.7	147.1	-37.0	373,633.80	877,787.75	32.0225529	-103.2477310
6,400.0	0.00	0.00	6,393.7	147.1	-37.0	373,633.80	877,787.75	32.0225529	-103.2477310
6,500.0	0.00	0.00	6,493.7	147.1	-37.0	373,633.80	877,787.75	32.0225529	-103.2477310
6,600.0	0.00	0.00	6,593.7	147.1	-37.0	373,633.80	877,787.75	32.0225529	-103.2477310
6,696.3	0.00	0.00	6,690.0	147.1	-37.0	373,633.80	877,787.75	32.0225529	-103.2477310
Brushy Canyon									
6,700.0	0.00	0.00	6,693.7	147.1	-37.0	373,633.80	877,787.75	32.0225529	-103.2477310
6,800.0	0.00	0.00	6,793.7	147.1	-37.0	373,633.80	877,787.75	32.0225529	-103.2477310
6,900.0	0.00	0.00	6,893.7	147.1	-37.0	373,633.80	877,787.75	32.0225529	-103.2477310
7,000.0	0.00	0.00	6,993.7	147.1	-37.0	373,633.80	877,787.75	32.0225529	-103.2477310
7,100.0	0.00	0.00	7,093.7	147.1	-37.0	373,633.80	877,787.75	32.0225529	-103.2477310
7,200.0	0.00	0.00	7,193.7	147.1	-37.0	373,633.80	877,787.75	32.0225529	-103.2477310
7,300.0	0.00	0.00	7,293.7	147.1	-37.0	373,633.80	877,787.75	32.0225529	-103.2477310
7,400.0	0.00	0.00	7,393.7	147.1	-37.0	373,633.80	877,787.75	32.0225529	-103.2477310
7,500.0	0.00	0.00	7,493.7	147.1	-37.0	373,633.80	877,787.75	32.0225529	-103.2477310
7,517.3	0.00	0.00	7,511.0	147.1	-37.0	373,633.80	877,787.75	32.0225529	-103.2477310
Bone Spring Lime									
7,600.0	0.00	0.00	7,593.7	147.1	-37.0	373,633.80	877,787.75	32.0225529	-103.2477310
7,700.0	0.00	0.00	7,693.7	147.1	-37.0	373,633.80	877,787.75	32.0225529	-103.2477310
7,800.0	0.00	0.00	7,793.7	147.1	-37.0	373,633.80	877,787.75	32.0225529	-103.2477310
7,900.0	0.00	0.00	7,893.7	147.1	-37.0	373,633.80	877,787.75	32.0225529	-103.2477310
8,000.0	0.00	0.00	7,993.7	147.1	-37.0	373,633.80	877,787.75	32.0225529	-103.2477310



Planning Report - Geographic

Database:	AUS-COMPASS - EDM_15 - 32bit	Local Co-ordinate Reference:	Well AMEN CORNER ST COM 26 36 27 #264H
Company:	Ameredev Operating	TVD Reference:	KB=25' @ 2935.0usft
Project:	Lea County, NM (N83-NME)	MD Reference:	KB=25' @ 2935.0usft
Site:	AMEN CORNER ST COM PROJECT	North Reference:	Grid
Well:	AMEN CORNER ST COM 26 36 27 #264H	Survey Calculation Method:	Minimum Curvature
Wellbore:	OWB		
Design:	PWP		

Planned Survey									
Measured Depth (usft)	Inclination (°)	Azimuth (°)	Vertical Depth (usft)	+N/-S (usft)	+E/-W (usft)	Map Northing (usft)	Map Easting (usft)	Latitude	Longitude
8,100.0	0.00	0.00	8,093.7	147.1	-37.0	373,633.80	877,787.75	32.0225529	-103.2477310
8,200.0	0.00	0.00	8,193.7	147.1	-37.0	373,633.80	877,787.75	32.0225529	-103.2477310
8,300.0	0.00	0.00	8,293.7	147.1	-37.0	373,633.80	877,787.75	32.0225529	-103.2477310
8,400.0	0.00	0.00	8,393.7	147.1	-37.0	373,633.80	877,787.75	32.0225529	-103.2477310
8,500.0	0.00	0.00	8,493.7	147.1	-37.0	373,633.80	877,787.75	32.0225529	-103.2477310
8,600.0	0.00	0.00	8,593.7	147.1	-37.0	373,633.80	877,787.75	32.0225529	-103.2477310
8,648.8	0.00	0.00	8,642.5	147.1	-37.0	373,633.80	877,787.75	32.0225529	-103.2477310
KOP-Start DLS 12.00 TFO 179.46									
8,650.0	0.14	179.46	8,643.7	147.1	-37.0	373,633.80	877,787.75	32.0225528	-103.2477310
8,675.0	3.14	179.46	8,668.7	146.4	-37.0	373,633.09	877,787.76	32.0225509	-103.2477310
8,700.0	6.14	179.46	8,693.6	144.4	-37.0	373,631.06	877,787.78	32.0225453	-103.2477310
8,725.0	9.14	179.46	8,718.4	141.0	-36.9	373,627.74	877,787.81	32.0225362	-103.2477310
8,750.0	12.14	179.46	8,742.9	136.4	-36.9	373,623.12	877,787.85	32.0225235	-103.2477310
8,775.0	15.14	179.46	8,767.2	130.5	-36.8	373,617.23	877,787.91	32.0225073	-103.2477310
8,800.0	18.14	179.46	8,791.2	123.4	-36.8	373,610.07	877,787.97	32.0224876	-103.2477310
8,825.0	21.14	179.46	8,814.7	115.0	-36.7	373,601.66	877,788.05	32.0224645	-103.2477311
8,850.0	24.14	179.46	8,837.8	105.3	-36.6	373,592.04	877,788.14	32.0224381	-103.2477311
8,875.0	27.14	179.46	8,860.3	94.5	-36.5	373,581.22	877,788.25	32.0224083	-103.2477311
8,900.0	30.14	179.46	8,882.3	82.5	-36.4	373,569.24	877,788.36	32.0223754	-103.2477311
8,925.0	33.14	179.46	8,903.5	69.4	-36.3	373,556.13	877,788.48	32.0223393	-103.2477311
8,950.0	36.14	179.46	8,924.1	55.2	-36.1	373,541.92	877,788.62	32.0223003	-103.2477312
8,975.0	39.14	179.46	8,943.9	39.9	-36.0	373,526.65	877,788.76	32.0222583	-103.2477312
9,000.0	42.14	179.46	8,962.9	23.7	-35.8	373,510.37	877,788.92	32.0222136	-103.2477312
9,025.0	45.14	179.46	8,981.0	6.4	-35.7	373,493.12	877,789.08	32.0221661	-103.2477313
9,050.0	48.14	179.46	8,998.1	-11.8	-35.5	373,474.94	877,789.25	32.0221162	-103.2477313
9,075.0	51.14	179.46	9,014.3	-30.8	-35.3	373,455.90	877,789.43	32.0220638	-103.2477313
9,100.0	54.14	179.46	9,029.5	-50.7	-35.1	373,436.03	877,789.62	32.0220092	-103.2477314
9,125.0	57.14	179.46	9,043.6	-71.3	-34.9	373,415.39	877,789.81	32.0219525	-103.2477314
9,150.0	60.14	179.46	9,056.6	-92.7	-34.7	373,394.05	877,790.02	32.0218938	-103.2477315
9,175.0	63.14	179.46	9,068.5	-114.7	-34.5	373,372.05	877,790.22	32.0218334	-103.2477315
9,200.0	66.14	179.46	9,079.2	-137.2	-34.3	373,349.46	877,790.44	32.0217713	-103.2477315
9,225.0	69.14	179.46	9,088.7	-160.4	-34.1	373,326.35	877,790.66	32.0217077	-103.2477316
9,250.0	72.14	179.46	9,097.0	-183.9	-33.9	373,302.76	877,790.88	32.0216429	-103.2477316
9,275.0	75.14	179.46	9,104.0	-207.9	-33.6	373,278.78	877,791.10	32.0215770	-103.2477317
9,300.0	78.14	179.46	9,109.8	-232.2	-33.4	373,254.46	877,791.33	32.0215101	-103.2477317
9,325.0	81.14	179.46	9,114.3	-256.8	-33.2	373,229.87	877,791.57	32.0214425	-103.2477318
9,350.0	84.14	179.46	9,117.5	-281.6	-32.9	373,205.08	877,791.80	32.0213744	-103.2477318
9,375.0	87.14	179.46	9,119.4	-306.5	-32.7	373,180.16	877,792.04	32.0213059	-103.2477319
9,398.8	90.00	179.46	9,120.0	-330.3	-32.5	373,156.36	877,792.26	32.0212405	-103.2477319
LP-Start 7561.0 hold at 9398.8 MD									
9,400.0	90.00	179.46	9,120.0	-331.5	-32.5	373,155.17	877,792.27	32.0212372	-103.2477319
9,500.0	90.00	179.46	9,120.0	-431.5	-31.5	373,055.17	877,793.22	32.0209623	-103.2477321
9,600.0	90.00	179.46	9,120.0	-531.5	-30.6	372,955.18	877,794.16	32.0206875	-103.2477323
9,700.0	90.00	179.46	9,120.0	-631.5	-29.6	372,855.18	877,795.11	32.0204126	-103.2477325
9,800.0	90.00	179.46	9,120.0	-731.5	-28.7	372,755.18	877,796.05	32.0201377	-103.2477327
9,900.0	90.00	179.46	9,120.0	-831.5	-27.8	372,655.19	877,797.00	32.0198629	-103.2477329
10,000.0	90.00	179.46	9,120.0	-931.5	-26.8	372,555.19	877,797.94	32.0195880	-103.2477331
10,100.0	90.00	179.46	9,120.0	-1,031.5	-25.9	372,455.20	877,798.89	32.0193131	-103.2477333
10,200.0	90.00	179.46	9,120.0	-1,131.5	-24.9	372,355.20	877,799.83	32.0190383	-103.2477335
10,300.0	90.00	179.46	9,120.0	-1,231.5	-24.0	372,255.21	877,800.78	32.0187634	-103.2477336
10,400.0	90.00	179.46	9,120.0	-1,331.5	-23.0	372,155.21	877,801.72	32.0184886	-103.2477338
10,500.0	90.00	179.46	9,120.0	-1,431.5	-22.1	372,055.22	877,802.67	32.0182137	-103.2477340
10,600.0	90.00	179.46	9,120.0	-1,531.5	-21.1	371,955.22	877,803.61	32.0179388	-103.2477342



Planning Report - Geographic

Database:	AUS-COMPASS - EDM_15 - 32bit	Local Co-ordinate Reference:	Well AMEN CORNER ST COM 26 36 27 #264H
Company:	Ameredev Operating	TVD Reference:	KB=25' @ 2935.0usft
Project:	Lea County, NM (N83-NME)	MD Reference:	KB=25' @ 2935.0usft
Site:	AMEN CORNER ST COM PROJECT	North Reference:	Grid
Well:	AMEN CORNER ST COM 26 36 27 #264H	Survey Calculation Method:	Minimum Curvature
Wellbore:	OWB		
Design:	PWP		

Planned Survey									
Measured Depth (usft)	Inclination (°)	Azimuth (°)	Vertical Depth (usft)	+N/-S (usft)	+E/-W (usft)	Map Northing (usft)	Map Easting (usft)	Latitude	Longitude
10,700.0	90.00	179.46	9,120.0	-1,631.5	-20.2	371,855.22	877,804.56	32.0176640	-103.2477344
10,800.0	90.00	179.46	9,120.0	-1,731.5	-19.2	371,755.23	877,805.50	32.0173891	-103.2477346
10,900.0	90.00	179.46	9,120.0	-1,831.5	-18.3	371,655.23	877,806.45	32.0171142	-103.2477348
11,000.0	90.00	179.46	9,120.0	-1,931.5	-17.4	371,555.24	877,807.39	32.0168394	-103.2477350
11,100.0	90.00	179.46	9,120.0	-2,031.5	-16.4	371,455.24	877,808.34	32.0165645	-103.2477352
11,200.0	90.00	179.46	9,120.0	-2,131.5	-15.5	371,355.25	877,809.28	32.0162896	-103.2477354
11,300.0	90.00	179.46	9,120.0	-2,231.5	-14.5	371,255.25	877,810.23	32.0160148	-103.2477356
11,400.0	90.00	179.46	9,120.0	-2,331.4	-13.6	371,155.26	877,811.17	32.0157399	-103.2477358
11,500.0	90.00	179.46	9,120.0	-2,431.4	-12.6	371,055.26	877,812.12	32.0154650	-103.2477360
11,600.0	90.00	179.46	9,120.0	-2,531.4	-11.7	370,955.26	877,813.06	32.0151902	-103.2477361
11,700.0	90.00	179.46	9,120.0	-2,631.4	-10.7	370,855.27	877,814.01	32.0149153	-103.2477363
11,800.0	90.00	179.46	9,120.0	-2,731.4	-9.8	370,755.27	877,814.95	32.0146405	-103.2477365
11,900.0	90.00	179.46	9,120.0	-2,831.4	-8.9	370,655.28	877,815.90	32.0143656	-103.2477367
12,000.0	90.00	179.46	9,120.0	-2,931.4	-7.9	370,555.28	877,816.84	32.0140907	-103.2477369
12,100.0	90.00	179.46	9,120.0	-3,031.4	-7.0	370,455.29	877,817.79	32.0138159	-103.2477371
12,200.0	90.00	179.46	9,120.0	-3,131.4	-6.0	370,355.29	877,818.73	32.0135410	-103.2477373
12,300.0	90.00	179.46	9,120.0	-3,231.4	-5.1	370,255.30	877,819.68	32.0132661	-103.2477375
12,400.0	90.00	179.46	9,120.0	-3,331.4	-4.1	370,155.30	877,820.62	32.0129913	-103.2477377
12,500.0	90.00	179.46	9,120.0	-3,431.4	-3.2	370,055.30	877,821.57	32.0127164	-103.2477379
12,600.0	90.00	179.46	9,120.0	-3,531.4	-2.2	369,955.31	877,822.51	32.0124415	-103.2477381
12,700.0	90.00	179.46	9,120.0	-3,631.4	-1.3	369,855.31	877,823.46	32.0121667	-103.2477383
12,800.0	90.00	179.46	9,120.0	-3,731.4	-0.3	369,755.32	877,824.40	32.0118918	-103.2477384
12,900.0	90.00	179.46	9,120.0	-3,831.4	0.6	369,655.32	877,825.35	32.0116169	-103.2477386
13,000.0	90.00	179.46	9,120.0	-3,931.4	1.5	369,555.33	877,826.29	32.0113421	-103.2477388
13,100.0	90.00	179.46	9,120.0	-4,031.4	2.5	369,455.33	877,827.24	32.0110672	-103.2477390
13,200.0	90.00	179.46	9,120.0	-4,131.4	3.4	369,355.34	877,828.18	32.0107924	-103.2477392
13,300.0	90.00	179.46	9,120.0	-4,231.4	4.4	369,255.34	877,829.13	32.0105175	-103.2477394
13,400.0	90.00	179.46	9,120.0	-4,331.4	5.3	369,155.34	877,830.08	32.0102426	-103.2477396
13,500.0	90.00	179.46	9,120.0	-4,431.4	6.3	369,055.35	877,831.02	32.0099678	-103.2477398
13,600.0	90.00	179.46	9,120.0	-4,531.4	7.2	368,955.35	877,831.97	32.0096929	-103.2477400
13,700.0	90.00	179.46	9,120.0	-4,631.3	8.2	368,855.36	877,832.91	32.0094180	-103.2477402
13,800.0	90.00	179.46	9,120.0	-4,731.3	9.1	368,755.36	877,833.86	32.0091432	-103.2477404
13,900.0	90.00	179.46	9,120.0	-4,831.3	10.1	368,655.37	877,834.80	32.0088683	-103.2477406
14,000.0	90.00	179.46	9,120.0	-4,931.3	11.0	368,555.37	877,835.75	32.0085934	-103.2477407
14,100.0	90.00	179.46	9,120.0	-5,031.3	11.9	368,455.38	877,836.69	32.0083186	-103.2477409
14,200.0	90.00	179.46	9,120.0	-5,131.3	12.9	368,355.38	877,837.64	32.0080437	-103.2477411
14,300.0	90.00	179.46	9,120.0	-5,231.3	13.8	368,255.39	877,838.58	32.0077688	-103.2477413
14,400.0	90.00	179.46	9,120.0	-5,331.3	14.8	368,155.39	877,839.53	32.0074940	-103.2477415
14,500.0	90.00	179.46	9,120.0	-5,431.3	15.7	368,055.39	877,840.47	32.0072191	-103.2477417
14,600.0	90.00	179.46	9,120.0	-5,531.3	16.7	367,955.40	877,841.42	32.0069443	-103.2477419
14,700.0	90.00	179.46	9,120.0	-5,631.3	17.6	367,855.40	877,842.36	32.0066694	-103.2477421
14,800.0	90.00	179.46	9,120.0	-5,731.3	18.6	367,755.41	877,843.31	32.0063945	-103.2477423
14,900.0	90.00	179.46	9,120.0	-5,831.3	19.5	367,655.41	877,844.25	32.0061197	-103.2477425
15,000.0	90.00	179.46	9,120.0	-5,931.3	20.4	367,555.42	877,845.20	32.0058448	-103.2477427
15,100.0	90.00	179.46	9,120.0	-6,031.3	21.4	367,455.42	877,846.14	32.0055699	-103.2477428
15,200.0	90.00	179.46	9,120.0	-6,131.3	22.3	367,355.43	877,847.09	32.0052951	-103.2477430
15,300.0	90.00	179.46	9,120.0	-6,231.3	23.3	367,255.43	877,848.03	32.0050202	-103.2477432
15,400.0	90.00	179.46	9,120.0	-6,331.3	24.2	367,155.43	877,848.98	32.0047453	-103.2477434
15,500.0	90.00	179.46	9,120.0	-6,431.3	25.2	367,055.44	877,849.92	32.0044705	-103.2477436
15,600.0	90.00	179.46	9,120.0	-6,531.3	26.1	366,955.44	877,850.87	32.0041956	-103.2477438
15,700.0	90.00	179.46	9,120.0	-6,631.3	27.1	366,855.45	877,851.81	32.0039207	-103.2477440
15,800.0	90.00	179.46	9,120.0	-6,731.3	28.0	366,755.45	877,852.76	32.0036459	-103.2477442
15,900.0	90.00	179.46	9,120.0	-6,831.2	29.0	366,655.46	877,853.70	32.0033710	-103.2477444
16,000.0	90.00	179.46	9,120.0	-6,931.2	29.9	366,555.46	877,854.65	32.0030962	-103.2477446



Planning Report - Geographic

Database:	AUS-COMPASS - EDM_15 - 32bit	Local Co-ordinate Reference:	Well AMEN CORNER ST COM 26 36 27 #264H
Company:	Ameredev Operating	TVD Reference:	KB=25' @ 2935.0usft
Project:	Lea County, NM (N83-NME)	MD Reference:	KB=25' @ 2935.0usft
Site:	AMEN CORNER ST COM PROJECT	North Reference:	Grid
Well:	AMEN CORNER ST COM 26 36 27 #264H	Survey Calculation Method:	Minimum Curvature
Wellbore:	OWB		
Design:	PWP		

Planned Survey

Measured Depth (usft)	Inclination (°)	Azimuth (°)	Vertical Depth (usft)	+N/-S (usft)	+E/-W (usft)	Map Northing (usft)	Map Easting (usft)	Latitude	Longitude
16,100.0	90.00	179.46	9,120.0	-7,031.2	30.8	366,455.47	877,855.59	32.0028213	-103.2477448
16,200.0	90.00	179.46	9,120.0	-7,131.2	31.8	366,355.47	877,856.54	32.0025464	-103.2477449
16,300.0	90.00	179.46	9,120.0	-7,231.2	32.7	366,255.47	877,857.48	32.0022716	-103.2477451
16,400.0	90.00	179.46	9,120.0	-7,331.2	33.7	366,155.48	877,858.43	32.0019967	-103.2477453
16,500.0	90.00	179.46	9,120.0	-7,431.2	34.6	366,055.48	877,859.37	32.0017218	-103.2477455
16,600.0	90.00	179.46	9,120.0	-7,531.2	35.6	365,955.49	877,860.32	32.0014470	-103.2477457
16,700.0	90.00	179.46	9,120.0	-7,631.2	36.5	365,855.49	877,861.26	32.0011721	-103.2477459
16,800.0	90.00	179.46	9,120.0	-7,731.2	37.5	365,755.50	877,862.21	32.0008972	-103.2477461
16,900.0	90.00	179.46	9,120.0	-7,831.2	38.4	365,655.50	877,863.15	32.0006224	-103.2477463
16,959.8	90.00	179.46	9,120.0	-7,891.0	39.0	365,595.68	877,863.72	32.0004579	-103.2477464

TD at 16959.8

Design Targets

Target Name	- hit/miss target	Dip Angle (°)	Dip Dir. (°)	TVD (usft)	+N/-S (usft)	+E/-W (usft)	Northing (usft)	Easting (usft)	Latitude	Longitude
LTP (ACSC #264H)	- plan misses target center by 9.8usft at 16900.0usft MD (9120.0 TVD, -7831.2 N, 38.4 E)	0.00	0.00	9,120.0	-7,841.0	38.5	365,645.66	877,863.25	32.0005953	-103.2477463
BHL (ACSC #264H)	- plan hits target center	0.00	0.00	9,120.0	-7,891.0	39.0	365,595.68	877,863.72	32.0004579	-103.2477464
FTP (ACSC #264H)	- plan misses target center by 0.2usft at 9398.7usft MD (9120.0 TVD, -330.3 N, -32.5 E)	0.00	0.00	9,120.0	-330.2	-32.3	373,156.46	877,792.48	32.0212407	-103.2477312

Formations

Measured Depth (usft)	Vertical Depth (usft)	Name	Lithology	Dip (°)	Dip Direction (°)
1,973.1	1,970.0	Rustler			
2,352.5	2,348.0	Salado			
2,941.3	2,935.0	Dewey Lake			
3,202.3	3,196.0	Tansill			
3,815.3	3,809.0	Capitan			
5,026.3	5,020.0	Lamar			
5,275.3	5,269.0	Bell Canyon			
6,696.3	6,690.0	Brushy Canyon			
7,517.3	7,511.0	Bone Spring Lime			



Planning Report - Geographic

Database:	AUS-COMPASS - EDM_15 - 32bit	Local Co-ordinate Reference:	Well AMEN CORNER ST COM 26 36 27 #264H
Company:	Ameredev Operating	TVD Reference:	KB=25' @ 2935.0usft
Project:	Lea County, NM (N83-NME)	MD Reference:	KB=25' @ 2935.0usft
Site:	AMEN CORNER ST COM PROJECT	North Reference:	Grid
Well:	AMEN CORNER ST COM 26 36 27 #264H	Survey Calculation Method:	Minimum Curvature
Wellbore:	OWB		
Design:	PWP		

Plan Annotations				
Measured Depth (usft)	Vertical Depth (usft)	Local Coordinates		Comment
		+N/-S (usft)	+E/-W (usft)	
1,000.0	1,000.0	0.0	0.0	Start Build 2.00
1,250.0	1,249.7	10.6	-2.7	Start 1490.2 hold at 1250.0 MD
2,740.2	2,734.2	136.5	-34.3	Start Drop -2.00
2,990.2	2,983.9	147.1	-37.0	Start 5658.6 hold at 2990.2 MD
8,648.8	8,642.5	147.1	-37.0	KOP-Start DLS 12.00 TFO 179.46
9,398.8	9,120.0	-330.3	-32.5	LP-Start 7561.0 hold at 9398.8 MD
16,959.8	9,120.0	-7,891.0	39.0	TD at 16959.8

State of New Mexico
Energy, Minerals and Natural Resources Department

Submit Electronically
Via E-permitting

Oil Conservation Division
1220 South St. Francis Dr.
Santa Fe, NM 87505

NATURAL GAS MANAGEMENT PLAN

This Natural Gas Management Plan must be submitted with each Application for Permit to Drill (APD) for a new or recompleted well.

Section 1 – Plan Description

Effective May 25, 2021

I. Operator: _____ Ameredev II, LLC _____ **OGRID:** _____ 372224 _____ **Date:** _____ 06/21/2023 _____

II. Type: ☒ Original ☐ Amendment due to ☐ 19.15.27.9.D(6)(a) NMAC ☐ 19.15.27.9.D(6)(b) NMAC ☐ Other.

If Other, please describe: _____

III. Well(s): Provide the following information for each new or recompleted well or set of wells proposed to be drilled or proposed to be recompleted from a single well pad or connected to a central delivery point.

Well Name	API	ULSTR	Footages	Anticipated Oil BBL/D	Anticipated Gas MCF/D	Anticipated Produced Water BBL/D
Amen Corner 26 36 27 State Com 181H	30025-		230' FSL & 1120' FWL	680	3,412	2,610
Amen Corner 26 36 27 State Com 184H	30025-		200' FNL & 230' FEL	680	3,412	2,610
Amen Corner 26 36 27 State Com 261H	30025-		230' FSL & 290' FWL	680	3,412	2,610
Amen Corner 26 36 27 State Com 264H	30025-		230' FSL & 955' FEL	680	3,412	2,610

IV. Central Delivery Point Name: _____ [See 19.15.27.9(D)(1) NMAC]

V. Anticipated Schedule: Provide the following information for each new or recompleted well or set of wells proposed to be drilled or proposed to be recompleted from a single well pad or connected to a central delivery point.

Well Name	API	Spud Date	TD Reached Date	Completion Commencement Date	Initial Flow Back Date	First Production Date
Amen Corner 26 36 27 State Com 181H	30025-	11/01/2024	12/15/2024	01/15/2025	02/01/2025	02/04/2025
Amen Corner 26 36 27 State Com 184H	30025-	11/01/2024	12/15/2024	01/15/2025	02/01/2025	02/04/2025
Amen Corner 26 36 27 State Com 261H	30025-	11/01/2024	12/15/2024	01/15/2025	02/01/2025	02/04/2025
Amen Corner 26 36 27 State Com 264H	30025-	11/01/2024	12/15/2024	01/15/2025	02/01/2025	02/04/2025

VI. Separation Equipment: ☒ Attach a complete description of how Operator will size separation equipment to optimize gas capture.

VII. Operational Practices: ☒ Attach a complete description of the actions Operator will take to comply with the requirements of Subsection A through F of 19.15.27.8 NMAC.

VIII. Best Management Practices: ☒ Attach a complete description of Operator's best management practices to minimize venting during active and planned maintenance.

Section 2 – Enhanced Plan**EFFECTIVE APRIL 1, 2022**

Beginning April 1, 2022, an operator that is not in compliance with its statewide natural gas capture requirement for the applicable reporting area must complete this section.

☒ Operator certifies that it is not required to complete this section because Operator is in compliance with its statewide natural gas capture requirement for the applicable reporting area.

IX. Anticipated Natural Gas Production:

Well	API	Anticipated Average Natural Gas Rate MCF/D	Anticipated Volume of Natural Gas for the First Year MCF

X. Natural Gas Gathering System (NGGS):

Operator	System	ULSTR of Tie-in	Anticipated Gathering Start Date	Available Maximum Daily Capacity of System Segment Tie-in

XI. Map. ☐ Attach an accurate and legible map depicting the location of the well(s), the anticipated pipeline route(s) connecting the production operations to the existing or planned interconnect of the natural gas gathering system(s), and the maximum daily capacity of the segment or portion of the natural gas gathering system(s) to which the well(s) will be connected.

XII. Line Capacity. The natural gas gathering system ☐ will ☐ will not have capacity to gather 100% of the anticipated natural gas production volume from the well prior to the date of first production.

XIII. Line Pressure. Operator ☐ does ☐ does not anticipate that its existing well(s) connected to the same segment, or portion, of the natural gas gathering system(s) described above will continue to meet anticipated increases in line pressure caused by the new well(s).

☐ Attach Operator's plan to manage production in response to the increased line pressure.

XIV. Confidentiality: ☐ Operator asserts confidentiality pursuant to Section 71-2-8 NMSA 1978 for the information provided in Section 2 as provided in Paragraph (2) of Subsection D of 19.15.27.9 NMAC, and attaches a full description of the specific information for which confidentiality is asserted and the basis for such assertion.

Section 3 - Certifications

Effective May 25, 2021

Operator certifies that, after reasonable inquiry and based on the available information at the time of submittal:

☒ Operator will be able to connect the well(s) to a natural gas gathering system in the general area with sufficient capacity to transport one hundred percent of the anticipated volume of natural gas produced from the well(s) commencing on the date of first production, taking into account the current and anticipated volumes of produced natural gas from other wells connected to the pipeline gathering system; or

☐ Operator will not be able to connect to a natural gas gathering system in the general area with sufficient capacity to transport one hundred percent of the anticipated volume of natural gas produced from the well(s) commencing on the date of first production, taking into account the current and anticipated volumes of produced natural gas from other wells connected to the pipeline gathering system.

If Operator checks this box, Operator will select one of the following:

Well Shut-In. ☐ Operator will shut-in and not produce the well until it submits the certification required by Paragraph (4) of Subsection D of 19.15.27.9 NMAC; or

Venting and Flaring Plan. ☐ Operator has attached a venting and flaring plan that evaluates and selects one or more of the potential alternative beneficial uses for the natural gas until a natural gas gathering system is available, including:

- (a) power generation on lease;
- (b) power generation for grid;
- (c) compression on lease;
- (d) liquids removal on lease;
- (e) reinjection for underground storage;
- (f) reinjection for temporary storage;
- (g) reinjection for enhanced oil recovery;
- (h) fuel cell production; and
- (i) other alternative beneficial uses approved by the division.

Section 4 - Notices

1. If, at any time after Operator submits this Natural Gas Management Plan and before the well is spud:

(a) Operator becomes aware that the natural gas gathering system it planned to connect the well(s) to has become unavailable or will not have capacity to transport one hundred percent of the production from the well(s), no later than 20 days after becoming aware of such information, Operator shall submit for OCD's approval a new or revised venting and flaring plan containing the information specified in Paragraph (5) of Subsection D of 19.15.27.9 NMAC; or

(b) Operator becomes aware that it has, cumulatively for the year, become out of compliance with its baseline natural gas capture rate or natural gas capture requirement, no later than 20 days after becoming aware of such information, Operator shall submit for OCD's approval a new or revised Natural Gas Management Plan for each well it plans to spud during the next 90 days containing the information specified in Paragraph (2) of Subsection D of 19.15.27.9 NMAC, and shall file an update for each Natural Gas Management Plan until Operator is back in compliance with its baseline natural gas capture rate or natural gas capture requirement.

2. OCD may deny or conditionally approve an APD if Operator does not make a certification, fails to submit an adequate venting and flaring plan which includes alternative beneficial uses for the anticipated volume of natural gas produced, or if OCD determines that Operator will not have adequate natural gas takeaway capacity at the time a well will be spud.

I certify that, after reasonable inquiry, the statements in and attached to this Natural Gas Management Plan are true and correct to the best of my knowledge and acknowledge that a false statement may be subject to civil and criminal penalties under the Oil and Gas Act.

Signature: <i>Cesca Yu</i>
Printed Name: Cesca Yu
Title: Engineer
E-mail Address: cyu@amerev.com
Date: 06/21/2023
Phone: 512-775-1417

OIL CONSERVATION DIVISION
(Only applicable when submitted as a standalone form)

Approved By:
Title:
Approval Date:
Conditions of Approval:

Natural Gas Management Plan

VI. Separation Equipment: Attach a complete description of how Operator will size separation equipment to optimize gas capture.

- Separation equipment is sized to allow for retention time and velocity to adequately separate oil, gas, and water at anticipated peak rates.
- All central tank battery equipment is designed to efficiently capture the remaining gas from the liquid phase.
- Valves and meters are designed to service without flow interruption or venting of gas.

VII. Operational Practices: Attach a complete description of the actions Operator will take to comply with the requirements of Subsection A through F 19.15.27.8 NMAC.

19.15.27.8 (A)

Ameredev's field operations are designed with the goal of minimizing flaring and preventing venting of natural gas. If capturing the gas is not possible then the gas is combusted/flared using properly sized flares or combustors in accordance with state air permit rules.

19.15.27.8 (B) Venting and Flaring during drilling operations

- A properly-sized flare stack will be located at a minimum 100' from the nearest surface hole location on the pad.
- All natural gas produced during drilling operations will be flared. Venting will only occur if there is an equipment malfunction and/or to avoid risk of an immediate and substantial adverse impact on safety, public health, or the environment.

19.15.27.8 (C) Venting and Flaring during completions or recompletions operations.

- During all phases of flowback, wells will flow through a sand separator, or other appropriate flowback separation equipment, and the well stream will be directed to a central tank battery (CTB) through properly sized flowlines
- The CTB will have properly sized separation equipment for maximum anticipated flowrates
- Multiple stages of separation will be used to separate gas from liquids. All gas will be routed to a sales outlet. Fluids will be routed to tanks equipped with a closed loop system that will recover any residual gas from the tanks and route such gas to a sales outlet.

19.15.27.8 (D) Venting and Flaring during production operations.

- During production, the well stream will be routed to the CTB where multiple stages of separation will separate gas from liquids. All gas will be routed to a sales outlet. Fluids will be routed to tanks with a closed

loop system that will recover any residual gas from the tanks and route such gas to a sales outlet, minimizing tank emissions.

- Flares are equipped with auto-ignition systems and continuous pilot operations.
- Automatic gauging equipment is installed on all tanks.

19.15.27.8 (E) Performance Standards

- Production equipment will be designed to handle maximum anticipated rates and pressure.
- Automatic gauging equipment is installed on all tanks to minimize venting
- All flared gas will be combusted in a flare stack that is properly sized and designed to ensure proper combustion.
- Flares are equipped with continuous pilots and auto-ignitors along with remote monitoring of the pilot status
- Weekly AVOs and monthly LDAR inspections will be performed on all wells and facilities that produce more than 60 Mcfd.
- Gas/H₂S detectors will be installed throughout the facilities and wellheads to detect leaks and enable timely repairs.

19.15.27.8 (F) Measurement or estimation of vented and flared natural gas

- All high pressure flared gas is measured by equipment conforming to API 14.10.
- No meter bypasses are installed.
- When metering is not practical due to low pressure/low rate, the vented or flared volume will be estimated through flare flow curves with the assistance of air emissions consultants, as necessary.

VIII. Best Management Practices: Attach a complete description of Operator's best management practices to minimize venting during active and planned maintenance.

- Ameredev will use best management practices to vent as minimally as possible during well intervention operations and downhole well maintenance
- All natural gas is routed into the gas gathering system and directed to one of Ameredev's multiple gas sales outlets.
- All venting events will be recorded and all start-up, shutdown, maintenance logs will be kept for control equipment
- All control equipment will be maintained to provide highest run-time possible
- All procedures are drafted to keep venting and flaring to the absolute minimum