

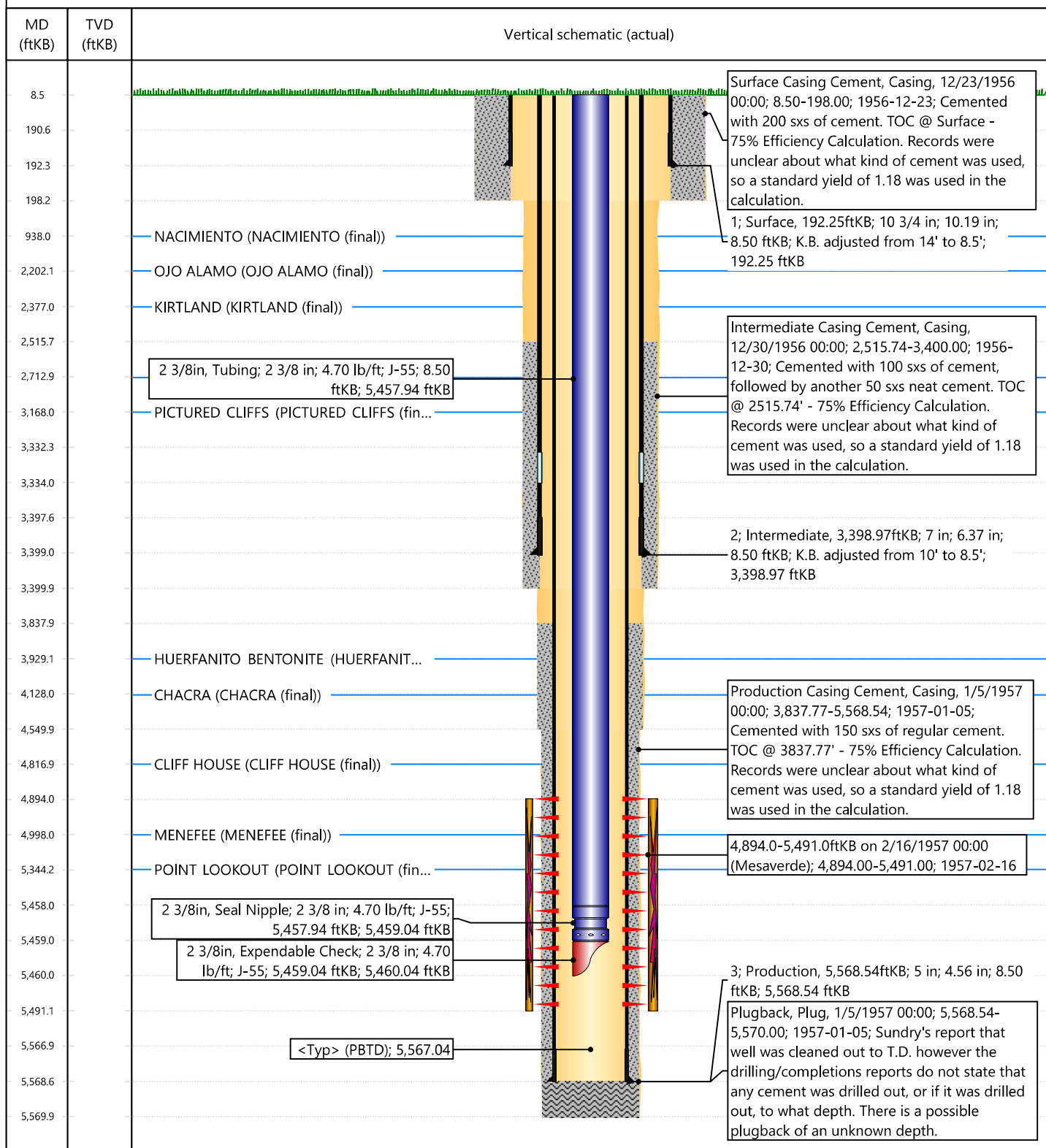


## Current Schematic - Version 3

Well Name: SAN JUAN 29-7 UNIT #58

API / UWI 3003907556	Surface Legal Location 026-029N-007W-M	Field Name BLANCO MESAVERDE (PRORATED GAS)	Route 1003	State/Province NEW MEXICO	Well Configuration Type VERTICAL
Ground Elevation (ft) 6,373.00	Original KB/RT Elevation (ft) 6,381.50	RKB to GL (ft) 8.50	KB-Casing Flange Distance (ft)	KB-Tubing Hanger Distance (ft)	

## Original Hole [VERTICAL]



**District I**  
1625 N. French Dr., Hobbs, NM 88240  
Phone:(575) 393-6161 Fax:(575) 393-0720  
**District II**  
811 S. First St., Artesia, NM 88210  
Phone:(575) 748-1283 Fax:(575) 748-9720  
**District III**  
1000 Rio Brazos Rd., Aztec, NM 87410  
Phone:(505) 334-6178 Fax:(505) 334-6170  
**District IV**  
1220 S. St Francis Dr., Santa Fe, NM 87505  
Phone:(505) 476-3470 Fax:(505) 476-3462

State of New Mexico  
Energy, Minerals and Natural Resources  
Oil Conservation Division  
1220 S. St Francis Dr.  
Santa Fe, NM 87505

CONDITIONS

Action 251812

CONDITIONS

Operator: HILCORP ENERGY COMPANY 1111 Travis Street Houston, TX 77002	OGRID: 372171
	Action Number: 251812
	Action Type: [UF-WBS] Wellbore Schematic (WELLBORE SCHEMATICS)

CONDITIONS

Created By	Condition	Condition Date
mkuehling	for record	9/14/2023