

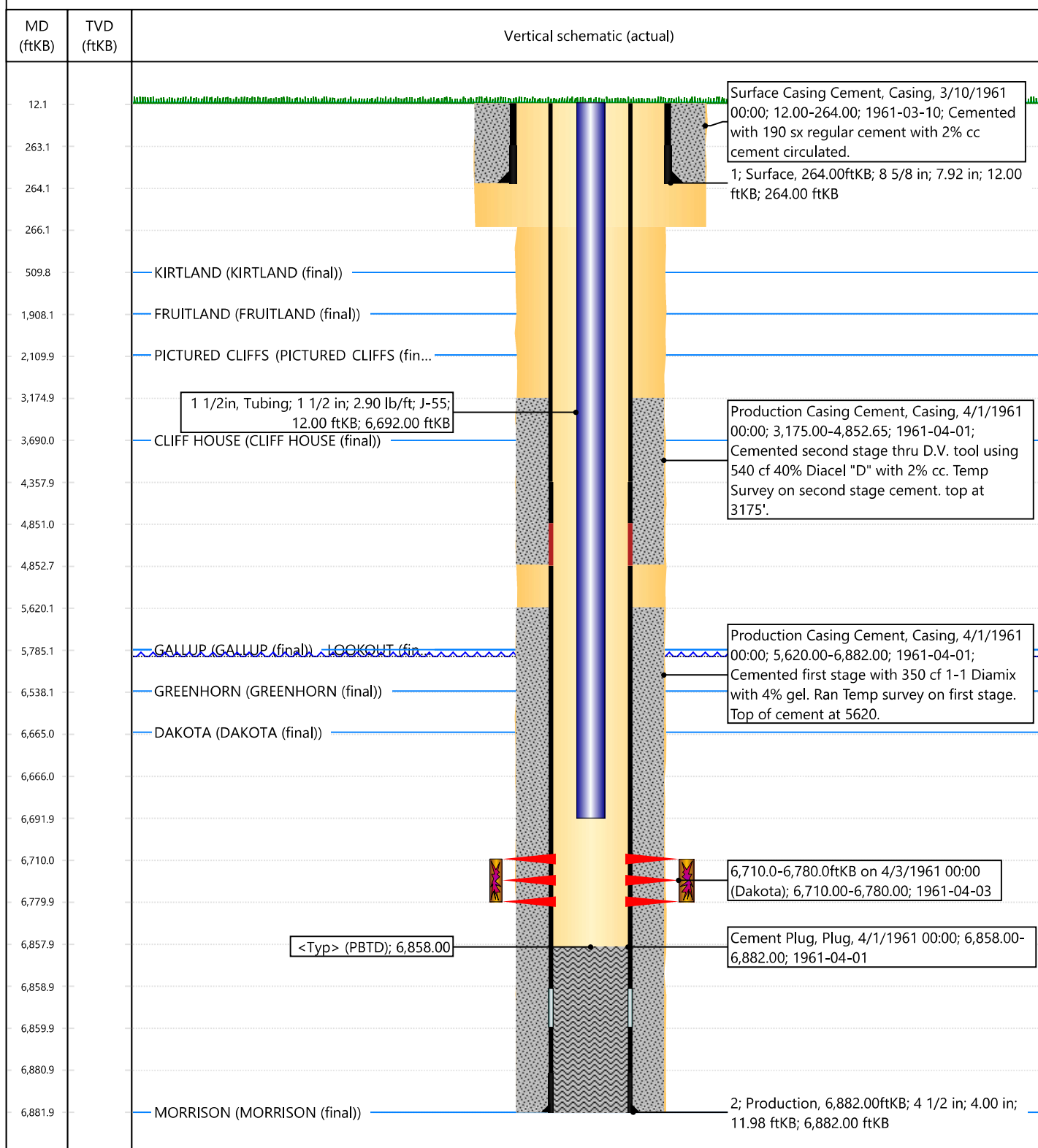


## Current Schematic - Version 3

Well Name: TALIAFERRO #2

|                                   |   |   |                                |                                |                         |
|-----------------------------------|---|---|--------------------------------|--------------------------------|-------------------------|
| API / UWI<br>3004510066           | Surface Legal Location<br>031-031N-012W-M | Field Name<br>BASIN DAKOTA (PRORATED GAS) | Route<br>0203                  | State/Province<br>NEW MEXICO   | Well Configuration Type |
| Ground Elevation (ft)<br>5,890.00 | Original KB/RT Elevation (ft)<br>5,902.00 | RKB to GL (ft)<br>12.00                   | KB-Casing Flange Distance (ft) | KB-Tubing Hanger Distance (ft) |                         |

## Original Hole





**District I**  
1625 N. French Dr., Hobbs, NM 88240  
Phone:(575) 393-6161 Fax:(575) 393-0720  
**District II**  
811 S. First St., Artesia, NM 88210  
Phone:(575) 748-1283 Fax:(575) 748-9720  
**District III**  
1000 Rio Brazos Rd., Aztec, NM 87410  
Phone:(505) 334-6178 Fax:(505) 334-6170  
**District IV**  
1220 S. St Francis Dr., Santa Fe, NM 87505  
Phone:(505) 476-3470 Fax:(505) 476-3462

**State of New Mexico**  
**Energy, Minerals and Natural Resources**  
**Oil Conservation Division**  
**1220 S. St Francis Dr.**  
**Santa Fe, NM 87505**

CONDITIONS

Action 248670

CONDITIONS

|  |   |
|--|---|
| Operator:<br>HILCORP ENERGY COMPANY<br>1111 Travis Street<br>Houston, TX 77002 | OGRID:<br>372171  |
|  | Action Number:<br>248670  |
|  | Action Type:<br>[UF-WBS] Wellbore Schematic (WELLBORE SCHEMATICS) |

CONDITIONS

| Created By | Condition  | Condition Date |
|------------|------------|----------------|
| mkuehling  | for record | 9/14/2023      |