

<b>Well Name:</b> SAN JUAN 29-7 UNIT	<b>Well Location:</b> T29N / R7W / SEC 1 / NESW / 36.752384 / -107.526149	<b>County or Parish/State:</b> RIO ARRIBA / NM
<b>Well Number:</b> 85B	<b>Type of Well:</b> CONVENTIONAL GAS WELL	<b>Allottee or Tribe Name:</b>
<b>Lease Number:</b> NMSF078945	<b>Unit or CA Name:</b> SAN JUAN 29-7 UNIT--MV	<b>Unit or CA Number:</b> NMNM78417A
<b>US Well Number:</b> 3003925667	<b>Well Status:</b> Producing Gas Well	<b>Operator:</b> HILCORP ENERGY COMPANY

### Notice of Intent

**Sundry ID:** 2754400

**Type of Submission:** Notice of Intent

**Type of Action:** Plug and Abandonment

**Date Sundry Submitted:** 10/02/2023

**Time Sundry Submitted:** 03:44

**Date proposed operation will begin:** 10/15/2023

**Procedure Description:** Hilcorp Energy Company requests permission to P&A the subject well per the attached procedures, current and proposed wellbore schematics. The Pre-Disturbance Site Visit was held on 06/14/2023 with Roger Herrera, BLM. The Re-Vegetation Plan is attached. A closed loop system will be used.

### Surface Disturbance

**Is any additional surface disturbance proposed?:** No

### NOI Attachments

#### Procedure Description

SJ\_29\_7\_Unit\_85B\_PA\_NOI\_20231002154342.pdf

**Well Name:** SAN JUAN 29-7 UNIT

**Well Location:** T29N / R7W / SEC 1 /  
NESW / 36.752384 / -107.526149

**County or Parish/State:** RIO  
ARRIBA / NM

**Well Number:** 85B

**Type of Well:** CONVENTIONAL GAS  
WELL

**Allottee or Tribe Name:**

**Lease Number:** NMSF078945

**Unit or CA Name:** SAN JUAN 29-7  
UNIT--MV

**Unit or CA Number:**  
NMNM78417A

**US Well Number:** 3003925667

**Well Status:** Producing Gas Well

**Operator:** HILCORP ENERGY  
COMPANY

### Conditions of Approval

#### Specialist Review

General\_Requirement\_PxA\_20231003175751.pdf

29N07W01\_San\_Juan\_29\_7\_Unit\_Geo\_KR\_20231003175750.pdf

2754400\_NOIA\_85B\_3003925667\_KR\_10032023\_20231003175750.pdf

### Operator

*I certify that the foregoing is true and correct. Title 18 U.S.C. Section 1001 and Title 43 U.S.C. Section 1212, make it a crime for any person knowingly and willfully to make to any department or agency of the United States any false, fictitious or fraudulent statements or representations as to any matter within its jurisdiction. Electronic submission of Sundry Notices through this system satisfies regulations requiring a*

**Operator Electronic Signature:** CHERYLENE WESTON

**Signed on:** OCT 02, 2023 12:18 PM

**Name:** HILCORP ENERGY COMPANY

**Title:** Operations/Regulatory Tech - Sr

**Street Address:** 1111 TRAVIS STREET

**City:** HOUSTON

**State:** TX

**Phone:** (713) 289-2615

**Email address:** CWESTON@HILCORP.COM

### Field

**Representative Name:**

**Street Address:**

**City:**

**State:**

**Zip:**

**Phone:**

**Email address:**

### BLM Point of Contact

**BLM POC Name:** KENNETH G RENNICK

**BLM POC Title:** Petroleum Engineer

**BLM POC Phone:** 5055647742

**BLM POC Email Address:** krennick@blm.gov

**Disposition:** Approved

**Disposition Date:** 10/03/2023

**Signature:** Kenneth Rennick



**HILCORP ENERGY COMPANY**  
**San Juan 29-7 Unit 85B**  
**NOTICE OF INTENT TO PERMANENTLY ABANDON**

<b>API #:</b>	3003925667
---------------	------------

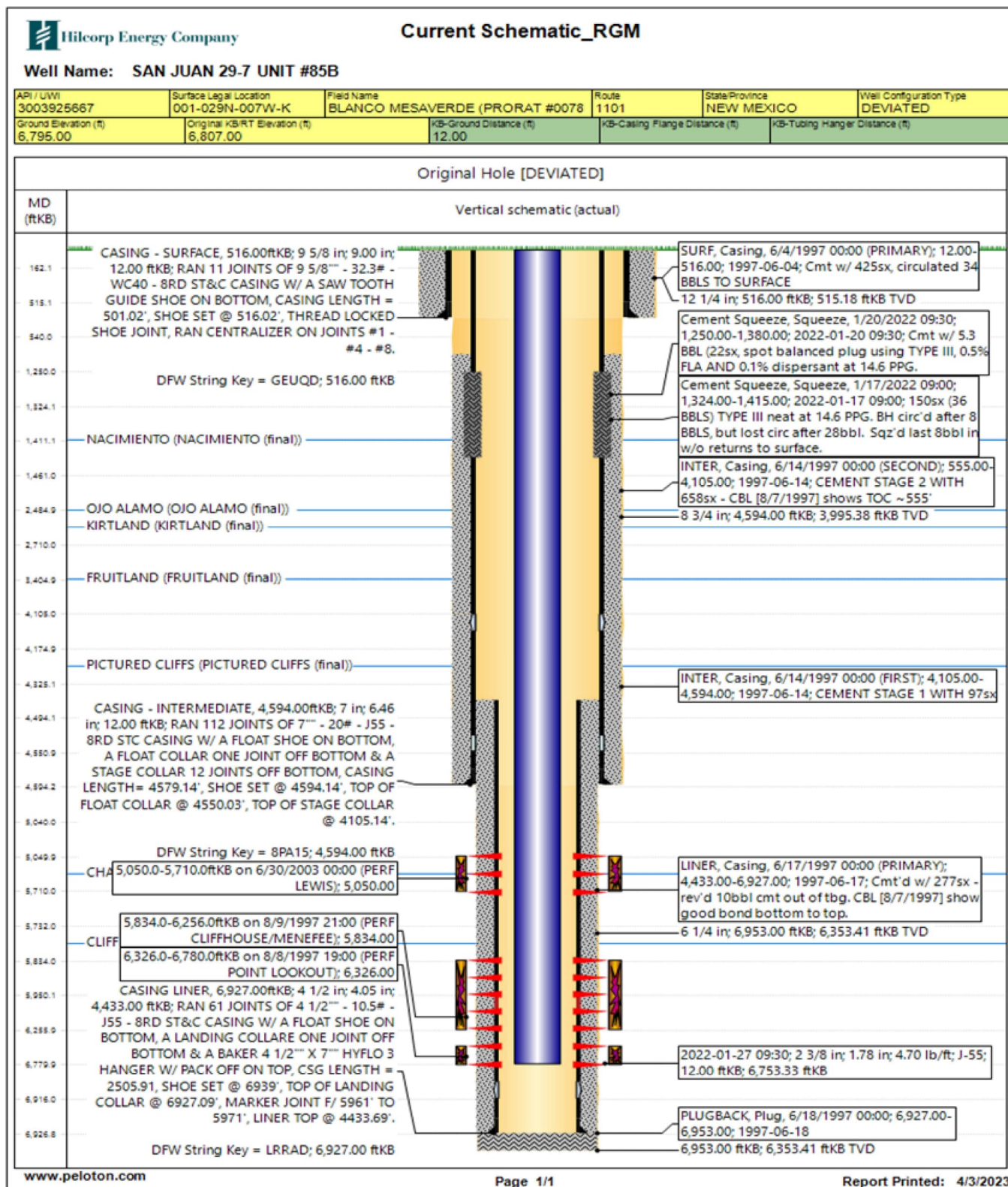
**JOB PROCEDURES**

- |                                     |       |  |
|-------------------------------------|-------|--|
| <input checked="" type="checkbox"/> | NMOCD | <b>Contact OCD and BLM (where applicable) 24 hrs prior to MIRU. Comply with all NMOCD, BLM (where applicable), and HEC safety and environmental regulations.</b> |
| <input checked="" type="checkbox"/> | BLM   |  |
1. MIRU service rig and associated equipment, record all pressures on wellbore.
  2. Load well, ND tree, NU BOPs and test. POOH w/ 2-3/8" 4.7# production tubing.
  3. MU 4-1/2" 10.5# bit/scrapper, trip to clear csg to 5,740', POOH. MU 4-1/2" 10.5# CICR and set @ 5,730' (CH Top Perf @ 5,834').
  4. **Plug #1 | 5,730' - 5,930' (CICR @ 5,730' | Cliff House Top Perf: 5,834')** Pump 14sx (3.4 bbl) Class III "Select" cement and displace a 200' inside plug below the CICR.
  5. MU 4-1/2" 10.5# CICR and set @ 5,040' (Lewis Top Perf 5,050' | Chacra Top @ 5,280').
  6. **Plug #2 | 5,040' - 5,280' (Lewis Top Perf 5,050' | Chacra Top @ 5,280')** Pump 32sx (7.8 bbl) Class III "Select" cement and displace a 240' inside plug +100% below the CICR. (480' volume equivalent)
  7. Circulate and condition hole with inhibited brine, pressure test the 4-1/2" & 7" to 560psi for 30 minutes on a chart.  
*\*All plugs will be tagged until a passing pressure test is achieved.*
  8. **Plug #3 | 4,494' - 4,644' (7" Shoe @ 4,594')** Pump 25sx (6.1bbl) Class III "Select" cement and spot a 150' inside plug over the 7" casing shoe.
  9. **Plug #4 | 4,175' - 4,325' (Pictured Cliffs Top @ 4,275')** Pump 25sx (6.1bbl) Class III "Select" cement and spot a 150' inside plug over the Pictured Cliffs Top.
  10. **Plug #5 | 3,305' - 3,455' (Fruitland Top @ 3,405')** Pump 25sx (6.1 bbl) Class III "Select" cement and spot a 150' inside plug over the Fruitland Top.
  11. **Plug #6 | 2,385' - 2,710' (Ojo Top @ 2,485' | Kirtland Top @ 2,660')** Pump 54sx (13.2 bbl) Class III "Select" cement and spot a 325' inside plug over the Ojo & Kirtland Tops.  
*Plugs will be split & NMOCD/BLM will be notified if BH pressure is present.*
  12. **Plug #7 | 1,311' - 1,461' (Nacimiento Top @ 1,411')** Pump 25sx (6.1 bbl) Class III "Select" cement and spot a 150' inside plug over the Nacimiento Top. POOH w/ WS.
  13. RU ELU, run CBL from 1,300' to surface. Remedial squeeze ops from 2022 suggests 20bbl cmt circulate up BH but did not reach surface.  
*\*CBL results will determine plugging design from surface shoe to surface (plugs below).*
  14. RU ELU, RIH w/ circ charges, perforate 7" @ 540'. CBL [8/7/1997] shows TOC ~550'. Establish circulation up 9-5/8" x 7" annulus.  
**Plug #8 | 340' - 540' (Surface Shoe @ 516' | TOC ~550' behind 7")** Pump 51sx (12.4 bbl) Class III "Select" cement and spot 100' inside plug + 100% excess to cover the surface shoe from 340' - 540'.
  15. RU ELU, RIH w/ circ charges, perforate 7" @ 162', CBL [8/7/1997] shows TOC ~550'. Establish circulation up 9-5/8" x 7" annulus.  
**Plug #9 | 12' - 162' (Surface Plug)** Pump 45sx (11.0 bbl) Class III "Select" cement and spot a 150' inside plug to cover the surface.
  16. LD tubing, ND BOP and cut off wellhead below surface casing flange as per NMOCD. Top off cement at surface as needed. Weld new P&A maker.



# **HILCORP ENERGY COMPANY** **San Juan 29-7 Unit 85B** **NOTICE OF INTENT TO PERMANENTLY ABANDON**

## **San Juan 29-7 Unit 85B - CURRENT WELLBORE SCHEMATIC**

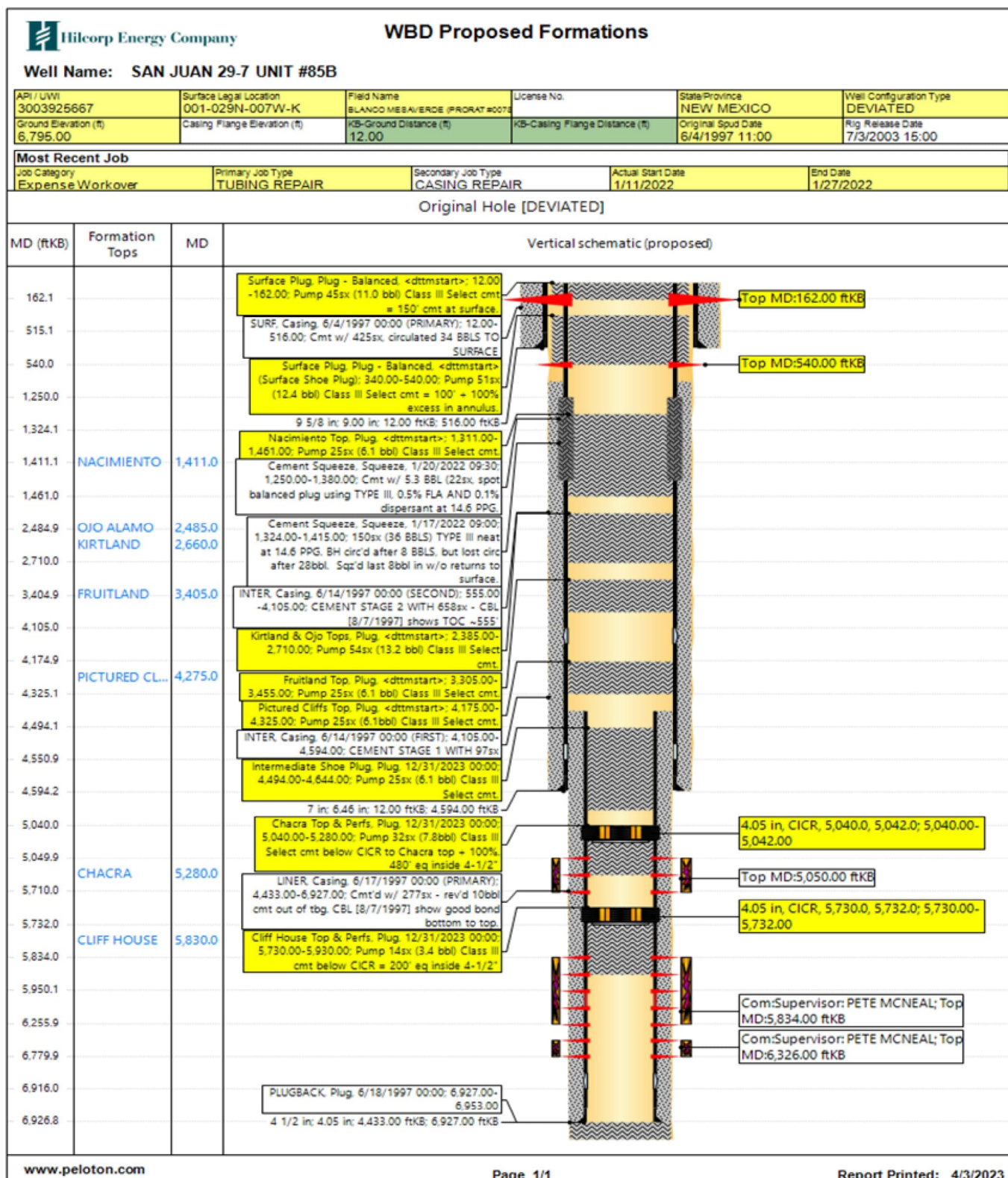






**HILCORP ENERGY COMPANY**  
**San Juan 29-7 Unit 85B**  
**NOTICE OF INTENT TO PERMANENTLY ABANDON**

**San Juan 29-7 Unit 85B - PROPOSED P&A SCHEMATIC**



## Hilcorp Energy

San Juan 29-7 Unit 85B

36.75275, -107.5257

API-30-039-25667

29N-07W SEC 01

## Final Reclamation Plan

Onsite Completed on 06/14/2032 with Roger Herrera

1. Defer Final Reclamation till the 29-7 Unit 85, and 29-7 Unit 85C are P&A'd.
2. Strip equipment for 29-7 Unit 85B off facility.

**District I**  
1625 N. French Dr., Hobbs, NM 88240  
Phone:(575) 393-6161 Fax:(575) 393-0720  
**District II**  
811 S. First St., Artesia, NM 88210  
Phone:(575) 748-1283 Fax:(575) 748-9720  
**District III**  
1000 Rio Brazos Rd., Aztec, NM 87410  
Phone:(505) 334-6178 Fax:(505) 334-6170  
**District IV**  
1220 S. St Francis Dr., Santa Fe, NM 87505  
Phone:(505) 476-3470 Fax:(505) 476-3462

**State of New Mexico**  
**Energy, Minerals and Natural Resources**  
**Oil Conservation Division**  
**1220 S. St Francis Dr.**  
**Santa Fe, NM 87505**

CONDITIONS

Action 272264

CONDITIONS

Operator: HILCORP ENERGY COMPANY 1111 Travis Street Houston, TX 77002	OGRID: 372171
	Action Number: 272264
	Action Type: [C-103] NOI Plug & Abandon (C-103F)

CONDITIONS

Created By	Condition	Condition Date
mkuehling	perforate at surface shoe - wait 30 minutes then proceed - Notify NMOCD 24 hours prior to moving on	10/16/2023