

Submit 1 Copy To Appropriate District Office
 District I – (575) 393-6161
 1625 N. French Dr., Hobbs, NM 88240
 District II – (575) 748-1283
 811 S. First St., Artesia, NM 88210
 District III – (505) 334-6178
 1000 Rio Brazos Rd., Aztec, NM 87410
 District IV – (505) 476-3460
 1220 S. St. Francis Dr., Santa Fe, NM 87505

State of New Mexico
 Energy, Minerals and Natural Resources

Form C-103
 Revised July 18, 2013

OIL CONSERVATION DIVISION
 1220 South St. Francis Dr.
 Santa Fe, NM 87505

SUNDRY NOTICES AND REPORTS ON WELLS (DO NOT USE THIS FORM FOR PROPOSALS TO DRILL OR TO DEEPEN OR PLUG BACK TO A DIFFERENT RESERVOIR. USE "APPLICATION FOR PERMIT" (FORM C-101) FOR SUCH PROPOSALS.) 1. Type of Well: Oil Well <input checked="" type="checkbox"/> Gas Well <input type="checkbox"/> Other <input type="checkbox"/>		WELL API NO. 30-005-29025
2. Name of Operator Cano Petro on NM. INC		5. Indicate Type of Lease STATE <input checked="" type="checkbox"/> FEE <input type="checkbox"/>
3. Address of Operator 801 Cherry Street Unit 25 Suite 3200 Fort Worth, Texas 76102		6. State Oil & Gas Lease No.
4. Well Location Unit Letter: E : 2591 feet from the N line and 1305 feet from the W line Section 14 Township 08S Range 30E NMPM County: Chaves		7. Lease Name or Unit Agreement Name Cato San Andres
11. Elevation (Show whether DR, RKB, RT, GR, etc.)		8. Well Number: 586
9. OGRID Number: 248802		10. Pool name or Wildcat Cato; San Andres

12. Check Appropriate Box to Indicate Nature of Notice, Report or Other Data

NOTICE OF INTENTION TO: PERFORM REMEDIAL WORK <input type="checkbox"/> PLUG AND ABANDON <input type="checkbox"/> TEMPORARILY ABANDON <input type="checkbox"/> CHANGE PLANS <input type="checkbox"/> PULL OR ALTER CASING <input type="checkbox"/> MULTIPLE COMPL <input type="checkbox"/> DOWNHOLE COMMINGLE <input type="checkbox"/> CLOSED-LOOP SYSTEM <input type="checkbox"/> OTHER: <input type="checkbox"/>		SUBSEQUENT REPORT OF: REMEDIAL WORK <input type="checkbox"/> ALTERING CASING <input type="checkbox"/> COMMENCE DRILLING OPNS. <input type="checkbox"/> P AND A <input checked="" type="checkbox"/> CASING/CEMENT JOB <input type="checkbox"/> OTHER: <input type="checkbox"/>	
--	--	--	--

13. Describe proposed or completed operations. (Clearly state all pertinent details, and give pertinent dates, including estimated date of starting any proposed work). SEE RULE 19.15.7.14 NMAC. For Multiple Completions: Attach wellbore diagram of proposed completion or recompletion.

See Plugging Procedure/Events Below

Spud Date:

Rig Release Date:

I hereby certify that the information above is true and complete to the best of my knowledge and belief.

SIGNATURE

TITLE: Authorized Representative DATE: 10/2/23

Type or print name: Ethan Wakefield

E-mail address: e.wakefield@dwsrigs.com

PHONE: (405)343-7736

For State Use Only

APPROVED BY: John Garcia

TITLE

Supervisor

DATE 10/24/23

Conditions of Approval (if any):

Cano Petro

Plug And Abandonment End Of Well Report

Cato San Andres #586

2591' FNL & 1305' FWL, Section 14, 08S, 30E

Chaves County, NM / API 30-005-29025

Work Summary:

- 9/20/23** Made BLM and NMOCD P&A operations notifications at 9:00 AM MST.
- 9/21/23** Moved rig to Roswell. MOL. Fixed roads and location. Performed rig services. Levelled unit. Shut down for the day.
- 9/22/23** Arrived on location and held safety meeting. Checked well pressures. Tubing: 0 psi, Casing: 0 psi Bradenhead: 0 psi. R/U P&A unit. Began to L/D rods. L/D 107 and rod string parted. NU BOP and function tested. R/U floor, tongs, slips. L/D 2-7/8" tubing. L/D tubing until rods were seen. Switch over to rods. Hooked onto rods and tried to work free but had to back off rod. L/D 36 3/4" rods. Switched back to tubing. L/D 110 joints. P/U 5.5" casing scraper. TIH to 3450'. Begin to TOOH. Secured and shut in well.
- 9/23/23** Arrived on location and held safety meeting. Checked well pressures. Tubing: 0 psi, Casing: 0 psi Bradenhead: 0 psi. Continued to TOOH with casing scraper. L/D scraper. P/U CR. TIH and set CR at 3400'. R/U cementing services. Circulated hole clean with 90 bbls. Successfully pressure tested casing to 800 psi. Load BH with 1.5 bbls of fresh water and successfully pressure tested to 300 psi. TOOH. R/U wireline services. TIH and logged well. POOH. TIH with tubing. R/U cementing services. Pumped plug #1 from 3400' to 3189' to cover the San Andres perforations. L/D tubing. R/U cementing services. Pumped Mud/gel spacer from 3180'-2775'. L/D tubing. R/U cementing services. Pumped plug #2 from 2775'-2555' to cover the San Andres formation top. L/D tubing. R/U cementing services. Pumped Mud/gel spacer from 2555'-2368'. L/D tubing. R/U

cementing services. Pumped plug #3 from 2368'-2148' to cover the Grayburg formation top. L/D tubing. R/U cementing services. Pumped Mud/gel spacer from 2148'-1715'. L/D tubing. R/U cementing services. Pumped plug #4 from 1715'-1352' to cover the Tansill, Yates, Seven Rivers formation tops. L/D tubing. R/U cementing services. Pumped Mud/gel spacer from 1352'-1089'. L/D tubing. R/U cementing services. Pumped plug #5 from 1089'-750' to cover the surface casing shoe and Rustler formation top. L/D tubing. R/U cementing services. Pumped mud/gel spacer from 750'-600'. L/D tubing. R/U cementing services. Pumped plug #6 from 600'-surface. R/D floor, tongs, slips. ND BOP. R/D equipment and prepare to MOL.

6/24/23 Arrived on location and held safety meeting. Used backhoe to safely expose wellhead. Set up welding unit on location. Performed wellhead cutoff. Removed old wellhead. Tagged cement at Surface inside and tagged at 30' outside. Filled casing to surface with 13 sacks. Welder attached marker per NMOCD regulations.

Plug Summary:

Plug #1: (San Andres Perforations, 3,400-3,180', 25 Sacks Type I/II Cement)

P/U CR. TIH and set CR at 3400'. R/U cementing services. Circulated hole clean with 90 bbls. Successfully pressure tested casing to 800 psi. Load BH with 1.5 bbls of fresh water and successfully pressure tested to 300 psi. TOOH. R/U wireline services. TIH and logged well. POOH. TIH with tubing. R/U cementing services. Pumped plug #1 from 3400' to 3180' to cover the San Andres perforations.

Plug #2: (San Andres Formation Top 2,775 -2,555', 25 Sacks Type I/II Cement)

L/D tubing. R/U cementing services. Pumped plug #2 from 2775'-2555' to cover the San Andres formation top.

Plug #3: (Grayburg Formation Top, 2,368' to 2,148', 25 Sacks Type I/II Cement)

L/D tubing. R/U cementing services. Pumped plug #3 from 2368'-2148' to cover the Grayburg formation top.

Plug #4: (Seven Rivers, Yates, and Tansill Formation Tops, 1,715' to 1,352', 42 Sacks Type I/II Cement)

L/D tubing. R/U cementing services. Pumped plug #4 from 1715'-1352' to cover the Tansill, Yates, Seven Rivers formation tops.

Plug #5: (Rustler Formation Top and Surface Casing Shoe, 1,089' to 750', 38 Sacks Type I/II Cement)

L/D tubing. R/U cementing services. Pumped plug #5 from 1089'-750' to cover the surface casing shoe and Rustler formation top.

Plug #6: (Surface, 600' to Surface', 81 Sacks Type I/II Cement (13 sx for top off))

L/D tubing. R/U cementing services. Pumped Plug #6 from 600'-surface. Performed wellhead cutoff. Removed old wellhead. Tagged cement at Surface inside and tagged at 30' outside. Filled casing to surface with 13 sacks. Welder attached marker per NMOCD regulations.

Completed Wellbore Diagram

Cano Petro Of New Mexico
Cato San Andres #586
API: 30-005-29025
Chaves County, New Mexico

Surface Casing

8.625" 24# @ 850 ft
OH: 12.25"

Plug 6

600 feet - Surface
600 foot plug
81 Sacks of Type I/II Cement

Plug 5

1089 feet - 750 feet
339 foot plug
38 Sacks of Type I/II Cement

Plug 4

1715 feet - 1352 feet
363 foot plug
42 Sacks of Type I/II Cement

Plug 3

2368 feet - 2148 feet
220 foot plug
25 Sacks of Type I/II Cement

Plug 2

2775 feet - 2555 feet
220 foot plug
25 sacks of Type I/II Cement

Plug 1

3400 feet - 3180 feet
220 foot plug
25 sacks of Type I/II Cement

Perforations

3450 feet - 3625 feet

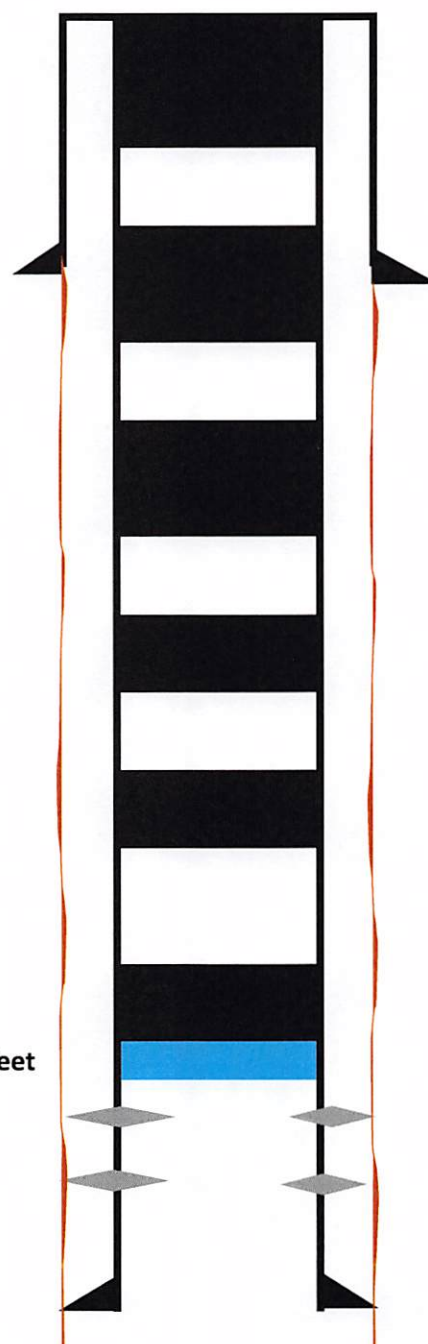
Formation

Ruslter - 1039'
Tansill - 1452'
Yates - 1570'
Seven Rivers - 1665'
Grayburg - 2318'
San Andres - 2725'

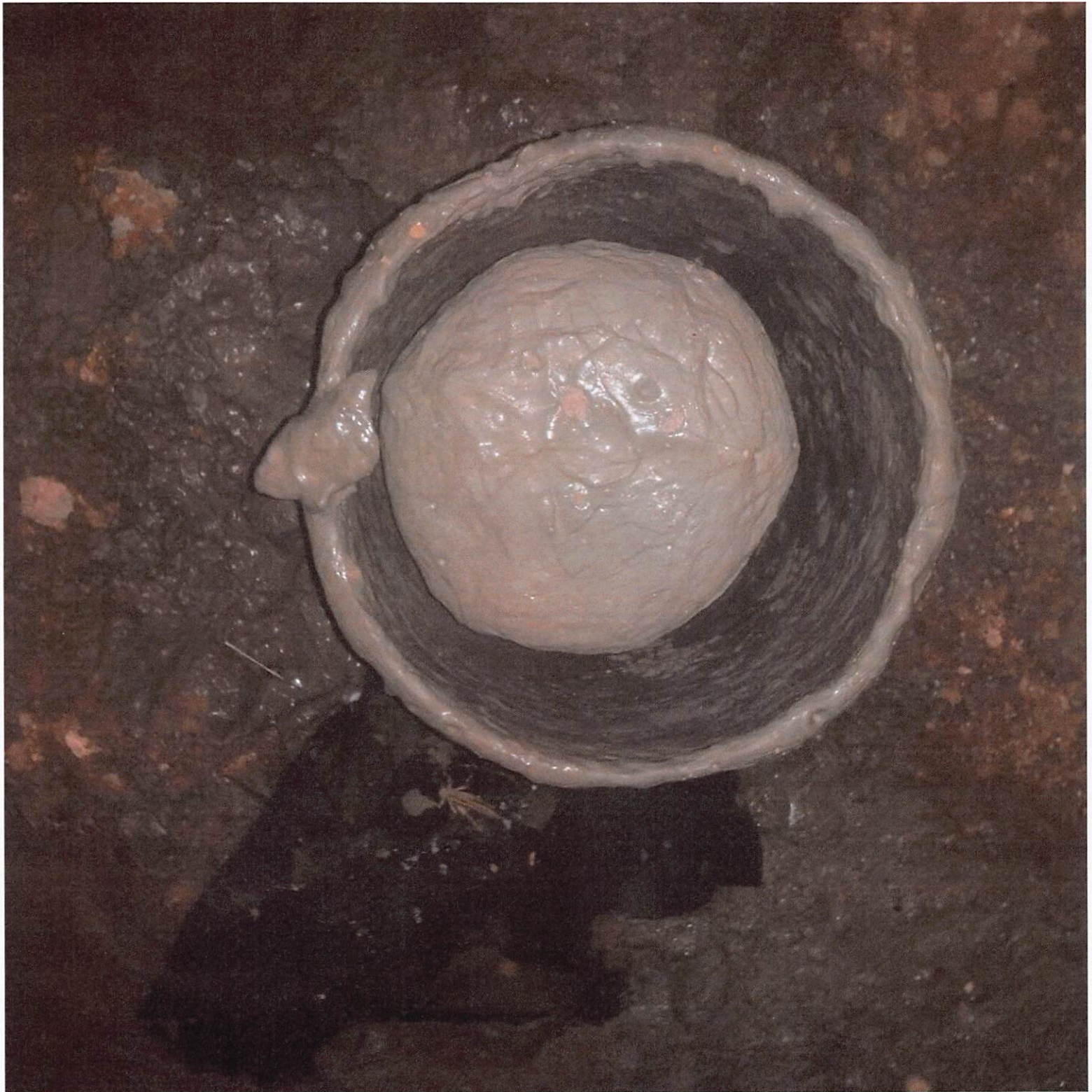
Retainer @ 3400 feet

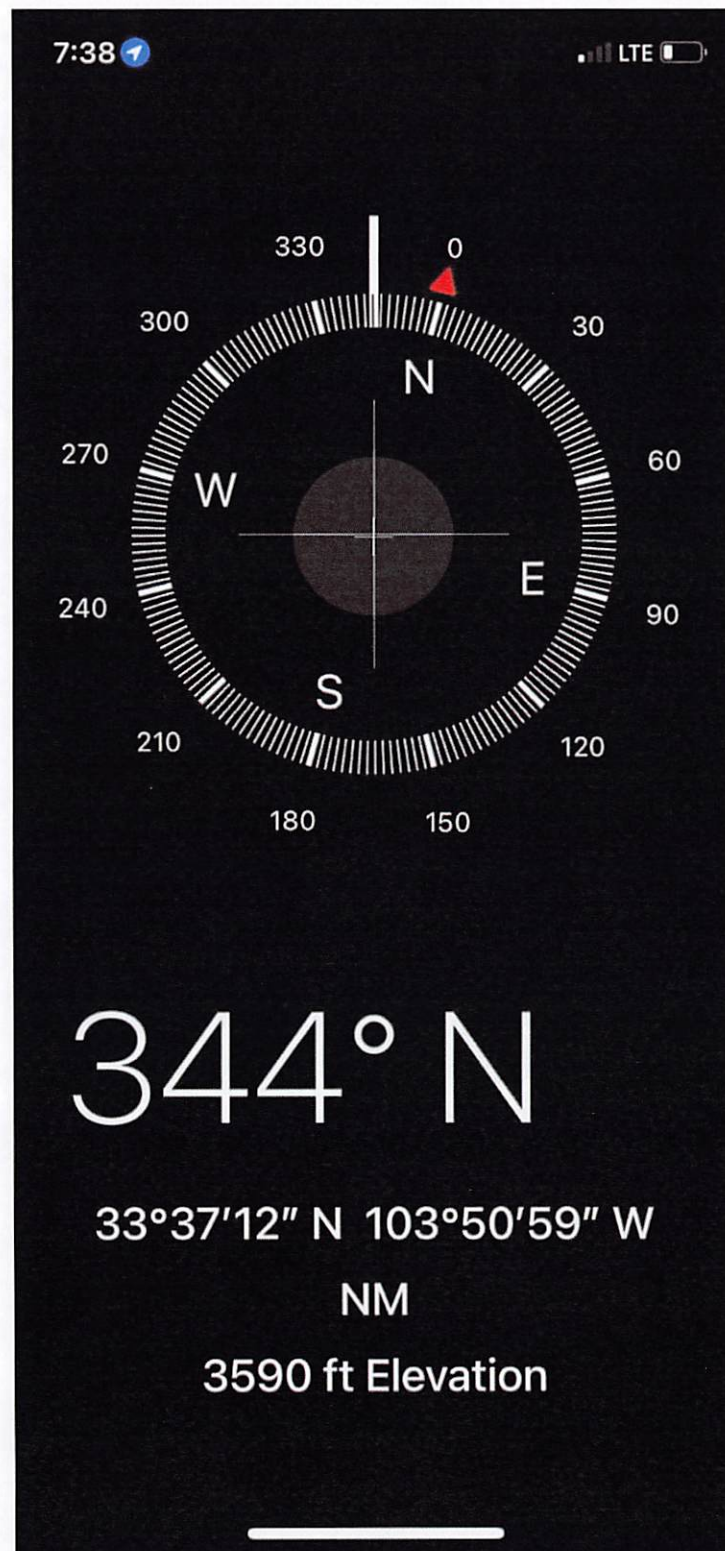
Production Casing

5.5" 15.5# @ 3995 feet
OH: 7.875"











District I
1625 N. French Dr., Hobbs, NM 88240
Phone:(575) 393-6161 Fax:(575) 393-0720

District II
811 S. First St., Artesia, NM 88210
Phone:(575) 748-1283 Fax:(575) 748-9720

District III
1000 Rio Brazos Rd., Aztec, NM 87410
Phone:(505) 334-6178 Fax:(505) 334-6170

District IV
1220 S. St Francis Dr., Santa Fe, NM 87505
Phone:(505) 476-3470 Fax:(505) 476-3462

State of New Mexico
Energy, Minerals and Natural Resources
Oil Conservation Division
1220 S. St Francis Dr.
Santa Fe, NM 87505

CONDITIONS

Action 278674

CONDITIONS

Operator: J.A. Drake Well Service Inc. 607 W Pinon Farmington, NM 87401	OGRID: 330485
	Action Number: 278674
	Action Type: [C-103] Sub. Plugging (C-103P)

CONDITIONS

Created By	Condition	Condition Date
jagarcia	None	10/24/2023