

Submit 1 Copy To Appropriate District Office
 District I – (575) 393-6161
 1625 N. French Dr., Hobbs, NM 88240
 District II – (575) 748-1283
 811 S. First St., Artesia, NM 88210
 District III – (505) 334-6178
 1000 Rio Brazos Rd., Aztec, NM 87410
 District IV – (505) 476-3460
 1220 S. St. Francis Dr., Santa Fe, NM 87505

State of New Mexico
 Energy, Minerals and Natural Resources

OIL CONSERVATION DIVISION
 1220 South St. Francis Dr.
 Santa Fe, NM 87505

Form C-103
 Revised July 18, 2013

WELL API NO. 30-005-27986	
5. Indicate Type of Lease STATE <input checked="" type="checkbox"/> FEE <input type="checkbox"/>	
6. State Oil & Gas Lease No.	
7. Lease Name or Unit Agreement Name Cato San Andres	
8. Well Number: 544	
9. OGRID Number: 248802	
10. Pool name or Wildcat Cato; San Andres	
SUNDRY NOTICES AND REPORTS ON WELLS (DO NOT USE THIS FORM FOR PROPOSALS TO DRILL OR TO DEEPEN OR PLUG BACK TO A DIFFERENT RESERVOIR. USE "APPLICATION FOR PERMIT" (FORM C-101) FOR SUCH PROPOSALS.) 1. Type of Well: Oil Well <input checked="" type="checkbox"/> Gas Well <input type="checkbox"/> Other <input type="checkbox"/> 2. Name of Operator Cano Petro on NM. INC 3. Address of Operator 801 Cherry Street Unit 25 Suite 3200 Fort Worth, Texas 76102 4. Well Location Unit Letter: M : 1307 feet from the S line and 10 feet from the W line Section 11 Township 08S Range 30E NMPM County: Chaves 11. Elevation (Show whether DR, RKB, RT, GR, etc.)	

12. Check Appropriate Box to Indicate Nature of Notice, Report or Other Data

NOTICE OF INTENTION TO:		SUBSEQUENT REPORT OF:	
PERFORM REMEDIAL WORK <input type="checkbox"/>	PLUG AND ABANDON <input type="checkbox"/>	REMEDIAL WORK <input type="checkbox"/>	ALTERING CASING <input type="checkbox"/>
TEMPORARILY ABANDON <input type="checkbox"/>	CHANGE PLANS <input type="checkbox"/>	COMMENCE DRILLING OPNS. <input type="checkbox"/>	P AND A <input checked="" type="checkbox"/>
PULL OR ALTER CASING <input type="checkbox"/>	MULTIPLE COMPL <input type="checkbox"/>	CASING/CEMENT JOB <input type="checkbox"/>	
DOWNHOLE COMMINGLE <input type="checkbox"/>			
CLOSED-LOOP SYSTEM <input type="checkbox"/>			
OTHER: <input type="checkbox"/>		OTHER: <input type="checkbox"/>	

13. Describe proposed or completed operations. (Clearly state all pertinent details, and give pertinent dates, including estimated date of starting any proposed work). SEE RULE 19.15.7.14 NMAC. For Multiple Completions: Attach wellbore diagram of proposed completion or recompletion.

See Plugging Procedure/Events Below

Spud Date:

Rig Release Date:

I hereby certify that the information above is true and complete to the best of my knowledge and belief.

SIGNATURE Ethan Wakefield TITLE: Authorized Representative DATE: 9/14/23

Type or print name: Ethan Wakefield E-mail address: ewakefield@dwstrigs.com PHONE: (405)343-7736

For State Use Only

APPROVED BY: John Garcia TITLE Supervisor DATE 10/24/23

Conditions of Approval (if any):

Cano Petro

Plug And Abandonment End Of Well Report

Cato San Andres #544

1307' FSL & 10' FWL, Section 11, 08S, 30E

Chaves County, NM / API 30-005-27986

Work Summary:

- 9/3/23** Made BLM and NMOCD P&A operations notifications at 9:00 AM MST.
- 9/4/23** Arrived on location and held safety meeting. Checked well pressures. Tubing: 0 psi, Casing: 0 psi Bradenhead: 0 psi. Bled down well. Fixed roads and location. MOL. Rig up P&A unit. Service rig. Prepare rig to pull rods. Secured well and shut down for the day.
- 9/5/23** Arrived on location and held safety meeting. Checked well pressures. Tubing: 0 psi, Casing: 0 psi Bradenhead: 0 psi. L/D 130 ¾" rods, 12 7/8" rods, pump, and polished rod. N/U BOP and function tested. R/U floor, tongs, slips. L/D 110 Joints of 2-7/8" tubing. P/U 5.5" scraper. TIH with scraper to 3410'. TOOH. P/U 5.5" CR. TIH and set CR at 3360'. R/U cementing services. Circulated hole clean with 88 bbls. Successfully pressure tested casing to 800 psi. TOOH. Shut in and secured well for the day. When circulating hole 60 ppm H2S was seen. Shut down, made a plan. Pumped 3 gallons of scavenger fluid in roll off and into hole.
- 9/6/23** Arrived on location and held safety meeting. Checked well pressures. Tubing: 0 psi, Casing: 0 psi Bradenhead: 0 psi. Continue to TOOH with tubing. L/D stinger. R/U wireline services. RIH and logged well. POOH. TIH and tagged CR at 3360'. R/U cementing services. Loaded BH with 3 bbls and successfully pressure tested. Pumped plug #1 from 3360' to 3140'. L/D tubing. R/U cementing services. Pumped mud/gel spacer from 3140' to 2750'. L/D tubing. R/U cementing services. Pumped plug #2 from 2750' to 2128'. L/D tubing. R/U cementing services. Pumped mud/gel spacer from 2128' to 1692'.

L/D tubing. R/U cementing services. Pumped plug #3 from 1692' to 1358'. L/D tubing. R/U cementing services. Pumped mud/gel spacer from 1358' to 1180'. L/D tubing. R/U cementing services. Pumped plug #4 from 1180' to 960'. L/D tubing. R/U cementing services. Pumped mud/gel spacer from 960' to 577'. L/D tubing. R/U cementing services. Pumped plug #5 from 577' to surface. TOOH. R/D floor, tongs, slips. N/D BOP. Prepare to MOL.

9/12/23 Arrived on location and held safety meeting. Used backhoe to safely expose wellhead. Set up welding unit on location. Performed wellhead cutoff. Removed old wellhead. Tagged cement at surface inside and tagged at 36' outside. Filled casing to surface with 8 sacks. Welder attached marker per NMOCD regulations.

Plug Summary:

Plug #1: (San Andres Perforations, 3,360'-3,140', 25 Sacks Type I/II Cement)

P/U 5.5" CR. TIH and set CR at 3360'. R/U cementing services. Circulated hole clean with 88 bbls. Successfully pressure tested casing to 800 psi. TOOH. Logged well. TIH and tagged CR at 3360'. R/U cementing services. Loaded BH with 3 bbls and successfully pressure tested. Pumped plug #1 from 3360' to 3140'.

Plug #2: (San Andres and Grayburg Formation Tops 2,750' - 2,128', 70 Sacks Type I/II Cement)

L/D tubing. R/U cementing services. Pumped plug #2 from 2750' to 2128'.

Plug #3: (Seven Rivers, Yates, and Tansill Formation Tops, 1,692' - 1,358', 38 Sacks Type I/II Cement)

L/D tubing. R/U cementing services. Pumped plug #3 from 1692' to 1358'.

Plug #4: (Rustler Formation Top, 1,180' - 960', 25 Sacks Type I/II Cement)

L/D tubing. R/U cementing services. Pumped plug #4 from 1180' to 960'.

Plug #5: (Surface Casing Shoe, 577' to Surface', 70 Sacks Type I/II Cement (8 sx for top off))

L/D tubing. R/U cementing services. Pumped plug #5 from 577' to surface. TOOH. Performed wellhead cutoff. Removed old wellhead. Tagged cement at surface inside and tagged at 36' outside. Filled

casing to surface with 8 sacks. Welder attached marker per NMOCD regulations.

Completed Wellbore Diagram

Cano Petro Of New Mexico
Cato San Andres #544
API: 30-005-27986
Chaves County, New Mexico

Plug 5

577 feet - surface
577 foot plug
70 Sacks of Type I/II Cement

Plug 4

1180 feet - 960 feet
220 foot plug
25 Sacks of Type I/II Cement

Plug 3

1692 feet - 1358 feet
334 foot plug
38 Sacks of Type I/II Cement

Plug 2

2750 feet - 2128 feet
622 foot plug
70 Sacks of Type I/II Cement

Plug 1

3360 feet - 3140 feet
220 foot plug
25 sacks of Type I/II Cement

Perforations

3410 feet - 3586 feet

Surface Casing

8.625" 24# @ 527 ft
OH: 12.25"

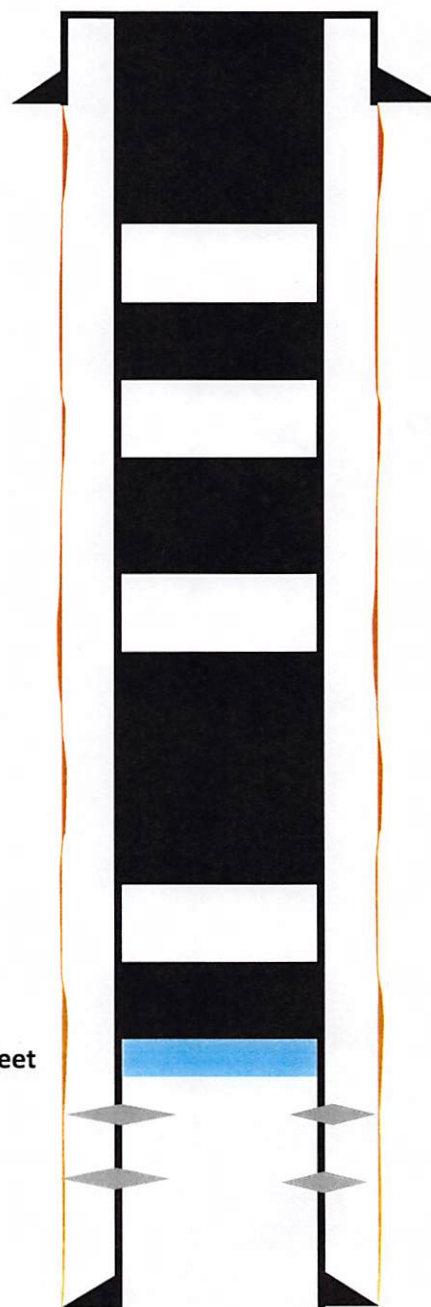
Formation

Rustler - 1130'
Tansill - 1458'
Yates - 1548'
Seven Rivers - 1642'
Grayburg - 2298'
San Andres - 2700'

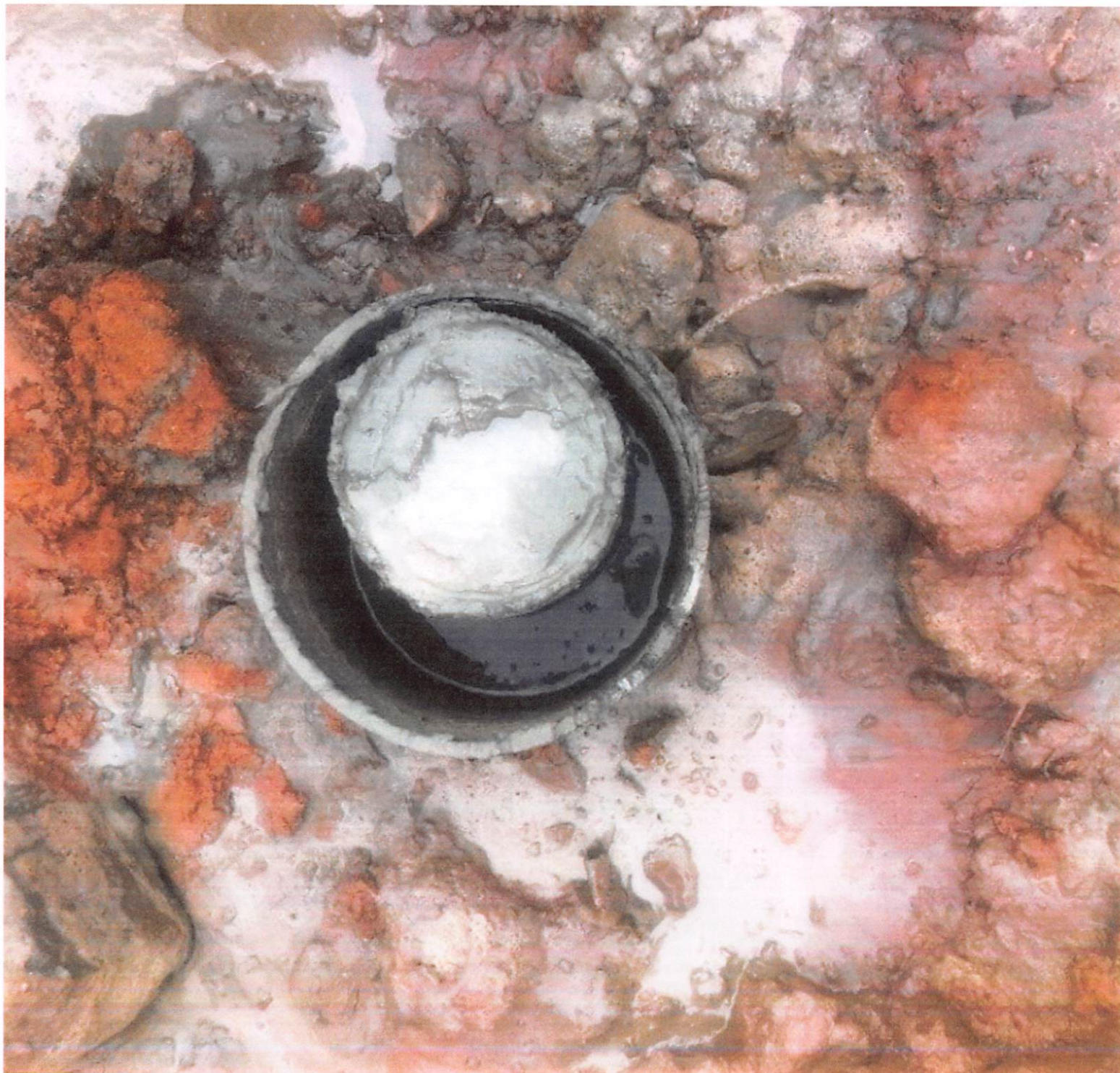
Retainer @ 3360 feet

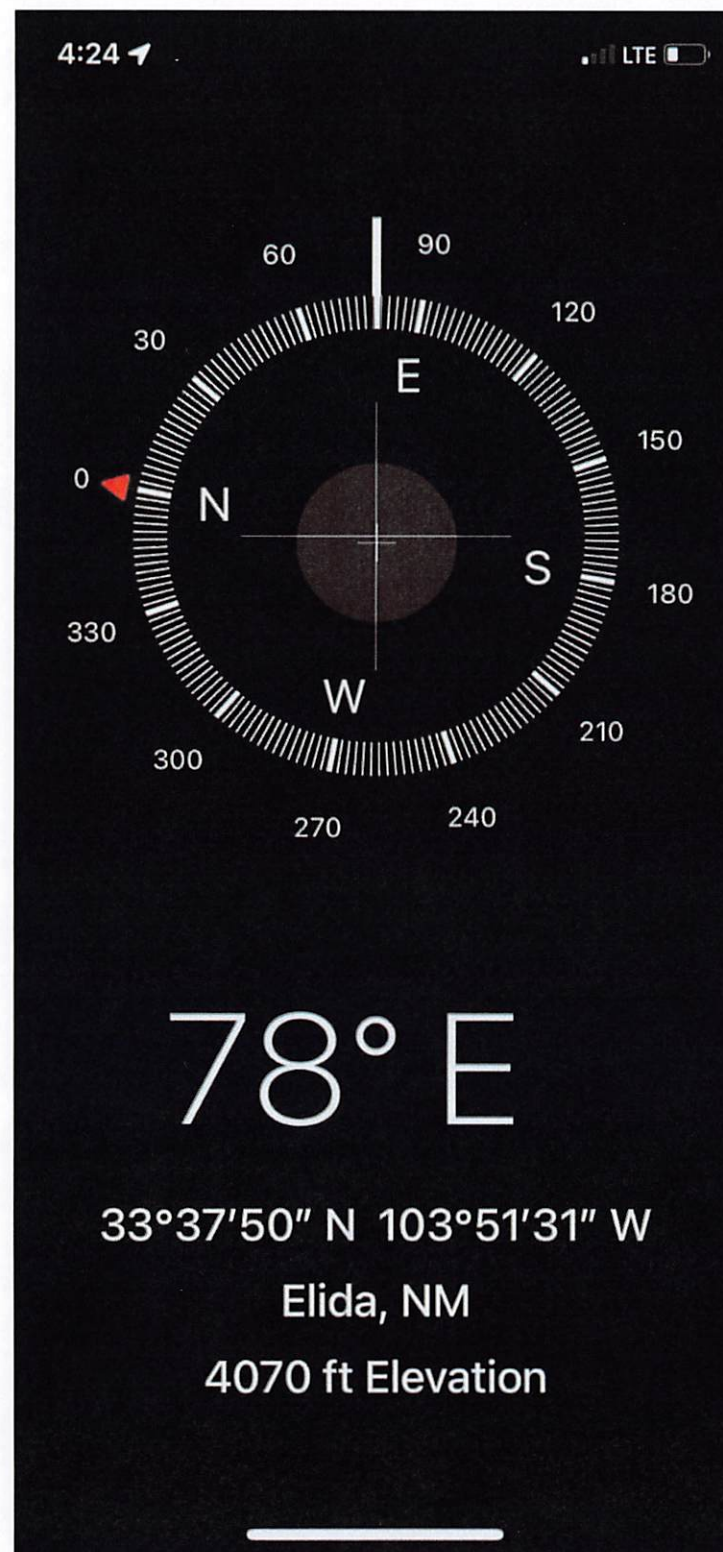
Production Casing

5.5" 15.5# @ 3940 feet
OH: 7.875"











District I
1625 N. French Dr., Hobbs, NM 88240
Phone:(575) 393-6161 Fax:(575) 393-0720
District II
811 S. First St., Artesia, NM 88210
Phone:(575) 748-1283 Fax:(575) 748-9720
District III
1000 Rio Brazos Rd., Aztec, NM 87410
Phone:(505) 334-6178 Fax:(505) 334-6170
District IV
1220 S. St Francis Dr., Santa Fe, NM 87505
Phone:(505) 476-3470 Fax:(505) 476-3462

State of New Mexico
Energy, Minerals and Natural Resources
Oil Conservation Division
1220 S. St Francis Dr.
Santa Fe, NM 87505

CONDITIONS

Action 278828

CONDITIONS

Operator: J.A. Drake Well Service Inc. 607 W Pinon Farmington, NM 87401	OGRID: 330485
	Action Number: 278828
	Action Type: [C-103] Sub. Plugging (C-103P)

CONDITIONS

Created By	Condition	Condition Date
jagarcia	Plugging of the wellbore is completed and approved, future work may be required on the marker to correct typo.	10/24/2023