

State of New Mexico
Energy, Minerals and Natural Resources

Office
District I – (575) 393-6161
1625 N. French Dr., Hobbs, NM 88240
District II – (575) 748-1283
811 S. First St., Artesia, NM 88210
District III – (505) 334-6178
1000 Rio Brazos Rd., Aztec, NM 87410
District IV – (505) 476-3460
1220 S. St. Francis Dr., Santa Fe, NM
87505

OIL CONSERVATION DIVISION
1220 South St. Francis Dr.
Santa Fe, NM 87505

SUNDRY NOTICES AND REPORTS ON WELLS (DO NOT USE THIS FORM FOR PROPOSALS TO DRILL OR TO DEEPEN OR PLUG BACK TO A DIFFERENT RESERVOIR. USE "APPLICATION FOR PERMIT" (FORM C-101) FOR SUCH PROPOSALS.) 1. Type of Well: Oil Well <input checked="" type="checkbox"/> Gas Well <input type="checkbox"/> Other <input type="checkbox"/>		WELL API NO. 30-015-22372 5. Indicate Type of Lease STATE <input checked="" type="checkbox"/> FEE <input type="checkbox"/> 6. State Oil & Gas Lease No.
2. Name of Operator Energy Acumen LLC		7. Lease Name or Unit Agreement Name BRC Madera
3. Address of Operator 10103 Gutierrez Rd NE, Albuquerque, NM 87111		8. Well Number: 001
4. Well Location Unit Letter: B : 860 feet from the N line and 1980 feet from the E line Section 29 Township 22S Range 27E NMPM County: Eddy		9. OGRID Number: 373817
11. Elevation (Show whether DR, RKB, RT, GR, etc.)		10. Pool name or Wildcat Cato; San Andres

12. Check Appropriate Box to Indicate Nature of Notice, Report or Other Data

NOTICE OF INTENTION TO:

PERFORM REMEDIAL WORK ☐ PLUG AND ABANDON ☐
 TEMPORARILY ABANDON ☐ CHANGE PLANS ☐
 PULL OR ALTER CASING ☐ MULTIPLE COMPL ☐
 DOWNHOLE COMMINGLE ☐
 CLOSED-LOOP SYSTEM ☐
 OTHER: ☐

SUBSEQUENT REPORT OF:

REMEDIAL WORK ☐ ALTERING CASING ☐
 COMMENCE DRILLING OPNS. ☐ P AND A ☒
 CASING/CEMENT JOB ☐
 OTHER: ☐

13. Describe proposed or completed operations. (Clearly state all pertinent details, and give pertinent dates, including estimated date of starting any proposed work). SEE RULE 19.15.7.14 NMAC. For Multiple Completions: Attach wellbore diagram of proposed completion or recompletion.

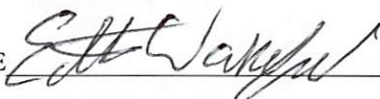
See Plugging Procedure/Events Below

Spud Date:

Rig Release Date:

I hereby certify that the information above is true and complete to the best of my knowledge and belief.

SIGNATURE



TITLE: Authorized Representative DATE: 9/28/23

Type or print name: Ethan Wakefield

E-mail address: e.wakefield@dwsrigs.com

PHONE: (405)343-7736

For State Use Only

APPROVED BY: John Garcia

TITLE Supervisor

DATE 10/24/23

Conditions of Approval (if any):

Energy Acumen LLC

Plug And Abandonment End Of Well Report

BRC Madera #001

860' FNL & 1980' FEL, Section 29, 22S, 27E

Eddy County, NM / API 30-015-22372

Work Summary:

- 8/23/23** Made BLM and NMOCD P&A operations notifications at 9:00 AM MST.
- 8/24/23** Arrived on location, held safety meeting. Prepped unit and equipment for rig move. Moved unit and equipment to location. Prepped location removed fencing around WH. Spot in equipment and unit. RU P&A rig. Wait on remaining equipment and flare stack. Spot in frac tanks. Dig around WH. Secured location.
- 8/25/23** Arrived on location and held safety meeting. Checked well pressures. Tubing: 630 psi, Casing: 630 psi Bradenhead: 0 psi. Prepped location for flare stack. Wait on flare stack. RU flare stack. Blow down tubing 630# to 60#, worked on casing valve. RU flair stack to casing. Bled casing down 630# to 60#. Prepped wellhead to pump water. Shut and secure well and eq.
- 8/26/23** Arrived on location and held safety meeting. Checked well pressures. Tubing: 280 psi, Casing: 280 psi Bradenhead: 0 psi. Attempted to bleed down well. Pumped 40 bbls of brine water down casing and 20 bbls down tubing. Killed well. ND WH, NU BOP, RU floor and equipment. Worked stuck tubing string with no luck. Wait on 2-3\8" tubing. RU sniffer with Well Done. Waited for Well Done to test well. Shut in and secured well and equipment.
- 8/27/23** Arrived on location and held safety meeting. Checked well pressures. Tubing: 0 psi, Casing: 10 psi Bradenhead: 0 psi. Bled down well. Worked stuck tubing string but was unable to free tubing. R/U wireline services. RIH and free point tubing at 11,598". POOH. R/D

wireline. TOOH with 371 joints of 2-3\8". Shut in and secure well and equipment.

8/28/23 Arrived on location and held safety meeting. Checked well pressures. Tubing: 0 psi, Casing: 20 psi Bradenhead: 0 psi. Bled down well. R/U wireline, Run gage ring. POOH. P/U bridge plug. RIH and set at 11,586'. R/D wireline. TIH with work string to 11,554'. R/U cementing services. Successfully circulated well with 388 bbls. Pumped 540 total. R/D cementers. Shut in and secured well.

8/29/23 H2S training in Roswell. DES hauled water.

8/30/23 Arrived on location and held safety meeting. Checked well pressures. Tubing: 0 psi, Casing: 0 psi Bradenhead: 0 psi. Bled down well. TOOH with all tubing. Pumped water to fill casing. R/U wireline services. TIH and logged well. POOH. R/U wireline. Shut in and secured well.

8/31/23 Arrived on location and held safety meeting. Checked well pressures. Tubing: 0 psi, Casing: 0 psi Bradenhead: 0 psi. TIH to 11,554'. R/U cementing services. Pumped plug #1 from 11,554' to approximately 10,956'. R/D cementers. L/D 20 joints. Reverse circulate at 10,925' with 65 bbls. TOOH. WOC 4 hours. TIH and tagged plug #1 at 10,920'. R/U cementing services. Pumped spacer from 10,920' to 10,380'. R/D cementing services. L/D 15 joints. R/U cementing services. Pumped plug #2 from 10,380 to 10,230'. R/D cementers. L/D 6 joints. Reverse circulate at 10,219' with 59 bbls. TOOH. WOC overnight. Shut in and secured well.

9/1/23 Arrived on location and held safety meeting. Checked well pressures. Tubing: 0 psi, Casing: 0 psi Bradenhead: 0 psi. TIH and tagged plug #2 at 10,224'. R/U cementers attempted to pressure test casing but was unsuccessful. Pumped brine water from 10,224' to 8860'. R/D cementers. L/D 42 joints. R/U cementing services. Pumped plug #3 from 8860' to 8710'. R/D cementers. L/D 6 joints. Reverse circulated at 6866' with 50 bbls. TOOH. WOC 4 hours. TIH and tagged plug #3 at 8715'. R/U cementing services. Attempted to pressure test casing but was unsuccessful. Pumped brine water from 8715' to 8525'. R/D cementers. L/D 5 joints and TOOH. R/U wireline services. RIH and perforated at 8525'. POOH. R/D wireline. TIH to 3135'. Shut in and secured well for the day.

9/2/23 Arrived on location and held safety meeting. Checked well pressures. Tubing: 0 psi, Casing: 0 psi Bradenhead: 0 psi. Bled down well. TIH to 8590'. R/U cementers. Pumped cement from 8590' to 8375'. R/D cementers. L/D 8 joints. Reverse circulated at 8350' with 45 bbls. TOOH. Put 500 psi on casing. WOC 4 hours. TIH and tagged plug #4 at 8474'. R/U cementing services. Attempted to pressure test casing

but was unsuccessful. Continued pumping plug #4 from 8474' to 8375'. R/D cementers. L/D 4 joints. Reverse circulated at 8350' with 45 bbls. TOOH. WOC 4 hours. TIH and tagged plug #4 at 8350'. R/U cementing services. Attempted to pressure test casing but was unsuccessful. Pumped brine water from 8350' to 5408'. R/D cementers. L/D 50 joints. Shut in and secured well.

9/3/23 Arrived on location and held safety meeting. Checked well pressures. Tubing: 0 psi, Casing: 0 psi Bradenhead: 0 psi. L/D 47 joints and TOOH. R/U wireline services. RIH and perforated at 5408'. POOH. TIH with tubing to 5462'. R/U cementers. Pumped plug #5 from 5462' to 5258'. R/D cementers. L/D 8 joints. Reverse circulated at 4581' with 30 bbls. TOOH. WOC 4 hours. Put 200 psi on casing. Pumped 6 bbls. TIH and tagged plug #5 at 5368'. R/U cementers. Attempted to pressure test casing but was unsuccessful. Continued pumping plug #5 from 5368' to 5258'. R/D cementers. L/D 5 joints. Reverse circulated at 4581'. TOOH. WOC overnight. Shut in and secured well and equipment.

9/4/23 Arrived on location and held safety meeting. Checked well pressures. Tubing: 0 psi, Casing: 0 psi Bradenhead: 0 psi. TIH and tagged plug #5 at 5243'. R/U cementing services. Successfully pressure tested casing to 500 psi. Pumped brine water from 5243' to 2668'. R/D cementers. L/D 81 joints and TOOH. R/U wireline services. TIH and perforated at 2668'. R/D wireline. TIH to 2727'. R/U cementing services. Pumped plug #6 from 2727' to 2518'. R/D cementers. L/D 7 joints. Reverse circulated at 2508'. TOOH. Put 500 psi on casing. WOC 4 hours. TIH and tagged at 2508'. R/U cementers. Pumped brine water from 2508' to 428'. R/D cementers. L/D tubing. R/U wireline services. RIH and perforated at 428'. Well started coming around at 360 psi. Shut in well and monitored pressure. Shut down for the day.

9/5/23 Arrived on location, held safety meeting. Waited on further instruction from state. Traveled to pick up flare stack. Spotted sack and prepared to R/U flare stack. DES hauled waste to disposal.

9/6/23 Arrived on location, held safety meeting. Rig up flare stack. Well pressures were at 200 psi. Flared well until dead. Successfully pressure tested BH. Established an injection rate of 2 bbl/min at 27 psi. Pumped cement until casing pressured up to 575 psi. Shut in well. Waited 2 hours. Well pressures were at 0 psi. ND BOP. Gas began bubbling out of cement. Shut in well.

9/7/23 Arrived on location, held safety meeting. Waited on trucks to move trac tanks. Travel to pick up bit sub and bit. Waited on trucks and equipment.

- 9/8/23** Arrived on location, held safety meeting. R/U power swivel. Attempted to TIH but bit would not clean clear wellhead. Shutdown and secured well.
- 9/9/23** Arrived on location, held safety meeting. Made up BHA. R/U swivel. Drilled cement from 0' to 76'. Shutdown and secured well overnight.
- 9/10/23** Arrived on location, held safety meeting. TIH to 76'. R/U swivel. Drilled from 76' to 181'. Shutdown and secured well overnight.
- 9/11/23** Arrived on location, held safety meeting. TIH to 181'. R/U swivel. Drilled from 181' to 296'. Shutdown and secured well overnight.
- 9/12/23** Arrived on location, held safety meeting. TIH to 296'. R/U swivel. Drilled from 296' to 392'. Shutdown and secured well overnight. DES cleaned pit and hauled to disposal.
- 9/13/23** Arrived on location, held safety meeting. TIH to 392'. R/U swivel. Drilled from 392' to 410'. Shutdown due to weather per NMOCD. Secured well.
- 9/14/23** Arrived on location, held safety meeting. TIH to 410'. R/U swivel. Drilled from 410' to 470'. Once the plug was drilled experienced a gas kick. TIH and tagged at 2570'. Shut down to get appropriate well control fluid. Secured well.
- 9/15/23** Arrived on location, held safety meeting. Wait on frac tank and brine water. R/U cementing services. pumped 130 bbls of brine water. R/U wireline services. Successfully ran a radial sector log. R/D wireline services. Wait on state for direction. Secured well.
- 9/16/23** Arrived on location, held safety meeting. R/U wireline services. RIH and perforated at 2450'. POOH. R/D wireline. TIH to 2500'. R/U cementing services. Pumped plug #7 from 2500 to approximately 2200'. TOOH. R/U wireline services. Tagged cement bridge at 723'. Drilled out cement from 723' to 943'. TIH and tagged at 2275'. Shut down and secured well.
- 9/17/23** Arrived on location, held safety meeting. TOOH. Well started displacing fluid. Installed TIW. Shut in well. Waited on kill fluid. Pumped kill fluid down hole. TOOH. R/U wireline services. RIH and perforated at 2050'. POOH. R/D wireline services. TIH to 2100'. R/U cementing services. Pumped plug #8 from 2100' to approximately 1800'. TOOH to 683'. Well pressured up and blew out kill fluid and some cement. Pumped 15 bbls down backside, did not kill well. Pumped down tubing, did not kill well. Bleed pressure to pit. TOOH. Shut in and secured well.

- 9/18/23** Arrived on location, held safety meeting. Checked well pressures. TIH and tag at 1896'. TOOH. R/U wireline services. TIH and perforate at 780' and 750'. POOH. R/D wireline services. TIH to 830'. R/U cementing services. Pumped plug #9 from 830' to 700'. TOOH. WOC. TIH and tagged plug #9 at 720'. TOOH. R/U wireline services. RIH and perforated at 200' and 220'. Pumped plug #10 from WH into perforations until cement pressured up. Secured well and shutdown.
- 9/19/23** Arrived on location, held safety meeting. Checked well pressures. Ran weighted tally tape down production casing and tagged cement at well head. P/U cement bit and bit sub. Drilled out 4'. L/D swivel. R/U NuWave wellhead cutter. NuWave unit broke down. Secured well for the day.
- 9/12/23** Arrived on location, held safety meeting. N/D BOP. R/U NuWave and cut off wellhead. Ran weighted tally down 10" casing and tagged at 20'. Cement was at surface in other strings. Ran poly line down 10" casing. R/U cementing services. Topped off casing. Welded plated and installed P/A marker per NMOCD standards. Topped off cellar. R/D and prepare to MOL.

Plug Summary:**Plug #1: (Morrow and Strawn Formation Tops, and 5" Liner Shoe, 11,554'-10,920', 77 Sacks Class H Cement)**

P/U bridge plug. RIH and set at 11,586'. Logged well. TIH to 11,554'. R/U cementing services. Pumped plug #1 from 11,554' to approximately 10,956'. R/D cementers. L/D 20 joints. Reverse circulate at 10,925' with 65 bbls. TOOH. WOC 4 hours. TIH and tagged plug #1 at 10,920'.

Plug #2: (Canyon Formation Top, 10,380'-10,224', 35 Sacks Class H Cement)

L/D 15 joints. R/U cementing services. Pumped plug #2 from 10,380 to 10,230'. R/D cementers. L/D 6 joints. Reverse circulate at 10,219' with 59 bbls. TOOH. WOC overnight. TIH and tagged plug #2 at 10,224'.

Plug #3: (Wolfcamp Formation Top, 8,860'-8,715', 35 Sacks Class H Cement)

R/U cementing services. Pumped plug #3 from 8860' to 8710'. R/D cementers. L/D 6 joints. Reverse circulated at 6866' with 50 bbls. TOOH. WOC 4 hours. TIH and tagged plug #3 at 8715'.

Plug #4: (3rd Bone Springs Formation Top, 8,590'-8,350', 73 Sacks Class H Cement)

TIH to 8590'. R/U cementers. Pumped cement from 8590' to 8375'. R/D cementers. L/D 8 joints. Reverse circulated at 8350' with 45 bbls. TOOH. Put 500 psi on casing. WOC 4 hours. TIH and tagged plug #4 at 8474'. R/U cementing services. Attempted to pressure test casing but was unsuccessful. Continued pumping plug #4 from 8474' to 8375'. R/D cementers. L/D 4 joints. Reverse circulated at 8350' with 45 bbls. TOOH. WOC 4 hours. TIH and tagged plug #3 at 8350'.

Plug #5: (Bone Springs Formation Top, 5,462'-5,243', 73 Sacks Class H Cement)

R/U wireline services. RIH and perforated at 5408'. POOH. TIH with tubing to 5462'. R/U cementers. Pumped plug #5 from 5462' to 5258'. R/D cementers. L/D 8 joints. Reverse circulated at 4581' with 30 bbls. TOOH. WOC 4 hours. Put 200 psi on casing. Pumped 6 bbls. TIH and tagged plug #5 at 5368'. R/U cementers. Attempted to pressure test casing but was unsuccessful. Continued pumping plug #5 from 5368' to 5258'. R/D cementers. L/D 5 joints. Reverse circulated at 4581'. TOOH. WOC overnight. TIH and tagged plug #5 at 5243'. Successfully pressure tested casing to 500 psi.

Plug #6: (Intermediate Casing Shoe, 2727'-2508', 64 Sacks Class C Cement)

R/U wireline services. TIH and perforated at 2668'. R/D wireline. TIH to 2727'. R/U cementing services. Pumped plug #6 from 2727' to 2518'. R/D cementers. L/D 7 joints. Reverse circulated at 2508'. TOOH. Put 500 psi on casing. WOC 4 hours. TIH and tagged at 2508'.

Plug #7: (Cherry Canyon Formation Top, 2,500'-2,275', 51 Sacks Class C Cement)

R/U cementing services. Pumped plug #7 from 2500 to approximately 2200'. TOOH. R/U wireline services. Tagged cement

bridge at 723'. Drilled out cement from 723' to 943'. TIH and tagged at 2275'.

Plug #8: (Delaware Sand Formation Top, 2,100'-1,896', 50 Sacks Class C Cement)

R/U wireline services. RIH and perforated at 2050'. POOH. R/D wireline services. TIH to 2100'. R/U cementing services. Pumped plug #8 from 2100' to approximately 1800'. TOOH to 683'. Well pressured up and blew out kill fluid and some cement. Pumped 15 bbls down backside, did not kill well. Pumped down tubing, did not kill well. Bleed pressure to pit. TIH and tag at 1896'.

Plug #9: (State Required Plug Across Salt Formation, 830'-720', 25 Sacks Class C Cement)

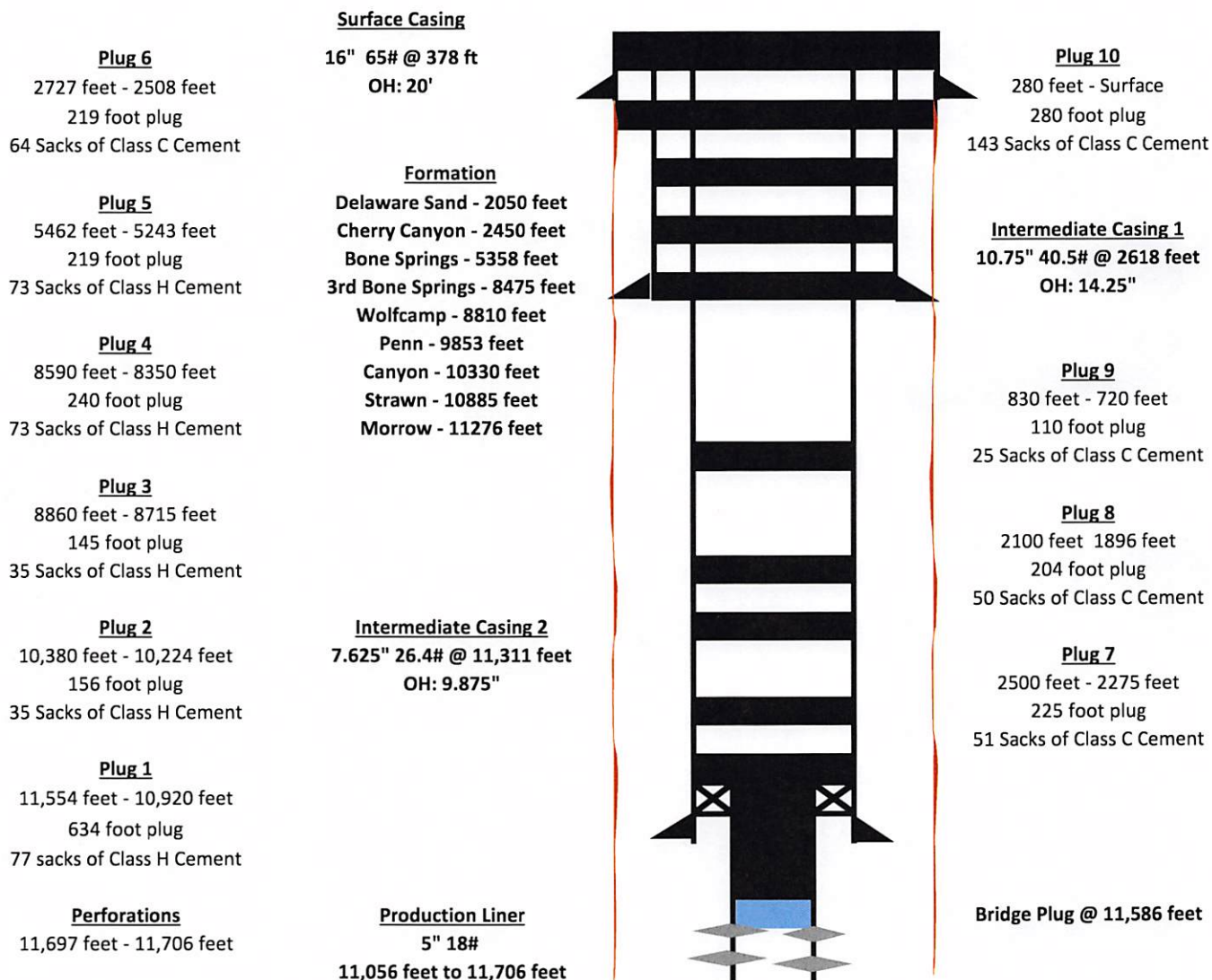
R/U wireline services. TIH and perforate at 780' and 750'. POOH. R/D wireline services. TIH to 830'. R/U cementing services. Pumped plug #9 from 830' to 700'. TOOH. WOC. TIH and tagged plug #9 at 720'.

Plug #10: (Surface, 280'-Surface', 143 Sacks Class C Cement (127 sx for top off))

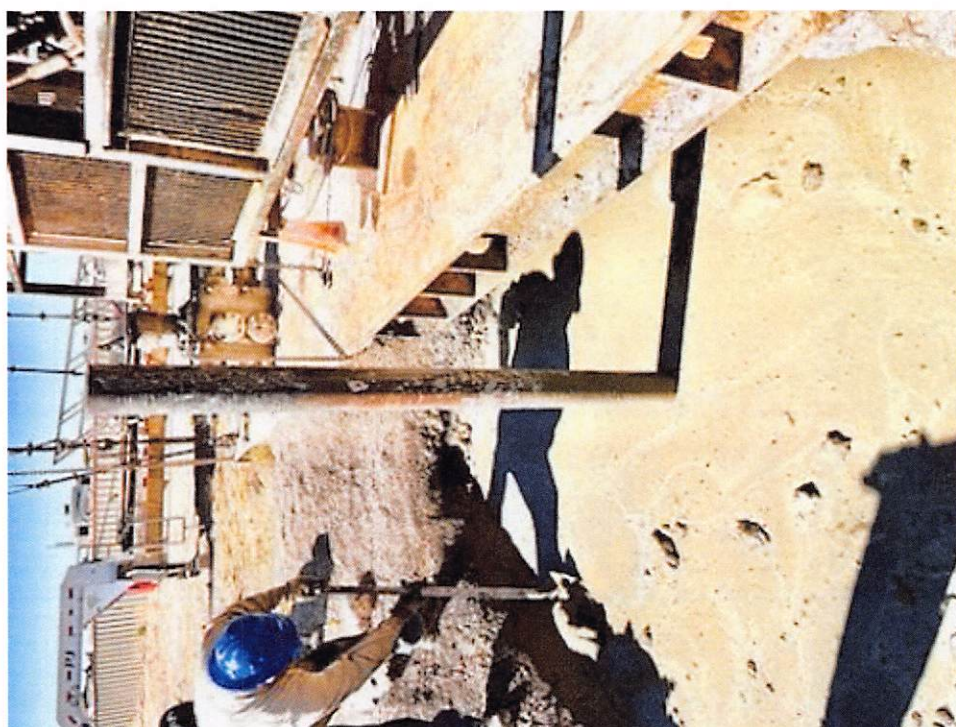
R/U wireline services. TIH and perforate at 780' and 750'. POOH. R/D wireline services. TIH to 830'. R/U cementing services. Pumped plug #9 from 830' to 700'. TOOH. WOC. TIH and tagged plug #9 at 720'. TOOH. R/U wireline services. RIH and perforated at 200' and 220'. Pumped plug #10 from WH into perforations until cement pressured up. Ran weighted tally tape down production casing and tagged cement at well head. P/U cement bit and bit sub. Drilled out 4'. L/D swivel. R/U NuWave wellhead cutter. NuWave unit broke down. Secured well for the day. N/D BOP. R/U NuWave and cut off wellhead. Ran weighted tally down 10" casing and tagged at 20'. Cement was at surface in other strings. Ran poly line down 10" casing. R/U cementing services. Topped off casing. Welded plated and installed P/A marker per NMOCD standards. Topped off cellar. R/D and prepare to MOL.

Completed Wellbore Diagram

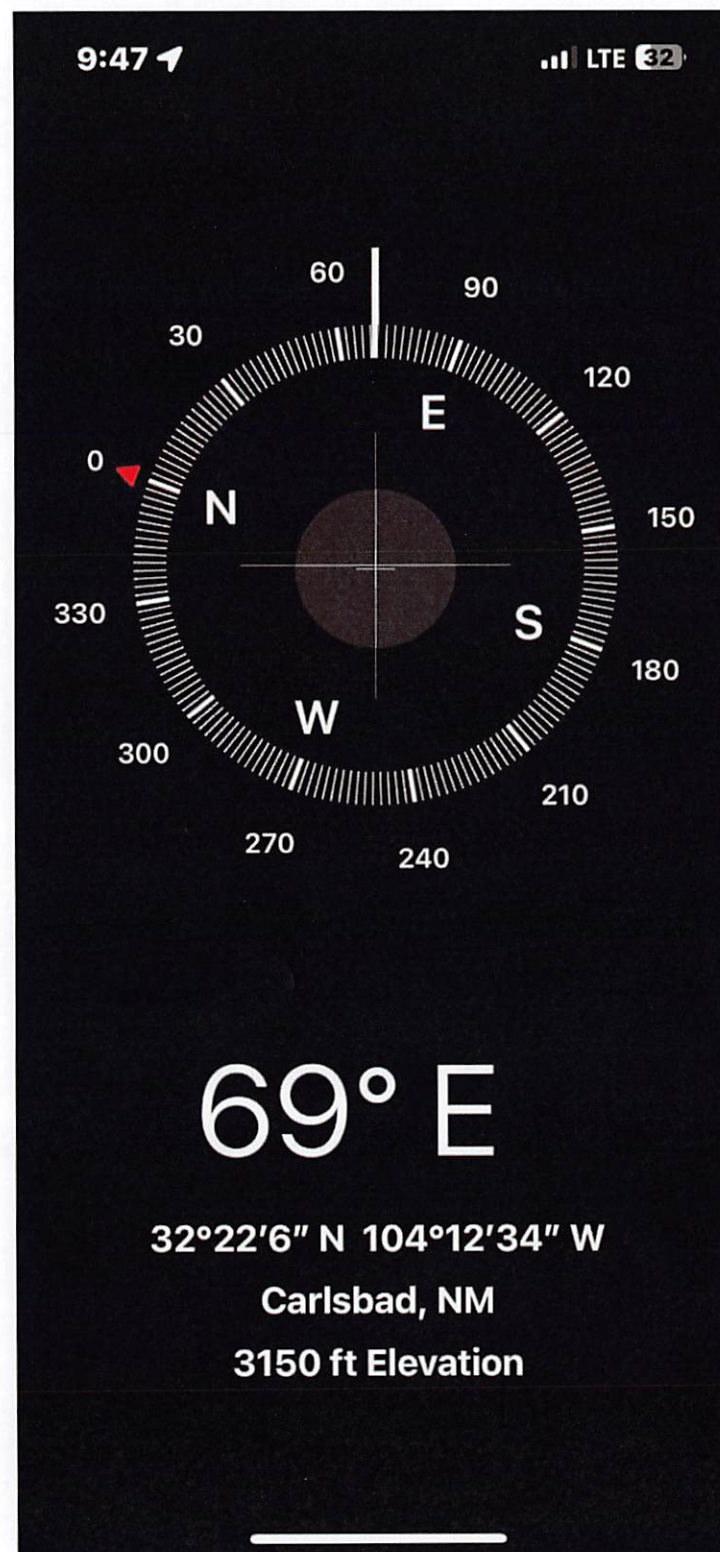
Energy Acuman LLC
BRC MADERA #001
API: 30-015-22372
Eddy County, New Mexico













District I
1625 N. French Dr., Hobbs, NM 88240
Phone:(575) 393-6161 Fax:(575) 393-0720
District II
811 S. First St., Artesia, NM 88210
Phone:(575) 748-1283 Fax:(575) 748-9720
District III
1000 Rio Brazos Rd., Aztec, NM 87410
Phone:(505) 334-6178 Fax:(505) 334-6170
District IV
1220 S. St Francis Dr., Santa Fe, NM 87505
Phone:(505) 476-3470 Fax:(505) 476-3462

State of New Mexico
Energy, Minerals and Natural Resources
Oil Conservation Division
1220 S. St Francis Dr.
Santa Fe, NM 87505

CONDITIONS

Action 278700

CONDITIONS

Operator: J.A. Drake Well Service Inc. 607 W Pinon Farmington, NM 87401	OGRID: 330485
	Action Number: 278700
	Action Type: [C-103] Sub. Plugging (C-103P)

CONDITIONS

Created By	Condition	Condition Date
jagarcia	None	10/25/2023