

Submit 1 Copy To Appropriate District Office  
 District I - (575) 393-6161  
 1625 N. French Dr., Hobbs, NM 88240  
 District II - (575) 748-1283  
 811 S. First St., Artesia, NM 88210  
 District III - (505) 334-6178  
 1000 Rio Brazos Rd., Aztec, NM 87410  
 District IV - (505) 476-3460  
 1220 S. St. Francis Dr., Santa Fe, NM 87505

State of New Mexico  
 Energy, Minerals and Natural Resources

OIL CONSERVATION DIVISION  
 1220 South St. Francis Dr.  
 Santa Fe, NM 87505

Form C-102 Page 1 of 4  
 Revised July 18, 2013

WELL API NO. 30-025-33758

5. Indicate Type of Lease

STATE ☐ FEE ☒

6. State Oil & Gas Lease No.

7. Lease Name or Unit Agreement Name

W A WEIR B

8. Well Number #005

9. OGRID Number 873

10. Pool name or Wildcat  
 MONUMENT ABO

SUNDRY NOTICES AND REPORTS ON WELLS

(DO NOT USE THIS FORM FOR PROPOSALS TO DRILL OR TO DEEPEN OR PLUG BACK TO A DIFFERENT RESERVOIR. USE "APPLICATION FOR PERMIT" (FORM C-101) FOR SUCH PROPOSALS.)

1. Type of Well: Oil Well ☒ Gas Well ☐ Other

2. Name of Operator

APACHE CORPORATION

3. Address of Operator

303 VETERANS AIRPARK LANE, STE. 3000, MIDLAND TX 79705

4. Well Location

Unit Letter C : 990 feet from the N line and 1650 feet from the W line

Section 26 Township 19S Range 36E NMPM County LEA

11. Elevation (Show whether DR, RKB, RT, GR, etc.)

12. Check Appropriate Box to Indicate Nature of Notice, Report or Other Data

NOTICE OF INTENTION TO:

PERFORM REMEDIAL WORK ☐ PLUG AND ABANDON ☐  
 TEMPORARILY ABANDON ☐ CHANGE PLANS ☐  
 PULL OR ALTER CASING ☐ MULTIPLE COMPL ☐  
 DOWNHOLE COMMINGLE ☐  
 CLOSED-LOOP SYSTEM ☐  
 OTHER: ☐

SUBSEQUENT REPORT OF:

REMEDIAL WORK ☐ ALTERING CASING ☐  
 COMMENCE DRILLING OPNS. ☐ P AND A ☒  
 CASING/CEMENT JOB ☐ PNR  
 OTHER: ☐

13. Describe proposed or completed operations. (Clearly state all pertinent details, and give pertinent dates, including estimated date of starting any proposed work).  
 SEE RULE 19.15.7.14 NMAC. For Multiple Completions: Attach wellbore diagram of proposed completion or recompletion.

8/3/23 - NOTIFIED NMOC. MIRU. SET 5 1/2" CIBP @ 7125'.

8/11/23 - NOTIFIED NMOC. MIRU.

8/14/23 - CIRCULATE MLF. SPOTTED 55 SX OF CLASS "C" CEMENT FROM 7121' - 6580'.

8/15/23 - TAGGED @ 6570'. SPOTTED 80 SX OF CLASS "C" CEMENT FROM 5940 - 5150'. PERF'D @ 4240'. ATTEMPTED TO EIR HELD 500PSI FOR 30 MIN. RECEIVED APPROVAL FROM NMOC TO SPOT 90 SX OF CLASS "C" CEMENT FROM 4290' - 3410'.

8/16/23 - TAGGED @ 3570'. PERF'D @ 2990'. RECEIVED APPROVAL FROM NMOC TO SPOT 25 SX OF CLASS "C" CEMENT FROM 3570' - 3327'. TAGGED @ 3334'. RECEIVED APPROVAL FROM MCOC TO SPOT 45 SX OF CLASS "C" CEMENT FROM 3042' - 2601'.

8/17/23 - TAGGED @ 2610'. PERF'D @ 1405'. SQUEEZED 60 SX OF CLASS "C" CEMENT FROM 1405' - 1254'. TAGGED @ 1200'. PERF'D @ 1195'.

8/18/23 - RECEIVED APPROVAL FROM MCOC TO SQUEEZE 326 SX OF CLASS "C" CEMENT FROM 1195' - 950'.

8/21/23 - TAGGED @ 847'. PER APACHE REP PERF'D @ 600'. RECEIVED APPROVAL FROM NMOC TO SPOT 35 SXS OF CLASS "C" CEMENT FROM 847' - 503'.

8/22/23 - PER APACHE REP SET 5 1/2" CIBP @ 478'. RECEIVED APPROVAL FROM NMOC TO SPOT 66 SX CLASS "C" CEMENT FROM 478' - SURFACE. VERIFIED CEMENT AT THE SURFACE.

CUT OFF WELL HEAD INSTALL POST. TURN OVER TO RECLAMATION.

Spud Date:

Rig Release Date:

I hereby certify that the information above is true and complete to the best of my knowledge and belief.

SIGNATURE



TITLE: P&A Engineer

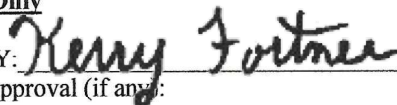
DATE 9/6/2023

Type or print name: Kelton Woodard

E-mail address: kelton@jmrsservices.com PHONE: (432)618-1050

For State Use Only

APPROVED BY:



TITLE Compliance Officer A

DATE 10/27/23

Conditions of Approval (if any):

Authorized by Carrie Kirkland - Apache P&A Tech 09-11-2023



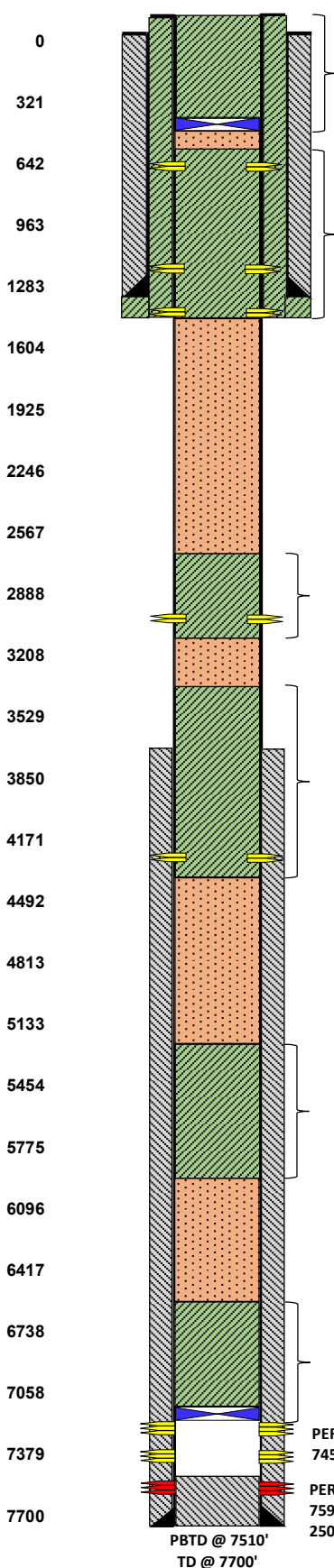
LEASE NAME	W.A. WEIR "B"
WELL #	#005
API #	30-025-33758
COUNTY	LEA, NM

## FINAL PA WB DIAGRAM

11" HOLE  
8 5/8" 24# @ 1294'  
W/ 400 SX CIRC TO SURF

TOC @ 3662' (CBL 97')

7 7/8" HOLE  
5 1/2" 15.5# @ 7700'  
W/ 1300 SX, TOC @ 3662'  
(CBL - 97')



## PLUG #6

8/22/2023 REC'D APP FROM OCD & SET CIBP @ 478' & SPOTTED 66 SX CMT FROM 478'-SURF. RDMO, CUT WH, INSTALL DRY HOLE MARKER, CLEAN LOCATION, P&A COMPLETE 8/22/2023

## WATER BOARD &amp; SURF PLUG

## PLUG #5

8/17/2023 PUH & PERF'D @ 1405' & SQZ'D 60 SX CLASS "C" CMT FROM 1405'-1254', TAGGED TOC @ 1200'.  
8/18/2023 REC'D APP FROM OCD & PERF'D @ 1195' & SQZ'D 326 SX CMT DWN 8 5/8" & UP TBG FROM 1195'-950'.  
8/21/2023 TAGGED TOC @ 847'. REC'D APP FROM OCD & PERF'D @ 600' & SPOTTED 35 SX CMT FROM 847'-503' & APPLIED 800 PSI TO 5 1/2" CSG W/ 8 5/8" OPEN.

## TOP OF SALT, SURF SHOE

## PLUG #4

8/16/2023 PUH & PERF'D @ 2990', REC'D APP FROM OCD & SPOTTED 45 SX CLASS "C" CMT FROM 3042'-2601', TAGGED TOC @ 2610'.

## 7RVRS, YATES, &amp; BASE OF SALT

## PLUG #3

8/15/2023 PUH & PERF'D @ 4240', UNABLE TO EIR, REC'D APP FROM OCD & SPOTTED 90 SX CLASS "C" CMT FROM 4290'-3410', TAGGED TOC @ 3570'.  
REC' APP FROM OCD & SPOTTED 25 SX CLASS "C" CMT FROM 3570'-3327', TAGGED TOC @ 3334'.

## SAN ANDRES, GRAYBURG, &amp; QUEEN

## PLUG #2

8/15/2023 PUH & SPOTTED 80 SX CLASS "C" CMT FROM 5940'-5150'.

## BLINEBRY, PADDOCK, &amp; GLORIETA

## PLUG #1

8/14/2023 MIRU PA RIG. RETRIEVE RBP @ 312', RIH W/ TBG, CIRC'D W/ MLF & SPOTTED 55 SX CLASS "C" CMT FROM 7125'-6610', TAGGED TOC @ 6570'

## ABO, DRINKARD, &amp; TUBB

8/3/2023 MIRU PREP RIG, POOH & LD ALL PROD EQUIPMENT, SET CIBP @ 7125' W/ NO CMT, SET RBP @ 312' RDMO.

**District I**  
1625 N. French Dr., Hobbs, NM 88240  
Phone:(575) 393-6161 Fax:(575) 393-0720  
**District II**  
811 S. First St., Artesia, NM 88210  
Phone:(575) 748-1283 Fax:(575) 748-9720  
**District III**  
1000 Rio Brazos Rd., Aztec, NM 87410  
Phone:(505) 334-6178 Fax:(505) 334-6170  
**District IV**  
1220 S. St Francis Dr., Santa Fe, NM 87505  
Phone:(505) 476-3470 Fax:(505) 476-3462

State of New Mexico  
Energy, Minerals and Natural Resources  
Oil Conservation Division  
1220 S. St Francis Dr.  
Santa Fe, NM 87505

COMMENTS

Action 263859

COMMENTS

Operator: APACHE CORPORATION 303 Veterans Airpark Ln Midland, TX 79705	OGRID: 873
	Action Number: 263859
	Action Type: [C-103] Sub. Plugging (C-103P)

COMMENTS

Created By	Comment	Comment Date
plmartinez	DATA ENTRY PM.	10/31/2023

**District I**  
1625 N. French Dr., Hobbs, NM 88240  
Phone:(575) 393-6161 Fax:(575) 393-0720

**District II**  
811 S. First St., Artesia, NM 88210  
Phone:(575) 748-1283 Fax:(575) 748-9720

**District III**  
1000 Rio Brazos Rd., Aztec, NM 87410  
Phone:(505) 334-6178 Fax:(505) 334-6170

**District IV**  
1220 S. St Francis Dr., Santa Fe, NM 87505  
Phone:(505) 476-3470 Fax:(505) 476-3462

State of New Mexico  
Energy, Minerals and Natural Resources  
Oil Conservation Division  
1220 S. St Francis Dr.  
Santa Fe, NM 87505

CONDITIONS

Action 263859

CONDITIONS

Operator: APACHE CORPORATION 303 Veterans Airpark Ln Midland, TX 79705	OGRID: 873
	Action Number: 263859
	Action Type: [C-103] Sub. Plugging (C-103P)

CONDITIONS

Created By	Condition	Condition Date
kfortner	Need C103Q and marker photo to release	10/27/2023