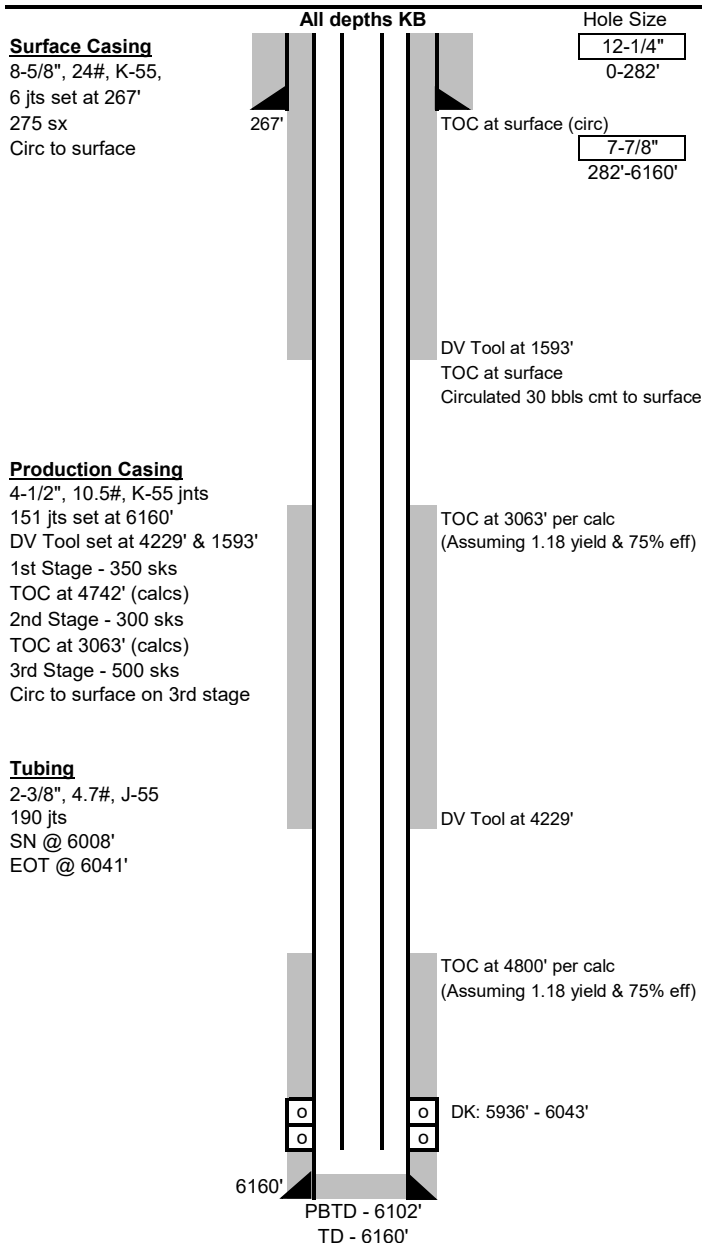




Well Name: Julander Federal 1E  
 Location: UL K, Sec 31, T29N, R11W & 1525' FSL & 1840' FWL  
 County: San Juan  
 API #: 30-045-25000  
 Co-ordinates: Lat 36.6797485° Long -108.0354767° NAD83  
 Elevations: GROUND: 5441'  
 KB: 5452'  
 Depths (KB): PBD: 6102'  
 TD: 6160'

Date Prepared: 11/16/2023 Peace  
 Reviewed By: 11/20/2023 CR  
 Spud Date: 10/6/1981  
 Completion Date: 10/25/1981  
 Last Workover Date: N/A

**Surface Casing: (10/6/1981)**

Drilled 12-1/4" surface hole to 282'. Ran 6 jnts 8-5/8", 24# csg set at 267'.  
 Cemented w/ 275 sks Class B w/ 3% CaCl. Circulated to surface.

**Production Casing: (10/23/1981)**

Drilled 7-7/8" prod hole to 6160'. Ran 151 jts 4-1/2", 10.5#, K-55 csg set at 6160'.

DV Tool set at 4229' & 1593'

**1st Stage** - 250 sks 50/50 POZ mix w/ 2% gel & 10% salt & 100 sks class B w/ 2% CaCl.

**2nd Stage** - 250 sks 50/50 POZ mix w/ 8% gel & 10# gilsonite/sk

& 50 sks Class B w/ 2% CaCl.

**3rd Stage** - 300 sks 65/35/12 w/ 12.5# gilsonite/sk & 200 sks of Class B w/ 2%

CaCl. Circulated 30 bbls of cmt to surface on 3rd stage.

TOC at 4800' & 3063' assuming 1.18 yield & 75% efficiency

**Tubing: (11/16/1981)**

length (ft)

KB	length (ft)
(189) 2-3/8", 4.7#, J-55 tubing joints	5997
1.78" seat nipple	1
(1) 2-3/8", 4.7#, J-55 tubing joint	32
Open Ended	

Set at: 6041

**Artificial Lift**

NA

**Perforations: (10/25/1981)**

**Dakota: (5936'-6043')**. 5936', 38', 42', 44', 60', 64', 66', 6014', 16', 18', 20', 23', 25', 27', 29', 31', 33', 35', 37', 41', 43'. Perf'd 21 holes, 0.42".  
 Frac w/ 300 gal 10% acetic acid, 2000 gal 7.5% NE HCL, and 10,000# of 20/40 sand.

**Formations:**

Ojo Alamo-	285'	Menefee-	3124'
Kirtland	385'	Point Lookout-	3838'
Fruitland Coal-	1056'	Mancos-	4183'
Pictured Cliffs-	1464'	Gallup-	5071'
Chacra-	2416'	Dakota-	5928'
Cliff House-	3021'		

**Additional Notes:**

10/1981- Drilled and completed as a Dakota.

**District I**  
1625 N. French Dr., Hobbs, NM 88240  
Phone:(575) 393-6161 Fax:(575) 393-0720  
**District II**  
811 S. First St., Artesia, NM 88210  
Phone:(575) 748-1283 Fax:(575) 748-9720  
**District III**  
1000 Rio Brazos Rd., Aztec, NM 87410  
Phone:(505) 334-6178 Fax:(505) 334-6170  
**District IV**  
1220 S. St Francis Dr., Santa Fe, NM 87505  
Phone:(505) 476-3470 Fax:(505) 476-3462

State of New Mexico  
Energy, Minerals and Natural Resources  
Oil Conservation Division  
1220 S. St Francis Dr.  
Santa Fe, NM 87505

CONDITIONS

Action 290731

CONDITIONS

Operator: LOGOS OPERATING, LLC 2010 Afton Place Farmington, NM 87401	OGRID: 289408
	Action Number: 290731
	Action Type: [UF-WBS] Wellbore Schematic (WELLBORE SCHEMATICS)

CONDITIONS

Created By	Condition	Condition Date
mkuehling	None	12/6/2023