



Test Report

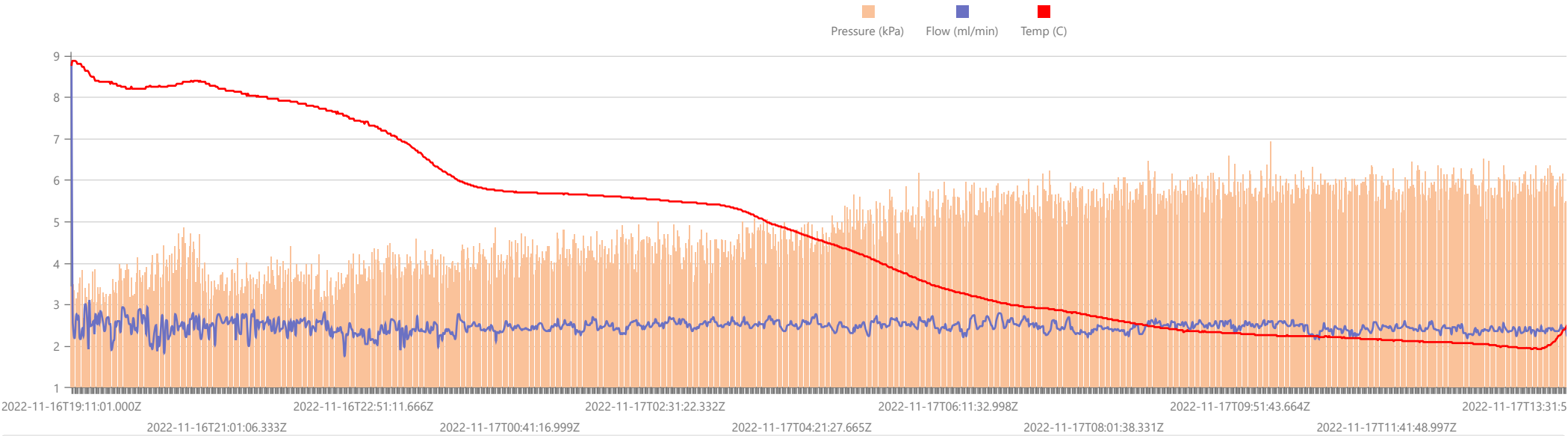
Start Date: Wed Nov 16 2022 19:11:01 GMT+0000 (Coordinated Universal Time) End Date: Thu Nov 17 2022 17:23:12 GMT+0000 (Coordinated Universal Time) Device: VB100-0016 Well Licensee: NMOCD Well Name: Double L Queen #03Q UWI: 30-005-20338 Well License Number: 30-005-20338 Surface Location: Chaves County - Bogle Bottom Hole Location: unknown	Test Operator: Francis Vernwald Authorized By: NMOCD Test Reason: IJJA Pre Plug Scope Of Work: 12-hr AFE Number: NMOCD0038AA / APWS22.001 GPS: 33.05145,-103.96566 Notes: GTG - Monitoring casing flow Prepared By: Curtis Shuck, QMS
--	--

Flow / Pressure Test

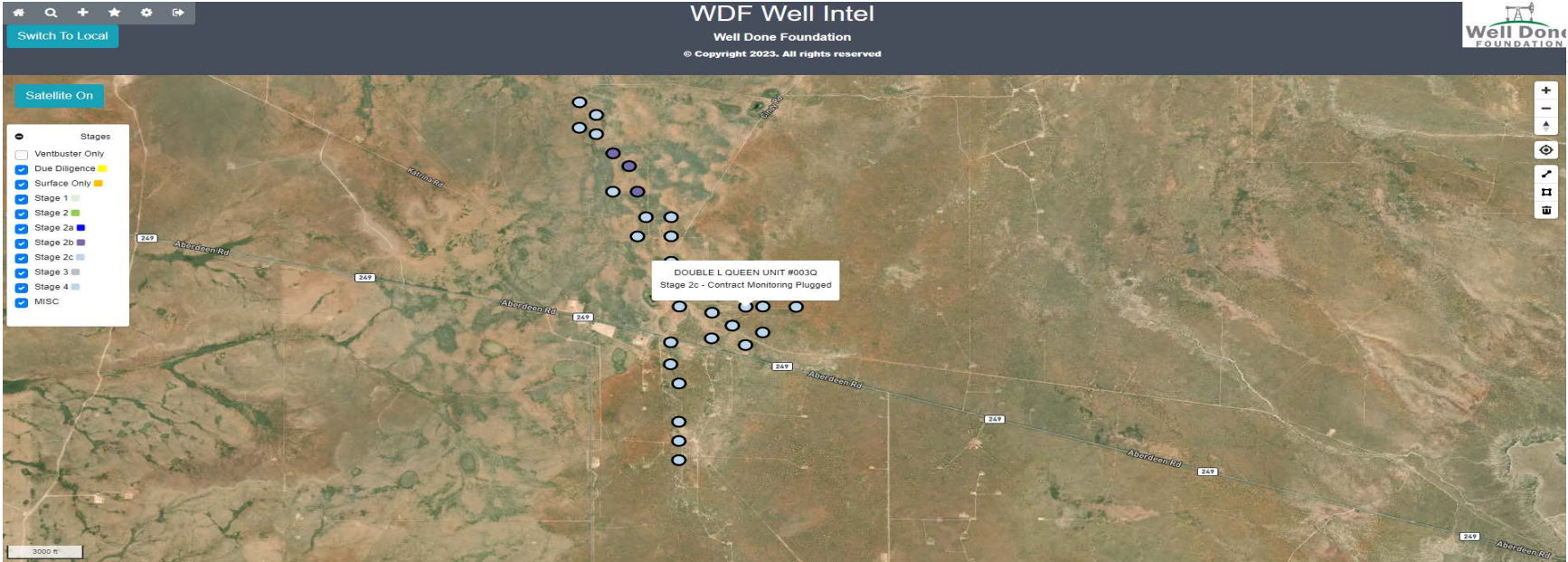
Flow Duration 22 hrs 11 minutes Duration	Average Flowrate 2.4421 m3/d	Average Pressure 3.6277 kPag	Average Flow Temperature 4.9083 °C	Average CH4 Mass 16.25 g/hr
--	------------------------------------	------------------------------------	--	--------------------------------

Methane Calculation: 717 grams CH4 per cubic meter (717 g/m³ x 2.4421 m³/day = 1750.99 g/day total /24 = 72.96 g/hour x 0.22277 (methane concentration) = **16.25 g/hour CH4**). **Methane, gas** weighs 0.000717 *gram per cubic centimeter* or 0.717 *kilgram per cubic meter*, i.e. density of *methane, gas* is equal to 0.717 kg/m³; at 0°C (32°F or 273.15K) at standard atmospheric pressure. In imperial or US customary measurement system, the density is equal to 0.0448 *pound per cubic foot* [lb/ft³], or 0.0004144 *ounce per cubic inch* [oz/inch³].

Flow / Pressure / Temperature Timeseries



#	Date	Note
1	2022-11-17	WDF Measure 1 returns 22.2 hours after VB100-016 was started. Collect gas sample 2. Rig down VB100-016 and secure location. WILDCAT OUT!
2	2022-11-16	WDF Measure 1 on location of the DLQ #03Q to rig up VB100-016 for a 12.0 hour Methane Flow Test. Perform field gas analysis and collect gas sample 1 for lab analysis. Rig up VB100-016 and begin testing.
3	2022-07-27	ces: Arrived at location. Good access in from Cindi Road. Gas well. Fiberglass two and three eights inch tubing at the surface. Flow lines nearby.
4	2022-07-27	ces: 63 pieces of two and three eights inch fiberglass threaded tubing surface stain around well had approximately 15' x 15'.





www.permianls.com
575.397.3713 2609 W Marland Hobbs NM 88240

C6+ Gas Analysis Report

15334G	Double L Queen #03Q Pre Plug	Double L Queen #03Q	
Sample Point Code	Sample Point Name	Sample Point Location	
Laboratory Services	2022060358	Tedlar Bag	FV - Spot
Source Laboratory	Lab File No	Container Identity	Sampler
USA	USA	USA	New Mexico
District	Area Name	Field Name	Facility Name
Nov 16, 2022 13:40	Nov 16, 2022 13:40	Nov 17, 2022 15:40	Nov 18, 2022
Date Sampled	Date Effective	Date Received	Date Reported
	Luis		
Ambient Temp (°F)	Flow Rate (Mcf)	Analyst	Press PSI @ Temp °F Source Conditions
Well Done Foundation		NG	
Operator		Lab Source Description	

Component	Normalized Mol %	Un-Normalized Mol %	GPM
H2S (H2S)	0.0000	0	
Nitrogen (N2)	57.7640	57.76348	
CO2 (CO2)	0.0000	0	
Methane (C1)	22.2770	22.27678	
Ethane (C2)	6.5290	6.52897	1.7460
Propane (C3)	6.0930	6.09337	1.6780
I-Butane (IC4)	0.8280	0.82763	0.2710
N-Butane (NC4)	3.3070	3.30748	1.0420
I-Pentane (IC5)	1.2730	1.2729	0.4650
N-Pentane (NC5)	1.9290	1.92941	0.6990
Hexanes Plus (C6+)	0.0000	0	0.0000
TOTAL	100.0000	100.0000	5.9010

Method(s): Gas C6+ - GPA 2261, Extended Gas - GPA 2286, Calculations - GPA 2172

Analyzer Information			
Device Type:	Gas Chromatograph	Device Make:	Shimadzu
Device Model:	GC-2014	Last Cal Date:	Sep 26, 2022

Source	Date	Notes
Luis Cano	Nov 18, 2022 4:12 pm	Methane: 222,770PPM

Gross Heating Values (Real, BTU/ft³)			
14.696 PSI @ 60.00 Å°F		14.73 PSI @ 60.00 Å°F	
Dry	Saturated	Dry	Saturated
759.6	747.5	761.4	749.2

Calculated Total Sample Properties	
GPA2145-16 *Calculated at Contract Conditions	
Relative Density Real	Relative Density Ideal
1.0074	1.0055
Molecular Weight	
29.1190	

C6+ Group Properties		
Assumed Composition		
C6 - 60.000%	C7 - 30.000%	C8 - 10.000%

PROTREND STATUS:
Passed By Validator on Nov 18, 2022
DATA SOURCE:
Imported
PASSED BY VALIDATOR REASON:
Close enough to be considered reasonable.
VALIDATOR:
Luis Cano
VALIDATOR COMMENTS:
OK

November 16, 2022

	Atmospheric conditions and temperature °F	RealFeel °F	Atmospheric pressure inHg	Wind speed mph	Humidity
Night	+36°	+30°	30.4	SE 6.5	55%
Morning	+30°	+27°	30.4	SE 4.5	69%
Day	+45°	+43°	30.4	SE 4.9	33%
Evening	+39°	+34°	30.4	SW 9.8	56%

November 17, 2022

	Atmospheric conditions and temperature °F	RealFeel °F	Atmospheric pressure inHg	Wind speed mph	Humidity
Night	+30°	+23°	30.4	SW 6.9	69%
Morning	+21°	+12°	30.4	S 8.3	86%
Day	+54°	+50°	30.2	S 6	26%
Evening	+39°	+34°	30.2	S 8.7	41%



www.permianls.com
575.397.3713 2609 W Marland Hobbs NM 88240

C6+ Gas Analysis Report

15334G	Double L Queen #03Q Pre Plug		Double L Queen #03Q
Sample Point Code	Sample Point Name		Sample Point Location
Laboratory Services	2022060358	Tedlar Bag	FV - Spot
Source Laboratory	Lab File No	Container Identity	Sampler
USA	USA	USA	New Mexico
District	Area Name	Field Name	Facility Name
Nov 16, 2022 13:40	Nov 16, 2022 13:40	Nov 17, 2022 15:40	Nov 18, 2022
Date Sampled	Date Effective	Date Received	Date Reported
Luis			
Ambient Temp (°F)	Flow Rate (Mcf)	Analyst	Press PSI @ Temp °F Source Conditions
Well Done Foundation		NG	
Operator		Lab Source Description	

Component	Normalized Mol %	Un-Normalized Mol %	GPM
H2S (H2S)	0.0000	0	
Nitrogen (N2)	57.7640	57.76348	
CO2 (CO2)	0.0000	0	
Methane (C1)	22.2770	22.27678	
Ethane (C2)	6.5290	6.52897	1.7460
Propane (C3)	6.0930	6.09337	1.6780
I-Butane (IC4)	0.8280	0.82763	0.2710
N-Butane (NC4)	3.3070	3.30748	1.0420
I-Pentane (IC5)	1.2730	1.2729	0.4650
N-Pentane (NC5)	1.9290	1.92941	0.6990
Hexanes Plus (C6+)	0.0000	0	0.0000
TOTAL	100.0000	100.0000	5.9010

Method(s): Gas C6+ - GPA 2261, Extended Gas - GPA 2286, Calculations - GPA 2172

Gross Heating Values (Real, BTU/ft³)			
14.696 PSI @ 60.00 Å°F	14.73 PSI @ 60.00 Å°F		
Dry	Saturated	Dry	Saturated
759.6	747.5	761.4	749.2

Calculated Total Sample Properties	
GPA2145-16 *Calculated at Contract Conditions	
Relative Density Real	Relative Density Ideal
1.0074	1.0055
Molecular Weight	
29.1190	

C6+ Group Properties		
Assumed Composition		
C6 - 60.000%	C7 - 30.000%	C8 - 10.000%

PROTREND STATUS: Passed By Validator on Nov 18, 2022
DATA SOURCE: Imported

PASSED BY VALIDATOR REASON: Close enough to be considered reasonable.

VALIDATOR: Luis Cano

VALIDATOR COMMENTS: OK

Analyzer Information			
Device Type:	Gas Chromatograph	Device Make:	Shimadzu
Device Model:	GC-2014	Last Cal Date:	Sep 26, 2022

Source	Date	Notes
Luis Cano	Nov 18, 2022 4:12 pm	Methane: 222,770PPM

District I
1625 N. French Dr., Hobbs, NM 88240
Phone:(575) 393-6161 Fax:(575) 393-0720
District II
811 S. First St., Artesia, NM 88210
Phone:(575) 748-1283 Fax:(575) 748-9720
District III
1000 Rio Brazos Rd., Aztec, NM 87410
Phone:(505) 334-6178 Fax:(505) 334-6170
District IV
1220 S. St Francis Dr., Santa Fe, NM 87505
Phone:(505) 476-3470 Fax:(505) 476-3462

State of New Mexico
Energy, Minerals and Natural Resources
Oil Conservation Division
1220 S. St Francis Dr.
Santa Fe, NM 87505

DEFINITIONS

Action 300528

DEFINITIONS

Operator: CANYON E & P COMPANY 251 O'Connor Ridge Blvd. Irving, TX 75038	OGRID: 269864
	Action Number: 300528
	Action Type: [UF-OMA] Pre-Plug Methane Monitoring (UF-OMA-MMA)

DEFINITIONS

The Orphan Well Mitigation Activity (OMA) forms are a subset of the OCD's forms exclusively designed for activities related to State of New Mexico's contracted plugging and reclamation activities. Specifically, these forms are used for orphan wells or associated facilities which are in a "Reclamation Fund Approved" status. This status represents wells or facilities where the OCD has acquired a hearing order allowing the OCD to perform plugging or reclamation on wells and associated facilities that no longer have a viable operator to perform the necessary work. These forms are not to be utilized for any other purpose.

District I

1625 N. French Dr., Hobbs, NM 88240
Phone:(575) 393-6161 Fax:(575) 393-0720

District II

811 S. First St., Artesia, NM 88210
Phone:(575) 748-1283 Fax:(575) 748-9720

District III

1000 Rio Brazos Rd., Aztec, NM 87410
Phone:(505) 334-6178 Fax:(505) 334-6170

District IV

1220 S. St Francis Dr., Santa Fe, NM 87505
Phone:(505) 476-3470 Fax:(505) 476-3462

State of New Mexico
Energy, Minerals and Natural Resources
Oil Conservation Division
1220 S. St Francis Dr.
Santa Fe, NM 87505

QUESTIONS

Action 300528

QUESTIONS

Operator: CANYON E & P COMPANY 251 O'Connor Ridge Blvd. Irving, TX 75038	OGRID: 269864
	Action Number: 300528
	Action Type: [UF-OMA] Pre-Plug Methane Monitoring (UF-OMA-MMA)

QUESTIONS

Prerequisites	
[OGRID] Well Operator	[269864] CANYON E & P COMPANY
[API] Well Name and Number	[30-005-20338] DOUBLE L QUEEN UNIT #003Q
Well Status	Reclamation Fund Approved

Monitoring Event Information*Please answer all the questions in this group.*

Reason For Filing	Pre-Plug Methane Monitoring
Date of monitoring	11/16/2022
Latitude	33.05145
Longitude	-103.96566

Monitoring Event Details*Please answer all the questions in this group.*

Flow rate in cubic meters per day (m³/day)	2.40
Test duration in hours (hr)	22.1
Average flow temperature in degrees Celsius (°C)	4.9
Average gauge flow pressure in kilopascals (kPag)	3.6
Methane concentration in part per million (ppm)	222,770
Methane emission rate in grams per hour (g/hr)	16.25
Testing Method	Steady State

Monitoring Contractor*Please answer all the questions in this group.*

Name of monitoring contractor	Well Done New Mexico LLC
-------------------------------	--------------------------