



333 Main Street Shelby, Montana 59474 / P.O. Box 10640 Bozeman, MT 59179

(406) 460-0903

TO: Jim Griswold, OCD

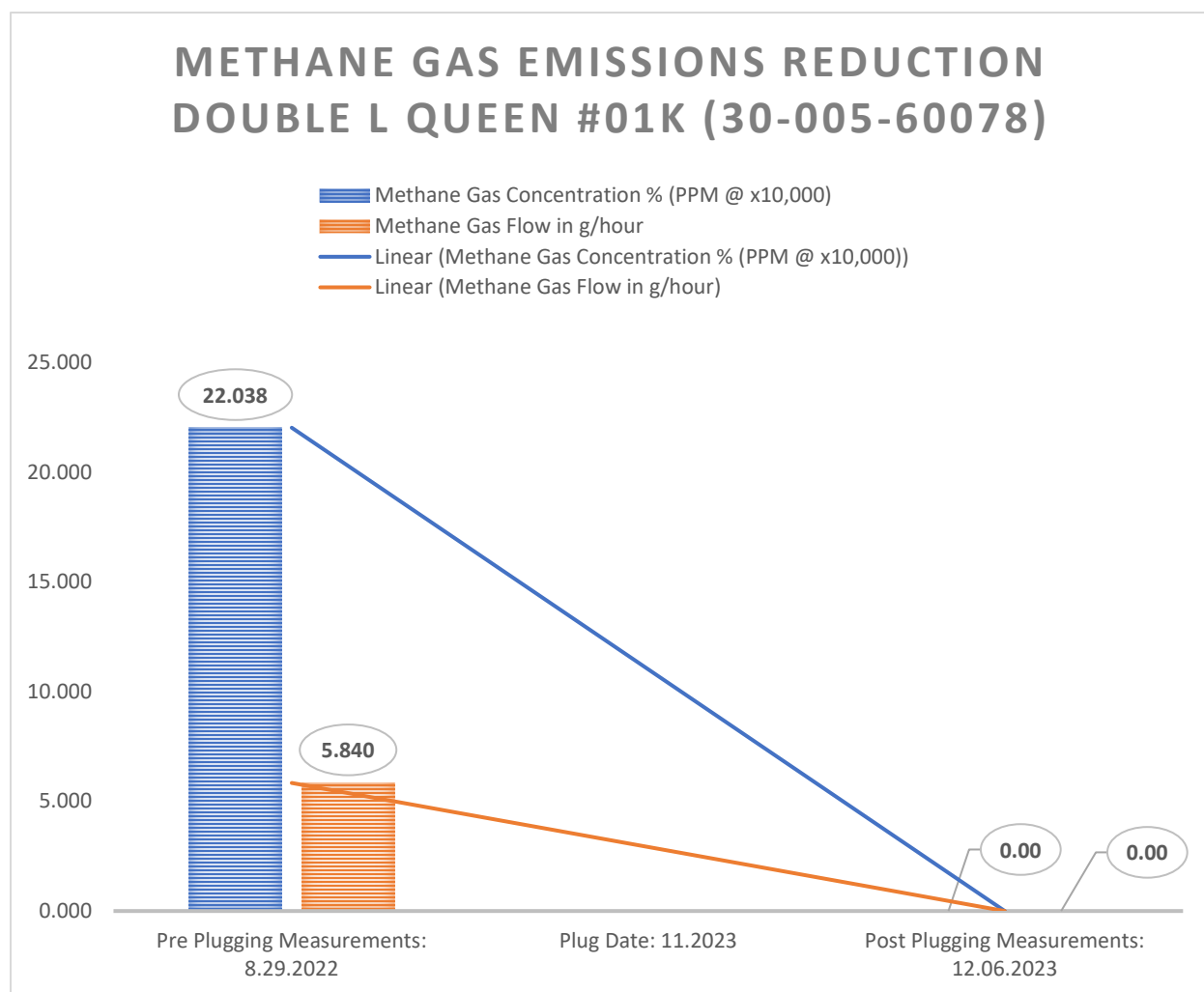
FROM: Curtis Shuck, WDNM

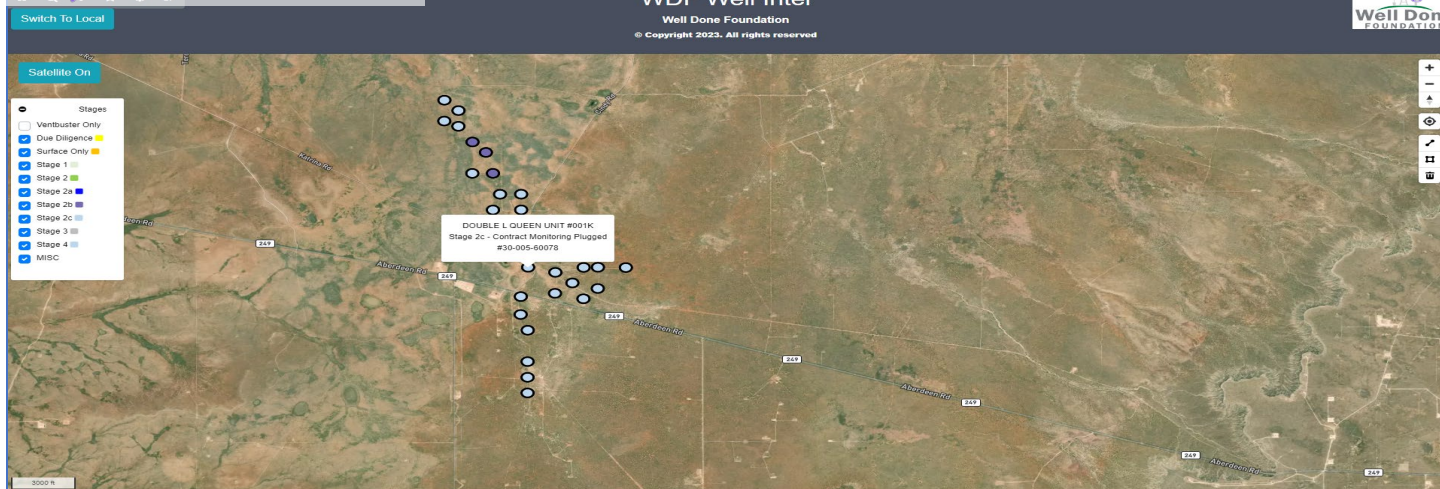
DATE: December 31, 2023

RE: Double L Queen #01K (30-005-60078) Post Plugging Methane Emission Reduction Report

MEMORANDUM

Well Done New Mexico LLC performed Post Plugging Orphan Well Methane Emission Testing, Gas Sampling & Analysis on the Double L Queen #01K (30-005-60078) on December 6, 2023. The following are the conclusions:



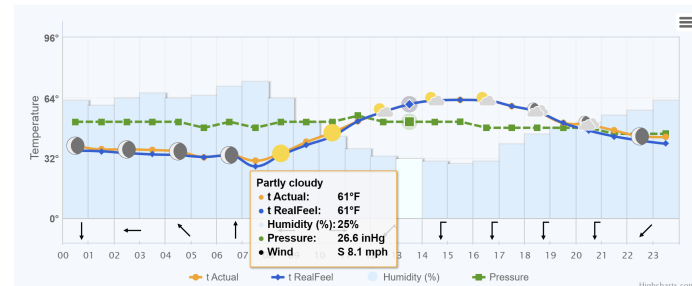


LABORATORY SERVICES www.pertains.com 575.397.3710 2020 W. Hubbard - Hobbs NM 88240		C6+ Gas Analysis Report	
19575G	DOUBLE L QUEEN 001K POST PLUG	DOUBLE L QUEEN 001K POST PLUG	
Sample Point Code	Sample Point Name	Sample Point Location	
Laboratory Services	2023081398	BAG	CES - Spot
Source Laboratory	Lab File No	Container Identity	Sampler
USA	USA	USA	New Mexico
District	Area Name	Field Name	Facility Name
Dec 6, 2023 13:35	Dec 1, 2023	Dec 18, 2023 11:55	Dec 20, 2023
Date Sampled	Date Effective	Date Received	Date Reported
System Administrator		Press PSI @ Temp °F	
Ambient Temp (°F)		Flow Rate (Mcf)	
Analyst		Source Conditions	
Well Done Foundation		NG	
Operator		Lab Source Description	
Component	Normalized Mol %	Un-Normalized Mol %	GPM
H2S (H2S)	0.0000	0	
Nitrogen (N2)	99.7960	99.795	
CO2 (CO2)	0.0360	0.036	
Methane (C1)	0.0000	0	
Ethane (C2)	0.0000	0	0.0000
Propane (C3)	0.0000	0	0.0000
I-Butane (IC4)	0.0000	0	0.0000
N-Butane (NC4)	0.0000	0	0.0000
I-Pentane (IC5)	0.0000	0	0.0000
N-Pentane (NC5)	0.0000	0	0.0000
Hexanes Plus (C6+)	0.1680	0.168	0.0730
TOTAL	100.0000	99.9990	0.0730
Method(s): Gas C6+ - GPA 2261, Extended Gas - GPA 2286, Calculations - GPA 2172			
Analyzer Information			
Device Type:	Gas Chromatograph	Device Make:	Shimadzu
Device Model:	GC-2014	Last Cal Date:	Dec 18, 2023
Gross Heating Values (Real, BTU/R ³)			
14.696 PSI @ 60.00 A°F 14.73 PSI @ 60.00 A°F			
Dry Saturated Dry Saturated			
8.6 9.3 8.6 9.3			
Calculated Total Sample Properties			
GPA2145-16 °C Calculated at Contract Conditions			
Relative Density Real Relative Density Ideal			
0.9710 0.9711			
Molecular Weight			
28.1287			
C6+ Group Properties			
Assumed Composition			
C6 - 60.000% C7 - 30.000% C8 - 10.000%			
Field H2S			
0 PPM			
PROTREND STATUS:			
Passed By Validator on Dec 20, 2023			
DATA SOURCE:			
Imported			
PASSED BY VALIDATOR REASON:			
First sample taken @ this point, composition looks reasonable			
VALIDATOR:			
Dustin Armstrong			
VALIDATOR COMMENTS:			
OK			
Source	Date	Notes	
Dustin Armstrong	Dec 20, 2023	4:18 pm Methane = 0 ppm	

December 06, 2023

	Atmospheric conditions and temperature °F	Real/Feel °F	Atmospheric pressure inHg	Wind speed mph	Humidity
Night	+36°	+36°	26.6	↙ SW 2.7	47%
Morning	+30°	+27°	26.5	↗ NW 3.8	57%
Day	+61°	+61°	26.6	↗ S 8.1	25%
Evening	+50°	+50°	26.5	↗ S 4.3	38%

Hourly forecast for 06.12.2023





19575G	DOUBLE L QUEEN 001K POST PLUG	DOUBLE L QUEEN 001K POST PLUG
Sample Point Code	Sample Point Name	Sample Point Location
Laboratory Services	2023081398	BAG
Source Laboratory	Lab File No	Container Identity
USA	USA	USA
District	Area Name	Field Name
Dec 6, 2023 13:35	Dec 1, 2023	Dec 18, 2023 11:55
Date Sampled	Date Effective	Date Received
System Administrator		
Ambient Temp (°F)	Flow Rate (Mcf)	Analyst
		Press PSI @ Temp °F Source Conditions
Well Done Foundation		NG
Operator		Lab Source Description

Component	Normalized Mol %	Un-Normalized Mol %	GPM
H2S (H2S)	0.0000	0	
Nitrogen (N2)	99.7960	99.795	
CO2 (CO2)	0.0360	0.036	
Methane (C1)	0.0000	0	
Ethane (C2)	0.0000	0	0.0000
Propane (C3)	0.0000	0	0.0000
I-Butane (IC4)	0.0000	0	0.0000
N-Butane (NC4)	0.0000	0	0.0000
I-Pentane (IC5)	0.0000	0	0.0000
N-Pentane (NC5)	0.0000	0	0.0000
Hexanes Plus (C6+)	0.1680	0.168	0.0730
TOTAL	100.0000	99.9990	0.0730

Method(s): Gas C6+ - GPA 2261, Extended Gas - GPA 2286, Calculations - GPA 2172

Analyzer Information			
Device Type:	Gas Chromatograph	Device Make:	Shimadzu
Device Model:	GC-2014	Last Cal Date:	Dec 18, 2023

Gross Heating Values (Real, BTU/ft³)			
14.696 PSI @ 60.00 Å°F	14.73 PSI @ 60.00 Å°F		
Dry	Saturated	Dry	Saturated
8.6	9.3	8.6	9.3

Calculated Total Sample Properties	
GPA2145-16 *Calculated at Contract Conditions	
Relative Density Real	Relative Density Ideal
0.9710	0.9711
Molecular Weight	
28.1287	

C6+ Group Properties		
Assumed Composition		
C6 - 60.000%	C7 - 30.000%	C8 - 10.000%

Field H2S
0 PPM

PROTREND STATUS:

Passed By Validator on Dec 20, 2023

DATA SOURCE:

Imported

PASSED BY VALIDATOR REASON:

First sample taken @ this point, composition looks reasonable

VALIDATOR:

Dustin Armstrong

VALIDATOR COMMENTS:

OK

Source	Date	Notes
Dustin Armstrong	Dec 20, 2023 4:18 pm	Methane = 0 ppm

District I
1625 N. French Dr., Hobbs, NM 88240
Phone:(575) 393-6161 Fax:(575) 393-0720
District II
811 S. First St., Artesia, NM 88210
Phone:(575) 748-1283 Fax:(575) 748-9720
District III
1000 Rio Brazos Rd., Aztec, NM 87410
Phone:(505) 334-6178 Fax:(505) 334-6170
District IV
1220 S. St Francis Dr., Santa Fe, NM 87505
Phone:(505) 476-3470 Fax:(505) 476-3462

State of New Mexico
Energy, Minerals and Natural Resources
Oil Conservation Division
1220 S. St Francis Dr.
Santa Fe, NM 87505

DEFINITIONS

Action 300531

DEFINITIONS

Operator: CANYON E & P COMPANY 251 O'Connor Ridge Blvd. Irving, TX 75038	OGRID: 269864
	Action Number: 300531
	Action Type: [UF-OMA] Post-Plug Methane Monitoring (UF-OMA-MMB)

DEFINITIONS

The Orphan Well Mitigation Activity (OMA) forms are a subset of the OCD's forms exclusively designed for activities related to State of New Mexico's contracted plugging and reclamation activities. Specifically, these forms are used for orphan wells or associated facilities which are in a "Reclamation Fund Approved" status. This status represents wells or facilities where the OCD has acquired a hearing order allowing the OCD to perform plugging or reclamation on wells and associated facilities that no longer have a viable operator to perform the necessary work. These forms are not to be utilized for any other purpose.

District I
1625 N. French Dr., Hobbs, NM 88240
Phone:(575) 393-6161 Fax:(575) 393-0720
District II
811 S. First St., Artesia, NM 88210
Phone:(575) 748-1283 Fax:(575) 748-9720
District III
1000 Rio Brazos Rd., Aztec, NM 87410
Phone:(505) 334-6178 Fax:(505) 334-6170
District IV
1220 S. St Francis Dr., Santa Fe, NM 87505
Phone:(505) 476-3470 Fax:(505) 476-3462

State of New Mexico
Energy, Minerals and Natural Resources
Oil Conservation Division
1220 S. St Francis Dr.
Santa Fe, NM 87505

QUESTIONS

Action 300531

QUESTIONS

Operator: CANYON E & P COMPANY 251 O'Connor Ridge Blvd. Irving, TX 75038	OGRID: 269864
	Action Number: 300531
	Action Type: [UF-OMA] Post-Plug Methane Monitoring (UF-OMA-MMB)

QUESTIONS

Prerequisites	
[OGRID] Well Operator	[269864] CANYON E & P COMPANY
[API] Well Name and Number	[30-005-60078] DOUBLE L QUEEN UNIT #001K
Well Status	Plugged (not released)

Monitoring Event Information	
Please answer all the questions in this group.	
Reason For Filing	Post-Plug Methane Monitoring
Date of monitoring	12/06/2023
Latitude	33.05145
Longitude	-103.97415

Monitoring Event Details	
Please answer all the questions in this group.	
Flow rate in cubic meters per day (m³/day)	0.00
Test duration in hours (hr)	1.0
Average flow temperature in degrees Celsius (°C)	16.3
Average gauge flow pressure in kilopascals (kPag)	0.0
Methane concentration in part per million (ppm)	0
Methane emission rate in grams per hour (g/hr)	0.00
Testing Method	Steady State

Monitoring Contractor	
Please answer all the questions in this group.	
Name of monitoring contractor	Well Done New Mexico LLC