

Submit 1 Copy To Appropriate District

## Office

District I – (575) 393-6161  
 1625 N. French Dr., Hobbs, NM 88240  
 District II – (575) 748-1283  
 811 S. First St., Artesia, NM 88210  
 District III – (505) 334-6178  
 1000 Rio Brazos Rd., Aztec, NM 87410  
 District IV – (505) 476-3460  
 1220 S. St. Francis Dr., Santa Fe, NM  
 87505

State of New Mexico  
 Energy, Minerals and Natural Resources

Form C-103  
 Revised July 18, 2013

OIL CONSERVATION DIVISION  
 1220 South St. Francis Dr.  
 Santa Fe, NM 87505

WELL API NO.  
 30-045-09465

5. Indicate Type of Lease  
 STATE ☒ FEE ☐

6. State Oil & Gas Lease No.  
 E-1641-8

7. Lease Name or Unit Agreement Name  
 DELHI COM

8. Well Number  
 1

9. OGRID Number  
 372171

10. Pool name or Wildcat  
 Blanco Mesaverde

SUNDRY NOTICES AND REPORTS ON WELLS

(DO NOT USE THIS FORM FOR PROPOSALS TO DRILL OR TO DEEPEN OR PLUG BACK TO A DIFFERENT RESERVOIR. USE "APPLICATION FOR PERMIT" (FORM C-101) FOR SUCH PROPOSALS.)

1. Type of Well: Oil Well ☐ Gas Well ☒ Other

2. Name of Operator  
 HILCORP ENERGY COMPANY

3. Address of Operator  
 382 Road 3100, Aztec, NM 87410

4. Well Location

Unit Letter K : 1650' feet from the South line and 1650' feet from the West line  
 Section 16 Township 030N Range 008W NMPM County San Juan

11. Elevation (Show whether DR, RKB, RT, GR, etc.)  
 5690'

12. Check Appropriate Box to Indicate Nature of Notice, Report or Other Data

NOTICE OF INTENTION TO:

PERFORM REMEDIAL WORK ☐ PLUG AND ABANDON ☐  
 TEMPORARILY ABANDON ☐ CHANGE PLANS ☐  
 PULL OR ALTER CASING ☐ MULTIPLE COMPL ☐  
 DOWNHOLE COMMINGLE ☐  
 CLOSED-LOOP SYSTEM ☐  
 OTHER: ☐

SUBSEQUENT REPORT OF:

REMEDIAL WORK ☒ ALTERING CASING ☐  
 COMMENCE DRILLING OPNS. ☐ P AND A ☐  
 CASING/CEMENT JOB ☐  
 OTHER: ☐

13. Describe proposed or completed operations. (Clearly state all pertinent details, and give pertinent dates, including estimated date of starting any proposed work). SEE RULE 19.15.7.14 NMAC. For Multiple Completions: Attach wellbore diagram of proposed completion or recompletion.

Hilcorp Energy has remediated the intermediate casing pressure on the subject well per the attached summary report.

Spud Date:

Rig Release Date:

I hereby certify that the information above is true and complete to the best of my knowledge and belief.

SIGNATURE Priscilla Shorty TITLE Operations/Regulatory Technician – Sr. DATE 12/29/2023

Type or print name Priscilla Shorty E-mail address: pshorty@hilcorp.com PHONE: (505) 324-51858

**For State Use Only**

APPROVED BY: \_\_\_\_\_ TITLE \_\_\_\_\_ DATE \_\_\_\_\_

Conditions of Approval (if any):

DELHI COM 1

30.045.09465

INT PRESSURE REPAIR

11/30/2023 – CK PRESSURES. BH 0 PSI, TBG 30 PSI, CSG 600 PSI. NO BD. SPOT IN EQUIP, RIG UP PUMP. SDFN.

12/1/2023 - CK PRESSURES. BH 0 PSI, TBG 100 PSI, 7"- CSG 600 PSI. 10 MIN BD. **LEFT VOICE MAIL W/ MONICA, NMOCD AND ON BLM HOTLINE @ 8 AM.** ND WH. NU BOP. PULL HANGER TO FLOOR. RU TUBOSCOPE, LD TBG ON FLOAT, PULL SLOW, SET ON SLIPS. RD TUBOSCOPE. PU BIT & CSG SCRAPER, PU TBG OFF FLOAT SLM TO 4,215' TOO. LD BHA. SDFWE.

12/4/2023 - CK PRESSURES. BH 0 PSI, TBG 0 PSI, CSG 95 PSI. 12 MIN BD. PU RBP, TIH TO 4,180'. SET RBP. LOAD HOLE, CIRC AIR OUT, PSI TEST CSG TO 800 PSI. HOLD 10 MIN. TOO. LD SETTING TOOL. RU BASIN, **RUN CBL LOG DOWN TO 3,500'.** RIG DOWN BASIN. PU 35 JTS OFF FLOAT, TOO, X/OUT 2-3/8" RAMS TO 4-1/2". SDFN.

12/5/2023 - CK PRESSURES. BH 0 PSI, TBG 0 PSI, CSG 35 PSI. 4 MIN BD. ND BOP, PU 4-1/2" SPEAR, PULL 45K ON CSG, SLIPS STILL HUNG IN BOWL. RAP 3 ROUNDS ON PRIMER CORD AROUND HANGER SET OFF, PULLED SLIPS OUT, RETRIEVE 4-1/2 SPEAR, X/OUT 2K HANGER SPOOL TO 3K TBG HANGER SPOOL. **HEC ENGINEER SENT EMAIL WITH CBL TO MONICA KUEHLING, NMOCD, TO DISCUSS 4-1/2" CASING CUTTING OPTIONS.** NU BOP. RIG DOWN BASIN. SDFN.

12/6/2023 – CK PRESSURES. BH 0 PSI, TBG 0 PSI, CSG 45 PSI. 6 MIN BD. RU CUTTERS, RE-HEAD WIRELINE TO FISHING TOOLS, FREE POINT. 100% FREE @ 2,720', 100% @ 2,740', 55% FREE @ 2,755', 0% FREE @ 2,800', PULL WIRELINE. **HEC ENGINEER SENT MONICA KUEHLING, NMOCD, AN EMAIL VERIFYING VERBAL APPROVAL TO CUT 4-1/2" CASING @ 2,720' AND TO LOG CMT ON THE 7" CASING. TIH W/ CHEMICAL CUTTER, CUT 4-1/2" CSG @ 2,720'.** POOH, RD CUTTERS. LD 4-1/2" CSG. RU CUTTER, RUN 7" GAUGE RUN TO 2,720'. **RUN CBL FROM 2,710' TO SURFACE.** RD CUTTERS. X/OUT RAMS, SDFN.

12/7/2023 - CK PRESSURES. BH 0 PSI, TBG 0 PSI, CSG 0 PSI. 0 MIN BD. PU PACKER, TIH TO 300' TEST DOWN BACK SIDE TO 600 PSI, HELD. PT DOWN TBG TO 600 PSI, LOST 20 PSI IN 10 MIN. TIH TO 1005' TEST DOWN TBG TO 800 PSI LOST 20 PSI IN 10 MIN. TEST DOWN BACK SIDE TO 800 PSI, HELD. TIH TO 2700' TEST DOWN TBG 800 PSI LOST 50 SPI IN 10 MIN. TEST BACK SIDE TO 800 PSI, HELD. TOO. LD PACKER. **HEC ENGINEER SENT MONICA KUEHLING, NMOCD, AN EMAIL WITH PRESSURE TESTING RESULTS AND PROPOSED TO PUT A BALANCE PLUG ACROSS THE LINER TOP TO ISOLATE THE LEAK, PROPOSAL APPROVED.** SDFN.

12/8/2023 - CK PRESSURES. BH 0 PSI, TBG 0 PSI, CSG 0 PSI. 0 MIN BD. TIH TO 2,735'. RU DRAKE CMT, **BATCH MIX 4 BBLS, 3 BBLS WATER & 18 SX, FOR 12# MC 500, 1.32 & 5 # OF C-65 CMT DISPERSANT. PUMP 6.5 BBLS CMT, DISPLACE 9 BBLS, FRESH, REVERSE CIR 20 BBLS, ¼ BBL CMT BACK TO PIT.** TOO, SQUEEZE TO 600-750-900-1100 PSI BEFORE TAKEN SQUEEZE, 2 BBLS INTO SQUEEZE DROP DOWN TO 475 PSI IN 4 MIN. **VERBALLY NOTIFIED MONICA KUEHLING, NMOCD, OF ADDITIONAL HIC IN 7" CSG, FOUND WHILE SQUEEZING LINER TOP.** TIH TO 1,005' W/ PACKER, TEST DOWN BACKSIDE TO 625 PSI HELD 5 MIN OK. SDFWE.

12/11/2023 - CK PRESSURES. BH 0 PSI, TBG 0 PSI, CSG 0 PSI. 0 MIN BD. GET PUMP CIRC, TEST DOWN TBG T/ 600 PSI, LOST 400 PSI IN 1 MIN. RELEASE PACKER, TOO. LD PACKER, PUT 6-1/4" BIT TIH TAG @ 2,576'. TOO. LD BIT. TIH W/ PACKER SET @ 2,526' TEST DOWN TBG, TO 600 PSI, LOST 20 PSI IN 5 MIN, PUMP DOWN BACKSIDE T/ 600 PSI LOST 450 PSI IN 1 MIN, TOO. T/ 1,886' PSI TEST DOWN BACKSIDE 600 PSI HELD. TIH T/ 2,203' TEST 600 PSI LOST 400 SPI IN 1 MIN, TOO. T/ 2,079' LOST 400 PSI IN 1 MIN, TOO. T/

DELHI COM 1

30.045.09465

INT PRESSURE REPAIR

2,016' 600 PSI, HELD. TIH TO/ 2,047' PSI UP T/ 600 PSI LOST 400 PSI IN 1 MIN. TEST DOWN TBG T/ 600 PSI HELD, TOO H LD PACKER. **VERBALLY NOTIFIED MONICA KUEHLING, NMOCD, OF HOLE LOCATION, APPROVAL GIVEN TO HESITATE SQUEEZE INTO HIC.** SDFN.

12/12/2023 - CK PRESSURES. BH 0 PSI, TBG 0 PSI, CSG 0 PSI. 0 MIN BD. RU DRAKE TEST LINES. **MIX 50 SX OF TYPE 3 CMT @ 14.6#, 11.37 YIELD, MIX 7.9 BBLS FRESH, PUMP 12.2 BBLS CMT, DISPLACE W/ 6 BBLS FRESH. PULL SLOW UP TO 1,654' REVERSE OUT 2/X, ½ BBL CMT BACK.** TOO H, PU PACKER. TIH, SQUEEZE 5.2 BBLS AWAY, 600-800 PSI, LOCKED UP @ 814 PSI. RD DRAKE. **THOMAS VERMERSCH, NMOCD, ON LOCATION.** SDFN.

12/13/2023 - CK PRESSURES. BH 0 PSI, TBG 0 PSI, CSG 0 PSI. 0 MIN BD. TOO H W/ PACKER. LD PACKER, TIH TAG @ 1,933'. RU SWIVEL. DRILL CMT FROM 1,901' TO 2,093'. CIRC HOLE CLEAN. TEST CSG TO 600 PSI, LOST 140 PSI IN 5 MIN. DRILL CMT FROM 2,093' TO 2,150', CIRC HOLE CLEAN. HANG SWIVEL. SDFN.

12/14/2023 - CK PRESSURES. BH 0 PSI, TBG 0 PSI, CSG 0 PSI. 0 MIN BD. CIRC AIR OUT, PSI TEST TO 600 PSI. DRILL CMT FROM 2,570' TO 2,720' TOL. CIRC HOLE CLEAN, PSI TEST CSG TO 600 PSI, LOST 260 PSI IN 5 MIN. TOO H LD BIT, PU PACKER TIH TO 2,016'. TEST DOWN BACKSIDE 600 PSI HELD, TIH TO 2,047' TEST DOWN BACK SIDE TO 600 PSI, LOST 360 IN 5 MIN, TEST DOWN TBG 600 PSI FOR 15 MIN. **VERBALLY NOTIFIED MONICA KUEHLING, NMOCD, THAT THE SQUEEZE WAS UNSUCCESSFUL, APPROVAL GIVEN TO RE-SQUEEZE.** TOO H LD PACKER, TIH TO 2,058'. SDFN.

12/15/2023 - CK PRESSURES. BH 0 PSI, TBG 0 PSI, CSG 0 PSI. 0 MIN BD. RU DRAKE. **MIX 12 BBLS OR 50 SX OF TYPE 3, DENSITY 14.6, YIELD 1.37, MIX WATER 6.64, PUMP CMT, DISPLACE 6 BBLS. REVERSE CIRC ¼ BBL BACK TO PIT.** TOO H, PU PACKER, TIH TO 1,100' TO SET PACKER. SQUEEZE CMT ¾ BBL AWAY, PSI LOCKED UP @ 780 PSI. RD DRAKE. RU BIG RED TOOL, REGULATE 800 PSI DOWN TBG. SDFWE.

12/18/2023 - CK PRESSURES. BH 0 PSI, TBG 0 PSI, CSG 0 PSI. 0 MIN BD. TOO H LD PACKER, PU 6-1/4" BIT, TIH AND TAG @ 1,781'. DRILL CMT FROM 1,781' TO 1,969'. LD 5 JTS. SDFN.

12/19/2023 - CK PRESSURES. BH 0 PSI, TBG 0 PSI, CSG 0 PSI. 0 MIN BD. DRILL CMT FROM 1,969' TO 2,070'. CIRC HOLE CLEAN, PSI TEST CSG TO 600PSI FOR 15 MIN LOST 5#. TOO H LD 6-1/4" BIT, PU 3-7/8" BIT. TIH & TAG @ 2,720' X/OUT #2 SWAB ON PUMP, X/OUT STRIPPER RUBBER. DRILL CMT FROM 2,720' TO 2,745'. CIRC HOLE CLEAN. TEST CSG TO 600 PSI FOR 15 MIN HELD. SDFN.

12/20/2023 - CK PRESSURES. BH 0 PSI, TBG 0 PSI, CSG 0 PSI. 0 MIN BD. RU WILSON, PRE-TEST CSG TO 600 PSI. **THOMAS VERMERSCH, NMOCD, WITNESSED BH AND MIT TEST. 560 PSI 30 MIN, ALL HELD.** RD WILSON. TOO H LD DRILL COLLARS & BIT, PU RBP RETRIEVING TOOL. TIH TO 4,100' UNLOAD HOLE. CO SAND FROM 4,150' TO 4,170'. TOO H LD RBP. SDFN.

12/21/2023 - PRESSURES. BH 0 PSI, TBG 0 PSI, CSG 12 PSI. 10 MIN BD. TIH W/ PROD TBG. TEST TBG TO 600 PSI, PUMP 3 BBLS WATER, PSI UP TO 980 PSI, PUMP CHECK OFF @ 4760'. TAG FILL @ 4,797', CO FROM 4,797' TO 4,812'. COULD NOT GET PAST 4,812' PBTD @ 4,905'. LAND WELL AS: 1 – EXP CHECK, 1 – SN, 149 JTS 2-3/8" 4,7# J-55, 3 PUP JTS, 1 JT 2-3/8" 4,7# J-55, 1-HANGER SET @ 4727.5', SN @ 4,726'. ND BOP, NU WH. RD RR.

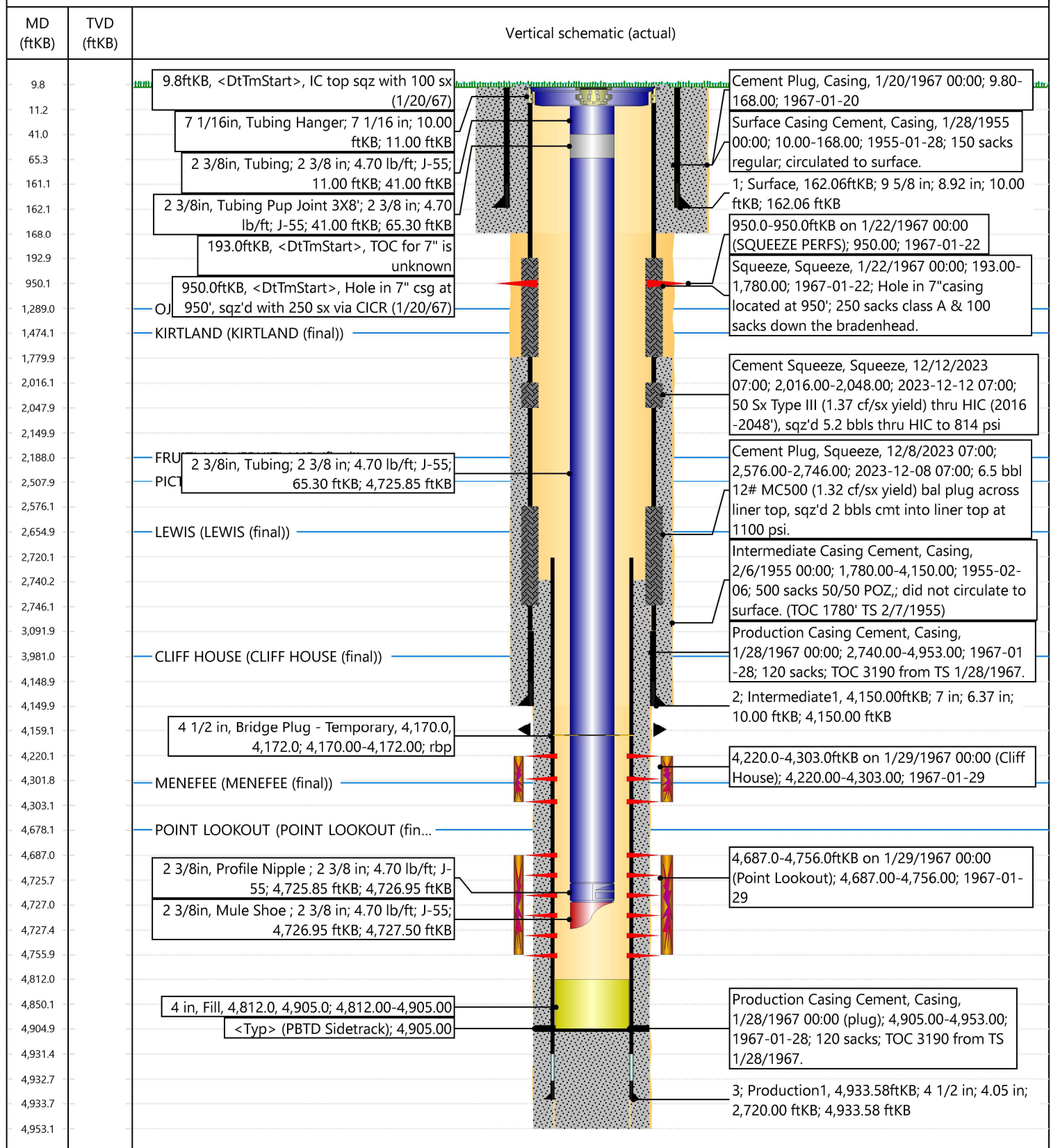


## Current Schematic - Version 3

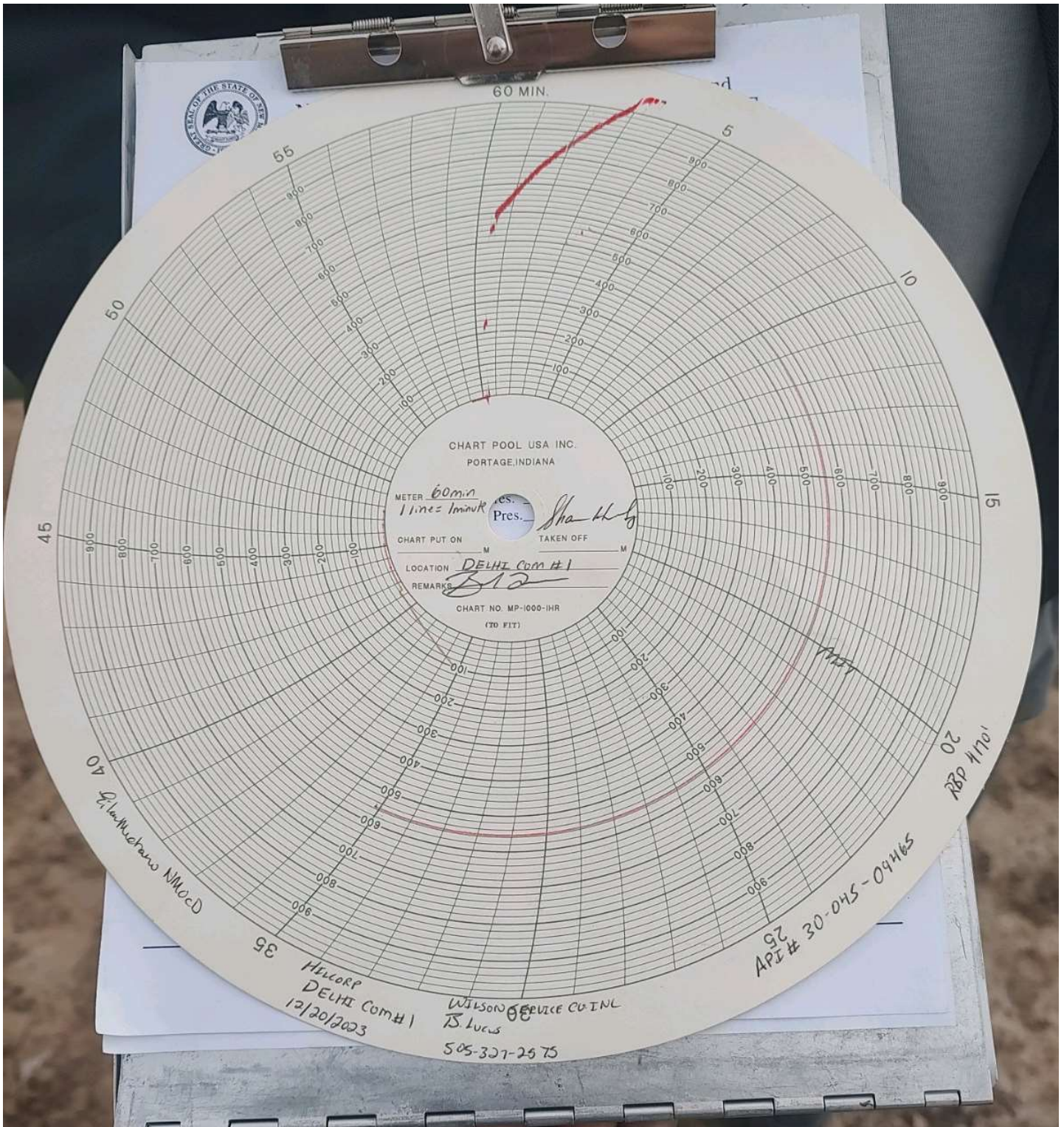
Well Name: DELHI COM #1

API / UWI 3004509465	Surface Legal Location 016-030N-008W-K	Field Name BLANCO MESAVERDE (PRORATED GAS)	Route 0409	State/Province NEW MEXICO	Well Configuration Type
Ground Elevation (ft) 5,690.00	Original KB/RT Elevation (ft) 5,700.00	RKB to GL (ft) 10.00	KB-Casing Flange Distance (ft)	KB-Tubing Hanger Distance (ft)	

## Sidetrack









# NEW MEXICO ENERGY, MINERALS and NATURAL RESOURCES DEPARTMENT

## MECHANICAL INTEGRITY TEST REPORT (TA OR UIC)

Date of Test 12/20/2023 Operator Hilcorp Energy Company API # 30-045-09465  
Property Name Delhi Com 1 Well # 1 Location: Unit K Sec 16 Twn 30N Rge 8W

Land Type:  
State ☒  
Federal ☐  
Private ☐  
Indian ☐

Well Type:  
Water Injection ☐  
Salt Water Disposal ☐  
Gas Injection ☐  
Producing Oil/Gas ☒  
Pressure observation ☐

Temporarily Abandoned Well (Y/N): \_\_\_\_\_ TA Expires: \_\_\_\_\_

Casing Pres. Ø Tbg. SI Pres. \_\_\_\_\_ Max. Inj. Pres. \_\_\_\_\_  
Bradenhead Pres. Ø Tbg. Inj. Pres. \_\_\_\_\_  
Tubing Pres. Ø  
Int. Casing Pres. N/A

Pressured annulus up to 560 psi. for 30 mins. Test passed/failed

REMARKS: last calibrated 7/20/2023 1000# Spring; RBP - 4170'  
Pressured up to 560 psi; Dropped to 559 psi and held last 10 minutes of test.

By [Signature]  
(Operator Representative)

Witness [Signature]  
(NMOCD)

(Position)

Revised 02-11-02

Oil Conservation Division \* 1000 Rio Brazos Road \* Aztec, New Mexico 87410  
Phone: (505) 334-6178 \* Fax (505) 334-6170 \* <http://www.emnrd.state.nm.us>



**Priscilla Shorty**

---

**From:** Scott Anderson  
**Sent:** Friday, December 22, 2023 8:36 AM  
**To:** Priscilla Shorty  
**Subject:** Fwd: Hilcorp - Delhi Com 1 (API: 3004509465)

FYI.

Get [Outlook for iOS](#)

---

**From:** Scott Anderson  
**Sent:** Thursday, December 7, 2023 1:45:51 PM  
**To:** Kuehling, Monica, EMNRD <monica.kuehling@state.nm.us>  
**Cc:** Mandi Walker <mwalker@hilcorp.com>; Shane Smith <Shane.Smith@hilcorp.com>; Michael Mayfield <mmayfield@hilcorp.com>; JP Knox <jknox@hilcorp.com>; Clay Padgett <cpadgett@hilcorp.com>; Brian Bradshaw <Brian.Bradshaw@hilcorp.com>; Amanda Atencio <Amanda.Atencio@hilcorp.com>; Christian Zuvich <Christian.Zuvich@hilcorp.com>; Shane Hendry - (C) <Shane.Hendry@hilcorp.com>  
**Subject:** RE: Hilcorp - Delhi Com 1 (API: 3004509465)

Monica - Per our phone conversation, the plan forward on the Delhi Com 1 is to lay a balanced plug across the liner top and hesitate squeeze the cement into the leak. We will let the cement set up then drill it out and pressure test the entire envelope. Pending a successful pressure test we will schedule the well for an MIT early next week.

In addition, we are evaluating this wellbore for a potential uphole recompleat. Following a successful MIT, we would like to leave the CIBP in place in the 4-1/2" casing to avoid having to reset a CIBP when we come back to prep the well for recompleat.

Scott Anderson  
San Juan North – Operations Engineer  
Hilcorp Energy Company  
W: 713-289-2772  
C: 248-761-3965

---

**From:** Scott Anderson  
**Sent:** Thursday, December 7, 2023 1:10 PM  
**To:** Kuehling, Monica, EMNRD <monica.kuehling@state.nm.us>  
**Cc:** Mandi Walker <mwalker@hilcorp.com>; Shane Smith <Shane.Smith@hilcorp.com>; Michael Mayfield <mmayfield@hilcorp.com>; JP Knox <jknox@hilcorp.com>; Clay Padgett <cpadgett@hilcorp.com>; Brian Bradshaw <Brian.Bradshaw@hilcorp.com>; Amanda Atencio <Amanda.Atencio@hilcorp.com>; Christian Zuvich <Christian.Zuvich@hilcorp.com>; Shane Hendry - (C) <Shane.Hendry@hilcorp.com>  
**Subject:** RE: Hilcorp - Delhi Com 1 (API: 3004509465)

Monica – Attached is the 7" CBL that we ran last night. We went in the hole this AM with the packer and pressure tested down the casing and the tubing at 300', 1005', and 2700'. The 7" is holding like a jug all of the way to the top of the liner. Down the tubing at that depth there is a slight leakoff. The hole is holding full and we had 0 psi on it this morning. Given the anomaly that is right below the top of liner, our proposal is to put a balanced plug across the liner top to isolate the leak. I will call you shortly to discuss.

Scott Anderson

San Juan North – Operations Engineer  
Hilcorp Energy Company  
W: 713-289-2772  
C: 248-761-3965

---

**From:** Scott Anderson

**Sent:** Wednesday, December 6, 2023 10:21 AM

**To:** 'Kuehling, Monica, EMNRD' <[monica.kuehling@state.nm.us](mailto:monica.kuehling@state.nm.us)>

**Cc:** Mandi Walker <[mwalker@hilcorp.com](mailto:mwalker@hilcorp.com)>; Shane Smith <[Shane.Smith@hilcorp.com](mailto:Shane.Smith@hilcorp.com)>; Michael Mayfield <[mmayfield@hilcorp.com](mailto:mmayfield@hilcorp.com)>; JP Knox <[jknox@hilcorp.com](mailto:jknox@hilcorp.com)>; Clay Padgett <[cpadgett@hilcorp.com](mailto:cpadgett@hilcorp.com)>; Brian Bradshaw <[Brian.Bradshaw@hilcorp.com](mailto:Brian.Bradshaw@hilcorp.com)>; Amanda Atencio <[Amanda.Atencio@hilcorp.com](mailto:Amanda.Atencio@hilcorp.com)>; Christian Zuvich <[Christian.Zuvich@hilcorp.com](mailto:Christian.Zuvich@hilcorp.com)>; Shane Hendry - (C) <[Shane.Hendry@hilcorp.com](mailto:Shane.Hendry@hilcorp.com)>

**Subject:** RE: Hilcorp - Delhi Com 1 (API: 3004509465)

Monica – Per our phone conversation, freepoint indicated that the pipe is 50% free at 2755' and 100% stuck at 2805', but 100% free at 2740'. The stringer appears to be bonded and not just an anomaly. That being said, with your verbal approval over the phone, our new plan forward is to make a cut at 2720' (not 2620', as I mentioned on the phone) and recover the casing above the cut. We will then run a gauge ring to the new liner top and log the cement on the 7", before we start hole hunting. I will keep you posted on our progress.

Scott Anderson  
San Juan North – Operations Engineer  
Hilcorp Energy Company  
W: 713-289-2772  
C: 248-761-3965

---

**From:** Scott Anderson

**Sent:** Tuesday, December 5, 2023 2:42 PM

**To:** Kuehling, Monica, EMNRD <[monica.kuehling@state.nm.us](mailto:monica.kuehling@state.nm.us)>

**Cc:** Mandi Walker <[mwalker@hilcorp.com](mailto:mwalker@hilcorp.com)>; Shane Smith <[Shane.Smith@hilcorp.com](mailto:Shane.Smith@hilcorp.com)>; Michael Mayfield <[mmayfield@hilcorp.com](mailto:mmayfield@hilcorp.com)>; JP Knox <[jknox@hilcorp.com](mailto:jknox@hilcorp.com)>; Clay Padgett <[cpadgett@hilcorp.com](mailto:cpadgett@hilcorp.com)>; Brian Bradshaw <[Brian.Bradshaw@hilcorp.com](mailto:Brian.Bradshaw@hilcorp.com)>; Amanda Atencio <[Amanda.Atencio@hilcorp.com](mailto:Amanda.Atencio@hilcorp.com)>; Christian Zuvich <[Christian.Zuvich@hilcorp.com](mailto:Christian.Zuvich@hilcorp.com)>; Shane Hendry - (C) <[Shane.Hendry@hilcorp.com](mailto:Shane.Hendry@hilcorp.com)>

**Subject:** RE: Hilcorp - Delhi Com 1 (API: 3004509465)

Monica – A freepoint truck came available for first thing in the AM tomorrow and we are going to hold off cutting casing until we know definitively where the pipe is stuck. Once we have the results I will plan to discuss the plan forward with you again.

Scott Anderson  
San Juan North – Operations Engineer  
Hilcorp Energy Company  
W: 713-289-2772  
C: 248-761-3965

---

**From:** Scott Anderson

**Sent:** Tuesday, December 5, 2023 12:50 PM

**To:** Kuehling, Monica, EMNRD <[monica.kuehling@state.nm.us](mailto:monica.kuehling@state.nm.us)>

**Cc:** Mandi Walker <[mwalker@hilcorp.com](mailto:mwalker@hilcorp.com)>; Shane Smith <[Shane.Smith@hilcorp.com](mailto:Shane.Smith@hilcorp.com)>; Michael Mayfield <[mmayfield@hilcorp.com](mailto:mmayfield@hilcorp.com)>; JP Knox <[jknox@hilcorp.com](mailto:jknox@hilcorp.com)>; Clay Padgett <[cpadgett@hilcorp.com](mailto:cpadgett@hilcorp.com)>; Brian Bradshaw <[Brian.Bradshaw@hilcorp.com](mailto:Brian.Bradshaw@hilcorp.com)>; Amanda Atencio <[Amanda.Atencio@hilcorp.com](mailto:Amanda.Atencio@hilcorp.com)>; Christian Zuvich



<[Christian.Zuvich@hilcorp.com](mailto:Christian.Zuvich@hilcorp.com)>; Shane Hendry - (C) <[Shane.Hendry@hilcorp.com](mailto:Shane.Hendry@hilcorp.com)>

**Subject:** Hilcorp - Delhi Com 1 (API: 3004509465)

Monica – Attached is the CBL for the 4-1/2" string in the Delhi Com 1. The TOC is between 3450-3500', which is about 250-300' lower than what the temp survey predicted following the primary job (1967). There is a solid trace of diminishing amplitude from 3150' down, though, which could be evidence of the cement receding during cooling. There is also a stringer at 2740'. It is unclear if this is cement, a bridge, or just an anomaly, however, it needs to play into the discussion. I will call shortly to discuss the cutting plan.

Scott Anderson  
San Juan North – Operations Engineer  
Hilcorp Energy Company  
W: 713-289-2772  
C: 248-761-3965

**District I**  
1625 N. French Dr., Hobbs, NM 88240  
Phone:(575) 393-6161 Fax:(575) 393-0720

**District II**  
811 S. First St., Artesia, NM 88210  
Phone:(575) 748-1283 Fax:(575) 748-9720

**District III**  
1000 Rio Brazos Rd., Aztec, NM 87410  
Phone:(505) 334-6178 Fax:(505) 334-6170

**District IV**  
1220 S. St Francis Dr., Santa Fe, NM 87505  
Phone:(505) 476-3470 Fax:(505) 476-3462

State of New Mexico

Energy, Minerals and Natural Resources

Oil Conservation Division

1220 S. St Francis Dr.

Santa Fe, NM 87505

CONDITIONS

Action 298496

CONDITIONS

Operator: HILCORP ENERGY COMPANY 1111 Travis Street Houston, TX 77002	OGRID: 372171
	Action Number: 298496
	Action Type: [C-103] Sub. Workover (C-103R)

CONDITIONS

Created By	Condition	Condition Date
mkuehling	Bradenhead test required 30 days from rig move 6 months from rig move and 1 year from rig move	1/5/2024