



Interval Report

Interval Start Date: Wednesday, August 31, 2022, 10:34 PM MDT**Interval End Date:** Thursday, September 1, 2022, 10:56 AM MDT**Device:** VB100-039**Well Licensee:** NMOCD**Well Name:** Double L Queen 004**UWI:** 30-005-60078**Well License Number:** 30-005-60164**Surface Location:** Bogle**Bottom Hole Location:** unknown**Test Operator:** ces**Authorized By:** NMOCD**Test Reason:** IJJA PRE PLUG**Scope Of Work:** 12-Hour**AFE Number:** NMOCD038AA / APWS22.001**GPS:** 33.0768166,-103.9869003**Notes:** GTG

Flow Test

Average Flowrate

1.02

m3/d

0.11

g/hour

Average Flow

Temperature

22.8

°C

Average Flow

Pressure

0.1

kPag

Flow Duration

12.4

hours

Pressure Test

Maximum Shut-In Pressure

--

Last 24Hr Average Shut-In
Pressure

--

*Displays after 24hrs of stabilized shut-
in pressure

Extrapolated Shut-In Pressure

--

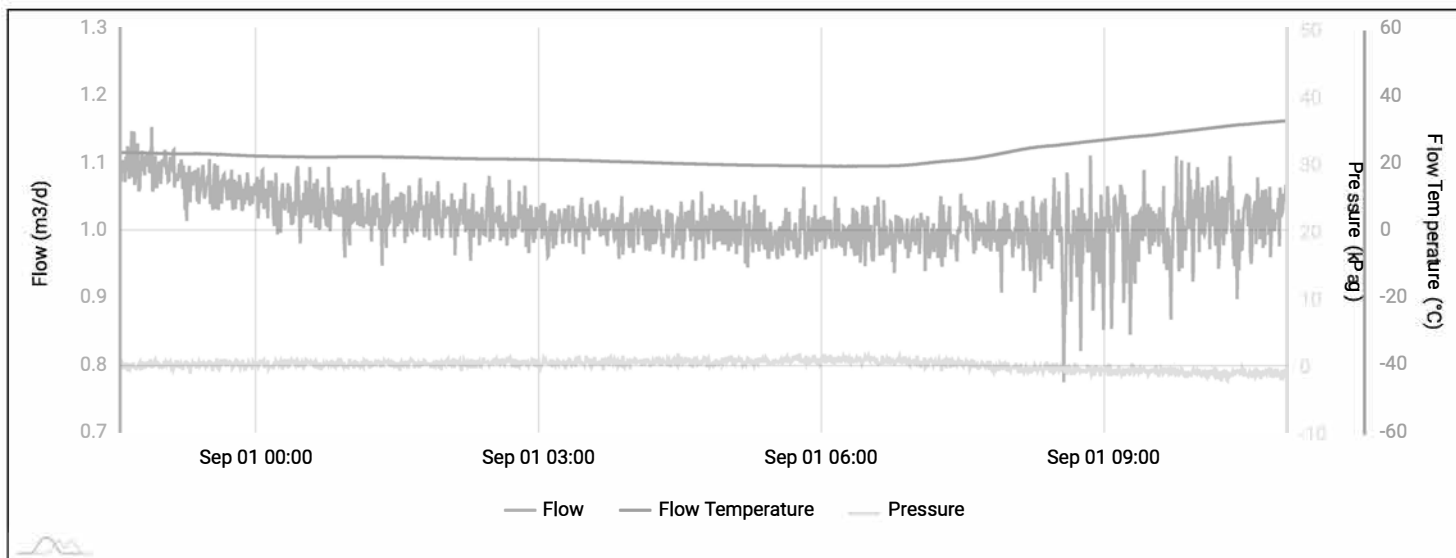
*Only valid for an unstable shut-in
pressure

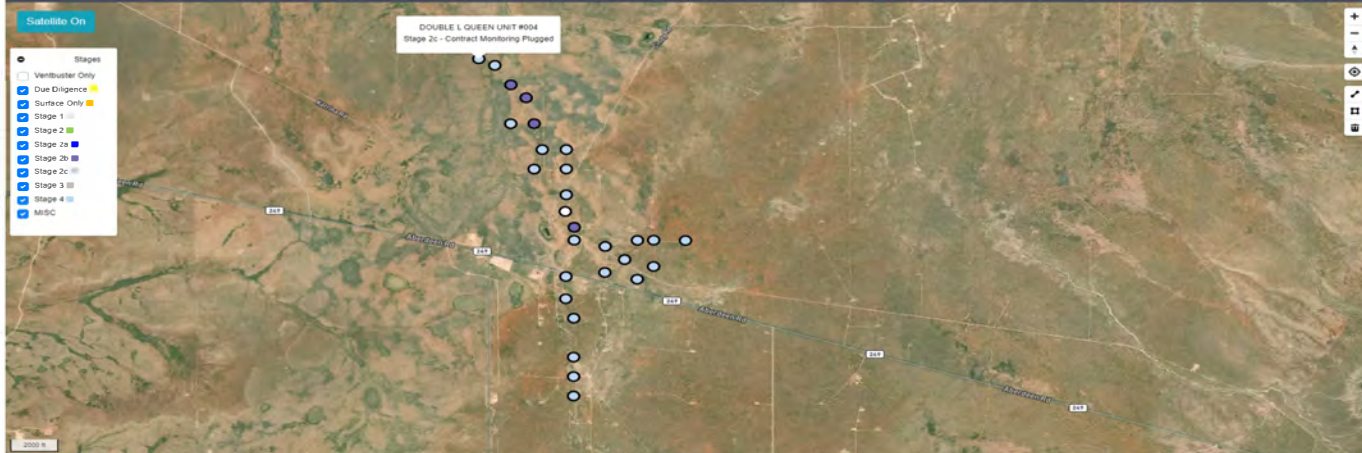
Shut-in Pressure Duration

0.0

hours

Flow/Pressure/Temperature Timeseries





Well Name: DLQ

Well Number: #004

API Number: 30-005-60164

- ¹ Methane Calculation: 717 grams CH₄ per cubic meter (717 x 1.05 m³/day = 752.85 g/day total /24 = 31.37 g/hour x 0.10697 (methane concentration) = **40.41 g/hour CH₄**). **Methane, gas** weighs 0.000717 gram per cubic centimeter or 0.717 kilogram per cubic meter, i.e. density of methane, gas is equal to 0.717 kg/m³; at 0°C (32°F or 273.15K) at standard atmospheric pressure. In Imperial or US customary measurement system, the density is equal to 0.044 pound per cubic foot [lb/ft³].

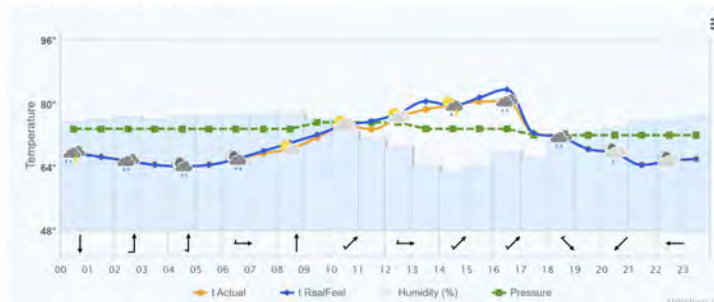
m³/d

C5+ Gas Analysis Report			
14852G	Double L Queen #4 Pre Plug	Double L Queen #4	
Sample Point Code	Sample Point Name	Sample Point Location	
Laboratory Services	2022057687	Tedlar Bag	Stacy - Spot
Source Laboratory	Lab File No:	Customer Identity	Source:
USA	USA	USA	New Mexico
State	Area Name:	Field Name:	Locality Name:
Aug 31, 2022 14:30	Aug 31, 2022 14:30	Sep 6, 2022 09:18	Sep 6, 2022
Date Sampled	Date of Collection	Date Received	Date Reported
Ambient Temp (°F)	Flow Rate (SCF)	Tolerance	Impurity @ Temp (°F)
	Analyte		Source Conditions
Well Done Foundation		NG	Lab Source Description
Customer:		Lab Source Description	
Component	Normalized Mol %	Un-Normalized Mol %	(g/m ³)
H ₂ O (H ₂ O)	0.0000	0	
Nitrogen (N ₂)	99.4790	99.47965	
CO ₂ (CO ₂)	0.0250	0.02518	
Methane (CH ₄)	0.3410	0.34057	
Ethane (C ₂)	0.0120	0.01188	0.0030
Propane (C ₃)	0.0000	0.00076	0.0003
i-Butane (C ₄)	0.0000	0	0.0000
n-Butane (nC ₄)	0.0000	0	0.0000
i-Pentane (C ₅)	0.0000	0	0.0000
n-Pentane (nC ₅)	0.0000	0	0.0000
Hexanes Plus (C ₆ +)	0.1750	0.17495	0.0090
TOTAL:	100.0000	100.0000	0.0040
Gross Heating Values (Real, BTU/lb)			
Dry			
11.606 H ₂ @ 60.000% Dry			
Dry			
10.8			
Calculated Total Sample Properties			
(GPA2) (4) Calculated at Standard Conditions			
Relative Density (Real)			
0.9699			
Molecular Weight			
28.0661			
C5+ Group Properties			
Assumed Composition:			
C6 - 60.000% C7 - 30.000% C8 - 10.000%			
Fuel H ₂			
0.0000			
PROFORM STATION:			
Passed by Validator on Sep 7, 2022			
PASSED BY VALIDATOR REASON:			
Close enough to be considered reasonable.			
VALIDATOR:			
Luis Cano			
VALIDATOR COMMENTS:			
ok			
Analyzer Information			
Device Type: Gas Chromatograph			
Device Model: GC-2014			
Shimadzu			
Last Cal Date: Aug 14, 2023			
Source	Date	Notes	
Luis Cano	Sep 7, 2022 7:43 am	Methane = 3.410 PPM	

August 31, 2022

	Atmospheric conditions and temperature °F	RealFeel °F	Atmospheric pressure inHg	Wind speed mph	Humidity %
Night	+66°	+66°	26.6	NE 6.9	87%
Morning	+68°	+68°	26.6	N 6.3	92%
Day	+79°	+81°	26.6	NE 7.6	52%
Evening	+68°	+68°	26.5	NE 6	77%

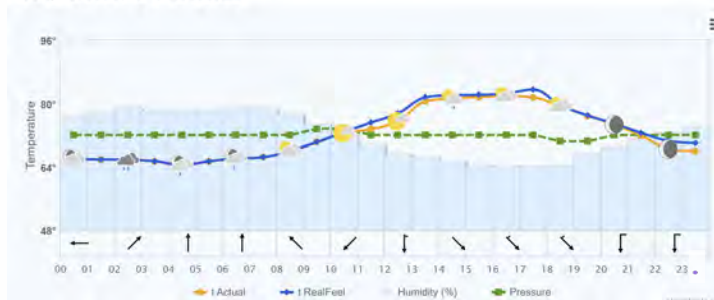
Hourly forecast for 31.08.2022



September 01, 2022

	Atmospheric conditions and temperature °F	RealFeel °F	Atmospheric pressure inHg	Wind speed mph	Humidity %
Night	+66°	+66°	26.5	NE 3.6	93%
Morning	+66°	+66°	26.5	W 3.6	97%
Day	+81°	+82°	26.5	S 5.6	58%
Evening	+77°	+77°	26.4	S 8.3	61%

Hourly forecast for 01.09.2022





www.permianls.com
575.397.3713 2609 W Marland Hobbs NM 88240

C6+ Gas Analysis Report

14852G	Double L Queen #4 Pre Plug	Double L Queen #4	
Sample Point Code	Sample Point Name	Sample Point Location	
Laboratory Services	2022057687	Tedlar Bag	Stacy - Spot
Source Laboratory	Lab File No	Container Identity	Sampler
USA	USA	USA	New Mexico
District	Area Name	Field Name	Facility Name
Aug 31, 2022 14:30	Aug 31, 2022 14:30	Sep 6, 2022 09:18	Sep 6, 2022
Date Sampled	Date Effective	Date Received	Date Reported
Torrance			
Ambient Temp (°F)	Flow Rate (Mcf)	Analyst	Press PSI @ Temp °F Source Conditions
Well Done Foundation		NG	
Operator		Lab Source Description	

Component	Normalized Mol %	Un-Normalized Mol %	GPM
H2S (H2S)	0.0000	0	
Nitrogen (N2)	99.4790	99.47985	
CO2 (CO2)	0.0250	0.02518	
Methane (C1)	0.3410	0.34057	
Ethane (C2)	0.0120	0.01168	0.0030
Propane (C3)	0.0080	0.00776	0.0020
I-Butane (IC4)	0.0000	0	0.0000
N-Butane (NC4)	0.0000	0	0.0000
I-Pentane (IC5)	0.0000	0	0.0000
N-Pentane (NC5)	0.0000	0	0.0000
Hexanes Plus (C6+)	0.1350	0.13495	0.0590
TOTAL	100.0000	100.0000	0.0640

Gross Heating Values (Real, BTU/ft³)			
14.696 PSI @ 60.00 Å°F	14.73 PSI @ 60.00 Å°F		
Dry	Saturated	Dry	Saturated
10.8	11.5	10.8	11.5

Calculated Total Sample Properties	
GPA2145-16 *Calculated at Contract Conditions	
Relative Density Real	Relative Density Ideal
0.9689	0.9690
Molecular Weight	
28.0661	

C6+ Group Properties		
Assumed Composition		
C6 - 60.000%	C7 - 30.000%	C8 - 10.000%

Field H2S
0 PPM

PROTREND STATUS: Passed By Validator on Sep 7, 2022
DATA SOURCE: Imported

PASSED BY VALIDATOR REASON:
Close enough to be considered reasonable.

VALIDATOR:
Luis Cano

VALIDATOR COMMENTS:
ok

Method(s): Gas C6+ - GPA 2261, Extended Gas - GPA 2286, Calculations - GPA 2172

Analyzer Information			
Device Type:	Gas Chromatograph	Device Make:	Shimadzu
Device Model:	GC-2014	Last Cal Date:	Aug 14, 2022

Source	Date	Notes
Luis Cano	Sep 7, 2022 7:43 am	Methane = 3,410 PPM

District I
1625 N. French Dr., Hobbs, NM 88240
Phone:(575) 393-6161 Fax:(575) 393-0720
District II
811 S. First St., Artesia, NM 88210
Phone:(575) 748-1283 Fax:(575) 748-9720
District III
1000 Rio Brazos Rd., Aztec, NM 87410
Phone:(505) 334-6178 Fax:(505) 334-6170
District IV
1220 S. St Francis Dr., Santa Fe, NM 87505
Phone:(505) 476-3470 Fax:(505) 476-3462

State of New Mexico
Energy, Minerals and Natural Resources
Oil Conservation Division
1220 S. St Francis Dr.
Santa Fe, NM 87505

DEFINITIONS

Action 300572

DEFINITIONS

Operator: CANYON E & P COMPANY 251 O'Connor Ridge Blvd. Irving, TX 75038	OGRID: 269864
	Action Number: 300572
	Action Type: [UF-OMA] Pre-Plug Methane Monitoring (UF-OMA-MMA)

DEFINITIONS

The Orphan Well Mitigation Activity (OMA) forms are a subset of the OCD's forms exclusively designed for activities related to State of New Mexico's contracted plugging and reclamation activities. Specifically, these forms are used for orphan wells or associated facilities which are in a "Reclamation Fund Approved" status. This status represents wells or facilities where the OCD has acquired a hearing order allowing the OCD to perform plugging or reclamation on wells and associated facilities that no longer have a viable operator to perform the necessary work. These forms are not to be utilized for any other purpose.

District I
1625 N. French Dr., Hobbs, NM 88240
Phone:(575) 393-6161 Fax:(575) 393-0720
District II
811 S. First St., Artesia, NM 88210
Phone:(575) 748-1283 Fax:(575) 748-9720
District III
1000 Rio Brazos Rd., Aztec, NM 87410
Phone:(505) 334-6178 Fax:(505) 334-6170
District IV
1220 S. St Francis Dr., Santa Fe, NM 87505
Phone:(505) 476-3470 Fax:(505) 476-3462

State of New Mexico
Energy, Minerals and Natural Resources
Oil Conservation Division
1220 S. St Francis Dr.
Santa Fe, NM 87505

QUESTIONS

Action 300572

QUESTIONS

Operator: CANYON E & P COMPANY 251 O'Connor Ridge Blvd. Irving, TX 75038	OGRID: 269864
	Action Number: 300572
	Action Type: [UF-OMA] Pre-Plug Methane Monitoring (UF-OMA-MMA)

QUESTIONS

Prerequisites	
[OGRID] Well Operator	[269864] CANYON E & P COMPANY
[API] Well Name and Number	[30-005-60164] DOUBLE L QUEEN UNIT #004
Well Status	Plugged (not released)

Monitoring Event Information	
<i>Please answer all the questions in this group.</i>	
Reason For Filing	Pre-Plug Methane Monitoring
Date of monitoring	08/31/2022
Latitude	33.0768166
Longitude	-103.9869003

Monitoring Event Details	
<i>Please answer all the questions in this group.</i>	
Flow rate in cubic meters per day (m³/day)	1.02
Test duration in hours (hr)	12.4
Average flow temperature in degrees Celsius (°C)	22.8
Average gauge flow pressure in kilopascals (kPag)	0.1
Methane concentration in part per million (ppm)	3,410
Methane emission rate in grams per hour (g/hr)	0.11
Testing Method	Steady State

Monitoring Contractor	
<i>Please answer all the questions in this group.</i>	
Name of monitoring contractor	Well Done New Mexico LLC