



333 Main Street Shelby, Montana 59474 / P.O. Box 10640 Bozeman, MT 59179

(406) 460-0903

TO: Jim Griswold, OCD

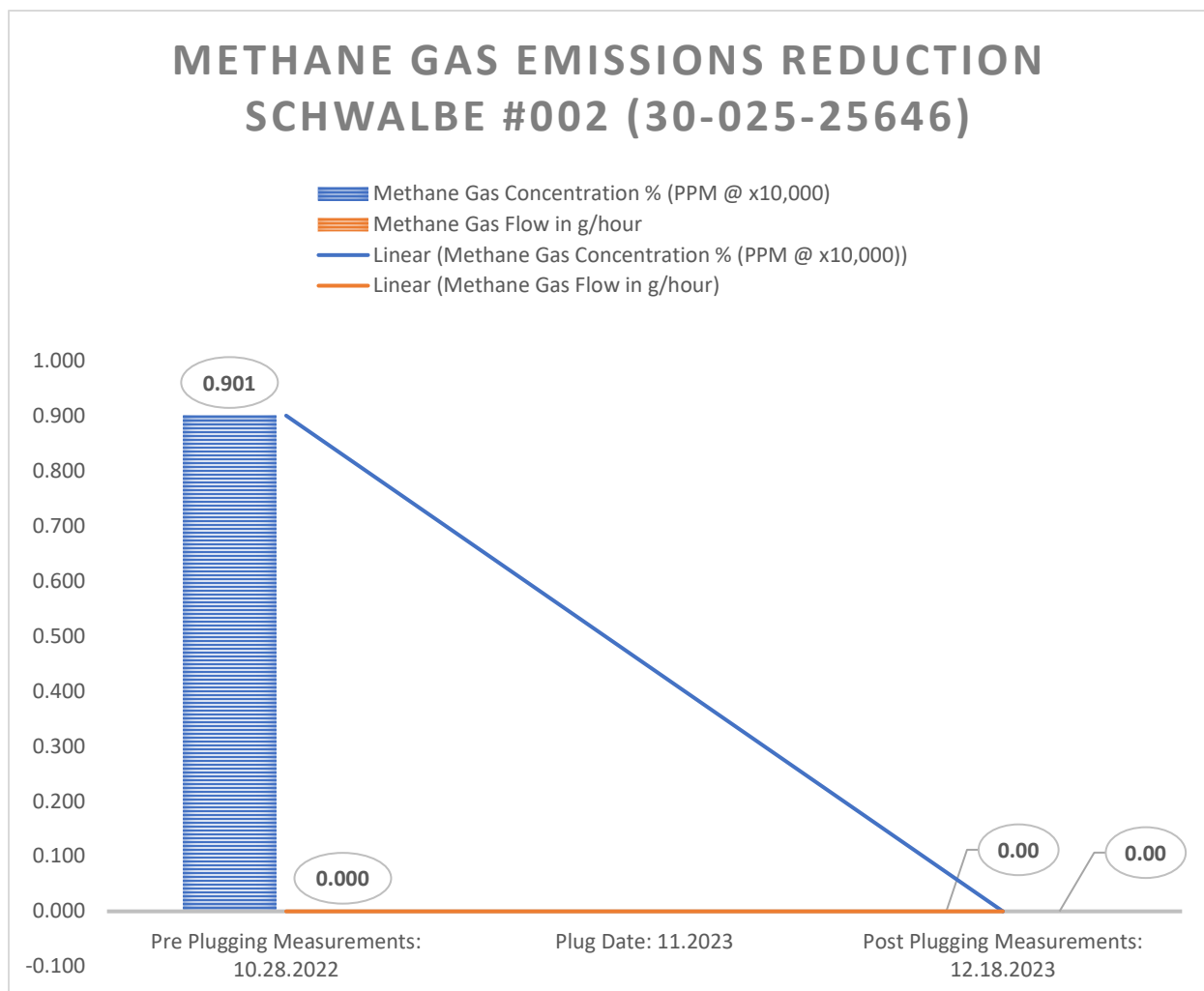
FROM: Curtis Shuck, WDNM

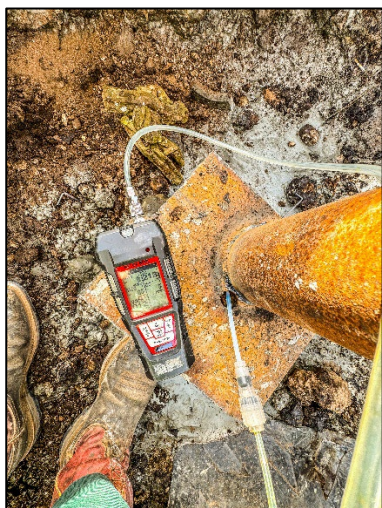
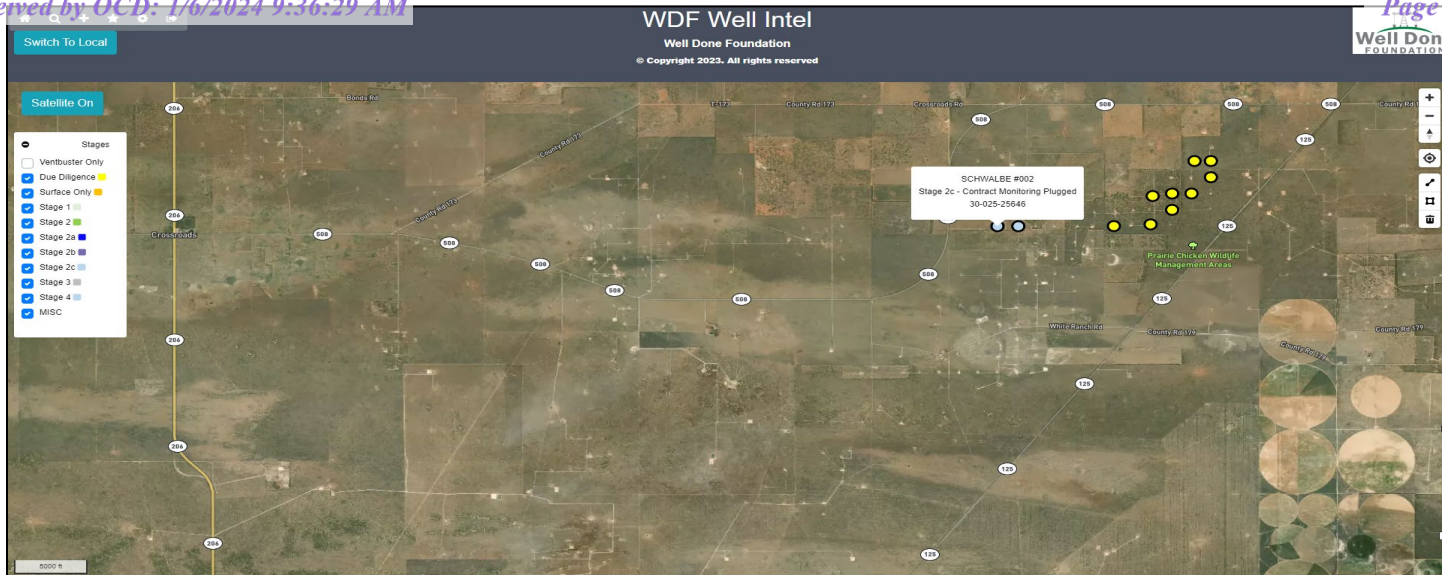
DATE: December 31, 2023

RE: Schwalbe #002 (30-025-25646) Post Plugging Methane Emission Reduction Report

### MEMORANDUM

Well Done New Mexico LLC performed Post Plugging Orphan Well Methane Emission Testing, Gas Sampling & Analysis on the Schwalbe #002 (30-025-25646) on December 18, 2023. The following are the conclusions:



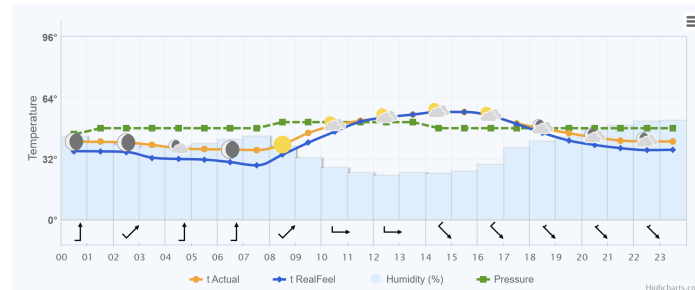


<b>LABORATORY SERVICES</b>		www.perrinlabs.com	
575.397.3713 2000 W Main Rd. Hobbs NM 88240			
19611G	Schwalbe 002 POST PLUG	Schwalbe 002 POST PLUG	
Sample Point Code	Sample Point Name	Sample Point Location	
Laboratory Services		2023081620	BAG
Source Laboratory	Lab File No	Container Identity	CES - Spot
USA	USA	USA	New Mexico
District	Area Name	Field Name	Facility Name
Dec 18, 2023 14:40	Dec 1, 2023	Dec 20, 2023 09:17	Dec 20, 2023
Date Sampled	Date Effective	Date Received	Date Reported
System Administrator			
Ambient Temp (°F)	Flow Rate (Mcf)	Analyst	Press PSI @ Temp °F
Well Done Foundation		NG	
Operator		Lab Source Description	
Component	Normalized Mol %	Un-Normalized Mol %	GPM
H2S (H2S)	0.0000	0	
Nitrogen (N2)	98.6090	98.609	
CO2 (CO2)	0.1840	0.184	
Methane (C1)	0.0000	0	
Ethane (C2)	0.0310	0.031	0.0080
Propane (C3)	0.0360	0.036	0.0100
I-Butane (IC4)	0.0110	0.011	0.0040
N-Butane (NC4)	0.0560	0.056	0.0180
I-Pentane (IC5)	0.0550	0.055	0.0200
N-Pentane (NC5)	0.0870	0.087	0.0320
Hexanes Plus (C6+)	0.9310	0.931	0.4040
TOTAL	100.0000	100.0000	0.4960
Gross Heating Values (Real, BTU/ft³)			
14.696 PSI @ 60.00 °F 14.73 PSI @ 60.00 °F			
Dry Saturated Dry Saturated			
57.3 57.2 57.4 57.3			
Calculated Total Sample Properties			
GPA2145-16 *Calculated at Contract Conditions			
Relative Density Real 0.9922			
Relative Density Ideal 0.9922			
Molecular Weight 28.7389			
C6+ Group Properties			
Assumed Composition			
C6 - 60.000% C7 - 30.000% C8 - 10.000%			
Field H2S 0 PPM			
PROTEND STATUS:			
Passed By Validator on Dec 20, 2023			
DATA SOURCE: Imported			
PASSED BY VALIDATOR REASON:			
First sample taken @ this point, composition looks reasonable			
VALIDATOR:			
Dustin Armstrong			
VALIDATOR COMMENTS:			
OK			
Analyzer Information			
Device Type:	Gas Chromatograph	Device Make:	Shimadzu
Device Model:	GC-2014	Last Cal Date:	Dec 18, 2023
Source	Date	Notes	
Dustin Armstrong	Dec 20, 2023	4:37 pm Methane = 0 ppm	

December 18, 2023

	Atmospheric conditions and temperature °F	RealFeel °F	Atmospheric pressure inHg	Wind speed mph	Humidity
Night	☾ +41°	+36°	26.5	▼ N 9.6	64%
Morning	☀ +36°	+28°	26.5	▼ N 8.7	69%
Day	☁ +55°	+55°	26.6	▼ SE 8.9	39%
Evening	☾ +45°	+41°	26.5	▼ SE 7.2	68%

Hourly forecast for 18.12.2023





19611G	Schwalbe 002 POST PLUG	Schwalbe 002 POST PLUG	
Sample Point Code	Sample Point Name	Sample Point Location	
Laboratory Services	2023081620	BAG	CES - Spot
Source Laboratory	Lab File No	Container Identity	Sampler
USA	USA	USA	New Mexico
District	Area Name	Field Name	Facility Name
Dec 18, 2023 14:40	Dec 1, 2023	Dec 20, 2023 09:17	Dec 20, 2023
Date Sampled	Date Effective	Date Received	Date Reported
System Administrator			
Ambient Temp (°F)	Flow Rate (Mcf)	Analyst	Press PSI @ Temp °F Source Conditions
Well Done Foundation	NG		
Operator	Lab Source Description		

Component	Normalized Mol %	Un-Normalized Mol %	GPM
H2S (H2S)	0.0000	0	
Nitrogen (N2)	98.6090	98.609	
CO2 (CO2)	0.1840	0.184	
Methane (C1)	0.0000	0	
Ethane (C2)	0.0310	0.031	0.0080
Propane (C3)	0.0360	0.036	0.0100
I-Butane (IC4)	0.0110	0.011	0.0040
N-Butane (NC4)	0.0560	0.056	0.0180
I-Pentane (IC5)	0.0550	0.055	0.0200
N-Pentane (NC5)	0.0870	0.087	0.0320
Hexanes Plus (C6+)	0.9310	0.931	0.4040
TOTAL	100.0000	100.0000	0.4960

Method(s): Gas C6+ - GPA 2261, Extended Gas - GPA 2286, Calculations - GPA 2172

Analyzer Information			
Device Type:	Gas Chromatograph	Device Make:	Shimadzu
Device Model:	GC-2014	Last Cal Date:	Dec 18, 2023

Gross Heating Values (Real, BTU/ft <sup>3</sup> )			
14.696 PSI @ 60.00 Å°F		14.73 PSI @ 60.00 Å°F	
Dry	Saturated	Dry	Saturated
57.3	57.2	57.4	57.3
Calculated Total Sample Properties			
GPA2145-16 *Calculated at Contract Conditions			
Relative Density Real		Relative Density Ideal	
0.9922		0.9922	
Molecular Weight			
28.7389			
C6+ Group Properties			
Assumed Composition			
C6 - 60.000%	C7 - 30.000%	C8 - 10.000%	
Field H2S			
0 PPM			

## PROTREND STATUS:

Passed By Validator on Dec 20, 2023

## DATA SOURCE:

Imported

## PASSED BY VALIDATOR REASON:

First sample taken @ this point, composition looks reasonable

## VALIDATOR:

Dustin Armstrong

## VALIDATOR COMMENTS:

OK

Source	Date	Notes
Dustin Armstrong	Dec 20, 2023 4:37 pm	Methane = 0 ppm

**District I**  
1625 N. French Dr., Hobbs, NM 88240  
Phone:(575) 393-6161 Fax:(575) 393-0720  
**District II**  
811 S. First St., Artesia, NM 88210  
Phone:(575) 748-1283 Fax:(575) 748-9720  
**District III**  
1000 Rio Brazos Rd., Aztec, NM 87410  
Phone:(505) 334-6178 Fax:(505) 334-6170  
**District IV**  
1220 S. St Francis Dr., Santa Fe, NM 87505  
Phone:(505) 476-3470 Fax:(505) 476-3462

**State of New Mexico**  
**Energy, Minerals and Natural Resources**  
**Oil Conservation Division**  
**1220 S. St Francis Dr.**  
**Santa Fe, NM 87505**

DEFINITIONS

Action 300583

DEFINITIONS

Operator: ROBINSON OIL INC P.O. Box 1829 Eunice, NM 88231	OGRID: 37636
	Action Number: 300583
	Action Type: [UF-OMA] Post-Plug Methane Monitoring (UF-OMA-MMB)

DEFINITIONS

The Orphan Well Mitigation Activity (OMA) forms are a subset of the OCD's forms exclusively designed for activities related to State of New Mexico's contracted plugging and reclamation activities. Specifically, these forms are used for orphan wells or associated facilities which are in a "Reclamation Fund Approved" status. This status represents wells or facilities where the OCD has acquired a hearing order allowing the OCD to perform plugging or reclamation on wells and associated facilities that no longer have a viable operator to perform the necessary work. These forms are not to be utilized for any other purpose.

**District I**  
1625 N. French Dr., Hobbs, NM 88240  
Phone:(575) 393-6161 Fax:(575) 393-0720  
**District II**  
811 S. First St., Artesia, NM 88210  
Phone:(575) 748-1283 Fax:(575) 748-9720  
**District III**  
1000 Rio Brazos Rd., Aztec, NM 87410  
Phone:(505) 334-6178 Fax:(505) 334-6170  
**District IV**  
1220 S. St Francis Dr., Santa Fe, NM 87505  
Phone:(505) 476-3470 Fax:(505) 476-3462

**State of New Mexico**  
**Energy, Minerals and Natural Resources**  
**Oil Conservation Division**  
**1220 S. St Francis Dr.**  
**Santa Fe, NM 87505**

QUESTIONS  
  
Action 300583

QUESTIONS

Operator: ROBINSON OIL INC P.O. Box 1829 Eunice, NM 88231	OGRID: 37636
	Action Number: 300583
	Action Type: [UF-OMA] Post-Plug Methane Monitoring (UF-OMA-MMB)

QUESTIONS

Prerequisites	
[OGRID] Well Operator	[37636] ROBINSON OIL INC
[API] Well Name and Number	[30-025-25646] SCHWALBE #002
Well Status	Reclamation Fund Approved

Monitoring Event Information	
Please answer all the questions in this group.	
Reason For Filing	Post-Plug Methane Monitoring
Date of monitoring	12/18/2023
Latitude	33.51428
Longitude	-103.15589

Monitoring Event Details	
Please answer all the questions in this group.	
Flow rate in cubic meters per day (m³/day)	0.00
Test duration in hours (hr)	1.0
Average flow temperature in degrees Celsius (°C)	13.1
Average gauge flow pressure in kilopascals (kPag)	0.0
Methane concentration in part per million (ppm)	0
Methane emission rate in grams per hour (g/hr)	0.00
Testing Method	Steady State

Monitoring Contractor	
Please answer all the questions in this group.	
Name of monitoring contractor	Well Done New Mexico LLC