



Test Report

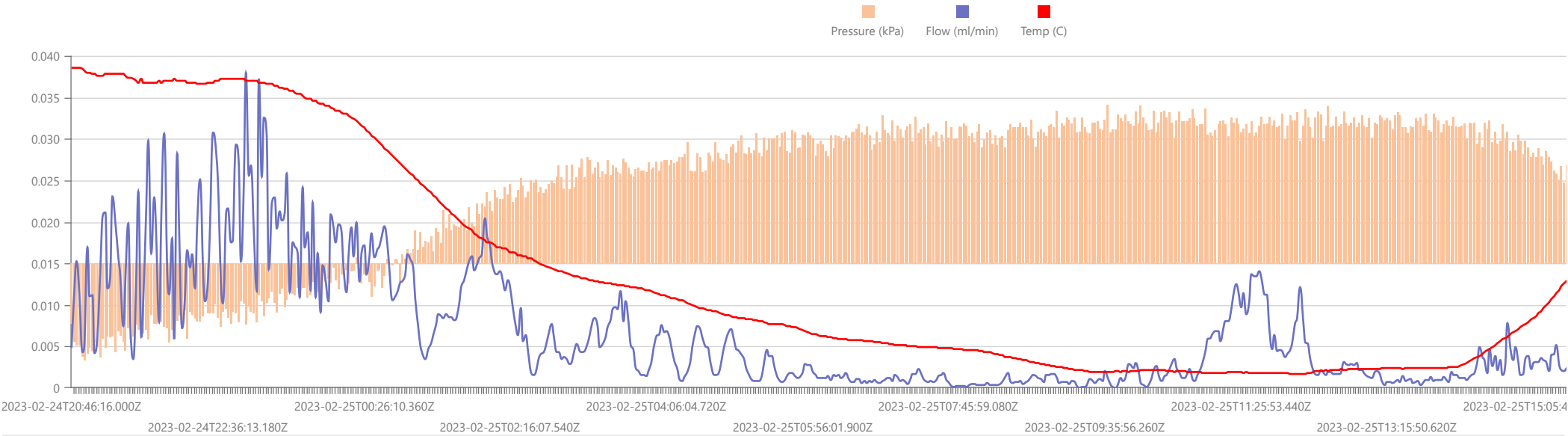
<div>Start Date: Fri Feb 24 2023 20:46:16 GMT+0000 (Coordinated Universal Time)</div> <div>End Date: Sun Feb 26 2023 19:04:03 GMT+0000 (Coordinated Universal Time)</div> <div>Device: VB100-0040</div> <div>Well Licensee: 30-005-60921</div> <div>Well Name: McDermott 001</div> <div>UWI: 30-005-60921</div> <div>Well License Number: 30-005-60921</div> <div>Surface Location: State of NM</div> <div>Bottom Hole Location: Unknown</div>	<div>Test Operator: Sean O. Jacobson</div> <div>Authorized By: State of NM</div> <div>Test Reason: IJJA Pre Plugging</div> <div>Scope Of Work: 12 Hour</div> <div>AFE Number: 52100-000007298</div> <div>GPS: 33.63265,-104.04245</div> <div>Notes: Dorothy in Use, GTG</div> <div>Prepared By: Curtis Shuck, QMS</div>
--	---

Flow / Pressure Test

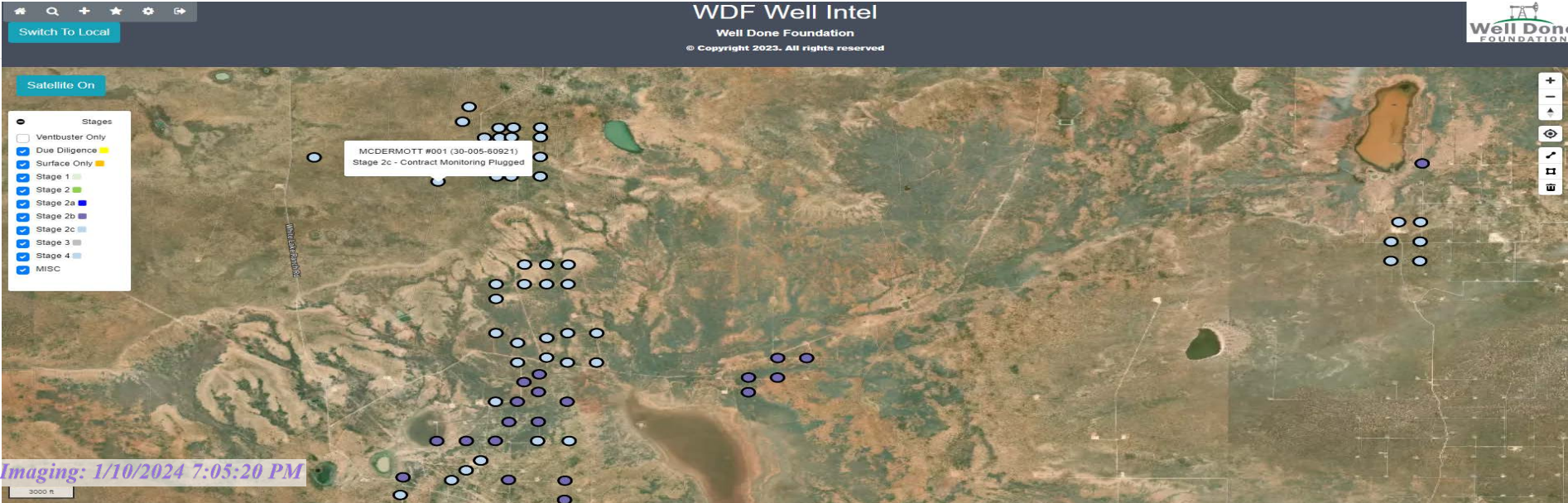
<div>Flow Duration</div> <div>46 hrs 15 minutes</div> <div>Duration</div>	<div>Average Flowrate</div> <div>0.0063</div> <div>m3/d</div>	<div>Average Pressure</div> <div>1.6679</div> <div>kPag</div>	<div>Average Flow Temperature</div> <div>10.0963</div> <div>°C</div>	<div>Average CH4 Mass</div> <div>0.00 g/hr</div>
---	---	---	--	--

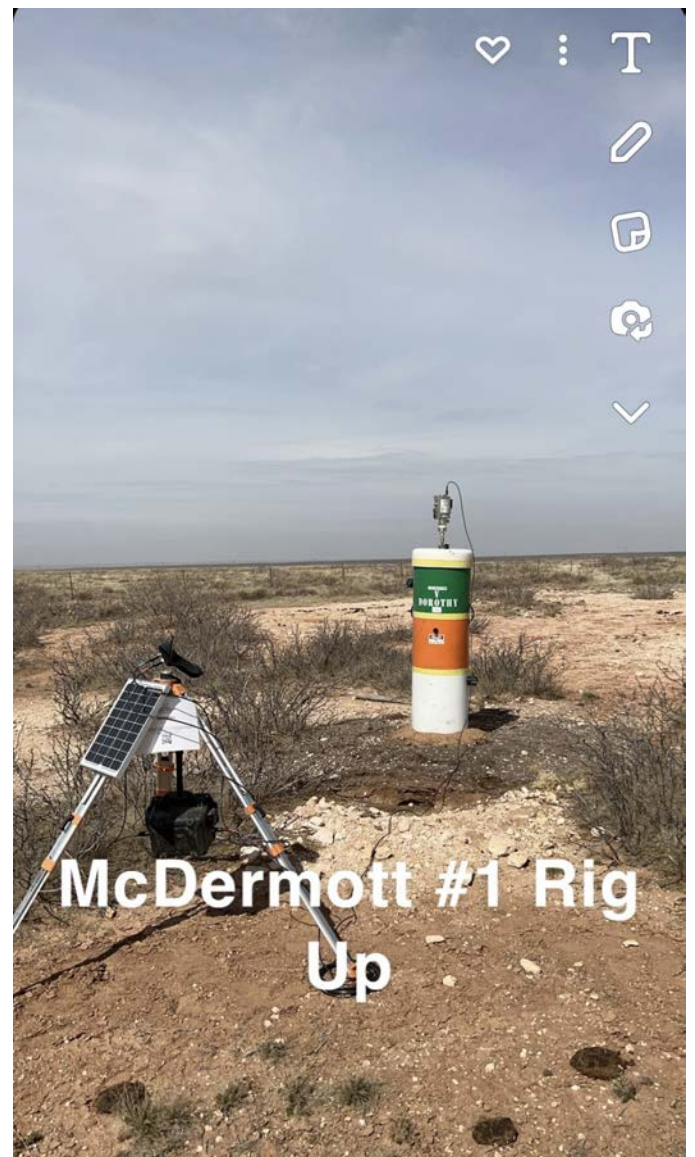
Methane Calculation: 717 grams CH4 per cubic meter (717 g/m³ x 0.0063 m³/day = 4.52 g/day total /24 = 0.19 g/hour x 0.00174 (methane concentration) = **0.00 g/hour CH4**). **Methane, gas** weighs 0.000717 *gram per cubic centimeter* or 0.717 *kilgram per cubic meter*, i.e. density of *methane, gas* is equal to 0.717 kg/m³; at 0°C (32°F or 273.15K) at standard atmospheric pressure. In imperial or US customary measurement system, the density is equal to 0.0448 *pound per cubic foot* [lb/ft³], or 0.0004144 *ounce per cubic inch* [oz/inch³].

Flow / Pressure / Temperature Timeseries



#	Date	Note
1	2023-03-09	Arrived 12:15pm 3/9/2023. Rigged down Toto and flow test. SP VB #16
2	2023-03-08	Arrived 1:05pm 3/8/2023. Rigged up flow test to Toto unit. VB #16
3	2023-02-25	Arrived 11:46am 2/25/2023. Rigged down flow test.
4	2023-02-24	Arrived 1:18pm 2/24/2023. Rigged up Ventbuster #40 for flow testing.
5	2022-12-19	Fgv: measure team 1 was on location took pictures n,e,s,w and a gas sample



C6+ Gas Analysis ReportC6+ Gas Analysis Report

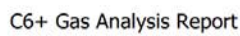
C6+ Gas Analysis Report

C6+ Gas Analysis ReportC6+ Gas Analysis Report

C6+ Gas Analysis Report

C6+ Gas Analysis Report

C6+ Gas Analysis Report

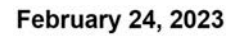


01 02 03 04 05
Released to Image

February 24, 2023

February 24, 2023

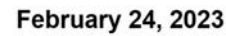
February 24, 2023



February 24, 2023

February 24, 2023

February 24, 2023



February 24, 2023



www.permianls.com
575.397.3713 2609 W Marland Hobbs NM 88240

C6+ Gas Analysis Report

16100G	MeDermort #001 Pre Plug	MeDermort #001	
Sample Point Code	Sample Point Name	Sample Point Location	
Laboratory Services	2023064663	Tedlar Bag	S.O. Jacobson - Spot
Source Laboratory	Lab File No	Container Identity	Sampler
USA	USA	USA	New Mexico
District	Area Name	Field Name	Facility Name
Feb 24, 2023 12:50	Feb 24, 2023 12:50	Feb 27, 2023 10:56	Mar 1, 2023
Date Sampled	Date Effective	Date Received	Date Reported
Torrance			
Ambient Temp (°F)	Flow Rate (Mcf)	Analyst	Press PSI @ Temp °F Source Conditions
Well Done Foundation		NG	
Operator		Lab Source Description	

Component	Normalized Mol %	Un-Normalized Mol %	GPM
H2S (H2S)	0.0000	0	
Nitrogen (N2)	98.7480	98.74891	
CO2 (CO2)	0.1300	0.13003	
Methane (C1)	0.1740	0.17406	
Ethane (C2)	0.2510	0.2509	0.0670
Propane (C3)	0.2100	0.2095	0.0580
I-Butane (IC4)	0.0370	0.03668	0.0120
N-Butane (NC4)	0.0780	0.07773	0.0250
I-Pentane (IC5)	0.0350	0.03533	0.0130
N-Pentane (NC5)	0.0250	0.02487	0.0090
Hexanes Plus (C6+)	0.3120	0.31199	0.1350
TOTAL	100.0000	100.0000	0.3190

Method(s): Gas C6+ - GPA 2261, Extended Gas - GPA 2286, Calculations - GPA 2172

Analyzer Information			
Device Type:	Gas Chromatograph	Device Make:	Shimadzu
Device Model:	GC-2014	Last Cal Date:	Feb 13, 2023

Gross Heating Values (Real, BTU/ft³)			
14.696 PSI @ 60.00 Å°F		14.73 PSI @ 60.00 Å°F	
Dry	Saturated	Dry	Saturated
33.7	34.00	33.8	34.1

Calculated Total Sample Properties	
GPA2145-16 *Calculated at Contract Conditions	
Relative Density Real	Relative Density Ideal
0.9777	0.9777
Molecular Weight	
28.3168	

C6+ Group Properties		
Assumed Composition		
C6 - 60.000%	C7 - 30.000%	C8 - 10.000%

Field H2S
0 PPM

PROTREND STATUS: Passed By Validator on Mar 3, 2023
DATA SOURCE: Imported

PASSED BY VALIDATOR REASON:
Close enough to be considered reasonable.

VALIDATOR:
Luis Cano
VALIDATOR COMMENTS:
OK

Source	Date	Notes
Luis Cano	Mar 3, 2023 7:21 am	Methane: 1,740 PPM

District I
1625 N. French Dr., Hobbs, NM 88240
Phone:(575) 393-6161 Fax:(575) 393-0720
District II
811 S. First St., Artesia, NM 88210
Phone:(575) 748-1283 Fax:(575) 748-9720
District III
1000 Rio Brazos Rd., Aztec, NM 87410
Phone:(505) 334-6178 Fax:(505) 334-6170
District IV
1220 S. St Francis Dr., Santa Fe, NM 87505
Phone:(505) 476-3470 Fax:(505) 476-3462

State of New Mexico
Energy, Minerals and Natural Resources
Oil Conservation Division
1220 S. St Francis Dr.
Santa Fe, NM 87505

DEFINITIONS

Action 302399

DEFINITIONS

Operator: CANYON E & P COMPANY 251 O'Connor Ridge Blvd. Irving, TX 75038	OGRID: 269864
	Action Number: 302399
	Action Type: [UF-OMA] Pre-Plug Methane Monitoring (UF-OMA-MMA)

DEFINITIONS

The Orphan Well Mitigation Activity (OMA) forms are a subset of the OCD's forms exclusively designed for activities related to State of New Mexico's contracted plugging and reclamation activities. Specifically, these forms are used for orphan wells or associated facilities which are in a "Reclamation Fund Approved" status. This status represents wells or facilities where the OCD has acquired a hearing order allowing the OCD to perform plugging or reclamation on wells and associated facilities that no longer have a viable operator to perform the necessary work. These forms are not to be utilized for any other purpose.

District I

1625 N. French Dr., Hobbs, NM 88240
Phone:(575) 393-6161 Fax:(575) 393-0720

District II

811 S. First St., Artesia, NM 88210
Phone:(575) 748-1283 Fax:(575) 748-9720

District III

1000 Rio Brazos Rd., Aztec, NM 87410
Phone:(505) 334-6178 Fax:(505) 334-6170

District IV

1220 S. St Francis Dr., Santa Fe, NM 87505
Phone:(505) 476-3470 Fax:(505) 476-3462

State of New Mexico
Energy, Minerals and Natural Resources
Oil Conservation Division
1220 S. St Francis Dr.
Santa Fe, NM 87505

QUESTIONS

Action 302399

QUESTIONS

Operator: CANYON E & P COMPANY 251 O'Connor Ridge Blvd. Irving, TX 75038	OGRID: 269864
	Action Number: 302399
	Action Type: [UF-OMA] Pre-Plug Methane Monitoring (UF-OMA-MMA)

QUESTIONS

Prerequisites	
[OGRID] Well Operator	[269864] CANYON E & P COMPANY
[API] Well Name and Number	[30-005-60921] MCDERMOTT #001
Well Status	Reclamation Fund Approved

Monitoring Event Information*Please answer all the questions in this group.*

Reason For Filing	Pre-Plug Methane Monitoring
Date of monitoring	02/24/2023
Latitude	33.63265
Longitude	-104.04245

Monitoring Event Details*Please answer all the questions in this group.*

Flow rate in cubic meters per day (m³/day)	0.01
Test duration in hours (hr)	46.2
Average flow temperature in degrees Celsius (°C)	10.1
Average gauge flow pressure in kilopascals (kPag)	1.6
Methane concentration in part per million (ppm)	1,740
Methane emission rate in grams per hour (g/hr)	0.00
Testing Method	Steady State

Monitoring Contractor*Please answer all the questions in this group.*

Name of monitoring contractor	Well Done New Mexico LLC
-------------------------------	--------------------------