



333 Main Street Shelby, Montana 59474 / P.O. Box 10640 Bozeman, MT 59179

(406) 460-0903

TO: Jim Griswold, OCD

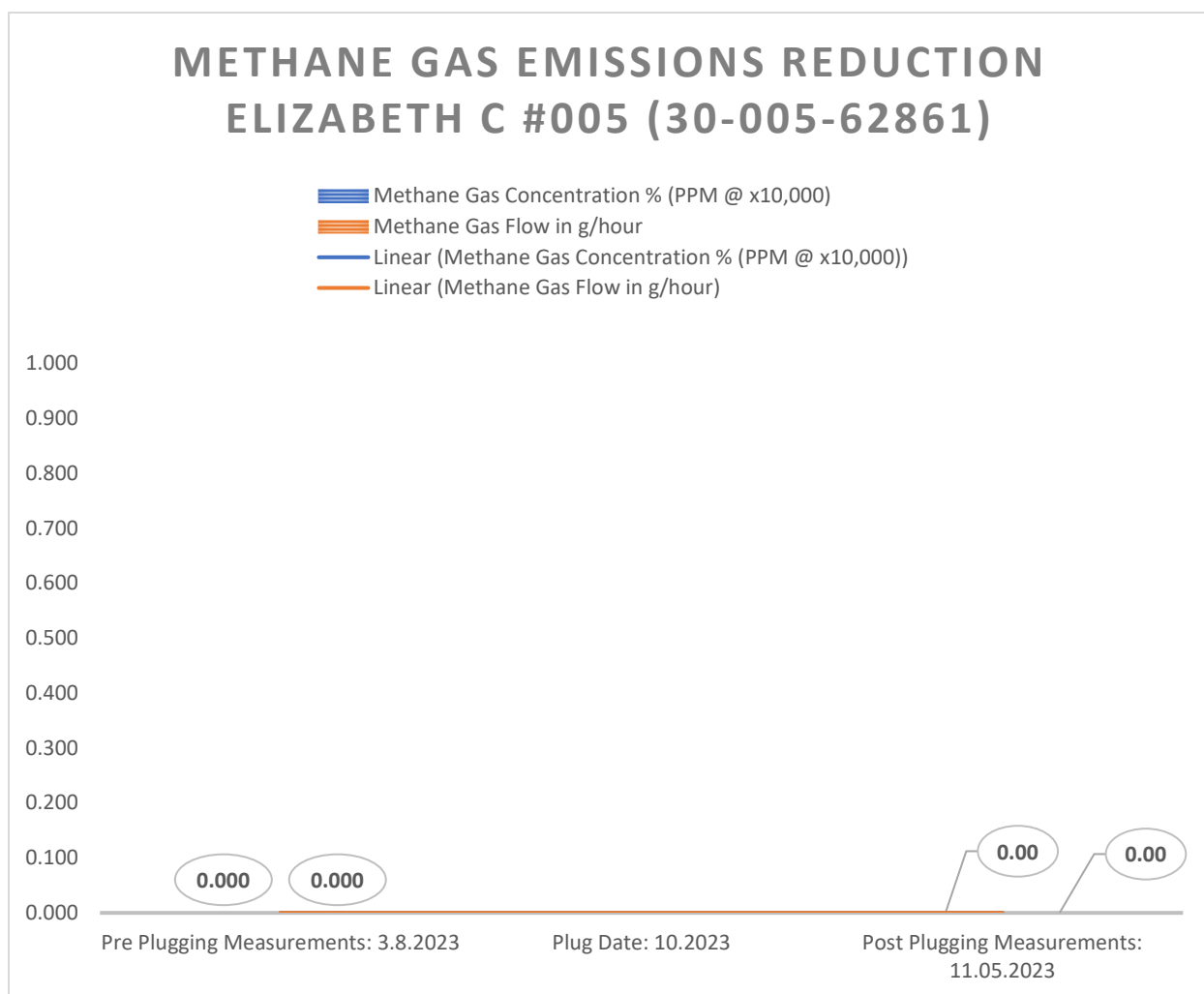
FROM: Curtis Shuck, WDNM

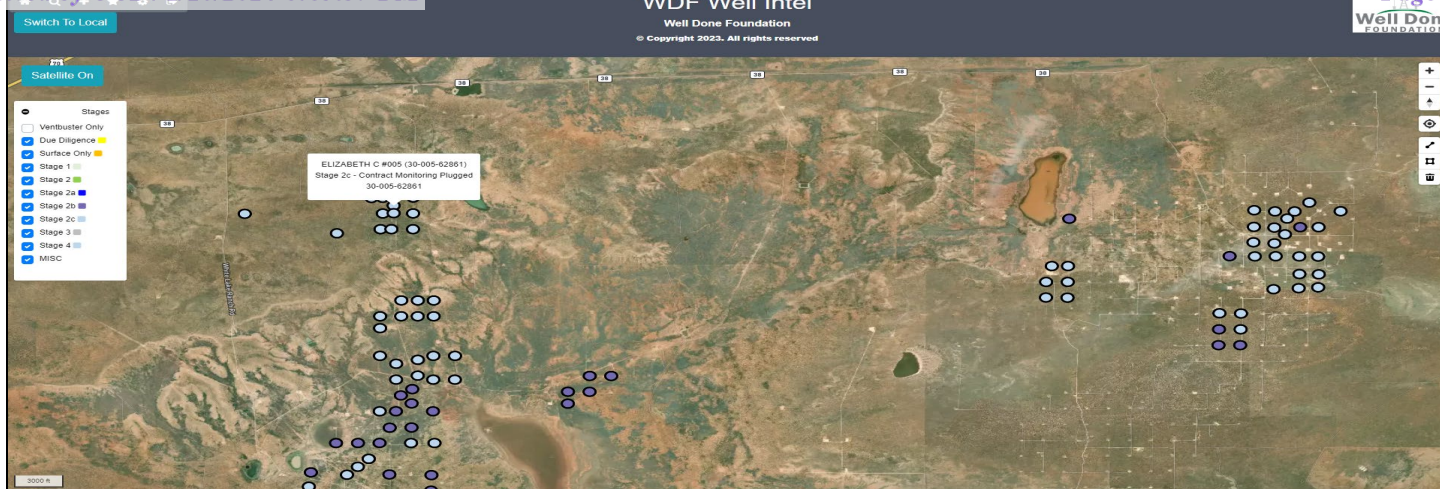
DATE: December 31, 2023


RE: Elizabeth C #005 (30-005-62861) Post Plugging Methane Emission Reduction Report

### MEMORANDUM

Well Done New Mexico LLC performed Post Plugging Orphan Well Methane Emission Testing, Gas Sampling & Analysis on the Elizabeth C #005 (30-005-62861) on November 5, 2023. The following are the conclusions:





 <b>LABORATORY ANALYTICAL</b> <small>Proven Performance</small>	www.pentairlabs.com GTS-20P7 3T-V3    2020 © Pentair    HXSD-NEB 00040		<b>C6+ Gas Analysis Report</b>
	16235G	Elizabeth C. #005 Post Log	Elizabeth C. #005
Sample Point Code	Sample Point Name		Sample Point Location
Laboratory Services		202307863S	BAG
Source Laboratory	Lab File No.		Container Identity
USA	USA	USA	New Mexico
District	Area Name	Field Name	Facility Name
Nov 5, 2023 17:15	Nov 5, 2023 17:15	Nov 6, 2023 10:33	Nov 20, 2023
Date Sampled	Date Effective	Date Received	Date Reported
Luis			
Ambient Temp (°F)	Flow Rate (Hcf)	Anayst	
		Press PSI @ Temp °F Source Conditions	
Well Done Foundation		NG	
Operator		Lab Source Description	

Component	Normalized Mol %	Un-Normalized Mol %	GPM	
H2S (H2S)	0.0000	0		<b>Gross Heating Values (Real, BTU/lb†)</b>  14.896 P52 @ 60.00 kPa      14.732 P52 @ 60.00 kPa Dry                          Saturated                          Dry                          Saturated 1.8                          2.7                          1.8                          2.7
Nitrogen (N2)	99.9210	99.92174		<b>Calculated Total Sample Properties</b> GP42145-16 "Calculated at Contract Conditions"  Relative Density Real                          Relative Density Ideal 0.9652                          0.9653 Molecular Weight 28.0437
CO2 (CO2)	0.0439	0.04261		
Methane (C1)	0.0000	0		<b>C6+ Group Properties</b> Assumed Composition C6 - 60.000%      C7 - 30.000%      C8 - 10.000%  Field H2S 0 PPM
Ethane (C2)	0.0000	0	0.0000	
Propane (C3)	0.0000	0	0.0000	
i-Butane (iC4)	0.0000	0	0.0000	
n-Butane (nC4)	0.0000	0	0.0000	
i-Pentane (iC5)	0.0000	0	0.0000	
n-Pentane (nC5)	0.0000	0	0.0000	
Hexanes Plus (C6+)	0.0360	0.03565	0.0160	
TOTAL	100.0000	100.0000	0.0160	

Method(s): Gas C# + GPR ZMS1, Extended Gas - GPA Z206, Calculations - GPA Z172



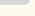

  

Analyzer Information	
Device Type: Gas Chromatograph	Device Make: Shimadzu
Device Model: GC-2014	Last Cal Date: Nov 20, 2023

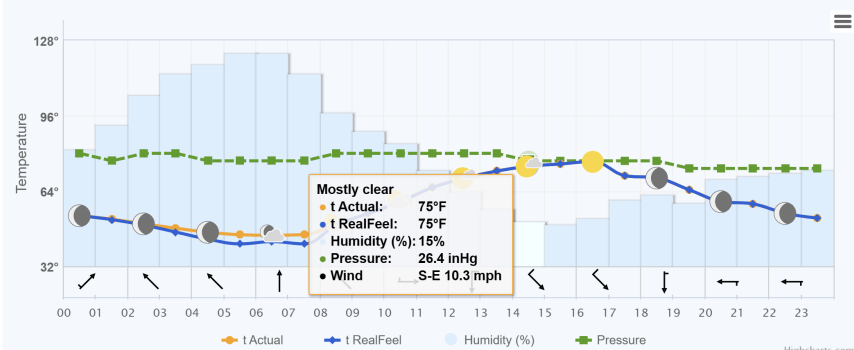
  

<b>POTREND STATUS:</b> Passed By Validator on Nov 22, 2023      Imported	<b>DATA SOURCE:</b> PASSED BY VALIDATOR REASON: Close enough to be considered reasonable.
<b>VALIDATOR:</b> Ashley Russell <b>VALIDATOR COMMENTS:</b> OK	

November 05, 2023

	Atmospheric conditions and temperature °F	RealFeel °F	Atmospheric pressure inHg	Wind speed mph	Humidity
Night	 +52°	+52°	26.4	▼ N 6.3	47%
Morning	 +45°	+41°	26.4	▲ NW 4.3	64%
Day	 +73°	+73°	26.5	▼ SE 7.2	19%
Evening	 +64°	+64°	26.3	▼ SW 5.1	21%

Hourly forecast for 05.11.2023







**District I**  
1625 N. French Dr., Hobbs, NM 88240  
Phone:(575) 393-6161 Fax:(575) 393-0720  
**District II**  
811 S. First St., Artesia, NM 88210  
Phone:(575) 748-1283 Fax:(575) 748-9720  
**District III**  
1000 Rio Brazos Rd., Aztec, NM 87410  
Phone:(505) 334-6178 Fax:(505) 334-6170  
**District IV**  
1220 S. St Francis Dr., Santa Fe, NM 87505  
Phone:(505) 476-3470 Fax:(505) 476-3462

**State of New Mexico**  
**Energy, Minerals and Natural Resources**  
**Oil Conservation Division**  
**1220 S. St Francis Dr.**  
**Santa Fe, NM 87505**

DEFINITIONS

Action 302396

DEFINITIONS

Operator: CANYON E & P COMPANY 251 O'Connor Ridge Blvd. Irving, TX 75038	OGRID: 269864
	Action Number: 302396
	Action Type: [UF-OMA] Post-Plug Methane Monitoring (UF-OMA-MMB)

DEFINITIONS

The Orphan Well Mitigation Activity (OMA) forms are a subset of the OCD's forms exclusively designed for activities related to State of New Mexico's contracted plugging and reclamation activities. Specifically, these forms are used for orphan wells or associated facilities which are in a "Reclamation Fund Approved" status. This status represents wells or facilities where the OCD has acquired a hearing order allowing the OCD to perform plugging or reclamation on wells and associated facilities that no longer have a viable operator to perform the necessary work. These forms are not to be utilized for any other purpose.

**District I**

1625 N. French Dr., Hobbs, NM 88240  
Phone:(575) 393-6161 Fax:(575) 393-0720

**District II**

811 S. First St., Artesia, NM 88210  
Phone:(575) 748-1283 Fax:(575) 748-9720

**District III**

1000 Rio Brazos Rd., Aztec, NM 87410  
Phone:(505) 334-6178 Fax:(505) 334-6170

**District IV**

1220 S. St Francis Dr., Santa Fe, NM 87505  
Phone:(505) 476-3470 Fax:(505) 476-3462

**State of New Mexico**  
**Energy, Minerals and Natural Resources**  
**Oil Conservation Division**  
**1220 S. St Francis Dr.**  
**Santa Fe, NM 87505**

QUESTIONS

Action 302396

**QUESTIONS**

Operator: CANYON E & P COMPANY 251 O'Connor Ridge Blvd. Irving, TX 75038	OGRID: 269864
	Action Number: 302396
	Action Type: [UF-OMA] Post-Plug Methane Monitoring (UF-OMA-MMB)

**QUESTIONS**

<b>Prerequisites</b>	
[OGRID] Well Operator	[269864] CANYON E & P COMPANY
[API] Well Name and Number	[30-005-62861] ELIZABETH C #005
Well Status	Plugged (not released)

**Monitoring Event Information***Please answer all the questions in this group.*

Reason For Filing	Post-Plug Methane Monitoring
Date of monitoring	11/05/2023
Latitude	33.63908
Longitude	-104.03117

**Monitoring Event Details***Please answer all the questions in this group.*

Flow rate in cubic meters per day (m³/day)	0.00
Test duration in hours (hr)	1.0
Average flow temperature in degrees Celsius (°C)	22.1
Average gauge flow pressure in kilopascals (kPag)	0.0
Methane concentration in part per million (ppm)	0
Methane emission rate in grams per hour (g/hr)	0.00
Testing Method	Steady State

**Monitoring Contractor***Please answer all the questions in this group.*

Name of monitoring contractor	Well Done New Mexico LLC
-------------------------------	--------------------------