

Submit 1 Copy To Appropriate District Office  
 District I – (575) 393-6161  
 1625 N. French Dr., Hobbs, NM 88240  
 District II – (575) 748-1283  
 811 S. First St., Artesia, NM 88210  
 District III – (505) 334-6178  
 1000 Rio Brazos Rd., Aztec, NM 87410  
 District IV – (505) 476-3460  
 1220 S. St. Francis Dr., Santa Fe, NM 87505

State of New Mexico  
 Energy, Minerals and Natural Resources

Form C-103  
 Revised July 18, 2013

OIL CONSERVATION DIVISION  
 1220 South St. Francis Dr.  
 Santa Fe, NM 87505

<b>SUNDRY NOTICES AND REPORTS ON WELLS</b> (DO NOT USE THIS FORM FOR PROPOSALS TO DRILL OR TO DEEPEN OR PLUG BACK TO A DIFFERENT RESERVOIR. USE "APPLICATION FOR PERMIT" (FORM C-101) FOR SUCH PROPOSALS.)		WELL API NO. 30-025-28664
1. Type of Well: Oil Well <input checked="" type="checkbox"/> Gas Well <input type="checkbox"/> Other <input type="checkbox"/>		5. Indicate Type of Lease STATE <input checked="" type="checkbox"/> FEE <input type="checkbox"/>
2. Name of Operator Energy Acumen LLC		6. State Oil & Gas Lease No.
3. Address of Operator 10103 Gutierrez Rd NE, Albuquerque, NM 87111		7. Lease Name or Unit Agreement Name Robert
4. Well Location Unit Letter: M : 990 feet from the S line and 660 feet from the W line Section 21 Township 21S Range 37E NMPM County: Lea		8. Well Number: 001
11. Elevation (Show whether DR, RKB, RT, GR, etc.)		9. OGRID Number: 373817
10. Pool name or Wildcat HARE;SAN ANDRES (GAS)		

12. Check Appropriate Box to Indicate Nature of Notice, Report or Other Data

NOTICE OF INTENTION TO:		SUBSEQUENT REPORT OF:	
PERFORM REMEDIAL WORK <input type="checkbox"/>	PLUG AND ABANDON <input type="checkbox"/>	REMEDIAL WORK <input type="checkbox"/>	ALTERING CASING <input type="checkbox"/>
TEMPORARILY ABANDON <input type="checkbox"/>	CHANGE PLANS <input type="checkbox"/>	COMMENCE DRILLING OPNS. <input type="checkbox"/>	<b>P AND A</b> <input checked="" type="checkbox"/>
PULL OR ALTER CASING <input type="checkbox"/>	MULTIPLE COMPL <input type="checkbox"/>	CASING/CEMENT JOB <input type="checkbox"/>	PNR <input type="checkbox"/>
DOWNHOLE COMMINGLE <input type="checkbox"/>			
CLOSED-LOOP SYSTEM <input type="checkbox"/>			
OTHER: <input type="checkbox"/>		OTHER: <input type="checkbox"/>	

13. Describe proposed or completed operations. (Clearly state all pertinent details, and give pertinent dates, including estimated date of starting any proposed work). SEE RULE 19.15.7.14 NMAC. For Multiple Completions: Attach wellbore diagram of proposed completion or recompletion.

See Plugging Procedure/Events Below

Approved for plugging of well bore only. Liability under bond is retained pending receipt of C-103 (Subsequent Report of Well Plugging) which may be found at OCD Web Page under Forms,

Spud Date:

Rig Release Date:

I hereby certify that the information above is true and complete to the best of my knowledge and belief.

SIGNATURE Ethan Wakefield TITLE: Authorized Representative DATE: 2/1/24

Type or print name: Ethan Wakefield E-mail address: [e.wakefield@dwsrigs.com](mailto:e.wakefield@dwsrigs.com) PHONE: (405)343-7736

**For State Use Only**

APPROVED BY: Kerry Fortner TITLE: Compliance Officer A DATE: 2/26/24  
 Conditions of Approval (if any):

## **Energy Acumen LLC**

### **Plug And Abandonment End Of Well Report**

**Robert #001**

990' FSL & 660' FWL, Section 21, 21S, 37E

Lea County, NM / API 30-025-28664

#### **Work Summary:**

- 1/21/24** Made BLM and NMOCD P&A operations notifications at 9:00 AM MST.
- 1/22/24** Arrived on location. Completed radial check for H2S and other gas. Checked well pressures. R/U cementing services. Pumped 40 bbls of water. Put well on vacuum. R/D cementers. Moved equipment to location. Spot equipment and rig up.
- 1/23/24** Arrived on location. Completed radial check for H2S and other gas. Checked well pressures. L/D 157 3/4" rods. R/D WH. N/U and function test BOP. R/U floor and equipment. L/D tubing hanger. Worked 2-3/8" tubing string. TOOH with 125 joints of tubing. Shut in and secured well for the day.
- 1/24/24** Arrived on location. Held safety meeting. Completed radial check for H2S and other gas. Checked well pressures. Late start due to heavy fog. P/U scraper. RIH and tagged at 3969'. L/D 1 joint. TOOH. L/D scraper. P/U 5.5" CR. TIH and set CR at 4020'. Successfully pressure tested tubing. Sting out of CR. Pumped 100 bbls but did not establish circulation. TOOH. Shut in and secured well for the day.
- 1/25/24** Arrived on location. Held safety meeting. Completed radial check for H2S and other gas. Checked well pressures. TOOH. R/U wireline services. TIH and logged well. POOH. R/D wireline services. Unable to log above 1790' as well would not hole fluid. TIH to CR at 4020'. R/U cementers. Pumped plug #1 from 4020' to 3842'. R/D cementers. L/D 6 joints and TOOH. WOC 4 hours. TIH and tagged plug #1 at 4010'. R/U cementers. Continued pumping plug #1 from

4010' to 3842'. R/D cementers L/D 5 joints and TOOH. WOC overnight. Shut in and secured well.

- 1/26/24** Arrived on location. Held safety meeting. Completed radial check for H2S and other gas. Checked well pressures. TIH and tagged plug #1 at 3780'. R/U cementing services. Pumped mud/gel spacer from 3780' to 3690'. L/D 4 joints. R/U cementing services. Pumped plug #2 from 3690' to 3326'. R/D cementers. L/D 12 joints and TOOH. WOC 4 hours. Completed rig maintenance during WOC. TIH and tagged plug #2 at 3330'. L/D 1 joint and TOOH. Shut in and secured well.
- 1/27/24** Arrived on location. Held safety meeting. Completed radial check for H2S and other gas. Checked well pressures. TIH to 3330'. R/U cementing services. Pumped mud/gel spacer from 3330' to 2634'. L/D tubing. R/U cementing services. Pumped plug #3 from 2637' to 2414'. R/D cementers. L/D 7 joints and TOOH. WOC 4 hours. TIH and tagged plug #3 at 2426'. L/D 1 joint and TOOH. Shut in and secured well.
- 1/28/24** Arrived on location. Held safety meeting. Completed radial check for H2S and other gas. Checked well pressures. R/U wireline services. RIH and logged well from 2419' to surface. R/D wireline services. TIH to 2419'. R/U cementing services. Pumped mud/gel spacer from 2420' to 545'. L/D 60 joints. R/U cementing services. Pumped plug #4 from 544' to 110'. L/D 14 joints. Revers circulate. TOOH. Shut in and secured well.
- 1/29/24** Arrived on location. Held safety meeting. Completed radial check for H2S and other gas. Checked well pressures. R/U wireline services. RIH and tagged at 108'. Perforated at 102'. POOH. R/D wireline. R/U cementing services. Continued pumping plug #4 down casing, into perforations, and out BH valve at surface. R/D cementers. R/D floor and equipment. ND BOP. R/D unit. Prepare to MOL.
- 1/30/24** Arrived on location. Held safety meeting. Completed gas check. Used backhoe to safely expose wellhead. Set up welding unit on location. Performed wellhead cutoff. Removed old wellhead. Cement was at surface in both strings. Welder attached marker per NMOCD regulations. R/U cementing services. Topped off cellar with 32 sx.

**Plug Summary:****Plug #1: (Perforations and San Andres Formation Top, 4,020'-3,780', 40 Sacks Type I/II Cement)**

P/U 5.5" CR. TIH and set CR at 4020'. Successfully pressure tested tubing. Sting out of CR. Pumped 100 bbls but did not establish circulation. TIH to CR at 4020'. R/U cementers. Pumped plug #1 from 4020' to 3842'. R/D cementers. L/D 6 joints and TOO. WOC 4 hours. TIH and tagged plug #1 at 4010'. R/U cementers. Continued pumping plug #1 from 4010' to 3842'. R/D cementers L/D 5 joints and TOO. WOC overnight. TIH and tagged plug #1 at 3780'.

**Plug #2: (Grayburg and Queen Formation Tops, 3,690'-3,330', 41 Sacks Type I/II Cement)**

R/U cementing services. Pumped plug #2 from 3690' to 3326'. R/D cementers. L/D 12 joints and TOO. WOC 4 hours. Completed rig maintenance during WOC. TIH and tagged plug #2 at 3330'.

**Plug #3: (Yates Formation Top, 2,637'-2,426, 25 Sacks Type I/II Cement)**

R/U cementing services. Pumped plug #3 from 2637' to 2414'. R/D cementers. L/D 7 joints and TOO. WOC 4 hours. TIH and tagged plug #3 at 2426'.

**Plug #4: (Surface, 544'-Surface, 153 Sacks Type I/II Cement (0 sx for top off)(additional 32 sx for cellar))**

R/U cementing services. Pumped plug #4 from 544' to 110'. WOC. R/U wireline services. RIH and tagged at 108'. Perforated at 102'. POOH. R/D wireline. R/U cementing services. Continued pumping plug #4 down casing, into perforations, and out BH valve at surface. Removed old wellhead. Cement was at surface in both strings. Welder attached marker per NMOCD regulations. R/U cementing services. Topped off cellar with 32 sx.

## Completed Wellbore Diagram

Energy Acuman LLC

Robert #001

API: 30-025-28664

Lea, New Mexico

### Surface Casing

8.625" 24# @ 495'

OH: 12.25"

### Plug 4

544 feet - Surface

544 foot plug

153 Sacks of Type I/II Cement

32 additional sacks for cellar

### Plug 3

2637 feet - 2426 feet

211 foot plug

25 Sacks of Type I/II Cement

### Plug 2

3690 feet - 3330 feet

360 foot plug

41 Sacks of Type I/II Cement

### Plug 1

4020 feet - 3780 feet

240 foot plug

40 sacks of Type I/II Cement

### Perforations

4133 feet - 4160 feet

### Formation Tops

Yates - 2584 feet

Queen - 3426 feet

Grayburg - 3640 feet

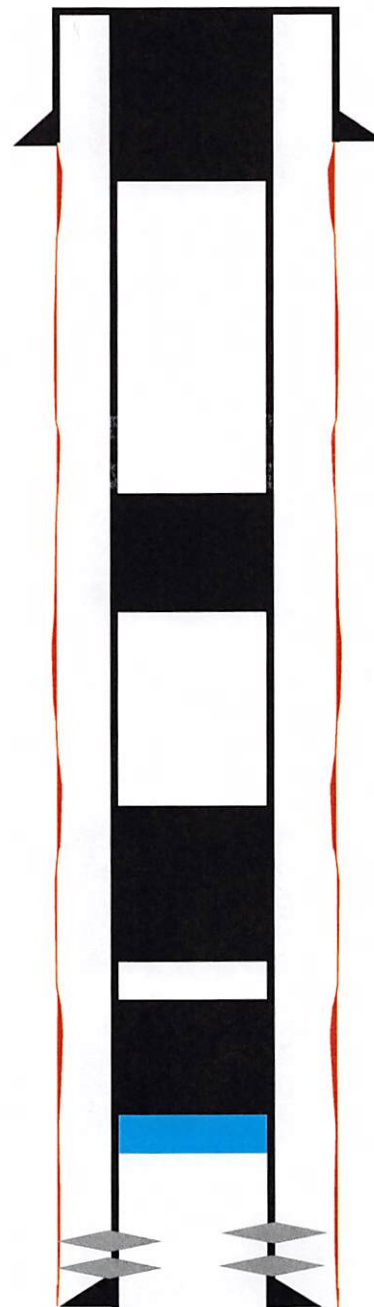
San Andres - 3942 feet

CR at 4020'

### Production Casing

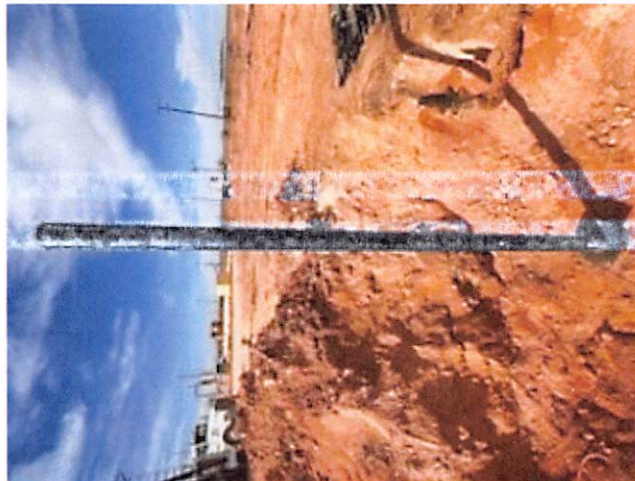
5.5" #15.5 @ 4267'

OH: 7.825"



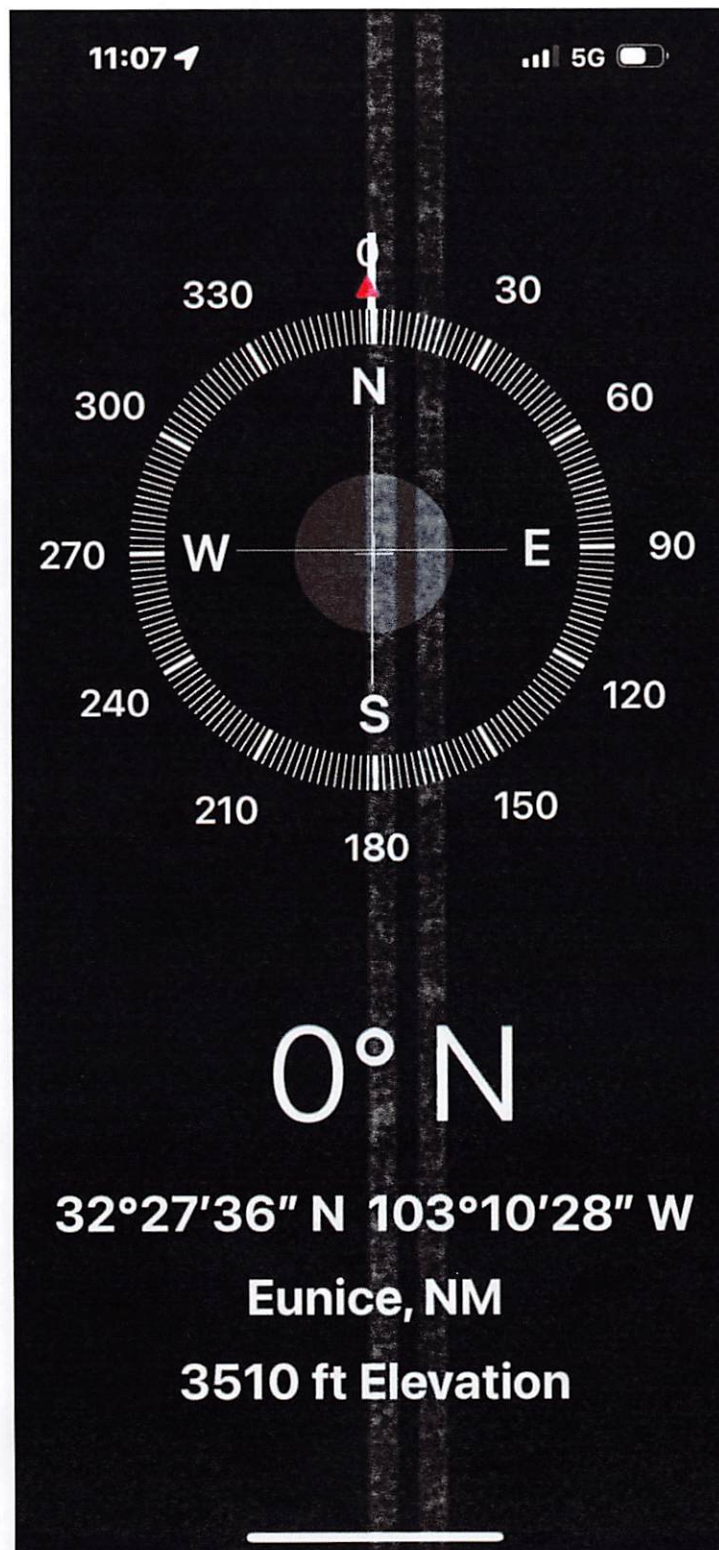












**District I**  
1625 N. French Dr., Hobbs, NM 88240  
Phone:(575) 393-6161 Fax:(575) 393-0720  
**District II**  
811 S. First St., Artesia, NM 88210  
Phone:(575) 748-1283 Fax:(575) 748-9720  
**District III**  
1000 Rio Brazos Rd., Aztec, NM 87410  
Phone:(505) 334-6178 Fax:(505) 334-6170  
**District IV**  
1220 S. St Francis Dr., Santa Fe, NM 87505  
Phone:(505) 476-3470 Fax:(505) 476-3462

**State of New Mexico**  
**Energy, Minerals and Natural Resources**  
**Oil Conservation Division**  
**1220 S. St Francis Dr.**  
**Santa Fe, NM 87505**

COMMENTS  
  
Action 312325

COMMENTS

Operator: Energy Acumen LLC 10103 Gutierrez Rd NE Albuquerque, NM 87111	OGRID: 373817
	Action Number: 312325
	Action Type: [C-103] Sub. Plugging (C-103P)

COMMENTS

Created By	Comment	Comment Date
plmartinez	DATA ENTRY PM.	2/27/2024

**District I**  
1625 N. French Dr., Hobbs, NM 88240  
Phone:(575) 393-6161 Fax:(575) 393-0720  
**District II**  
811 S. First St., Artesia, NM 88210  
Phone:(575) 748-1283 Fax:(575) 748-9720  
**District III**  
1000 Rio Brazos Rd., Aztec, NM 87410  
Phone:(505) 334-6178 Fax:(505) 334-6170  
**District IV**  
1220 S. St Francis Dr., Santa Fe, NM 87505  
Phone:(505) 476-3470 Fax:(505) 476-3462

**State of New Mexico**  
**Energy, Minerals and Natural Resources**  
**Oil Conservation Division**  
**1220 S. St Francis Dr.**  
**Santa Fe, NM 87505**

CONDITIONS  
  
Action 312325

CONDITIONS

Operator: Energy Acumen LLC 10103 Gutierrez Rd NE Albuquerque, NM 87111	OGRID: 373817
	Action Number: 312325
	Action Type: [C-103] Sub. Plugging (C-103P)

CONDITIONS

Created By	Condition	Condition Date
kfortner	Need C103Q and marker photo to release	2/26/2024