

District I  
1625 N. French Dr., Hobbs, NM 88240  
Phone: (575) 393-6161 Fax: (575) 393-0720  
District II  
811 S. First St., Artesia, NM 88210  
Phone: (575) 748-1283 Fax: (575) 748-9720  
District III  
1000 Rio Brazos Road, Aztec, NM 87410  
Phone: (505) 334-6178 Fax: (505) 334-6170  
District IV  
1220 S. St. Francis Dr., Santa Fe, NM 87505  
Phone: (505) 476-3460 Fax: (505) 476-3462

State of New Mexico  
Energy, Minerals & Natural Resources  
Department  
OIL CONSERVATION DIVISION  
1220 South St. Francis Dr.  
Santa Fe, NM 87505

FORM C-102

Revised August 1, 2011

Submit one copy to appropriate  
District Office

AMENDED REPORT

Change pool

AS-DRILLED PLAT

<sup>1</sup> API Number <b>30-025-48849</b>		<sup>2</sup> Pool Code <b>98387</b>		<sup>3</sup> Pool Name <b>WC-025 G-09 S253229J; LWR WOLFCAMP</b>	
<sup>4</sup> Property Code <b>330803</b>		<sup>5</sup> Property Name <b>JEFE 29 FED COM</b>			<sup>6</sup> Well Number <b>759H</b>
<sup>7</sup> OGRID No. <b>7377</b>		<sup>8</sup> Operator Name <b>EOG RESOURCES, INC.</b>			<sup>9</sup> Elevation <b>3351'</b>

<sup>10</sup>Surface Location

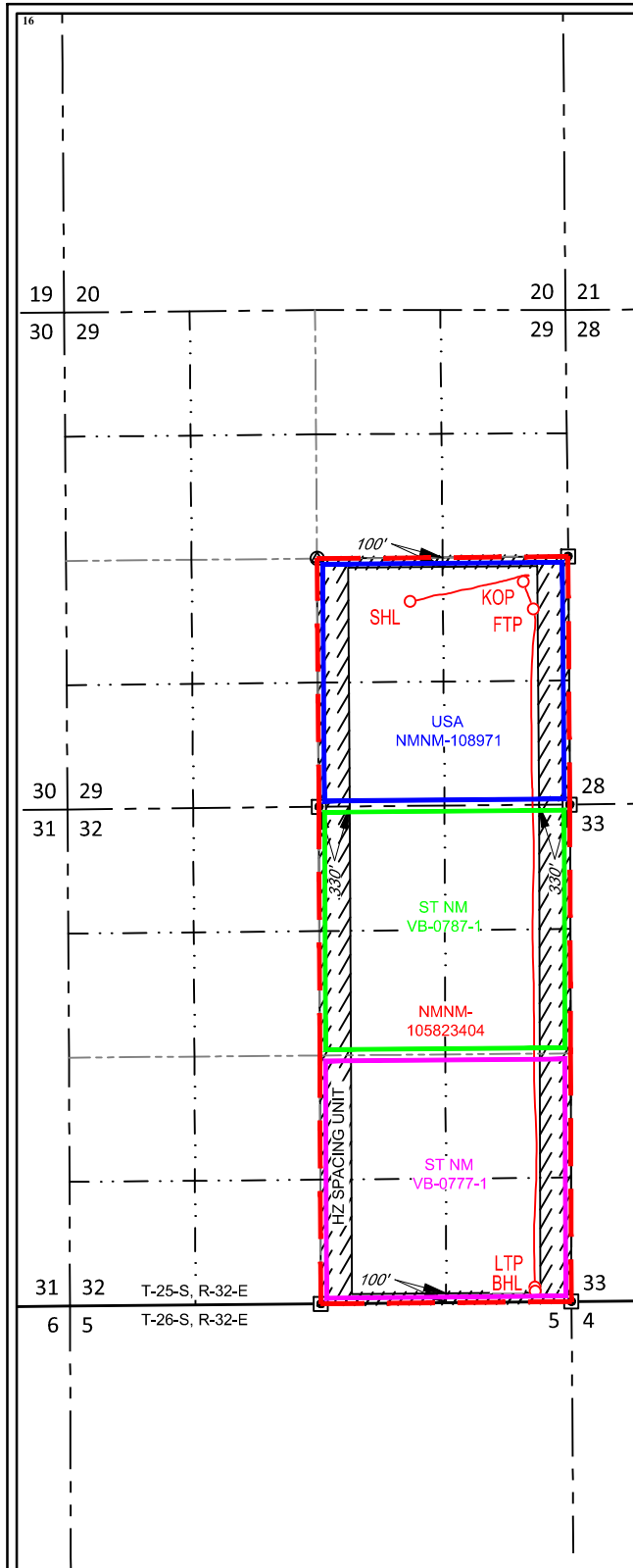
UL or lot no.	Section	Township	Range	Lot Idn	Feet from the	North/South line	Feet from the	East/West line	County
J	29	25-S	32-E	-	2169'	SOUTH	1683'	EAST	LEA

<sup>11</sup>Bottom Hole Location If Different From Surface

UL or lot no.	Section	Township	Range	Lot Idn	Feet from the	North/South line	Feet from the	East/West line	County
P	32	25-S	32-E	-	111'	SOUTH	388'	EAST	LEA

<sup>12</sup> Dedicated Acres <b>480.00</b>	<sup>13</sup> Joint or Infill	<sup>14</sup> Consolidation Code	<sup>15</sup> Order No. <b>PENDING COM AGREEMENT NMNM 105823404</b>
--	-------------------------------	----------------------------------	--

No allowable will be assigned to this completion until all interests have been consolidated or a non-standard unit has been approved by the division.



NEW MEXICO EAST  
NAD 1983

SURFACE LOCATION (SHL)  
2169' FSL - SEC. 29  
1683' FEL - SEC. 29  
X=739287 Y=400734  
LAT.: N 32.1000836  
LONG.: W 103.6940717

KICK OFF POINT (KOP)  
2369' FSL - SEC. 29  
478' FEL - SEC. 29  
X=740491 Y=400944  
LAT.: N 32.1006422  
LONG.: W 103.6901812  
MD=12269' TVD=12111'

FIRST TAKE POINT (FTP)  
2080' FSL - SEC. 29  
376' FEL - SEC. 29  
X=740595 Y=400656  
LAT.: N 32.0998478  
LONG.: W 103.6898510  
MD=12926' TVD=12661'

LAST TAKE POINT (LTP)  
153' FSL - SEC. 32  
388' FEL - SEC. 32  
X=740613 Y=393450  
LAT.: N 32.0800413  
LONG.: W 103.6899295  
MD=20158' TVD=12760'

BOTTOM HOLE LOCATION (BHL)  
111' FSL - SEC. 32  
388' FEL - SEC. 32  
X=740614 Y=393408  
LAT.: N 32.0799258  
LONG.: W 103.6899270  
MD=20200' TVD=12761'

<sup>17</sup>OPERATOR CERTIFICATION

*I hereby certify that the information contained herein is true and complete to the best of my knowledge and belief, and that this organization either owns a working interest or unleased mineral interest in the land including the proposed bottom hole location or has a right to drill this well at this location pursuant to a contract with an owner of such a mineral or working interest, or to a voluntary pooling agreement or a compulsory pooling order heretofore entered by the division.*

*Kay Maddox* 03/05/2024  
Signature Date

**KAY MADDOX**  
Printed Name

KAY\_MADDOX@EOGRESOURCES.COM  
E-mail Address

<sup>18</sup>SURVEYOR CERTIFICATION

*I hereby certify that the well location shown on this plat was plotted from field notes of actual surveys made by me or under my supervision, and that the same is true to the best of my belief.*

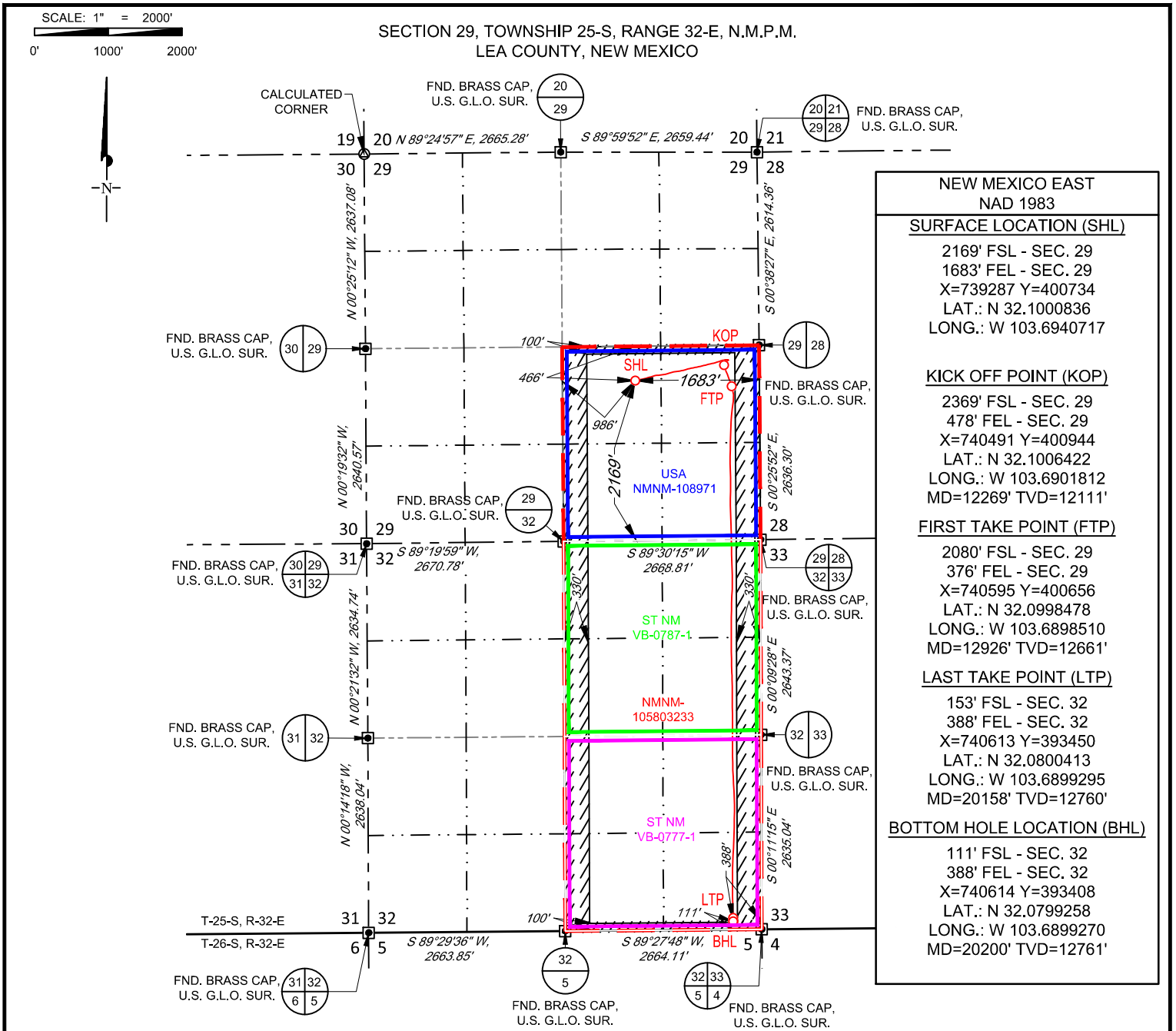
09/21/2022  
Date of Survey

Signature and Seal of Professional Surveyor

Certificate Number

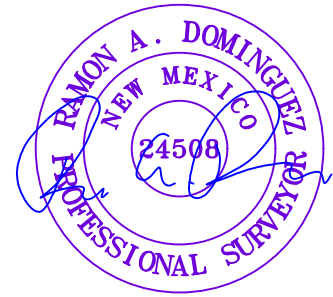
NEW MEXICO EAST  
NAD 1927

<u>SURFACE LOCATION (SHL)</u> X=698101 Y=400676 LAT.: N 32.0999590 LONG.: W 103.6835972	<u>KICK OFF POINT (KOP)</u> X=699305 Y=400886 LAT.: N 32.1005176 LONG.: W 103.6897067
<u>FIRST TAKE POINT (FTP)</u> X=699409 Y=400598 LAT.: N 32.0997232 LONG.: W 103.6893766	<u>LAST TAKE POINT (LTP)</u> X=699427 Y=393393 LAT.: N 32.0799185 LONG.: W 103.6894561
<u>BOTTOM HOLE LOCATION (BHL)</u> X=699428 Y=393351 LAT.: N 32.0798011 LONG.: W 103.6894536	



NEW MEXICO EAST NAD 1983	
<u>SURFACE LOCATION (SHL)</u>	
2169' FSL - SEC. 29	
1683' FEL - SEC. 29	
X=739287 Y=400734	
LAT.: N 32.1000836	
LONG.: W 103.6940717	
<u>KICK OFF POINT (KOP)</u>	
2369' FSL - SEC. 29	
478' FEL - SEC. 29	
X=740491 Y=400944	
LAT.: N 32.1006422	
LONG.: W 103.6901812	
MD=12269' TVD=12111'	
<u>FIRST TAKE POINT (FTP)</u>	
2080' FSL - SEC. 29	
376' FEL - SEC. 29	
X=740595 Y=400656	
LAT.: N 32.0998478	
LONG.: W 103.6898510	
MD=12926' TVD=12661'	
<u>LAST TAKE POINT (LTP)</u>	
153' FSL - SEC. 32	
388' FEL - SEC. 32	
X=740613 Y=393450	
LAT.: N 32.0800413	
LONG.: W 103.6899295	
MD=20158' TVD=12760'	
<u>BOTTOM HOLE LOCATION (BHL)</u>	
111' FSL - SEC. 32	
388' FEL - SEC. 32	
X=740614 Y=393408	
LAT.: N 32.0799258	
LONG.: W 103.6899270	
MD=20200' TVD=12761'	

LEASE NAME & WELL NO.: \_\_\_\_\_ JEFE 29 FED COM 759H  
 SECTION 29 TWP 25-S RGE 32-E SURVEY N.M.P.M.  
 COUNTY LEA STATE NM ELEVATION 3351'  
 DESCRIPTION 2169' FSL & 1683' FEL



Ramon A. Dominguez, P.S. No. 24508  
 March 17, 2023

**TOPOGRAPHIC**  
 LOYALTY INNOVATION LEGACY  
 481 WINSCOTT ROAD, Ste. 200 • BENBROOK, TEXAS 76126  
 TELEPHONE: (817) 744-7512 • FAX (817) 744-7554  
 TEXAS FIRM REGISTRATION NO. 10042504  
 WWW.TOPOGRAPHIC.COM



JEFE 29 FED COM 759H AS-DRILLED	REVISION:	NOTES: 1. ORIGINAL DOCUMENT SIZE: 8.5" X 11" 2. ALL BEARINGS, DISTANCES, AND COORDINATE VALUES CONTAINED HEREIN ARE GRID BASED UPON THE NEW MEXICO COORDINATE SYSTEM OF 1983, EAST ZONE, U.S. SURVEY FEET. 3. THIS WELL LOCATION SHOWN HEREON HAS BEEN SURVEYED ON THE GROUND UNDER MY SUPERVISION AND PREPARED ACCORDING TO THE EVIDENCE FOUND AT THE TIME OF SURVEY, AND DATA PROVIDED BY EOG RESOURCES, INC. THIS CERTIFICATION IS MADE AND LIMITED TO THOSE PERSONS OR ENTITIES SHOWN ON THE FACE OF THIS PLAT AND IS NON-TRANSFERABLE. THIS SURVEY IS CERTIFIED FOR THIS TRANSACTION ONLY. 4. ADJOINER INFORMATION SHOWN FOR INFORMATIONAL PURPOSES ONLY.
	DATE: 03/16/2023	
	FILE:AD_JEFE_29_FED_COM_759H	
	DRAWN BY: SAR	
	SHEET: 2 OF 2	

**District I**  
 1625 N. French Dr., Hobbs, NM 88240  
 Phone:(575) 393-6161 Fax:(575) 393-0720

**District II**  
 811 S. First St., Artesia, NM 88210  
 Phone:(575) 748-1283 Fax:(575) 748-9720

**District III**  
 1000 Rio Brazos Rd., Aztec, NM 87410  
 Phone:(505) 334-6178 Fax:(505) 334-6170

**District IV**  
 1220 S. St Francis Dr., Santa Fe, NM 87505  
 Phone:(505) 476-3470 Fax:(505) 476-3462

**State of New Mexico**  
**Energy, Minerals and Natural Resources**  
**Oil Conservation Division**  
**1220 S. St Francis Dr.**  
**Santa Fe, NM 87505**

CONDITIONS

Action 320424

**CONDITIONS**

Operator: EOG RESOURCES INC 5509 Champions Drive Midland, TX 79706	OGRID: 7377
	Action Number: 320424
	Action Type: [C-102] Well Location & Acreage Plat (C-102)

**CONDITIONS**

Created By	Condition	Condition Date
pkautz	None	3/5/2024