

**District I**  
1625 N. French Dr., Hobbs, NM 88240  
Phone:(575) 393-6161 Fax:(575) 393-0720

**District II**  
811 S. First St., Artesia, NM 88210  
Phone:(575) 748-1283 Fax:(575) 748-9720

**District III**  
1000 Rio Brazos Rd., Aztec, NM 87410  
Phone:(505) 334-6178 Fax:(505) 334-6170

**District IV**  
1220 S. St Francis Dr., Santa Fe, NM 87505  
Phone:(505) 476-3470 Fax:(505) 476-3462

**State of New Mexico**  
**Energy, Minerals and Natural Resources**  
**Oil Conservation Division**  
**1220 S. St Francis Dr.**  
**Santa Fe, NM 87505**

Form C-101  
August 1, 2011  
Permit 362754

**APPLICATION FOR PERMIT TO DRILL, RE-ENTER, DEEPEN, PLUGBACK, OR ADD A ZONE**

|                                                                                                       |  |                               |
|-------------------------------------------------------------------------------------------------------|--|-------------------------------|
| 1. Operator Name and Address<br>Franklin Mountain Energy 3, LLC<br>44 Cook Street<br>Denver, CO 80206 |  | 2. OGRID Number<br>331595     |
| 4. Property Code<br>333825                                                                            |  | 3. API Number<br>30-025-52734 |
| 5. Property Name<br>NORTE STATE COM                                                                   |  | 6. Well No.<br>604H           |

**7. Surface Location**

|               |              |                 |              |              |                  |               |                   |               |               |
|---------------|--------------|-----------------|--------------|--------------|------------------|---------------|-------------------|---------------|---------------|
| UL - Lot<br>A | Section<br>3 | Township<br>19S | Range<br>35E | Lot Idn<br>1 | Feet From<br>678 | N/S Line<br>N | Feet From<br>1277 | E/W Line<br>E | County<br>Lea |
|---------------|--------------|-----------------|--------------|--------------|------------------|---------------|-------------------|---------------|---------------|

**8. Proposed Bottom Hole Location**

|               |               |                 |              |              |                  |               |                  |               |               |
|---------------|---------------|-----------------|--------------|--------------|------------------|---------------|------------------|---------------|---------------|
| UL - Lot<br>A | Section<br>27 | Township<br>18S | Range<br>35E | Lot Idn<br>A | Feet From<br>100 | N/S Line<br>N | Feet From<br>360 | E/W Line<br>E | County<br>Lea |
|---------------|---------------|-----------------|--------------|--------------|------------------|---------------|------------------|---------------|---------------|

**9. Pool Information**

|                           |       |
|---------------------------|-------|
| SCHARB;BONE SPRING        | 55610 |
| VACUUM;BONE SPRING, SOUTH | 61900 |

**Additional Well Information**

|                           |                             |                                        |                         |                                    |
|---------------------------|-----------------------------|----------------------------------------|-------------------------|------------------------------------|
| 11. Work Type<br>New Well | 12. Well Type<br>OIL        | 13. Cable/Rotary                       | 14. Lease Type<br>State | 15. Ground Level Elevation<br>3830 |
| 16. Multiple<br>Y         | 17. Proposed Depth<br>20806 | 18. Formation<br>3rd Bone Spring Sand  | 19. Contractor          | 20. Spud Date<br>5/15/2024         |
| Depth to Ground water     |                             | Distance from nearest fresh water well |                         | Distance to nearest surface water  |

We will be using a closed-loop system in lieu of lined pits

**21. Proposed Casing and Cement Program**

| Type | Hole Size | Casing Size | Casing Weight/ft | Setting Depth | Sacks of Cement | Estimated TOC |
|------|-----------|-------------|------------------|---------------|-----------------|---------------|
| Surf | 17.5      | 13.375      | 54.5             | 1848          | 1422            | 0             |
| Int1 | 12.25     | 9.625       | 40               | 3978          | 841             | 0             |
| Prod | 8.75      | 7           | 32               | 9455          | 452             | 2978          |
| Prod | 8.75      | 5.5         | 20               | 20806         | 2833            | 9455          |

**Casing/Cement Program: Additional Comments**

|                                                      |
|------------------------------------------------------|
| Please see attached 14-pt plan for more information. |
|------------------------------------------------------|

**22. Proposed Blowout Prevention Program**

| Type       | Working Pressure | Test Pressure | Manufacturer |
|------------|------------------|---------------|--------------|
| Double Ram | 10000            | 5000          | Cactus       |

|                                                                                                                                                                                                                                                                                                           |                                  |                                 |  |
|-----------------------------------------------------------------------------------------------------------------------------------------------------------------------------------------------------------------------------------------------------------------------------------------------------------|----------------------------------|---------------------------------|--|
| 23. I hereby certify that the information given above is true and complete to the best of my knowledge and belief.<br><b>I further certify I have complied with 19.15.14.9 (A) NMAC <input checked="" type="checkbox"/> and/or 19.15.14.9 (B) NMAC <input checked="" type="checkbox"/> if applicable.</b> | <b>OIL CONSERVATION DIVISION</b> |                                 |  |
| Signature:                                                                                                                                                                                                                                                                                                |                                  |                                 |  |
| Printed Name: Electronically filed by Rachael A Overbey                                                                                                                                                                                                                                                   | Approved By: Paul F Kautz        |                                 |  |
| Title: Project Manager                                                                                                                                                                                                                                                                                    | Title: Geologist                 |                                 |  |
| Email Address: roverbey@fmellc.com                                                                                                                                                                                                                                                                        | Approved Date: 4/4/2024          | Expiration Date: 4/4/2026       |  |
| Date: 4/2/2024                                                                                                                                                                                                                                                                                            | Phone: 303-570-4057              | Conditions of Approval Attached |  |

District I  
1625 N. French Dr., Hobbs, NM 88240  
Phone: (575) 393-6161 Fax: (575) 393-0720  
District II  
811 S. First St., Artesia, NM 88210  
Phone: (575) 748-1283 Fax: (575) 748-9720  
District III  
1000 Rio Brazos Road, Aztec, NM 87410  
Phone: (505) 334-6178 Fax: (505) 334-6170  
District IV  
1220 S. St. Francis Dr., Santa Fe, NM 87505  
Phone: (505) 476-3460 Fax: (505) 476-3462

State of New Mexico  
Energy, Minerals & Natural Resources Department  
OIL CONSERVATION DIVISION  
1220 South St. Francis Dr.  
Santa Fe, NM 87505

Form C-102  
Revised August 1, 2011  
Submit one copy to appropriate  
District Office

AMENDED REPORT

WELL LOCATION AND ACREAGE DEDICATION PLAT

|                                  |  |                                                               |  |                                              |                                   |
|----------------------------------|--|---------------------------------------------------------------|--|----------------------------------------------|-----------------------------------|
| <sup>1</sup> API Number          |  | <sup>2</sup> Pool Code<br>55610                               |  | <sup>3</sup> Pool Name<br>SCHARB;BONE SPRING |                                   |
| <sup>4</sup> Property Code       |  | <sup>5</sup> Property Name<br>NORTE STATE COM                 |  |                                              | <sup>6</sup> Well Number<br>604H  |
| <sup>7</sup> OGRID No.<br>331595 |  | <sup>8</sup> Operator Name<br>FRANKLIN MOUNTAIN ENERGY 3, LLC |  |                                              | <sup>9</sup> Elevation<br>3830.7' |

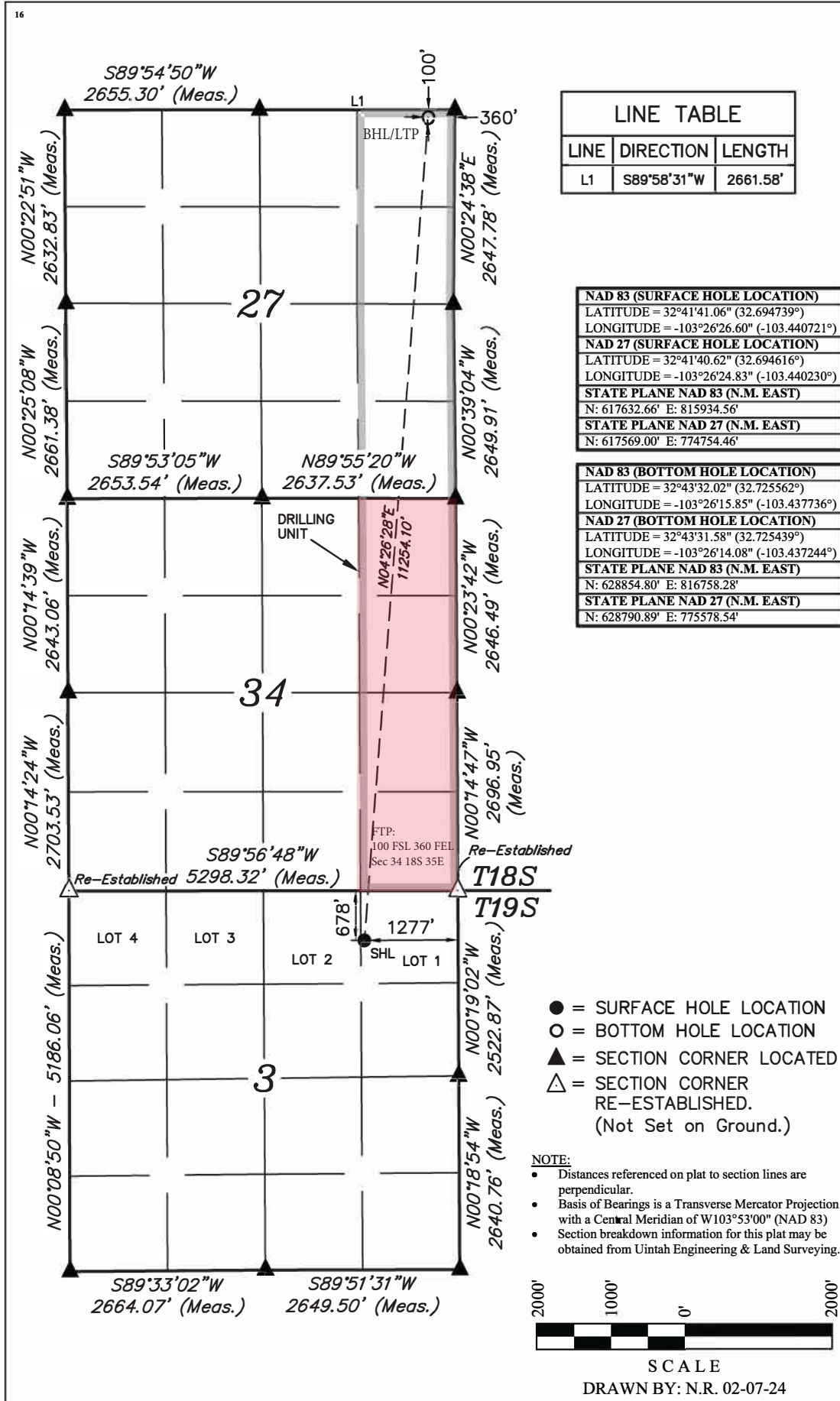
<sup>10</sup> Surface Location

| UL or lot no. | Section | Township | Range | Lot Idn | Feet from the | North/South line | Feet from the | East/West line | County |
|---------------|---------|----------|-------|---------|---------------|------------------|---------------|----------------|--------|
| 1             | 3       | 19S      | 35E   |         | 678           | NORTH            | 1277          | EAST           | LEA    |

<sup>11</sup> Bottom Hole Location If Different From Surface

| UL or lot no.                        | Section | Township                      | Range | Lot Idn                          | Feet from the | North/South line        | Feet from the | East/West line | County |
|--------------------------------------|---------|-------------------------------|-------|----------------------------------|---------------|-------------------------|---------------|----------------|--------|
| A                                    | 27      | 18S                           | 35E   |                                  | 100           | NORTH                   | 360           | EAST           | LEA    |
| <sup>12</sup> Dedicated Acres<br>160 |         | <sup>13</sup> Joint or Infill |       | <sup>14</sup> Consolidation Code |               | <sup>15</sup> Order No. |               |                |        |

No allowable will be assigned to this completion until all interests have been consolidated or a non-standard unit has been approved by the division.



| LINE | DIRECTION   | LENGTH   |
|------|-------------|----------|
| L1   | S89°58'31"W | 2661.58' |

| NAD 83 (SURFACE HOLE LOCATION)            |  |
|-------------------------------------------|--|
| LATITUDE = 32°41'41.06" (32.694739°)      |  |
| LONGITUDE = -103°26'26.60" (-103.440721°) |  |
| NAD 27 (SURFACE HOLE LOCATION)            |  |
| LATITUDE = 32°41'40.62" (32.694616°)      |  |
| LONGITUDE = -103°26'24.83" (-103.440230°) |  |
| STATE PLANE NAD 83 (N.M. EAST)            |  |
| N: 617632.66' E: 815934.56'               |  |
| STATE PLANE NAD 27 (N.M. EAST)            |  |
| N: 617569.00' E: 774754.46'               |  |

| NAD 83 (BOTTOM HOLE LOCATION)             |  |
|-------------------------------------------|--|
| LATITUDE = 32°43'32.02" (32.725562°)      |  |
| LONGITUDE = -103°26'15.85" (-103.437736°) |  |
| NAD 27 (BOTTOM HOLE LOCATION)             |  |
| LATITUDE = 32°43'31.58" (32.725439°)      |  |
| LONGITUDE = -103°26'14.08" (-103.437244°) |  |
| STATE PLANE NAD 83 (N.M. EAST)            |  |
| N: 628854.80' E: 816758.28'               |  |
| STATE PLANE NAD 27 (N.M. EAST)            |  |
| N: 628790.89' E: 775578.54'               |  |

**<sup>17</sup> OPERATOR CERTIFICATION**  
I hereby certify that the information contained herein is true and complete to the best of my knowledge and belief, and that this organization either owns a working interest or unleased mineral interest in the land including the proposed bottom hole location or has a right to drill this well at this location pursuant to a contract with an owner of such a mineral or working interest, or to a voluntary pooling agreement or a compulsory pooling order heretofore entered by the division.

*Rachael Overbey* 2/13/2024  
Signature Date

Rachael Overbey  
Printed Name  
roverbey@fmellc.com  
E-mail Address

**<sup>18</sup> SURVEYOR CERTIFICATION**  
I hereby certify that the well location shown on this plat was plotted from field notes of actual surveys made by me or under my supervision, and that the same is true and correct to the best of my belief.

October 17, 2023  
Date of Survey

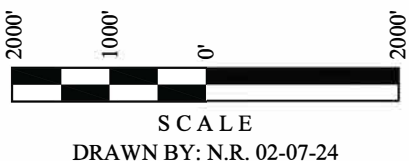
Signature and Seal of Professional Surveyor:



- = SURFACE HOLE LOCATION
- = BOTTOM HOLE LOCATION
- ▲ = SECTION CORNER LOCATED
- △ = SECTION CORNER RE-ESTABLISHED. (Not Set on Ground.)

**NOTE:**

- Distances referenced on plat to section lines are perpendicular.
- Basis of Bearings is a Transverse Mercator Projection with a Central Meridian of W103°53'00" (NAD 83)
- Section breakdown information for this plat may be obtained from Uintah Engineering & Land Surveying.



Certificate Number:

District I  
1625 N. French Dr., Hobbs, NM 88240  
Phone: (575) 393-6161 Fax: (575) 393-0720  
District II  
811 S. First St., Artesia, NM 88210  
Phone: (575) 748-1283 Fax: (575) 748-9720  
District III  
1000 Rio Brazos Road, Aztec, NM 87410  
Phone: (505) 334-6178 Fax: (505) 334-6170  
District IV  
1220 S. St. Francis Dr., Santa Fe, NM 87505  
Phone: (505) 476-3460 Fax: (505) 476-3462

State of New Mexico  
Energy, Minerals & Natural Resources Department  
OIL CONSERVATION DIVISION  
1220 South St. Francis Dr.  
Santa Fe, NM 87505

Form C-102  
Revised August 1, 2011  
Submit one copy to appropriate  
District Office

AMENDED REPORT

WELL LOCATION AND ACREAGE DEDICATION PLAT

|                                  |  |                                                               |  |                                                     |                                   |
|----------------------------------|--|---------------------------------------------------------------|--|-----------------------------------------------------|-----------------------------------|
| <sup>1</sup> API Number          |  | <sup>2</sup> Pool Code<br>61900                               |  | <sup>3</sup> Pool Name<br>VACUUM,BONE SPRING, SOUTH |                                   |
| <sup>4</sup> Property Code       |  | <sup>5</sup> Property Name<br>NORTE STATE COM                 |  |                                                     | <sup>6</sup> Well Number<br>604H  |
| <sup>7</sup> OGRID No.<br>331595 |  | <sup>8</sup> Operator Name<br>FRANKLIN MOUNTAIN ENERGY 3, LLC |  |                                                     | <sup>9</sup> Elevation<br>3830.7' |

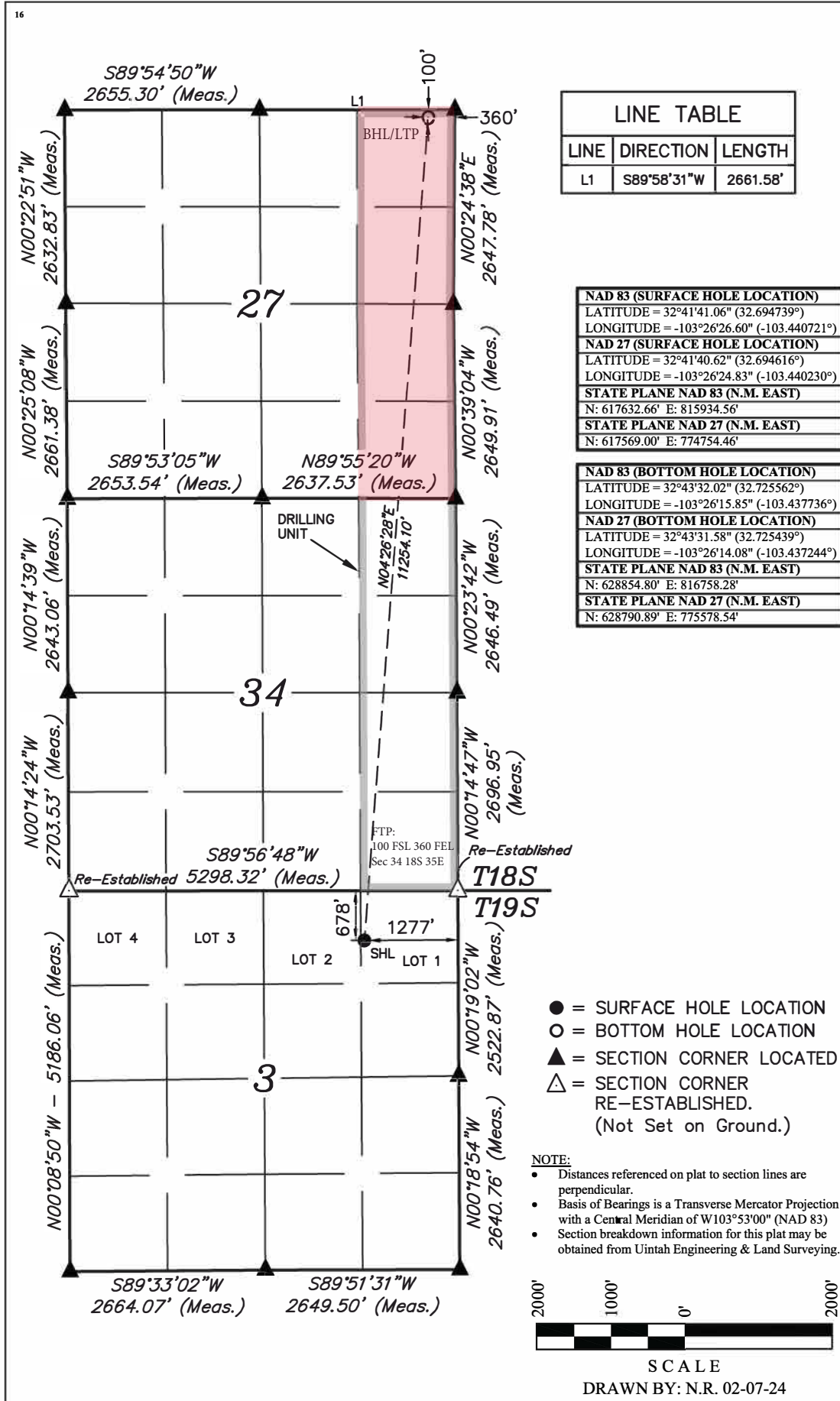
<sup>10</sup> Surface Location

| UL or lot no. | Section | Township | Range | Lot Idn | Feet from the | North/South line | Feet from the | East/West line | County |
|---------------|---------|----------|-------|---------|---------------|------------------|---------------|----------------|--------|
| 1             | 3       | 19S      | 35E   |         | 678           | NORTH            | 1277          | EAST           | LEA    |

<sup>11</sup> Bottom Hole Location If Different From Surface

| UL or lot no.                        | Section | Township                      | Range | Lot Idn                          | Feet from the | North/South line        | Feet from the | East/West line | County |
|--------------------------------------|---------|-------------------------------|-------|----------------------------------|---------------|-------------------------|---------------|----------------|--------|
| A                                    | 27      | 18S                           | 35E   |                                  | 100           | NORTH                   | 360           | EAST           | LEA    |
| <sup>12</sup> Dedicated Acres<br>160 |         | <sup>13</sup> Joint or Infill |       | <sup>14</sup> Consolidation Code |               | <sup>15</sup> Order No. |               |                |        |

No allowable will be assigned to this completion until all interests have been consolidated or a non-standard unit has been approved by the division.



**LINE TABLE**

| LINE | DIRECTION   | LENGTH   |
|------|-------------|----------|
| L1   | S89°58'31"W | 2661.58' |

**NAD 83 (SURFACE HOLE LOCATION)**  
LATITUDE = 32°41'41.06" (32.694739°)  
LONGITUDE = -103°26'26.60" (-103.440721°)

**NAD 27 (SURFACE HOLE LOCATION)**  
LATITUDE = 32°41'40.62" (32.694616°)  
LONGITUDE = -103°26'24.83" (-103.440230°)

**STATE PLANE NAD 83 (N.M. EAST)**  
N: 617632.66' E: 815934.56'

**STATE PLANE NAD 27 (N.M. EAST)**  
N: 617569.00' E: 774754.46'

**NAD 83 (BOTTOM HOLE LOCATION)**  
LATITUDE = 32°43'32.02" (32.725562°)  
LONGITUDE = -103°26'15.85" (-103.437736°)

**NAD 27 (BOTTOM HOLE LOCATION)**  
LATITUDE = 32°43'31.58" (32.725439°)  
LONGITUDE = -103°26'14.08" (-103.437244°)

**STATE PLANE NAD 83 (N.M. EAST)**  
N: 628854.80' E: 816758.28'

**STATE PLANE NAD 27 (N.M. EAST)**  
N: 628790.89' E: 775578.54'

**<sup>17</sup> OPERATOR CERTIFICATION**  
I hereby certify that the information contained herein is true and complete to the best of my knowledge and belief, and that this organization either owns a working interest or unleased mineral interest in the land including the proposed bottom hole location or has a right to drill this well at this location pursuant to a contract with an owner of such a mineral or working interest, or to a voluntary pooling agreement or a compulsory pooling order heretofore entered by the division.

*Rachael Overbey* 2/13/2024  
Signature Date

Rachael Overbey  
Printed Name  
roverbey@fmellc.com  
E-mail Address

**<sup>18</sup> SURVEYOR CERTIFICATION**  
I hereby certify that the well location shown on this plat was plotted from field notes of actual surveys made by me or under my supervision, and that the same is true and correct to the best of my belief.

October 17, 2023  
Date of Survey

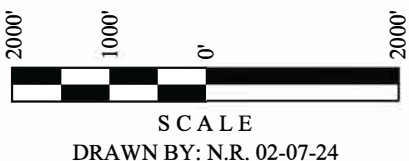
Signature and Seal of Professional Surveyor:



- = SURFACE HOLE LOCATION
- = BOTTOM HOLE LOCATION
- ▲ = SECTION CORNER LOCATED
- △ = SECTION CORNER RE-ESTABLISHED. (Not Set on Ground.)

**NOTE:**

- Distances referenced on plat to section lines are perpendicular.
- Basis of Bearings is a Transverse Mercator Projection with a Central Meridian of W103°53'00" (NAD 83)
- Section breakdown information for this plat may be obtained from Uintah Engineering & Land Surveying.



**District I**  
 1625 N. French Dr., Hobbs, NM 88240  
 Phone:(575) 393-6161 Fax:(575) 393-0720

**District II**  
 811 S. First St., Artesia, NM 88210  
 Phone:(575) 748-1283 Fax:(575) 748-9720

**District III**  
 1000 Rio Brazos Rd., Aztec, NM 87410  
 Phone:(505) 334-6178 Fax:(505) 334-6170

**District IV**  
 1220 S. St Francis Dr., Santa Fe, NM 87505  
 Phone:(505) 476-3470 Fax:(505) 476-3462

**State of New Mexico**  
**Energy, Minerals and Natural Resources**  
**Oil Conservation Division**  
**1220 S. St Francis Dr.**  
**Santa Fe, NM 87505**

Form APD Conditions

Permit 362754

**PERMIT CONDITIONS OF APPROVAL**

|                                                                                                              |                                |
|--------------------------------------------------------------------------------------------------------------|--------------------------------|
| Operator Name and Address:<br>Franklin Mountain Energy 3, LLC [331595]<br>44 Cook Street<br>Denver, CO 80206 | API Number:<br>30-025-52734    |
|                                                                                                              | Well:<br>NORTE STATE COM #604H |

| OCD Reviewer | Condition                                                                                                                                                                                                                                                            |
|--------------|----------------------------------------------------------------------------------------------------------------------------------------------------------------------------------------------------------------------------------------------------------------------|
| pkautz       | Notify OCD 24 hours prior to casing & cement                                                                                                                                                                                                                         |
| pkautz       | Will require a File As Drilled C-102 and a Directional Survey with the C-104                                                                                                                                                                                         |
| pkautz       | Once the well is spud, to prevent ground water contamination through whole or partial conduits from the surface, the operator shall drill without interruption through the fresh water zone or zones and shall immediately set in cement the water protection string |
| pkautz       | Oil base muds are not to be used until fresh water zones are cased and cemented providing isolation from the oil or diesel. This includes synthetic oils. Oil based mud, drilling fluids and solids must be contained in a steel closed loop system                  |
| pkautz       | Cement is required to circulate on both surface and intermediate1 strings of casing                                                                                                                                                                                  |
| pkautz       | If cement does not circulate on any string, a CBL is required for that string of casing                                                                                                                                                                              |
| pkautz       | The Operator is to notify NMOCD by sundry (Form C-103) within ten (10) days of the well being spud                                                                                                                                                                   |



# Norte State Com 604H

1. Geologic name of surface location: Permian
2. Estimated tops of important geological markers:

| Formations                   | PROG SS        | PROG TVD      | Picked TVD | delta | Potential/Issues                     |
|------------------------------|----------------|---------------|------------|-------|--------------------------------------|
| Cenozoic Alluvium (surface)  | 3,826'         | 30'           | 30'        | 0     | Sand/Gravels/Unconsolidated          |
| Rustler                      | 2,059'         | 1,798'        |            |       | Carbonates                           |
| Salado                       | 1,823'         | 2,034'        |            |       | Salt, Carbonate & Clastics           |
| Base Salt                    | 704'           | 3,152'        |            |       | Shaley Carbonate & Shale             |
| Yates                        | 536'           | 3,321'        |            |       | Anhydrite/Shale                      |
| Seven Rivers                 | 100'           | 3,756'        |            |       | Interbedded Shale/Carbonate          |
| Queen                        | -655'          | 4,511'        |            |       | Sandstone & Dolomite & Anhydrite     |
| Delaware Mtn Group           | -2,212'        | 6,069'        |            |       | Sandstone/Carb/Shale - oil/gas/water |
| Bone Spring Lime             | -3,445'        | 7,302'        |            |       | Shale/Carbonates - oil/gas           |
| First Bone Spring Sand       | -5,033'        | 8,889'        |            |       | Sandstone - oil/gas/water            |
| Second Bone Spring Carbonate | -5,256'        | 9,113'        |            |       | Shale/Carbonates - oil/gas           |
| Second Bone Spring Sand      | -5,403'        | 9,259'        |            |       | Sandstone - oil/gas/water            |
| Third Bone Spring Carbonate  | -5,860'        | 9,716'        |            |       | Shale/Carbonates - oil/gas           |
| Third Bone Spring Sand       | -5,956'        | 9,813'        |            |       | Sandstone - oil/gas/water            |
| <b>HZ Target</b>             | <b>-6,117'</b> | <b>9,973'</b> |            |       | <b>Shale/Sand- oil/gas</b>           |
| Wolfcamp                     | -6,182'        | 10,038'       |            |       | Overpressure Shale/Sand- oil/gas     |

3. Estimated depth of anticipated fresh water, oil or gas:

|                                  |         |             |
|----------------------------------|---------|-------------|
| Upper Permian Sands              | 0- 400' | Fresh Water |
| Delaware Sands                   | 6,069'  | Oil         |
| 1 <sup>st</sup> Bone Spring Sand | 8,889'  | Oil         |
| 2 <sup>nd</sup> Bone Spring Carb | 9,113'  | Oil         |
| 2 <sup>nd</sup> Bone Spring Sand | 9,259'  | Oil         |
| 3 <sup>rd</sup> Bone Spring Sand | 9,813'  | Oil         |
| Wolfcamp                         | N/A     | Oil         |
| Wolfcamp B                       | N/A     | Oil         |

No other formations are expected to give up oil, gas or fresh water in measurable quantities. Surface freshwater sands will be protected by setting 13-3/8" casing at 1,848' and circulating cement back to surface.

4. Casing Program:

All casing strings will be run new.

| Casing string       | Weight | Grade   | Burst | Collapse | Tension | Conn            | Length          | API design factor |          |         |              |
|---------------------|--------|---------|-------|----------|---------|-----------------|-----------------|-------------------|----------|---------|--------------|
|                     |        |         |       |          |         |                 |                 | Burst             | Collapse | Tension | Coupling     |
| Surface 13 3/8"     | 54.5   | J-55    | 2730  | 1130     | 853     | BTC<br>909      | 1,848           | 1.03              | 1.18     | 4.25    | 4.53         |
| Intermediate 9 5/8" | 40     | HCL-80  | 7430  | 4230     | 916     | BTC<br>1042     | 3,978           | 2.08              | 2.27     | 3.54    | 4.02         |
| Production 7"       | 32     | HCP-110 | 12460 | 10760    | 1025    | CDC-HTQ<br>1053 | 9,455           | 1.94              | 2.43     | 2.55    | 2.62         |
| Production 5 1/2"   | 20     | HCP-110 | 12640 | 12200    | 641     | CDC-HTQ<br>667  | 11,351<br>9,973 | 1.15              | 2.30     | 1.96    | 2.04<br>2.23 |



Tapered production string will be ran with a X-over installed at the KOP of 9,455'.

**Cementing Program:**

Cementing Stage tool can be placed in the 1st Intermediate string as a contingency to ensure required TOC to surface.

To increase efficiency of drilling operations and minimize disturbance of the area the batch-drilling approach will be used.

Off-line cementing may be utilized for Surface, Intermediate, and Production strings to further optimization of drilling process and reduction of disturbance.

| String Type | Hole Size | Casing |               | Sacks | Lead<br>Type of cmt                                                               | Lead            |                 |           | Sacks | Tail<br>Type of cmt                                              | Tail            |                 |       | Excess |
|-------------|-----------|--------|---------------|-------|-----------------------------------------------------------------------------------|-----------------|-----------------|-----------|-------|------------------------------------------------------------------|-----------------|-----------------|-------|--------|
|             |           | Size   | Setting Depth |       |                                                                                   | Yield<br>ft3/sk | Water<br>gal/sk | TOC<br>ft |       |                                                                  | Yield<br>ft3/sk | Water<br>gal/sk | TOC   |        |
| Surf        | 17.5      | 13.375 | 1,848         | 981   | 85:15 Compass Poz,<br>12.8 ppg Class C,<br>5%Gel,3#/sk Kol<br>Seal, 4.64#/sk Salt | 2.05            | 11.12           | 0         | 441   | Tail, 14.8 ppg,<br>100% Class C,<br>1%CaCl2,<br>0.1%             | 1.34            | 6.35            | 0     | 100%   |
| Int1        | 12.25     | 9.625  | 3,978         | 640   | Lead, 11.3 ppg,<br>HSLD 82<br>10% Gel,<br>4% STE, 2#/sk,<br>Gyp Seal              | 2.74            | 16.31           | 0         | 201   | Econolite<br>Tail, 14.8 ppg,<br>100% Class C,<br>0.08% C-51      | 1.33            | 6.33            | 1,212 | 100%   |
| Prod        | 8.75      | 7      | 9,455         | 452   | HSLD 9420, 10.5<br>ppg, Class C, 1#/sk<br>Salt, 4% STE<br>1% C-45                 | 3.99            | 25.51           | 2,978     |       |                                                                  |                 |                 |       | 100%   |
| Prod        | 8.75      | 5.5    | 20,806        |       |                                                                                   |                 |                 |           | 2833  | HSLD 80,<br>13.ppg,<br>32#/sk Salt,<br>4% STE, 1#/sk<br>Gyp Seal | 1.52            | 7.59            | 9,455 | 50%    |

**5. Minimum Specifications for Pressure Control:**

The minimum blowout preventer equipment (BOPE) shown in Exhibit #1 will consist of a single ram, mud cross and double ram-type (10,000 psi WP) preventer and an annular preventer (5,000-psi WP). Both units will be hydraulically operated, and the ram-type will be equipped with blind rams on bottom and 4 ½" x 7" variable pipe rams on top. All BOPE will be tested in accordance with Onshore Oil & Gas order No. 2.

Before drilling out of the surface casing, the ram-type BOP and accessory equipment will be tested to 5,000/250 psig and the annular preventer to 3,500/250 psig. The surface casing will be tested to 1500 psi for 30 minutes.

Before drilling out of the intermediate casing, the ram-type BOP and accessory equipment will be tested to 10,000/250 psig and the annular preventer to 3,500/250 psig.

Pipe rams will be operationally checked each 24-hour period. Blind rams will be operationally checked on each trip out of the hole. These checks will be noted on the daily tour sheets.



A hydraulically operated choke will be installed prior to drilling out of the intermediate casing shoe.

**6. Types and characteristics of the proposed mud system:**

During this procedure we plan to use a Closed-Loop System and haul contents to the required disposal. The applicable depths and properties of the drilling fluid systems are as follows.

| Depth                        | Type        | Weight (ppg) | Viscosity | Water Loss |
|------------------------------|-------------|--------------|-----------|------------|
| 0 – 1,848'                   | Fresh - Gel | 8.6-8.8      | 28-34     | N/c        |
| 1,848' – 3,978'              | Brine       | 8.8-10.2     | 28-34     | N/c        |
| 3,978" – 10,355'             | Brine       | 8.8-10.2     | 28-34     | N/c        |
| 10,355' – 20,806'<br>Lateral | Oil Base    | 9.0-11       | 58-68     | 3 - 6      |

The

highest mud weight needed to balance formation is expected to be 9-11 ppg. In order to maintain hole stability, mud weights up to 11 ppg may be utilized.

An electronic pit volume totalizer (PVT) will be utilized on the circulating system, to monitor pit volume, flow rate, pump pressure and stroke rate.

Sufficient mud materials to maintain mud properties and meet minimum lost circulation and weight increase requirements will be kept at the wellsite at all times.

**7. Auxiliary well control and monitoring equipment:**

- (A) A kelly cock will be kept in the drill string at all times.
- (B) A full opening drill pipe-stabbing valve (inside BOP) with proper drill pipe connections will be kept on the rig floor at all times.
- (C) H2S monitoring and detection equipment will be utilized from surface casing point to TD.
- (D) A wear bushing will be installed in the wellhead prior to drilling out of the surface casing.

**8. Logging, testing and coring program:**

GR–CCL–CNL Will be run in cased hole during completions phase of operations. Open-hole logs are not planned for this well.

**9. Abnormal conditions, pressures, temperatures and potential hazards:**

The estimated bottom-hole temperature at 9,973' TVD (deepest point of the well) is 185F with an estimated maximum bottom-hole pressure (BHP) at the same point of 5,705' psig (based on 11 ppg MW). Hydrogen Sulfide may be present in the area. All necessary precautions will be taken before drilling operations commence. See Hydrogen Sulfide Plan below:

**10. Hydrogen Sulfide Plan:**

- A. All personnel shall receive proper awareness H2S training.
- B. Briefing Area: two perpendicular areas will be designated by signs and readily accessible.
- C. Required Emergency Equipment
  - a. Well Control Equipment
    - i. Flare line 150' from wellhead to be ignited by auto ignition sparking system.
    - ii. Choke manifold with a remotely operated hydraulic choke.



- iii. Mud/gas separator
- b. Protective equipment for essential personnel
  - i. Breathing Apparatus
    - 1. Rescue packs (SCBA) – 1 unit shall be placed at each briefing area, 2 shall be stored in a safety trailer on site.
    - 2. Work/Escapes packs – 4 packs shall be stored on the rig floor with sufficient air hose not to restrict work activity
    - 3. Emergency Escape Packs – 4 packs shall be stored in the doghouse for emergency evacuation.
  - ii. Auxiliary Rescue Equipment
    - 1. Stretcher
    - 2. Two OSHA full body harnesses
    - 3. 100 feet of 5/8 inches OSHA approved rope
    - 4. 1-20# class ABC fire extinguisher
- c. H2S Detection and Monitoring Equipment
  - i. A stationary detector with three sensors will be placed in the doghouse if equipped, set to visually alarm at 10 ppm and audible at 14 ppm. The detector will be calibrated a minimum of every 30 days or as needed. The sensors will be placed in the following places:
    - 1. Rig Floor
    - 2. Below Rig Floor / Near BOPs
    - 3. End of flow line or where well bore fluid is being discharged (near shakers)
  - ii. If H2S is encountered, measured values and formations will be provided to the BLM.
- d. Visual Warning Systems
  - i. One color code condition sign will be placed at the entrance to the site reflecting the possible conditions at the site.
  - ii. A colored condition flag will be on display, reflecting the current condition at the site at the time.
  - iii. Two windsocks will be placed in strategic locations, visible from all angles.
- e. Mud Program
  - i. The Mud program will be designed to minimize the volume of H2S circulated to surface. The operator will have the necessary mud products to minimize hazards while drilling in H2S bearing zones.
- f. Metallurgy
  - i. All drill strings, casings, tubing, wellhead, blowout preventer, drilling spool, kill lines, choke manifold and lines, and valves shall be suitable for H2S service at the anticipated operating pressures to prevent sour sulfide stress cracking.
- g. Communication
  - i. Communication will be via cell phones and walkie talkies on location.

Based on concentrations of offset wells, proximity to main roads, and distance to populated areas, the radius of exposure created by a potential release was determined to be minimal and low enough to not necessitate an H2S contingency plan. This will be reevaluated during wellbore construction if H2S is observed and after the well is on production.





**11. Anticipated starting date and duration of operations:**

The drilling operations on the well should be finished in approximately one month. However, in order to minimize disturbance in the area and to improve efficiency Franklin Mountain is planning to drill all the wells on the pad prior to commence completion operations. To even further reduce the time heavy machinery is used the "batch drilling" method may be used. A batch drilling sequence sundry will be submitted for State approval prior to spud. A drilling rig with walking/skidding capabilities will be used.

**12. Disposal/environmental concerns:**

- (A) Drilled cuttings will be hauled to and disposed of in a state-certified disposal site.
- (B) Non-hazardous waste mud/cement from the drilling process will also be hauled to and disposed of in a state-certified disposal site.
- (C) Garbage will be hauled to the Pecos City Landfill.
- (D) Sewage (grey water) will be hauled to the Carlsbad City Landfill

**13. Wellhead:**

A multi-bowl wellhead system will be utilized.

After running the 13 3/8" surface casing, a 13-5/8" BOP/BOPE system with a minimum working pressure of 10,000 psi will be installed on the wellhead system and will be pressure tested to 250 psi low followed by a 5,000 psi pressure test. This pressure test will be repeated at least every 30 days.

The minimum working pressure of the BOP and related BOPE required for drilling below the surface casing shoe shall be 5,000 psi.

The wellhead will be installed by a third party welder while being monitored by WH vendor's representative.

All BOP equipment will be tested utilizing a conventional test plug. Not a cup or J-packer type.

A solid steel body pack-off will be utilized after running and cementing the intermediate casing string. After installation of the first intermediate string the pack-off and lower flanges will be pressure tested to 5000 psi.

Both the surface and intermediate casing strings will be tested as per NMOCD Rules to the one-third of manufacture's rated yield pressure, no less than 600 psi, but not greater than 1,500 psi.

**14. Additional variance requests**

- A. Casing.
  - 1. Variance is requested to wave/reduce the centralizer requirements for the 7" and 5 1/2" production casing due to the tight clearance with 8 3/4" hole.



# Franklin Mountain Energy LLC

PV\_Lea County, NM(N83-NME3001)

Eagle Norte East Pad

(B04) Norte State Com 604H - Slot NSC 604H

604H

Plan: APD-Rev01

## Standard Planning Report

23 February, 2024



Planning Report

|                  |                                |                                     |                                                 |
|------------------|--------------------------------|-------------------------------------|-------------------------------------------------|
| <b>Database:</b> | TZ USA 17.2                    | <b>Local Co-ordinate Reference:</b> | Well (B04) Norte State Com 604H - Slot NSC 604H |
| <b>Company:</b>  | Franklin Mountain Energy LLC   | <b>TVD Reference:</b>               | 3826+30 @ 3856.00usft                           |
| <b>Project:</b>  | PV_Lea County, NM(N83-NME3001) | <b>MD Reference:</b>                | 3826+30 @ 3856.00usft                           |
| <b>Site:</b>     | Eagle Norte East Pad           | <b>North Reference:</b>             | Grid                                            |
| <b>Well:</b>     | (B04) Norte State Com 604H     | <b>Survey Calculation Method:</b>   | Minimum Curvature                               |
| <b>Wellbore:</b> | 604H                           |                                     |                                                 |
| <b>Design:</b>   | APD-Rev01                      |                                     |                                                 |

|                    |                                |                      |                |
|--------------------|--------------------------------|----------------------|----------------|
| <b>Project</b>     | PV_Lea County, NM(N83-NME3001) |                      |                |
| <b>Map System:</b> | US State Plane 1983            | <b>System Datum:</b> | Mean Sea Level |
| <b>Geo Datum:</b>  | North American Datum 1983      |                      |                |
| <b>Map Zone:</b>   | New Mexico Eastern Zone        |                      |                |

|                              |                      |                     |                 |                   |               |
|------------------------------|----------------------|---------------------|-----------------|-------------------|---------------|
| <b>Site</b>                  | Eagle Norte East Pad |                     |                 |                   |               |
| <b>Site Position:</b>        |                      | <b>Northing:</b>    | 617,732.10 usft | <b>Latitude:</b>  | 32.69501447   |
| <b>From:</b>                 | Map                  | <b>Easting:</b>     | 815,829.07 usft | <b>Longitude:</b> | -103.44106139 |
| <b>Position Uncertainty:</b> | 0.00 usft            | <b>Slot Radius:</b> | 13-3/16 "       |                   |               |

|                             |                                            |           |                            |                 |                      |               |
|-----------------------------|--------------------------------------------|-----------|----------------------------|-----------------|----------------------|---------------|
| <b>Well</b>                 | (B04) Norte State Com 604H - Slot NSC 604H |           |                            |                 |                      |               |
| <b>Well Position</b>        | <b>+N-S</b>                                | 0.00 usft | <b>Northing:</b>           | 617,632.66 usft | <b>Latitude:</b>     | 32.69473873   |
|                             | <b>+E-W</b>                                | 0.00 usft | <b>Easting:</b>            | 815,934.56 usft | <b>Longitude:</b>    | -103.44072124 |
| <b>Position Uncertainty</b> | 0.00 usft                                  |           | <b>Wellhead Elevation:</b> | usft            | <b>Ground Level:</b> | 3,826.00 usft |
| <b>Grid Convergence:</b>    | 0.48 °                                     |           |                            |                 |                      |               |

|                  |                   |                    |                        |                      |                            |
|------------------|-------------------|--------------------|------------------------|----------------------|----------------------------|
| <b>Wellbore</b>  | 604H              |                    |                        |                      |                            |
| <b>Magnetics</b> | <b>Model Name</b> | <b>Sample Date</b> | <b>Declination (°)</b> | <b>Dip Angle (°)</b> | <b>Field Strength (nT)</b> |
|                  | IGRF2020          | 2/20/2024          | 6.20                   | 60.25                | 47,501.60016141            |

|                          |                                |                    |                      |                      |
|--------------------------|--------------------------------|--------------------|----------------------|----------------------|
| <b>Design</b>            | APD-Rev01                      |                    |                      |                      |
| <b>Audit Notes:</b>      |                                |                    |                      |                      |
| <b>Version:</b>          | <b>Phase:</b>                  | PLAN               | <b>Tie On Depth:</b> | 0.00                 |
| <b>Vertical Section:</b> | <b>Depth From (TVD) (usft)</b> | <b>+N-S (usft)</b> | <b>+E-W (usft)</b>   | <b>Direction (°)</b> |
|                          | 0.00                           | 0.00               | 0.00                 | 359.54               |

|                                 |                        |                            |                            |                |
|---------------------------------|------------------------|----------------------------|----------------------------|----------------|
| <b>Plan Survey Tool Program</b> | <b>Date</b>            | 2/23/2024                  |                            |                |
| <b>Depth From (usft)</b>        | <b>Depth To (usft)</b> | <b>Survey (Wellbore)</b>   | <b>Tool Name</b>           | <b>Remarks</b> |
| 1                               | 0.00                   | 20,806.64 APD-Rev01 (604H) | MWD+IFR1+MS                |                |
|                                 |                        |                            | OWSG MWD + IFR1 + Multi-SI |                |



Planning Report

|                  |                                |                                     |                                                 |
|------------------|--------------------------------|-------------------------------------|-------------------------------------------------|
| <b>Database:</b> | TZ USA 17.2                    | <b>Local Co-ordinate Reference:</b> | Well (B04) Norte State Com 604H - Slot NSC 604H |
| <b>Company:</b>  | Franklin Mountain Energy LLC   | <b>TVD Reference:</b>               | 3826+30 @ 3856.00usft                           |
| <b>Project:</b>  | PV_Lea County, NM(N83-NME3001) | <b>MD Reference:</b>                | 3826+30 @ 3856.00usft                           |
| <b>Site:</b>     | Eagle Norte East Pad           | <b>North Reference:</b>             | Grid                                            |
| <b>Well:</b>     | (B04) Norte State Com 604H     | <b>Survey Calculation Method:</b>   | Minimum Curvature                               |
| <b>Wellbore:</b> | 604H                           |                                     |                                                 |
| <b>Design:</b>   | APD-Rev01                      |                                     |                                                 |

| Plan Sections         |                 |             |                       |              |              |                         |                        |                       |         |                   |
|-----------------------|-----------------|-------------|-----------------------|--------------|--------------|-------------------------|------------------------|-----------------------|---------|-------------------|
| Measured Depth (usft) | Inclination (°) | Azimuth (°) | Vertical Depth (usft) | +N/-S (usft) | +E/-W (usft) | Dogleg Rate (°/100usft) | Build Rate (°/100usft) | Turn Rate (°/100usft) | TFO (°) | Target            |
| 0.00                  | 0.00            | 0.00        | 0.00                  | 0.00         | 0.00         | 0.00                    | 0.00                   | 0.00                  | 0.00    |                   |
| 1,500.00              | 0.00            | 0.00        | 1,500.00              | 0.00         | 0.00         | 0.00                    | 0.00                   | 0.00                  | 0.00    |                   |
| 2,058.64              | 8.38            | 74.40       | 2,056.65              | 10.97        | 39.28        | 1.50                    | 1.50                   | 0.00                  | 74.40   |                   |
| 6,716.75              | 8.38            | 74.40       | 6,665.03              | 193.55       | 693.09       | 0.00                    | 0.00                   | 0.00                  | 0.00    |                   |
| 7,554.70              | 0.00            | 0.00        | 7,500.00              | 210.00       | 752.00       | 1.00                    | -1.00                  | 0.00                  | 180.00  |                   |
| 9,454.74              | 0.00            | 0.00        | 9,400.04              | 210.00       | 752.00       | 0.00                    | 0.00                   | 0.00                  | 0.00    |                   |
| 10,354.74             | 90.00           | 10.45       | 9,973.00              | 773.45       | 855.92       | 10.00                   | 10.00                  | 0.00                  | 10.45   |                   |
| 10,900.27             | 90.00           | 359.54      | 9,973.00              | 1,316.09     | 903.35       | 2.00                    | 0.00                   | -2.00                 | -90.00  |                   |
| 20,806.64             | 90.00           | 359.54      | 9,973.00              | 11,222.14    | 823.72       | 0.00                    | 0.00                   | 0.00                  | 0.00    | 02-PBHL(NSC 604H) |



Planning Report

|                  |                                |                                     |                                                 |
|------------------|--------------------------------|-------------------------------------|-------------------------------------------------|
| <b>Database:</b> | TZ USA 17.2                    | <b>Local Co-ordinate Reference:</b> | Well (B04) Norte State Com 604H - Slot NSC 604H |
| <b>Company:</b>  | Franklin Mountain Energy LLC   | <b>TVD Reference:</b>               | 3826+30 @ 3856.00usft                           |
| <b>Project:</b>  | PV_Lea County, NM(N83-NME3001) | <b>MD Reference:</b>                | 3826+30 @ 3856.00usft                           |
| <b>Site:</b>     | Eagle Norte East Pad           | <b>North Reference:</b>             | Grid                                            |
| <b>Well:</b>     | (B04) Norte State Com 604H     | <b>Survey Calculation Method:</b>   | Minimum Curvature                               |
| <b>Wellbore:</b> | 604H                           |                                     |                                                 |
| <b>Design:</b>   | APD-Rev01                      |                                     |                                                 |

| Planned Survey                     |                 |             |                       |              |              |                         |                         |                        |                       |      |
|------------------------------------|-----------------|-------------|-----------------------|--------------|--------------|-------------------------|-------------------------|------------------------|-----------------------|------|
| Measured Depth (usft)              | Inclination (°) | Azimuth (°) | Vertical Depth (usft) | +N/-S (usft) | +E/-W (usft) | Vertical Section (usft) | Dogleg Rate (°/100usft) | Build Rate (°/100usft) | Turn Rate (°/100usft) |      |
| 0.00                               | 0.00            | 0.00        | 0.00                  | 0.00         | 0.00         | 0.00                    | 0.00                    | 0.00                   | 0.00                  | 0.00 |
| 30.00                              | 0.00            | 0.00        | 30.00                 | 0.00         | 0.00         | 0.00                    | 0.00                    | 0.00                   | 0.00                  | 0.00 |
| <b>Cenozoic Alluvium (surface)</b> |                 |             |                       |              |              |                         |                         |                        |                       |      |
| 100.00                             | 0.00            | 0.00        | 100.00                | 0.00         | 0.00         | 0.00                    | 0.00                    | 0.00                   | 0.00                  | 0.00 |
| 200.00                             | 0.00            | 0.00        | 200.00                | 0.00         | 0.00         | 0.00                    | 0.00                    | 0.00                   | 0.00                  | 0.00 |
| 300.00                             | 0.00            | 0.00        | 300.00                | 0.00         | 0.00         | 0.00                    | 0.00                    | 0.00                   | 0.00                  | 0.00 |
| 400.00                             | 0.00            | 0.00        | 400.00                | 0.00         | 0.00         | 0.00                    | 0.00                    | 0.00                   | 0.00                  | 0.00 |
| 500.00                             | 0.00            | 0.00        | 500.00                | 0.00         | 0.00         | 0.00                    | 0.00                    | 0.00                   | 0.00                  | 0.00 |
| 600.00                             | 0.00            | 0.00        | 600.00                | 0.00         | 0.00         | 0.00                    | 0.00                    | 0.00                   | 0.00                  | 0.00 |
| 700.00                             | 0.00            | 0.00        | 700.00                | 0.00         | 0.00         | 0.00                    | 0.00                    | 0.00                   | 0.00                  | 0.00 |
| 800.00                             | 0.00            | 0.00        | 800.00                | 0.00         | 0.00         | 0.00                    | 0.00                    | 0.00                   | 0.00                  | 0.00 |
| 900.00                             | 0.00            | 0.00        | 900.00                | 0.00         | 0.00         | 0.00                    | 0.00                    | 0.00                   | 0.00                  | 0.00 |
| 1,000.00                           | 0.00            | 0.00        | 1,000.00              | 0.00         | 0.00         | 0.00                    | 0.00                    | 0.00                   | 0.00                  | 0.00 |
| 1,100.00                           | 0.00            | 0.00        | 1,100.00              | 0.00         | 0.00         | 0.00                    | 0.00                    | 0.00                   | 0.00                  | 0.00 |
| 1,200.00                           | 0.00            | 0.00        | 1,200.00              | 0.00         | 0.00         | 0.00                    | 0.00                    | 0.00                   | 0.00                  | 0.00 |
| 1,300.00                           | 0.00            | 0.00        | 1,300.00              | 0.00         | 0.00         | 0.00                    | 0.00                    | 0.00                   | 0.00                  | 0.00 |
| 1,400.00                           | 0.00            | 0.00        | 1,400.00              | 0.00         | 0.00         | 0.00                    | 0.00                    | 0.00                   | 0.00                  | 0.00 |
| 1,500.00                           | 0.00            | 0.00        | 1,500.00              | 0.00         | 0.00         | 0.00                    | 0.00                    | 0.00                   | 0.00                  | 0.00 |
| 1,600.00                           | 1.50            | 74.40       | 1,599.99              | 0.35         | 1.26         | 0.34                    | 1.50                    | 1.50                   | 1.50                  | 0.00 |
| 1,700.00                           | 3.00            | 74.40       | 1,699.91              | 1.41         | 5.04         | 1.37                    | 1.50                    | 1.50                   | 1.50                  | 0.00 |
| 1,798.30                           | 4.47            | 74.40       | 1,798.00              | 3.13         | 11.21        | 3.04                    | 1.50                    | 1.50                   | 1.50                  | 0.00 |
| <b>Rustler</b>                     |                 |             |                       |              |              |                         |                         |                        |                       |      |
| 1,800.00                           | 4.50            | 74.40       | 1,799.69              | 3.17         | 11.34        | 3.08                    | 1.50                    | 1.50                   | 1.50                  | 0.00 |
| 1,900.00                           | 6.00            | 74.40       | 1,899.27              | 5.63         | 20.15        | 5.47                    | 1.50                    | 1.50                   | 1.50                  | 0.00 |
| 2,000.00                           | 7.50            | 74.40       | 1,998.57              | 8.79         | 31.47        | 8.54                    | 1.50                    | 1.50                   | 1.50                  | 0.00 |
| 2,035.75                           | 8.04            | 74.40       | 2,034.00              | 10.09        | 36.13        | 9.80                    | 1.50                    | 1.50                   | 1.50                  | 0.00 |
| <b>Salado</b>                      |                 |             |                       |              |              |                         |                         |                        |                       |      |
| 2,058.64                           | 8.38            | 74.40       | 2,056.65              | 10.97        | 39.28        | 10.65                   | 1.50                    | 1.50                   | 1.50                  | 0.00 |
| 2,100.00                           | 8.38            | 74.40       | 2,097.57              | 12.59        | 45.08        | 12.23                   | 0.00                    | 0.00                   | 0.00                  | 0.00 |
| 2,200.00                           | 8.38            | 74.40       | 2,196.50              | 16.51        | 59.12        | 16.03                   | 0.00                    | 0.00                   | 0.00                  | 0.00 |
| 2,300.00                           | 8.38            | 74.40       | 2,295.43              | 20.43        | 73.15        | 19.84                   | 0.00                    | 0.00                   | 0.00                  | 0.00 |
| 2,400.00                           | 8.38            | 74.40       | 2,394.37              | 24.35        | 87.19        | 23.65                   | 0.00                    | 0.00                   | 0.00                  | 0.00 |
| 2,500.00                           | 8.38            | 74.40       | 2,493.30              | 28.27        | 101.22       | 27.45                   | 0.00                    | 0.00                   | 0.00                  | 0.00 |
| 2,600.00                           | 8.38            | 74.40       | 2,592.23              | 32.19        | 115.26       | 31.26                   | 0.00                    | 0.00                   | 0.00                  | 0.00 |
| 2,700.00                           | 8.38            | 74.40       | 2,691.16              | 36.11        | 129.30       | 35.07                   | 0.00                    | 0.00                   | 0.00                  | 0.00 |
| 2,800.00                           | 8.38            | 74.40       | 2,790.10              | 40.03        | 143.33       | 38.87                   | 0.00                    | 0.00                   | 0.00                  | 0.00 |
| 2,900.00                           | 8.38            | 74.40       | 2,889.03              | 43.95        | 157.37       | 42.68                   | 0.00                    | 0.00                   | 0.00                  | 0.00 |
| 3,000.00                           | 8.38            | 74.40       | 2,987.96              | 47.87        | 171.40       | 46.49                   | 0.00                    | 0.00                   | 0.00                  | 0.00 |
| 3,100.00                           | 8.38            | 74.40       | 3,086.89              | 51.79        | 185.44       | 50.29                   | 0.00                    | 0.00                   | 0.00                  | 0.00 |
| 3,165.81                           | 8.38            | 74.40       | 3,152.00              | 54.36        | 194.68       | 52.80                   | 0.00                    | 0.00                   | 0.00                  | 0.00 |
| <b>Base Salt</b>                   |                 |             |                       |              |              |                         |                         |                        |                       |      |
| 3,200.00                           | 8.38            | 74.40       | 3,185.83              | 55.70        | 199.48       | 54.10                   | 0.00                    | 0.00                   | 0.00                  | 0.00 |
| 3,300.00                           | 8.38            | 74.40       | 3,284.76              | 59.62        | 213.51       | 57.91                   | 0.00                    | 0.00                   | 0.00                  | 0.00 |
| 3,336.63                           | 8.38            | 74.40       | 3,321.00              | 61.06        | 218.65       | 59.30                   | 0.00                    | 0.00                   | 0.00                  | 0.00 |
| <b>Yates</b>                       |                 |             |                       |              |              |                         |                         |                        |                       |      |
| 3,400.00                           | 8.38            | 74.40       | 3,383.69              | 63.54        | 227.55       | 61.72                   | 0.00                    | 0.00                   | 0.00                  | 0.00 |
| 3,500.00                           | 8.38            | 74.40       | 3,482.62              | 67.46        | 241.58       | 65.52                   | 0.00                    | 0.00                   | 0.00                  | 0.00 |
| 3,600.00                           | 8.38            | 74.40       | 3,581.56              | 71.38        | 255.62       | 69.33                   | 0.00                    | 0.00                   | 0.00                  | 0.00 |
| 3,700.00                           | 8.38            | 74.40       | 3,680.49              | 75.30        | 269.66       | 73.14                   | 0.00                    | 0.00                   | 0.00                  | 0.00 |
| 3,776.33                           | 8.38            | 74.40       | 3,756.00              | 78.29        | 280.37       | 76.04                   | 0.00                    | 0.00                   | 0.00                  | 0.00 |
| <b>Seven Rivers</b>                |                 |             |                       |              |              |                         |                         |                        |                       |      |
| 3,800.00                           | 8.38            | 74.40       | 3,779.42              | 79.22        | 283.69       | 76.94                   | 0.00                    | 0.00                   | 0.00                  | 0.00 |



Planning Report

|                  |                                |                                     |                                                 |
|------------------|--------------------------------|-------------------------------------|-------------------------------------------------|
| <b>Database:</b> | TZ USA 17.2                    | <b>Local Co-ordinate Reference:</b> | Well (B04) Norte State Com 604H - Slot NSC 604H |
| <b>Company:</b>  | Franklin Mountain Energy LLC   | <b>TVD Reference:</b>               | 3826+30 @ 3856.00usft                           |
| <b>Project:</b>  | PV_Lea County, NM(N83-NME3001) | <b>MD Reference:</b>                | 3826+30 @ 3856.00usft                           |
| <b>Site:</b>     | Eagle Norte East Pad           | <b>North Reference:</b>             | Grid                                            |
| <b>Well:</b>     | (B04) Norte State Com 604H     | <b>Survey Calculation Method:</b>   | Minimum Curvature                               |
| <b>Wellbore:</b> | 604H                           |                                     |                                                 |
| <b>Design:</b>   | APD-Rev01                      |                                     |                                                 |

| Planned Survey            |                 |             |                       |              |              |                         |                         |                        |                       |  |
|---------------------------|-----------------|-------------|-----------------------|--------------|--------------|-------------------------|-------------------------|------------------------|-----------------------|--|
| Measured Depth (usft)     | Inclination (°) | Azimuth (°) | Vertical Depth (usft) | +N/-S (usft) | +E/-W (usft) | Vertical Section (usft) | Dogleg Rate (°/100usft) | Build Rate (°/100usft) | Turn Rate (°/100usft) |  |
| 3,900.00                  | 8.38            | 74.40       | 3,878.35              | 83.14        | 297.73       | 80.75                   | 0.00                    | 0.00                   | 0.00                  |  |
| 4,000.00                  | 8.38            | 74.40       | 3,977.29              | 87.06        | 311.76       | 84.56                   | 0.00                    | 0.00                   | 0.00                  |  |
| 4,100.00                  | 8.38            | 74.40       | 4,076.22              | 90.98        | 325.80       | 88.36                   | 0.00                    | 0.00                   | 0.00                  |  |
| 4,200.00                  | 8.38            | 74.40       | 4,175.15              | 94.90        | 339.84       | 92.17                   | 0.00                    | 0.00                   | 0.00                  |  |
| 4,300.00                  | 8.38            | 74.40       | 4,274.08              | 98.82        | 353.87       | 95.98                   | 0.00                    | 0.00                   | 0.00                  |  |
| 4,400.00                  | 8.38            | 74.40       | 4,373.02              | 102.74       | 367.91       | 99.78                   | 0.00                    | 0.00                   | 0.00                  |  |
| 4,500.00                  | 8.38            | 74.40       | 4,471.95              | 106.66       | 381.94       | 103.59                  | 0.00                    | 0.00                   | 0.00                  |  |
| 4,539.47                  | 8.38            | 74.40       | 4,511.00              | 108.21       | 387.49       | 105.09                  | 0.00                    | 0.00                   | 0.00                  |  |
| <b>Queen</b>              |                 |             |                       |              |              |                         |                         |                        |                       |  |
| 4,600.00                  | 8.38            | 74.40       | 4,570.88              | 110.58       | 395.98       | 107.40                  | 0.00                    | 0.00                   | 0.00                  |  |
| 4,700.00                  | 8.38            | 74.40       | 4,669.81              | 114.50       | 410.02       | 111.20                  | 0.00                    | 0.00                   | 0.00                  |  |
| 4,800.00                  | 8.38            | 74.40       | 4,768.75              | 118.42       | 424.05       | 115.01                  | 0.00                    | 0.00                   | 0.00                  |  |
| 4,900.00                  | 8.38            | 74.40       | 4,867.68              | 122.34       | 438.09       | 118.82                  | 0.00                    | 0.00                   | 0.00                  |  |
| 5,000.00                  | 8.38            | 74.40       | 4,966.61              | 126.26       | 452.12       | 122.62                  | 0.00                    | 0.00                   | 0.00                  |  |
| 5,100.00                  | 8.38            | 74.40       | 5,065.54              | 130.18       | 466.16       | 126.43                  | 0.00                    | 0.00                   | 0.00                  |  |
| 5,200.00                  | 8.38            | 74.40       | 5,164.47              | 134.10       | 480.20       | 130.24                  | 0.00                    | 0.00                   | 0.00                  |  |
| 5,300.00                  | 8.38            | 74.40       | 5,263.41              | 138.02       | 494.23       | 134.04                  | 0.00                    | 0.00                   | 0.00                  |  |
| 5,400.00                  | 8.38            | 74.40       | 5,362.34              | 141.94       | 508.27       | 137.85                  | 0.00                    | 0.00                   | 0.00                  |  |
| 5,500.00                  | 8.38            | 74.40       | 5,461.27              | 145.86       | 522.30       | 141.66                  | 0.00                    | 0.00                   | 0.00                  |  |
| 5,600.00                  | 8.38            | 74.40       | 5,560.20              | 149.78       | 536.34       | 145.47                  | 0.00                    | 0.00                   | 0.00                  |  |
| 5,700.00                  | 8.38            | 74.40       | 5,659.14              | 153.70       | 550.38       | 149.27                  | 0.00                    | 0.00                   | 0.00                  |  |
| 5,800.00                  | 8.38            | 74.40       | 5,758.07              | 157.62       | 564.41       | 153.08                  | 0.00                    | 0.00                   | 0.00                  |  |
| 5,900.00                  | 8.38            | 74.40       | 5,857.00              | 161.53       | 578.45       | 156.89                  | 0.00                    | 0.00                   | 0.00                  |  |
| 6,000.00                  | 8.38            | 74.40       | 5,955.93              | 165.45       | 592.48       | 160.69                  | 0.00                    | 0.00                   | 0.00                  |  |
| 6,100.00                  | 8.38            | 74.40       | 6,054.87              | 169.37       | 606.52       | 164.50                  | 0.00                    | 0.00                   | 0.00                  |  |
| 6,114.29                  | 8.38            | 74.40       | 6,069.00              | 169.93       | 608.53       | 165.04                  | 0.00                    | 0.00                   | 0.00                  |  |
| <b>Delaware Mtn Group</b> |                 |             |                       |              |              |                         |                         |                        |                       |  |
| 6,200.00                  | 8.38            | 74.40       | 6,153.80              | 173.29       | 620.56       | 168.31                  | 0.00                    | 0.00                   | 0.00                  |  |
| 6,300.00                  | 8.38            | 74.40       | 6,252.73              | 177.21       | 634.59       | 172.11                  | 0.00                    | 0.00                   | 0.00                  |  |
| 6,400.00                  | 8.38            | 74.40       | 6,351.66              | 181.13       | 648.63       | 175.92                  | 0.00                    | 0.00                   | 0.00                  |  |
| 6,500.00                  | 8.38            | 74.40       | 6,450.60              | 185.05       | 662.66       | 179.73                  | 0.00                    | 0.00                   | 0.00                  |  |
| 6,600.00                  | 8.38            | 74.40       | 6,549.53              | 188.97       | 676.70       | 183.53                  | 0.00                    | 0.00                   | 0.00                  |  |
| 6,700.00                  | 8.38            | 74.40       | 6,648.46              | 192.89       | 690.74       | 187.34                  | 0.00                    | 0.00                   | 0.00                  |  |
| 6,716.75                  | 8.38            | 74.40       | 6,665.03              | 193.55       | 693.09       | 187.98                  | 0.00                    | 0.00                   | 0.00                  |  |
| 6,800.00                  | 7.55            | 74.40       | 6,747.48              | 196.65       | 704.20       | 190.99                  | 1.00                    | -1.00                  | 0.00                  |  |
| 6,900.00                  | 6.55            | 74.40       | 6,846.72              | 199.95       | 716.01       | 194.20                  | 1.00                    | -1.00                  | 0.00                  |  |
| 7,000.00                  | 5.55            | 74.40       | 6,946.16              | 202.78       | 726.16       | 196.95                  | 1.00                    | -1.00                  | 0.00                  |  |
| 7,100.00                  | 4.55            | 74.40       | 7,045.78              | 205.15       | 734.63       | 199.25                  | 1.00                    | -1.00                  | 0.00                  |  |
| 7,200.00                  | 3.55            | 74.40       | 7,145.53              | 207.05       | 741.43       | 201.09                  | 1.00                    | -1.00                  | 0.00                  |  |
| 7,300.00                  | 2.55            | 74.40       | 7,245.38              | 208.48       | 746.55       | 202.48                  | 1.00                    | -1.00                  | 0.00                  |  |
| 7,356.66                  | 1.98            | 74.40       | 7,302.00              | 209.08       | 748.70       | 203.06                  | 1.00                    | -1.00                  | 0.00                  |  |
| <b>Bone Spring Lime</b>   |                 |             |                       |              |              |                         |                         |                        |                       |  |
| 7,400.00                  | 1.55            | 74.40       | 7,345.32              | 209.44       | 749.99       | 203.41                  | 1.00                    | -1.00                  | 0.00                  |  |
| 7,500.00                  | 0.55            | 74.40       | 7,445.30              | 209.93       | 751.75       | 203.89                  | 1.00                    | -1.00                  | 0.00                  |  |
| 7,554.70                  | 0.00            | 0.00        | 7,500.00              | 210.00       | 752.00       | 203.96                  | 1.00                    | -1.00                  | 0.00                  |  |
| 7,600.00                  | 0.00            | 0.00        | 7,545.30              | 210.00       | 752.00       | 203.96                  | 0.00                    | 0.00                   | 0.00                  |  |
| 7,700.00                  | 0.00            | 0.00        | 7,645.30              | 210.00       | 752.00       | 203.96                  | 0.00                    | 0.00                   | 0.00                  |  |
| 7,800.00                  | 0.00            | 0.00        | 7,745.30              | 210.00       | 752.00       | 203.96                  | 0.00                    | 0.00                   | 0.00                  |  |
| 7,900.00                  | 0.00            | 0.00        | 7,845.30              | 210.00       | 752.00       | 203.96                  | 0.00                    | 0.00                   | 0.00                  |  |
| 8,000.00                  | 0.00            | 0.00        | 7,945.30              | 210.00       | 752.00       | 203.96                  | 0.00                    | 0.00                   | 0.00                  |  |
| 8,100.00                  | 0.00            | 0.00        | 8,045.30              | 210.00       | 752.00       | 203.96                  | 0.00                    | 0.00                   | 0.00                  |  |
| 8,200.00                  | 0.00            | 0.00        | 8,145.30              | 210.00       | 752.00       | 203.96                  | 0.00                    | 0.00                   | 0.00                  |  |



Planning Report

|                  |                                |                                     |                                                 |
|------------------|--------------------------------|-------------------------------------|-------------------------------------------------|
| <b>Database:</b> | TZ USA 17.2                    | <b>Local Co-ordinate Reference:</b> | Well (B04) Norte State Com 604H - Slot NSC 604H |
| <b>Company:</b>  | Franklin Mountain Energy LLC   | <b>TVD Reference:</b>               | 3826+30 @ 3856.00usft                           |
| <b>Project:</b>  | PV_Lea County, NM(N83-NME3001) | <b>MD Reference:</b>                | 3826+30 @ 3856.00usft                           |
| <b>Site:</b>     | Eagle Norte East Pad           | <b>North Reference:</b>             | Grid                                            |
| <b>Well:</b>     | (B04) Norte State Com 604H     | <b>Survey Calculation Method:</b>   | Minimum Curvature                               |
| <b>Wellbore:</b> | 604H                           |                                     |                                                 |
| <b>Design:</b>   | APD-Rev01                      |                                     |                                                 |

| Planned Survey                                                |                 |             |                       |              |              |                         |                         |                        |                       |  |
|---------------------------------------------------------------|-----------------|-------------|-----------------------|--------------|--------------|-------------------------|-------------------------|------------------------|-----------------------|--|
| Measured Depth (usft)                                         | Inclination (°) | Azimuth (°) | Vertical Depth (usft) | +N/-S (usft) | +E/-W (usft) | Vertical Section (usft) | Dogleg Rate (°/100usft) | Build Rate (°/100usft) | Turn Rate (°/100usft) |  |
| 8,300.00                                                      | 0.00            | 0.00        | 8,245.30              | 210.00       | 752.00       | 203.96                  | 0.00                    | 0.00                   | 0.00                  |  |
| 8,400.00                                                      | 0.00            | 0.00        | 8,345.30              | 210.00       | 752.00       | 203.96                  | 0.00                    | 0.00                   | 0.00                  |  |
| 8,500.00                                                      | 0.00            | 0.00        | 8,445.30              | 210.00       | 752.00       | 203.96                  | 0.00                    | 0.00                   | 0.00                  |  |
| 8,600.00                                                      | 0.00            | 0.00        | 8,545.30              | 210.00       | 752.00       | 203.96                  | 0.00                    | 0.00                   | 0.00                  |  |
| 8,700.00                                                      | 0.00            | 0.00        | 8,645.30              | 210.00       | 752.00       | 203.96                  | 0.00                    | 0.00                   | 0.00                  |  |
| 8,800.00                                                      | 0.00            | 0.00        | 8,745.30              | 210.00       | 752.00       | 203.96                  | 0.00                    | 0.00                   | 0.00                  |  |
| 8,900.00                                                      | 0.00            | 0.00        | 8,845.30              | 210.00       | 752.00       | 203.96                  | 0.00                    | 0.00                   | 0.00                  |  |
| 8,943.70                                                      | 0.00            | 0.00        | 8,889.00              | 210.00       | 752.00       | 203.96                  | 0.00                    | 0.00                   | 0.00                  |  |
| <b>First Bone Spring Sand</b>                                 |                 |             |                       |              |              |                         |                         |                        |                       |  |
| 9,000.00                                                      | 0.00            | 0.00        | 8,945.30              | 210.00       | 752.00       | 203.96                  | 0.00                    | 0.00                   | 0.00                  |  |
| 9,100.00                                                      | 0.00            | 0.00        | 9,045.30              | 210.00       | 752.00       | 203.96                  | 0.00                    | 0.00                   | 0.00                  |  |
| 9,167.70                                                      | 0.00            | 0.00        | 9,113.00              | 210.00       | 752.00       | 203.96                  | 0.00                    | 0.00                   | 0.00                  |  |
| <b>Second Bone Spring Carbonate</b>                           |                 |             |                       |              |              |                         |                         |                        |                       |  |
| 9,200.00                                                      | 0.00            | 0.00        | 9,145.30              | 210.00       | 752.00       | 203.96                  | 0.00                    | 0.00                   | 0.00                  |  |
| 9,300.00                                                      | 0.00            | 0.00        | 9,245.30              | 210.00       | 752.00       | 203.96                  | 0.00                    | 0.00                   | 0.00                  |  |
| 9,313.70                                                      | 0.00            | 0.00        | 9,259.00              | 210.00       | 752.00       | 203.96                  | 0.00                    | 0.00                   | 0.00                  |  |
| <b>Second Bone Spring Sand</b>                                |                 |             |                       |              |              |                         |                         |                        |                       |  |
| 9,400.00                                                      | 0.00            | 0.00        | 9,345.30              | 210.00       | 752.00       | 203.96                  | 0.00                    | 0.00                   | 0.00                  |  |
| 9,454.74                                                      | 0.00            | 0.00        | 9,400.04              | 210.00       | 752.00       | 203.96                  | 0.00                    | 0.00                   | 0.00                  |  |
| <b>KOP: 9454.74' MD/ 203.96' VS/9400.04' TVD</b>              |                 |             |                       |              |              |                         |                         |                        |                       |  |
| 9,500.00                                                      | 4.53            | 10.45       | 9,445.25              | 211.76       | 752.32       | 205.71                  | 10.00                   | 10.00                  | 0.00                  |  |
| 9,550.00                                                      | 9.53            | 10.45       | 9,494.86              | 217.77       | 753.43       | 211.71                  | 10.00                   | 10.00                  | 0.00                  |  |
| 9,600.00                                                      | 14.53           | 10.45       | 9,543.75              | 228.01       | 755.32       | 221.94                  | 10.00                   | 10.00                  | 0.00                  |  |
| 9,650.00                                                      | 19.53           | 10.45       | 9,591.54              | 242.40       | 757.98       | 236.31                  | 10.00                   | 10.00                  | 0.00                  |  |
| 9,700.00                                                      | 24.53           | 10.45       | 9,637.88              | 260.84       | 761.38       | 254.72                  | 10.00                   | 10.00                  | 0.00                  |  |
| 9,750.00                                                      | 29.53           | 10.45       | 9,682.40              | 283.17       | 765.50       | 277.02                  | 10.00                   | 10.00                  | 0.00                  |  |
| 9,789.41                                                      | 33.47           | 10.45       | 9,716.00              | 303.42       | 769.23       | 297.23                  | 10.00                   | 10.00                  | 0.00                  |  |
| <b>Third Bone Spring Carbonate</b>                            |                 |             |                       |              |              |                         |                         |                        |                       |  |
| 9,800.00                                                      | 34.53           | 10.45       | 9,724.78              | 309.24       | 770.30       | 303.05                  | 10.00                   | 10.00                  | 0.00                  |  |
| 9,850.00                                                      | 39.53           | 10.45       | 9,764.69              | 338.84       | 775.76       | 332.60                  | 10.00                   | 10.00                  | 0.00                  |  |
| 9,900.00                                                      | 44.53           | 10.45       | 9,801.82              | 371.75       | 781.83       | 365.46                  | 10.00                   | 10.00                  | 0.00                  |  |
| 9,915.91                                                      | 46.12           | 10.45       | 9,813.00              | 382.87       | 783.88       | 376.57                  | 10.00                   | 10.00                  | 0.00                  |  |
| <b>Third Bone Spring Sand</b>                                 |                 |             |                       |              |              |                         |                         |                        |                       |  |
| 9,950.00                                                      | 49.53           | 10.45       | 9,835.89              | 407.71       | 788.47       | 401.37                  | 10.00                   | 10.00                  | 0.00                  |  |
| 10,000.00                                                     | 54.53           | 10.45       | 9,866.64              | 446.46       | 795.61       | 440.06                  | 10.00                   | 10.00                  | 0.00                  |  |
| 10,050.00                                                     | 59.53           | 10.45       | 9,893.85              | 487.70       | 803.22       | 481.23                  | 10.00                   | 10.00                  | 0.00                  |  |
| 10,100.00                                                     | 64.53           | 10.45       | 9,917.29              | 531.11       | 811.22       | 524.58                  | 10.00                   | 10.00                  | 0.00                  |  |
| 10,150.00                                                     | 69.53           | 10.45       | 9,936.80              | 576.37       | 819.57       | 569.77                  | 10.00                   | 10.00                  | 0.00                  |  |
| 10,200.00                                                     | 74.53           | 10.45       | 9,952.23              | 623.12       | 828.19       | 616.45                  | 10.00                   | 10.00                  | 0.00                  |  |
| 10,250.00                                                     | 79.53           | 10.45       | 9,963.45              | 671.02       | 837.03       | 664.28                  | 10.00                   | 10.00                  | 0.00                  |  |
| 10,300.00                                                     | 84.53           | 10.45       | 9,970.38              | 719.70       | 846.01       | 712.89                  | 10.00                   | 10.00                  | 0.00                  |  |
| 10,354.74                                                     | 90.00           | 10.45       | 9,973.00              | 773.45       | 855.92       | 766.56                  | 10.00                   | 10.00                  | 0.00                  |  |
| <b>EOC: 10354.74' MD/ 766.56' VS/9973.00' TVD - HZ Target</b> |                 |             |                       |              |              |                         |                         |                        |                       |  |
| 10,366.24                                                     | 90.00           | 10.22       | 9,973.00              | 784.77       | 857.98       | 777.85                  | 2.00                    | 0.00                   | -2.00                 |  |
| <b>100FLL: 10366.24' MD/ 777.85' VS/9973.00' TVD</b>          |                 |             |                       |              |              |                         |                         |                        |                       |  |
| 10,376.09                                                     | 90.00           | 10.02       | 9,973.00              | 794.47       | 859.72       | 787.54                  | 2.00                    | 0.00                   | -2.00                 |  |
| <b>01-T98(NSC 604H)</b>                                       |                 |             |                       |              |              |                         |                         |                        |                       |  |
| 10,400.00                                                     | 90.00           | 9.54        | 9,973.00              | 818.03       | 863.78       | 811.06                  | 2.00                    | 0.00                   | -2.00                 |  |
| 10,500.00                                                     | 90.00           | 7.54        | 9,973.00              | 916.91       | 878.64       | 909.83                  | 2.00                    | 0.00                   | -2.00                 |  |
| 10,600.00                                                     | 90.00           | 5.54        | 9,973.00              | 1,016.25     | 890.03       | 1,009.08                | 2.00                    | 0.00                   | -2.00                 |  |
| 10,700.00                                                     | 90.00           | 3.54        | 9,973.00              | 1,115.93     | 897.96       | 1,108.69                | 2.00                    | 0.00                   | -2.00                 |  |
| 10,800.00                                                     | 90.00           | 1.54        | 9,973.00              | 1,215.83     | 902.40       | 1,208.55                | 2.00                    | 0.00                   | -2.00                 |  |



Planning Report

|                  |                                |                                     |                                                 |
|------------------|--------------------------------|-------------------------------------|-------------------------------------------------|
| <b>Database:</b> | TZ USA 17.2                    | <b>Local Co-ordinate Reference:</b> | Well (B04) Norte State Com 604H - Slot NSC 604H |
| <b>Company:</b>  | Franklin Mountain Energy LLC   | <b>TVD Reference:</b>               | 3826+30 @ 3856.00usft                           |
| <b>Project:</b>  | PV_Lea County, NM(N83-NME3001) | <b>MD Reference:</b>                | 3826+30 @ 3856.00usft                           |
| <b>Site:</b>     | Eagle Norte East Pad           | <b>North Reference:</b>             | Grid                                            |
| <b>Well:</b>     | (B04) Norte State Com 604H     | <b>Survey Calculation Method:</b>   | Minimum Curvature                               |
| <b>Wellbore:</b> | 604H                           |                                     |                                                 |
| <b>Design:</b>   | APD-Rev01                      |                                     |                                                 |

| Planned Survey        |                 |             |                       |              |              |                         |                         |                        |                       |  |
|-----------------------|-----------------|-------------|-----------------------|--------------|--------------|-------------------------|-------------------------|------------------------|-----------------------|--|
| Measured Depth (usft) | Inclination (°) | Azimuth (°) | Vertical Depth (usft) | +N/-S (usft) | +E/-W (usft) | Vertical Section (usft) | Dogleg Rate (°/100usft) | Build Rate (°/100usft) | Turn Rate (°/100usft) |  |
| 10,900.27             | 90.00           | 359.54      | 9,973.00              | 1,316.09     | 903.35       | 1,308.79                | 2.00                    | 0.00                   | -2.00                 |  |
| 11,000.00             | 90.00           | 359.54      | 9,973.00              | 1,415.82     | 902.54       | 1,408.53                | 0.00                    | 0.00                   | 0.00                  |  |
| 11,100.00             | 90.00           | 359.54      | 9,973.00              | 1,515.81     | 901.74       | 1,508.53                | 0.00                    | 0.00                   | 0.00                  |  |
| 11,200.00             | 90.00           | 359.54      | 9,973.00              | 1,615.81     | 900.94       | 1,608.53                | 0.00                    | 0.00                   | 0.00                  |  |
| 11,300.00             | 90.00           | 359.54      | 9,973.00              | 1,715.81     | 900.13       | 1,708.53                | 0.00                    | 0.00                   | 0.00                  |  |
| 11,400.00             | 90.00           | 359.54      | 9,973.00              | 1,815.80     | 899.33       | 1,808.53                | 0.00                    | 0.00                   | 0.00                  |  |
| 11,500.00             | 90.00           | 359.54      | 9,973.00              | 1,915.80     | 898.53       | 1,908.53                | 0.00                    | 0.00                   | 0.00                  |  |
| 11,600.00             | 90.00           | 359.54      | 9,973.00              | 2,015.80     | 897.72       | 2,008.53                | 0.00                    | 0.00                   | 0.00                  |  |
| 11,700.00             | 90.00           | 359.54      | 9,973.00              | 2,115.79     | 896.92       | 2,108.53                | 0.00                    | 0.00                   | 0.00                  |  |
| 11,800.00             | 90.00           | 359.54      | 9,973.00              | 2,215.79     | 896.11       | 2,208.53                | 0.00                    | 0.00                   | 0.00                  |  |
| 11,900.00             | 90.00           | 359.54      | 9,973.00              | 2,315.79     | 895.31       | 2,308.53                | 0.00                    | 0.00                   | 0.00                  |  |
| 12,000.00             | 90.00           | 359.54      | 9,973.00              | 2,415.79     | 894.51       | 2,408.53                | 0.00                    | 0.00                   | 0.00                  |  |
| 12,100.00             | 90.00           | 359.54      | 9,973.00              | 2,515.78     | 893.70       | 2,508.53                | 0.00                    | 0.00                   | 0.00                  |  |
| 12,200.00             | 90.00           | 359.54      | 9,973.00              | 2,615.78     | 892.90       | 2,608.53                | 0.00                    | 0.00                   | 0.00                  |  |
| 12,300.00             | 90.00           | 359.54      | 9,973.00              | 2,715.78     | 892.09       | 2,708.53                | 0.00                    | 0.00                   | 0.00                  |  |
| 12,400.00             | 90.00           | 359.54      | 9,973.00              | 2,815.77     | 891.29       | 2,808.53                | 0.00                    | 0.00                   | 0.00                  |  |
| 12,500.00             | 90.00           | 359.54      | 9,973.00              | 2,915.77     | 890.49       | 2,908.53                | 0.00                    | 0.00                   | 0.00                  |  |
| 12,600.00             | 90.00           | 359.54      | 9,973.00              | 3,015.77     | 889.68       | 3,008.53                | 0.00                    | 0.00                   | 0.00                  |  |
| 12,700.00             | 90.00           | 359.54      | 9,973.00              | 3,115.76     | 888.88       | 3,108.53                | 0.00                    | 0.00                   | 0.00                  |  |
| 12,800.00             | 90.00           | 359.54      | 9,973.00              | 3,215.76     | 888.08       | 3,208.53                | 0.00                    | 0.00                   | 0.00                  |  |
| 12,900.00             | 90.00           | 359.54      | 9,973.00              | 3,315.76     | 887.27       | 3,308.53                | 0.00                    | 0.00                   | 0.00                  |  |
| 13,000.00             | 90.00           | 359.54      | 9,973.00              | 3,415.75     | 886.47       | 3,408.53                | 0.00                    | 0.00                   | 0.00                  |  |
| 13,100.00             | 90.00           | 359.54      | 9,973.00              | 3,515.75     | 885.66       | 3,508.53                | 0.00                    | 0.00                   | 0.00                  |  |
| 13,200.00             | 90.00           | 359.54      | 9,973.00              | 3,615.75     | 884.86       | 3,608.53                | 0.00                    | 0.00                   | 0.00                  |  |
| 13,300.00             | 90.00           | 359.54      | 9,973.00              | 3,715.74     | 884.06       | 3,708.53                | 0.00                    | 0.00                   | 0.00                  |  |
| 13,400.00             | 90.00           | 359.54      | 9,973.00              | 3,815.74     | 883.25       | 3,808.53                | 0.00                    | 0.00                   | 0.00                  |  |
| 13,500.00             | 90.00           | 359.54      | 9,973.00              | 3,915.74     | 882.45       | 3,908.53                | 0.00                    | 0.00                   | 0.00                  |  |
| 13,600.00             | 90.00           | 359.54      | 9,973.00              | 4,015.73     | 881.65       | 4,008.53                | 0.00                    | 0.00                   | 0.00                  |  |
| 13,700.00             | 90.00           | 359.54      | 9,973.00              | 4,115.73     | 880.84       | 4,108.53                | 0.00                    | 0.00                   | 0.00                  |  |
| 13,800.00             | 90.00           | 359.54      | 9,973.00              | 4,215.73     | 880.04       | 4,208.53                | 0.00                    | 0.00                   | 0.00                  |  |
| 13,900.00             | 90.00           | 359.54      | 9,973.00              | 4,315.72     | 879.23       | 4,308.53                | 0.00                    | 0.00                   | 0.00                  |  |
| 14,000.00             | 90.00           | 359.54      | 9,973.00              | 4,415.72     | 878.43       | 4,408.53                | 0.00                    | 0.00                   | 0.00                  |  |
| 14,100.00             | 90.00           | 359.54      | 9,973.00              | 4,515.72     | 877.63       | 4,508.53                | 0.00                    | 0.00                   | 0.00                  |  |
| 14,200.00             | 90.00           | 359.54      | 9,973.00              | 4,615.71     | 876.82       | 4,608.53                | 0.00                    | 0.00                   | 0.00                  |  |
| 14,300.00             | 90.00           | 359.54      | 9,973.00              | 4,715.71     | 876.02       | 4,708.53                | 0.00                    | 0.00                   | 0.00                  |  |
| 14,400.00             | 90.00           | 359.54      | 9,973.00              | 4,815.71     | 875.22       | 4,808.53                | 0.00                    | 0.00                   | 0.00                  |  |
| 14,500.00             | 90.00           | 359.54      | 9,973.00              | 4,915.70     | 874.41       | 4,908.53                | 0.00                    | 0.00                   | 0.00                  |  |
| 14,600.00             | 90.00           | 359.54      | 9,973.00              | 5,015.70     | 873.61       | 5,008.53                | 0.00                    | 0.00                   | 0.00                  |  |
| 14,700.00             | 90.00           | 359.54      | 9,973.00              | 5,115.70     | 872.80       | 5,108.53                | 0.00                    | 0.00                   | 0.00                  |  |
| 14,800.00             | 90.00           | 359.54      | 9,973.00              | 5,215.69     | 872.00       | 5,208.53                | 0.00                    | 0.00                   | 0.00                  |  |
| 14,900.00             | 90.00           | 359.54      | 9,973.00              | 5,315.69     | 871.20       | 5,308.53                | 0.00                    | 0.00                   | 0.00                  |  |
| 15,000.00             | 90.00           | 359.54      | 9,973.00              | 5,415.69     | 870.39       | 5,408.53                | 0.00                    | 0.00                   | 0.00                  |  |
| 15,100.00             | 90.00           | 359.54      | 9,973.00              | 5,515.69     | 869.59       | 5,508.53                | 0.00                    | 0.00                   | 0.00                  |  |
| 15,200.00             | 90.00           | 359.54      | 9,973.00              | 5,615.68     | 868.79       | 5,608.53                | 0.00                    | 0.00                   | 0.00                  |  |
| 15,300.00             | 90.00           | 359.54      | 9,973.00              | 5,715.68     | 867.98       | 5,708.53                | 0.00                    | 0.00                   | 0.00                  |  |
| 15,400.00             | 90.00           | 359.54      | 9,973.00              | 5,815.68     | 867.18       | 5,808.53                | 0.00                    | 0.00                   | 0.00                  |  |
| 15,500.00             | 90.00           | 359.54      | 9,973.00              | 5,915.67     | 866.37       | 5,908.53                | 0.00                    | 0.00                   | 0.00                  |  |
| 15,600.00             | 90.00           | 359.54      | 9,973.00              | 6,015.67     | 865.57       | 6,008.53                | 0.00                    | 0.00                   | 0.00                  |  |
| 15,700.00             | 90.00           | 359.54      | 9,973.00              | 6,115.67     | 864.77       | 6,108.53                | 0.00                    | 0.00                   | 0.00                  |  |
| 15,800.00             | 90.00           | 359.54      | 9,973.00              | 6,215.66     | 863.96       | 6,208.53                | 0.00                    | 0.00                   | 0.00                  |  |
| 15,900.00             | 90.00           | 359.54      | 9,973.00              | 6,315.66     | 863.16       | 6,308.53                | 0.00                    | 0.00                   | 0.00                  |  |
| 16,000.00             | 90.00           | 359.54      | 9,973.00              | 6,415.66     | 862.35       | 6,408.53                | 0.00                    | 0.00                   | 0.00                  |  |
| 16,100.00             | 90.00           | 359.54      | 9,973.00              | 6,515.65     | 861.55       | 6,508.53                | 0.00                    | 0.00                   | 0.00                  |  |





Planning Report

|                  |                                |                                     |                                                 |
|------------------|--------------------------------|-------------------------------------|-------------------------------------------------|
| <b>Database:</b> | TZ USA 17.2                    | <b>Local Co-ordinate Reference:</b> | Well (B04) Norte State Com 604H - Slot NSC 604H |
| <b>Company:</b>  | Franklin Mountain Energy LLC   | <b>TVD Reference:</b>               | 3826+30 @ 3856.00usft                           |
| <b>Project:</b>  | PV_Lea County, NM(N83-NME3001) | <b>MD Reference:</b>                | 3826+30 @ 3856.00usft                           |
| <b>Site:</b>     | Eagle Norte East Pad           | <b>North Reference:</b>             | Grid                                            |
| <b>Well:</b>     | (B04) Norte State Com 604H     | <b>Survey Calculation Method:</b>   | Minimum Curvature                               |
| <b>Wellbore:</b> | 604H                           |                                     |                                                 |
| <b>Design:</b>   | APD-Rev01                      |                                     |                                                 |

| Planned Survey                                                  |                 |             |                       |              |              |                         |                         |                        |                       |  |
|-----------------------------------------------------------------|-----------------|-------------|-----------------------|--------------|--------------|-------------------------|-------------------------|------------------------|-----------------------|--|
| Measured Depth (usft)                                           | Inclination (°) | Azimuth (°) | Vertical Depth (usft) | +N/-S (usft) | +E/-W (usft) | Vertical Section (usft) | Dogleg Rate (°/100usft) | Build Rate (°/100usft) | Turn Rate (°/100usft) |  |
| 16,200.00                                                       | 90.00           | 359.54      | 9,973.00              | 6,615.65     | 860.75       | 6,608.53                | 0.00                    | 0.00                   | 0.00                  |  |
| 16,300.00                                                       | 90.00           | 359.54      | 9,973.00              | 6,715.65     | 859.94       | 6,708.53                | 0.00                    | 0.00                   | 0.00                  |  |
| 16,400.00                                                       | 90.00           | 359.54      | 9,973.00              | 6,815.64     | 859.14       | 6,808.53                | 0.00                    | 0.00                   | 0.00                  |  |
| 16,500.00                                                       | 90.00           | 359.54      | 9,973.00              | 6,915.64     | 858.34       | 6,908.53                | 0.00                    | 0.00                   | 0.00                  |  |
| 16,600.00                                                       | 90.00           | 359.54      | 9,973.00              | 7,015.64     | 857.53       | 7,008.53                | 0.00                    | 0.00                   | 0.00                  |  |
| 16,700.00                                                       | 90.00           | 359.54      | 9,973.00              | 7,115.63     | 856.73       | 7,108.53                | 0.00                    | 0.00                   | 0.00                  |  |
| 16,800.00                                                       | 90.00           | 359.54      | 9,973.00              | 7,215.63     | 855.92       | 7,208.53                | 0.00                    | 0.00                   | 0.00                  |  |
| 16,900.00                                                       | 90.00           | 359.54      | 9,973.00              | 7,315.63     | 855.12       | 7,308.53                | 0.00                    | 0.00                   | 0.00                  |  |
| 17,000.00                                                       | 90.00           | 359.54      | 9,973.00              | 7,415.62     | 854.32       | 7,408.53                | 0.00                    | 0.00                   | 0.00                  |  |
| 17,100.00                                                       | 90.00           | 359.54      | 9,973.00              | 7,515.62     | 853.51       | 7,508.53                | 0.00                    | 0.00                   | 0.00                  |  |
| 17,200.00                                                       | 90.00           | 359.54      | 9,973.00              | 7,615.62     | 852.71       | 7,608.53                | 0.00                    | 0.00                   | 0.00                  |  |
| 17,300.00                                                       | 90.00           | 359.54      | 9,973.00              | 7,715.61     | 851.91       | 7,708.53                | 0.00                    | 0.00                   | 0.00                  |  |
| 17,400.00                                                       | 90.00           | 359.54      | 9,973.00              | 7,815.61     | 851.10       | 7,808.53                | 0.00                    | 0.00                   | 0.00                  |  |
| 17,500.00                                                       | 90.00           | 359.54      | 9,973.00              | 7,915.61     | 850.30       | 7,908.53                | 0.00                    | 0.00                   | 0.00                  |  |
| 17,600.00                                                       | 90.00           | 359.54      | 9,973.00              | 8,015.60     | 849.49       | 8,008.53                | 0.00                    | 0.00                   | 0.00                  |  |
| 17,700.00                                                       | 90.00           | 359.54      | 9,973.00              | 8,115.60     | 848.69       | 8,108.53                | 0.00                    | 0.00                   | 0.00                  |  |
| 17,800.00                                                       | 90.00           | 359.54      | 9,973.00              | 8,215.60     | 847.89       | 8,208.53                | 0.00                    | 0.00                   | 0.00                  |  |
| 17,900.00                                                       | 90.00           | 359.54      | 9,973.00              | 8,315.59     | 847.08       | 8,308.53                | 0.00                    | 0.00                   | 0.00                  |  |
| 18,000.00                                                       | 90.00           | 359.54      | 9,973.00              | 8,415.59     | 846.28       | 8,408.53                | 0.00                    | 0.00                   | 0.00                  |  |
| 18,100.00                                                       | 90.00           | 359.54      | 9,973.00              | 8,515.59     | 845.48       | 8,508.53                | 0.00                    | 0.00                   | 0.00                  |  |
| 18,200.00                                                       | 90.00           | 359.54      | 9,973.00              | 8,615.58     | 844.67       | 8,608.53                | 0.00                    | 0.00                   | 0.00                  |  |
| 18,300.00                                                       | 90.00           | 359.54      | 9,973.00              | 8,715.58     | 843.87       | 8,708.53                | 0.00                    | 0.00                   | 0.00                  |  |
| 18,400.00                                                       | 90.00           | 359.54      | 9,973.00              | 8,815.58     | 843.06       | 8,808.53                | 0.00                    | 0.00                   | 0.00                  |  |
| 18,500.00                                                       | 90.00           | 359.54      | 9,973.00              | 8,915.58     | 842.26       | 8,908.53                | 0.00                    | 0.00                   | 0.00                  |  |
| 18,600.00                                                       | 90.00           | 359.54      | 9,973.00              | 9,015.57     | 841.46       | 9,008.53                | 0.00                    | 0.00                   | 0.00                  |  |
| 18,700.00                                                       | 90.00           | 359.54      | 9,973.00              | 9,115.57     | 840.65       | 9,108.53                | 0.00                    | 0.00                   | 0.00                  |  |
| 18,800.00                                                       | 90.00           | 359.54      | 9,973.00              | 9,215.57     | 839.85       | 9,208.53                | 0.00                    | 0.00                   | 0.00                  |  |
| 18,900.00                                                       | 90.00           | 359.54      | 9,973.00              | 9,315.56     | 839.05       | 9,308.53                | 0.00                    | 0.00                   | 0.00                  |  |
| 19,000.00                                                       | 90.00           | 359.54      | 9,973.00              | 9,415.56     | 838.24       | 9,408.53                | 0.00                    | 0.00                   | 0.00                  |  |
| 19,100.00                                                       | 90.00           | 359.54      | 9,973.00              | 9,515.56     | 837.44       | 9,508.53                | 0.00                    | 0.00                   | 0.00                  |  |
| 19,200.00                                                       | 90.00           | 359.54      | 9,973.00              | 9,615.55     | 836.63       | 9,608.53                | 0.00                    | 0.00                   | 0.00                  |  |
| 19,300.00                                                       | 90.00           | 359.54      | 9,973.00              | 9,715.55     | 835.83       | 9,708.53                | 0.00                    | 0.00                   | 0.00                  |  |
| 19,400.00                                                       | 90.00           | 359.54      | 9,973.00              | 9,815.55     | 835.03       | 9,808.53                | 0.00                    | 0.00                   | 0.00                  |  |
| 19,500.00                                                       | 90.00           | 359.54      | 9,973.00              | 9,915.54     | 834.22       | 9,908.53                | 0.00                    | 0.00                   | 0.00                  |  |
| 19,600.00                                                       | 90.00           | 359.54      | 9,973.00              | 10,015.54    | 833.42       | 10,008.53               | 0.00                    | 0.00                   | 0.00                  |  |
| 19,700.00                                                       | 90.00           | 359.54      | 9,973.00              | 10,115.54    | 832.61       | 10,108.53               | 0.00                    | 0.00                   | 0.00                  |  |
| 19,800.00                                                       | 90.00           | 359.54      | 9,973.00              | 10,215.53    | 831.81       | 10,208.53               | 0.00                    | 0.00                   | 0.00                  |  |
| 19,900.00                                                       | 90.00           | 359.54      | 9,973.00              | 10,315.53    | 831.01       | 10,308.53               | 0.00                    | 0.00                   | 0.00                  |  |
| 20,000.00                                                       | 90.00           | 359.54      | 9,973.00              | 10,415.53    | 830.20       | 10,408.53               | 0.00                    | 0.00                   | 0.00                  |  |
| 20,100.00                                                       | 90.00           | 359.54      | 9,973.00              | 10,515.52    | 829.40       | 10,508.53               | 0.00                    | 0.00                   | 0.00                  |  |
| 20,200.00                                                       | 90.00           | 359.54      | 9,973.00              | 10,615.52    | 828.60       | 10,608.53               | 0.00                    | 0.00                   | 0.00                  |  |
| 20,300.00                                                       | 90.00           | 359.54      | 9,973.00              | 10,715.52    | 827.79       | 10,708.53               | 0.00                    | 0.00                   | 0.00                  |  |
| 20,400.00                                                       | 90.00           | 359.54      | 9,973.00              | 10,815.51    | 826.99       | 10,808.53               | 0.00                    | 0.00                   | 0.00                  |  |
| 20,500.00                                                       | 90.00           | 359.54      | 9,973.00              | 10,915.51    | 826.18       | 10,908.53               | 0.00                    | 0.00                   | 0.00                  |  |
| 20,600.00                                                       | 90.00           | 359.54      | 9,973.00              | 11,015.51    | 825.38       | 11,008.53               | 0.00                    | 0.00                   | 0.00                  |  |
| 20,700.00                                                       | 90.00           | 359.54      | 9,973.00              | 11,115.50    | 824.58       | 11,108.53               | 0.00                    | 0.00                   | 0.00                  |  |
| 20,806.64                                                       | 90.00           | 359.54      | 9,973.00              | 11,222.14    | 823.72       | 11,215.17               | 0.00                    | 0.00                   | 0.00                  |  |
| TD: 20806.64' MD/ 11215.17' VS/9973.00' TVD - 02-PBHL(NSC 604H) |                 |             |                       |              |              |                         |                         |                        |                       |  |



Planning Report

|                  |                                |                                     |                                                 |
|------------------|--------------------------------|-------------------------------------|-------------------------------------------------|
| <b>Database:</b> | TZ USA 17.2                    | <b>Local Co-ordinate Reference:</b> | Well (B04) Norte State Com 604H - Slot NSC 604H |
| <b>Company:</b>  | Franklin Mountain Energy LLC   | <b>TVD Reference:</b>               | 3826+30 @ 3856.00usft                           |
| <b>Project:</b>  | PV_Lea County, NM(N83-NME3001) | <b>MD Reference:</b>                | 3826+30 @ 3856.00usft                           |
| <b>Site:</b>     | Eagle Norte East Pad           | <b>North Reference:</b>             | Grid                                            |
| <b>Well:</b>     | (B04) Norte State Com 604H     | <b>Survey Calculation Method:</b>   | Minimum Curvature                               |
| <b>Wellbore:</b> | 604H                           |                                     |                                                 |
| <b>Design:</b>   | APD-Rev01                      |                                     |                                                 |

| Design Targets                                                                                                               |           |          |          |           |        |            |            |             |               |
|------------------------------------------------------------------------------------------------------------------------------|-----------|----------|----------|-----------|--------|------------|------------|-------------|---------------|
| Target Name                                                                                                                  | Dip Angle | Dip Dir. | TVD      | +N/-S     | +E/-W  | Northing   | Easting    | Latitude    | Longitude     |
| - hit/miss target                                                                                                            | (°)       | (°)      | (usft)   | (usft)    | (usft) | (usft)     | (usft)     |             |               |
| - Shape                                                                                                                      |           |          |          |           |        |            |            |             |               |
| 02-PBHL(NSC 604H)<br>- plan hits target center<br>- Point                                                                    | 0.00      | 0.00     | 9,973.00 | 11,222.14 | 823.72 | 628,854.80 | 816,758.28 | 32.72556210 | -103.43773579 |
| 01-T98(NSC 604H)<br>- plan misses target center by 47.64usft at 10376.09usft MD (9973.00 TVD, 794.47 N, 859.72 E)<br>- Point | 0.00      | 0.00     | 9,973.00 | 786.29    | 906.65 | 618,418.95 | 816,841.21 | 32.69687874 | -103.43775278 |

| Formations     |                |                              |           |     |               |  |
|----------------|----------------|------------------------------|-----------|-----|---------------|--|
| Measured Depth | Vertical Depth | Name                         | Lithology | Dip | Dip Direction |  |
| (usft)         | (usft)         |                              |           | (°) | (°)           |  |
| 30.00          | 30.00          | Cenozoic Alluvium (surface)  |           |     |               |  |
| 1,798.30       | 1,798.00       | Rustler                      |           |     |               |  |
| 2,035.75       | 2,034.00       | Salado                       |           |     |               |  |
| 3,165.81       | 3,152.00       | Base Salt                    |           |     |               |  |
| 3,336.63       | 3,321.00       | Yates                        |           |     |               |  |
| 3,776.33       | 3,756.00       | Seven Rivers                 |           |     |               |  |
| 4,539.47       | 4,511.00       | Queen                        |           |     |               |  |
| 6,114.29       | 6,069.00       | Delaware Mtn Group           |           |     |               |  |
| 7,356.66       | 7,302.00       | Bone Spring Lime             |           |     |               |  |
| 8,943.70       | 8,889.00       | First Bone Spring Sand       |           |     |               |  |
| 9,167.70       | 9,113.00       | Second Bone Spring Carbonate |           |     |               |  |
| 9,313.70       | 9,259.00       | Second Bone Spring Sand      |           |     |               |  |
| 9,789.41       | 9,716.00       | Third Bone Spring Carbonate  |           |     |               |  |
| 9,915.91       | 9,813.00       | Third Bone Spring Sand       |           |     |               |  |
| 10,354.74      | 9,973.00       | HZ Target                    |           |     |               |  |

| Plan Annotations |                |                   |        |                                               |  |
|------------------|----------------|-------------------|--------|-----------------------------------------------|--|
| Measured Depth   | Vertical Depth | Local Coordinates |        | Comment                                       |  |
| (usft)           | (usft)         | +N/-S             | +E/-W  |                                               |  |
|                  |                | (usft)            | (usft) |                                               |  |
| 9,454.74         | 9,400.04       | 210.00            | 752.00 | KOP: 9454.74' MD/ 203.96' VS/9400.04' TVD     |  |
| 10,354.74        | 9,973.00       | 773.45            | 855.92 | EOC: 10354.74' MD/ 766.56' VS/9973.00' TVD    |  |
| 10,366.24        | 9,973.00       | 784.77            | 857.98 | 100FLL: 10366.24' MD/ 777.85' VS/9973.00' TVD |  |
| 20,806.64        | 9,973.00       | 11,222.14         | 823.72 | TD: 20806.64' MD/ 11215.17' VS/9973.00' TVD   |  |

State of New Mexico  
 Energy, Minerals and Natural Resources Department

Submit Electronically  
 Via E-permitting

Oil Conservation Division  
 1220 South St. Francis Dr.  
 Santa Fe, NM 87505

## NATURAL GAS MANAGEMENT PLAN

This Natural Gas Management Plan must be submitted with each Application for Permit to Drill (APD) for a new or recompleted well.

### Section 1 – Plan Description Effective May 25, 2021

**I. Operator:** Franklin Mountain Energy 3, LLC **OGRID:** 331595 **Date:** 1/3/2024

**II. Type:**  Original  Amendment due to  19.15.27.9.D(6)(a) NMAC  19.15.27.9.D(6)(b) NMAC  Other.

If Other, please describe: \_\_\_\_\_

**III. Well(s):** Provide the following information for each new or recompleted well or set of wells proposed to be drilled or proposed to be recompleted from a single well pad or connected to a central delivery point.

| Well Name              | API | ULSTR | Footages | Anticipated Oil BBL/D | Anticipated Gas MCF/D | Anticipated Produced Water BBL/D |
|------------------------|-----|-------|----------|-----------------------|-----------------------|----------------------------------|
| See Attached Well List |     |       |          |                       |                       |                                  |
|                        |     |       |          |                       |                       |                                  |

**IV. Central Delivery Point Name:** Eagle/Norte CTB [See 19.15.27.9(D)(1) NMAC]

**V. Anticipated Schedule:** Provide the following information for each new or recompleted well or set of wells proposed to be drilled or proposed to be recompleted from a single well pad or connected to a central delivery point.

| Well Name              | API | Spud Date | TD Reached Date | Completion Commencement Date | Initial Flow Back Date | First Production Date |
|------------------------|-----|-----------|-----------------|------------------------------|------------------------|-----------------------|
| See Attached Well List |     |           |                 |                              |                        |                       |
|                        |     |           |                 |                              |                        |                       |

**VI. Separation Equipment:**  Attach a complete description of how Operator will size separation equipment to optimize gas capture.

**VII. Operational Practices:**  Attach a complete description of the actions Operator will take to comply with the requirements of Subsection A through F of 19.15.27.8 NMAC.

**VIII. Best Management Practices:**  Attach a complete description of Operator’s best management practices to minimize venting during active and planned maintenance.

**Section 2 – Enhanced Plan**

**EFFECTIVE APRIL 1, 2022**

Beginning April 1, 2022, an operator that is not in compliance with its statewide natural gas capture requirement for the applicable reporting area must complete this section.

Operator certifies that it is not required to complete this section because Operator is in compliance with its statewide natural gas capture requirement for the applicable reporting area.

**IX. Anticipated Natural Gas Production:**

| Well | API | Anticipated Average Natural Gas Rate MCF/D | Anticipated Volume of Natural Gas for the First Year MCF |
|------|-----|--------------------------------------------|----------------------------------------------------------|
|      |     |                                            |                                                          |
|      |     |                                            |                                                          |

**X. Natural Gas Gathering System (NGGS):**

| Operator | System | ULSTR of Tie-in | Anticipated Gathering Start Date | Available Maximum Daily Capacity of System Segment Tie-in |
|----------|--------|-----------------|----------------------------------|-----------------------------------------------------------|
|          |        |                 |                                  |                                                           |
|          |        |                 |                                  |                                                           |

**XI. Map.**  Attach an accurate and legible map depicting the location of the well(s), the anticipated pipeline route(s) connecting the production operations to the existing or planned interconnect of the natural gas gathering system(s), and the maximum daily capacity of the segment or portion of the natural gas gathering system(s) to which the well(s) will be connected.

**XII. Line Capacity.** The natural gas gathering system  will  will not have capacity to gather 100% of the anticipated natural gas production volume from the well prior to the date of first production.

**XIII. Line Pressure.** Operator  does  does not anticipate that its existing well(s) connected to the same segment, or portion, of the natural gas gathering system(s) described above will continue to meet anticipated increases in line pressure caused by the new well(s).

Attach Operator’s plan to manage production in response to the increased line pressure.

**XIV. Confidentiality:**  Operator asserts confidentiality pursuant to Section 71-2-8 NMSA 1978 for the information provided in Section 2 as provided in Paragraph (2) of Subsection D of 19.15.27.9 NMAC, and attaches a full description of the specific information for which confidentiality is asserted and the basis for such assertion.

### Section 3 - Certifications

Effective May 25, 2021

Operator certifies that, after reasonable inquiry and based on the available information at the time of submittal:

Operator will be able to connect the well(s) to a natural gas gathering system in the general area with sufficient capacity to transport one hundred percent of the anticipated volume of natural gas produced from the well(s) commencing on the date of first production, taking into account the current and anticipated volumes of produced natural gas from other wells connected to the pipeline gathering system; or

Operator will not be able to connect to a natural gas gathering system in the general area with sufficient capacity to transport one hundred percent of the anticipated volume of natural gas produced from the well(s) commencing on the date of first production, taking into account the current and anticipated volumes of produced natural gas from other wells connected to the pipeline gathering system.

***If Operator checks this box, Operator will select one of the following:***

**Well Shut-In.**  Operator will shut-in and not produce the well until it submits the certification required by Paragraph (4) of Subsection D of 19.15.27.9 NMAC; or

**Venting and Flaring Plan.**  Operator has attached a venting and flaring plan that evaluates and selects one or more of the potential alternative beneficial uses for the natural gas until a natural gas gathering system is available, including:

- (a) power generation on lease;
- (b) power generation for grid;
- (c) compression on lease;
- (d) liquids removal on lease;
- (e) reinjection for underground storage;
- (f) reinjection for temporary storage;
- (g) reinjection for enhanced oil recovery;
- (h) fuel cell production; and
- (i) other alternative beneficial uses approved by the division.

### Section 4 - Notices

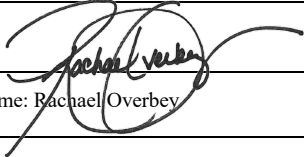
1. If, at any time after Operator submits this Natural Gas Management Plan and before the well is spud:

(a) Operator becomes aware that the natural gas gathering system it planned to connect the well(s) to has become unavailable or will not have capacity to transport one hundred percent of the production from the well(s), no later than 20 days after becoming aware of such information, Operator shall submit for OCD's approval a new or revised venting and flaring plan containing the information specified in Paragraph (5) of Subsection D of 19.15.27.9 NMAC; or

(b) Operator becomes aware that it has, cumulatively for the year, become out of compliance with its baseline natural gas capture rate or natural gas capture requirement, no later than 20 days after becoming aware of such information, Operator shall submit for OCD's approval a new or revised Natural Gas Management Plan for each well it plans to spud during the next 90 days containing the information specified in Paragraph (2) of Subsection D of 19.15.27.9 NMAC, and shall file an update for each Natural Gas Management Plan until Operator is back in compliance with its baseline natural gas capture rate or natural gas capture requirement.

2. OCD may deny or conditionally approve an APD if Operator does not make a certification, fails to submit an adequate venting and flaring plan which includes alternative beneficial uses for the anticipated volume of natural gas produced, or if OCD determines that Operator will not have adequate natural gas takeaway capacity at the time a well will be spud.

I certify that, after reasonable inquiry, the statements in and attached to this Natural Gas Management Plan are true and correct to the best of my knowledge and acknowledge that a false statement may be subject to civil and criminal penalties under the Oil and Gas Act.

|                                                                                                  |
|--------------------------------------------------------------------------------------------------|
| Signature:      |
| Printed Name: Rachael Overbey                                                                    |
| Title: Director Operations Planning & Regulatory                                                 |
| E-mail Address: roverbey@fmelle.com                                                              |
| Date: 4/2/2024                                                                                   |
| Phone: 720-414-7868                                                                              |
| <b>OIL CONSERVATION DIVISION</b><br><b>(Only applicable when submitted as a standalone form)</b> |
| Approved By:                                                                                     |
| Title:                                                                                           |
| Approval Date:                                                                                   |
| Conditions of Approval:                                                                          |

**NATURAL GAS MANAGEMENT PLAN**

**III. Well(s):** Provide the following information for each new or recompleted well or set of wells proposed to be drilled or proposed to be recompleted from a single well pad or connected to a central delivery point.

| Well Name            | API 14 Digit | ULSTR            | Surface Location FTG | Anticipated Oil BBL/D | Anticipated Gas MCF/D | Anticipated Produced Water BBL/D |
|----------------------|--------------|------------------|----------------------|-----------------------|-----------------------|----------------------------------|
| Eagle State Com 301H | 30-025-51160 | Lot 4, 3-19S-35E | 325 FNL 645 FWL      | 800 +/-               | 700 +/-               | 2500 +/-                         |
| Eagle State Com 302H | 30-025-51194 | Lot 4, 3-19S-35E | 400 FNL 745 FWL      | 800 +/-               | 700 +/-               | 2500 +/-                         |
| Eagle State Com 303H | 30-025-51161 | Lot 3, 3-19S-35E | 325 FNL 1920 FWL     | 800 +/-               | 700 +/-               | 2500 +/-                         |
| Eagle State Com 501H | 30-025-51195 | Lot 4, 3-19S-35E | 325 FNL 670 FWL      | 800 +/-               | 700 +/-               | 2500 +/-                         |
| Eagle State Com 502H | 30-025-51196 | Lot 3, 3-19S-35E | 400 FNL 1945 FWL     | 800 +/-               | 700 +/-               | 2500 +/-                         |
| Eagle State Com 601H | 30-025-51197 | Lot 4, 3-19S-35E | 400 FNL 720 FWL      | 800 +/-               | 700 +/-               | 2500 +/-                         |
| Eagle State Com 602H | 30-025-51198 | Lot 3, 3-19S-35E | 400 FNL 1895 FWL     | 800 +/-               | 700 +/-               | 2500 +/-                         |
| Eagle State Com 701H | 30-025-51199 | Lot 4, 3-19S-35E | 325 FNL 695 FWL      | 800 +/-               | 700 +/-               | 2500 +/-                         |
| Eagle State Com 702H | 30-025-51200 | Lot 3, 3-19S-35E | 400 FNL 1920 FWL     | 800 +/-               | 700 +/-               | 2500 +/-                         |
| Eagle State Com 703H | 30-025-51201 | Lot 3, 3-19S-35E | 325 FNL 1945 FWL     | 800 +/-               | 700 +/-               | 2500 +/-                         |
| Eagle State Com 304H | 30-025-52375 | Lot 1, 3-19S-35E | 578 FNL 1321 FEL     | 800 +/-               | 700 +/-               | 2500 +/-                         |
| Eagle State Com 503H | 30-025-52379 | Lot 2, 3-19S-35E | 578 FNL 1381 FEL     | 800 +/-               | 700 +/-               | 2500 +/-                         |
| Eagle State Com 504H | 30-025-52376 | Lot 1, 3-19S-35E | 578 FNL 1291 FEL     | 800 +/-               | 700 +/-               | 2500 +/-                         |
| Eagle State Com 704H | 30-025-52377 | Lot 2, 3-19S-35E | 578 FNL 1351 FEL     | 800 +/-               | 700 +/-               | 2500 +/-                         |
| Eagle State Com 705H | 30-025-52378 | Lot 1, 3-19S-35E | 578 FNL 1261 FEL     | 800 +/-               | 700 +/-               | 2500 +/-                         |
| Norte State Com 601H | 30-025-51162 | Lot 4, 3-19S-35E | 400 FNL 670 FWL      | 800 +/-               | 700 +/-               | 2500 +/-                         |
| Norte State Com 602H | 30-025-51163 | Lot 3, 3-19S-35E | 400 FNL 1995 FWL     | 800 +/-               | 700 +/-               | 2500 +/-                         |
| Norte State Com 701H | 30-025-51164 | Lot 4, 3-19S-35E | 400 FNL 645 FWL      | 800 +/-               | 700 +/-               | 2500 +/-                         |
| Norte State Com 702H | 30-025-51165 | Lot 3, 3-19S-35E | 325 FNL 1995 FWL     | 800 +/-               | 700 +/-               | 2500 +/-                         |
| Norte State Com 603H | TBD          | Lot 2, 3-19S-35E | 678 FNL 1337 FEL     | 800 +/-               | 700 +/-               | 2500 +/-                         |
| Norte State Com 604H | TBD          | Lot 1, 3-19S-35E | 678 FNL 1277 FEL     | 800 +/-               | 700 +/-               | 2500 +/-                         |
| Norte State Com 703H | TBD          | Lot 2, 3-19S-35E | 678 FNL 1367 FEL     | 800 +/-               | 700 +/-               | 2500 +/-                         |
| Norte State Com 704H | TBD          | Lot 1, 3-19S-35E | 678 FNL 1307 FEL     | 800 +/-               | 700 +/-               | 2500 +/-                         |

**V. Anticipated Schedule:** Provide the following information for each new or recompleted well or set of wells proposed to be drilled or proposed to be recompleted from a single well pad or connected to a central delivery point.

| Well Name            | API 14 Digit | Spud Date (Batch Drilling) | TD Reached Date | Completion Commencement Date | Initial Flowback Date | First Production Date |
|----------------------|--------------|----------------------------|-----------------|------------------------------|-----------------------|-----------------------|
| Eagle State Com 301H | 30-025-51160 | Producing                  |                 |                              |                       |                       |
| Eagle State Com 302H | 30-025-51194 | 5/1/2024                   | 6/30/2024       | 7/15/2024                    | 7/25/2024             | 7/27/2024             |
| Eagle State Com 303H | 30-025-51161 | 6/1/2024                   | 7/31/2024       | 8/15/2024                    | 8/25/2024             | 8/27/2024             |
| Eagle State Com 501H | 30-025-51195 | Producing                  |                 |                              |                       |                       |
| Eagle State Com 502H | 30-025-51196 | Producing                  |                 |                              |                       |                       |
| Eagle State Com 601H | 30-025-51197 | 5/1/2024                   | 6/30/2024       | 7/15/2024                    | 7/25/2024             | 7/27/2024             |
| Eagle State Com 602H | 30-025-51198 | 6/1/2024                   | 7/31/2024       | 8/15/2024                    | 8/25/2024             | 8/27/2024             |
| Eagle State Com 701H | 30-025-51199 | Producing                  |                 |                              |                       |                       |
| Eagle State Com 702H | 30-025-51200 | 6/1/2024                   | 7/31/2024       | 8/15/2024                    | 8/25/2024             | 8/27/2024             |
| Eagle State Com 703H | 30-025-51201 | Producing                  |                 |                              |                       |                       |
| Eagle State Com 304H | 30-025-52375 | 5/15/2024                  | 11/11/2024      | 11/26/2024                   | 12/6/2024             | 12/8/2024             |
| Eagle State Com 503H | 30-025-52379 | 5/15/2024                  | 11/11/2024      | 11/26/2024                   | 12/6/2024             | 12/8/2024             |
| Eagle State Com 504H | 30-025-52376 | 5/15/2024                  | 11/11/2024      | 11/26/2024                   | 12/6/2024             | 12/8/2024             |
| Eagle State Com 704H | 30-025-52377 | 5/15/2024                  | 11/11/2024      | 11/26/2024                   | 12/6/2024             | 12/8/2024             |
| Eagle State Com 705H | 30-025-52378 | 5/15/2024                  | 11/11/2024      | 11/26/2024                   | 12/6/2024             | 12/8/2024             |
| Norte State Com 601H | 30-025-51162 | 5/1/2024                   | 6/30/2024       | 7/15/2024                    | 7/25/2024             | 7/27/2024             |
| Norte State Com 602H | 30-025-51163 | 6/1/2024                   | 7/31/2024       | 8/15/2024                    | 8/25/2024             | 8/27/2024             |
| Norte State Com 701H | 30-025-51164 | 5/1/2024                   | 6/30/2024       | 7/15/2024                    | 7/25/2024             | 7/27/2024             |
| Norte State Com 702H | 30-025-51165 | Producing                  |                 |                              |                       |                       |
| Norte State Com 603H | TBD          | 5/15/2024                  | 11/11/2024      | 11/26/2024                   | 12/6/2024             | 12/8/2024             |
| Norte State Com 604H | TBD          | 5/15/2024                  | 11/11/2024      | 11/26/2024                   | 12/6/2024             | 12/8/2024             |
| Norte State Com 703H | TBD          | 5/15/2024                  | 11/11/2024      | 11/26/2024                   | 12/6/2024             | 12/8/2024             |
| Norte State Com 704H | TBD          | 5/15/2024                  | 11/11/2024      | 11/26/2024                   | 12/6/2024             | 12/8/2024             |



## Natural Gas Management Plan

### Items VI-VIII

#### **VI. Separation Equipment: Attach a complete description of how Operator will size separation equipment to optimize gas capture.**

- Data from surrounding wells is used to generate type curves which provides the basis for expected gas rates during initial production, peak production and then the natural decline.
- Separation equipment will be sized to provide adequate separation for peak production.
- Facility design includes multiple stages of separation to minimize gas waste. Wells flow through a 3-phase separator to remove gas. Gas from the 3 Phase separators are then sent through a gas scrubber before being route to treatment and/or sales.
- Industry standard sizing calculations are used for gas-liquid separation and liquid-liquid separation.

#### **VII. Operational Practices: Attach a complete description of the actions Operator will take to comply with the requirements of Subsection A through F 19.15.27.8 NMAC.**

- Drilling, completion and production setup is designed to minimize the waste of natural gas and to flare instead of vent.
- *Drilling Operations:*
  - Natural gas encountered will be flared instead of vented unless there is an equipment malfunction and/or to avoid risking safety or the environment.
  - Flares will be properly sized and placed at least 100' from the nearest surface hole on the pad.
- *Completions/Recompletions Operations:*
  - Flowback operations will not commence until connected to a properly sized gas gathering system.
  - During initial flowback wells are routed to the separation equipment as soon as technically feasible to minimize gas waste.
  - During separation flowback wells are routed to the separation equipment to minimize gas waste.
  - Gas sales is maximized. Gas will be flared instead of vented during an emergency or malfunction to avoid posing a risk to operations or personnel safety.
  - Flares are properly sized with a continuous pilot.
- *Production Operations:*
  - Gas sales will be maximized. Gas will be flared instead of vented during an emergency or malfunction to avoid posing a risk to operations or personnel safety.
  - After a well is stabilized from liquid unloading, the well will be turned back into the collection system.
- *Performance Standards:*
  - The facility will be designed to handle peak production rates and pressures.
  - All tanks will have automatic gauging equipment.
  - Flares will be designed to ensure proper combustion and will have continuous pilots. Flares will be located 100' from nearest surface hole on the pad and storage tanks.
  - Weekly AVOs will be performed, and any leaking thief hatches will be cleaned and properly re-sealed.
- *Measurement and Calibration:*





- All volume that is flared and vented that is not measured will be estimated.
- When metering is not practical due to low pressure/rate, all vented or flared volumes will be estimated.
- Measurement will conform to industry standards. Measurement will not be bypassed except for purposes of inspection or calibration.

**VIII. Best Management Practices: Attach a complete description of Operator's best management practices to minimize venting during active and planned maintenance.**

- Venting will be minimized during active and planned maintenance.
- Systems and equipment requiring maintenance will be isolated and blown down to sales and then flare before any remaining gas is vented in an effort to minimize waste and venting.
- Downhole maintenance will use best management practices to minimize vent.

Eagle/Norte NGMP Map

Feb 2023

- Capacities reflected are FME's understanding of 3rd party midstream system capacities

