

Submit 1 Copy To Appropriate District

Office

District I - (575) 393-6161

1625 N. French Dr., Hobbs, NM 88240

“XTM”

District III - (505) 334-6178

1000 Rio Brazos Rd., Aztec, NM 87410

District IV - (505) 476-3460

1220 S. St. Francis Dr., Santa Fe, NM
87505State of New Mexico
Energy, Minerals and Natural ResourcesOIL CONSERVATION DIVISION
1220 South St. Francis Dr.
Santa Fe, NM 87505

Form C-105

Revised July 18, 2013

WELL API NO.

30-015-32873

5. Indicate Type of Lease

STATE ☐ FEE ☒ KI

6. State Oil & Gas Lease No.

V-6733

7. Lease Name or Unit Agreement Name

DARTHROW 19 STATE

8. Well Number 1

9. OGRID Number 14049

10. Pool name or Wildcat

GETTY; MORROW GAS

SUNDRY NOTICES AND REPORTS ON WELLS

(DO NOT USE THIS FORM FOR PROPOSALS TO DRILL OR TO DEEPEN OR PLUG BACK TO A DIFFERENT RESERVOIR. USE "APPLICATION FOR PERMIT" (FORM C-101) FOR SUCH PROPOSALS.)

1. Type of Well: Oil Well ☐ ☒ Gas Well ☐ Other

2. Name of Operator

COG PRODUCTION, LLC

3. Address of Operator

2208 WEST MAIN STREET, ARTESIA, NM 88210

4. Well Location

Unit Letter **D** : **330** feet from the **N** line and **330** feet from the **W** lineSection **19** Township **20S** Range **30E** NMPM County **EDDY**

11. Elevation (Show whether DR, RKB, RT, GR, etc.)

3315' gr

12. Check Appropriate Box to Indicate Nature of Notice, Report or Other Data

NOTICE OF INTENTION TO:

PERFORM REMEDIAL WORK ☐ **PLUG AND ABANDON** ☐TEMPORARILY ABANDON ☐ CHANGE PLANS ☐PULL OR ALTER CASING ☐ MULTIPLE COMPL ☐DOWNHOLE COMMINGLE ☐CLOSED-LOOP SYSTEM ☐OTHER: ☐

SUBSEQUENT REPORT OF:

REMEDIAL WORK ☐ ALTERING CASING ☐COMMENCE DRILLING OPNS. Q P AND A **S**CASING/CEMENT JOB ☐OTHER: ☐

13. Describe proposed or completed operations. (Clearly state all pertinent details, and give pertinent dates, including estimated date of starting any proposed work). SEE RULE 19.15.7.14 NMAC. For Multiple Completions: Attach a wellbore diagram of proposed completion or recompletion.

4/2/24 - NOTIFIED NMOCD. MIRU.

4/9/24 - SET CIBP @ 11920' & TAG @ 11889'. SET CIBP @ 11741'. PRESSURE TEST CASING TO 500PSI 30 MIN OK.

4/10/24 - 3rd PARTY WIRELINE RUN CBL. TAG CIBP @ 11741'.

4/11/24 - CIRCULATE MLF. PUMPED 25 SX CLASS "H" CEMENT FROM 11741' - 11156'. PUMPED 25 SX CLASS "H" CEMENT FROM 11158' - 10931'. PUMPED 25 SX CLASS "H" CEMENT FROM 10734' - 10509'. PUMPED 40 SX CLASS "H" CEMENT FROM 9761' - 9400'.

4/12/24 - TAGGED @ 9317'. PUMPED 30 SX CLASS "C" CEMENT FROM 6453' - 6152'.

4/15/24 - TAGGED @ 6083'.

4/16/24 - PUMPED 30 SX. CLASS "C" CEMENT FROM 3632' - 3331' TAGGED @ 3332'. PUMPED 45 SX CLASS "C" CEMENT FROM 2432' - 1977'. TAGGED @ 1993'. PUMPED 30 SX CLASS "C" CEMENT FROM 1848' - 1547'.

4/17/24 - TAGGED @ 1556'. PERF'D @ 1250'. COULD NOT ESTABLISH INJECTION RATE. OCD APPROVAL TO PERF @ 1200'. COULD NOT ESTABLISH INJECTION RATE. SPOTTED 25 SX CLASS "C" CEMENT FROM 1300' - 1014'. TAGGED @ 1014'. PERF'D @ 375'. CIRC 100 SX CLASS "C" CEMENT FROM 375' - SURFACE.

4/18/24 - CUTOFF WH & INSTALLED MARKER PROHIBITION.

Spud Date:

Rig Release Date:

I hereby certify that the information above is true and complete to the best of my knowledge and belief.

SIGNATURE Ruth ShockencyTITLE Reg CoordinatorDATE 4/23/24Type or print name Ruth ShockencyE-mail address: ruth.shockency@conocophillips.comPHONE: 575-703-8321**For State Use Only**

APPROVED BY: _____

TITLE _____

DATE _____

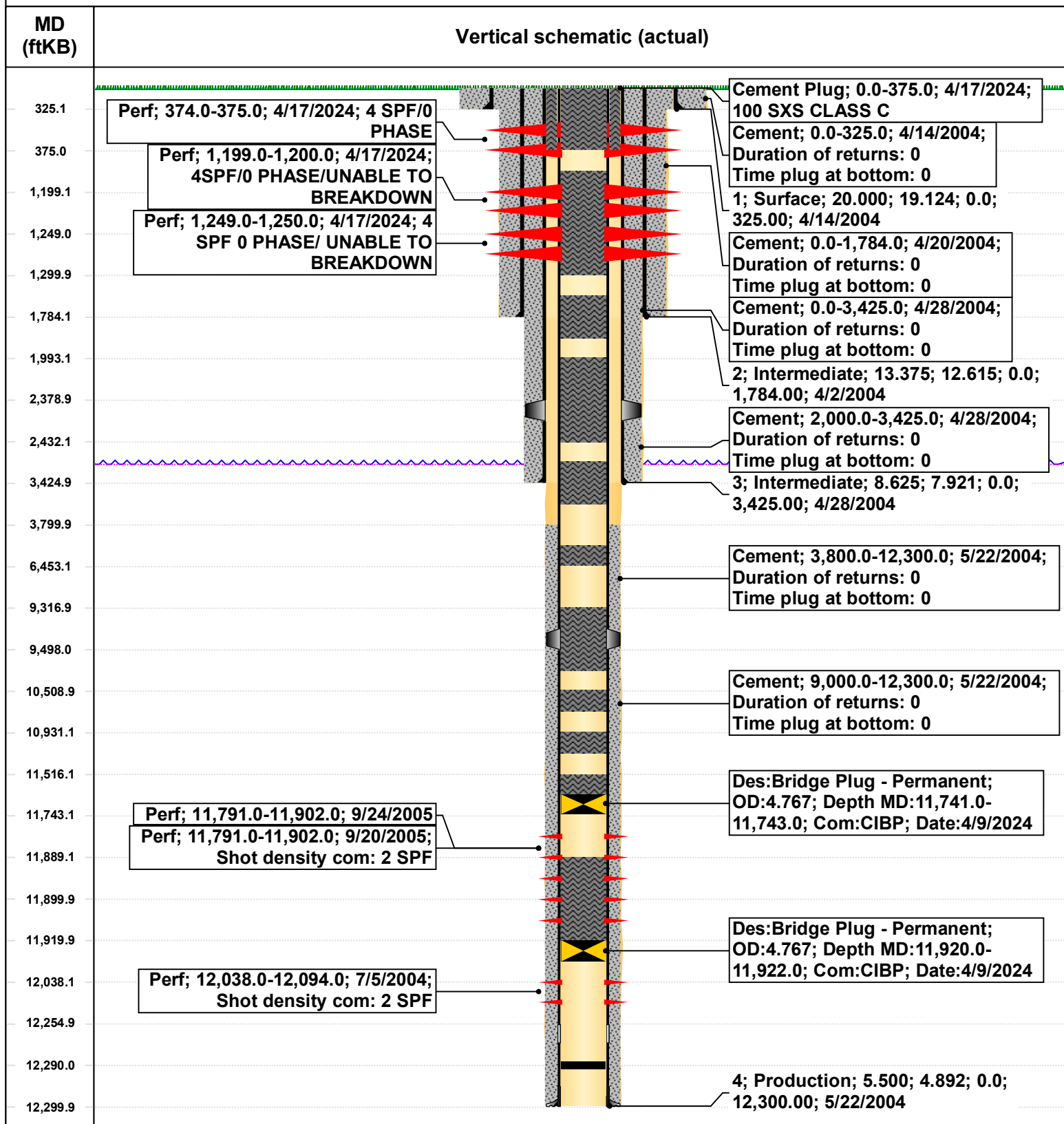


Schematic - Current

DARTHROW 19 STATE 1

District DELAWARE BASIN WEST		Field Name GETTY		API / UWI 3001532873		County EDDY		State/Province NEW MEXICO			
Original Spud Date 4/14/2004		Surface Legal Location Sec 19, T20S, R30E NMPM		East/West Distance (ft) 330.00		East/West Reference FWL		North/South Distance (ft) 330.00		North/South Reference FNL	

Original Hole, 5/2/2024 9:50:46 AM



District I
1625 N. French Dr., Hobbs, NM 88240
Phone:(575) 393-6161 Fax:(575) 393-0720
District II
811 S. First St., Artesia, NM 88210
Phone:(575) 748-1283 Fax:(575) 748-9720
District III
1000 Rio Brazos Rd., Aztec, NM 87410
Phone:(505) 334-6178 Fax:(505) 334-6170
District IV
1220 S. St Francis Dr., Santa Fe, NM 87505
Phone:(505) 476-3470 Fax:(505) 476-3462

State of New Mexico
Energy, Minerals and Natural Resources
Oil Conservation Division
1220 S. St Francis Dr.
Santa Fe, NM 87505

CONDITIONS

Action 341935

CONDITIONS

Operator: COG PRODUCTION, LLC 600 W. Illinois Ave Midland, TX 79701	OGRID: 217955
	Action Number: 341935
	Action Type: [C-103] Sub. Plugging (C-103P)

CONDITIONS

Created By	Condition	Condition Date
gcordero	well head cut off 4/18/24. CBL in Well File	5/31/2024