

I. REQUEST FOR ALLOWABLE AND AUTHORIZATION TO TRANSPORT

¹ Operator name and Address Hilcorp Energy Company 382 Road 3100 Aztec, NM 87410		² OGRID Number 372171
		³ Reason for Filing Code/ Effective Date RC
⁴ API Number 30-039-22762	⁵ Pool Name Blanco Mesaverde	⁶ Pool Code 72319
⁷ Property Code 318713	⁸ Property Name SAN JUAN 29-7 UNIT	⁹ Well Number 117

II. ¹⁰ Surface Location

UI or lot no. L	Section 19	Township 029N	Range 007W	Lot Idn	Feet from the 2190	North/South Line South	Feet from the 550	East/West Line West	County Rio Arriba
--------------------	---------------	------------------	---------------	---------	-----------------------	---------------------------	----------------------	------------------------	----------------------

¹¹ Bottom Hole Location

UL or lot no.	Section	Township	Range	Lot Idn	Feet from the	North/South Line	Feet from the	East/West Line	County Choose an item.
¹² Lse Code F	¹³ Producing Method Code F		¹⁴ Gas Connection Date		¹⁵ C-129 Permit Number	¹⁶ C-129 Effective Date		¹⁷ C-129 Expiration Date	

III. Oil and Gas Transporters

¹⁸ Transporter OGRID	¹⁹ Transporter Name and Address	²⁰ O/G/W
248440	Western Refinery	O
151618	Enterprise	G

IV. Well Completion Data

²¹ Spud Date 10/25/1981	²² Ready Date 5/24/2024	²³ TD 7,960'	²⁴ PBTD 7,943'	²⁵ Perforations 5045' – 5802'	²⁶ DHC, MC DHC-5386
²⁷ Hole Size		²⁸ Casing & Tubing Size		²⁹ Depth Set	
12 1/4"		9 5/8" K-55, 36#		314'	
8 3/4"		7", K-55, 20#		3,747'	
6 1/4"		4 1/2" K-55, 10.5#		7,960'	
		2 3/8", J-55, 4.7#		7,771'	

V. Well Test Data

³¹ Date New Oil	³² Gas Delivery Date 5/24/2024	³³ Test Date 5/24/2024	³⁴ Test Length 4 hrs	³⁵ Tbg. Pressure 10 psi	³⁶ Csg. Pressure 115 psi
³⁷ Choke Size 20/64 th	³⁸ Oil 0 bbl	³⁹ Water 0 bbl	⁴⁰ Gas 84 mcf		⁴¹ Test Method
⁴² I hereby certify that the rules of the Oil Conservation Division have been complied with and that the information given above is true and complete to the best of my knowledge and belief. Signature: Cherylene Weston			OIL CONSERVATION DIVISION		
Printed name: Cherylene Weston			Approved by:		
Title: Operations Regulatory Tech Sr.			Title:		
E-mail Address: cweston@hilcorp.com			Approval Date:		
Date: 5/30/2024		Phone: 713-289-2615			

Well Name: SAN JUAN 29-7 UNIT	Well Location: T29N / R7W / SEC 19 / NWSW / 36.710342 / -107.616669	County or Parish/State: RIO ARRIBA / NM
Well Number: 117	Type of Well: CONVENTIONAL GAS WELL	Allottee or Tribe Name:
Lease Number: NMSF078503	Unit or CA Name: SAN JUAN 29-7 UNIT--DK	Unit or CA Number: NMNM78417B
US Well Number: 3003922762	Operator: HILCORP ENERGY COMPANY	

Subsequent Report

Sundry ID: 2792869

Type of Submission: Subsequent Report

Type of Action: Recompletion

Date Sundry Submitted: 05/29/2024

Time Sundry Submitted: 03:06

Date Operation Actually Began: 05/03/2024

Actual Procedure: The subject well was recompleted into the Mesaverde formation per the attached reports.

SR Attachments

Actual Procedure

SJ_29_7_Unit_117_RC_Sundry_Report_20240529150613.pdf

Well Name: SAN JUAN 29-7 UNIT

Well Location: T29N / R7W / SEC 19 /
NWSW / 36.710342 / -107.616669

County or Parish/State: RIO
ARRIBA / NM

Well Number: 117

Type of Well: CONVENTIONAL GAS
WELL

Allottee or Tribe Name:

Lease Number: NMSF078503

Unit or CA Name: SAN JUAN 29-7
UNIT--DK

Unit or CA Number:
NMNM78417B

US Well Number: 3003922762

Operator: HILCORP ENERGY
COMPANY

Operator

I certify that the foregoing is true and correct. Title 18 U.S.C. Section 1001 and Title 43 U.S.C. Section 1212, make it a crime for any person knowingly and willfully to make to any department or agency of the United States any false, fictitious or fraudulent statements or representations as to any matter within its jurisdiction. Electronic submission of Sundry Notices through this system satisfies regulations requiring a

Operator Electronic Signature: CHERYLENE WESTON

Signed on: MAY 29, 2024 03:06 PM

Name: HILCORP ENERGY COMPANY

Title: Operations/Regulatory Tech - Sr

Street Address: 1111 TRAVIS STREET

City: HOUSTON

State: TX

Phone: (713) 289-2615

Email address: CWESTON@HILCORP.COM

Field

Representative Name:

Street Address:

City:

State:

Zip:

Phone:

Email address:

BLM Point of Contact

BLM POC Name: KENNETH G RENNICK

BLM POC Title: Petroleum Engineer


BLM POC Phone: 5055647742

BLM POC Email Address: krennick@blm.gov

Disposition: Accepted

Disposition Date: 05/29/2024

Signature: Kenneth Rennick

<div><div>Well Operations Summary L48</div></div>		
Well Name: SAN JUAN 29-7 UNIT #117		
API: 3003922762	Field: BASIN DAKOTA (PRORATED G #0068	State: NEW MEXICO
Permit to Drill (PTD) #:	Sundry #:	Rig/Service: HEC 101
Jobs		
Actual Start Date: 5/3/2024		End Date: 5/22/2024
Report Number 1	Report Start Date 5/3/2024	Report End Date 5/3/2024
Operation		
CREW LOAD SUPPLIES.		
CREW TRAVEL TO HODGSON RANCH GATE. SIGN IN WITH GATE GUARD. TRAVEL TO WELLSITE.		
MOVE IN, RIG UP EXPERT SLICKLINE SERVICES. SITP-100 PSI. SICP-100 PSI. MADE 3- RUNS.		
1ST RUN: 2.00" O.D. R.B. TOOL TO 7,837' SLM, RECOVER PLUNGER. 2ND RUN: 2.00" O.D. R.B. TOOL TO 7,838' SLM, RECOVER BUMPER SPRING/STANDING VALVE. 3RD RUN: 1.50" O.D. IMPRESSION BLOCK TO 7,931' SLM. TAG FILL. NO FLUID IN TUBING.		
RIG DOWN, MOVE OUT EXPERT SERVICES.		
PJSA WITH CREWS. START RIG MOVE OPERATIONS. MOBILIZED HEC RIG EQUIPMENT FROM THE S.J. 29-6 #70A TO THE S.J. 29-7 #117 WELLSITE (22.5 MILE MOVE). LEASE ROAD VERY ROUGH.		
RIG UP SERVICE UNIT. CONTINUE TO MOVE IN RIG EQUIPMENT. LEASE ROAD VERY ROUGH. STAGE IN EQUIPMENT.		
LUNCH/WATER BREAK.		
CHECK WELL PRESSURES. SITP-100 PSI. SICP-100 PSI. SIICP-0 PSI. SIBHP-0 PSI. OPEN WELL. BLOWDOWN IN 10 MINUTES TO A LIGHT BLOW.		
NIPPLE DOWN WELLHEAD. WELLHEAD BOLTS RUSTY & CORRODED. SEVERAL LOCKDOWN PINS MAY NEED TO BE REPLACED. NIPPLE UP BOP ASSEMBLY. FUNCTION TESTED GOOD.		
MOVE IN, RIG UP PREMIER NDT SERVICES. BEGIN TUBING SCAN OPERATIONS. SCANNED 249 - 2 3/8" TUBING JOINTS: 219 JOINTS - YELLOW BAND. 7 JOINTS - BLUE BAND (PITTING, BAD PINS). 15 JOINTS - GREEN BAND (PITTING, BAD PINS). 8 JOINTS - RED BAND (PITTING, BAD PINS).		
219 JOINTS PASSED SCAN INSPECTION, 30 JOINTS FAILED (PITTING & BAD PINS). THE BAD JOINTS WERE PRIMARILY NEAR THE BOTTOM OF THE STRING. RIG DOWN, MOVE OUT PREMIER SERVICES.		
ORDERED OUT 32- REPLACEMENT TUBING JOINTS FROM TUBOSCOPE TO BE LOADED AND DELIVERED ON MONDAY (5-6-2024). SHUT IN, SECURED WELL. SECURED RIG AND ALL EQUIPMENT. DEBRIEF CREW. SHUTDOWN OPERATIONS FOR THE WEEKEND.		
CREW TRAVEL TO YARD.		
Report Number 2	Report Start Date 5/6/2024	Report End Date 5/6/2024
Operation		
CREW TRAVEL TO WELLSITE. CREW ON HILCORP YARD AT 0500 HOURS.		
PJSA WITH CREW.		
CHECK WELL PRESSURES. SICP-200 PSI. SIICP-0 PSI. SIBHP-0 PSI. OPEN WELL. BLOWDOWN IN 20 MINUTES TO A LIGHT BLOW.		
MAKE UP 4 1/2" CASING CLEANOUT BHA ASSEMBLY. PREPARE TO TALLY & TRIP IN.		
1- 3.75" O.D. X .40' ROLLER BIT. 1- 3.75" O.D. X 3.20 STRING MILL. 1- 3.125" O.D. X 1.33' BIT SUB.		
TALLY & TRIP IN WITH 2 3/8" YELLOW BAND WELL TUBING FROM THE DERRICK. TRIPPED TO 7,030'.		
WAIT ON REPLACEMENT TUBING TO BE DELIVERED.		
MOVE IN, UNLOAD REPLACEMENT TUBING. RECEIVED 32- JOINTS (1,016.57') OF 2 3/8" 4.7# J-55 YELLOW BAND TUBING FROM TUBOSCOPE PIPE YARD.		
SEND IN 30- JOINTS OF 2 3/8" 4.7# J-55 WELL TUBING THAT FAILED SCAN TESTING TO TUBOSCOPE PIPE YARD FOR CREDIT.		
CONTINUE TO TALLY & TRIP IN WITH 2 3/8" YELLOW BAND REPLACEMENT TUBING. TRIPPED TO 7,675'.		
TRIPPED OUT WITH TUBING/SCRAPER. STAND BACK TUBING INTO THE DERRICK.		
www.peloton.com		
Page 1/5		
Report Printed: 5/24/2024		



Well Operations Summary L48

Well Name: SAN JUAN 29-7 UNIT #117

API: 3003922762	Field: BASIN DAKOTA (PRORATED G #0068	State: NEW MEXICO
	Sundry #:	Rig/Service: HEC 101

Operation
MAKE UP HILCORP 4 1/2" CAST IRON BRIDGE PLUG.
TRIP IN WITH 4 1/2" CIBP TO 7,636'. ATTMPT TO SET. UNABLE TO SET AT THIS DEPTH. TRIED NUMEROUS TIMES WITHOUT SUCCESS. MOVE UP TO 7,620' AND RETRIED. UNABLE TO SET. RIG UP PUMP LINES AND PUMP 10 BBLS OF WATER DOWN THE CASING.
WAIT FOR WATER TO FALL DOWN ANNULUS. RETRY AND WERE ABLE TO SET CIBP AT 7,620'. APPEARED TO HAVE A GOOD SET. LAY DOWN 1 JOINT TUBING.
RIG UP LINE TO THE TUBING. CIRCULATE 4 1/2" CASING ABOVE THE CIBP WITH 116 BBLS OF WATER.
CLOSE PIPE RAMS. ATTEMPT TO TEST THE 4 1/2" CASING & CIBP TO 580 PSI. LOSING PRESSURE AT 30 PSI PER MINUTE. RETRIED NUMEROUS TIMES WITH THE SAME RESULTS.
LOSING PRESSURE AT 30 PSI PER MINUTE.
SHUT IN, SECURED WELL. SECURED RIG AND ALL EQUIPMENT. DEBRIEF CREW. SHUTDOWN OPERATIONS FOR THE EVENING.
CREW TRAVEL TO YARD.

Report Number 3	Report Start Date 5/7/2024	Report End Date 5/7/2024
--------------------	-------------------------------	-----------------------------

Operation
CREW TRAVEL TO WELLSITE. CREW ON HILCORP YARD AT 0500 HOURS.
PJSA WITH CREW.
CHECK WELL PRESSURES. SITP-0 PSI. SICP-0 PSI. SIICP-0 PSI. SIBHP-0 PSI. OPEN WELL. NO PRESSURE TO BLOWDOWN. SERVICE & START RIG AND RIG PUMP.
RIG UP PUMP LINE TO THE TUBING. RELOADED 4 1/2" CASING. CLOSE PIPE RAMS. ATTEMPT TO TEST THE 4 1/2" CASING & CIBP TO 580 PSI. LOSING PRESSURE AT 3 PSI PER MINUTE. RETRIED SEVERAL TIMES WITH THE SAME RESULTS.
PICK UP 4 1/2" AS1-X PACKER. RUN IN AND SET AT 32'. RELOAD THE 4 1/2" CASING ANNULUS ABOVE THE PACKER. TEST TO 590 PSI. LOST ALL PRESSURE IN 3 MINUTES. RETRY WITH THE SAME RESULTS.
TIE BACK ON TO THE TUBING. RELOAD TUBING/CASING. ATTEMPT TO TEST TO 600 PSI. LOSING PRESSURE AT 3 PSI PER MINUTE. RETRY SEVERAL TIMES WITH THE SAME RESULTS.
LOSING PRESSURE BELOW THE PACKER AT 3 PSI PER MINUTE. CALL HEC ENGINEERING.
UNSET THE PACKER. TRIP OUT WITH THE TUBING STRING. STAND BACK INTO THE DERRICK.
MOVE IN BIG RED SERVICES & WELDER. PJSA WITH CREWS.
RIG DOWN FLOOR & TUBING TOOLS. NIPPLE DOWN BOP ASSEMBLY. NIPPLE DOWN 3K TUBING HEAD. CUT, WELD & DRESS UP 4 1/2" CASING STUB. INSTALL NEW 5K TUBING HEAD ASSEMBLY. TEST VOID SEALS TO 2,400 PSI. TESTED GOOD. RIG DOWN RELEASED BIG RED & DRAKE WELDER.
NIPPLE UP BOP ASSEMBLY & FUNCTION TEST. TESTED GOOD. RIG UP FLOOR & TUBING TOOLS.
TOP LOAD 4 1/2" CASING. PRESSURE UP TO 600 PSI TO TEST WELLHEAD/TUBING HEAD FLANGES FOR LEAKS. TEST GOOD, NO VISIBLE LEAKS. RELEASE PRESSURE.
TOO WINDY WITH HIGH GUSTS. WILL NOT TRIP IN WITH PACKER & TUBING. WILL SUSPEND OPERATIONS FOR THE DAY.
SHUT IN, SECURED WELL. SECURED RIG AND ALL EQUIPMENT. DEBRIEF CREW. SHUTDOWN OPERATIONS FOR THE EVENING.
CREW TRAVEL TO YARD.

Report Number 4	Report Start Date 5/8/2024	Report End Date 5/8/2024
--------------------	-------------------------------	-----------------------------

Operation
CREW TRAVEL TO WELLSITE. CREW ON HILCORP YARD AT 0500 HOURS.
PJSA WITH CREW.
CHECK WELL PRESSURES. SICP-0 PSI. SIICP-0 PSI. SIBHP-0 PSI. OPEN WELL. NO PRESSURE TO BLOWDOWN. SERVICE & START RIG AND RIG PUMP.



Well Operations Summary L48

Well Name: SAN JUAN 29-7 UNIT #117

API: 3003922762

Field: BASIN DAKOTA (PRORATED G #0068

State: NEW MEXICO

Sundry #:

Rig/Service: HEC 101

Operation

1ST TEST: RELOAD 4 1/2" CASING. CLOSE BLIND RAMS. ATTEMPT TEST 4 1/2" CASING & CIBP TO 580 PSI. LOSING PRESSURE AT 1 PSI PER MINUTE. RETRIED SEVERAL TIMES WITH THE SAME RESULTS. RELEASE PRESSURE.

2ND TEST: RUN IN PACKER & SET AT 3,702'. TEST ABOVE & BELOW PACKER TO 580 PSI. LOST ALL PRESSURE IN 5 MINUTES. RETRY WITH THE SAME RESULTS.

3RD TEST: PACKER AT 3,642'. TEST ABOVE PACKER TO 600 PSI FOR 30 MINUTES. TEST WAS GOOD.

4TH TEST: PACKER AT 3,744'. TEST BELOW PACKER TO 580 PSI. LOST PRESSURE AT 5 PSI/MINUTE.

5TH TEST: PACKER AT 4,019'. TEST BELOW PACKER TO 590 PSI. LOST PRESSURE AT 5 PSI/MINUTE.

FOUND SPLIT ON TUBING JOINT. THIS CAUSED DOUBT ON ACCURACY OF PREVIOUS TESTS. WILL MOVE PACKER BACK TO 3,642'.

6TH TEST: PACKER AT 3,642'. TEST ABOVE PACKER TO 590 PSI FOR 30 MINUTES. TEST WAS GOOD.

7TH TEST: PACKER AT 3,736'. TEST BELOW PACKER TO 590 PSI. LOST PRESSURE AT 2 PSI/MINUTE.

8TH TEST: PACKER AT 3,736'. TEST ABOVE PACKER TO 600 PSI FOR 30 MINUTES. TEST WAS GOOD.

9TH TEST: PACKER AT 4,333'. TEST ABOVE PACKER TO 600 PSI FOR 30 MINUTES. TEST WAS GOOD.

10TH TEST: PACKER AT 5,464'. TEST ABOVE PACKER TO 590 PSI FOR 30 MINUTES. TEST WAS GOOD.

11TH TEST: PACKER AT 6,092'. TEST BELOW PACKER TO 590 PSI FOR 30 MINUTES. TEST WAS GOOD.

LEAK APPEARS TO BE FROM 5,464' TO 6,092'. CALL HEC ENGINEERING WITH RESULTS.

RELEASE PRESSURE. DRAIN WELLHEAD AND LINES. DRAIN RIG PUMP. CALL AND SET UP MIT WITH NM OCD (M.KUEHLING) AND WELLCHECK SERVICES.

SECURED WELL. SECURED RIG AND ALL EQUIPMENT. DEBRIEF CREW. SHUTDOWN OPERATIONS FOR THE EVENING.

CREW TRAVEL TO YARD.

Report Number

5

Report Start Date

5/9/2024

Report End Date

5/9/2024

Operation

CREW TRAVEL TO WELLSITE. CREW ON HILCORP YARD AT 0500 HOURS.

PJSA WITH CREW.

CHECK WELL PRESSURES. SICP-0 PSI. SIICP-0 PSI. SIBHP-0 PSI. OPEN WELL. NO PRESSURE TO BLOWDOWN. SERVICE & START RIG AND RIG PUMP.

MOVE IN, RIG UP WELLCHECK SERVICES. PRESSURE TEST UNIT, TEST GOOD, PERFORM MOCK MIT TEST ON 4 1/2" CASING BELOW PACKER TO CIBP AT 7,620'. TEST WAS GOOD. PACKER AT 6,091'.

CONDUCTED 2 MITS ON WELL. ALSO CONDUCTED BRADENHEAD TEST.

1ST TEST: PKR AT 6,091'. TEST 4 1/2" CSG & CIBP (7,620') BELOW PACKER TO 565 PSI FOR 30 MINUTES. TEST GOOD.

2ND TEST: PULL PKR TO 5,464'. TEST 4 1/2" CSG ABOVE PACKER TO SURFACE TO 565 PSI FOR 30 MINUTES. TEST GOOD.

WITNESSED BY ANTHONY BUNNY, NMOCD.

RELEASED PRESSURE, RIG DOWN WELLCHECK SERVICES. NOTIFY HEC ENGINEERING OF TEST RESULTS.

UNSET AS1-X PACKER & TRIP OUT OF WELL LAYING DOWN WELL TUBING.

MOVE IN, RIG UP BASIN WIRELINE UNIT & TOOLS.

MAKE UP AND RUN IN 3.75" GAUGE RING TO 5,920' WLM.

MAKE UP AND RUN IN WITH SELECT 4 1/2" COMPOSITE BRIDGE PLUG. SET AT 5,820' WLM.

CORRELATED OFF OF GR/CCL/CBL LOG DATED 12-4-81.

PERFORATE THE MESAVERDE : 5,045', 5,050', 5,054', 5,073', 5,080', 5,096', 5,123', 5,129', 5,135', 5,141', 5,148', 5,166', 5,175', 5,180', 5,191', 5,207', 5,240', 5,252', 5,260', 5,266', 5,272', 5,296', 5,310', 5,319', 5,351', 5,395', 5,459', 5,465', 5,480', 5,490', 5,501', 5,513', 5,529', 5,548', 5,561', 5,576', 5,613', 5,623', 5,639', 5,654', 5,667', 5,679', 5,687', 5,694', 5,721', 5,730', 5,769', 5,802' WITH 48- .34" DIA. (48 SHOTS) PERFORATIONS. CORRELATED OFF OF GR/CCL/CBL LOG DATED 12-4-81.

PERFORATING GUNS: DYNA 3 1/8" HSC, .34" DIAMETER PERFS, 0 DEGREE PHASE, 22" PENETRATION, 12.0 GRAM CHARGES.

FLUID LEVEL DROPPED FROM 0' TO 850' AFTER PERFORATIONS WERE SHOT.

MADE 2 GUN RUNS. ALL PERFORATIONS WERE SHOT. RIG DOWN BASIN WIRELINE UNIT & TOOLS.

SHUT IN, SECURED WELL. SECURED RIG AND ALL EQUIPMENT. SHUTDOWN JOB OPERATIONS FOR THE EVENING.

CREW TRAVEL TO YARD.

Report Number

6

Report Start Date

5/10/2024

Report End Date

5/10/2024

Operation

CREW TRAVEL TO LOCATION

PJSM, CREW CHECK WELL HEAD PRESSURES SITP-N/A, SICP-0, SIBHP-0, OPEN WELL.

PICK UP & MAKE UP 2-7/8" FRAC STRING AS FOLLOWS: 1 X WIRELINE RENTRY, 1 X DUAL DISC, 1 X 4.5" AS1X PACKER, 2 X CROSSOVERS, 1 X JT 2-7/8" RTS-8, 1 X MARKER JT, 162 X JTS 2-7/8" RTS-8, P-110, 6.5#, 1 X CROSSOVER, 1 X PUP JT, 1 X HANGER. EOT @ 5026', PACKER SET @ 5022'.

RIG DOWN FLOOR & HANDLING EQUIPMENT, NIPPLE DOWN BOPE, NIPPLE UP 10K FRAC STACK. TEST VOIDS TO 4500 PSI-GOOD.

SPOT IN & RIG UP WELLCHECK TO PRESSURE TEST. PRESSURE TEST 4.5" X 2-7/8" ANNULUS TO 500 PSI-GOOD, LOAD 2-7/8" TUBING & PRESSURE TEST TO 7600 PSI, 9769 PSI @ 5026' ON DUAL DISK SUB. RIG DOWN WELLCHECK.



Well Operations Summary L48

Well Name: SAN JUAN 29-7 UNIT #117

API: 3003922762	Field: BASIN DAKOTA (PRORATED G #0068	State: NEW MEXICO
	Sundry #:	Rig/Service: HEC 101

Operation		
SPOT IN & RIG UP SLICK LINE, RUN IN HOLE AND KNOCK OUT DUAL DISK. NO ISSUES. RIG DOWN AND RELEASE SLICK LINE.		
SHUT IN & SECURE WELL, CREW TRAVEL TO YARD.		

Report Number 7	Report Start Date 5/17/2024	Report End Date 5/17/2024
--------------------	--------------------------------	------------------------------

Operation		
SPOT IN AND RIG UP FRAC CREW. PRIME, COOL DOWN, TEST, SAFETY MEETING. PUT 500 PSI ON FRAC STRING ANNULUS. LOAD BALL GUN.		
BROKE DOWN WELL WITH WATER AND 1000 GAL 15% HCl. FOAM FRAC'D MESAVERDE WITH 250,613 LBS 20/40 ARIZONA AND 87,990 GAL SLICKWATER AND 3.32 MILLION SCF N2, 70 QUALITY. AVG RATE = 60 BPM, AVG PSI = 4,392. ISIP WAS 414 PSI (268 PSI IN 5 MINUTES). PUMPED TWO 125,000 LB SAND RAMPS AND DROPPED 24 7/8" RCN BALLS IN BETWEEN RAMPS. (BLENDER DECK ENGINE DIED AT THE START OF THE SECOND SAND RAMP).		
SHUT IN WELL AND RIG DOWN CREW. TOTAL LOAD IS 2,119 BBLS.		

Report Number 8	Report Start Date 5/18/2024	Report End Date 5/18/2024
--------------------	--------------------------------	------------------------------

Operation		
CREW TRAVEL TO LOCATION SAN JUAN 29-6 #37A.		
HOLD PJSM.		
MOB FROM THE SAN JUAN 29-6 UNIT #37A TO THE SAN JUAN 29-7 #117 (21.5 MILE MOVE).		
SPOT RIG AND EQUIPMENT. RIG UP RIG EQUIPMENT. BLEED DOWN WELL. SITP: 700 PSI SICP: 150 PSI SIBHP: 0 PSI BDW: 60 MIN		
LUBRICATE IN TWC (HOLDING). N/D FRAC STACK. N/U BOP. R/U RIG FLOOR. CHANGE OVER TO 2-7/8" HANDLING TOOLS.		
R/U WELLCHECK. PRESSURE TEST PIPE RAMS AND BLIND RAMS. 250 PSI LOW FOR 5 MINUTES AND 2500 PSI HIGH FOR 10 MINUTES. TEST CHARTED. R/D WELLCHECK.		
RELEASE PCKR. DRAGGING FOR FIRST JOINT THEN PULLED FREE. PULL HANGER. LUBRICATE OUT TWC (800 PSI ON TBG). PUMP 50BBL KILL TBG. R/D LUBRICATOR. L/D HANGER.		
TOOH LAYING DOWN 2 7/8" FRAC STRING AND AS1-X PACKER FROM A DEPTH OF 5,026.61'. LAYED DOWN 162 JOINTS OF 2 7/8 P110. CHANGE OVER TO 2 3/8" HANDLING TOOLS.		
SWAP OUT FRAC STRING LAY DOWN FLOAT WITH 2 3/8" PRODUCTION TUBING FLOAT. SENT 162 JNTS OF 2 7/8 P110 TBG BACK TO TUBOSCOPE. RECIEVED 255 JNTS OF 2 3/8" TBG FROM TUBOSCOPE. THIS IS THE TUBING THAT WAS IN THIS WELL.		
SHUT WELL IN. SECURE LOCATION. SHUT DOWN FOR THE DAY.		
TRAVEL BACK TO YARD.		

Report Number 9	Report Start Date 5/19/2024	Report End Date 5/19/2024
--------------------	--------------------------------	------------------------------

Operation		
CREW TRAVELED TO LOCATION.		
START RIG AND EQUIPMENT. PRE JOB SAFETY MEETING. TOOK PRESSUURES ON WELL. BLOW DOWN WELL. SITP: N/A PSI SICP: 700 PSI SIBHP: 0 PSI BDW: 60 MIN		
MAKE UP CLEAN OUT ASSEMBLY/ 3 7/8" JUNK MILL. PICK UP 166 JOINTS 2 3/8- 4.7# J55 EUE TUBING, TAGGED 301' OF FILL ON TOP OF OUR CIBP WHICH IS @ 5820'		
PU POWER SWVL, ATTEMPT TO BREAK CIRCULATION AIR UNIT WENT DOWN, ATTEMPT TO FIX, WAIT ON PARTS, FIX AIR UNIT, BREAK CIRCULATION, REACHED POP OFF, TRIP OUT OF THE HOLE WITH 20 STANDS TO A DEPTH OF 4278'. 766' ABOVE TOP PERF AT 5045'. ATTEMPT TO UNLOAD WELL, TBG PLUGGED UP, TOOH UNPLUG MILL AND BIT SUB, TIH TO 2000'		

Report Number 10	Report Start Date 5/20/2024	Report End Date 5/20/2024
---------------------	--------------------------------	------------------------------

Operation		
CREW TRAVEL TO LOCATION.		
START RIG AND EQUIPMENT. PRE JOB SAFETY MEETING. TOOK PRESSURES ON WELL. BLOW DOWN WELL. SITP: 0 PSI SICP: 700 PSI SIBHP: 0 PSI BDW: 30 MIN		
TRIP IN HOLE FROM 2000' TO FILL AT 5421'. RIG UP POWER SWIVEL.		
BRING ON AIR PACKAGE AT 1350 CFM. ESTABLISH AIR FOAM MIST WITH 2 GALLONS FOAMER AND 2 GALLONS CORROSION INHIBITOR PER 10 BBLS OF WATER. UNLOAD HOLE IN 10 MINUTES WITH A CIRCULATING PRESSURE OF @500 PSI. CLEAN OUT FILL FROM 5421' TO 5820'. 399' OF FILL, FRAC SAND RETURNS. FRAC SAND RETURNS DOWN TO 1/4 CUP OF SAND PER 5 GALLON BUCKET TEST.		
RACK BACK POWER SWVL, TRIP OUT OF THE HOLE WITH MILL AND 15 STANDS OF 2 3/8" TUBING FROM 5820'. TO A DEPTH OF 4906'. 139' ABOVE TOP PERF AT 5045.,		
SHUT WELL IN .SECURE LOCATION. SHUT DOWN FOR THE DAY.		
TRAVEL BACK TO YARD.		

Report Number 11	Report Start Date 5/21/2024	Report End Date 5/21/2024
---------------------	--------------------------------	------------------------------

Operation		
RIG CREW TRAVEL TO LOCATION.		
START RIG AND EQUIPMENT. PRE JOB SAFETY MEETING. TOOK PRESSURES ON WELL. BLOW DOWN WELL. SITP: 0 PSI SICP: 480 PSI SIBHP: 0 PSI BDW: 30 MIN		
TRIP IN HOLE FROM 4906' TO FILL AT 5797'. RIG UP POWER SWIVEL.		
BRING ON AIR PACKAGE AT 1350 CFM. ESTABLISH AIR FOAM MIST WITH 2 GALLONS FOAMER AND 2 GALLONS CORROSION INHIBITOR PER 10 BBLS OF WATER. UNLOAD HOLE IN 30 MINUTES WITH A CIRCULATING PRESSURE OF @500 PSI. CLEAN OUT FILL FROM 5797' TO CBP AT 5820'. FRAC SAND RETURNS DOWN TO 1/4 CUP OF SAND PER 5 GALLON BUCKET TEST.		
MILL UP CBP AT 5820' WITH 12 BBL PER HOUR AIR FOAM MIST. CIRCULATE HOLE CLEAN. SHUT AIR UNIT DOWN. HANG BACK SWIVEL.		



Well Operations Summary L48

Well Name: SAN JUAN 29-7 UNIT #117

API: 3003922762	Field: BASIN DAKOTA (PRORATED G #0068	State: NEW MEXICO
	Sundry #:	Rig/Service: HEC 101

Operation		
TALLY, PICK UP TBG FROM FLOAT AND TRIP IN HOLE TO CIBP AT 7820'. RIG UP POWER SWIVEL.		
BRING ON AIR UNIT AT 1350 CFM WITH 14 BBL PER HOUR AIR FOAM MIST WITH 2 GALLON FOAMER AND 2 GALLON OF CORROSION INHIBITOR PER 10 BBLs PUMPED. ESTABLISH GOOD CIRCULATION. SAND RETURNS DOWN TO A 1/4 CUP PER 5 GALLON BUCKET TEST. MILL UP CIBP AT 7820'. CIRCULATE HOLE CLEAN AT 7825'. BYPASS AIR UNIT .		
TALLY. PICK UP TBG FROM FLOAT AND TRIP IN HOLE FROM 7825' TO 7903'. TAGGED 40' FILL CLEAN OUT TO PBDT AT 7943' . RACK BACK SWVL,		
TRIP OUT OF THE HOLE WITH MILL, LD MILL,		
SHUT WELL IN .SECURE LOCATION. SHUT DOWN FOR THE DAY.		
TRAVEL BACK TO YARD.		

Report Number 12	Report Start Date 5/22/2024	Report End Date 5/22/2024
---------------------	--------------------------------	------------------------------

Operation		
CREW TRAVELED TO LOCATION.		
START RIG AND EQUIPMENT. PRE JOB SAFETY MEETING. TOOK PRESSURES ON WELL. BLOW DOWN WELL. SITP: 0 PSI SICP: 400 PSI SIBHP: 0 PSI BDW: 30 MIN, TO A STEADY BLOW.		
TRIP AND BROACH IN THE HOLE WITH 2 3/8" PRODUCTION STRING TO FILL DEPTH OF 7943'. PBDT 7943' . TOTAL OF 0' OF FILL.		
LAY DOWN CLEAN OUT JNTS. LAND 2 3/8" TUBING AT 7770.60' . RAN AS FOLLOWS -EXPCK, 1.10 SN. 1 JNT OF TUBING. 2.10' MARKER JOINT. 245 JNTS OF TUBING, 8.07 PUP JNT, 1 JNT OF TBG, AND 7 1/16 TUBING HANGER. TOTAL JNTS IN THE HOLE =247.		
ND BOP. NU WH. BRING ON AIR UNIT. PUMP A 3 BBL PAD DOWN TUBING. DROP PUMP OUT BALL. PUMP A 2 BBL WATER PAD WITH 7 GALLONS OF CORROSION INHIBITOR. PRESSURE TEST TUBING TO 500 PSI FOR 5 MINUTES. TEST GOOD. PUMP OFF CHECK AT 1250 PSI. BLOW WELL AROUND AND UNLOAD HOLE. SHUT AIR UNIT DOWN.		
RIG DOWN RIG AND EQUIPMENT. SHUT WELL IN. SECURE LOCATION, JOB COMPLETE.		

The well is producing as a MV/DK commingle on Test Allowable waiting on RC C-104 approval.

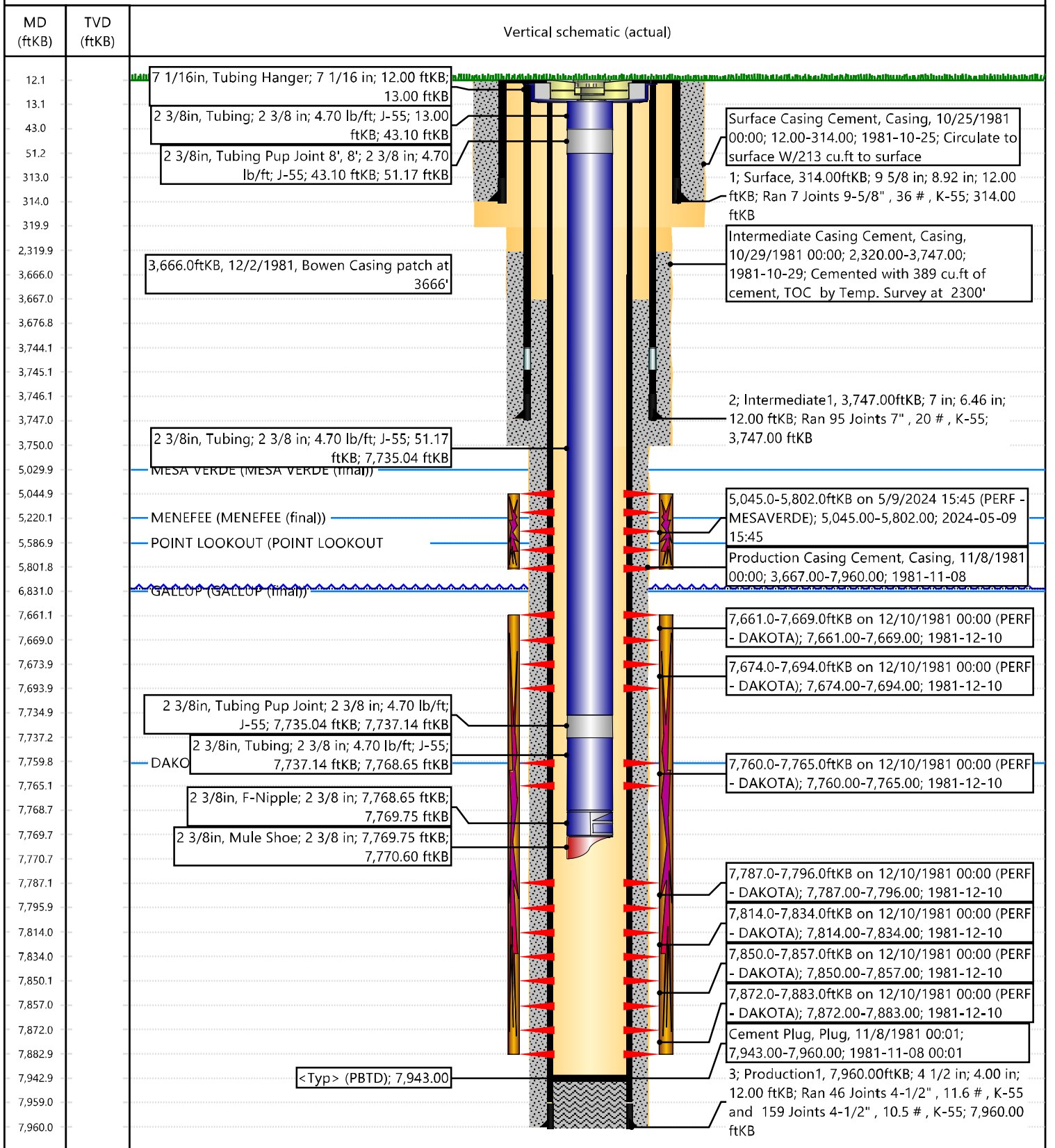


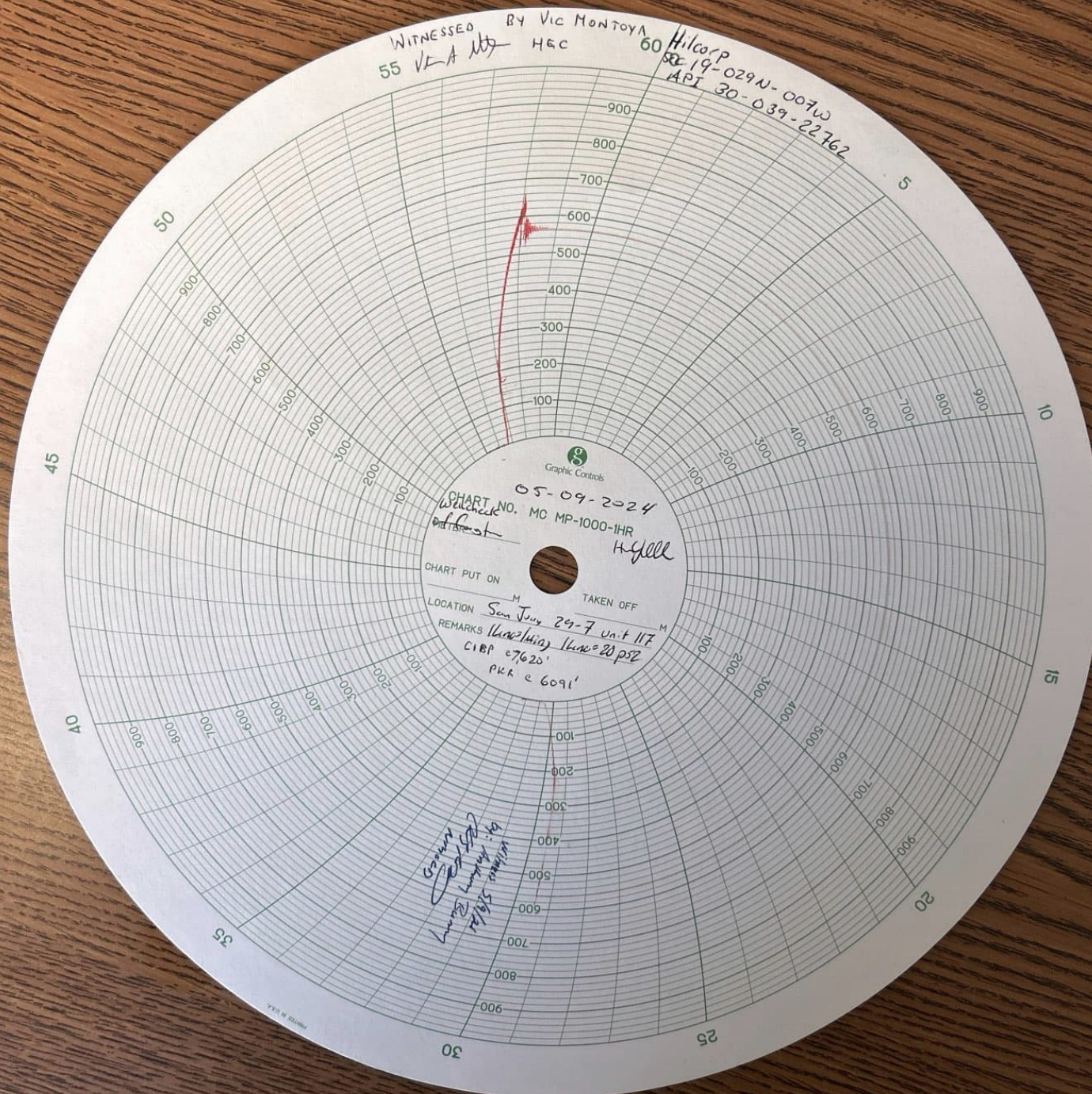
Current Schematic - Version 3

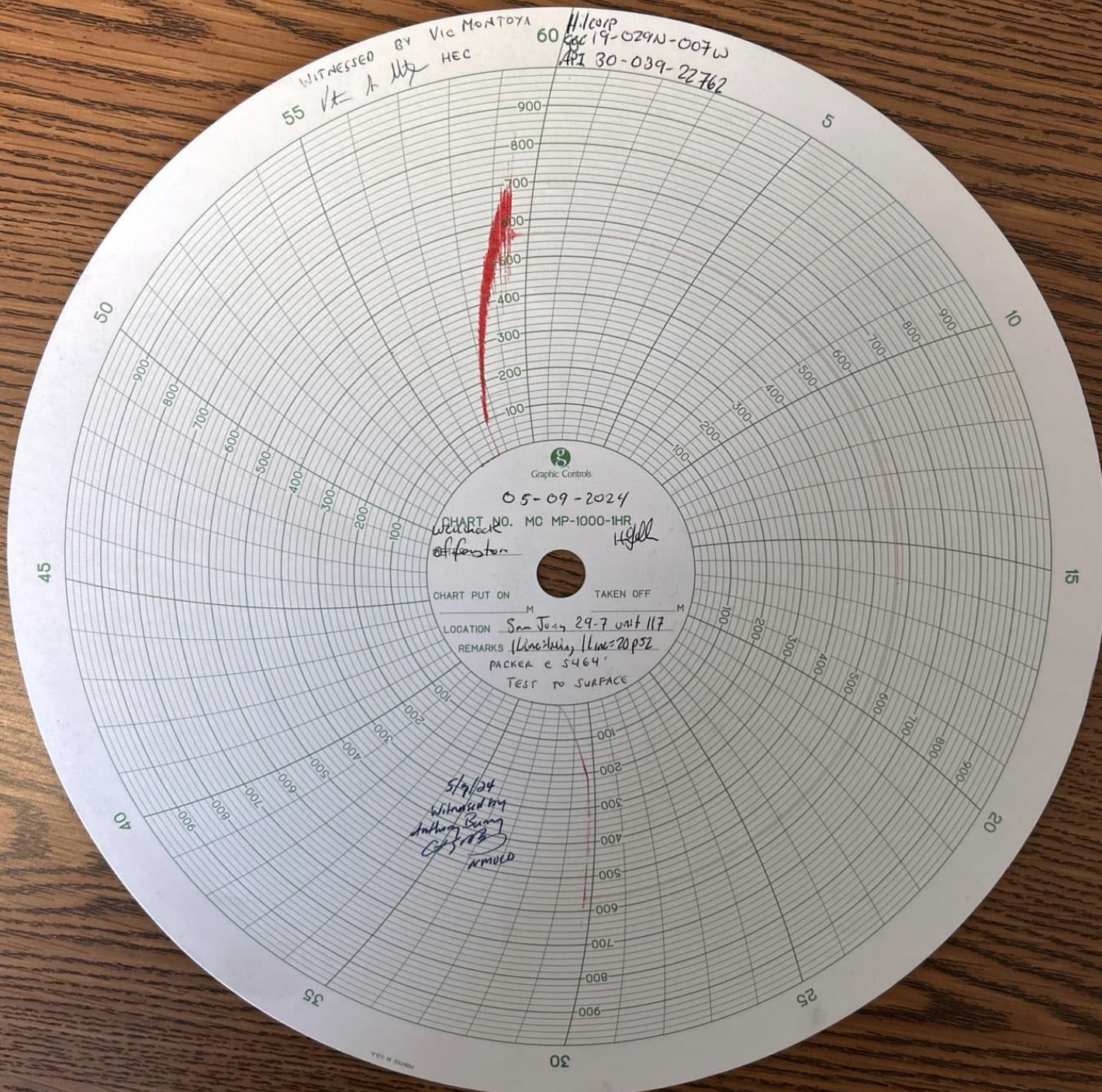
Well Name: SAN JUAN 29-7 UNIT #117

API / UWI 3003922762	Surface Legal Location 019-029N-007W-L	Field Name BASIN DAKOTA (PRORATED G #0068)	Route 1001	State/Province NEW MEXICO	Well Configuration Type VERTICAL
Ground Elevation (ft) 6,712.00	Original KB/RT Elevation (ft) 6,724.00	Tubing Hanger Elevation (ft)	RKB to GL (ft) 12.00	KB-Casing Flange Distance (ft)	KB-Tubing Hanger Distance (ft)

Original Hole [VERTICAL]







Cheryl Weston

From: blm-afmss-notifications@blm.gov
Sent: Wednesday, May 29, 2024 4:49 PM
To: Cheryl Weston
Subject: [EXTERNAL] Well Name: SAN JUAN 29-7 UNIT, Well Number: 117, Notification of Well Completion Acceptance

CAUTION: External sender. DO NOT open links or attachments from UNKNOWN senders.

The Bureau of Land Management

Notice of Acceptance for Well Completion Report

- Operator Name: **HILCORP ENERGY COMPANY**
- Well Name: **SAN JUAN 29-7 UNIT**
- Well Number: **117**
- US Well Number: **3003922762**
- Well Completion Report Id: **WCR2024052991882**

This notification is automatically generated. Please do not reply to this message as this account is not monitored.

UNITED STATES DEPARTMENT OF THE INTERIOR BUREAU OF LAND MANAGEMENT						FORM APPROVED OMB No. 1004-0137 Expires: July 31, 2018				
WELL COMPLETION OR RECOMPLETION REPORT AND LOG						5. Lease Serial No. NMSF078503				
1a. Type of Well <input type="checkbox"/> Oil Well <input checked="" type="checkbox"/> Gas Well <input type="checkbox"/> Dry <input type="checkbox"/> Other						6. If Indian, Allottee or Tribe Name				
b. Type of Completion: <input type="checkbox"/> New Well <input type="checkbox"/> Work Over <input type="checkbox"/> Deepen <input type="checkbox"/> Plug Back <input type="checkbox"/> Diff. Resvr.,						7. Unit or CA Agreement Name and No.				
Other: RECOMPLETE						8. Lease Name and Well No. San Juan 29-7 Unit 117				
2. Name of Operator Hilcorp Energy Company			3. Address 382 Rd 3100, Aztec NM 87410			3a. Phone No. (include area code) (505) 333-1700			10. Field and Pool or Exploratory Blanco Mesaverde	
4. Location of Well (Report location clearly and in accordance with Federal requirements)* At surface Unit L (NWSW), 2190' FSL & 550' FWL At top prod. Interval reported below Same as above At total depth Same as above						11. Sec., T., R., M., on Block and Survey or Area Sec. 19, T29N, R07W			12. County or Parish Rio Arriba	
14. Date Spudded 10/25/1981		15. Date T.D. Reached 11/3/1981		16. Date Completed 5/24/2024 <input type="checkbox"/> D & A <input checked="" type="checkbox"/> Ready to Prod.		17. Elevations (DF, RKB, RT, GL)* 6,712'				
18. Total Depth: 7,960'		19. Plug Back T.D.: 7,943'		20. Depth Bridge Plug Set: MD TVD		22. Was well cored? <input checked="" type="checkbox"/> No <input type="checkbox"/> Yes (Submit analysis) Was DST run? <input checked="" type="checkbox"/> No <input type="checkbox"/> Yes (Submit report) Directional Survey? <input checked="" type="checkbox"/> No <input type="checkbox"/> Yes (Submit copy)				
21. Type Electric & Other Mechanical Logs Run (Submit copy of each)										
23. Casing and Liner Record (Report all strings set in well)										
Hole Size	Size/Grade	Wt. (#/ft.)	Top (MD)	Bottom (MD)	Stage Cementer Depth	No. of Sk. & Type of Cement	Slurry Vol. (BBL)	Cement top*	Amount Pulled	
12 1/4"	9 5/8" K-55	36#	0	314'	n/a	190 cf				
8 3/4"	7" K-55	20#	0	3,747'	n/a	389 cf				
6 1/4"	4 1/2" K-55	10.5#		7,960'	n/a	870 cf				
24. Tubing Record										
Size	Depth Set (MD)	Packer Depth (MD)	Size	Depth Set (MD)	Packer Depth (MD)	Size	Depth Set (MD)	Packer Depth (MD)		
2 3/8"	7,771'									
25. Producing Intervals					26. Perforation Record					
Formation		Top	Bottom	Perforated Interval		Size	No. Holes	Perf. Status		
A) Mesaverde		5,045'	5,802'	1 SPF		0.34	48	open		
B)										
C)										
D)										
TOTAL							48			
27. Acid, Fracture, Treatment, Cement Squeeze, etc.										
Depth Interval		Amount and Type of Material								
5045-5802		BDW w/water & 1000 gal 15% HCl. Foam frac'd Mesaverde w/ 250,613# 20/40 sand, 87,990 gal slickwater & 3.32M SCF N2 70Q								
-										
-										
28. Production - Interval A										
Date First Produced	Test Date	Hours Tested	Test Production	Oil BBL	Gas MCF	Water BBL	Oil Gravity Corr. API	Gas Gravity	Production Method	
5/24/2024	5/24/2024	4	➡	0	84	0	n/a	n/a	Flowing	
Choke Size	Tbg. Press. Flwg.	Csg. Press.	24 Hr. Rate	Oil BBL	Gas MCF	Water BBL	Gas/Oil Ratio	Well Status		
20/64"	10 psi	115 psi	➡	0	84	0	n/a	Producing		
28a. Production - Interval B										
Date First Produced	Test Date	Hours Tested	Test Production	Oil BBL	Gas MCF	Water BBL	Oil Gravity Corr. API	Gas Gravity	Production Method	
			➡							
Choke Size	Tbg. Press. Flwg. SI	Csg. Press.	24 Hr. Rate	Oil BBL	Gas MCF	Water BBL	Gas/Oil Ratio	Well Status		
			➡							

*(See instructions and spaces for additional data on page 2)

28b. Production - Interval C

Date First Produced	Test Date	Hours Tested	Test Production	Oil BBL	Gas MCF	Water BBL	Oil Gravity Corr. API	Gas Gravity	Production Method
			➡						
Choke Size	Tbg. Press. Flwg. SI	Csg. Press.	24 Hr. Rate	Oil BBL	Gas MCF	Water BBL	Gas/Oil Ratio	Well Status	
			➡						

28c. Production - Interval D

Date First Produced	Test Date	Hours Tested	Test Production	Oil BBL	Gas MCF	Water BBL	Oil Gravity Corr. API	Gas Gravity	Production Method
			➡						
Choke Size	Tbg. Press. Flwg. SI	Csg. Press.	24 Hr. Rate	Oil BBL	Gas MCF	Water BBL	Gas/Oil Ratio	Well Status	
			➡						

29. Disposition of Gas (Solid, used for fuel, vented, etc.)

Sold

30. Summary of Porous Zones (Include Aquifers):

Show all important zones of porosity and contents thereof: Cored intervals and all drill-stem test, including depth interval tested, cushion used, time tool open, flowing and shut-in pressures and recoveries.

31. Formation (Log) Markers

Formation	Top	Bottom	Descriptions, Contents, etc.	Name	Top Meas. Depth
Ojo Alamo	2,257'	2431'	White, cr-gr ss	Ojo Alamo	2,257'
Kirtland	2,431'		Gry sh interbedded w/tight, gry, fine-gr ss.	Kirtland	2,431'
Fruitland	2,927'	3224'	Dk gry-gry carb sh, coal, grn silts, light-med gry, tight, fine gr ss.	Fruitland	2,927'
Pictured Cliffs	3,224'		Bn-Gry, fine grn, tight ss.	Pictured Cliffs	3,224'
Lewis			Shale w/ siltstone stingers	Lewis	
Huerfanito Bentonite			White, waxy chalky bentonite	Huerfanito Bentonite	
Chacra	4,189'	4658'	Gry fn grn silty, glauconitic sd stone w/ drk gry shale	Chacra	4,189'
Cliff House	4,658'		Light gry, med-fine gr ss, carb sh & coal	Cliff House	4,658'
Menefee	5,040'	5410'	Med-dark gry, fine gr ss, carb sh & coal	Menefee	5,040'
Point Lookout	5,410'	5910'	Med-light gry, very fine gr ss w/ frequent sh breaks in lower part of formation	Point Lookout	5,410'
Mancos	5,910'		Dark gry carb sh.	Mancos	5,910'
Gallup	6,447'	7378'	Lt. gry to brn calc carb micac gluc silts & very fine gry gry ss w/ irreg. interbed sh.	Gallup	6,447'
Greenhorn	7,378'		Highly calc gry sh w/ thin lmst.	Greenhorn	7,378'
Graneros	7,447'	7582'	Dk gry shale, fossil & carb w/ pyrite incl.	Graneros	7,447'
Dakota	7,582'		Lt to dark gry foss carb sl calc sl sitty ss w/ pyrite incl thin sh bands cly Y shale breaks	Dakota	7,582'
Morrison			Interbed grn, brn & red waxy sh & fine to coard grn ss	Morrison	

32. Additional remarks (include plugging procedure):

This well is currently producing as a MV/DK commingle per DHC-5386. MV PA NMNM78417A.

33. Indicate which items have been attached by placing a check in the appropriate boxes:

☐ Electrical/Mechanical Logs (1 full set req'd.)☐ Geologic Report☐ DST Report☐ Directional Survey

☐ Sundry Notice for plugging and cement verification☐ Core Analysis☐ Other:

34. I hereby certify that the foregoing and attached information is complete and correct as determined from all available records (see attached instructions)*

Name (please print)Cherylene Weston

TitleOperations/Regulatory Technician

SignatureCherylene Weston

Date5/29/2024

District I
1625 N. French Dr., Hobbs, NM 88240
Phone:(575) 393-6161 Fax:(575) 393-0720
District II
811 S. First St., Artesia, NM 88210
Phone:(575) 748-1283 Fax:(575) 748-9720
District III
1000 Rio Brazos Rd., Aztec, NM 87410
Phone:(505) 334-6178 Fax:(505) 334-6170
District IV
1220 S. St Francis Dr., Santa Fe, NM 87505
Phone:(505) 476-3470 Fax:(505) 476-3462

State of New Mexico
Energy, Minerals and Natural Resources
Oil Conservation Division
1220 S. St Francis Dr.
Santa Fe, NM 87505

ACKNOWLEDGMENTS

Action 352519

ACKNOWLEDGMENTS

Operator: HILCORP ENERGY COMPANY 1111 Travis Street Houston, TX 77002	OGRID: 372171
	Action Number: 352519
	Action Type: [C-104] Completion Packet (C-104C)

ACKNOWLEDGMENTS

<input checked="" type="checkbox"/>	I hereby certify that the required Water Use Report has been, or will be, submitted for this wells completion.
<input checked="" type="checkbox"/>	I hereby certify that the required FracFocus disclosure has been, or will be, submitted for this wells completion.

District I
1625 N. French Dr., Hobbs, NM 88240
Phone:(575) 393-6161 Fax:(575) 393-0720
District II
811 S. First St., Artesia, NM 88210
Phone:(575) 748-1283 Fax:(575) 748-9720
District III
1000 Rio Brazos Rd., Aztec, NM 87410
Phone:(505) 334-6178 Fax:(505) 334-6170
District IV
1220 S. St Francis Dr., Santa Fe, NM 87505
Phone:(505) 476-3470 Fax:(505) 476-3462

State of New Mexico
Energy, Minerals and Natural Resources
Oil Conservation Division
1220 S. St Francis Dr.
Santa Fe, NM 87505

CONDITIONS

Action 352519

CONDITIONS

Operator: HILCORP ENERGY COMPANY 1111 Travis Street Houston, TX 77002	OGRID: 372171
	Action Number: 352519
	Action Type: [C-104] Completion Packet (C-104C)

CONDITIONS

Created By	Condition	Condition Date
smcgrath	None	6/11/2024