

Submit 1 Copy To Appropriate District Office

District I – (575) 393-6161
1625 N. French Dr., Hobbs, NM 88240
District II – (575) 748-1283
811 S. First St., Artesia, NM 88210
District III – (505) 334-6178
1000 Rio Brazos Rd., Aztec, NM 87410
District IV – (505) 476-3460
1220 S. St. Francis Dr., Santa Fe, NM 87505

State of New Mexico
Energy, Minerals and Natural Resources

OIL CONSERVATION DIVISION
1220 South St. Francis Dr.
Santa Fe, NM 87505

Form C-103
Revised July 18, 2013

<p>WELL API NO. 30-025-34491</p>	
<p>5. Indicate Type of Lease STATE <input checked="" type="checkbox"/> FEE <input type="checkbox"/></p>	
<p>6. State Oil & Gas Lease No. V-4190-3</p>	
<p>7. Lease Name or Unit Agreement Name State 18</p>	
<p>8. Well Number #001</p>	
<p>9. OGRID Number 190595</p>	
<p>10. Pool name or Wildcat Tatum, Upper Penn</p>	
<p>SUNDY NOTICES AND REPORTS ON WELLS (DO NOT USE THIS FORM FOR PROPOSALS TO DRILL OR TO DEEPEN OR PLUG BACK TO A DIFFERENT RESERVOIR. USE "APPLICATION FOR PERMIT" (FORM C-101) FOR SUCH PROPOSALS.)</p>	
<p>1. Type of Well: Oil Well <input checked="" type="checkbox"/> Gas Well <input type="checkbox"/> Other <input type="checkbox"/></p>	
<p>2. Name of Operator Endeavor Energy Resources, LP</p>	
<p>3. Address of Operator 110 North Marienfeld, Suite 200, Midland, TX 79701</p>	
<p>4. Well Location Unit Letter <u>A</u> : <u>330</u> feet from the <u>N</u> line and <u>330</u> feet from the <u>E</u> line Section <u>18</u> Township <u>13S</u> Range <u>36E</u> NMPM County <u>Lea</u> <u>Eddy</u></p>	
<p>11. Elevation (Show whether DR, RKB, RT, GR, etc.) 4005' GR</p>	

12. Check Appropriate Box to Indicate Nature of Notice, Report or Other Data

NOTICE OF INTENTION TO:		SUBSEQUENT REPORT OF:	
PERFORM REMEDIAL WORK <input type="checkbox"/>	PLUG AND ABANDON <input type="checkbox"/>	REMEDIAL WORK <input type="checkbox"/>	ALTERING CASING <input type="checkbox"/>
TEMPORARILY ABANDON <input type="checkbox"/>	CHANGE PLANS <input type="checkbox"/>	COMMENCE DRILLING OPNS. <input type="checkbox"/>	P AND A <input checked="" type="checkbox"/>
PULL OR ALTER CASING <input type="checkbox"/>	MULTIPLE COMPL <input type="checkbox"/>	CASING/CEMENT JOB <input type="checkbox"/>	PNR <input type="checkbox"/>
DOWNHOLE COMMINGLE <input type="checkbox"/>			
CLOSED-LOOP SYSTEM <input type="checkbox"/>			
OTHER: <input type="checkbox"/>		OTHER: <input type="checkbox"/>	

13. Describe proposed or completed operations. (Clearly state all pertinent details, and give pertinent dates, including estimated date of starting any proposed work). SEE RULE 19.15.7.14 NMAC. For Multiple Completions: Attach wellbore diagram of proposed completion or recompletion.

4-7-2012 Moved in Mico Services Rig. Rigged up, set anchors, tested. 4-9-2012 RIH in to 4450' set plug test csg. Released plug and pulled out of hole. Set flow lines for water and cmt. truck. 4/10-2012 Drove to location. Wait on cement trucks. Drove home. 4-11-2012 RIG up cement truck RIH to 4550' 30 sacks. Waited 4 hrs. tag plug @ 4425'. Lay down 70 joints pumped 50 sx's cement, tagged @ 2190'. layed down 55 joints, pumped 50 sx's. tagged @ 400", waited one hour, layed down 15 joints. Pumped 20 sx's cement and circulated to surface. Rigged down & moved off. Cut well head and anchors. Welded DHM, cleaned location. Moved equipment off.

Spud Date:

Rig Release Date:

I hereby certify that the information above is true and complete to the best of my knowledge and belief.

SIGNATURE

TITLE Senior Reg. Analyst

DATE 5/26/2024

Type or print name Jan South

E-mail address: jsouth@eeronline.com

PHONE: 432-687-1575

For State Use Only

APPROVED BY:

TITLE

Compliance Officer A

DATE 6/20/24

Conditions of Approval (if any)

May 5, 2010 Current WBD

ENDEAVOR ENERGY RESOURCES

State 18 #1

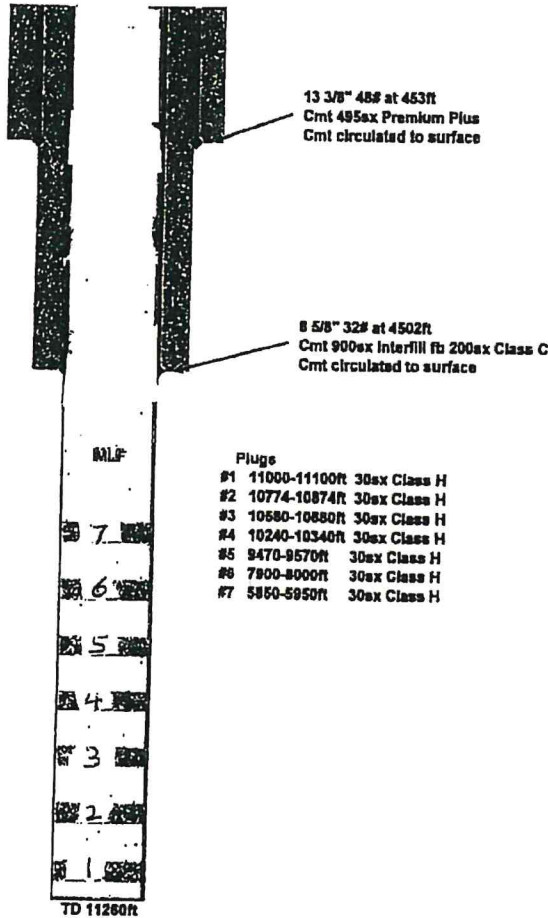
API # 30-025-34491

330 FNL x 330 FEL

Section 18, T13S, R38E

Lea County, New Mexico

Anhy 2162
TS 2243
Yates 3357
T Rivers 3380
Queen 3985
Grayburg 4338
San Andres 4462
Glorieta 5950
Blaine 6020
Tubb 7350
Drinkard 7440
Abo 8082
WC 9570
Cisco 10855
Canyon 10922



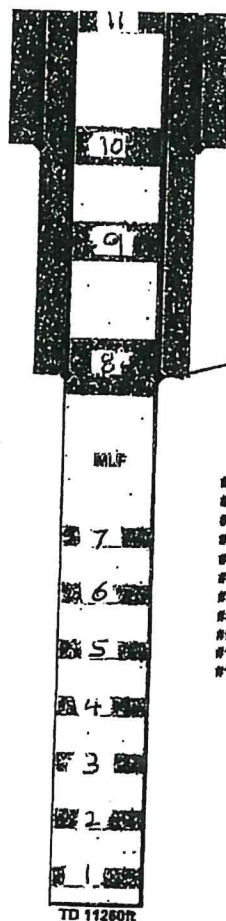
ENDEAVOR ENERGY RESOURCES, LP REENTERED WELL FOR SAN ANDRES SWD
05-10-2010 THRU 05-26-2010

APRIL 12, 2012 Subsequent WBD

ENDEAVOR ENERGY RESOURCES

State 18 # 1
API # 30-025-34491
330 FNL x 330 FEL
Section 18, T13S, R38E
Lea County, New Mexico

Anhy 2162
TS 2243
Yates 3357
7 Rivers 3380
Queen 3985
Grayburg 4338
San Andres 4482
Glorieta 5950
Blaine 6020
Tubb 7350
Drinkard 7460
Abo 8082
WC 9570
Cisco 10555
Canyon 10922



13 3/8" 48# at 453ft
Cmt 495ex Premium Plus
Cmt circulated to surface

8 5/8" 32# at 4502ft
Cmt 800ex Interfill fb 200ex Class C
Cmt circulated to surface

Plugs

- #1 11000-11100ft 30ex Class H
- #2 10774-10874ft 30ex Class H
- #3 10580-10680ft 30ex Class H
- #4 10240-10340ft 30ex Class H
- #5 9470-9570ft 30ex Class H
- #6 7900-8000ft 30ex Class H
- #7 5860-5950ft 30ex Class H
- #8 4450 - 4450ft - 30ex Class "C" cmt. WOC hrs. Tag.
- #9 2,290 - 2190 - 505x Class "C" cmt. Tag 2190ft
- #10 500 - 400 - 505x Class "C" cmt. Tag 400ft.
- #11 60 - 0ft - 285x Class "C". Circ to Surface.

ENDEAVOR ENERGY RESOURCES, LP PLUGGED WELL (PLUGS 8, 9, 10, 11)
04-07-2012 THRU 04-10-2012

May 5, 2010 Current WBD

ENDEAVOR ENERGY RESOURCES

State 18 #1

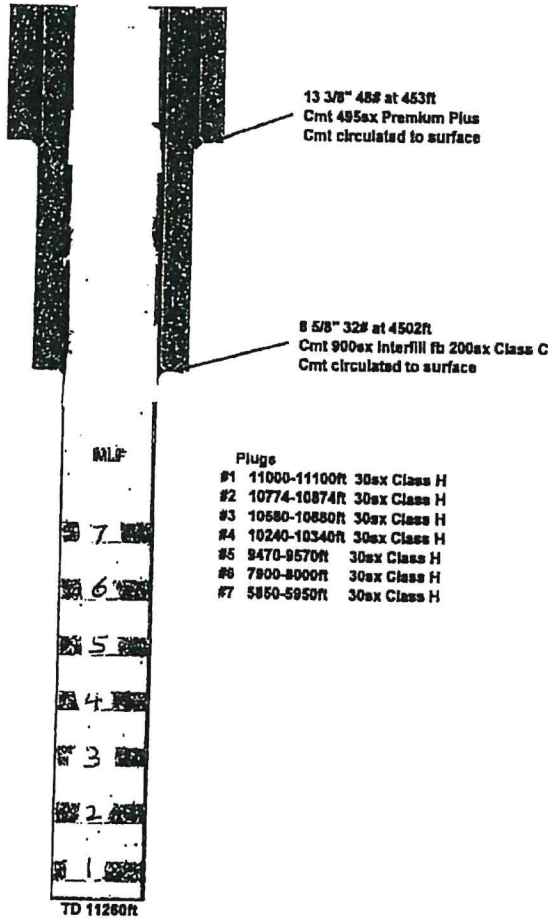
API # 30-025-34491

330 FNL x 330 FEL

Section 18, T13S, R38E

Lea County, New Mexico

Anhy 2162
TS 2243
Yates 3357
T Rivers 3380
Queen 3985
Grayburg 4338
San Andres 4462
Glorieta 5950
Blaine 6020
Tubb 7350
Drinkard 7440
Abo 8082
WC 9570
Cisco 10855
Canyon 10922

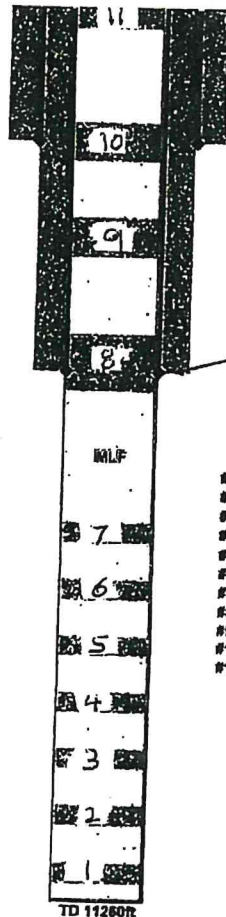


ENDEAVOR ENERGY RESOURCES, LP REENTERED WELL FOR SAN ANDRES SWD
05-10-2010 THRU 05-26-2010

APRIL 12, 2012 Subsequent WBD

ENDEAVOR ENERGY RESOURCES
 State 18 # 1
 API # 30-025-34491
 330 FNL x 330 FEL
 Section 18, T13S, R38E
 Lea County, New Mexico

Anhy 2162
 TS 2243
 Yates 3357
 7 Rivers 3380
 Queen 3985
 Grayburg 4338
 San Andres 4482
 Glorieta 5950
 Blinbry 6020
 Tubb 7350
 Drinkard 7460
 Abo 8082
 WC 9570
 Cisco 10555
 Canyon 10922



Plugs
 #1 11000-11100ft 30sx Class H
 #2 10774-10874ft 30sx Class H
 #3 10580-10680ft 30sx Class H
 #4 10240-10340ft 30sx Class H
 #5 9470-9570ft 30sx Class H
 #6 7900-8000ft 30sx Class H
 #7 5860-5950ft 30sx Class H
 #8 4450 - 4450ft - 30sx Class "C" cmt. WOC 4 hrs. Tag.
 #9 2,290 - 2190 - 50sx Class "C" cmt. Tag 2190ft
 #10 500 - 400 - 50 sx Class "C" cmt. Tag 400ft.
 #11 60 - 0ft - 28sx Class "C". Circ to Surface.

ENDEAVOR ENERGY RESOURCES, LP PLUGGED WELL (PLUGS 8, 9, 10, 11)
 04-07-2012 THRU 04-12-2012

District I
1625 N. French Dr., Hobbs, NM 88240
Phone:(575) 393-6161 Fax:(575) 393-0720
District II
811 S. First St., Artesia, NM 88210
Phone:(575) 748-1283 Fax:(575) 748-9720
District III
1000 Rio Brazos Rd., Aztec, NM 87410
Phone:(505) 334-6178 Fax:(505) 334-6170
District IV
1220 S. St Francis Dr., Santa Fe, NM 87505
Phone:(505) 476-3470 Fax:(505) 476-3462

State of New Mexico
Energy, Minerals and Natural Resources
Oil Conservation Division
1220 S. St Francis Dr.
Santa Fe, NM 87505

COMMENTS

Action 350893

COMMENTS

Operator: ENDEAVOR ENERGY RESOURCES, LP 110 North Marienfeld Midland, TX 79701	OGRID: 190595
	Action Number: 350893
	Action Type: [C-103] Sub. Plugging (C-103P)

COMMENTS

Created By	Comment	Comment Date
plmartinez	DATA ENTRY PM	6/21/2024

District I
1625 N. French Dr., Hobbs, NM 88240
Phone:(575) 393-6161 Fax:(575) 393-0720
District II
811 S. First St., Artesia, NM 88210
Phone:(575) 748-1283 Fax:(575) 748-9720
District III
1000 Rio Brazos Rd., Aztec, NM 87410
Phone:(505) 334-6178 Fax:(505) 334-6170
District IV
1220 S. St Francis Dr., Santa Fe, NM 87505
Phone:(505) 476-3470 Fax:(505) 476-3462

State of New Mexico
Energy, Minerals and Natural Resources
Oil Conservation Division
1220 S. St Francis Dr.
Santa Fe, NM 87505

CONDITIONS

Action 350893

CONDITIONS

Operator: ENDEAVOR ENERGY RESOURCES, LP 110 North Marienfeld Midland, TX 79701	OGRID: 190595
	Action Number: 350893
	Action Type: [C-103] Sub. Plugging (C-103P)

CONDITIONS

Created By	Condition	Condition Date
kfortner	Need C103Q and marker photo to release	6/20/2024