

Well Name: NA DZIS PAH	Well Location: T30N / R16W / SEC 1 / NWNE / 36.848434 / -108.474213	County or Parish/State: SAN JUAN / NM
Well Number: 2	Type of Well: OIL WELL	Allottee or Tribe Name: EASTERN NAVAJO
Lease Number: 14206034903	Unit or CA Name:	Unit or CA Number:
US Well Number: 300451001600S1	Operator: H & S PRODUCTION	

Subsequent Report

Sundry ID: 2799584

Type of Submission: Subsequent Report	Type of Action: Plug and Abandonment
Date Sundry Submitted: 07/09/2024	Time Sundry Submitted: 01:50
Date Operation Actually Began: 06/16/2024	

Actual Procedure: Work completed on June 19, 2024. See attached detail report, including after work wellbore schematic and pictures of the marker. Aztec Well Servicing Co. completed the work as the contractor for New Mexico Oil Conservation Division. The Bureau of Land Management Farmington Field Office and the Federal Indian Minerals Office requested the work to be completed.

SR Attachments

Actual Procedure

Na_Dzis_Pa_2_Final_Job_Report_20240709134856.pdf

BLM Point of Contact

BLM POC Name: KENNETH G RENNICK	BLM POC Title: Petroleum Engineer
BLM POC Phone: 5055647742	BLM POC Email Address: krennick@blm.gov
Disposition: Accepted	Disposition Date: 07/09/2024
Signature: Kenneth Rennick	

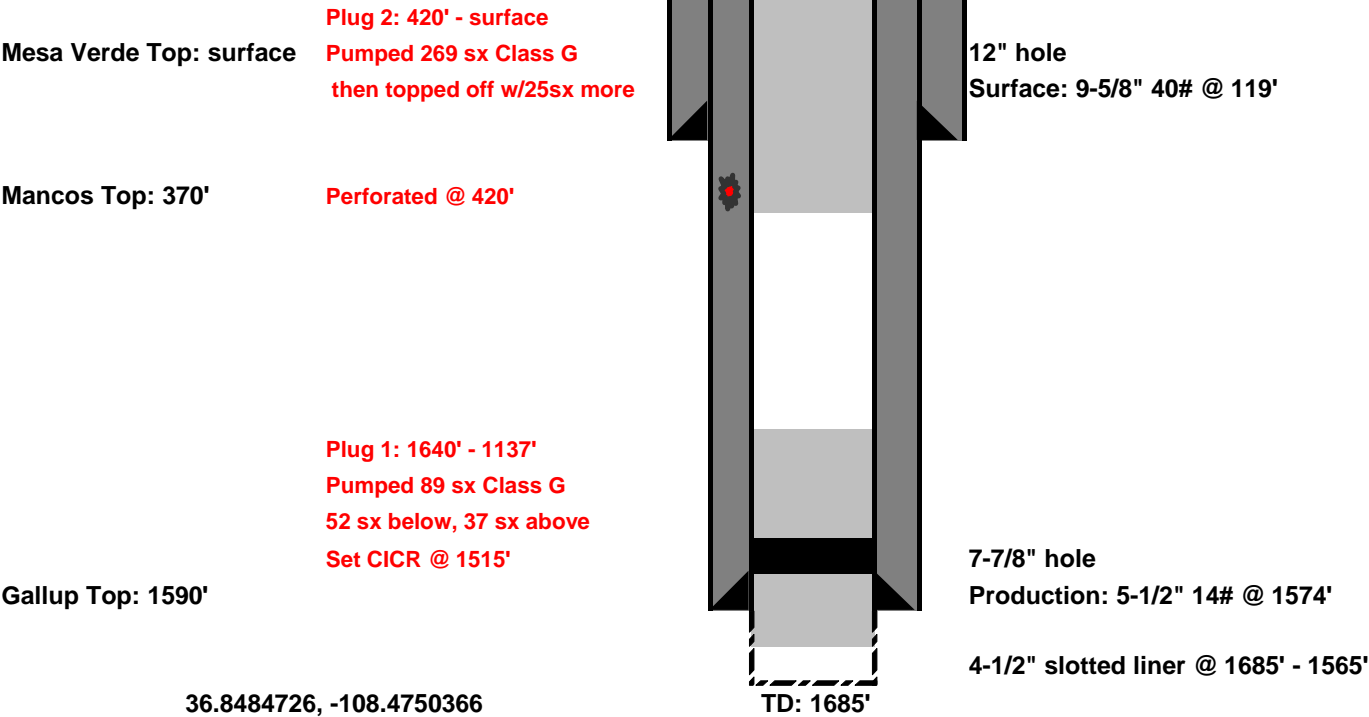
[illegible]

[illegible]

CUSTOMER:		NEW MEXICO OCD		DATE:		June 18, 2024		API Number:		30-045-10016		TYPE OF JOB:		P & A																																									
LEASE & WELL NAME:		NA DZIS PAH #2		LOCATION:		Sec.01,T30N,R16W		SERVICE SUP:		DEAN MESTAS																																													
SERVICE CONTRACTOR:		CT2		OPERATOR:		AZTEC WELL SERVICE		COUNTY:		SAN JUAN		STATE:		NEW MEXICO																																									
MATERIALS FURNISHED:		TYPE OF PLUGS:		LIST CSG. HARDWARE:		SQUEEZE MANIFOLD:		TOP OF EACH FLUID:		PHYSICAL SLURRY PROPERTIES:																																													
		SLURRY WEIGHT: Lb/gal								SLURRY YIELD: Cuf/sk		WATER REQ.: Gals/sk		PUMP TIME: hr:mm		SLURRY: bbls		MIX WATER: bbls																																					
		TOP								BOTTOM																																													
PRE-FLUSH - FRESH WATER																																																							
Plug 1: Pumped 18.3bbls cement slurry ((89sx; 15.8ppg, 1.15cuf/ft, 5.0gals/sk) 52sx below ret., 37sx above ret.														1137'		15.80		1.15		5.00				18.3		10.6																													
Plug 2: Pumped 55.2bbls cmnt slurry ((269sx; 15.8ppg, 1.15cuf/ft, 5.0gals/sk) 3.0bbls out BH, 2.0bbls out csg.														Surface		15.80		1.15		5.00				55.2		32.0																													
AVAILABLE MIX WATER: 300.0 BBLs														AVAILABLE DISPLACEMENT WATER: 280.0 BBLs								TOTAL MIX WATER: 42.6																																	
HOLE			TBG.-CSG.-D.P.				TBG.-CSG.-D.P.								COLLAR DEPTHS																																								
SIZE			% EXCESS			DEPTH			SIZE			WEIGHT			TYPE			DEPTH			SHOE			FLOAT			STAGE																												
12			100%			119'			9 5/8			40.00			K-55			119'			2 3/8			4.70			J-55			1515'																									
LAST CASING			PKR-CMT RET-BR PL-LINER				PERF DEPTHS								TOP CONNECTION				WELLBORE FLUID																																				
SIZE			WEIGHT			TYPE			DEPTH			BRAND & TYPE			DEPTH			TOP			BOTTOM			SIZE			THREAD						TYPE			WEIGHT																			
5 1/2			14.00			K-55			1574'			SOT			1515'			1565'			1685'			2 3/8			8 ROUND						PRODUCED WATER			8.40																			
CALCULATED DISPLACEMENT VOLUME; BBL				CAL. PSI				CAL. MAX PSI				OP. MAX				MAX TBG. PSI				MAX CASING PSI								DISPLACEMENT FLUID				WATER																							
TUBING				CASING				CASING				TOTAL				BUMP PLUG				TO REVERSE				SQ. PSI				RATED				OPER				RATED				OPER				TYPE				WEIGHT				SOURCE			

[illegible]

NMOCD
Final P&A WBD
Na Dzis Pah #002
API: 30-045-10016





36.84844°N, 108.47503°W



Map



Waypoints



Tracks









District I
1625 N. French Dr., Hobbs, NM 88240
Phone:(575) 393-6161 Fax:(575) 393-0720
District II
811 S. First St., Artesia, NM 88210
Phone:(575) 748-1283 Fax:(575) 748-9720
District III
1000 Rio Brazos Rd., Aztec, NM 87410
Phone:(505) 334-6178 Fax:(505) 334-6170
District IV
1220 S. St Francis Dr., Santa Fe, NM 87505
Phone:(505) 476-3470 Fax:(505) 476-3462

State of New Mexico
Energy, Minerals and Natural Resources
Oil Conservation Division
1220 S. St Francis Dr.
Santa Fe, NM 87505

CONDITIONS

Action 362827

CONDITIONS

Operator: AZTEC WELL SERVICING CO 300 Legion Road Aztec, NM 87410	OGRID: 191362
	Action Number: 362827
	Action Type: [C-103] Sub. Plugging (C-103P)

CONDITIONS

Created By	Condition	Condition Date
loren.diede	None	7/12/2024