

District I
1625 N. French Dr., Hobbs, NM 88240
Phone: (575) 393-6161 Fax: (575) 393-0720
District II
811 S. First St., Artesia, NM 88210
Phone: (575) 748-1283 Fax: (575) 748-9720
District III
1000 Rio Brazos Road, Aztec, NM 87410
Phone: (505) 334-6178 Fax: (505) 334-6170
District IV
1220 S. St. Francis Dr., Santa Fe, NM 87505
Phone: (505) 476-3460 Fax: (505) 476-3462

State of New Mexico
Energy, Minerals & Natural Resources
Department
OIL CONSERVATION DIVISION
1220 South St. Francis Dr.
Santa Fe, NM 87505

FORM C-102

Revised August 1, 2011

Submit one copy to appropriate
District Office

AMENDED REPORT

WELL LOCATION AND ACREAGE DEDICATION PLAT

Table with 3 columns: API Number (30-025-49682), Pool Code (51687), Pool Name (Red Tank; Bone Spring East), Property Code, Property Name (DAGGER LAKE SOUTH 8 FED COM), Well Number (562H), OGRID No. (228937), Operator Name (MATADOR PRODUCTION COMPANY), Elevation (3569')

Surface Location

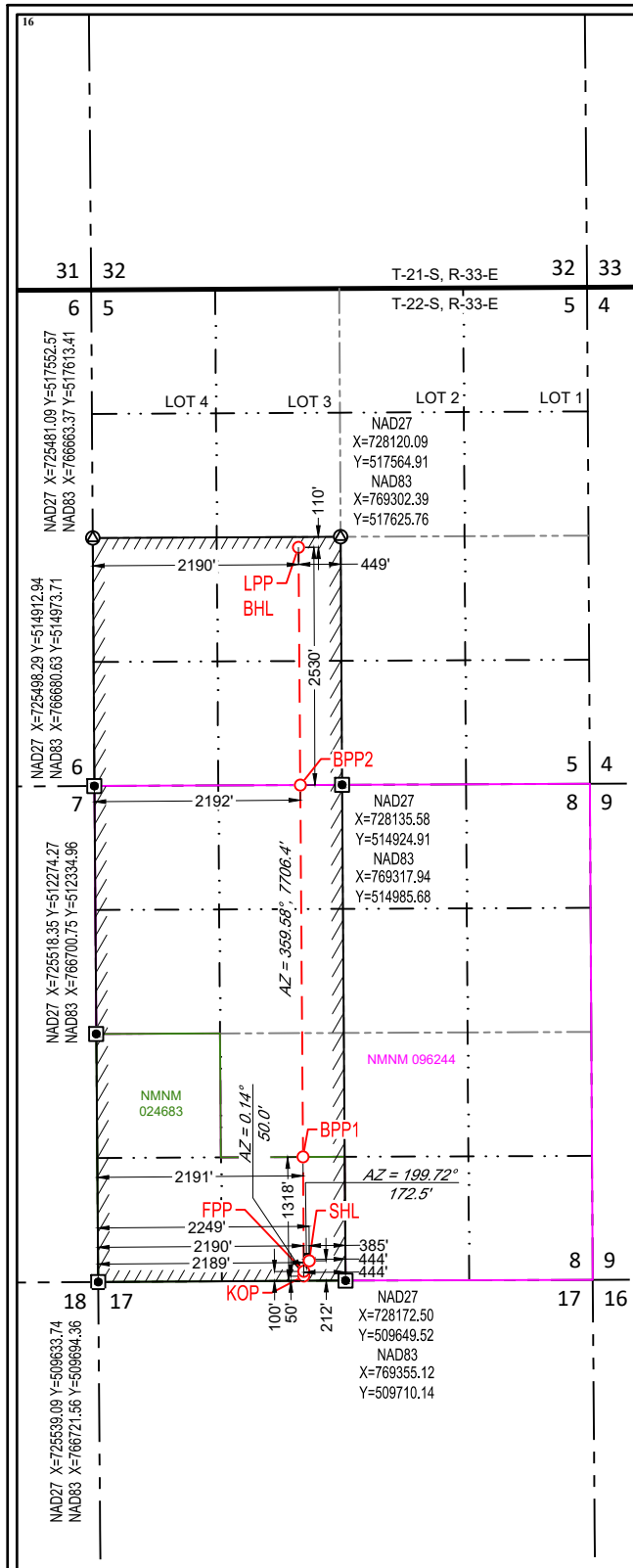
Table with 10 columns: UL or lot no. (N), Section (8), Township (22-S), Range (33-E), Lot Idn (-), Feet from the (212'), North/South line (SOUTH), Feet from the (2249'), East/West line (WEST), County (LEA)

Bottom Hole Location If Different From Surface

Table with 10 columns: UL or lot no. (K), Section (5), Township (22-S), Range (33-E), Lot Idn (-), Feet from the (2530'), North/South line (SOUTH), Feet from the (2190'), East/West line (WEST), County (LEA)

Table with 4 columns: Dedicated Acres (480), Joint or Infill, Consolidation Code, Order No.

No allowable will be assigned to this completion until all interests have been consolidated or a non-standard unit has been approved by the division.



NEW MEXICO EAST NAD 1983

SURFACE LOCATION (SHL)

212' FSL - SEC. 8
2249' FWL - SEC. 8
X=768969 Y=509920
LAT.: N 32.3996796
LONG.: W 103.5958019

KICK OFF POINT (KOP)

50' FSL - SEC. 8
2189' FWL - SEC. 8
X=768911 Y=509757
LAT.: N 32.3992344
LONG.: W 103.5959941

FIRST PERFORATION POINT (FPP)

100' FSL - SEC. 8
2190' FWL - SEC. 8
X=768911 Y=509807
LAT.: N 32.3993718
LONG.: W 103.5959926

BLM PERFORATION POINT (BPP1)

1318' FSL - SEC. 8
2191' FWL - SEC. 8
X=768902 Y=511026
LAT.: N 32.4027203
LONG.: W 103.5959944

BLM PERFORATION POINT (BPP2)

0' FNL - SEC. 8
2192' FWL - SEC. 8
X=768873 Y=514984
LAT.: N 32.4135998
LONG.: W 103.5960002

LAST PERFORATION POINT (LPP)
BOTTOM HOLE LOCATION (BHL)

2530' FSL - SEC. 5
2190' FWL - SEC. 5
X=768854 Y=517514
LAT.: N 32.4205541
LONG.: W 103.5960038

OPERATOR CERTIFICATION

I hereby certify that the information contained herein is true and complete to the best of my knowledge and belief, and that this organization either owns a working interest or unleased mineral interest in the land including the proposed bottom hole location or has a right to drill this well at this location pursuant to a contract with an owner of such a mineral or working interest, or to a voluntary pooling agreement or a compulsory pooling order heretofore entered by the division.

Nicky Fitzgerald
05/29/2024

Nicky Fitzgerald
Printed Name

nicky.fitzgerald@matadorresources.com
E-mail Address

SURVEYOR CERTIFICATION

I hereby certify that the well location shown on this plat was plotted from field notes of actual surveys made by me or under my supervision, and that the same is true to the best of my belief.

04/30/2022

Date of Survey
Signature and Seal of Professional Surveyor



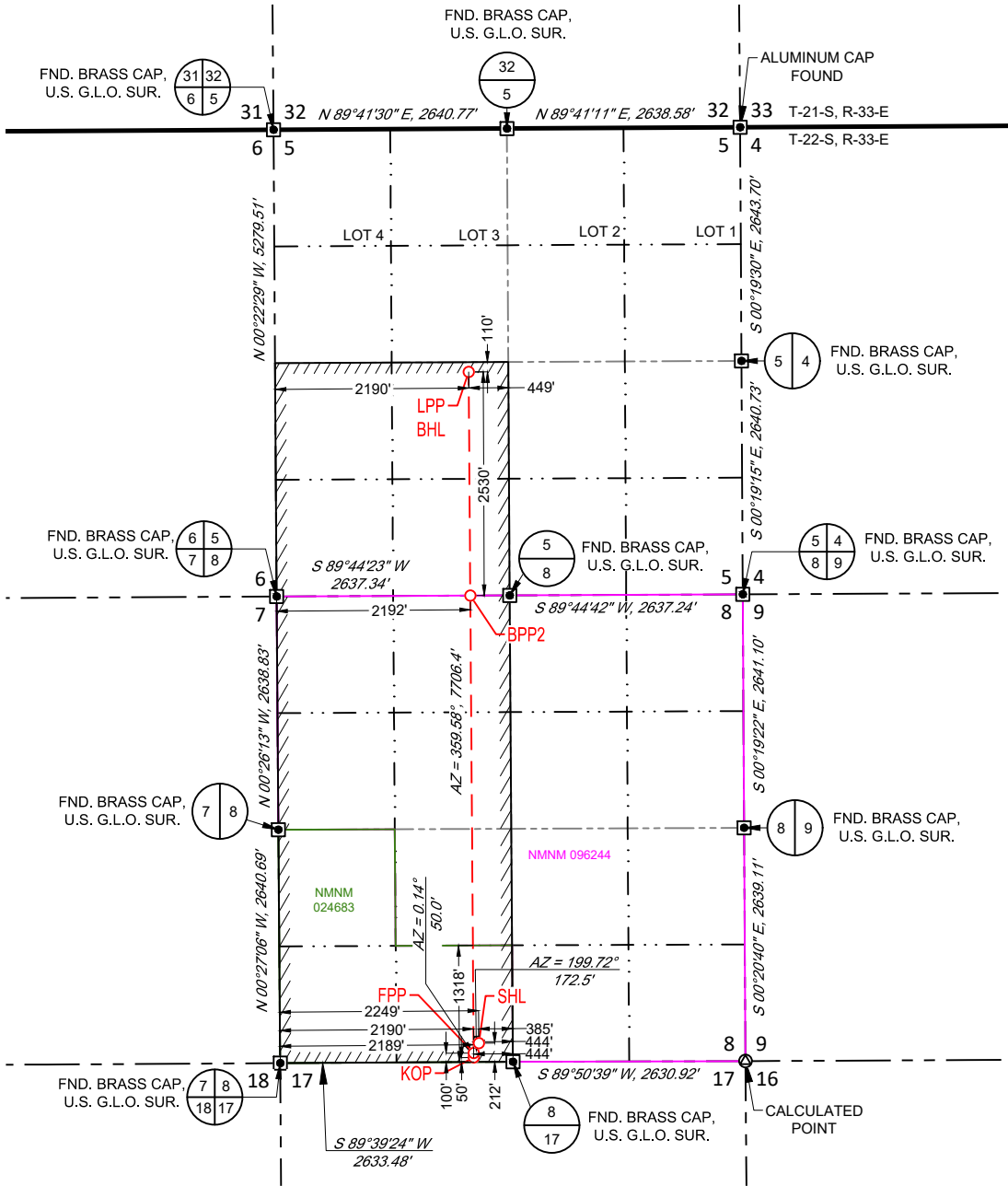
Certificate Number

NEW MEXICO EAST
NAD 1927

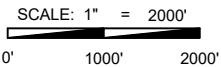
Table with 2 columns: SURFACE LOCATION (SHL), KICK OFF POINT (KOP), FIRST PERFORATION POINT (FPP), BLM PERFORATION POINT (BPP1), BLM PERFORATION POINT (BPP2), LAST PERFORATION POINT (LPP) BOTTOM HOLE LOCATION (BHL)



SECTION 8, TOWNSHIP 22-S, RANGE 33-E, N.M.P.M. LEA COUNTY, NEW MEXICO



NEW MEXICO EAST NAD 1983
SURFACE LOCATION (SHL) 212' FSL - SEC. 8 2249' FWL - SEC. 8 X=768969 Y=509920 LAT.: N 32.3996796 LONG.: W 103.5958019
KICK OFF POINT (KOP) 50' FSL - SEC. 8 2189' FWL - SEC. 8 X=768911 Y=509757 LAT.: N 32.3992344 LONG.: W 103.5959941
FIRST PERFORATION POINT (FPP) 100' FSL - SEC. 8 2190' FWL - SEC. 8 X=768911 Y=509807 LAT.: N 32.3993718 LONG.: W 103.5959926
BLM PERFORATION POINT (BPP1) 1318' FSL - SEC. 8 2191' FWL - SEC. 8 X=768902 Y=511026 LAT.: N 32.4027203 LONG.: W 103.5959944
BLM PERFORATION POINT (BPP2) 0' FNL - SEC. 8 2192' FWL - SEC. 8 X=768873 Y=514984 LAT.: N 32.4135998 LONG.: W 103.5960002
LAST PERFORATION POINT (LPP) BOTTOM HOLE LOCATION (BHL) 2530' FSL - SEC. 5 2190' FWL - SEC. 5 X=768854 Y=517514 LAT.: N 32.4205541 LONG.: W 103.5960038



LEASE NAME & WELL NO.: DAGGER LAKE SOUTH 8 FED COM 562H

SECTION 8 TWP 22-S RGE 33-E SURVEY N.M.P.M.
 COUNTY LEA STATE NM
 DESCRIPTION 212' FSL & 2249' FWL

DISTANCE & DIRECTION
 FROM INT. OF US-180 E/US-62 E & NM-176 W. GO SOUTHEAST ON NM-176 W ±6.4 MILES. THENCE SOUTH (RIGHT) ON A LEASE RD. ±1.2 MILES. THENCE SOUTHEAST (LEFT) ON DELAWARE BASIN RD. ±5.3 MILES. THENCE NORTHEAST (LEFT) ON A LEASE RD. ±0.9 MILES, THENCE SOUTH (RIGHT) ON A LEASE RD. ±2.9 MILES, THENCE EAST (LEFT) ON A LEASE RD. ±0.7 MILES TO A POINT ±540 FEET NORTH OF THE LOCATION.



Angel M. Baeza, P.S. No. 25116
 May 15, 2024

ALL BEARINGS, DISTANCES, AND COORDINATE VALUES CONTAINED HEREON ARE GRID BASED UPON THE NEW MEXICO COORDINATE SYSTEM OF 1983, EAST ZONE, U.S. SURVEY FEET
 THIS EASEMENT/SERVITUDE LOCATION SHOWN HEREON HAS BEEN SURVEYED ON THE GROUND UNDER MY SUPERVISION AND PREPARED ACCORDING TO THE EVIDENCE FOUND AT THE TIME OF SURVEY, AND DATA PROVIDED BY MATADOR PRODUCTION COMPANY. THIS CERTIFICATION IS MADE AND LIMITED TO THOSE PERSONS OR ENTITIES SHOWN ON THE FACE OF THIS PLAT AND IS NON-TRANSFERABLE. THIS SURVEY IS CERTIFIED FOR THIS TRANSACTION ONLY.
 AS OF THE DATE OF SURVEY, ALL ABOVE GROUND APPURTENANCES WITHIN 300' OF THE STAKED LOCATION ARE SHOWN HEREON.

TOPOGRAPHIC
 LOYALTY INNOVATION LEGACY
 481 WINSBROOK ROAD, Ste. 200 • BENBROOK, TEXAS 76126
 TELEPHONE: (817) 744-7512 • FAX (817) 744-7554
 2903 NORTH BIG SPRING • MIDLAND, TEXAS 79705
 TELEPHONE: (432) 682-1653 OR (800) 767-1653 • FAX (432) 682-1743
 WWW.TOPOGRAPHIC.COM

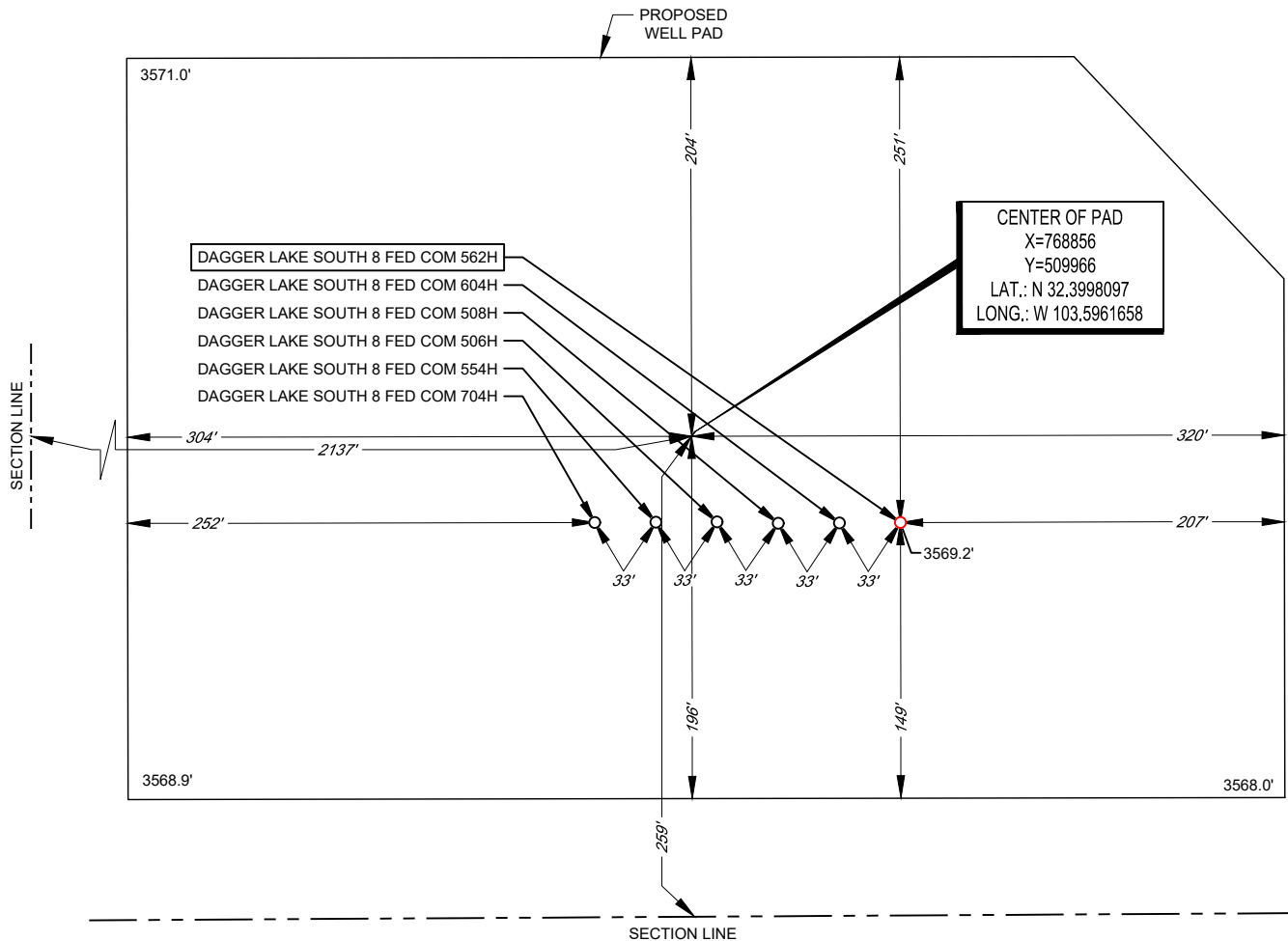


LEGEND

SECTION LINE

SECTION 8, TOWNSHIP 22-S, RANGE 33-E, N.M.P.M.
LEA COUNTY, NEW MEXICO

DETAIL VIEW
SCALE: 1" = 100'



LEASE NAME & WELL NO.: DAGGER LAKE SOUTH 8 FED COM 562H
562H LATITUDE N 32.3996796 562H LONGITUDE W 103.5958019

CENTER OF PAD IS 259' FSL & 2137' FWL



Angel M. Baeza, P.S. No. 25116

May 15, 2024

ALL BEARINGS, DISTANCES, AND COORDINATE VALUES CONTAINED HEREON ARE GRID BASED UPON THE NEW MEXICO COORDINATE SYSTEM OF 1983, EAST ZONE, U.S. SURVEY FEET. ELEVATIONS USED ARE NAVD88, OBTAINED THROUGH AN OPUS SOLUTION.

THIS PROPOSED PAD SITE LOCATION SHOWN HEREON HAS BEEN SURVEYED ON THE GROUND UNDER MY SUPERVISION AND PREPARED ACCORDING TO THE EVIDENCE FOUND AT THE TIME OF SURVEY, AND DATA PROVIDED BY MATADOR PRODUCTION COMPANY. ONLY THE DATA SHOWN ABOVE IS BEING CERTIFIED TO, ALL OTHER INFORMATION WAS INTENTIONALLY OMITTED. THIS PLAT IS ONLY INTENDED TO BE USED FOR A PERMIT AND IS NOT A BOUNDARY SURVEY. THIS CERTIFICATION IS MADE AND LIMITED TO THOSE PERSONS OR ENTITIES SHOWN ON THE FACE OF THIS PLAT AND IS NON-TRANSFERABLE. THIS SURVEY IS CERTIFIED FOR THIS TRANSACTION ONLY.

ORIGINAL DOCUMENT SIZE: 8.5" X 11"



SCALE: 1" = 100'
0' 50' 100'

TOPOGRAPHIC
LOYALTY INNOVATION LEGACY

481 WINSOTT ROAD, Ste. 200 • BENBROOK, TEXAS 76126
TELEPHONE: (817) 744-7512 • FAX (817) 744-7554
2903 NORTH BIG SPRING • MIDLAND, TEXAS 79705
TELEPHONE: (432) 682-1653 OR (800) 767-1653 • FAX (432) 682-1743
WWW.TOPOGRAPHIC.COM

District I
 1625 N. French Dr., Hobbs, NM 88240
 Phone:(575) 393-6161 Fax:(575) 393-0720

District II
 811 S. First St., Artesia, NM 88210
 Phone:(575) 748-1283 Fax:(575) 748-9720

District III
 1000 Rio Brazos Rd., Aztec, NM 87410
 Phone:(505) 334-6178 Fax:(505) 334-6170

District IV
 1220 S. St Francis Dr., Santa Fe, NM 87505
 Phone:(505) 476-3470 Fax:(505) 476-3462

State of New Mexico
Energy, Minerals and Natural Resources
Oil Conservation Division
1220 S. St Francis Dr.
Santa Fe, NM 87505

CONDITIONS

Action 349196

CONDITIONS

Operator: MATADOR PRODUCTION COMPANY One Lincoln Centre Dallas, TX 75240	OGRID: 228937
	Action Number: 349196
	Action Type: [C-103] NOI Change of Plans (C-103A)

CONDITIONS

Created By	Condition	Condition Date
pkautz	REQUIRES NSP.	7/18/2024