

District I  
1625 N. French Dr., Hobbs, NM 88240  
District II  
811 S. First St., Artesia, NM 88210  
District III  
1000 Rio Brazos Rd., Aztec, NM 87410  
District IV  
1220 S. St. Francis Dr., Santa Fe, NM 87505

State of New Mexico  
Energy, Minerals & Natural Resources

Form C-104  
Revised August 1, 2011

Oil Conservation Division  
1220 South St. Francis Dr.  
Santa Fe, NM 87505

Submit one copy to appropriate District Office

☐ AMENDED REPORT

I. REQUEST FOR ALLOWABLE AND AUTHORIZATION TO TRANSPORT

<sup>1</sup> Operator name and Address Hilcorp Energy Company 382 Road 3100 Aztec, NM 87410		<sup>2</sup> OGRID Number 372171	
		<sup>3</sup> Reason for Filing Code/ Effective Date RC	
<sup>4</sup> API Number 30-039-26781	<sup>5</sup> Pool Name Blanco Mesaverde		<sup>6</sup> Pool Code 72319
<sup>7</sup> Property Code 318432	<sup>8</sup> Property Name SAN JUAN 28-7 UNIT		<sup>9</sup> Well Number 218E

II. <sup>10</sup> Surface Location

UI or lot no. P	Section 12	Township 028N	Range 007W	Lot Idn	Feet from the 1030	North/South Line South	Feet from the 1025	East/West Line East	County Rio Arriba
--------------------	---------------	------------------	---------------	---------	-----------------------	---------------------------	-----------------------	------------------------	----------------------

<sup>11</sup> Bottom Hole Location

UL or lot no.	Section	Township	Range	Lot Idn	Feet from the	North/South Line	Feet from the	East/West Line	County Choose an item.
<sup>12</sup> Lse Code F	<sup>13</sup> Producing Method Code F	<sup>14</sup> Gas Connection Date	<sup>15</sup> C-129 Permit Number	<sup>16</sup> C-129 Effective Date	<sup>17</sup> C-129 Expiration Date				

III. Oil and Gas Transporters

<sup>18</sup> Transporter OGRID	<sup>19</sup> Transporter Name and Address	<sup>20</sup> O/G/W
248440	Western Refinery	O
151618	Enterprise	G

IV. Well Completion Data

<sup>21</sup> Spud Date 10/14/2001	<sup>22</sup> Ready Date 7/2/2024	<sup>23</sup> TD 8,110'	<sup>24</sup> PBTD 8,105'	<sup>25</sup> Perforations ~5,244' – 5,926'	<sup>26</sup> DHC, MC DHC-5401
<sup>27</sup> Hole Size	<sup>28</sup> Casing & Tubing Size	<sup>29</sup> Depth Set	<sup>30</sup> Sacks Cement		
12 1/4"	9 5/8" J-55, 36#	331'	150 sx		
8 3/4"	7", J-55, 20#	4,005'	723 sx		
6 1/4"	4 1/2" J-55, 10.5#	8,110'	393 sx		
	2 3/8" J-55, 4.7#	7,972'			

V. Well Test Data

<sup>31</sup> Date New Oil	<sup>32</sup> Gas Delivery Date 7/2/2024	<sup>33</sup> Test Date 7/2/2024	<sup>34</sup> Test Length 4 hrs	<sup>35</sup> Tbg. Pressure 0 psi	<sup>36</sup> Csg. Pressure 124 psi
<sup>37</sup> Choke Size 32/64"	<sup>38</sup> Oil 0 bbl	<sup>39</sup> Water 0 bbl	<sup>40</sup> Gas 105 mcf		<sup>41</sup> Test Method
<sup>42</sup> I hereby certify that the rules of the Oil Conservation Division have been complied with and that the information given above is true and complete to the best of my knowledge and belief. Signature: Cherylene Weston			OIL CONSERVATION DIVISION Approved by: PATRICIA MARTINEZ		
Printed name: Cherylene Weston			Title: PETROLEUM SPECIALIST		
Title: Operations Regulatory Tech Sr.			Approval Date: 7/22/2024		
E-mail Address: cweston@hilcorp.com					
Date: 7/3/2024		Phone: 713-289-2615			

<b>Well Name:</b> SAN JUAN 28-7 UNIT	<b>Well Location:</b> T28N / R7W / SEC 12 / SESE / 36.671311 / -107.519368	<b>County or Parish/State:</b> RIO ARRIBA / NM
<b>Well Number:</b> 218E	<b>Type of Well:</b> CONVENTIONAL GAS WELL	<b>Allottee or Tribe Name:</b>
<b>Lease Number:</b> NMSF079289	<b>Unit or CA Name:</b> SAN JUAN 28-7 UNIT--DK	<b>Unit or CA Number:</b> NMNM78413C
<b>US Well Number:</b> 3003926781	<b>Operator:</b> HILCORP ENERGY COMPANY	

### Subsequent Report

**Sundry ID:** 2798919

**Type of Submission:** Subsequent Report

**Type of Action:** Recompletion

**Date Sundry Submitted:** 07/03/2024

**Time Sundry Submitted:** 10:37

**Date Operation Actually Began:** 05/28/2024

**Actual Procedure:** The subject well was recompleted into the Mesaverde and commingled with existing Dakota per the attached reports.

### SR Attachments

#### Actual Procedure

SJ\_28\_7\_Unit\_218E\_RC\_Sundry\_20240703103600.pdf

**Well Name:** SAN JUAN 28-7 UNIT

**Well Location:** T28N / R7W / SEC 12 /  
SESE / 36.671311 / -107.519368

**County or Parish/State:** RIO  
ARRIBA / NM

**Well Number:** 218E

**Type of Well:** CONVENTIONAL GAS  
WELL

**Allottee or Tribe Name:**

**Lease Number:** NMSF079289

**Unit or CA Name:** SAN JUAN 28-7  
UNIT--DK

**Unit or CA Number:**  
NMNM78413C

**US Well Number:** 3003926781

**Operator:** HILCORP ENERGY  
COMPANY

### Operator

*I certify that the foregoing is true and correct. Title 18 U.S.C. Section 1001 and Title 43 U.S.C. Section 1212, make it a crime for any person knowingly and willfully to make to any department or agency of the United States any false, fictitious or fraudulent statements or representations as to any matter within its jurisdiction. Electronic submission of Sundry Notices through this system satisfies regulations requiring a*

**Operator Electronic Signature:** CHERYLENE WESTON

**Signed on:** JUL 03, 2024 10:36 AM

**Name:** HILCORP ENERGY COMPANY

**Title:** Operations/Regulatory Tech - Sr

**Street Address:** 1111 TRAVIS STREET

**City:** HOUSTON

**State:** TX

**Phone:** (713) 289-2615

**Email address:** CWESTON@HILCORP.COM

### Field

**Representative Name:**

**Street Address:**

**City:**

**State:**

**Zip:**

**Phone:**

**Email address:**

### BLM Point of Contact

**BLM POC Name:** KENNETH G RENNICK

**BLM POC Title:** Petroleum Engineer

**BLM POC Phone:** 5055647742

**BLM POC Email Address:** krennick@blm.gov

**Disposition:** Accepted

**Disposition Date:** 07/22/2024

**Signature:** Kenneth Rennick





## Well Operations Summary L48

Well Name: SAN JUAN 28-7 UNIT #218E

API: 3003926781

Field: DK

State: NEW MEXICO

Sundry #:

Rig/Service: BHE 38

## Operation

MOVE IN, CHANGE OUT TUBING FLOATS. RECEIVED 153- JOINTS (4,868.96') OF 2 3/8" 4.7# J-55 YELLOW BAND TUBING FROM TUBOSCOPE PIPE YARD.

SEND IN 153- JOINTS OF 2 3/8" 4.7# J-55 WELL TUBING THAT FAILED SCAN TESTING TO TUBOSCOPE PIPE YARD FOR CREDIT.

CONTINUE TO TALLY & TRIP IN WITH 2 3/8" YELLOW BAND REPLACEMENT TUBING. TRIPPED TO 7,850'.

TRIPPED OUT WITH TUBING/SCRAPER. STAND BACK TUBING INTO THE DERRICK.

MAKE UP HILCORP 4 1/2" CAST IRON BRIDGE PLUG. KILL CASING PRESSURE WITH 10 BBLS OF BIOCIDAL WATER.

TRIP IN WITH 4 1/2" CIBP TO 7,823' AND SET. APPEARED TO HAVE A GOOD SET. LAYDOWN 1 JOINT OF TUBING.

RIG UP LINE TO THE TUBING. CIRCULATE 4 1/2" CASING ABOVE THE CIBP WITH 116 BBLS OF WATER.

CLOSE PIPE RAMS. TEST THE 4 1/2" CASING 580 PSI. STARTED GAINING PRESSURE DUE TO WATER HEATING. BLEED OFF PRESSURE.

MOVE IN DYNAMIC SERVICES. REPLACED 6-LOCKDOWN PINS ON TUBING HEAD. REBUILD TUBING HANGER.

SHUT IN, SECURED WELL. SECURED RIG AND ALL EQUIPMENT. DEBRIEF CREW. SHUTDOWN JOB OPERATIONS FOR THE EVENING.

CREW TRAVEL TO YARD.

Report Number  
4Report Start Date  
5/31/2024Report End Date  
5/31/2024

## Operation

CREW TRAVEL TO WELLSITE. CREW ON HILCORP YARD AT 0500 HOURS.

PJSA WITH CREW.

CHECK WELL PRESSURES. SITP-0 PSI. SICP-0 PSI. SIICP-0 PSI. SIBHP-0 PSI. OPEN WELL. NO PRESSURE TO BLOWDOWN.

MOVE IN, RIG UP WELLCHECK SERVICES. PRESSURE TEST UNIT. TEST GOOD. CONDUCT MOCK TEST ON 4 1/2" CASING TO 580 PSI. TEST WAS GOOD.

WAIT ON NM OCD REPRESENTATIVE TO ARRIVE.

MOVE IN NMOCD. CONDUCT BRADENHEAD TEST. TEST WAS GOOD. CONDUCT MIT TEST. CIBP AT 7,823'. TEST 4 1/2" CSG & CIBP TO 565 PSI FOR 30 MINUTES. TEST GOOD.

WITNESSED BY ANTHONY BUNNY OF NMOCD. NOTIFY HEC ENGINEERING OF TEST RESULTS.

TRIP OUT OF WELL LAYING DOWN 2 3/8" WELL TUBING. STAND BACK REMAINING TUBING INTO THE DERRICK.

MOVE IN, RIG UP BASIN WIRELINE UNIT. MAKE UP AND RUN IN, SET SELECT 4 1/2" COMPOSITE BRIDGE PLUG AT 5,940' WLM. CORRELATED OFF OF GR/CCL/CBL LOG DATED 11-12-2001.

RIG DOWN, MOVE OUT BASIN WIRELINE UNIT & TOOLS.

RIG UP WELLCHECK TEST UNIT. PRESSURE TEST 4 1/2" CASING TO 2,500 PSI. TEST WAS GOOD. RELEASE PRESSURE.

MAKE UP SELECT OIL TOOLS 4 1/2" RETRIEVABLE BRIDGE PLUG ONTO THE TUBING.

TRIP INTO THE WELL WITH RBP, SET AT 3,400'. LAYDOWN 1 TUBING JOINT. INSTALL 2 3/8" TUBING HANGER AND LAND INTO THE 5K TUBING HEAD. SECURE THE LOCKDOWN PINS. INSTALL TIW VALVE ONTO THE TUBING STRING.

LOAD 4 1/2" X 7" CASING ANNULUS WITH 22 BBLS OF WATER/PACKER FLUID.

RIG UP WELLCHECK TEST UNIT. PRESSURE TEST THE 4 1/2" CASING ABOVE THE RBP AT 3,400' TO 4,000 PSI. TEST WAS GOOD. RELEASE PRESSURE.

RELEASE LOCKDOWN PINS. PULL TUBING HANGER TO THE FLOOR AND REMOVE. LATCH ONTO AND RELEASE THE RBP AT 3,400'.

TRIP OUT OF THE WELL WITH 2 3/8" TUBING. LAY DOWN 4 1/2" RBP.

SHUT IN, SECURED WELL. SECURED RIG AND ALL EQUIPMENT. DEBRIEF CREW. SHUTDOWN JOB OPERATIONS FOR THE WEEKEND.

CREW TRAVEL TO YARD.

Report Number  
5Report Start Date  
6/3/2024Report End Date  
6/3/2024

## Operation

CREW TRAVEL TO WELLSITE. CREW ON HILCORP YARD AT 0500 HOURS.

PJSA WITH CREW.

CHECK WELL PRESSURES. SICP-0 PSI. SIICP-0 PSI. SIBHP-0 PSI. OPEN WELL. NO PRESSURE TO BLOWDOWN.

TRIP IN WITH WELL TUBING FROM THE DERRICK. TRIP OUT LAYING DOWN ONTO TUBING FLOAT.

WILL SEND IN 261- JOINTS OF 2 3/8" 4.7# J-55 YELLOW BAND TUBING FOR STORAGE AT TUBOSCOPE UNTIL NEEDED FOR AFTER FRAC OPERATIONS.

RIG DOWN FLOOR AND TUBING TOOLS. NIPPLE DOWN BOP ASSEMBLY.

MOVE IN BIG RED TOOLS & WELLCHECK SERVICES. NIPPLE UP 5K FRAC STACK ASSEMBLY.

RIG UP WELLCHECK TEST UNIT. PRESSURE TEST THE 5K FRAC STACK ASSEMBLY TO 5,000 PSI. TEST WAS GOOD. RELEASE PRESSURE. RIG DOWN, MOVE OUT BIG RED & WELLCHECK.

RIG DOWN SERVICE UNIT AND ALL EQUIPMENT. PREPARE FOR RIG MOVE OPERATIONS.



Well Operations Summary L48

Well Name: SAN JUAN 28-7 UNIT #218E

API: 3003926781		Field: DK		State: NEW MEXICO	
		Sundry #:		Rig/Service: BHE 38	
Operation					
MOVE SERVICE RIG & DOG HOUSE TO THE SMITH RANCH AREA AND PARK. CREW TRAVEL TO HILCORP YARD.					
MESA VERDE FRAC PREPARATION OPERATIONS COMPLETE.					
Report Number 6		Report Start Date 6/19/2024		Report End Date 6/19/2024	
Operation					
RIG UP BASIN WIRELINE. RIH, PERFORATE STAGE 1 PT LOOKOUT / LOWER MENEFEE @ 5606' - 5926', .33 DIA, 1 SPF (25 HOLES). POOH.					
RIG UP FRAC CREW. PRIME, COOL DOWN, TEST, SAFETY MEETING.					
FRAC STAGE 1: BROKE DOWN WELL WITH WATER AND 500 GAL 15% HCL. FOAM FRAC'D PT LOOKOUT WITH 125,268 LBS 20/40 ARIZONA AND 45,234 GAL SLICKWATER AND 1.70 MILLION SCF N2. 70 QUALITY. AVG RATE = 60 BPM, AVG PSI = 1,995. ISIP WAS 0 PSI.					
RU WIRELINE. RIH, SET BRIDGE PLUG AT 5,590'. PERFORATE STAGE 2 CLIFFHOUSE/UPPER MENEFEE @ 5244' - 5577', .33 DIA, 1 SPF (24 HOLES). POOH.					
FRAC STAGE 2: BDW WITH WATER AND 500 GAL 15% HCL. FOAM FRAC'D CLIFFHOUSE/MENEFEE WITH 125,256 LBS 20/40 ARIZONA AND 44,772 GAL SLICKWATER AND 1.65 MILLION SCF N2. 70 QUALITY. AVG RATE = 60 BPM, AVG PSI = 2,015. ISIP WAS 18 PSI. LOST N2 TRUCK DURING 2#, MADE UP RATE WITH OTHER TRUCKS.					
RIH AND SET CBP AT 5,039'. BLEED OFF, PLUG HOLDING.					
SHUT IN WELL AND RIG DOWN CREWS. TOTAL FRAC LOAD = 2,167 BBLS (INCLUDING 24 BBLS OF ACID). TOTAL SAND = 250,524 LBS. TOTAL N2 = 3.35 MILLION SCF.					
Report Number 7		Report Start Date 6/20/2024		Report End Date 6/20/2024	
Operation					
CREW TRVL T/SAN JUAN 28-7 UNIT #238N.					
PJSM W/AOL F/RIG MOVE.					
LOAD OUT TRUCKS & MOB RIG & EQUIP T/SAN JUAN 28-7 UNIT #218E (22 MILE MOVE).					
MIRU RIG & EQUIP.					
PJSM. SICP-0, SITP-0, SIICP-0, SIBHP-0. BDW 0 MINUTES, NO PRESSURE.					
N/D FRAC STACK & LOAD OUT ON TOOL TRUCK. N/U BOP. R/U WORK FLOOR & TBG HANDLING EQUIP.					
R/U TESTER. PRTS BOP T/250 PSI LOW & 2000 PSI HIGH, OK. CHART & RECORD PRTS. R/D TESTER.					
SINGLE IN WITH SWIVEL. ESTABLISH CIRC. CLEAN OUT PLUG PARTS & SAND TO 4-1/2" CBP #3 @ 5940'. M/U 3-7/8" JUNK MILL.					
TALLY & TIH ON 2-3/8" 4.7# TBG TO 3020'. HIGH WIND MADE RUNNING SLOW.					
R/U 3" LINES. UNLOAD HOLE W/AIR.					
CONT TIH W/3-7/8" JNK MILL. CONTINUING HIGH WINDS TO 4-1/2" CBP @ 5039'. L/D 1 JNT. R/U PWR SWIVEL.					
SWI. SECURE LOC. SDFN.					
CREW TRVL T/YARD.					
Report Number 8		Report Start Date 6/21/2024		Report End Date 6/21/2024	
Operation					
CREW TRVL T/LOC.					
PJSM. SICP-0, SITP-NA, SIICP-0, SIBHP-0. BDW 0 MIN, NO PRESSURE.					
MAKE CONNECTION W/PWR SWIVEL. UNLOAD HOLE W/AIR. ESTABLISH CIRC W/AIR MIST = 10 BPH FW, 1 GPH SOAP & 1 GPH CI.					
DRILL OUT 4-1/2" CBP FROM 5039' TO 5041' (50 MIN). SINGLE IN W/SWIVEL. TAG @ 5550'.					
ESTABLISH CIRC W/AIR MIST. CLEAN OUT (PLUG PARTS & SAND) FROM 5550' TO CIBP @ 5590'.					
DRILL OUT CBP #2 5590' TO 5592' (50 MINUTES).					
SINGLE IN W/SWIVEL. TAG @ 5930' (10' FILL). ESTABLISH CIRC W/12 BPH FW, 1 GPH SOAP & 1 GPH CI. CLEAN OUT (PLUG PARTS & SAND) T/CBP #3 @ 5940'.					
DRILL OUT 4-1/2" CBP 4940' TO 5941' (HALF WAY THROUGH CBP #3. AIR PKG BROKE DOWN).					
TROUBLE SHOOT AIR PKG FAILURE. UNABLE T/REPAIR PROBLEM (SAFE WARNING SHUT DOWN SYSTEM MALFUNCTION).					
R/D PWR SWIVEL & HANG IN DERRICK. TOH W/3-7/8" JNK MILL T/5000' (ABOVE TOP PERFS).					
SWI. SECURE LOC. SDFN.					
CREW TRVL T/YARD.					
Report Number 9		Report Start Date 6/22/2024		Report End Date 6/22/2024	
Operation					
CREW TRVL T/LOC (ROADS IN POOR CONDITION DUE T/MUD).					
PJSM. SICP-250, SITP-NA, SIICP-0, SIBHP-0. BDW 15 MINUTES.					
TIH W/4-7/8" JNK MILL. TAG FILL @ 5933' (8' FILL). R/U PWR SWIVEL.					
WAIT ON REPLACEMENT AIR PKG T/BE DELIVERED. R/U AIR PKG. ESTABLISH CIRC W/1350 CFM, 10 BPH FW, 1 GPH SOAP & 1 GPH FOAM.					
CLEAN OUT FILL (SAND) F/5933' T/5941'.					
FINISH DRILLING 4-1/2" CBP #3 5941' TO 5942' (TOTAL OF 75 MINUTES).					
SINGLE IN W/2 JNTS ON SWIVEL. HANG PWR SWIVEL IN DERRICK. CONT TIH W/3-7/8" MILL ON 2-3/8" 4.7# TBG F/TRAILER. TAG @ 7818' (2' FILL). R/U PWR SWIVEL.					
ESTABLISH CIRC (1.5 HRS) W/12 BPH FW, 2 GPH SOAP & 1 GPH CI. CLEAN OUT 2' FILL (PLUG PARTS) T/7820'. DRILL CIBP (DAKOTA ISOLATION PLUG) F/10 MINUTES. AIR PKG BROKE DOWN.					



Well Operations Summary L48

Well Name: SAN JUAN 28-7 UNIT #218E

API: 3003926781	Field: DK	State: NEW MEXICO
	Sundry #:	Rig/Service: BHE 38

Operation		
TROUBLE SHOOT AIR PKG. CHANGE ALL FUEL FILTERS (LOW FUEL PRESSURE), STARTER LOCKED UP. REMOVE STARTER F/FIRST BROKE DOWN UNIT & INSTALL IT ON REPLACEMENT AIR PKG. START UINT & ESTABLISH CIRC (1 HR).		
CONTINUE <b>DRILL CIBP (DAKOTA ISOLATION PLUG) F/7820' T/7822'</b> (75 MINUTES). PUMP SWEEPS & CIRC CLEAN.		
R/D PWR SWIVEL & HANG IN DERRICK. TOH W/3-7/8" BIT T/5000' (ABOVE PERFS).		
SWI. SECURE LOC. SDFN.		
CREW TRVL T/YARD.		

Report Number 10	Report Start Date 6/23/2024	Report End Date 6/23/2024
---------------------	--------------------------------	------------------------------

Operation		
CREW TRVL T//LOC.		
PJSM. SICP-220, SITP-NA, SIICP-0, SIBHP-0. BDW 15 MINUTES.		
TIH W/3-7/8" JNK MILL F/5000'. TAG @ 7980' = 125' FILL.		
R/U PWR SWIVEL. ESTABLISH CIRC W/1350 CFM, 12 BPH FW, 2 GPH SOAP & 1 GPH CI.		
CLEAN OUT FILL (CIBP PARTS & SAND) F/7980' T/8105'. PUMP SOAP SWEEPS & CIRC CLEAN. R/D PWR SWIVEL & HANG IN DERRICK.		
TOH F/8105' T/DERRICK. L/D 3-7/8" JNK MILL (IN FAIR CONDITION).		
NOTE: KILLED CSG W/15 BBLs FW T/FINISH GETTING OUT OF HOLE W/MILL.		
R/U FLOOR T/DRIFT TBG WHILE TIH. M/U 2-3/8" PLUNGER LIFT BHA. TIH ON 2-3/8" 4.7#, J-55, EU TBG F/DERRICK T/3300'.		
SWI. SECURE LOC. SDFN.		
CREW TRVL T/YARD.		

Report Number 11	Report Start Date 6/24/2024	Report End Date 6/24/2024
---------------------	--------------------------------	------------------------------

Operation		
CREW TRVL T/LOC.		
PJSM. SICP-213, SITP-NA, SIICP-0, SIBHP-0. BDW 15 MINUTES.		
CONT DRIFT & TIH W/2-3/8" PROD BHA F/3000'. M/U TBG HANGER.		
<b>LAND TBG AS FOLLOWS:</b>		
1 - TBG HANGER		
1 - JNT 2-3/8" 4.7#, J-55, EU TBG		
2 - 2-3/8" PUP JNTS (1x2' & 1x10')		
<b>249 - JNTS 2-3/8" 4.7#, J-55, EU TBG</b>		
1 - SN (1.78" ID)		
1 - EXPENDABLE CHECK W/MULE SHOE		
<b>SN @ 7969.59', EOT @ 7971.54'.</b>		
R/D WORK FLOOR & TBG HANDLING EQUIP. N/D BOP. N/U WH & TREE.		
PUMP 5 BBL FW PAD. DROP BALL & PRTS TBG T/500 PSI W/AIR. PUMP OFF CHECK W/950 PSI.		
R/D RIG & EQUIP. MOVE RIG OFF WELLHEAD. MOVE EQUIP TO SIDE OF LOC. SPOT IN IDEAL.		

6/22/2024 - Isolation plugs were inadvertently drilled out prior to DHC approval. The well was shut in and NMOCD notified.

7/2/2024 - DHC was approved and well was put on production as a MV/DK commingle.



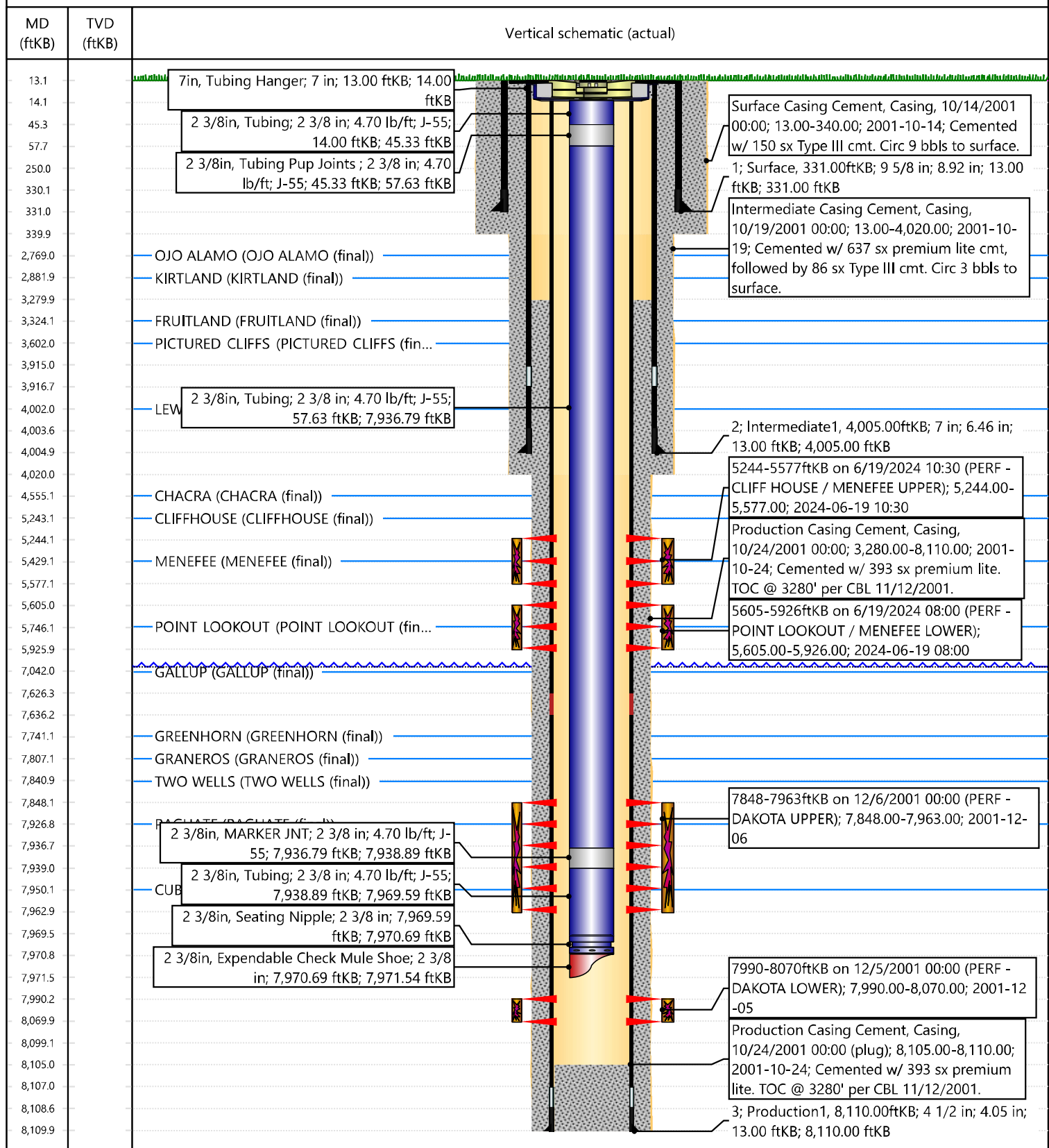


## Current Schematic - Version 3

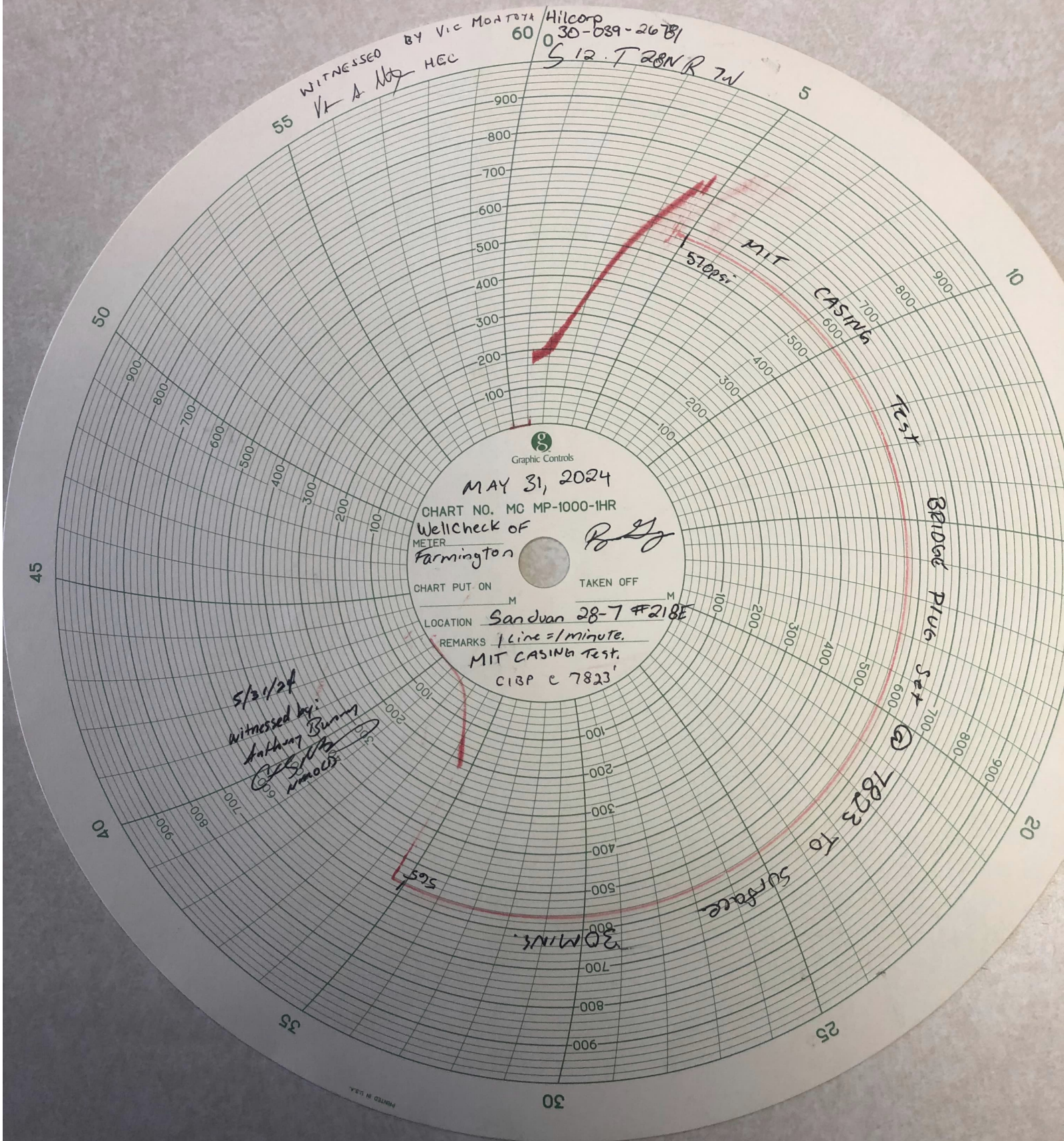
Well Name: SAN JUAN 28-7 UNIT #218E

API / UWI 3003926781	Surface Legal Location 012-028N-007W-P	Field Name DK	Route 1008	State/Province NEW MEXICO	Well Configuration Type Vertical
Ground Elevation (ft) 6,817.00	Original KB/RT Elevation (ft) 6,830.00	Tubing Hanger Elevation (ft) 6,817.00	RKB to GL (ft) 13.00	KB-Casing Flange Distance (ft) 13.00	KB-Tubing Hanger Distance (ft) 13.00

## Original Hole [Vertical]









**Cheryl Weston**

**From:** McClure, Dean, EMNRD  
<Dean.McClure@emnrn.dnm.gov>  
**Sent:** Monday, July 1, 2024 7:11 PM  
**To:** Bennett Vaughn  
**Cc:** Cheryl Weston; Ben Hampton; Matthew Esz; Kuehling, Monica, EMNRD; Lowe, Leonard, EMNRD; Mandi Walker; Wrinkle, Justin, EMNRD  
**Subject:** RE: [EXTERNAL] FW: June Recomplete DHCs

**CAUTION:** External sender. DO NOT open links or attachments from UNKNOWN senders.

Hello Bennett,

Of the 5 downhole commingling projects listed below:

As of 07/01/2024, Hilcorp has been approved to proceed with the following 3:

DHC-5398	Hilcorp Energy Company	372171
DHC-5399	Hilcorp Energy Company	372171
DHC-5400	Hilcorp Energy Company	372171

I have made a request for a decline curve for the following commingling project, which will likely be approved upon Hilcorp providing it; I expect tomorrow:

DHC-5401 Hilcorp Energy Company 372171

I am providing the Director with a recommendation for the following commingling project, and while dependent upon his schedule, I expect we will see a resolution on or around Wednesday of this week:

DHC-5402 Hilcorp Energy Company 372171

**Regarding the period for which Hilcorp had produced the 3 wells out of compliance, please proceed as directed by Monica and/or as directed by other Division staff, provided however that unless directed otherwise, Hilcorp may bring each well back to production once it has received both DHC and C-104 approval.**

Dean McClure  
Petroleum Engineer, Oil Conservation Division  
New Mexico Energy, Minerals and Natural Resources Department  
(505) 469-8211

[pDM2418356511](#) SAN JUAN 28 6 UNIT #159F

**From:** Bennett Vaughn <Bennett.Vaughn@hilcorp.com>  
**Sent:** Monday, July 1, 2024 1:32 PM  
[pDM2418357324](#) SAN JUAN 29 7 UNIT #077E

**To:** McClure, Dean, EMNRD <Dean.McClure@emnrn.dnm.gov>  
[pDM2418358173](#) SAN JUAN 28 7 UNIT #130F  
**Cc:** Cheryl Weston <cweston@hilcorp.com>, Ben Hampton

<bhampton@hilcorp.com>; Matthew Esz <Matthew.Esz@hilcorp.com>  
**Subject:** [EXTERNAL] FW: June Recomplete DHCs

**CAUTION:** This email originated outside of our organization. Exercise caution prior to clicking on links or opening attachments.

Afternoon Dean,

I appreciate you taking my phone call and helping us out. Below is the list of wells that are pending DHCs, along with the email chain with Monica. Just to reiterate, the first 3 wells are the wells that are in violation but have been shut in since. The other 2 wells were completed in June but have not been commingled.

1. San Juan 28-6 Unit 159F (API 3003930251) DHC-5398 approved 7/1/24
2. San Juan 28-7 Unit 218E (API 3003926781) DHC-5401 approved 7/2/24
3. San Juan 29-7 Unit 77E (API 3003923625) DHC-5399 approved 7/1/24
4. San Juan 28-6 Unit 130F (API 3003926930)
5. San Juan 27-4 Unit 58 (API 3003920386)

If you have any other questions, feel free to call me.

Thanks,

**Bennett Vaughn**  
*Ops Engineer*  
San Juan South Asset Team  
**Hilcorp Energy Company**  
o: (346) 237-2195 | c: (281) 409-5066  
e: [Bennett.Vaughn@hilcorp.com](mailto:Bennett.Vaughn@hilcorp.com)

**From:** Bennett Vaughn  
**Sent:** Tuesday, June 25, 2024 4:44 PM  
**To:** 'Kuehling, Monica, EMINRD' <[monica.kuehling@emnrd.nm.gov](mailto:monica.kuehling@emnrd.nm.gov)>  
**Cc:** Ben Hampton <[bhampton@hilcorp.com](mailto:bhampton@hilcorp.com)>; James Osborn <[josborn@hilcorp.com](mailto:josborn@hilcorp.com)>; Cheryl Weston <[cweston@hilcorp.com](mailto:cweston@hilcorp.com)>; Mandi

Walker <[mwalker@hilcorp.com](mailto:mwalker@hilcorp.com)>  
**Subject:** June Recomplete DHCs

Monica,

Thank you for returning my phone call and I appreciate you helping us contact the right person.

To summarize our phone call, we have 3 wells that are in violation of the DHCs. We drilled out isolation plugs this weekend on each of these wells after a miscommunication within our team. Upon realization of the mistake, all wells were immediately shut in and operations ceased, awaiting guidance from NMOCD. The 3 wells in question are listed below:

1. San Juan 28-6 Unit 159F (API 3003930251)
2. San Juan 28-7 Unit 218E (API 3003926781)
3. San Juan 29-7 Unit 77E (API 3003923625)

We have already made changes to our internal process to avoid further incidents of noncompliance.

Thanks,

**Bennett Vaughn**  
*Ops Engineer*  
San Juan South Asset Team  
**Hilcorp Energy Company**  
o: (346) 237-2195 | c: (281) 409-5066  
e: [Bennett.Vaughn@hilcorp.com](mailto:Bennett.Vaughn@hilcorp.com)

The information contained in this email message is confidential and may be legally privileged and is intended only for the use of the individual or entity named above. If you are not an intended recipient or if you have received this message in error, you are hereby notified that any dissemination,

Cheryl Weston

---

From: Rennick, Kenneth G <krennick@blm.gov>  
Sent: Monday, July 22, 2024 11:38 AM  
To: Cheryl Weston  
Subject: Re: [EXTERNAL] San Juan 28-7 Unit 218E (API 3003926781)

**CAUTION:** External sender. DO NOT open links or attachments from UNKNOWN senders.

The completion report for the San Juan 28-7 Unit 218E, WCR ID 92340, has been accepted.

Kenneth (Kenny) Rennick

Petroleum Engineer

Bureau of Land Management  
Farmington Field Office  
6251 College Blvd  
Farmington, NM 87402

Email: [krennick@blm.gov](mailto:krennick@blm.gov)  
Mobile & Text: 505.497.0019

---

From: Rennick, Kenneth G <krennick@blm.gov>  
Sent: Monday, July 22, 2024 9:51 AM  
To: Cheryl Weston <cweston@hilcorp.com>  
Subject: Re: [EXTERNAL] San Juan 28-7 Unit 218E (API 3003926781)

2802112

Kenneth (Kenny) Rennick

Petroleum Engineer

Bureau of Land Management  
Farmington Field Office  
6251 College Blvd  
Farmington, NM 87402

Email: [krennick@blm.gov](mailto:krennick@blm.gov)  
Mobile & Text: 505.497.0019

From: Cheryl Weston <cweston@hilcorp.com>  
Sent: Monday, July 22, 2024 9:50 AM  
To: Rennick, Kenneth G <krennick@blm.gov>  
Subject: RE: [EXTERNAL] San Juan 28-7 Unit 218E (API 3003926781)

WHATS THE SUNDRY ID? THX!

---

From: Rennick, Kenneth G <krennick@blm.gov>  
Sent: Monday, July 22, 2024 10:50 AM  
To: Cheryl Weston <cweston@hilcorp.com>; Kade, Matthew H <mkade@blm.gov>  
Subject: Re: [EXTERNAL] San Juan 28-7 Unit 218E (API 3003926781)

**CAUTION:** External sender. DO NOT open links or attachments from UNKNOWN senders.

It is in the queue.

Kenneth (Kenny) Rennick

Petroleum Engineer

Bureau of Land Management  
Farmington Field Office  
6251 College Blvd  
Farmington, NM 87402

Email: [krennick@blm.gov](mailto:krennick@blm.gov)  
Mobile & Text: 505.497.0019

---

From: Cheryl Weston <[cweston@hilcorp.com](mailto:cweston@hilcorp.com)>  
Sent: Monday, July 22, 2024 9:48 AM  
To: Rennick, Kenneth G <[krennick@blm.gov](mailto:krennick@blm.gov)>; Kade, Matthew H <[mkade@blm.gov](mailto:mkade@blm.gov)>  
Subject: RE: [EXTERNAL] San Juan 28-7 Unit 218E (API 3003926781)

Kenny,

Good morning. I just filed the commingle sundry and didn't receive an email. I looked in the In-Flight Sundries and didn't see it. Do you see it on your end?

Thanks,  
Cheryl

---

From: Rennick, Kenneth G <[krennick@blm.gov](mailto:krennick@blm.gov)>  
Sent: Friday, July 19, 2024 10:01 AM  
To: Cheryl Weston <[cweston@hilcorp.com](mailto:cweston@hilcorp.com)>; Kade, Matthew H <[mkade@blm.gov](mailto:mkade@blm.gov)>  
Subject: Re: [EXTERNAL] San Juan 28-7 Unit 218E (API 3003926781)

**CAUTION:** External sender. DO NOT open links or attachments from UNKNOWN senders.

The commingling notice is not in yet, the production is associated to two PAs. We will need this notice before accepting the 218E reports.

Kenneth (Kenny) Rennick

Petroleum Engineer

Bureau of Land Management  
Farmington Field Office  
6251 College Blvd  
Farmington, NM 87402

Email: [krennick@blm.gov](mailto:krennick@blm.gov)  
Mobile & Text: 505.497.0019

---

From: Cheryl Weston <[cweston@hilcorp.com](mailto:cweston@hilcorp.com)>  
Sent: Friday, July 19, 2024 8:06 AM  
To: Rennick, Kenneth G <[krennick@blm.gov](mailto:krennick@blm.gov)>; Kade, Matthew H <[mkade@blm.gov](mailto:mkade@blm.gov)>  
Subject: [EXTERNAL] San Juan 28-7 Unit 218E (API 3003926781)

**This email has been received from outside of DOI - Use caution before clicking on links, opening attachments, or responding.**

Kenny,

I filed a recomplete sundry and completion report on 7/3/24 and have not received approvals. I checked the queue and they are in received or in reviews. Can I get approvals ASAP? It is due at OCD today.

Thanks,

**Cheryl Weston**

San Juan Operations/Regulatory Tech-Sr.  
1111 Travis Street | Houston, TX 77002  
Ofc: 713.289.2615 | [cweston@hilcorp.com](mailto:cweston@hilcorp.com)



---

The information contained in this email message is confidential and may be legally privileged and is intended only for the use of the individual or entity named above. If you are not an intended recipient or if you have received this message in error, you are hereby notified that any dissemination, distribution, or copy of this email is strictly prohibited. If you have received this email in error, please immediately notify us by return email or telephone if the sender's phone number is listed above, then promptly and permanently delete this message.

While all reasonable care has been taken to avoid the transmission of viruses, it is the responsibility of the recipient to ensure that the onward transmission, opening,



UNITED STATES DEPARTMENT OF THE INTERIOR BUREAU OF LAND MANAGEMENT						FORM APPROVED OMB No. 1004-0137 Expires: July 31, 2018			
WELL COMPLETION OR RECOMPLETION REPORT AND LOG						5. Lease Serial No. <b>NMSF079289</b>			
1a. Type of Well <input type="checkbox"/> Oil Well <input checked="" type="checkbox"/> Gas Well <input type="checkbox"/> Dry <input type="checkbox"/> Other						6. If Indian, Allottee or Tribe Name			
b. Type of Completion: <input type="checkbox"/> New Well <input type="checkbox"/> Work Over <input type="checkbox"/> Deepen <input type="checkbox"/> Plug Back <input type="checkbox"/> Diff. Resvr.,						7. Unit or CA Agreement Name and No.			
Other: <b>RECOMPLETE</b>						8. Lease Name and Well No. <b>San Juan 28-7 Unit 218E</b>			
2. Name of Operator <b>Hilcorp Energy Company</b>						30-039-26781			
3. Address <b>382 Rd 3100, Aztec NM 87410</b>			3a. Phone No. (include area code) <b>(505) 333-1700</b>			10. Field and Pool or Exploratory <b>Blanco Mesaverde</b>			
4. Location of Well (Report location clearly and in accordance with Federal requirements)*  At surface <b>Unit P (SESE), 1030' FSL &amp; 1025' FEL</b>  At top prod. Interval reported below <b>Same as above</b>  At total depth <b>Same as above</b>						11. Sec., T., R., M., on Block and Survey or Area <b>Sec. 12, T28N, R07W</b>			
14. Date Spudded <b>10/14/2001</b>		15. Date T.D. Reached <b>10/24/2001</b>		16. Date Completed <b>7/2/2024</b> <input type="checkbox"/> D & A <input checked="" type="checkbox"/> Ready to Prod.		17. Elevations (DF, RKB, RT, GL)* <b>6,817'</b>			
18. Total Depth: <b>8,110'</b>		19. Plug Back T.D.: <b>8,105'</b>		20. Depth Bridge Plug Set: <b>MD</b> <b>TVD</b>		22. Was well cored? <input checked="" type="checkbox"/> No <input type="checkbox"/> Yes (Submit analysis) Was DST run? <input checked="" type="checkbox"/> No <input type="checkbox"/> Yes (Submit report) Directional Survey? <input checked="" type="checkbox"/> No <input type="checkbox"/> Yes (Submit copy)			
21. Type Electric & Other Mechanical Logs Run (Submit copy of each)									
23. Casing and Liner Record (Report all strings set in well)									
Hole Size	Size/Grade	Wt. (#/ft.)	Top (MD)	Bottom (MD)	Stage Cementer Depth	No. of Sk. & Type of Cement	Slurry Vol. (BBL)	Cement top*	Amount Pulled
12 1/4"	9 5/8" H-40	36#	0	331'	n/a	150 sx			
8 3/4"	7" J-55	20#	0	4,005'	n/a	723 sx			
6 1/4"	4 1/2" J-55	10.5#		8,110'	n/a	393 sx			
24. Tubing Record									
Size	Depth Set (MD)	Packer Depth (MD)	Size	Depth Set (MD)	Packer Depth (MD)	Size	Depth Set (MD)	Packer Depth (MD)	
2 3/8"	7,972'								
25. Producing Intervals									
Formation		Top	Bottom	Perforated Interval		Size	No. Holes	Perf. Status	
A) Cliffhouse/Upper Menefee		5,244'	5,577'	1 SPF		.33"	24	open	
B) Point Lookout/Lower Menefee		5,606'	5,926'	1 SPF		.33"	25	open	
C)									
D)									
TOTAL							49		
27. Acid, Fracture, Treatment, Cement Squeeze, etc.									
Depth Interval		Amount and Type of Material							
5244-5577		BDW w/water & 500 gal 15% HCl. Foam frac w/ 125,256# 20/40 sand, 44,772 gal slickwater & 1.65M SCF N2 70 Q							
5606-5926		BDW w/water & 500 gal 15% HCl. Foam frac w/ 125,268# 20/40 sand, 45,234 gal slickwater & 1.7M SCF N2 70 Q							
-									
28. Production - Interval A									
Date First Produced	Test Date	Hours Tested	Test Production	Oil BBL	Gas MCF	Water BBL	Oil Gravity Corr. API	Gas Gravity	Production Method
7/2/2024	7/2/2024	4	➡	0	105 Mcf	0	n/a	n/a	Flowing
Choke Size	Tbg. Press. Flwg.	Csg. Press.	24 Hr. Rate	Oil BBL	Gas MCF	Water BBL	Gas/Oil Ratio	Well Status	
32/64"	0 psi	124 psi	➡	0	105 Mcf	0	n/a	Producing	
28a. Production - Interval B									
Date First Produced	Test Date	Hours Tested	Test Production	Oil BBL	Gas MCF	Water BBL	Oil Gravity Corr. API	Gas Gravity	Production Method
			➡						
Choke Size	Tbg. Press. Flwg. SI	Csg. Press.	24 Hr. Rate	Oil BBL	Gas MCF	Water BBL	Gas/Oil Ratio	Well Status	
			➡						

\*(See instructions and spaces for additional data on page 2)

28b. Production - Interval C

Date First Produced	Test Date	Hours Tested	Test Production	Oil BBL	Gas MCF	Water BBL	Oil Gravity Corr. API	Gas Gravity	Production Method
			➡						
Choke Size	Tbg. Press. Flwg. SI	Csg. Press.	24 Hr. Rate	Oil BBL	Gas MCF	Water BBL	Gas/Oil Ratio	Well Status	
			➡						

28c. Production - Interval D

Date First Produced	Test Date	Hours Tested	Test Production	Oil BBL	Gas MCF	Water BBL	Oil Gravity Corr. API	Gas Gravity	Production Method
			➡						
Choke Size	Tbg. Press. Flwg. SI	Csg. Press.	24 Hr. Rate	Oil BBL	Gas MCF	Water BBL	Gas/Oil Ratio	Well Status	
			➡						

29. Disposition of Gas (Solid, used for fuel, vented, etc.)

Sold

30. Summary of Porous Zones (Include Aquifers):

Show all important zones of porosity and contents thereof: Cored intervals and all drill-stem test, including depth interval tested, cushion used, time tool open, flowing and shut-in pressures and recoveries.

31. Formation (Log) Markers

Formation	Top	Bottom	Descriptions, Contents, etc.	Name	Top Meas. Depth
Ojo Alamo	2,769'	2882'	White, cr-gr ss	Ojo Alamo	2,769'
Kirtland	2,882'	3324'	Gry sh interbedded w/tight, gry, fine-gr ss.	Kirtland	2,882'
Fruitland	3,324'	3602'	Dk gry-gry carb sh, coal, grn silts, light-med gry, tight, fine gr ss.	Fruitland	3,324'
Pictured Cliffs	3,602'		Bn-Gry, fine grn, tight ss.	Pictured Cliffs	3,602'
Lewis	4,002'		Shale w/ siltstone stingers	Lewis	4,002'
Huerfanito Bentonite		4555'	White, waxy chalky bentonite	Huerfanito Bentonite	
Chacra	4,555'	5243'	Gry fn grn silty, glauconitic sd stone w/ drk gry shale	Chacra	4,555'
Cliff House	5,243'		Light gry, med-fine gr ss, carb sh & coal	Cliff House	5,243'
Menefee	5,429'	5746'	Med-dark gry, fine gr ss, carb sh & coal	Menefee	5,429'
Point Lookout	5,746'		Med-light gry, very fine gr ss w/ frequent sh breaks in lower part of formation	Point Lookout	5,746'
Mancos		7041'	Dark gry carb sh.	Mancos	
Gallup	7,041'	7741'	Lt. gry to brn calc carb micac gluc silts & very fine gry gry ss w/ irreg. interbed sh.	Gallup	7,041'
Greenhorn	7,741'	7807'	Highly calc gry sh w/ thin lmst.	Greenhorn	7,741'
Graneros	7,807'	7841'	Dk gry shale, fossil & carb w/ pyrite incl.	Graneros	7,807'
Dakota	7,841'		Lt to dark gry foss carb sl calc sl sitty ss w/ pyrite incl thin sh bands cly Y shale breaks	Dakota	7,841'
Morrison			Interbed grn, brn & red waxy sh & fine to coard grn ss	Morrison	

32. Additional remarks (include plugging procedure):

This well is currently producing as a MV/DK commingle per DHC-5401. MV PA# NMNM078413A

33. Indicate which items have been attached by placing a check in the appropriate boxes:

☐ Electrical/Mechanical Logs (1 full set req'd.)☐ Geologic Report☐ DST Report☐ Directional Survey

☐ Sundry Notice for plugging and cement verification☐ Core Analysis☐ Other:

34. I hereby certify that the foregoing and attached information is complete and correct as determined from all available records (see attached instructions)\*

Name (please print)Cherylene Weston

TitleOperations/Regulatory Technician

SignatureCherylene Weston

Date7/3/2024

**District I**  
1625 N. French Dr., Hobbs, NM 88240  
Phone:(575) 393-6161 Fax:(575) 393-0720  
**District II**  
811 S. First St., Artesia, NM 88210  
Phone:(575) 748-1283 Fax:(575) 748-9720  
**District III**  
1000 Rio Brazos Rd., Aztec, NM 87410  
Phone:(505) 334-6178 Fax:(505) 334-6170  
**District IV**  
1220 S. St Francis Dr., Santa Fe, NM 87505  
Phone:(505) 476-3470 Fax:(505) 476-3462

**State of New Mexico**  
**Energy, Minerals and Natural Resources**  
**Oil Conservation Division**  
**1220 S. St Francis Dr.**  
**Santa Fe, NM 87505**

ACKNOWLEDGMENTS  
  
Action 366054

ACKNOWLEDGMENTS

Operator: HILCORP ENERGY COMPANY 1111 Travis Street Houston, TX 77002	OGRID: 372171
	Action Number: 366054
	Action Type: [C-104] Completion Packet (C-104C)

ACKNOWLEDGMENTS

<input checked="" type="checkbox"/>	I hereby certify that the required Water Use Report has been, or will be, submitted for this wells completion.
<input checked="" type="checkbox"/>	I hereby certify that the required FracFocus disclosure has been, or will be, submitted for this wells completion.

**District I**  
1625 N. French Dr., Hobbs, NM 88240  
Phone:(575) 393-6161 Fax:(575) 393-0720  
**District II**  
811 S. First St., Artesia, NM 88210  
Phone:(575) 748-1283 Fax:(575) 748-9720  
**District III**  
1000 Rio Brazos Rd., Aztec, NM 87410  
Phone:(505) 334-6178 Fax:(505) 334-6170  
**District IV**  
1220 S. St Francis Dr., Santa Fe, NM 87505  
Phone:(505) 476-3470 Fax:(505) 476-3462

**State of New Mexico**  
**Energy, Minerals and Natural Resources**  
**Oil Conservation Division**  
**1220 S. St Francis Dr.**  
**Santa Fe, NM 87505**

CONDITIONS  
  
Action 366054

CONDITIONS

Operator: HILCORP ENERGY COMPANY 1111 Travis Street Houston, TX 77002	OGRID: 372171
	Action Number: 366054
	Action Type: [C-104] Completion Packet (C-104C)

CONDITIONS

Created By	Condition	Condition Date
plmartinez	None	7/22/2024