

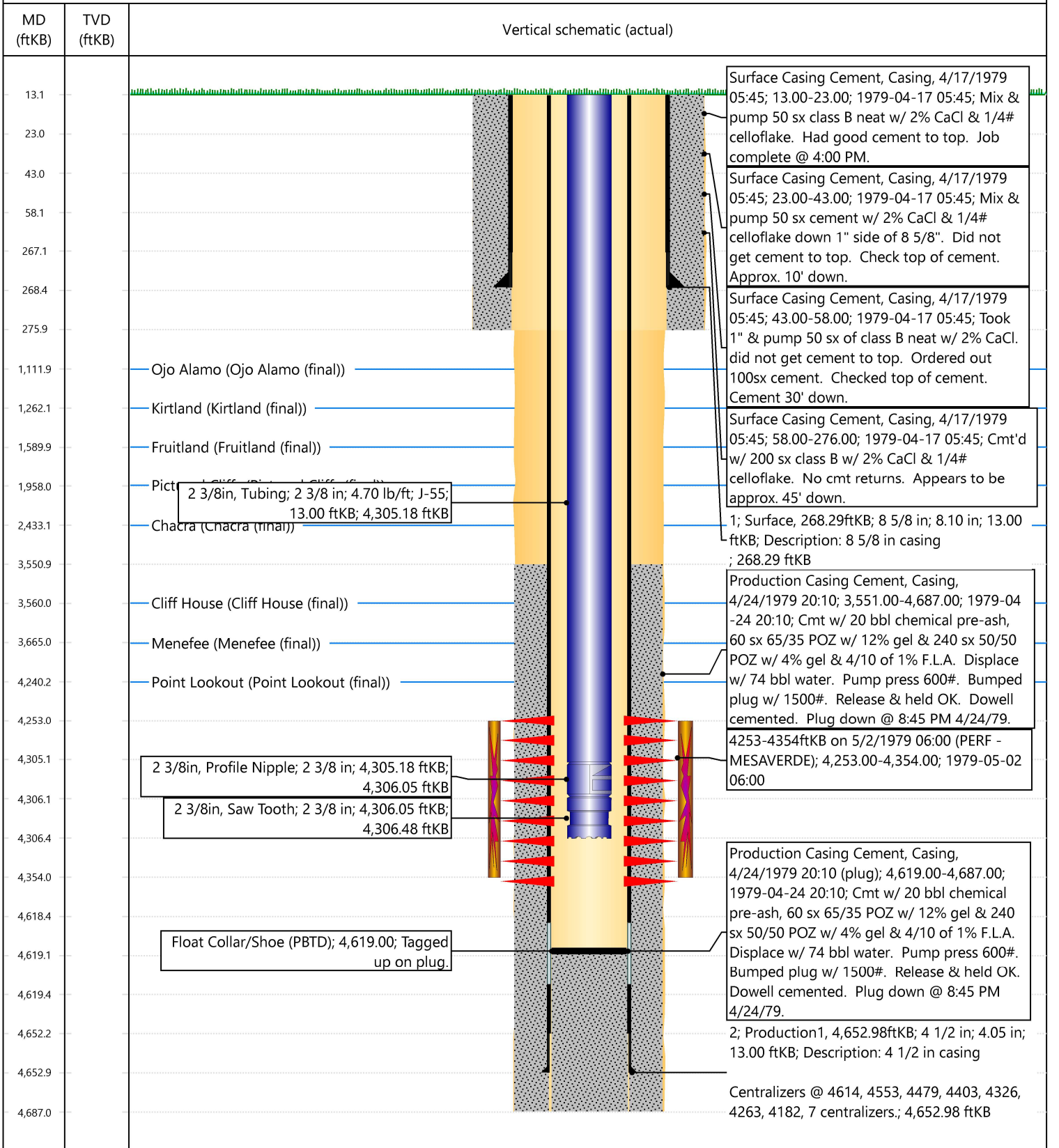


Current Schematic - Version 3

Well Name: LINDA #1A

API / UWI 3004523410	Surface Legal Location D-31-27N-8W	Field Name BLANCO	Route 0904	State/Province NEW MEXICO	Well Configuration Type Vertical
Ground Elevation (ft) 6,033.00	Original KB/RT Elevation (ft) 6,046.00	Tubing Hanger Elevation (ft)	RKB to GL (ft) 13.00	KB-Casing Flange Distance (ft)	KB-Tubing Hanger Distance (ft)

Original Hole [Vertical]



**District I**  
 1625 N. French Dr., Hobbs, NM 88240  
 Phone:(575) 393-6161 Fax:(575) 393-0720

**District II**  
 811 S. First St., Artesia, NM 88210  
 Phone:(575) 748-1283 Fax:(575) 748-9720

**District III**  
 1000 Rio Brazos Rd., Aztec, NM 87410  
 Phone:(505) 334-6178 Fax:(505) 334-6170

**District IV**  
 1220 S. St Francis Dr., Santa Fe, NM 87505  
 Phone:(505) 476-3470 Fax:(505) 476-3462

**State of New Mexico**  
**Energy, Minerals and Natural Resources**  
**Oil Conservation Division**  
**1220 S. St Francis Dr.**  
**Santa Fe, NM 87505**

CONDITIONS

Action 362772

**CONDITIONS**

Operator: HILCORP ENERGY COMPANY 1111 Travis Street Houston, TX 77002	OGRID: 372171
	Action Number: 362772
	Action Type: [UF-WBS] Wellbore Schematic (WELLBORE SCHEMATICS)

**CONDITIONS**

Created By	Condition	Condition Date
mkuehling	tribal - for record only	7/22/2024