

Submit a Copy To Appropriate District:
Office
District I - (575) 393-6161
1625 N. French Dr., Hobbs, NM 88240
District II - (575) 748-1283
811 S. First St., Artesia, NM 88210
District III - (505) 334-6178
1000 Rio Brazos Rd., Aztec, NM 87410
District IV - (505) 476-3460
1220 S. St. Francis Dr., Santa Fe, NM 87505

State of New Mexico
Energy, Minerals and Natural Resources

Form C-103
Revised July 18, 2013

OIL CONSERVATION DIVISION
1220 South St. Francis Dr.
Santa Fe, NM 87505

WELL API NO. 30-015-39454
5. Indicate Type of Lease STATE [X] FEE []
6. State Oil & Gas Lease No.
7. Lease Name or Unit Agreement Name Stirling 6 M
8. Well Number 2
9. OGRID Number 330211
10. Pool name or Wildcat Red Lake; Queen-Graysburg-SA
11. Elevation (Show whether DR, RKB, RT, GR, etc.)

SUNDRY NOTICES AND REPORTS ON WELLS
(DO NOT USE THIS FORM FOR PROPOSALS TO DRILL OR TO DEEPEN OR PLUG BACK TO A DIFFERENT RESERVOIR. USE "APPLICATION FOR PERMIT" (FORM C-101) FOR SUCH PROPOSALS.)
1. Type of Well: Oil Well [X] Gas Well [] Other []
2. Name of Operator Riley Permian Operating Company, LLC
3. Address of Operator 29 E Reno Ave Suite 500 Oklahoma City, OK
4. Well Location Unit Letter M : 660 feet from the S line and 330 feet from the W line
Section 6 Township 18S Range 27E NMPM County Eddy
11. Elevation (Show whether DR, RKB, RT, GR, etc.)

12. Check Appropriate Box to Indicate Nature of Notice, Report or Other Data

NOTICE OF INTENTION TO:
PERFORM REMEDIAL WORK [] PLUG AND ABANDON [X]
TEMPORARILY ABANDON [] CHANGE PLANS []
PULL OR ALTER CASING [] MULTIPLE COMPL []
DOWNHOLE COMMINGLE []
CLOSED-LOOP SYSTEM []
OTHER: []
SUBSEQUENT REPORT OF:
REMEDIAL WORK [] ALTERING CASING []
COMMENCE DRILLING OPNS. [] P AND A []
CASING/CEMENT JOB []
OTHER: []
Notify OCD 24 hrs. prior to any work done. gilbert.cordero@emnrd.nm.gov [X]

13. Describe proposed or completed operations. (Clearly state all pertinent details, and give pertinent dates, including estimated date of starting any proposed work). SEE RULE 19.15.7.14 NMAC. For Multiple Completions: Attach wellbore diagram of proposed completion or recompletion.

*Plugs subject to change based on CBL report.

Spud Date: [] Rig Release Date: []

SEE ATTACHED COA'S MUST BE PLUGGED BY 5/1/25

I hereby certify that the information above is true and complete to the best of my knowledge and belief.

SIGNATURE Deb Fiorda TITLE Regulatory Specialist DATE 7/18/2024

Type or print name E-mail address: PHONE:

For State Use Only

APPROVED BY: [Signature] TITLE Staff Manager DATE 8/2/24
Conditions of Approval (if any):

Riley Permian

STERLING 6M #2 Plugging Procedure

EDDY COUNTY/API 30-015-39454

Notify State 24 hours prior to beginning work

1. **MIRU Rig and CMT equipment. Check anchors if not using basebeam.**
 2. **ND WH, NU BOP (Function Test).**
 3. **POH w/Production**
 4. **RUWL. RIH/Tag CIBP @2490'. Plug #1: DB CMT 2490-2455'.**
 5. **RIH w/HM Plug to 2010'. Test casing 500psi/30min. Run CBL to surface. Bubble test. Load Hole w/9.5# MLF.**
 6. **Plug #2: 25 SXS 2010-1810'. WOC 6hrs & Tag**
 5. **Spot 15 sx cmt 1171' - 1071' - T SA**
 6. **RIH w/TBG. RUWL. Perf @ 1670'. Plug #3: 50 SXS 1670-1470' (8 5/8) WOC & TAG**
 7. **Spot 15 sx cmt 872' - 772' - T Grayburg**
 8. **Perf @ 300' and attempt to circ cmt to surface. LD TBG to 350'. Plug #4: 105 SXS 505-0'**
 9. **RDMO PU, Transport, Equipment. Cut of WH 3' below ground level & install dry hole marker. Cut off anchors.**
- *Plugs subject to change based on CBL report.**



State of New Mexico
Energy, Minerals and Natural Resources Department
Oil Conservation Division
Standard Plugging Conditions

This document provides OCD’s general plugging conditions of approval. It should be noted that the list below may not cover special plugging programs in unique and unusual cases, and OCD expressly reserves the right to impose additional requirements to the extent dictated by project conditions. The OCD also reserves the right to approve deviations from the below conditions if field conditions warrant a change. A C-103F NOI to P&A must be approved prior to plugging operations. Failure to comply with the conditions attached to a plugging approval may result in a violation of 19.15.5.11 NMAC, which may result in enforcement actions, including but not limited to penalties and a requirement that the well be re-plugged as necessary.

1. Notify OCD office at least 24 hours before beginning work and seek prior approval to implementing any changes to the C-103 NOI to PA.
 - North Contact, Monica Kuehling, 505-320-0243, monica.kuehling@emnrd.nm.gov
 - South Contact, Gilbert Cordero, 575-626-0830, gilbert.cordero@emnrd.nm.gov
2. A Cement Bond Log is required to ensure strata isolation of producing formations, protection of water and correlative rights. A CBL must be run or be on file that can be used to properly evaluate the cement behind the casing.

Note: Logs must be submitted to OCD via OCD permitting. A copy of the log may be emailed to OCD inspector for faster review times, but emailing does not relieve the operators obligation to submit through OCD permitting.

3. Once Plugging operations have commenced, the rig must not rig down until the well is fully plugged without OCD approval. If gap in plugging operations exceeds 30 days, the Operator must file a subsequent sundry of work performed and revised NOI for approval on work remaining. At no time shall the rig be removed from location if it will result in waste or contamination of fresh water.
4. Insure all bradenheads have been exposed, identified and valves are operational prior to rig up.
5. Fluids must be placed between all cement plugs mixed at 25 sacks per 100 bbls of water.
 - North, water or mud laden fluids
 - South, mud laden fluids
6. Closed loop system is to be used for entire plugging operation. Upon completion, contents of steel pits are to be hauled to an OCD permitted disposal facility.
7. Class of cement shall be used in accordance with the below table for depth allowed.

Class	TVD Lower Limit (feet)
Class A/B	6,000
Class I/II	6,000
Class C or III	6,000
Class G and H	8,000
Class D	10,000

Class E	14,000
Class F	16,000

8. After cutting the well head any “top off cement jobs” must remain static for 30 minutes. Any gas bubbles or flow during this 30 minutes shall be reported to the OCD for approval of next steps.
9. Trucking companies being used to haul oilfield waste fluids (Commercial or Private) to a disposal facility shall have an approved OCD C-133 permit.
 - A copy of this permit shall be available in each truck used to haul waste products.
 - It is the responsibility of the Operator and Contractor to verify that this permit is in place prior to performing work.
 - Drivers shall be able to produce a copy upon request of an OCD Compliance Officer.
10. Filing a [C-103] Sub. Plugging (C-103P) will serve as notification that the well has been plugged.
11. A [C-103] Sub. Release After P&A (C-103Q) shall be filed no later than a year after plugging and a site inspection by OCD Compliance officer to determine if the location is satisfactorily cleaned, all equipment, electric poles and trash has been removed to meet OCD standards before bonding can be released.
12. Produced water or brine-based fluids **may not** be used during any part of plugging operations without **prior OCD approval**.
13. Cementing;
 - All cement plugs will be neat cement and a minimum of 100’ in length. 50’ of calculated cement excess required for inside casing plugs and 100% calculated cement excess required on outside casing plugs.
 - If cement does not exist between or behind the casing strings at recommended formation depths, the casing perforations will be shot at 50’ below the formation top and the cement retainer shall be set no more than 50’ from the perforations.
 - WOC (Wait on Cement) time will be:
 - 4 hours for accelerated (calcium chloride) cement.
 - 6 hours on regular cement.
 - Operator must tag all cement plugs unless it meets the below condition.
 - The operator has a passing pressure test for the casing annulus and the plug is only an inside plug.
 - If perforations are made operator must tag all plugs using the work string to tag unless given approval to tag with wireline by the correct contact from COA #1 of this document.
 - This includes plugs pumped underneath a cement retainer to ensure retainer seats properly after cement is pumped.
 - Cement can only be bull-headed with specific prior approval.
 - Squeeze pressures are not to exceed the exposed formations frac gradient or the burst pressure of the casing.
14. A cement plug is required to be set from 50’ below to 50’ above (straddling) formation tops, casing shoes, casing stubs, any attempted casing cut offs, anywhere the casing is perforated, DV tools.
 - Perforation/Formation top plug. (When there is less than 100ft between the top perforation to the formation top.) These plugs are required to be started no greater than

50ft from the top perforation. However, the plug should be set below the formation top or as close to the formation top as possible for the maximum isolation between the formations. The plug is required to be a 100ft cement plug plus excess.

- Perforation Plug when a formation top is not included. These plugs are required to be started within 50ft of the top perforation. The plug is required to be a 100ft cement plug plus excess.
- Cement caps on top of bridge plugs or cement retainers for perforation plugs, that are not straddling a formation top, may be set using a bailer with a minimum of 35' of cement in lieu of the 100' plug. The bridge plug or retainer must be set within 50ft of the perforations.
- Perforations are required below the surface casing shoe if cement does not exist behind the casing, a 30-minute minimum wait time will be required immediately after perforating to determine if gas and/or water flows are present. If flow is present, the well will be shut-in for a minimum of one hour and the pressure recorded. If gas is detected contact the OCD office for directions.

15. No more than 3000 feet is allowed between cement plugs in cased hole and no more than 2000 feet is allowed in open hole.

16. Formation Tops to be isolated with cement plugs, but not limited to are:

- Northwest See Figure A
- South (Artesia) See Figure B
- Potash See Figure C
 - In the R-111-P (Or as subsequently revised) Area a solid cement plug must be set across the salt section. Fluid used to mix the cement shall be saturated with the salts that are common to the section penetrated and in suitable proportions, not more than 3% calcium chloride (by weight of cement) will be considered the desired mixture whenever possible, woe 4 hours and tag, this plug will be 50' below the bottom and 50' above the top of the Formation.
- South (Hobbs) See Figure D1 and D2
- Areas not provided above will need to be reviewed with the OCD on a case by case basis.

17. Markers

- Dry hole marker requirements 19.15.25.10.

The operator shall mark the exact location of plugged and abandoned wells with a steel marker not less than four inches in diameter set in cement and extending at least four feet above mean ground level. The marker must include the below information:

 1. Operator name
 2. Lease name and well number
 3. API number
 4. Unit letter
 5. Section, Township and Range
- AGRICULTURE (Below grade markers)

In Agricultural areas a request can be made for a below ground marker. For a below ground marker the operator must file their request on a C-103 notice of intent, and it must include the following;

 - A) Aerial photo showing the agricultural area
 - B) Request from the landowner for the below ground marker.

C) Subsequent plugging report for a well using a below ground marker must have an updated C-102 signed by a certified surveyor for SHL.

Note: A below ground marker is required with all pertinent information mentioned above on a plate, set 3' below ground level, a picture of the plate will be supplied to OCD for record, the exact location of the marker (longitude and latitude by GPS) will be provided to OCD. OCD requires a current survey to verify the location of the below ground marker, however OCD will accept a GPS coordinate that were taken with a GPS that has an accuracy of within 15 feet.

18. If work has not commenced within 1 year of the approval of this procedure, the approval is automatically expired. After 1 year a new [C-103] NOI Plugging (C-103F) must be submitted and approved prior to work.

Figure A

North Formations to be isolated with cement plugs are:

- San Jose
- Nacimiento
- Ojo Alamo
- Kirtland
- Fruitland
- Picture Cliffs
- Chacra (if below the Chacra Line)
- Mesa Verde Group
- Mancos
- Gallup
- Basin Dakota (plugged at the top of the Graneros)
- Deeper formations will be reviewed on a case-by-case basis

Figure B

South (Artesia) Formations to be isolated with cement plugs are:

- Fusselman
- Montoya
- Devonian
- Morrow
- Strawn
- Atoka
- Permo-Penn
- Wolfcamp
- Bone Springs
- Delaware , in certain areas where the Delaware is subdivided into;
 - 1. Bell Canyon
 - 2. Cherry Canyon
 - 3. Brushy Canyon
- Any salt sections
- Abo
- Yeso
- Glorieta
- San Andres
- Greyburg
- Queen
- Yates

Figure C

Potash Area R-111-P

T 18S – R 30E

Sec 10 Unit P. Sec 11 Unit M,N. Sec 13 Unit L,M,N. Sec 14 Unit C -P. Sec 15 Unit A G,H,I,J,K,N,O,P. Sec 22 Unit All except for M. Sec 23, Sec 24 Unit C,D,E,L, Sec 26 Unit A-G, Sec 27 Unit A,B,C

T 19S – R 29E

Sec 11 Unit P. Sec 12 Unit H-P. Sec 13. Sec 14 Unit A,B,F-P. Sec 15 Unit P. Sec 22 Unit A,B,C,F,G,H,I,J K,N,O,P. Sec 23. Sec 24. Sec 25 Unit D. Sec 26 Unit A- F. Sec 27 Unit A,B,C,F,G,H.

T 19S – R 30E

Sec 2 Unit K,L,M,N. Sec 3 Unit I,L,M,N,O,P. Sec 4 Unit C,D,E,F,G,I-P. Sec 5 Unit A,B,C,E-P. Sec 6 Unit I,O,P. Sec 7 – Sec 10. Sec 11 Unit D, G—P. Sec 12 Unit A,B,E-P. Sec 13 Unit A-O. Sec 14-Sec 18. Sec 19 Unit A-L, P. Sec 20 – Sec 23. Sec 24 Unit C,D,E,F,L,M,N. Sec 25 Unit D. Sec 26 Unit A-G, I-P. Sec 27, Sec 28, Sec 29 Unit A,B,C,D,F,G,H,I,J,O,P. Sec 32 Unit A,B,G,H,I,J,N,O,P. Sec 33. Sec 34. Sec 35. Sec 36 Unit D,E,F,I-P.

T 19S – R 31E

Sec 7 Unit C,D,E,F,L. Sec 18 Unit C,D,E,F,G,K,L. Sec 31 Unit M. Sec 34 Unit P. Sec 35 Unit M,N,O. Sec 36 Unit O,P.

T 20S – R 29E

Sec 1 Unit H,I,P. Sec 13 Unit E,L,M,N. Sec 14 Unit B-P. Sec 15 Unit A,H,I,J,N,O,P. Sec 22 Unit A,B,C,F,G,H,I,J,O,P. Sec 23. Sec 24 Unit C,D,E,F,G,J-P. Sec 25 Unit A-O. Sec 26. Sec 27 Unit A,B,G,H,I,J,O,P. Sec 34 Unit A,B,G,H. Sec 35 Unit A-H. Sec 36 Unit B-G.

T 20S – R 30E

Sec 1 – Sec 4. Sec 5 Unit A,B,C,E-P. Sec 6 Unit E,G-P. Sec 7 Unit A-H,I,J,O,P. Sec 8 – 17. Sec 18 Unit A,B,G,H,I,J,O,P. Sec 19 Unit A,B,G,H,I,J,O,P. Sec 20 – 29. Sec 30 Unit A-L,N,O,P. Sec 31 Unit A,B,G,H,I,P. Sec 32 – Sec 36.

T 20S – R 31E

Sec 1 Unit A,B,C,E-P. Sec 2. Sec 3 Unit A,B,G,H,I,J,O,P. Sec 6 Unit D,E,F,J-P. Sec 7. Sec 8 Unit E-P. Sec 9 Unit E,F,J-P. Sec 10 Unit A,B,G-P. Sec 11 – Sec 36.

T 21S – R 29E

Sec 1 – Sec 3. Sec 4 Unit L1 – L16,I,J,K,O,P. Sec 5 Unit L1. Sec 10 Unit A,B,H,P. Sec 11 – Sec 14. Sec 15 Unit A,H,I. Sec 23 Unit A,B. Sec 24 Unit A,B,C,D,F,G,H,I,J,O,P. Sec 25 Unit A,O,P. Sec 35 Unit G,H,I,J,K,N,O,P. Sec 36 A,B,C,F – P.

T 21S – R 30E

Sec 1 – Sec 36

T 21S – R 31E

Sec 1 – Sec 36

T 22S – R 28E

Sec 36 Unit A,H,I,P.

T 22S – R 29E

Sec 1. Sec2. Sec 3 Unit I,J,N,O,P. Sec 9 Unit G – P. Sec 10 – Sec 16. Sec 19 Unit H,I,J. Sec 20 – Sec 28. Sec 29 Unit

A,B,C,D,G,H,I,J,O,P. Sec 30 Unit A. Section 31 Unit C – P. Sec 32 – Sec 36

T 22S – R 30E

Sec 1 – Sec 36

T 22S – R 31E

Sec 1 – Sec 11. Sec 12 Unit B,C,D,E,F,L. Sec 13 Unit E,F,K,L,M,N. Sec 14 – Sec 23. Sec 24 Unit C,D,E,F,K,L,M,N. Sec 25

Unit A,B,C,D. Sec 26 Unit A,BC,D,G,H. Sec 27 – Sec 34.

T 23S – R 28E

Sec 1 Unit A

T 23S – R 29E

Sec 1 – Sec 5. Sec 6 Unit A – I, N,O,P. Sec 7 Unit A,B,C,G,H,I,P. Sec 8 Unit A – L, N,O,P. Sec 9 – Sec 16. Sec 17 Unit

A,B,G,H,I,P. Sec 21 – Sec 23. Sec 24 Unit A – N. Sec 25 Unit D,E,L. Sec 26. Sec 27. Sec 28 Unit A – J, N,O,P. Sec 33

Unit A,B,C. Sec 34 Unit A,B,C,D,F,G,H. Sec 35. Sec 36 Unit B,C,D,E,F,G,K,L.

T 23S – R 30E

Sec 1 – Sec 18. Sec 19 Unit A – I,N,O,P. Sec 20, Sec 21. Sec 22 Unit A – N, P. Sec 23, Sec 24, Sec 25. Sec 26 Unit

A,B,F-P. Sec 27 Unit C,D,E,I,N,O,P. Sec 28 Unit A – H, K,L,M,N. Sec 29 Unit A – J, O,P. Sec 30 Unit A,B. Sec 32 A,B. Sec

33 Unit C,D,H,I,O,P. Sec 34, Sec 35, Sec 36.

T 23S – R 31E

Sec 2 Unit D,E,J,O. Sec 3 – Sec 7. Sec 8 Unit A – G, K – N. Sec 9 Unit A,B,C,D. Sec 10 Unit D,P. Sec 11 Unit G,H,I,J,M,N,O,P. Sec 12 Unit E,L,K,M,N. Sec 13 Unit C,D,E,F,G,J,K,L,M,N,O. Sec 14. Sec 15 Unit A,B,E – P.

Sec 16 Unit

I, K – P. Sec 17 Unit B,C,D,E, I – P. Sec 18 – Sec 23. Sec 24 Unit B – G, K,L,M,N. Sec 25 Unit B – G, J,K,L. Sec 26 – Sec

34. Sec 35 Unit C,D,E.

T 24S – R 29E

Sec 2 Unit A, B, C, D. Sec 3 Unit A

T 24S – R 30E

Sec 1 Unit A – H, J – N. Sec 2, Sec 3. Sec 4 Unit A,B,F – K, M,N,O,P. Sec 9 Unit A – L. Sec 10 Unit A – L, O,P. Sec 11.

Sec 12 Unit D,E,L. Sec 14 Unit B – G. Sec 15 Unit A,B,G,H.

T 24S – R 31E

Sec 3 Unit B – G, J – O. Sec 4. Sec 5 Unit A – L, P. Sec 6 Unit A – L. Sec 9 Unit A – J, O,P. Sec 10 Unit B – G, K – N. Sec

35 Unit E – P. Sec 36 Unit E,K,L,M,N.

T 25S – R 31E

Sec 1 Unit C,D,E,F. Sec 2 Unit A – H.

Figure D1 and D2

South (Hobbs) Formations to be isolated with cement plugs are:

The plugging requirements in the Hobbs Area are based on the well location within specific areas of the Area (See Figure D1). The Formations in the Hobbs Area to be isolated with cement plugs are (see Figure D2)

Figure D1 Map

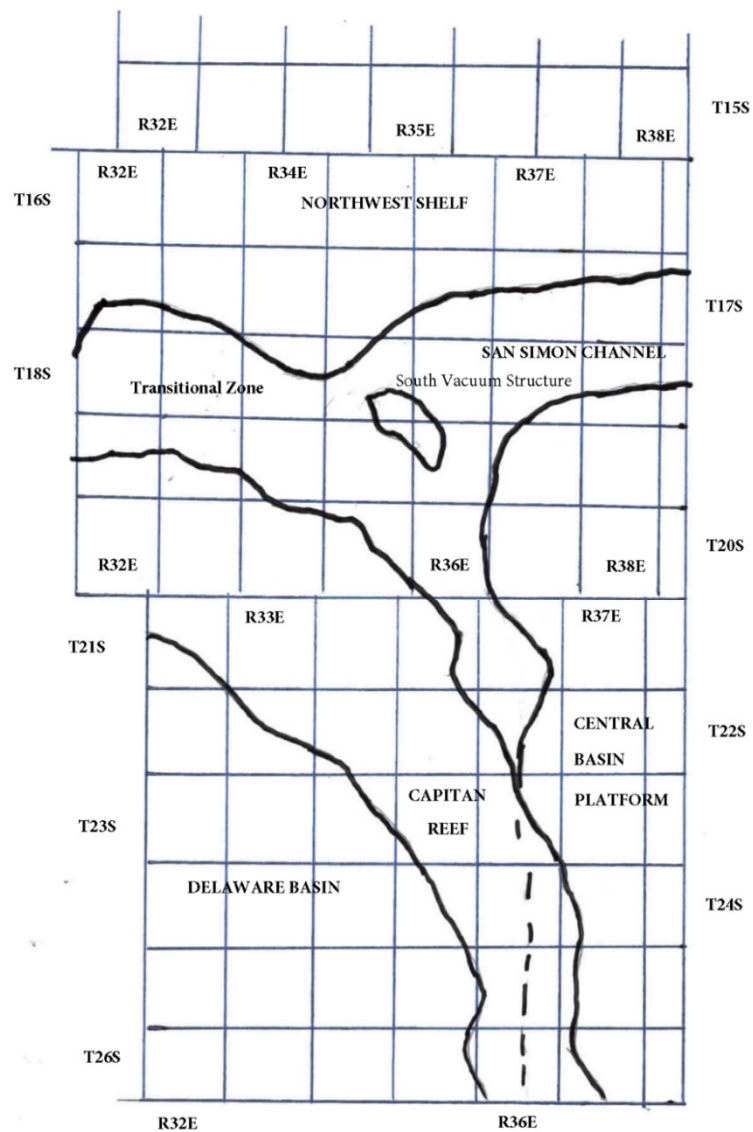


Figure D2 Formation Table

100' Plug to isolate upper and lower fresh water zones (typically 250' to 350')						
Northwest Shelf	Capitan Reef Area	Transition Zone	San Simon Channel	South Vacuum Structure	Delaware Basin	Central Basin Platform
Granit Wash (Detrital basement material and fractured pre-Cambrian basement rock)	Siluro-Devonian	Morrow	Siluro-Devonian	Ellenburger	Siluro-Devonian	Granit Wash (Detrital basement material, fractured pre-Cambrian basement rock and fracture Mafic Volcanic intrusives).
Montoya	Mississippian	Atoka	Morrow	McKee	Morrow	Ellenburger
Fusselman	Morrow	Strawn	Wolfcamp	Siluro-Devonian	Atoka	Connell
Woodford	Atoka	Cisco	Abo Reef	Woodford	Strawn	Waddell
Siluro-Devonian	Strawn	Pennsylvanian	Bone Spring	Mississippian	Pennsylvanian	McKee
Chester	Pennsylvanian	Wolfcamp	Delaware	Barnett Shale	Lower Wolfcamp	Simpson Group
Austin	Wolfcamp	Bone Spring	San Andres	Morrow	Upper Wolfcamp	Montoya
Mississippian	Abo Reef, if present	Delaware	Queen	Atoka	Wolfcamp	Fusselman
Morrow	Abo, if present	San Andres	Yates	Strawn	Third Bone Spring Sand (Top of Wolfbone)	Silurian
Atoka	Queen, if present	Grayburg-San Andres	Base of Salt	Canyon	First Bone Spring Sand (Top of Lower Bone Spring)	Devonian
Lower Pennsylvanian	Bone Spring	Queen	Rustler	Pennsylvanian	Bone Spring	Strawn
Cisco-Canyon	Delaware	Seven Rivers		Blinebry	Brushy Canyon	Pennsylvanian
Pennsylvanian	Base Capitan Reef	Yates		Bone Spring	Delaware (Base of Salt)	Wolfcamp
Bough	Seven Rivers	Base of Salt		San Andres	Rustler	Abo
Wolfcamp	Yates	Rustler		Queen		Abo Reef
Abo	Top Capitan Reef			Base of Salt		Drinkard
Abo Reef, if present	Base of Salt			Rustler		Tubb
Yeso (Township 15 South to Township 17 South)	Rustler					Blinebry
Drinkard or Lower Yeso (Township 15 South to Township 17 South)						Paddock
Tubb (Township 15 South to Township 17 South)						Glorieta
Blinebry (Township 15 South to Township 17 South)						San Andres
Paddock (Township 15 South to Township 17 South)						Grayburg
Glorieta						Grayburg-San Andres
San Andres						Queen
Queen (Township 15 South to Township 17 South)						Seven Rivers
Seven Rivers (Township 15 South to Township 17 South)						Yates
Yates (Township 15 South to Township 17 South)						Base of Salt
Base of Salt						Rustler
Rustler						



REFERENCE DEPTHS	
Ground Elev	3335
Log Elev	3353
KB	18.0

STRING DATA											MD	TVD	Capacity	TOC
CONDUCTOR	20	0.25-in									80	80	0	Surface
Surface	13.375	17.5	48	H-40	12.615	12.459	STC	2370	740		275	275	0.154593185	Surface
Intermediate	8.625	12.25	24	H-40	8.097	7.972	Unkwon	2950	1370		1619	1600.611829	0.063688954	0
PROD	5.5	7.875	15.5	J-55	4.95	4.825	LTC	4810	4040		4212	4186	0.023802701	Surface

COMPLETION DATA	
PACKER FLUID	No Packer
JOB TYPE	Vertical Frac

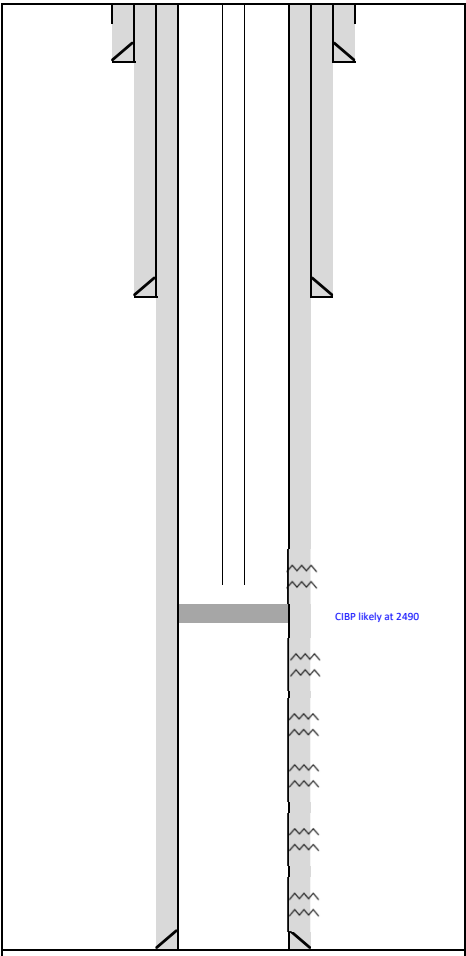
WELLHEAD DATA	
TYPE	
WP	
MFG	
TREE CAP	

Pumping Unit Data	
MFG	Lufkin
API	C456-305-168
Speed	8
SL	168

Full speed 335 bpd - 1.5"
Target 110 bpd
33%

Surface Casing 13.375 -in 48 ppf H-40 STC @275 ftMD 275 ftTVD

Prod. Casing 5.5 -in 15.5 ppf J-55 LTC @4212 ftMD 4186 ftTVD



Estimated Tally

TUBING DETAIL OUT						
Item	QTY	Unit Length	Length	Top	Bottom	Comments
KB	1	18.00	18.00	0.00	18.00	
2-7/8" Subs	0	0.00	0.00	18.00	18.00	
2-7/8" 6.5# L-80 R-2 EUE 8RD	59	32.13	1,895.61	18.00	1,913.61	
TAC	1	3.00	3.00	1,913.61	1,916.61	Target 1900
2-7/8" 6.5# J-55 R-2 EUE 8RD	3	32.47	97.41	1,916.61	2,014.02	Current 2010' based on reports
SN	1	1.10	1.10	2,014.02	2,015.12	Bottom Perf 3290' for Yeso 2405 for SA
Desander/Gas Sep	1	30.00	30.00	2,015.12	2,045.12	
2-7/8" 6.5# J-55 R-2 EUE 8RD	10	32.50	325.00	2,045.12	2,370.12	
Bullplug	1	0.60	0.60	2,370.12	2,370.72	PBD 4165, CIBP at 2490 potentially?

End of tubing anticipated to be stuck in sand.

Tubing 2.875 -in 6.5ppf J-55 8rd EUE @3731 ftMD 3705 ftTVD

All rods OOH

San Andres MD 2060-2405 35 holes

Upper Yeso MD 2553-2680 30 holes

Upper YESO MD 2730-2965 48 holes

Upper Yeso MD 3005-3282' w/1-0.41" spf, total

Middle Yeso MD 3342-3697' w/1-0.41" spf, total

Lower Yeso: MD 3770-3939' w/2-0.40" spf, total

27. ACID, SHOT, FRACTURE, CEMENT, SQUEEZE, ETC.	
DEPTH INTERVAL	AMOUNT AND KIND MATERIAL USED
MD2060'-2405'	1500 gals 15% HCL, fraced w/30,000# 100 mesh & 346,380# 40/70 Ottawa sand in slick water

27. ACID, SHOT, FRACTURE, CEMENT, SQUEEZE, ETC.	
DEPTH INTERVAL	AMOUNT AND KIND MATERIAL USED
MD2553'-2680'	1863 gals 7.5% HCL, fraced w/48,946# 16/30 Brady & 13,326# 16/30 Siber prop sand in X-linked gel
MD2730'-2965'	2000 gals 7.5% HCL, fraced w/79,677# 16/30 Brady & 17,940# 16/30 Siber prop sand in X-linked gel

DEPTH INTERVAL		AMOUNT AND KIND MATERIAL USED	
MD3005'-3282'	2500 gals 7.5% HCL, fraced w/64,820# 16/30 Brady & 16,082# 16/30 Siber prop sand in X-linked gel		
MD3342'-3697'	2500 gals 7.5% HCL, fraced w/82,480# 16/30 Brady & 14,858# 16/30 Siber prop sand in X-linked gel		
MD3770'-3939'	2500 gals 7.5% HCL, fraced w/72,044# 16/30 Brady & 13,199# 16/30 Siber prop sand in X-linked gel		

PBD Reported at 4165

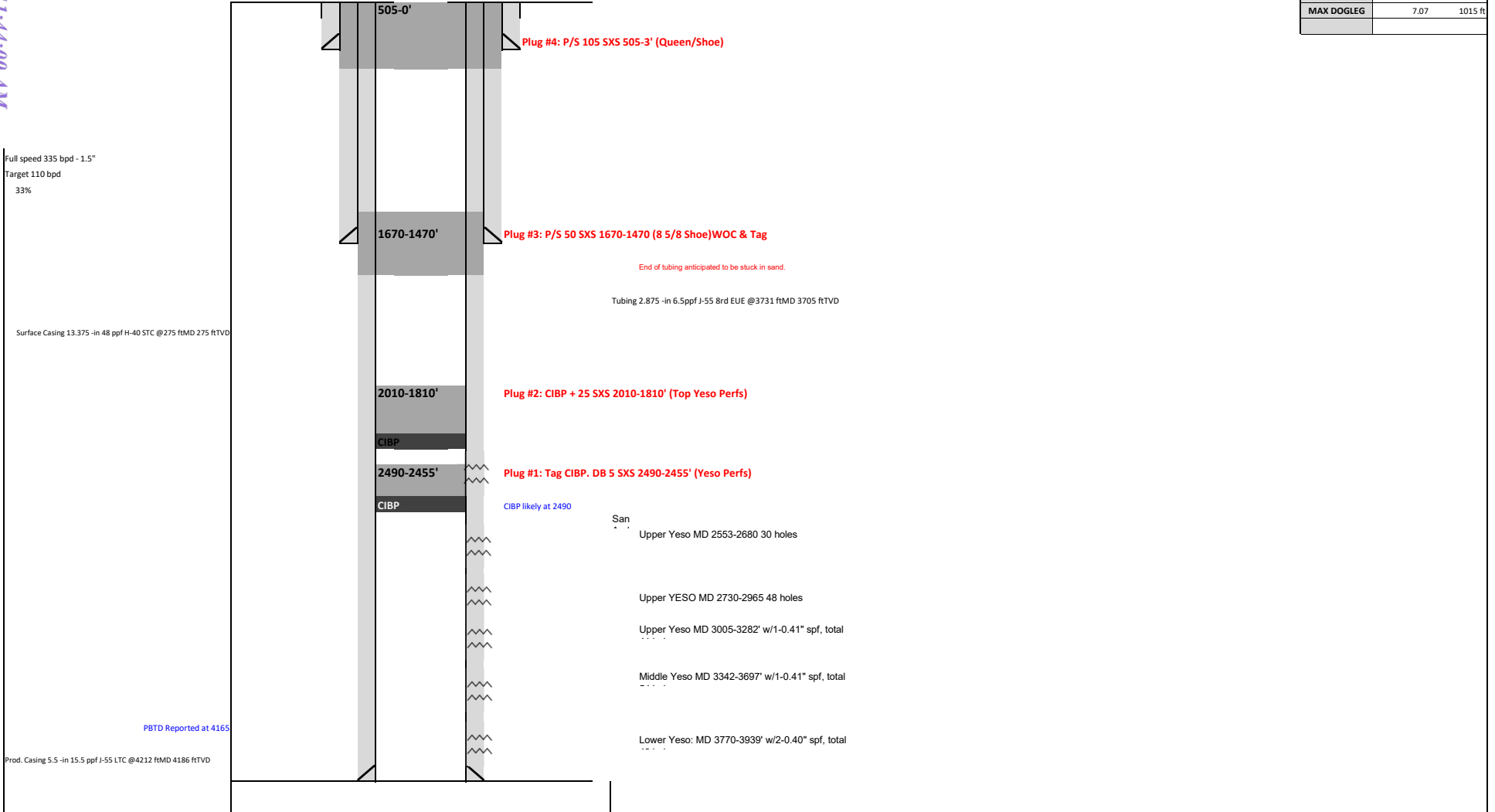
Field Location	Red Lake; Yeso Stirling 6 M	Riley Permian	Surface Location	M-06-185-27E Lot: 7 660 FSL 330 FWL
Well:	#2		AFE	24WE0093
County, State	Eddy New Mexico	Current WBS	PREPARED BY:	Austin Cantwell
API:	30-015-39454	Yeso Formation	Revision DATE:	7/9/2024

Field/Location	Red Lake, Yeso Stirling 6 M	Riley Permian	Surface Location	M-06-185-27E Lot: 7 660 FSL 330 FWL
Well:	#2		AFE	24WE0093
County, State	Eddy New Mexico		PREPARED BY:	Austin Cantwell
API:	30-015-39454		Revision DATE:	7/9/2024



PROPOSED WBD

Directional Data		
KOP		701.00
MAX DEV	13.00	1172 ft
MAX DOGLEG	7.07	1015 ft



District I
 1625 N. French Dr., Hobbs, NM 88240
 Phone:(575) 393-6161 Fax:(575) 393-0720

District II
 811 S. First St., Artesia, NM 88210
 Phone:(575) 748-1283 Fax:(575) 748-9720

District III
 1000 Rio Brazos Rd., Aztec, NM 87410
 Phone:(505) 334-6178 Fax:(505) 334-6170

District IV
 1220 S. St Francis Dr., Santa Fe, NM 87505
 Phone:(505) 476-3470 Fax:(505) 476-3462

State of New Mexico
Energy, Minerals and Natural Resources
Oil Conservation Division
1220 S. St Francis Dr.
Santa Fe, NM 87505

CONDITIONS

Action 365442

CONDITIONS

Operator: RILEY PERMIAN OPERATING COMPANY, LLC 29 E Reno Avenue, Suite 500 Oklahoma City, OK 73104	OGRID: 372290
	Action Number: 365442
	Action Type: [C-103] NOI Plug & Abandon (C-103F)

CONDITIONS

Created By	Condition	Condition Date
gcordero	CBL must be submitted to OCD via OCD Permitting prior to submitting C-103P	8/2/2024