

Submit 1 Copy To Appropriate District

Office

District I – (575) 393-6161

1625 N. French Dr., Hobbs, NM 88240

District II – (575) 748-1283

811 S. First St., Artesia, NM 88210

District III – (505) 334-6178

1000 Rio Brazos Rd., Aztec, NM 87410

District IV – (505) 476-3460

1220 S. St. Francis Dr., Santa Fe, NM

87505

State of New Mexico
Energy, Minerals and Natural ResourcesForm C-103
Revised July 18, 2013OIL CONSERVATION DIVISION
1220 South St. Francis Dr.
Santa Fe, NM 87505

WELL API NO.

30-025-28277

5. Indicate Type of Lease

STATE ☒ FEE ☐

6. State Oil & Gas Lease No.

7. Lease Name or Unit Agreement Name

STATE A A/C 2

8. Well Number #068

9. OGRID Number

329326

10. Pool name or Wildcat

[24130] EUNICE; 7 RVRs-QUEEN, SOUTH

SUNDRY NOTICES AND REPORTS ON WELLS

(DO NOT USE THIS FORM FOR PROPOSALS TO DRILL OR TO DEEPEN OR PLUG BACK TO A DIFFERENT RESERVOIR. USE "APPLICATION FOR PERMIT" (FORM C-101) FOR SUCH PROPOSALS.)

1. Type of Well: Oil Well ☐ Gas Well ☐ Other ☐ INJECTION

2. Name of Operator

FAE II Operating LLC

3. Address of Operator

11757 Katy Freeway, Suite 725, Houston, TX 77079

4. Well Location

Unit Letter E : 2570 feet from the NORTH line and 70 feet from the WEST lineSection 09 Township 22S Range 36E NMPM LEA County

11. Elevation (Show whether DR, RKB, RT, GR, etc.)

3585'

12. Check Appropriate Box to Indicate Nature of Notice, Report or Other Data

NOTICE OF INTENTION TO:

PERFORM REMEDIAL WORK ☐ PLUG AND ABANDON ☐TEMPORARILY ABANDON ☐ CHANGE PLANS ☐PULL OR ALTER CASING ☐ MULTIPLE COMPL ☐DOWNHOLE COMMINGLE ☐CLOSED-LOOP SYSTEM ☐OTHER: Set Isolation Packers & RTI ☒

SUBSEQUENT REPORT OF:

REMEDIAL WORK ☐ ALTERING CASING ☐COMMENCE DRILLING OPNS. ☐ P AND A ☐CASING/CEMENT JOB ☐OTHER: ☐

13. Describe proposed or completed operations. (Clearly state all pertinent details, and give pertinent dates, including estimated date of starting any proposed work). SEE RULE 19.15.7.14 NMAC. For Multiple Completions: Attach wellbore diagram of proposed completion or recompletion.

PROPOSED PROCEDURE: MIRU. POOH w/ tubing and PKR. Run in the hole with an isolation packer to set between the perforation from 3720'-3765' and 3766'-3808'. Set the Injection packer at the same depth of 3715' as previously set. We plan to replace cemented-lined tubing joints. We also want to note the option to replace with IPC joints in the string as we see fit/necessary. RTI.

Order #: R-22349

**Condition of Approval: notify
OCD Hobbs office 24 hours
prior of running MIT Test & Chart**

Spud Date:

EST: 9/17/2024

Rig Release Date:

EST: 9/20/2024

I hereby certify that the information above is true and complete to the best of my knowledge and belief.

SIGNATURE Jessica LaMarro TITLE Geologist DATE 08/22/2024Type or print name Jessica LaMarro E-mail address: jessica@faenergyus.com PHONE: 832-706-0051**For State Use Only**APPROVED BY: Kerry Fortner TITLE Compliance Officer A DATE 9/5/24

Conditions of Approval (see back of form)

Well Name: **STATE A A/C 2 #068** Lease No: _____ Lease Type: _____ State _____
 Township: **22-S** Range: **36-E** Sec: **9-E** Location: **2570' FNL & 70' FWL**
 County: **Lea** State: **NM** API: **30-025-28277** Formation: **EUNICE;SEVEN RIVERS-QUEEN, SOUTH [24130]**

Surface Csg

Size: **8-5/8"**
 Wt.&Thrd: **24# ST&C 8rd**
 Grade: **J-55**
 Set @: **582**
 Sxs cmt: **375 sxs**
 Circ: **?**
 TOC: **Surface**
 Hole Size: **12-1/4"**

KB: **3595'**
 DF: **3594'**
 GL: **3585'**
 Spud Date: **8/8/1983**
 Compl. Date: **9/28/1983**

History - Highlights

1983-9: Grayburn squeezed; produced Queen

1984-9: Convert to injection

1991-12: TA

2022-09: Add perms to QUEEN 3720-3748, acidize all Perfs. RTI.

EOT 3715'
 AS-1X Packer 3715'

Production Csg

Size: **5-1/2"**
 Wt.&Thrd: **14# ST&C**
 Grade: **J-55**
 Set @: **3885**
 Sxs Cmt: **950 sxs**
 Circ: **175 sxs**
 TOC: **Surface**
 Hole Size: **7-7/8"**

YATES (Top @ 3134')

SEVEN RIVERS (Top @ 3318')

QUEEN (Top @ 3595')

3720-3748' w/2SPF

Acidize w/3000 gal 15%NEFEHCL,

3766-3808' w/1SPF

Acidized w/2000 gal 15% NEFEHCL

3823-3847' w/2SPF

Acidized w/1200 gal 15% NEFEHCL

3857-3869' w/2SPF

Acidized w/750 gal 15% NEFEHCL

+ Acidize w/6000 gal 15% NEFEHCL in 2 stages

PBTD 3886'

TD 3910'

Tubulars - Capacities and Performance

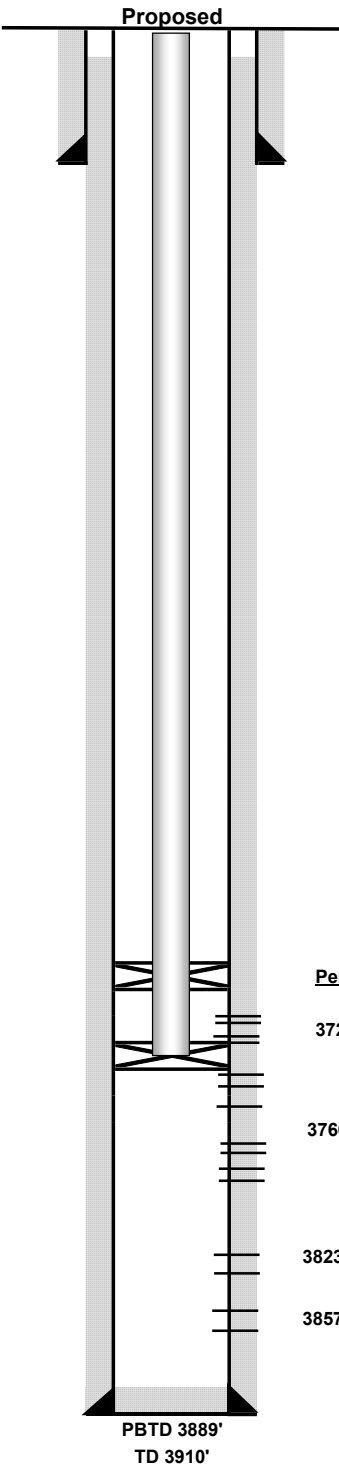
2-3/8" IPC Tubing (120 jts 2-3/8" cmt lined tb, on/off tool, 5-1/2" ASIX nickle plated pkr.) @ 3715

Well Name: **State A A/C 2 #68**
Location: **2570 FNL, 70 FWL; Unit E** Sec: **9** Township: **22S**
County: **Lea** State: **NM** API: **30-025-28277**

Lease Type: **STATE**
Range: **36E**
Formation: **Eunice SR Queen South**

Surface Csg
Size: **8-5/8"**
Wt.&Thrd: **24#, STC**
Grade: _____
Set @: **582'**
Sxs cmt: **375**
Circ: **Yes**
TOC: _____
Hole Size: **12-1/4"**

KB: _____
DF: _____
GL: **3585'**
Spud Date: **8/8/1983**
Compl. Date: **9/15/1983**



History - Highlights

10/1/83:
Perf Queen

3885-3911 Open Hole. Sqz w/ 165 sxs "C"

3857-3869 w/ total 25 holes, 2 JSPF and 4" CSG Gun. Acdz w/ 750 gals 15% NEFE HCL

3823-3847 w/ 49 holes, 2 JSPF and 4" CSG Gun. Acdz w/ 1200 gals 15% NEFE HCL
3766-3808 w/ 43 holes, 1 JSPF and 4" CSG Gun. Acdz w/ 2000

| |
|--|
| |
| |

| | |
|--------------|---------------------|
| Tubing | 2 3/8" IPC |
| Lining | IPC |
| Packer type | Otis Perma-Latch ** |
| Packer Depth | 3715' |

* If we have to replace tubing
it will be with IPC tubing

** If we have to replace it will be with
a Arrow set 1X

Production Csg
Size: **5-1/2"**
Wt.&Thrd: **14#, LTC**
Grade: _____
Set @: **3820'**
Sxs Cmt: **950**
Circ: _____
TOC: _____
Hole Size: **7-7/8"**

Perfs

3720-3765

3766-3808

3823-3847

3857-3869

Proposed Plan:

POOH w/ tubing and PKR. Run in hole with isolation packer to set between the perforations from 3720'-3765' and 3766'-3808'. Set Injection packer at same depth of 3715' as previous. Replace cemented lined tubing joints. Also have the option to replace with IPC joints.

| Tubulars - Capacities and Performance | | | | | | |
|---------------------------------------|--------|-------|---------------|-------------|----------------|--------|
| | bbf/ft | cf/ft | Tensile (lbs) | Burst (psi) | Collapse (psi) | ID(in) |
| | | | | | | |
| | | | | | | |
| | | | | | | |

District I
1625 N. French Dr., Hobbs, NM 88240
Phone:(575) 393-6161 Fax:(575) 393-0720

District II
811 S. First St., Artesia, NM 88210
Phone:(575) 748-1283 Fax:(575) 748-9720

District III
1000 Rio Brazos Rd., Aztec, NM 87410
Phone:(505) 334-6178 Fax:(505) 334-6170

District IV
1220 S. St Francis Dr., Santa Fe, NM 87505
Phone:(505) 476-3470 Fax:(505) 476-3462

State of New Mexico
Energy, Minerals and Natural Resources
Oil Conservation Division
1220 S. St Francis Dr.
Santa Fe, NM 87505

CONDITIONS

Action 376625

CONDITIONS

| | |
|---|---|
| Operator: FAE II Operating LLC 11757 Katy Freeway, Suite 725 Houston, TX 77079 | OGRID: 329326 |
| | Action Number: 376625 |
| | Action Type: [C-103] NOI Workover (C-103G) |

CONDITIONS

| Created By | Condition | Condition Date |
|------------|------------------|----------------|
| kfortner | Run PWOT MIT/BHT | 9/5/2024 |