

Well Name: YOUNG DEEP UNIT	Well Location: T18S / R32E / SEC 9 / NENE / 32.7690863 / -103.7670894	County or Parish/State: LEA / NM
Well Number: 36	Type of Well: OIL WELL	Allottee or Tribe Name:
Lease Number: NMLC064009D	Unit or CA Name: YOUNG DEEP UNIT - BONE SP	Unit or CA Number: NMNM71067B
US Well Number: 3002533642	Operator: MATADOR PRODUCTION COMPANY	

Accepted for record only BLM approval required NMOCD 9/23/24

Subsequent Report

Sundry ID: 2811457

Type of Submission: Subsequent Report	Type of Action: Plug and Abandonment
Date Sundry Submitted: 09/11/2024	Time Sundry Submitted: 03:22
Date Operation Actually Began: 08/05/2024	

**Actual Procedure:** 8/5/24: MIRU WOR; POOH w/ rods. 8/6/24: NU & test BOPs; POOH w/ tubing. 8/7/24: RIH & set CIBP @ 8,775' WLM; Pressure test casing to 500 psi for 30 minutes, good test. 8/8/24: RIH & tag CIBP @ 8,775' WLM; Run CBL and find TOC near surface; TIH & tag CIBP @ 8,776' TM; Circulate & displace wellbore full of MLF. 8/9/24: Spot 25 sks of Class H cement on CIBP; WOC for 6 hrs; TIH & tag TOC @ 8,601' TM. 8/12/24: PU & spot a 140 sk Class C cement balanced plug @ 6,250' TM; PU & spot a 75 sk Class C cement balanced plug @ 3,185' TM. 8/13/24: TIH & tag TOC @ 2,449' TM; PU & spot a 25 sk Class C cement balanced plug @ 1,500' TM; WOC for 4 hrs; RIH & tag TOC @ 1,281' WLM; PU & perf @ 475' TM; Attempt to establish injection, no success; TIH to 525' TM & spot cement to surface (55 sks Class C cement total). 8/14/24: Cut & removed wellhead; Verified cement to surface in Production & Surface casing strings; Tag TOC @ 51' in Intermediate casing string; TIH & spot 7 sks Class C cement to surface; Cement to surface in all casing strings; Install Below Ground Level Dryhole marker; Backfill cellar; RDMO WOR. Spud Date: 11/1/1996 Plug Date: RDMO; 8/14/2024 Inspector: Brian Ly

SR Attachments

- Actual Procedure
- Photos\_20240911152155.pdf
  - As\_PLugged\_20240911152141.pdf
  - Young\_Deep\_Unit\_\_036\_As\_Plugged\_WBD\_20240911152131.pdf

Well Name: YOUNG DEEP UNIT	Well Location: T18S / R32E / SEC 9 / NENE / 32.7690863 / -103.7670894	County or Parish/State: LEA / NM
Well Number: 36	Type of Well: OIL WELL	Allottee or Tribe Name:
Lease Number: NMLC064009D	Unit or CA Name: YOUNG DEEP UNIT - BONE SP	Unit or CA Number: NMNM71067B
US Well Number: 3002533642	Operator: MATADOR PRODUCTION COMPANY	

Operator

I certify that the foregoing is true and correct. Title 18 U.S.C. Section 1001 and Title 43 U.S.C. Section 1212, make it a crime for any person knowingly and willfully to make to any department or agency of the United States any false, fictitious or fraudulent statements or representations as to any matter within its jurisdiction. Electronic submission of Sundry Notices through this system satisfies regulations requiring a

Operator Electronic Signature: BRETT JENNINGS

Signed on: SEP 11, 2024 03:22 PM

Name: MATADOR PRODUCTION COMPANY

Title: Regulatory Analyst

Street Address: 5400 LBJ FREEWAY, STE 1500

City: DALLASState: TX

Phone: (972) 629-2160

Email address: BRETT.JENNINGS@MATADORRESOURCES.COM

Field

Representative Name:

Street Address:

City:State:Zip:

Phone:

Email address:

BLM Point of Contact

BLM POC Name: JAMES A AMOS

BLM POC Title: Acting Assistant Field Manager

BLM POC Phone: 5752345927

BLM POC Email Address: jamos@blm.gov

Disposition: Accepted

Disposition Date: 09/16/2024

Signature: James A Amos

8/5/24: MIRU WOR; POOH w/ rods.

8/6/24: NU & test BOPs; POOH w/ tubing.

8/7/24: RIH & set CIBP @ 8,775' WLM; Pressure test casing to 500 psi for 30 minutes, good test.

8/8/24: RIH & tag CIBP @ 8,775' WLM; Run CBL and find TOC near surface; TIH & tag CIBP @ 8,776' TM; Circulate & displace wellbore full of MLF.

8/9/24: Spot 25 sks of Class H cement on CIBP; WOC for 6 hrs; TIH & tag TOC @ 8,601' TM.

8/12/24: PU & spot a 140 sk Class C cement balanced plug @ 6,250' TM; PU & spot a 75 sk Class C cement balanced plug @ 3,185' TM.

8/13/24: TIH & tag TOC @ 2,449' TM; PU & spot a 25 sk Class C cement balanced plug @ 1,500' TM; WOC for 4 hrs; RIH & tag TOC @ 1,281' WLM; PU & perf @ 475' TM; Attempt to establish injection, no success; TIH to 525' TM & spot cement to surface (55 sks Class C cement total).

8/14/24: Cut & removed wellhead; Verified cement to surface in Production & Surface casing strings; Tag TOC @ 51' in Intermediate casing string; TIH & spot 7 sks Class C cement to surface; Cement to surface in all casing strings; Install Below Ground Level Dryhole marker; Backfill cellar; RDMO WOR.

Spud Date: 11/1/1996

Plug Date: RDMO; 8/14/2024

Inspector: Brian Ly

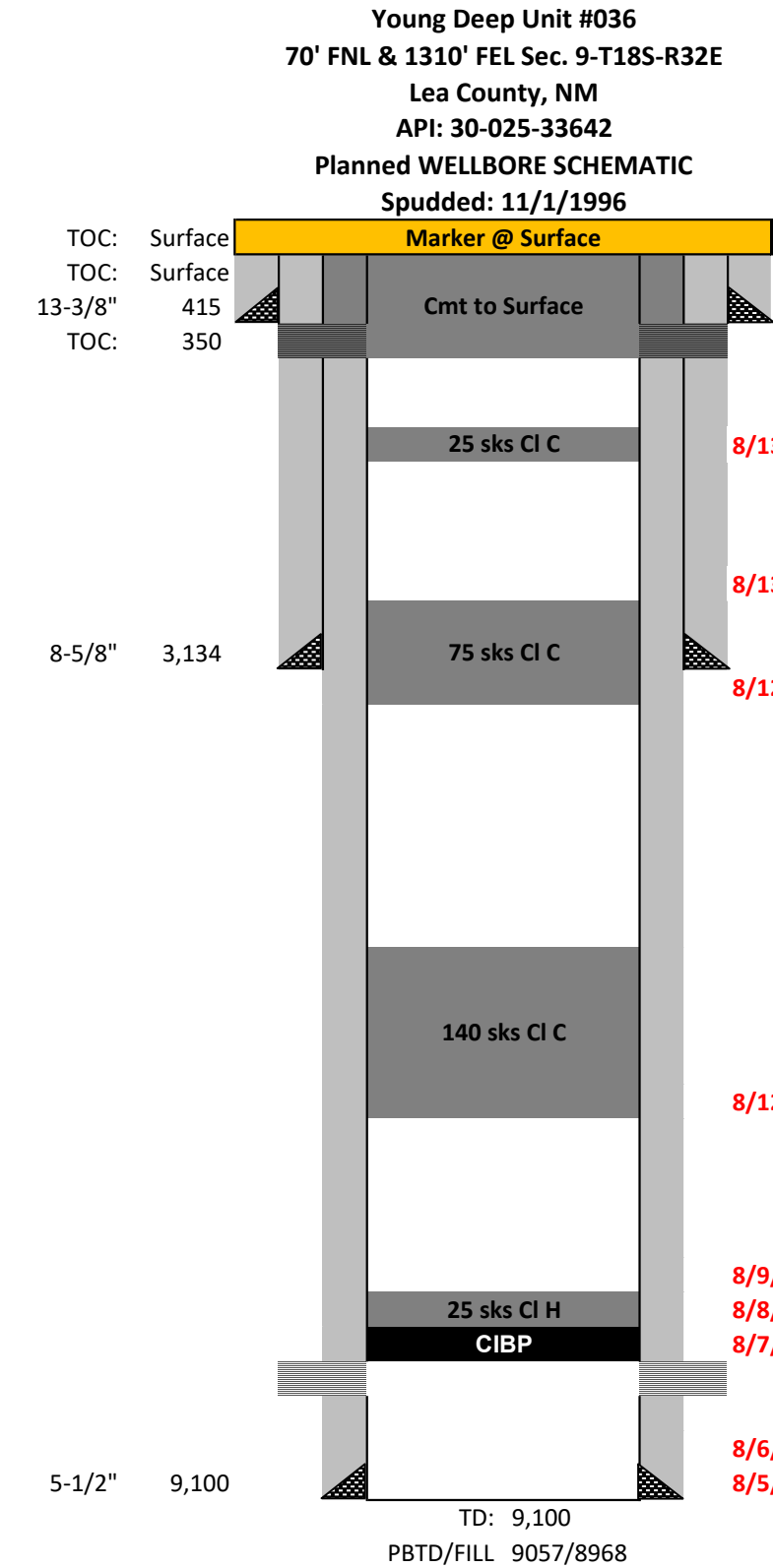


MATADOR PRODUCTION COMPANY  
YOUNG DEEP UNIT #36 PTAB-14-24  
30-025-33642 LEACD  
70FNL1310FEL NMO640090  
SEC 9 T18S R32E  
32.460836-103.460157









8/14/24: Cut & removed wellhead; Verified cement to surface in Production & Surface casing strings; Tag TOC @ 51' in Intermediate casing string; TIH & spot 7 sks Class C cement to surface.  
Cement to surface in all casing strings; Install Below Ground Level Dryhole marker; Backfill cellar; RDMO WOR.  
8/13/24: PU & perf @ 475' TM; Attempt to establish injection, no success; TIH to 525' TM & spot cement to surface (55 sks Class C cement total).

8/13/24: PU & spot a 25 sk Class C cement balanced plug @ 1,500' TM; WOC for 4 hrs; RIH & tag TOC @ 1,281' WLM.

8/13/24: TIH & tag TOC @ 2,449' TM.

8/12/24: PU & spot a 75 sk Class C cement balanced plug @ 3,185' TM.

8/12/24: PU & spot a 140 sk Class C cement balanced plug @ 6,250' TM.

8/9/24: Spot 25 sks of Class H cement on CIBP; WOC for 6 hrs; TIH & tag TOC @ 8,601' TM.  
8/8/24: RIH & tag CIBP @ 8,775' WLM; Run CBL and find TOC near surface; TIH & tag CIBP @ 8,776' TM; Circulate & displace wellbore full of MLF.  
8/7/24: RIH & set CIBP @ 8,775' WLM; Pressure test casing to 500 psi for 30 minutes, good test.

11/22/1996 2nd Bone Springs Sand  
(8,832'-8,877')

8/6/24: NU & test BOPs; POOH w/ tubing.  
8/5/24: MIRU WOR; POOH w/ rods.

	Casing Information		Type	Weight (lb/ft)	Joints	Depth Set
	Hole Size	Casing Size				
Surface	17-1/2"	13-3/8"	H-40	48#	8	415
Intermediate	12-1/4"	8-5/8"	J-55	32#	70	3,134
Production	7-7/8"	5-1/2"	J-55	17#	204	9,100
DV Tool						

Cementing Record		TOC	Date Run	Geologic Markers	
Surface	Intermediate				
Surface	425 sks CL C	Surface	11/1/1996	Yates	2,628
Intermediate	1200 sks CL C	Surface	11/5/1996	7 Rivers	3,103
Production	1000 sks CL H x 500 sks CL H	350	11/17/1996	Queen	3,796
				Penrose	4,030
				Grayburg	4,303
				San Andres	4,811
				Delaware	5,060
				Bone Spring	6,180
				1st Sand	7,810
				B-Zone	8,019
				2nd Sand	8,500

Perforation Information		
Date	Formation	Depth
11/22/1996	2nd Bone Springs Sand	(8,832'-8,877')

**District I**  
1625 N. French Dr., Hobbs, NM 88240  
Phone:(575) 393-6161 Fax:(575) 393-0720  
**District II**  
811 S. First St., Artesia, NM 88210  
Phone:(575) 748-1283 Fax:(575) 748-9720  
**District III**  
1000 Rio Brazos Rd., Aztec, NM 87410  
Phone:(505) 334-6178 Fax:(505) 334-6170  
**District IV**  
1220 S. St Francis Dr., Santa Fe, NM 87505  
Phone:(505) 476-3470 Fax:(505) 476-3462

**State of New Mexico**  
**Energy, Minerals and Natural Resources**  
**Oil Conservation Division**  
**1220 S. St Francis Dr.**  
**Santa Fe, NM 87505**

CONDITIONS  
  
Action 384006

CONDITIONS

Operator: MATADOR PRODUCTION COMPANY One Lincoln Centre Dallas, TX 75240	OGRID: 228937
	Action Number: 384006
	Action Type: [C-103] Sub. Plugging (C-103P)

CONDITIONS

Created By	Condition	Condition Date
kfortner	Accepted for record only BLM approval required NMOCD 9/23/24	9/23/2024