

Submit 1 Copy To Appropriate District
Office
District I – (575) 393-6161
1625 N. French Dr., Hobbs, NM 88240
District II – (575) 748-1283
811 S. First St., Artesia, NM 88210
District III – (505) 334-6178
1000 Rio Brazos Rd., Aztec, NM 87410
District IV – (505) 476-3460
1220 S. St. Francis Dr., Santa Fe, NM
87505

State of New Mexico
Energy, Minerals and Natural Resources

OIL CONSERVATION DIVISION
1220 South St. Francis Dr.
Santa Fe, NM 87505

Form C-103
Revised July 18, 2013

WELL API NO. 30-005-20004	
5. Indicate Type of Lease STATE <input checked="" type="checkbox"/> FEE <input type="checkbox"/>	
6. State Oil & Gas Lease No.	
7. Lease Name or Unit Agreement Name Cato San Andres Unit	
8. Well Number 44	
9. OGRID Number 248802	
10. Pool name or Wildcat Cato; San Andres	
SUNDRY NOTICES AND REPORTS ON WELLS (DO NOT USE THIS FORM FOR PROPOSALS TO DRILL OR TO DEEPEN OR PLUG BACK TO A DIFFERENT RESERVOIR. USE "APPLICATION FOR PERMIT" (FORM C-101) FOR SUCH PROPOSALS.) 1. Type of Well: Oil Well <input checked="" type="checkbox"/> Gas Well <input type="checkbox"/> Other <input type="checkbox"/> 2. Name of Operator Cano Petro of New Mexico, Inc. 3. Address of Operator 801 Cherry Street Suite 3200 Unit 25 Fort Worth, TX 76102 4. Well Location Unit Letter <u>I</u> 1980 feet from the <u>S</u> line and <u>660</u> feet from the <u>E</u> line Section <u>9</u> Township <u>08S</u> Range <u>30E</u> NMPM County Chaves 11. Elevation (Show whether DR, RKB, RT, GR, etc.) 4068	

12. Check Appropriate Box to Indicate Nature of Notice, Report or Other Data

NOTICE OF INTENTION TO:

PERFORM REMEDIAL WORK ☐ PLUG AND ABANDON ☐
 TEMPORARILY ABANDON ☐ CHANGE PLANS ☐
 PULL OR ALTER CASING ☐ MULTIPLE COMPL ☐
 DOWNHOLE COMMINGLE ☐
 CLOSED-LOOP SYSTEM ☐
 OTHER: ☐

SUBSEQUENT REPORT OF:

REMEDIAL WORK ☐ ALTERING CASING ☐
 COMMENCE DRILLING OPNS. ☐ P AND A ☒
 CASING/CEMENT JOB ☐
 OTHER: ☐

13. Describe proposed or completed operations. (Clearly state all pertinent details, and give pertinent dates, including estimated date of starting any proposed work). SEE RULE 19.15.7.14 NMAC. For Multiple Completions: Attach wellbore diagram of proposed completion or recompletion.

Please see attached report.

Spud Date:

Rig Release Date:

I hereby certify that the information above is true and complete to the best of my knowledge and belief.

SIGNATURE: Ethan Wakefield

TITLE: Authorized Representative

DATE 9/12/24

Type or print name: Ethan Wakefield E-mail address: e.wakefield@dwsrigs.com

PHONE: 405-343-7736

For State Use Only

APPROVED BY: _____ TITLE _____ DATE _____

Cano Petro Inc./NMOCD OWP

Plug And Abandonment End Of Well Report

Cato San Andres Unit #44

1980' FSL & 660' FEL, Section 9, T8S, R30E

Chaves County, NM / API 30-005-20004

Work Summary:

- 9/22/21** Made NMOCD P&A operations notifications at 9:00 AM MST.
- 9/23/21** MOL and R/U P&A rig. Prepped location with backhoe. Checked well pressures: Tubing: 0 psi, Casing: 0 psi, Bradenhead: 0 psi. Bled down well. N/D wellhead, N/U BOP and function tested. P/U 4 ½" casing scraper and work string and tallied in the wellbore to a depth of 1,450'. At 1,450' casing scraper tagged up and could not be worked past that depth. TOOH with tubing. P/U muleshoe sub and TIH to 1,450'. At 1,450' muleshoe sub also tagged up. Muleshoe sub was washed down 3' where BHA became stuck for a short period of time before releasing. Once unstuck tubing was found to be plugged. TOOH with work string and unplugged tubing. TIH and tagged up at 1,440' where tubing plugged off again. TOOH and unplugged tubing. TIH and washed down to 1,450'. TOOH. Shut-in well for the day.
- 9/24/21** Checked well pressures: Tubing: 0 psi, Casing: 0 psi, Bradenhead: 0 psi. Bled down well. P/U cementing sub. TIH to 1,450'. R/U cementing services. Pumped plug #1 from 1,450'-3,256' to cover the San Andres perforations and formation top. Plug #1 volume accounted for wellbore capacity from 1,450' to top perforation at 3,256' with 100% excess. TOOH with work string. WOC over the weekend. Shut-in well for the day.
- 10/4/21** Checked well pressures: Tubing: 0 psi, Casing: 0 psi, Bradenhead: 0 psi. Bled down well. TIH and tagged plug #1 top at 1,065'. R/U cementing services. Attempted to pressure test production casing to 500 psi but casing failed to hold pressure. Re-pumped plug #1 from

1,065'-800' to cover the Yates and Rustler formation tops. TOOH with work string. WOC 4 hours. TIH and tagged plug #1 top at 795'. Spotted 9.5 ppg mud spacer from 795'-554'. Attempted to load and pressure test Bradenhead but Bradenhead failed to hold pressure. Shut-in well for the day.

- 10/5/21** Checked well pressures: Tubing: 0 psi, Casing: 0 psi, Bradenhead: 0 psi. Bled down well. R/U wireline services. RIH and perforated squeeze holes at 534'. R/U cementing services. Attempted to establish circulation down 4 ½" production casing through perforations at 534' and back around and out Bradenhead valve at surface but was unsuccessful. NMOCD requested cement be pumped down Bradenhead until pressure was encountered in an attempt to lock up and isolate Bradenhead and back side of surface casing. R/U cementing services. Pumped 176 sx of cement down Bradenhead. Casing was left under 20 psi of pressure and Bradenhead was left under 10 psi of pressure. WOC 4 hours. TIH and tagged cement at 609'. R/U cementing services. Pumped surface plug inside production casing from 609'-surface to cover the surface casing shoe. L/D tubing to surface. WOC overnight. Shut-in well for the day.
- 10/6/21** Checked well pressures: Tubing: 0 psi, Casing: 0 psi, Bradenhead: 0 psi. Bled down well. P/U 1 joint of tubing and tagged cement at surface. N/D BOP, N/U wellhead. R/D and move to Cato San Andres Unit #61.
- 11/2/21** Checked well pressures: Tubing: N/A, Casing: 0 psi, Bradenhead: 0 psi. Bled down well. Dug out wellhead with backhoe. Performed wellhead cut-off. Cement was at surface in both 4 ½" production casing and 8-5/8" surface casing annulus. Installed subsurface P&A marker per NMOCD regulations. Photographed the P&A marker in place and recorded its location via GPS coordinates. Back filled P&A marker. R/D and MOL.

Plug Summary:

Plug #1:(San Andres Perforations and Formation Top, Yates and Rustler Formation Tops 3,256'-795', 268 Sacks Type III Cement(Re-pumped 18 sx))

Mixed 268 sx Type III cement and spotted a balanced plug to cover the San Andres perforations and formation top, and Yates and Rustler formation tops. Re-pumped 18 sx.

Plug #2: (Surface Casing Shoe 609'-Surface, 217 Sacks Type III Cement)

RIH and perforated squeeze holes at 534'. R/U cementing services. Attempted to establish circulation down 4 ½" production casing through perforations at 534' and back around and out Bradenhead valve at surface but was unsuccessful. NMOCD requested cement be pumped down Bradenhead until pressure was encountered in an attempt to lock up and isolate Bradenhead and back side of surface casing. R/U cementing services. Pumped 176 sx of cement down Bradenhead. Casing was left under 20 psi of pressure and Bradenhead was left under 10 psi of pressure. WOC 4 hours. TIH and tagged cement at 609'. R/U cementing services. Pumped surface plug inside production casing from 609'-surface to cover the surface casing shoe. L/D tubing to surface. WOC overnight. P/U 1 joint of tubing and tagged cement at surface. N/D BOP, N/U wellhead. Dug out wellhead with backhoe. Performed wellhead cut-off. Cement was at surface in both 4 ½" production casing and 8-5/8" surface casing annulus. Installed subsurface P&A marker per NMOCD regulations. Photographed the P&A marker in place and recorded its location via GPS coordinates. Back filled P&A marker. R/D and MOL.

Wellbore Diagram

Cato San Andres Unit #44
API #: 30-005-20004
Chaves County, New Mexico

Plug 2

609 feet - Surface
609 feet plug
217 sacks of Type III Cement

Plug 1

3256 feet - 795 feet
2461 feet plug
268 sacks of Type III Cement
18 Sacks re-pumped

Surface Casing

8.625" 20# @ 504 ft

Formation

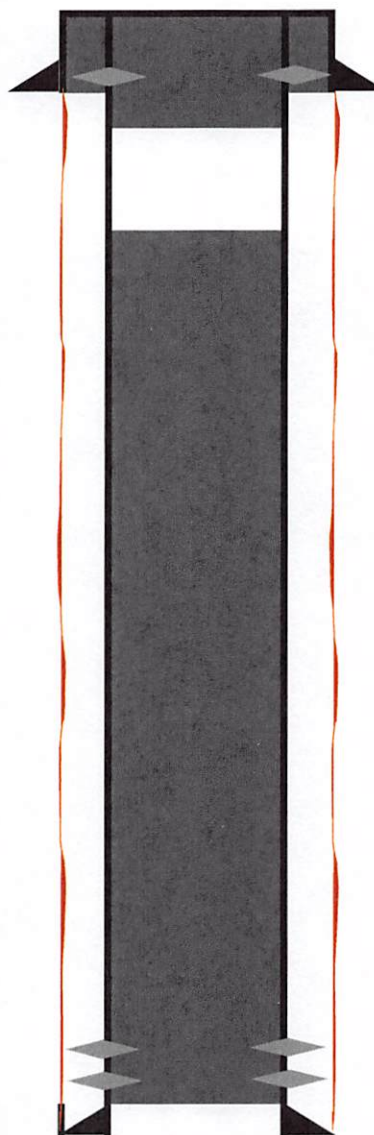
Anhy - 1125 ft
Yates - 1520 ft
San Andres - 2570 ft

Perforations

3256 ft - 3287 ft
3320 ft - 3356 ft

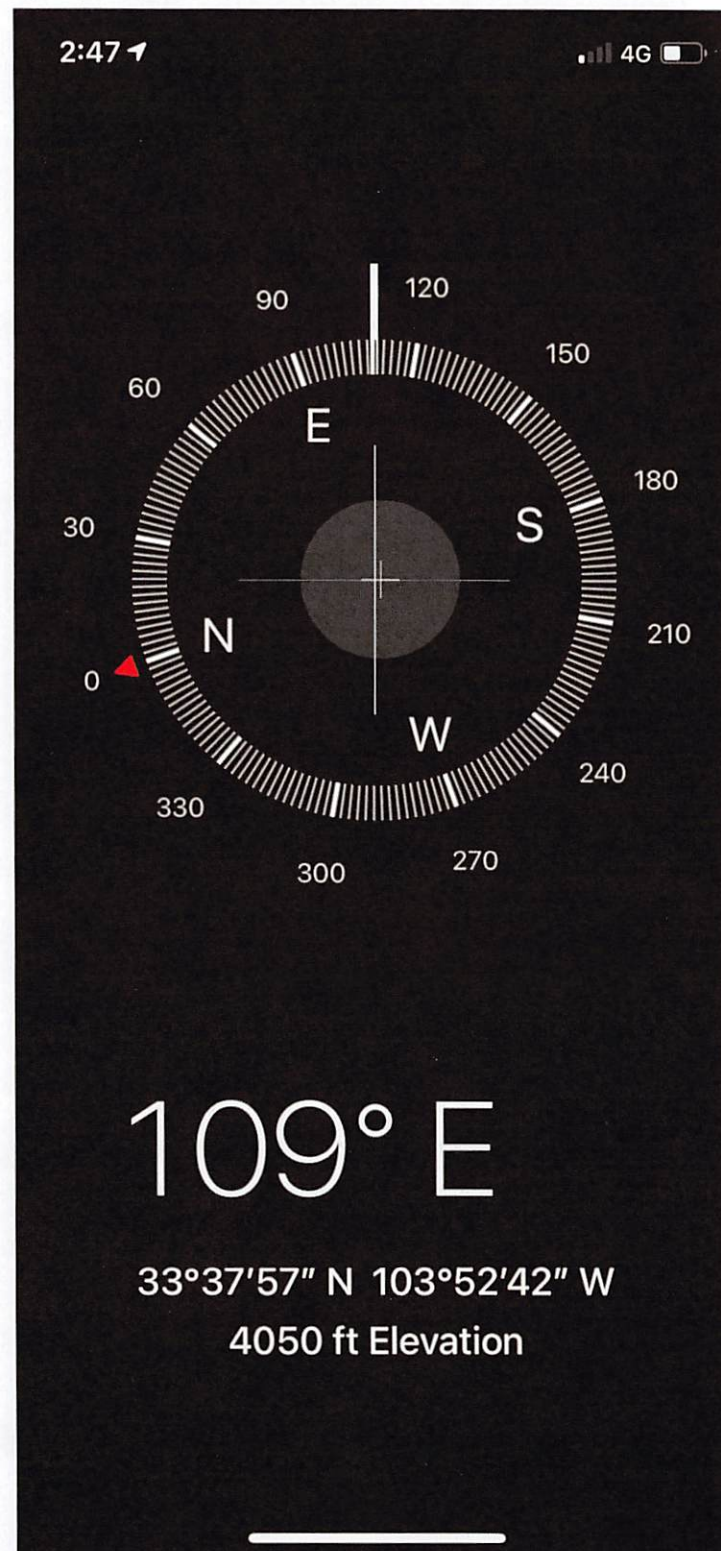
Production Casing

4.5" 9.5# @ 3500 ft









District I
1625 N. French Dr., Hobbs, NM 88240
Phone:(575) 393-6161 Fax:(575) 393-0720
District II
811 S. First St., Artesia, NM 88210
Phone:(575) 748-1283 Fax:(575) 748-9720
District III
1000 Rio Brazos Rd., Aztec, NM 87410
Phone:(505) 334-6178 Fax:(505) 334-6170
District IV
1220 S. St Francis Dr., Santa Fe, NM 87505
Phone:(505) 476-3470 Fax:(505) 476-3462

State of New Mexico
Energy, Minerals and Natural Resources
Oil Conservation Division
1220 S. St Francis Dr.
Santa Fe, NM 87505

CONDITIONS

Action 383898

CONDITIONS

Operator: CANO PETRO OF NEW MEXICO, INC. 801 Cherry Street Fort Worth, TX 76102	OGRID: 248802
	Action Number: 383898
	Action Type: [C-103] Sub. Plugging (C-103P)

CONDITIONS

Created By	Condition	Condition Date
samuel.romero	Operator must submit a C-103Q within one year from plugging date in order for OCD to perform a site inspection	10/2/2024