

Submit 1 Copy To Appropriate District
Office
District I – (575) 393-6161
1625 N. French Dr., Hobbs, NM 88240
District II – (575) 748-1283
811 S. First St., Artesia, NM 88210
District III – (505) 334-6178
1000 Rio Brazos Rd., Aztec, NM 87410
District IV – (505) 476-3460
1220 S. St. Francis Dr., Santa Fe, NM
87505

State of New Mexico
Energy, Minerals and Natural Resources

OIL CONSERVATION DIVISION
1220 South St. Francis Dr.
Santa Fe, NM 87505

Form C-103
Revised July 18, 2013

WELL API NO. 30-005-20170	
5. Indicate Type of Lease STATE <input checked="" type="checkbox"/> FEE <input type="checkbox"/>	
6. State Oil & Gas Lease No.	
7. Lease Name or Unit Agreement Name Cato San Andres Unit	
8. Well Number 031	
9. OGRID Number 248802	
10. Pool name or Wildcat Cato; San Andres	
SUNDRY NOTICES AND REPORTS ON WELLS (DO NOT USE THIS FORM FOR PROPOSALS TO DRILL OR TO DEEPEN OR PLUG BACK TO A DIFFERENT RESERVOIR. USE "APPLICATION FOR PERMIT" (FORM C-101) FOR SUCH PROPOSALS.) 1. Type of Well: Oil Well <input checked="" type="checkbox"/> Gas Well <input type="checkbox"/> Other <input type="checkbox"/> 2. Name of Operator Cano Petro of New Mexico, Inc. 3. Address of Operator 801 Cherry Street Suite 3200 Unit 25 Fort Worth, TX 76102 4. Well Location Unit Letter <u>F</u> <u>1980</u> feet from the <u>N</u> line and <u>1980</u> feet from the <u>W</u> line Section <u>10</u> Township <u>08S</u> Range <u>30E</u> NMPM County <u>Chaves</u> 11. Elevation (Show whether DR, RKB, RT, GR, etc.) 4077	

12. Check Appropriate Box to Indicate Nature of Notice, Report or Other Data

NOTICE OF INTENTION TO:

PERFORM REMEDIAL WORK ☐ PLUG AND ABANDON ☐
 TEMPORARILY ABANDON ☐ CHANGE PLANS ☐
 PULL OR ALTER CASING ☐ MULTIPLE COMPL ☐
 DOWNHOLE COMMINGLE ☐
 CLOSED-LOOP SYSTEM ☐
 OTHER: ☐

SUBSEQUENT REPORT OF:

REMEDIAL WORK ☐ ALTERING CASING ☐
 COMMENCE DRILLING OPNS. ☐ P AND A ☒
 CASING/CEMENT JOB ☐
 OTHER: ☐

13. Describe proposed or completed operations. (Clearly state all pertinent details, and give pertinent dates, including estimated date of starting any proposed work). SEE RULE 19.15.7.14 NMAC. For Multiple Completions: Attach wellbore diagram of proposed completion or recompletion.

NMOCD plugged well according to attached EOW report and plugged WBD.

Spud Date:

Rig Release Date:

I hereby certify that the information above is true and complete to the best of my knowledge and belief.

SIGNATURE: Ethan Wakefield

TITLE: Authorized Representative

DATE 9/16/24

Type or print name: Ethan Wakefield E-mail address: e.wakefield@dwsrigs.com

PHONE: 405-343-7736

For State Use Only

APPROVED BY: _____ TITLE: _____ DATE: _____

Cano Petro Inc./NMOCD OWP

Plug And Abandonment End Of Well Report

Cato San Andres Unit #031

1980' FNL & 1980' FWL, Section 10, T8S, R30E

Chaves County, NM / API 30-005-20170

Work Summary:

- 4/17/22** Made NMOCD P&A operations notifications at 9:00 AM MST.
- 4/18/22** MOL and R/U P&A rig. Prepped location with backhoe. Checked well pressures: Tubing: 0 psi, Casing: 0 psi, Bradenhead: 0 psi. Bled down well. Removed horse's head. Worked stuck rod string. L/D polish rod and 63 3/4" sucker rod. The 64th rod was wax worn and parted. N/D wellhead, N/U BOP and function tested. Worked stuck tubing. L/D 100 joints of 2-3/8" tubing and rods, the last joint of tubing had a collar on it. Tallied 2-3/8" workstring. Secured and shut-in well for the day.
- 4/19/22** Checked well pressures: Tubing: 0 psi, Casing: 0 psi, Bradenhead: 0 psi. Bled down well. P/U 4 1/2" casing scraper and work string and tagged up at 1,591'. TOOH. N/D BOP. P/U 4 1/2" packer and set at 33'. Filled production casing with fresh water. Cut-off wellhead. Welded on Bradenhead flange. N/U BOP. Un-set packer and TOOH. Successfully filled wellbore to surface with 23 bbls of fresh water. P/U 4 1/2" packer, TIH and set at 1,400'. Attempted to establish injection rate below packer at 1,400' but was unsuccessful. Water started circulating out of casing. Un-set packer and TOOH. Secured and shut-in well for the day.
- 4/20/22** Checked well pressures: Tubing: 0 psi, Casing: 0 psi, Bradenhead: 0 psi. Bled down well. P/U packer, TIH and set at 960'. Attempted to establish injection rate below packer at 960' with 2 bbls of fresh water but wellbore immediately pressured up. Pumped fresh water down production casing and water started circulating out of

Bradenhead. Un-set packer and TOOH. Waited on NMOCD to start cementing operations. Secured and shut-in well for the day. Prepped next locations with backhoe.

4/21/22 Checked well pressures: Tubing: 0 psi, Casing: 0 psi, Bradenhead: 0 psi. Bled down well. Rig crew prepped next few locations to P&A while waiting on approval to start cementing operations. Cleaned up oil spill on Cato #006 tank battery. Secured and shut-in well for the day.

4/26/22 Checked well pressures: Tubing: 0 psi, Casing: 0 psi, Bradenhead: 0 psi. Bled down well. R/U wireline services. RIH and perforated squeeze holes at 1,590'. P/U 4 ½" packer, TIH and set at 960'. Attempted to establish injection rate into perforations at 1,590' but was unsuccessful. Un-set packer and TOOH. R/U wireline services. RIH and perforated squeeze holes at 1,100'. P/U 4 ½" packer, TIH and set at 960'. Attempted to establish injection rate into perforations at 1,100' but was unsuccessful. Un-set packer and TOOH. P/U cementing sub, TIH to 1,591'. R/U cementing services. Pumped plug #1 from 1,591'-900' to cover the San Andres perforations and formation top, Yates and Rustler formation tops. L/D tubing up to next plug depth. TOOH with remaining tubing. WOC 4 hours. TIH and tagged plug #1 top at 1,308'. R/U cementing services. Re-pumped plug #1 from 1,308'-900' to cover the Rustler formation top. L/D tubing up to next plug depth. TOOH with remaining tubing. WOC overnight. Secured and shut-in well for the day.

4/27/22 Checked well pressures: Tubing: 0 psi, Casing: 0 psi, Bradenhead: 0 psi. Bled down well. TIH and tagged plug #1 top at 950'. R/U cementing services. Spotted 9.5 ppg mud spacer from 950'-346'. R/U wireline services. RIH and perforated squeeze holes at 346'. R/U cementing services. Successfully established circulation down production casing through perforations at 346' and back around and out Bradenhead valve at surface with 10 bbls of fresh water. Successfully circulated cement down production casing through perforations at 346' and back around and out Bradenhead valve at surface. N/D BOP, N/U wellhead. R/D and MOL.

5/2/22 Checked well pressures: Tubing: 0 psi, Casing: 0 psi, Bradenhead: 0 psi. Bled down well. Dug out wellhead with backhoe. Performed wellhead cut-off. Ran weighted tally tape down both the 8-5/8" surface casing annulus and 4 ½" production casing. Tagged cement 80' down in 8-5/8" surface casing annulus and 35' down in the 4 ½" production casing. Ran ¾" poly pipe down both casing strings. R/U cementing services. Topped-off well with 19 sx of cement. Installed subsurface P&A marker per NMOCD regulations. Photographed the

P&A marker in place and recorded its location via GPS coordinates. Back filled P&A marker. R/D and MOL.

Plug Summary:

Plug #1:(San Andres Perforations and Formation Top, Yates and Rustler Formation Tops 1,591'-950', 74 Sacks Type III Cement(Re-pumped 28 sx))

Pumped plug #1 from 1,591'-900' to cover the San Andres perforations and formation top, Yates and Rustler formation tops. L/D tubing up to next plug depth. TOOH with remaining tubing. WOC 4 hours. TIH and tagged plug #1 top at 1,308'. R/U cementing services. Re-pumped plug #1 from 1,308'-900' to cover the Rustler formation top. L/D tubing up to next plug depth. TOOH with remaining tubing. WOC overnight. TIH and tagged plug #1 top at 950'.

Plug #2: (Surface Casing Shoe 346'-Surface, 127 Sacks Type III Cement(19 sx for Top-Off))

RIH and perforated squeeze holes at 346'. R/U cementing services. Successfully established circulation down production casing through perforations at 346' and back around and out Bradenhead valve at surface with 10 bbls of fresh water. Successfully circulated cement down production casing through perforations at 346' and back around and out Bradenhead valve at surface. N/D BOP, N/U wellhead. Dug out wellhead with backhoe. Performed wellhead cut-off. Ran weighted tally tape down both the 8-5/8" surface casing annulus and 4 1/2" production casing. Tagged cement 80' down in 8-5/8" surface casing annulus and 35' down in the 4 1/2" production casing. Ran 3/4" poly pipe down both casing strings. R/U cementing services. Topped-off well with 19 sx of cement. Installed subsurface P&A marker per NMOC regulations. Photographed the P&A marker in place and recorded its location via GPS coordinates. Back filled P&A marker. R/D and MOL.

End of Well Wellbore Diagram

Cato San Andres Unit #031
API #: 30-005-20170
Chaves County, New Mexico

Plug 2

346 feet - Surface
346 feet plug
127 sacks of Type III Cement
19 sacks for Top off

Plug 1

1591 feet - 950 feet
641 feet plug
74 sacks of Type III Cement
Repumped 28 sks of type III

Surface Casing

8.625" 24# @ 296 ft

Formation

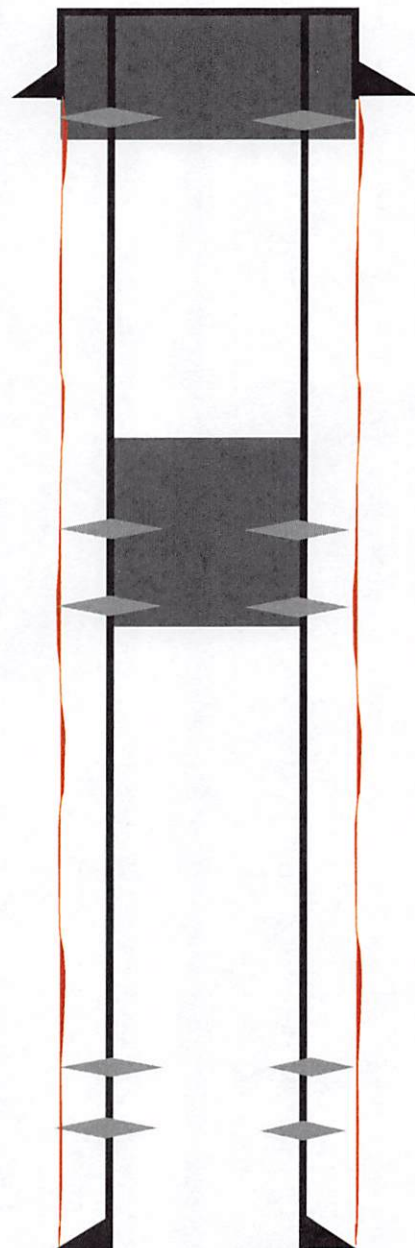
Rustler - 1072 feet
Yates - 1545 feet
San Andres - 3230 ft

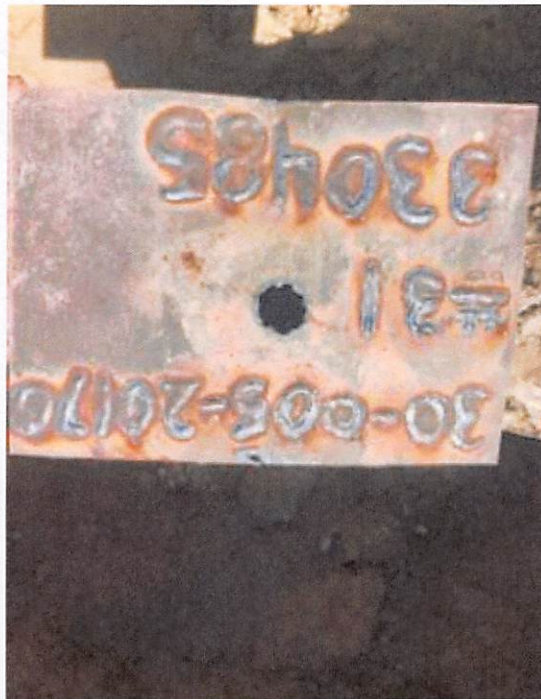
Perforations

3280 feet - 3286 feet
3296 feet - 3304 feet
3308 feet - 3320 feet
3354 feet - 3381 feet
3385 feet - 3390 feet

Production Casing

4.5" 9.5# @ 3453 ft









District I
1625 N. French Dr., Hobbs, NM 88240
Phone:(575) 393-6161 Fax:(575) 393-0720
District II
811 S. First St., Artesia, NM 88210
Phone:(575) 748-1283 Fax:(575) 748-9720
District III
1000 Rio Brazos Rd., Aztec, NM 87410
Phone:(505) 334-6178 Fax:(505) 334-6170
District IV
1220 S. St Francis Dr., Santa Fe, NM 87505
Phone:(505) 476-3470 Fax:(505) 476-3462

State of New Mexico
Energy, Minerals and Natural Resources
Oil Conservation Division
1220 S. St Francis Dr.
Santa Fe, NM 87505

CONDITIONS

Action 383880

CONDITIONS

Operator: CANO PETRO OF NEW MEXICO, INC. 801 Cherry Street Fort Worth, TX 76102	OGRID: 248802
	Action Number: 383880
	Action Type: [C-103] Sub. Plugging (C-103P)

CONDITIONS

Created By	Condition	Condition Date
samuel.romero	Operator must submit a C-103Q within one year from plugging date in order for OCD to perform a site inspection.	10/2/2024