

C-102  Sumbit electronically Via OCD Permitting	State of New Mexico Energy, Minerals & Natural Resources Department OIL CONVERSION DIVISION	Revised July, 09 2024	
		Submittal Type:	<input checked="" type="checkbox"/> Initial Submittal
			<input type="checkbox"/> Amended Report
		<input type="checkbox"/> As Drilled	

WELL LOCATION INFORMATION			
API Number 30-015-55529	Pool Code 96921	Pool Name Los Medanos; Wolfcamp, North (Gas)	
Property Code 336414	Property Name JRU APACHE FEDERAL COM		Well Number 112H
OGRID No. 373075	Operator Name XTO PERMIAN OPERATING, LLC.		Ground Level Elevation 3,348'
Surface Owner: <input type="checkbox"/> State <input type="checkbox"/> Fee <input type="checkbox"/> Tribal <input checked="" type="checkbox"/> Federal		Mineral Owner: <input type="checkbox"/> State <input type="checkbox"/> Fee <input type="checkbox"/> Tribal <input checked="" type="checkbox"/> Federal	

Surface Hole Location									
UL	Section	Township	Range	Lot	Ft. from N/S	Ft. from E/W	Latitude	Longitude	County
I	13	22S	30E		2,515 FSL	818 FEL	32.391762	-103.828231	EDDY

Bottom Hole Location									
UL	Section	Township	Range	Lot	Ft. from N/S	Ft. from E/W	Latitude	Longitude	County
E	14	22S	30E		1,650 FNL	50 FWL	32.394872	-103.860081	EDDY




Dedicated Acres 320.00	Infill or Defining Well DEFINING	Defining Well API	Overlapping Spacing Unit (Y/N) N	Consolidation Code P
Order Numbers. R-279-C			Well Setbacks are under Common Ownership: <input checked="" type="checkbox"/> Yes <input type="checkbox"/> No	

Kick Off Point (KOP)									
UL	Section	Township	Range	Lot	Ft. from N/S	Ft. from E/W	Latitude	Longitude	County
I	13	22S	30E		2,515 FSL	818 FEL	32.391762	-103.828231	EDDY

First Take Point (FTP)									
UL	Section	Township	Range	Lot	Ft. from N/S	Ft. from E/W	Latitude	Longitude	County
H	13	22S	30E		1,650 FNL	330 FEL	32.394837	-103.826650	EDDY

Last Take Point (LTP)									
UL	Section	Township	Range	Lot	Ft. from N/S	Ft. from E/W	Latitude	Longitude	County
E	14	22S	30E		1,650 FNL	100 FWL	32.394872	-103.859919	EDDY

Unitized Area or Area of Interest NMNM-070965X	Spacing Unit Type : <input checked="" type="checkbox"/> Horizontal <input type="checkbox"/> Vertical	Ground Elevation 3,348'
---	--	----------------------------

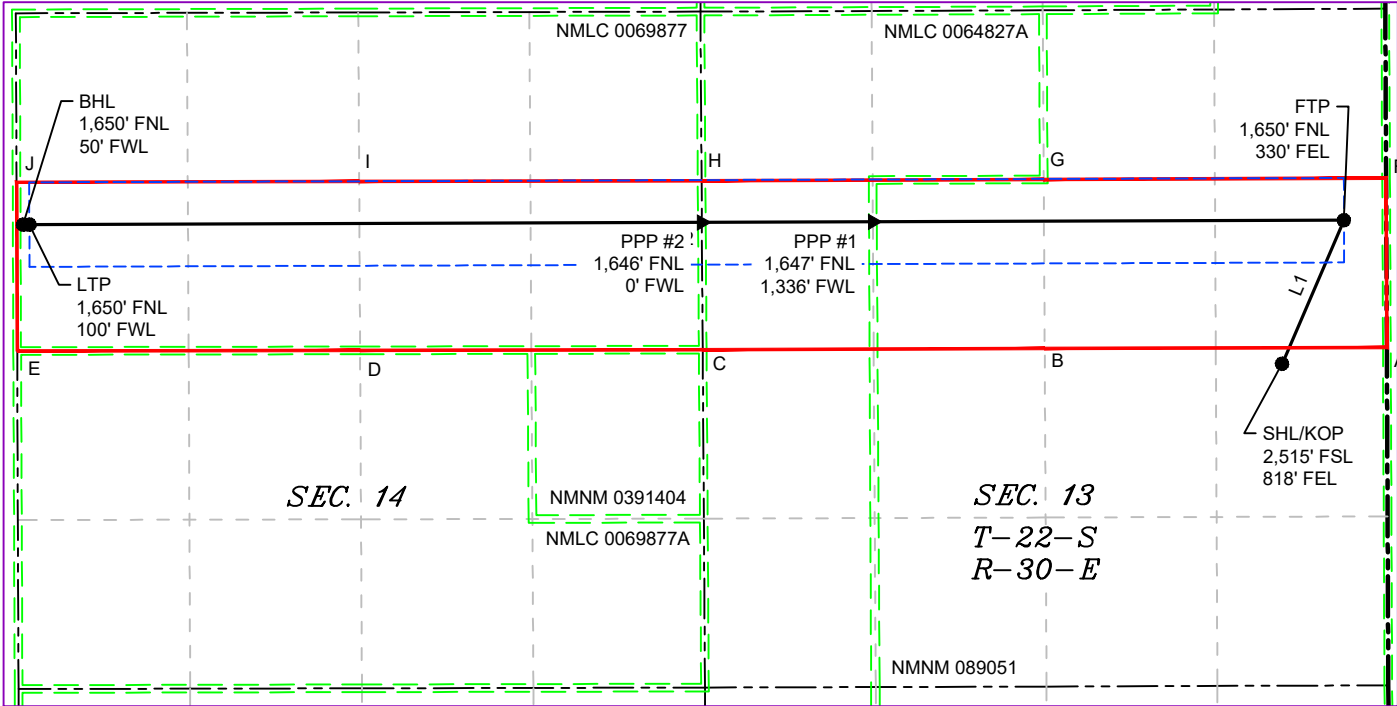
<div>OPERATOR CERTIFICATIONS</div> <p><i>I hereby certify that the information contained herein is true and complete to the best of my knowledge and belief, and, if the well is vertical or directional well, that this organization either owns a working interest or unleased mineral interest in the land including the proposed bottom hole location or has a right to drill this at this location pursuant to a contract with an owner of a working interest or unleased mineral interest, or a voluntary pooling agreement or a compulsory pooling order of heretofore entered by the division.</i></p> <p><i>If this well is a horizontal well, I further certify that this organization has received the consent of at least one lessee or owner of a working interest or unleased mineral interest in each tract (in the target pool or information) in which any part of the well's completed interval will be located or obtained a compulsory pooling order from the division.</i></p> <div><div></div><div>10/24/24</div></div> <div>SignatureDate</div> <div>Jena Austin</div> <div>Printed Name</div> <div>Jena.N.Austin@ExxonMobil.com</div> <div>Email Address</div>	<div>SURVEYOR CERTIFICATIONS</div> <p><i>I hereby certify that the well location shown on this plat was plotted from field notes of actual surveys made by me or under my supervision, and that the same is true and correct to the best of my belief</i></p> <div><div></div><div></div></div> <div>Signature and Seal of Professional Surveyor</div> <div>MARK DILLON HARP 23786</div> <div>Certificate Number</div> <div>10/23/2024</div> <div>Date of Survey</div> <div>DB</div> <div>618.013002.10-25</div>
---	---

Note: No allowable will be assigned to this completion until all interest have been consolidated or a non-standard unit has been approved by the division.

ACREAGE DEDICATION PLATS

This grid represents a standard section. You may superimpose a non-standard section, or larger area, over this grid. Operators must outline the dedicated acreage in a red box, clearly show the well surface location and bottom hole location, if it is a directionally drilled, with the dimensions from the section lines in the cardinal directions. If this is a horizontal wellbore show on this plat the location of the First Take Point and Last Take Point, and the point within the Completed interval (other then the First Take Point and Last Take Point) that is closest to any outer boundary of the tract.

Surveyor shall use the latest United States government survey or dependent resurvey. Well locations will be in reference to the New Mexico Principal Meridian. If the land in not surveyed, contact the OCD Engineering Bureau. Independent subdivision surveys will not be acceptable.



LINE TABLE		
LINE	AZIMUTH	LENGTH
L1	023°17'49"	1,220.49'
L2	269°48'30"	10,318.83'

LEGEND	
	SECTION LINE
	PROPOSED WELL BORE
	NEW MEXICO MINERAL LEASE
	330' BUFFER
	ALLOCATION AREA

COORDINATE TABLE					
SHL/KOP (NAD 83 NME)			SHL/KOP (NAD 27 NME)		
Y =	506,622.6	N	Y =	506,561.9	N
X =	697,244.7	E	X =	656,063.2	E
LAT. =	32.391762	°N	LAT. =	32.391639	°N
LONG. =	103.828231	°W	LONG. =	103.827737	°W
FTP (NAD 83 NME)			FTP (NAD 27 NME)		
Y =	507,743.6	N	Y =	507,682.9	N
X =	697,727.4	E	X =	656,545.9	E
LAT. =	32.394837	°N	LAT. =	32.394714	°N
LONG. =	103.826650	°W	LONG. =	103.826156	°W
PPP #1 (NAD 83 NME)			PPP #1 (NAD 27 NME)		
Y =	507,731.3	N	Y =	507,670.6	N
X =	694,047.4	E	X =	652,866.0	E
LAT. =	32.394851	°N	LAT. =	32.394728	°N
LONG. =	103.838572	°W	LONG. =	103.838078	°W
PPP #2 (NAD 83 NME)			PPP #2 (NAD 27 NME)		
Y =	507,726.8	N	Y =	507,666.1	N
X =	692,711.4	E	X =	651,530.0	E
LAT. =	32.394855	°N	LAT. =	32.394732	°N
LONG. =	103.842901	°W	LONG. =	103.842406	°W
LTP (NAD 83 NME)			LTP (NAD 27 NME)		
Y =	507,709.3	N	Y =	507,648.5	N
X =	687,458.6	E	X =	646,277.2	E
LAT. =	32.394872	°N	LAT. =	32.394749	°N
LONG. =	103.859919	°W	LONG. =	103.859424	°W
BHL (NAD 83 NME)			BHL (NAD 27 NME)		
Y =	507,709.0	N	Y =	507,648.3	N
X =	687,408.6	E	X =	646,227.2	E
LAT. =	32.394872	°N	LAT. =	32.394749	°N
LONG. =	103.860081	°W	LONG. =	103.859586	°W

CORNER COORDINATES (NAD 83 NME)				
A - Y =	506,750.2	N	A - X =	698,061.8 E
B - Y =	506,741.3	N	B - X =	695,389.1 E
C - Y =	506,732.3	N	C - X =	692,717.9 E
D - Y =	506,727.2	N	D - X =	690,042.0 E
E - Y =	506,721.9	N	E - X =	687,363.8 E
F - Y =	508,072.9	N	F - X =	698,055.8 E
G - Y =	508,062.1	N	G - X =	695,381.7 E
H - Y =	508,052.6	N	H - X =	692,709.2 E
I - Y =	508,046.7	N	I - X =	690,034.9 E
J - Y =	508,040.4	N	J - X =	687,358.6 E
CORNER COORDINATES (NAD 27 NME)				
A - Y =	506,689.5	N	A - X =	656,880.3 E
B - Y =	506,680.6	N	B - X =	654,207.6 E
C - Y =	506,671.6	N	C - X =	651,536.5 E
D - Y =	506,666.5	N	D - X =	648,860.6 E
E - Y =	506,661.2	N	E - X =	646,182.4 E
F - Y =	508,012.2	N	F - X =	656,874.3 E
G - Y =	508,001.4	N	G - X =	654,200.3 E
H - Y =	507,991.9	N	H - X =	651,527.8 E
I - Y =	507,986.0	N	I - X =	648,853.5 E
J - Y =	507,979.7	N	J - X =	646,177.3 E

P:\618.013 XTO Energy - NM\002 James Ranch Unit\10 - APACHE DI - EDDY\Wells\25 - 112H\DWG\TO-CLIENT\APACHE 112H 03-14-2022.dwg

**District I**  
1625 N. French Dr., Hobbs, NM 88240  
Phone:(575) 393-6161 Fax:(575) 393-0720  
**District II**  
811 S. First St., Artesia, NM 88210  
Phone:(575) 748-1283 Fax:(575) 748-9720  
**District III**  
1000 Rio Brazos Rd., Aztec, NM 87410  
Phone:(505) 334-6178 Fax:(505) 334-6170  
**District IV**  
1220 S. St Francis Dr., Santa Fe, NM 87505  
Phone:(505) 476-3470 Fax:(505) 476-3462

**State of New Mexico**  
**Energy, Minerals and Natural Resources**  
**Oil Conservation Division**  
**1220 S. St Francis Dr.**  
**Santa Fe, NM 87505**

CONDITIONS

Action 398230

CONDITIONS

Operator: XTO PERMIAN OPERATING LLC. 6401 HOLIDAY HILL ROAD MIDLAND, TX 79707	OGRID: 373075
	Action Number: 398230
	Action Type: [C-102] Well Location & Acreage Plat (C-102)

CONDITIONS

Created By	Condition	Condition Date
matthew.gomez	None	11/1/2024