

Office
 District I – (575) 393-6161
 1625 N. French Dr., Hobbs, NM 88240
 District II – (575) 748-1283
 811 S. First St., Artesia, NM 88210
 District III – (505) 334-6178
 1000 Rio Brazos Rd., Aztec, NM 87410
 District IV – (505) 476-3460
 1220 S. St. Francis Dr., Santa Fe, NM
 87505

State of New Mexico
 Energy, Minerals and Natural Resources

Form C-103
 Revised July 18, 2013

OIL CONSERVATION DIVISION
 1220 South St. Francis Dr.
 Santa Fe, NM 87505

WELL API NO. MULTIPLE
5. Indicate Type of Lease STATE <input checked="" type="checkbox"/> FEE <input type="checkbox"/>
6. State Oil & Gas Lease No.
7. Lease Name or Unit Agreement Name Mesa Verde (Multiple)
8. Well Number MULTIPLE
9. OGRID Number 16696
10. Pool name or Wildcat Multiple

SUNDRY NOTICES AND REPORTS ON WELLS (DO NOT USE THIS FORM FOR PROPOSALS TO DRILL OR TO DEEPEN OR PLUG BACK TO A DIFFERENT RESERVOIR. USE "APPLICATION FOR PERMIT" (FORM C-101) FOR SUCH PROPOSALS.)	
1. Type of Well: Oil Well <input checked="" type="checkbox"/> Gas Well <input type="checkbox"/> Other <input type="checkbox"/>	
2. Name of Operator OXY USA INC	
3. Address of Operator 5 GREENWAY PLAZA SUITE 110, HOUSTON TX 77046	
4. Well Location	
Unit Letter _____ : _____ feet from the _____ line and _____ feet from the _____ line	
Section 16 Township 24S Range 32E NMPM County LEA	
11. Elevation (Show whether DR, RKB, RT, GR, etc.)	

12. Check Appropriate Box to Indicate Nature of Notice, Report or Other Data

NOTICE OF INTENTION TO: PERFORM REMEDIAL WORK <input type="checkbox"/> PLUG AND ABANDON <input type="checkbox"/> TEMPORARILY ABANDON <input type="checkbox"/> CHANGE PLANS <input type="checkbox"/> PULL OR ALTER CASING <input type="checkbox"/> MULTIPLE COMPL <input type="checkbox"/> DOWNHOLE COMMINGLE <input type="checkbox"/> CLOSED-LOOP SYSTEM <input type="checkbox"/> OTHER: SURFACE COMMINGLE – PLC 799 <input checked="" type="checkbox"/>		SUBSEQUENT REPORT OF: REMEDIAL WORK <input type="checkbox"/> ALTERING CASING <input type="checkbox"/> COMMENCE DRILLING OPNS. <input type="checkbox"/> P AND A <input type="checkbox"/> CASING/CEMENT JOB <input type="checkbox"/> OTHER: <input type="checkbox"/>	
---	--	---	--

13. Describe proposed or completed operations. (Clearly state all pertinent details, and give pertinent dates, including estimated date of starting any proposed work). SEE RULE 19.15.7.14 NMAC. For Multiple Completions: Attach wellbore diagram of proposed completion or recompletion.

OXY USA INC requests approval to add the following wells to PLC 799 for Mesa Verde CTB. (P-18-24S-32E). These wells will be included in the currently approved pools of Mesa Verde; Wolfcamp (98252) and Mesa Verde; Bone Spring (96229) and approved PAs of NMNM 137096A (Bone Spring) and NMNM 137099A (Wolfcamp).

The facility described in PLC 799 is unchanged. Production is allocated to each well from the facility oil and gas FMPs based on well test as set forth in PLC 799. The C-102 forms are attached.

This request is for oil and gas production.

NMNM 137099A (Wolfcamp)
 Mesa Verde WC Unit #39H 30-025-48824
 Mesa Verde WC Unit #40H 30-025-48825
 Mesa Verde WC Unit #54H 30-025-48817
 Mesa Verde WC Unit #55H 30-025-48863

NMNM 137096A (Bone Spring)
 Mesa Verde BS Unit #74H 30-025-48819
 Mesa Verde BS Unit #73H 30-025-48818

Sp id Date:

Rig Release Date:

I hereby certify that the information above is true and complete to the best of my knowledge and belief.

SIGNATURE Eric Fortier TITLE REGULATORY ENGINEER DATE 12/10/2024

Type or print name ERIC FORTIER E-mail address: ERIC_FORTIER@OXY.COM PHONE: 713.497.2203

For State Use Only

APPROVED BY Dean R. McClure TITLE Petroleum Engineer DATE 12/19/2024

Conditions of Approval (if any):

District I
1625 N. French Dr., Hobbs, NM 88240
Phone: (575) 393-6161 Fax: (575) 393-0720
District II
811 S. First St., Artesia, NM 88210
Phone: (575) 748-1283 Fax: (575) 748-9720
District III
1000 Rio Brazos Road, Aztec, NM 87410
Phone: (505) 334-6178 Fax: (505) 334-6170
District IV
1220 S. St. Francis Dr., Santa Fe, NM 87505
Phone: (505) 476-3460 Fax: (505) 476-3462

State of New Mexico
Energy, Minerals & Natural Resources Department
OIL CONSERVATION DIVISION
1220 South St. Francis Dr.
Santa Fe, NM 87505

Form C-102
Revised August 1, 2011
Submit one copy to appropriate
District Office

☐ AMENDED REPORT

WELL LOCATION AND ACREAGE DEDICATION PLAT

API Number 30-025-48824	Pool Code 98252	Pool Name MESA VERDE; WOLFCAMP
Property Code 320829	Property Name MESA VERDE WC UNIT	Well Number 39H
OGRID No. 16696	Operator Name OXY USA INC.	Elevation 3570.8'

Surface Location

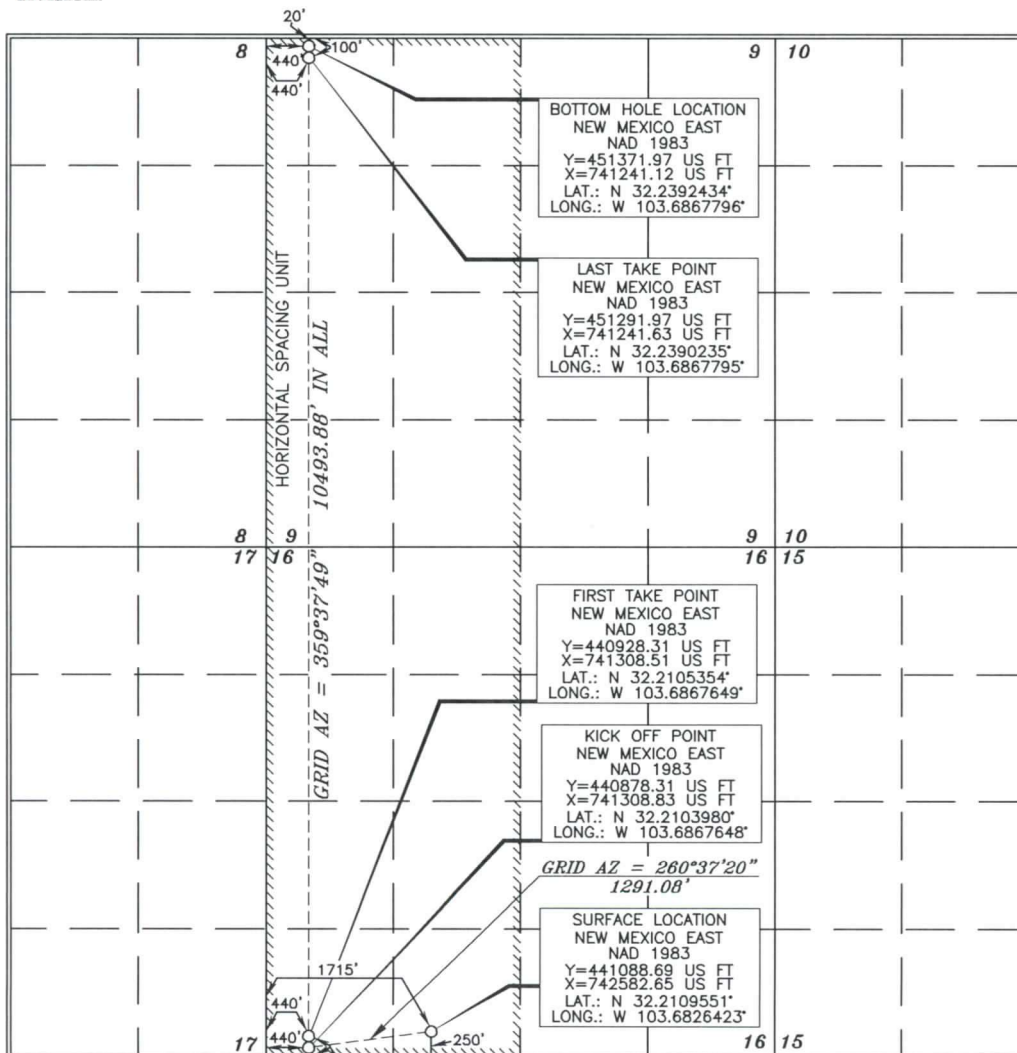
UL or lot no.	Section	Township	Range	Lot Idn	Feet from the	North/South line	Feet from the	East/West line	County
N	16	24 SOUTH	32 EAST, N.M.P.M.		250'	SOUTH	1715'	WEST	LEA

Bottom Hole Location If Different From Surface

UL or lot no.	Section	Township	Range	Lot Idn	Feet from the	North/South line	Feet from the	East/West line	County
D	9	24 SOUTH	32 EAST, N.M.P.M.		20'	NORTH	440'	WEST	LEA

Dedicated Acres 640	Joint or Infill	Consolidation Code	Order No.
-------------------------------	-----------------	--------------------	-----------

No allowable will be assigned to this completion until all interests have been consolidated or a non-standard unit has been approved by the division.



OPERATOR CERTIFICATION

I hereby certify that the information contained herein is true and complete to the best of my knowledge and belief, and that this organization either owns a working interest or unleased mineral interest in the land including the proposed bottom hole location or has a right to drill this well at this location pursuant to a contract with an owner of such a mineral or working interest, or to a voluntary pooling agreement or a compulsory pooling order heretofore entered by the division.

Signature: *Leslie Reeves* Date: **12/17/19**

Printed Name: **LESLIE REEVES**
E-mail Address: **LESLIE_REEVES@OXY.COM**

SURVEYOR CERTIFICATION

I hereby certify that the well location shown on this plat was plotted from field notes of actual surveys made by me or under my supervision, and that the same is true and correct to the best of my belief.

Date of Survey: **JUNE 25, 2019**

Signature and Seal of Professional Surveyor: *Terry J. Asst*

Certificate Number: **15079**

WO# 190625WL-b (Rev. A) (KA)

District I
1625 N. French Dr., Hobbs, NM 88240
Phone: (575) 393-6161 Fax: (575) 393-0720
District II
811 S. First St., Artesia, NM 88210
Phone: (575) 748-1283 Fax: (575) 748-9720
District III
1000 Rio Brazos Road, Aztec, NM 87410
Phone: (505) 334-6178 Fax: (505) 334-6170
District IV
1220 S. St. Francis Dr., Santa Fe, NM 87505
Phone: (505) 476-3460 Fax: (505) 476-3462

State of New Mexico
Energy, Minerals & Natural Resources Department
OIL CONSERVATION DIVISION
1220 South St. Francis Dr.
Santa Fe, NM 87505

Form C-102
Revised August 1, 2011
Submit one copy to appropriate
District Office

☐ AMENDED REPORT

WELL LOCATION AND ACREAGE DEDICATION PLAT

API Number 30-025- 48825	Pool Code 98252	Pool Name MESA VERDE; WOLFCAMP
Property Code 320829	Property Name MESA VERDE WC UNIT	Well Number 40H
OGRID No. 16696	Operator Name OXY USA INC.	Elevation 3571.8'

Surface Location

UL or lot no.	Section	Township	Range	Lot Idn	Feet from the	North/South line	Feet from the	East/West line	County
N	16	24 SOUTH	32 EAST, N.M.P.M.		250'	SOUTH	1750'	WEST	LEA

Bottom Hole Location If Different From Surface

UL or lot no.	Section	Township	Range	Lot Idn	Feet from the	North/South line	Feet from the	East/West line	County
C	9	24 SOUTH	32 EAST, N.M.P.M.		20'	NORTH	1370'	WEST	LEA

Dedicated Acres	Joint or Infill	Consolidation Code	Order No.
640			

No allowable will be assigned to this completion until all interests have been consolidated or a non-standard unit has been approved by the division.

<p>OPERATOR CERTIFICATION</p> <p>I hereby certify that the information contained herein is true and complete to the best of my knowledge and belief, and that this organization either owns a working interest or unleased mineral interest in the land including the proposed bottom hole location or has a right to drill this well at this location pursuant to a contract with an owner of such a mineral or working interest, or to a voluntary pooling agreement or a compulsory pooling order heretofore entered by the division.</p> <p><u>Leslie T. Reeves</u> 12/18/19 Signature Date</p> <p>LESLIE REEVES Printed Name</p> <p><u>LESLIE_REEVES@OXY.COM</u> E-mail Address</p>					
<p>SURVEYOR CERTIFICATION</p> <p>I hereby certify that the well location shown on this plat was plotted from field notes of actual surveys made by me or under my supervision, and that the same is true and correct to the best of my belief.</p> <p><u>TERRY J. ASH</u> JUNE 26, 2019 Date of Survey</p> <p><u>Terry Ash</u> 11/19/2019 Signature and Seal of Professional Surveyor</p> <p>Certificate Number 15079</p> <p>WO# 190626WL-c (Rev. A) (KA)</p>					

District I
1625 N. French Dr., Hobbs, NM 88240
Phone: (575) 393-6161 Fax: (575) 393-0720
District II
811 S. First St., Artesia, NM 88210
Phone: (575) 748-1283 Fax: (575) 748-9720
District III
1000 Rio Brazos Road, Aztec, NM 87410
Phone: (505) 334-6178 Fax: (505) 334-6170
District IV
1220 S. St. Francis Dr., Santa Fe, NM 87505
Phone: (505) 476-3460 Fax: (505) 476-3462

State of New Mexico
Energy, Minerals & Natural Resources Department
OIL CONSERVATION DIVISION
1220 South St. Francis Dr.
Santa Fe, NM 87505

Form C-102
Revised August 1, 2011
Submit one copy to appropriate
District Office

☐ AMENDED REPORT

WELL LOCATION AND ACREAGE DEDICATION PLAT

¹ API Number 30-025-48817	² Pool Code 98252	³ Pool Name MESA VERDE; WOLFCAMP
⁴ Property Code 320829	⁵ Property Name MESA VERDE WC UNIT	⁶ Well Number 54H
⁷ OGRID No. 16696	⁸ Operator Name OXY USA INC.	⁹ Elevation 3571.1'

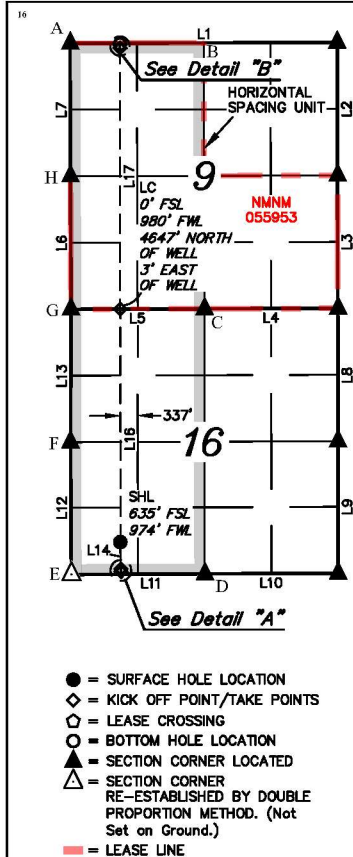
¹⁰ Surface Location

UL or lot no.	Section	Township	Range	Lot Idn	Feet from the	North/South line	Feet from the	East/West line	County
M	16	24S	32E		635	SOUTH	974	WEST	LEA

¹¹ Bottom Hole Location If Different From Surface

UL or lot no.	Section	Township	Range	Lot Idn	Feet from the	North/South line	Feet from the	East/West line	County
D	9	24S	32E		20	NORTH	985	WEST	LEA
¹² Dedicated Acres 640	¹³ Joint or Infill	¹⁴ Consolidation Code	¹⁵ Order No.						

No allowable will be assigned to this completion until all interests have been consolidated or a non-standard unit has been approved by the division.



NOTE:

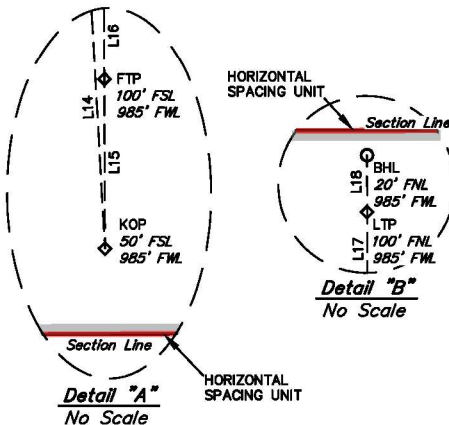
- Distances referenced on plat to section lines are perpendicular.
- Basis of Bearings is a Transverse Mercator Projection with a Central Meridian of W103°53'00" (NAD 83)
- Section breakdown information for this plat may be obtained from Utah Engineering & Land Surveying.



SCALE
DRAWN BY: N.R. 03-16-23
REV: 2 07-09-24 T.I.R.
(UPDATE WELLBORE)

HSU COORDINATES			
	NAD 27 N.M. STATE PLANE, EAST ZONE	NAD 83 N.M. STATE PLANE, EAST ZONE	
POINT	NORTHING	EASTING	NORTHING
A	451329.52	699617.04	451388.52
B	451347.63	702269.73	451406.62
C	446068.16	702306.74	446127.03
D	440787.34	702332.91	440846.08
E	440766.04	699682.53	440824.79
F	443406.61	699656.11	443465.42
G	446047.39	699654.91	446106.27
H	448988.77	699631.68	448747.20

LINE TABLE			LINE TABLE		
LINE	DIRECTION	LENGTH	LINE	DIRECTION	LENGTH
L1	S89°50'57"W	5306.47'	L10	S89°44'45"W	2649.45'
L2	N00°07'19"W	2638.74'	L11	S89°46'46"W	2650.96'
L3	N00°08'33"W	2640.00'	L12	N00°20'08"W	2641.25'
L4	S89°48'28"W	2650.31'	L13	N00°12'41"E	2641.33'
L5	S89°47'29"W	2652.40'	L14	S01°22'25"E	585.12'
L6	N00°15'58"W	2642.02'	L15	N00°20'08"W	50.00'
L7	N00°04'48"W	2641.34'	L16	N00°08'57"W	5182.30'
L8	N00°01'53"W	2640.80'	L17	N00°08'57"W	5182.36'
L9	N00°02'33"W	2638.33'	L18	N00°04'48"W	80.00'



¹⁷ OPERATOR CERTIFICATION

I hereby certify that the information contained herein is true and complete to the best of my knowledge and belief, and that this organization either owns a working interest or unleased mineral interest in the land including the proposed bottom hole location or has a right to drill this well at this location pursuant to a contract with an owner of such a mineral or working interest, or to a voluntary pooling agreement or a compulsory pooling order heretofore entered by the division.

Roni Mathew 8/6/2024

Signature Date

Roni Mathew

Printed Name

roni_mathew@oxy.com

E-mail Address

¹⁸ SURVEYOR CERTIFICATION

I hereby certify that the well location shown on this plat was plotted from field notes of actual surveys made by me or under my supervision, and that the same is true and correct to the best of my belief.

March 14, 2023

Date of Survey
Signature and Seal of Professional Surveyor:



Certificate Number:

NAD 83 (SURFACE HOLE LOCATION)	
LATITUDE = 32°12'43.23" (32.212009°)	
LONGITUDE = -103°41'06.19" (-103.685053°)	
NAD 27 (SURFACE HOLE LOCATION)	
LATITUDE = 32°12'42.79" (32.211885°)	
LONGITUDE = -103°41'04.46" (-103.684573°)	
STATE PLANE NAD 83 (N.M. EAST)	
N: 441467.47' E: 741834.74'	
STATE PLANE NAD 27 (N.M. EAST)	
N: 441408.71' E: 700650.37'	

NAD 83 (LEASE CROSSING)	
LATITUDE = 32°13'29.21" (32.224781°)	
LONGITUDE = -103°41'06.05" (-103.685015°)	
NAD 27 (LEASE CROSSING)	
LATITUDE = 32°13'28.77" (32.224657°)	
LONGITUDE = -103°41'04.32" (-103.684534°)	
STATE PLANE NAD 83 (N.M. EAST)	
N: 446113.94' E: 741818.53'	
STATE PLANE NAD 27 (N.M. EAST)	
N: 446055.06' E: 700634.36'	

NAD 83 (KICK OFF POINT)	
LATITUDE = 32°12'37.44" (32.210401°)	
LONGITUDE = -103°41'06.04" (-103.685011°)	
NAD 27 (KICK OFF POINT)	
LATITUDE = 32°12'37.00" (32.210277°)	
LONGITUDE = -103°41'04.31" (-103.684531°)	
STATE PLANE NAD 83 (N.M. EAST)	
N: 440882.69' E: 741851.21'	
STATE PLANE NAD 27 (N.M. EAST)	
N: 440823.94' E: 700666.82'	

NAD 83 (LAST TAKE POINT)	
LATITUDE = 32°14'20.48" (32.239023°)	
LONGITUDE = -103°41'06.06" (-103.685018°)	
NAD 27 (LAST TAKE POINT)	
LATITUDE = 32°14'20.04" (32.238900°)	
LONGITUDE = -103°41'04.33" (-103.684536°)	
STATE PLANE NAD 83 (N.M. EAST)	
N: 451295.26' E: 741786.35'	
STATE PLANE NAD 27 (N.M. EAST)	
N: 451236.27' E: 700602.39'	

NAD 83 (FIRST TAKE POINT)	
LATITUDE = 32°12'37.94" (32.210538°)	
LONGITUDE = -103°41'06.04" (-103.685012°)	
NAD 27 (FIRST TAKE POINT)	
LATITUDE = 32°12'37.49" (32.210415°)	
LONGITUDE = -103°41'04.31" (-103.684532°)	
STATE PLANE NAD 83 (N.M. EAST)	
N: 440932.68' E: 741850.71'	
STATE PLANE NAD 27 (N.M. EAST)	
N: 440873.93' E: 700666.32'	

NAD 83 (BOTTOM HOLE LOCATION)	
LATITUDE = 32°14'21.28" (32.239243°)	
LONGITUDE = -103°41'06.06" (-103.685018°)	
NAD 27 (BOTTOM HOLE LOCATION)	
LATITUDE = 32°14'20.83" (32.239120°)	
LONGITUDE = -103°41'04.33" (-103.684536°)	
STATE PLANE NAD 83 (N.M. EAST)	
N: 451375.25' E: 741785.90'	
STATE PLANE NAD 27 (N.M. EAST)	
N: 451316.25' E: 700601.95'	

District I
1625 N. French Dr., Hobbs, NM 88240
Phone: (575) 393-6161 Fax: (575) 393-0720
District II
811 S. First St., Artesia, NM 88210
Phone: (575) 748-1283 Fax: (575) 748-9720
District III
1000 Rio Brazos Road, Aztec, NM 87410
Phone: (505) 334-6178 Fax: (505) 334-6170
District IV
1220 S. St. Francis Dr., Santa Fe, NM 87505
Phone: (505) 476-3460 Fax: (505) 476-3462

State of New Mexico
Energy, Minerals & Natural Resources Department
OIL CONSERVATION DIVISION
1220 South St. Francis Dr.
Santa Fe, NM 87505

Form C-102
Revised August 1, 2011
Submit one copy to appropriate
District Office

☒ AMENDED REPORT

WELL LOCATION AND ACREAGE DEDICATION PLAT

¹ APT Number 30-025-48863	² Pool Code 98252	³ Pool Name MESA VERDE; WOLFCAMP
⁴ Property Code 320829	⁵ Property Name MESA VERDE WC UNIT	⁶ Well Number 55H
⁷ OGRID No. 16696	⁸ Operator Name OXY USA INC.	⁹ Elevation 3571.3'

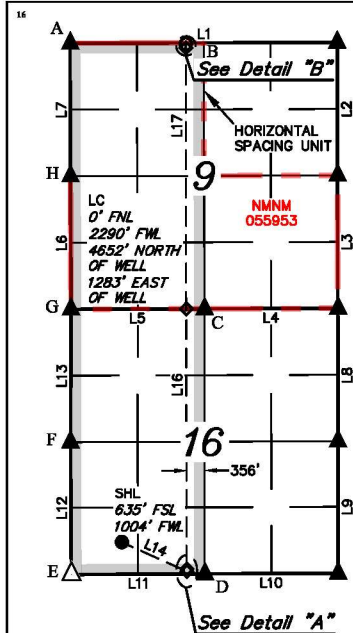
¹⁰ Surface Location

UL or lot no.	Section	Township	Range	Lot Idn	Feet from the	North/South line	Feet from the	East/West line	County
M	16	24S	32E		635	SOUTH	1004	WEST	LEA

¹¹ Bottom Hole Location If Different From Surface

UL or lot no.	Section	Township	Range	Lot Idn	Feet from the	North/South line	Feet from the	East/West line	County
C	9	24S	32E		20	NORTH	2295	WEST	LEA
¹² Dedicated Acres 640	¹³ Joint or Infill	¹⁴ Consolidation Code	¹⁵ Order No.						

No allowable will be assigned to this completion until all interests have been consolidated or a non-standard unit has been approved by the division.



- = SURFACE HOLE LOCATION
- ◇ = KICK OFF POINT/TAKE POINTS
- = LEASE CROSSING
- = BOTTOM HOLE LOCATION
- ▲ = SECTION CORNER LOCATED
- △ = SECTION CORNER RE-ESTABLISHED BY DOUBLE PROPORTION METHOD. (Not Set on Ground.)
- = LEASE LINE

NOTE:

- Distances referenced on plat to section lines are perpendicular.
- Basis of Bearings is a Transverse Mercator Projection with a Central Meridian of W103°53'00" (NAD 83)
- Section breakdown information for this plat may be obtained from Utah Engineering & Land Surveying.

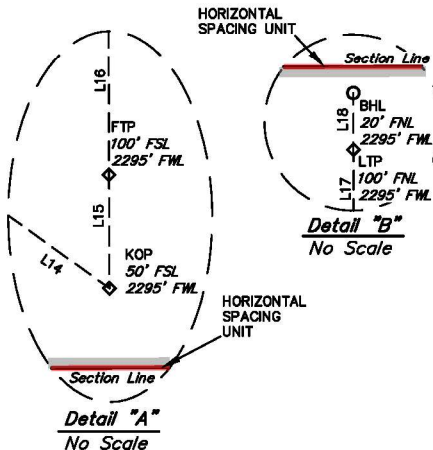


SCALE
DRAWN BY: N.R. 03-16-23
REV: 1 09-19-23 C.D.
(UPDATE WELLBORE)

HSU COORDINATES			
	NAD 27 N.M. STATE PLANE, EAST ZONE	NAD 83 N.M. STATE PLANE, EAST ZONE	
POINT	NORTHING	EASTING	NORTHING
A	451329.52	699617.04	451388.52
B	451347.63	702269.73	451406.62
C	446068.16	702306.74	446127.03
D	440787.34	702332.91	440846.08
E	440766.04	699682.53	440824.79
F	443406.61	699656.11	443465.42
G	446047.39	699654.91	446106.27
H	446088.77	699631.68	446147.70
I	446088.77	699631.68	446147.70

LINE TABLE		
LINE	DIRECTION	LENGTH
L1	S89°50'57"W	5306.47'
L2	N00°07'19"W	2638.74'
L3	N00°08'33"W	2640.00'
L4	S89°48'28"W	2650.31'
L5	S89°47'29"W	2652.40'
L6	N00°15'58"W	2642.02'
L7	N00°04'48"W	2641.34'
L8	N00°01'53"W	2640.80'
L9	N00°02'33"W	2638.33'

LINE TABLE		
LINE	DIRECTION	LENGTH
L10	S89°44'45"W	2649.45'
L11	S89°46'46"W	2650.96'
L12	N00°20'08"W	2641.25'
L13	N00°12'41"E	2641.33'
L14	S65°51'23"E	1418.07'
L15	N00°20'08"W	50.00'
L16	N00°06'57"W	5182.03'
L17	N00°06'57"W	5181.04'
L18	N00°04'48"W	80.00'



¹⁷ OPERATOR CERTIFICATION

I hereby certify that the information contained herein is true and complete to the best of my knowledge and belief, and that this organization either owns a working interest or unleased mineral interest in the land including the proposed bottom hole location or has a right to drill this well at this location pursuant to a contract with an owner of such a mineral or working interest, or to a voluntary pooling agreement or a compulsory pooling order heretofore entered by the division.

Roni Mathew 12/5/2023
Signature Date

Roni Mathew

Printed Name

roni_mathew@oxy.com

E-mail Address

¹⁸ SURVEYOR CERTIFICATION

I hereby certify that the well location shown on this plat was plotted from field notes of actual surveys made by me or under my supervision, and that the same is true and correct to the best of my belief.

March 14, 2023

Date of Survey
Signature and Seal of Professional Surveyor:



Certificate Number:

NAD 83 (SURFACE HOLE LOCATION)	
LATITUDE = 32°12'43.23" (32.212009°)	
LONGITUDE = -103°41'05.84" (-103.684956°)	
NAD 27 (SURFACE HOLE LOCATION)	
LATITUDE = 32°12'42.79" (32.211885°)	
LONGITUDE = -103°41'04.11" (-103.684476°)	
STATE PLANE NAD 83 (N.M. EAST)	
N: 441467.71' E: 741864.73'	
STATE PLANE NAD 27 (N.M. EAST)	
N: 441408.95' E: 700680.36'	

NAD 83 (KICK OFF POINT)	
LATITUDE = 32°12'37.47" (32.210408°)	
LONGITUDE = -103°40'50.80" (-103.680776°)	
NAD 27 (KICK OFF POINT)	
LATITUDE = 32°12'37.02" (32.210284°)	
LONGITUDE = -103°40'49.07" (-103.680296°)	
STATE PLANE NAD 83 (N.M. EAST)	
N: 440893.21' E: 743160.93'	
STATE PLANE NAD 27 (N.M. EAST)	
N: 440834.47' E: 701976.54'	

NAD 83 (FIRST TAKE POINT)	
LATITUDE = 32°12'37.96" (32.210546°)	
LONGITUDE = -103°40'50.80" (-103.680777°)	
NAD 27 (FIRST TAKE POINT)	
LATITUDE = 32°12'37.52" (32.210422°)	
LONGITUDE = -103°40'49.07" (-103.680297°)	
STATE PLANE NAD 83 (N.M. EAST)	
N: 440943.20' E: 743160.43'	
STATE PLANE NAD 27 (N.M. EAST)	
N: 440884.45' E: 701976.04'	

NAD 83 (LEASE CROSSING)	
LATITUDE = 32°13'29.23" (32.224787°)	
LONGITUDE = -103°40'50.81" (-103.680779°)	
NAD 27 (LEASE CROSSING)	
LATITUDE = 32°13'28.79" (32.224664°)	
LONGITUDE = -103°40'49.07" (-103.680298°)	
STATE PLANE NAD 83 (N.M. EAST)	
N: 446124.19' E: 743128.26'	
STATE PLANE NAD 27 (N.M. EAST)	
N: 446065.32' E: 701944.08'	

NAD 83 (LAST TAKE POINT)	
LATITUDE = 32°14'20.49" (32.239026°)	
LONGITUDE = -103°40'50.81" (-103.680782°)	
NAD 27 (LAST TAKE POINT)	
LATITUDE = 32°14'20.05" (32.238903°)	
LONGITUDE = -103°40'49.08" (-103.680300°)	
STATE PLANE NAD 83 (N.M. EAST)	
N: 451304.20' E: 743096.08'	
STATE PLANE NAD 27 (N.M. EAST)	
N: 451245.20' E: 701912.12'	

NAD 83 (BOTTOM HOLE LOCATION)	
LATITUDE = 32°14'21.29" (32.239246°)	
LONGITUDE = -103°40'50.81" (-103.680782°)	
NAD 27 (BOTTOM HOLE LOCATION)	
LATITUDE = 32°14'20.84" (32.239123°)	
LONGITUDE = -103°40'49.08" (-103.680300°)	
STATE PLANE NAD 83 (N.M. EAST)	
N: 451384.18' E: 743095.64'	
STATE PLANE NAD 27 (N.M. EAST)	
N: 451325.19' E: 701911.68'	

District I
1625 N. French Dr., Hobbs, NM 88240
Phone: (575) 393-6161 Fax: (575) 393-0720
District II
811 S. First St., Artesia, NM 88210
Phone: (575) 748-1283 Fax: (575) 748-9720
District III
1000 Rio Brazos Road, Aztec, NM 87410
Phone: (505) 334-6178 Fax: (505) 334-6170
District IV
1220 S. St. Francis Dr., Santa Fe, NM 87505
Phone: (505) 476-3460 Fax: (505) 476-3462

State of New Mexico
Energy, Minerals & Natural Resources Department
OIL CONSERVATION DIVISION
1220 South St. Francis Dr.
Santa Fe, NM 87505

Form C-102
Revised August 1, 2011
Submit one copy to appropriate
District Office

☒ AMENDED REPORT

WELL LOCATION AND ACREAGE DEDICATION PLAT

¹ APT Number 30-025-48818	² Pool Code 96229	³ Pool Name MESA VERDE; BONE SPRING
⁴ Property Code 320828	⁵ Property Name MESA VERDE BS UNIT	⁶ Well Number 73H
⁷ OGRID No. 16696	⁸ Operator Name OXY USA INC.	⁹ Elevation 3567.0'

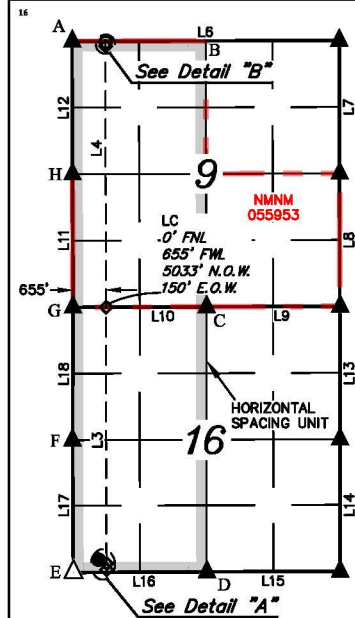
¹⁰ Surface Location

UL or lot no.	Section	Township	Range	Lot Idn	Feet from the	North/South line	Feet from the	East/West line	County
M	16	24S	32E		250	SOUTH	500	WEST	LEA

¹¹ Bottom Hole Location If Different From Surface

UL or lot no.	Section	Township	Range	Lot Idn	Feet from the	North/South line	Feet from the	East/West line	County
D	9	24S	32E		20	NORTH	660	WEST	LEA
¹² Dedicated Acres 640	¹³ Joint or Infill	¹⁴ Consolidation Code	¹⁵ Order No.						

No allowable will be assigned to this completion until all interests have been consolidated or a non-standard unit has been approved by the division.



LINE TABLE		
LINE	DIRECTION	LENGTH
L1	S38°57'02"E	256.38'
L2	N00°20'08"W	50.00'
L3	N00°06'57"W	5182.37'
L4	N00°06'57"W	5182.69'
L5	N00°04'48"W	80.00'
L6	S89°50'57"W	5306.47'
L7	N00°07'19"W	2638.74'
L8	N00°08'33"W	2640.00'
L9	S89°48'26"W	2650.31'

LINE TABLE		
LINE	DIRECTION	LENGTH
L10	S89°47'29"W	2652.40'
L11	N00°15'58"W	2642.02'
L12	N00°04'48"W	2641.34'
L13	N00°01'53"W	2640.80'
L14	N00°02'33"W	2638.33'
L15	S89°44'45"W	2649.45'
L16	S89°46'46"W	2650.96'
L17	N00°20'08"W	2641.25'
L18	N00°12'41"E	2641.33'

¹⁷ OPERATOR
CERTIFICATION

I hereby certify that the information contained herein is true and complete to the best of my knowledge and belief, and that this organization either owns a working interest or unleased mineral interest in the land including the proposed bottom hole location or has a right to drill this well at this location pursuant to a contract with an owner of such a mineral or working interest, or to a voluntary pooling agreement or a compulsory pooling order heretofore entered by the division.

Roni Mathew 12/5/2023

Signature Date

Roni Mathew

Printed Name

roni_mathew@oxy.com

E-mail Address

¹⁸ SURVEYOR
CERTIFICATION

I hereby certify that the well location shown on this plat was plotted from field notes of actual surveys made by me or under my supervision, and that the same is true and correct to the best of my belief.

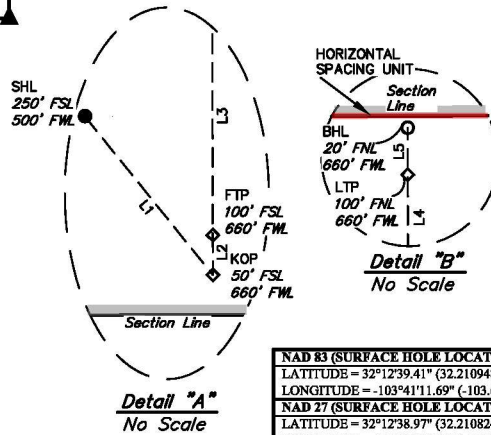
March 16, 2023

Date of Survey

Signature and Seal of Professional Surveyor:



Certificate Number:



NAD 83 (SURFACE HOLE LOCATION)

LATITUDE = 32°12'39.41" (32.210948°)
LONGITUDE = -103°41'11.69" (-103.686582°)

NAD 27 (SURFACE HOLE LOCATION)

LATITUDE = 32°12'38.97" (32.210824°)
LONGITUDE = -103°41'09.96" (-103.686101°)

STATE PLANE NAD 83 (N.M. EAST)

N: 441078.74' E: 741364.30'

STATE PLANE NAD 27 (N.M. EAST)

N: 441019.99' E: 700179.92'

NAD 83 (FIRST TAKE POINT)

LATITUDE = 32°12'37.93" (32.210537°)
LONGITUDE = -103°41'09.82" (-103.686062°)

NAD 27 (FIRST TAKE POINT)

LATITUDE = 32°12'37.49" (32.210413°)
LONGITUDE = -103°41'08.10" (-103.685582°)

STATE PLANE NAD 83 (N.M. EAST)

N: 440930.06' E: 741523.78'

STATE PLANE NAD 27 (N.M. EAST)

N: 440871.31' E: 700341.39'

NAD 83 (LAST TAKE POINT)

LATITUDE = 32°14'20.48" (32.239023°)
LONGITUDE = -103°41'09.83" (-103.686069°)

NAD 27 (LAST TAKE POINT)

LATITUDE = 32°14'20.04" (32.238899°)
LONGITUDE = -103°41'08.11" (-103.685587°)

STATE PLANE NAD 83 (N.M. EAST)

N: 451293.05' E: 741461.42'

STATE PLANE NAD 27 (N.M. EAST)

N: 451234.05' E: 700277.46'

NAD 83 (KICK OFF POINT)

LATITUDE = 32°12'37.44" (32.210399°)
LONGITUDE = -103°41'09.82" (-103.686062°)

NAD 27 (KICK OFF POINT)

LATITUDE = 32°12'36.99" (32.210275°)
LONGITUDE = -103°41'08.09" (-103.685581°)

STATE PLANE NAD 83 (N.M. EAST)

N: 440880.08' E: 741526.28'

STATE PLANE NAD 27 (N.M. EAST)

N: 440821.33' E: 700341.89'

NAD 83 (LEASE CROSSING)

LATITUDE = 32°13'29.21" (32.224779°)
LONGITUDE = -103°41'09.84" (-103.686066°)

NAD 27 (LEASE CROSSING)

LATITUDE = 32°13'28.76" (32.224656°)
LONGITUDE = -103°41'08.10" (-103.685584°)

STATE PLANE NAD 83 (N.M. EAST)

N: 446111.39' E: 741493.60'

STATE PLANE NAD 27 (N.M. EAST)

N: 446052.52' E: 700309.43'

NAD 83 (BOTTOM HOLE LOCATION)

LATITUDE = 32°14'21.27" (32.239243°)
LONGITUDE = -103°41'09.85" (-103.686069°)

NAD 27 (BOTTOM HOLE LOCATION)

LATITUDE = 32°14'20.83" (32.239119°)
LONGITUDE = -103°41'08.11" (-103.685587°)

STATE PLANE NAD 83 (N.M. EAST)

N: 451373.03' E: 741460.97'

STATE PLANE NAD 27 (N.M. EAST)

N: 451314.03' E: 700277.02'

- = SURFACE HOLE LOCATION
- ◆ = KICK OFF POINT/TAKE POINTS
- = LEASE CROSSING
- = BOTTOM HOLE LOCATION
- ▲ = SECTION CORNER LOCATED
- △ = SECTION CORNER RE-ESTABLISHED. (Not Set on Ground.)
- = LEASE LINE
- N.O.W. = NORTH OF WELL
- E.O.W. = EAST OF WELL



DRAWN BY: N.R. 03-22-23

REV: 1 09-20-23 C.D. (UPDATE WELLBORE)

HSU COORDINATES			
	NAD 27 N.M. STATE PLANE, EAST ZONE	NAD 83 N.M. STATE PLANE, EAST ZONE	
POINT	NORTHING	EASTING	
A	451329.52'	699617.04'	740800.99'
B	451347.63'	702269.73'	743453.69'
C	446068.16'	702306.74'	743490.92'
D	440787.34'	702332.91'	743517.31'
E	440766.04'	699682.53'	740866.92'
F	443406.61'	699656.11'	740840.39'
G	446047.39'	699654.91'	740839.08'
H	446088.77'	699631.68'	740815.74'

NOTE:

- Distances referenced on plat to section lines are perpendicular.
- Basis of Bearings is a Transverse Mercator Projection with a Central Meridian of W103°53'00" (NAD 83)
- Section breakdown information for this plat may be obtained from Uintah Engineering & Land Surveying.

District I
1625 N. French Dr., Hobbs, NM 88240
Phone: (575) 393-6161 Fax: (575) 393-0720
District II
811 S. First St., Artesia, NM 88210
Phone: (575) 748-1283 Fax: (575) 748-9720
District III
1000 Rio Brazos Road, Aztec, NM 87410
Phone: (505) 334-6178 Fax: (505) 334-6170
District IV
1220 S. St. Francis Dr., Santa Fe, NM 87505
Phone: (505) 476-3460 Fax: (505) 476-3462

State of New Mexico
Energy, Minerals & Natural Resources Department
OIL CONSERVATION DIVISION
1220 South St. Francis Dr.
Santa Fe, NM 87505

Form C-102
Revised August 1, 2011
Submit one copy to appropriate
District Office

☒ AMENDED REPORT

WELL LOCATION AND ACREAGE DEDICATION PLAT

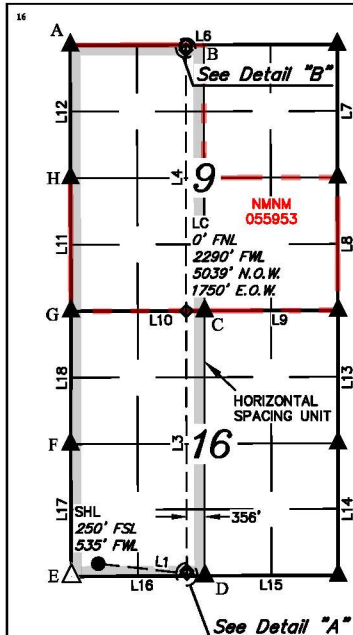
¹ API Number 30-025-48819	² Pool Code 96229	³ Pool Name MESA VERDE; BONE SPRING
⁴ Property Code 320828	⁵ Property Name MESA VERDE BS UNIT	⁶ Well Number 74H
⁷ OGRID No. 16696	⁸ Operator Name OXY USA INC.	⁹ Elevation 3568.3'

¹⁰ Surface Location									
UL or lot no. M	Section 16	Township 24S	Range 32E	Lot Idn	Feet from the 250	North/South line SOUTH	Feet from the 535	East/West line WEST	County LEA

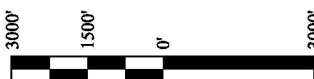
¹¹ Bottom Hole Location If Different From Surface

UL or lot no. C	Section 9	Township 24S	Range 32E	Lot Idn	Feet from the 20	North/South line NORTH	Feet from the 2295	East/West line WEST	County LEA
¹² Dedicated Acres 640	¹³ Joint or Infill	¹⁴ Consolidation Code	¹⁵ Order No.						

No allowable will be assigned to this completion until all interests have been consolidated or a non-standard unit has been approved by the division.



- = SURFACE HOLE LOCATION
- ◆ = KICK OFF POINT/TAKE POINTS
- = LEASE CROSSING
- = BOTTOM HOLE LOCATION
- ▲ = SECTION CORNER LOCATED
- △ = SECTION CORNER RE-ESTABLISHED. (Not Set on Ground.)
- = LEASE LINE
- N.O.W. = NORTH OF WELL
- E.O.W. = EAST OF WELL



DRAWN BY: N.R. 03-22-23

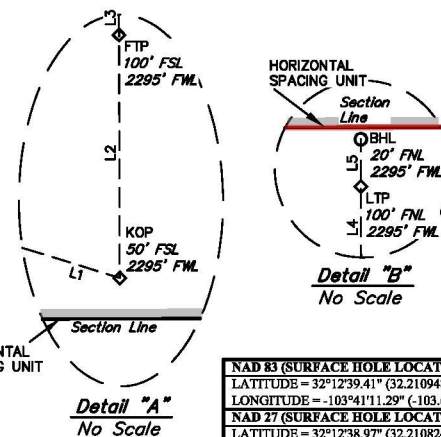
REV: 1 09-20-23 C.D. (UPDATE WELLBORE)

HSU COORDINATES			
	NAD 27 N.M. STATE PLANE, EAST ZONE	NAD 83 N.M. STATE PLANE, EAST ZONE	
POINT	NORTHING	EASTING	NORTHING
A	451329.52	699617.04	451388.52
B	451347.63	702269.73	451406.62
C	446068.16	702306.74	446127.03
D	440787.34	702332.91	440846.08
E	440766.04	699682.53	440824.79
F	443406.61	699656.11	443465.42
G	446047.39	699654.91	446106.27
H	446088.77	699631.68	446147.70
I	446088.77	699631.68	446147.70

NOTE:

- Distances referenced on plat to section lines are perpendicular.
- Basis of Bearings is a Transverse Mercator Projection with a Central Meridian of W103°53'00" (NAD 83)
- Section breakdown information for this plat may be obtained from Uintah Engineering & Land Surveying.

LINE TABLE			LINE TABLE		
LINE	DIRECTION	LENGTH	LINE	DIRECTION	LENGTH
L1	S83°44'20"E	1771.73'	L10	S89°47'29"W	2652.40'
L2	N00°20'08"W	50.00'	L11	N00°15'58"W	2642.02'
L3	N00°06'57"W	5182.03'	L12	N00°04'48"W	2641.34'
L4	N00°06'57"W	5181.04'	L13	N00°01'53"W	2640.80'
L5	N00°04'48"W	80.00'	L14	N00°02'33"W	2638.33'
L6	S89°50'57"W	5306.47'	L15	S89°44'45"W	2649.45'
L7	N00°07'19"W	2638.74'	L16	S89°46'46"W	2650.96'
L8	N00°08'33"W	2640.00'	L17	N00°20'08"W	2641.25'
L9	S89°48'26"W	2650.31'	L18	N00°12'41"E	2641.33'



NAD 83 (SURFACE HOLE LOCATION)	
LATITUDE = 32°12'39.41" (32.210948°)	
LONGITUDE = -103°41'11.29" (-103.686468°)	
NAD 27 (SURFACE HOLE LOCATION)	
LATITUDE = 32°12'38.97" (32.210824°)	
LONGITUDE = -103°41'09.56" (-103.685988°)	
STATE PLANE NAD 83 (N.M. EAST)	
N: 441079.03° E: 741399.30°	
STATE PLANE NAD 27 (N.M. EAST)	
N: 441020.27° E: 700214.92°	

NAD 83 (FIRST TAKE POINT)	
LATITUDE = 32°12'37.96" (32.210546°)	
LONGITUDE = -103°40'50.80" (-103.680777°)	
NAD 27 (FIRST TAKE POINT)	
LATITUDE = 32°12'37.52" (32.210422°)	
LONGITUDE = -103°40'49.07" (-103.680297°)	
STATE PLANE NAD 83 (N.M. EAST)	
N: 440943.20° E: 743160.43°	
STATE PLANE NAD 27 (N.M. EAST)	
N: 440884.45° E: 701976.04°	

NAD 83 (LAST TAKE POINT)	
LATITUDE = 32°14'20.49" (32.239026°)	
LONGITUDE = -103°40'50.81" (-103.680782°)	
NAD 27 (LAST TAKE POINT)	
LATITUDE = 32°14'20.05" (32.238903°)	
LONGITUDE = -103°40'49.08" (-103.680300°)	
STATE PLANE NAD 83 (N.M. EAST)	
N: 451304.20° E: 743096.08°	
STATE PLANE NAD 27 (N.M. EAST)	
N: 451245.20° E: 701912.12°	

¹⁷ OPERATOR CERTIFICATION

I hereby certify that the information contained herein is true and complete to the best of my knowledge and belief, and that this organization either owns a working interest or unleased mineral interest in the land including the proposed bottom hole location or has a right to drill this well at this location pursuant to a contract with an owner of such a mineral or working interest, or to a voluntary pooling agreement or a compulsory pooling order heretofore entered by the division.

Roni Mathew 12/5/2023
Signature Date

Roni Mathew
Printed Name

roni_mathew@oxy.com
E-mail Address

¹⁸ SURVEYOR CERTIFICATION

I hereby certify that the well location shown on this plat was plotted from field notes of actual surveys made by me or under my supervision, and that the same is true and correct to the best of my belief.

March 16, 2023
Date of Survey

Signature and Seal of Professional Surveyor:

Paul Buchele
23782
09-20-23
PAUL BUCHELE
NEW MEXICO
PROFESSIONAL SURVEYOR

Certificate Number:

NAD 83 (KICK OFF POINT)	
LATITUDE = 32°12'37.47" (32.210408°)	
LONGITUDE = -103°40'50.80" (-103.680776°)	
NAD 27 (KICK OFF POINT)	
LATITUDE = 32°12'37.02" (32.210284°)	
LONGITUDE = -103°40'49.07" (-103.680296°)	
STATE PLANE NAD 83 (N.M. EAST)	
N: 440893.21° E: 743160.93°	
STATE PLANE NAD 27 (N.M. EAST)	
N: 440834.47° E: 701976.54°	
NAD 83 (LEASE CROSSING)	
LATITUDE = 32°13'29.23" (32.224787°)	
LONGITUDE = -103°40'50.81" (-103.680779°)	
NAD 27 (LEASE CROSSING)	
LATITUDE = 32°13'28.79" (32.224664°)	
LONGITUDE = -103°40'49.07" (-103.680298°)	
STATE PLANE NAD 83 (N.M. EAST)	
N: 446124.19° E: 743128.26°	
STATE PLANE NAD 27 (N.M. EAST)	
N: 446065.32° E: 701944.08°	

NAD 83 (BOTTOM HOLE LOCATION)	
LATITUDE = 32°14'21.29" (32.239246°)	
LONGITUDE = -103°40'50.81" (-103.680782°)	
NAD 27 (BOTTOM HOLE LOCATION)	
LATITUDE = 32°14'20.84" (32.239123°)	
LONGITUDE = -103°40'49.08" (-103.680300°)	
STATE PLANE NAD 83 (N.M. EAST)	
N: 451384.18° E: 743095.64°	
STATE PLANE NAD 27 (N.M. EAST)	
N: 451325.19° E: 701911.68°	

Sante Fe Main Office
Phone: (505) 476-3441

General Information
Phone: (505) 629-6116

Online Phone Directory
<https://www.emnrd.nm.gov/ocd/contact-us>

State of New Mexico
Energy, Minerals and Natural Resources
Oil Conservation Division
1220 S. St Francis Dr.
Santa Fe, NM 87505

CONDITIONS

Action 410415

CONDITIONS

Operator: OXY USA INC P.O. Box 4294 Houston, TX 772104294	OGRID: 16696
	Action Number: 410415
	Action Type: [C-103] NOI General Sundry (C-103X)

CONDITIONS

Created By	Condition	Condition Date
dmcclure	Please review the content of the order to ensure you are familiar with the authorities granted and any conditions of approval. If you have any questions regarding this matter, please contact me.	12/19/2024