

Office
 District I – (575) 393-6161
 1625 N. French Dr., Hobbs, NM 88240
 District II – (575) 748-1283
 811 S. First St., Artesia, NM 88210
 District III – (505) 334-6178
 1000 Rio Brazos Rd., Aztec, NM 87410
 District IV – (505) 476-3460
 1220 S. St. Francis Dr., Santa Fe, NM
 87505

State of New Mexico
 Energy, Minerals and Natural Resources

Form C-103
 Revised July 18, 2013

OIL CONSERVATION DIVISION
 1220 South St. Francis Dr.
 Santa Fe, NM 87505

WELL API NO. 30-045-08335
5. Indicate Type of Lease STATE <input type="checkbox"/> FEE <input type="checkbox"/>
6. State Oil & Gas Lease No.
7. Lease Name or Unit Agreement Name Marsrow Gas Com
8. Well Number 1
9. OGRID Number
10. Pool name or Wildcat Basin Dakota

SUNDRY NOTICES AND REPORTS ON WELLS (DO NOT USE THIS FORM FOR PROPOSALS TO DRILL OR TO DEEPEN OR PLUG BACK TO A DIFFERENT RESERVOIR. USE "APPLICATION FOR PERMIT" (FORM C-101) FOR SUCH PROPOSALS.)	
1. Type of Well: Oil Well <input type="checkbox"/> Gas Well <input checked="" type="checkbox"/> Other	
2. Name of Operator SIMCOE LLC	
3. Address of Operator 1199 Main Ave, Suite 101, Durango, CO 81301	
4. Well Location Unit Letter <u>F</u> : <u>1850</u> feet from the <u>North</u> line and <u>1850</u> feet from the <u>West</u> line Section <u>15</u> Township <u>29N</u> Range <u>2W</u> NMPM San Juan County	
11. Elevation (Show whether DR, RKB, RT, GR, etc.) 5,585', GL	

12. Check Appropriate Box to Indicate Nature of Notice, Report or Other Data

NOTICE OF INTENTION TO: PERFORM REMEDIAL WORK <input type="checkbox"/> PLUG AND ABANDON <input type="checkbox"/> TEMPORARILY ABANDON <input type="checkbox"/> CHANGE PLANS <input type="checkbox"/> PULL OR ALTER CASING <input type="checkbox"/> MULTIPLE COMPL <input type="checkbox"/> DOWNHOLE COMMINGLE <input type="checkbox"/> CLOSED-LOOP SYSTEM <input type="checkbox"/> OTHER: <input type="checkbox"/>	SUBSEQUENT REPORT OF: REMEDIAL WORK <input type="checkbox"/> ALTERING CASING <input type="checkbox"/> COMMENCE DRILLING OPNS. <input type="checkbox"/> P AND A <input type="checkbox"/> CASING/CEMENT JOB <input type="checkbox"/> OTHER: Bradenhead Repair Results SR <input checked="" type="checkbox"/>
--	---

13. Describe proposed or completed operations. (Clearly state all pertinent details, and give pertinent dates, including estimated date of starting any proposed work). SEE RULE 19.15.7.14 NMAC. For Multiple Completions: Attach wellbore diagram of proposed completion or recompletion.

11/8/24 – BH 165 psi, casing 108 psi. MIRU service rig. Pressure tested tubing to 500 psi, held good. POOH rods/pump. NDWH, NUBOP.
 11/11/24 – BH 165 psi, casing 110 psi. POOH production tubing. Round tripped 4.5" casing scraper to 6065'. RIH 4.5" RBP, set at 67'. Pressure tested to 300 psi, lost 100 psi in 1 min due to bad set. RIH RBP and set at 6025'. Rolled the hole w/ 80 bbl fluid. Attempted to pressure test but gained 60 psi due to temperature.
 11/12/24 – BH 33 psi, casing 33 psi. POOH tubing. RU WL, ran CBL from 6025' to surface. Send in to NMOCD. Pressure tested casing to 560 psi, lost 9 psi in 15 minutes. NMOCD requested to set packer at 67' and test casing above. Pressure tested casing to 356 psi (approved by Thomas Vermesch). Lost 12 psi in 15 minutes. NMOCD requested POOH packer and test entire wellbore. POOH packer. Pressured up wellbore to 390 psi overnight.
 11/13/24 – BH 19 psi, casing 382 psi. Opened up bradenhead valve with casing shut in, no pressure change on casing. RIH packer, set at 68', pressured up casing below to 566 psi for 30 minutes. Lost 6 psi in 30 minutes. Received verbal approval from NMOCD on casing test. Engineer and NMOCD decided to perf at 1320' and squeeze. RIH and retrieved RBP at 6025'. POOH RBP.
 11/14/24 – BH 14 psi, casing 0 psi. Set 4.5" 10K CIBP at 1375'. POOH tubing. RU WL, perf 4 – 0.38" holes at 1320'. RD WL. Establish injection rate into squeeze holes at 0.5 BPM at 1200 psi. RIH CR, set at 1280'. Pumped 66 sx #15.8, 1.15 yield Class G cement at 0.7 BPM and 1540 psi. Squeezed 13 bbls behind casing. Stung out of CR, reversed 0.25 bbl back. POOH tubing.
 11/15/24 – BH 9 psi, casing 0 psi. RU WL, ran CBL from 1270' to surface.
 11/18/24 – BH 25 psi, casing 0 psi. PU mill and drill collars, tagged cement at 1274'. Drilled out cement and CR. Pressure tested squeeze holes and casing to 526 psi, lost 87 psi in 15 minutes. POOH tubing.
 11/19/24 – BH 12 psi, casing 0 psi. RIH packer, set at 1302', tested below to 439 psi, lost 8 psi/min. Tested casing above to surface at 536 psi, held good. Established injection rate into squeeze holes at less than 0.5 BPM at 1450 psi. Reset packer below squeeze holes to test CIBP, pressured to 426 psi, held good. POOH packer. RIH w/ tubing to 1338'. Spotted 20 sx #14.6, 1.39 yield Type 3 cement balanced plug. POOH 6 stands, reserved cleaned. POOH tubing. Hesitated the squeeze up to 1750 psi for 2 hours, got 0.5 bbl behind pipe.
 11/20/24 – BH 14 psi, casing 0 psi. RIH bit, tagged cement at 1003'. Drilled out to 1168'. POOH and run new bit. Drilled to 1200'.
 11/21/24 – BH 21 psi, casing 0 psi. Drilled out from 1200-1340'. Pressure tested casing to 547 psi. POOH tubing
 11/22/24 – BH 20 psi, casing 0 psi. Conducted MIT. Pressured up wellbore to 560 psi for 42 minutes, flatlined at 545 psi. Received verbal approval from NMOCD via text message since NMOCD was unavailable to witness. Drilled out CIBP at 1375', chased to bottom at 6220'. POOH
 11/25/24 – Bradenhead 34 psi, casing 0 psi. RIH production tubing. NDBOP, NUWH. RIH pump/rods. RDMO

Spud Date:

Rig Release Date:

I hereby certify that the information above is true and complete to the best of my knowledge and belief.

SIGNATURE Christy Kost TITLE Regulatory Analyst DATE 12/4/2024

Type or print name Christy Kost E-mail address: christy.kost@ikavenergy.com PHONE: 970-822-8931

For State Use Only

APPROVED BY: _____ TITLE _____ DATE _____

Conditions of Approval (if any):

MARSROW GC 001 – 3004508335

SEC 15 T29N R12W 1850' FNL 1850' FWL

SAN JUAN COUNTY NM

11/8/24 – BH 165 psi, casing 108 psi. MIRU service rig. Pressure tested tubing to 500 psi, held good. POOH rods/pump. NDWH, NUBOP.

11/11/24 – BH 165 psi, casing 110 psi. POOH production tubing. Round tripped 4.5" casing scraper to 6065'. RIH 4.5" RBP, set at 67'. Pressure tested to 300 psi, lost 100 psi in 1 min due to bad set. RIH RBP and set at 6025'. Rolled the hole w/ 80 bbl fluid. Attempted to pressure test but gained 60 psi due to temperature.

11/12/24 – BH 33 psi, casing 33 psi. POOH tubing. RU WL, run CBL from 6025' to surface. Send in to NMOCD. Pressure tested casing to 560 psi, lost 9 psi in 15 minutes. NMOCD requested to set packer at 67' and test casing above. Pressure tested casing to 356 psi (approved by Thomas Vermesch). Lost 12 psi in 15 minutes. NMOCD requested POOH packer and test entire wellbore. POOH packer. Pressured up wellbore to 390 psi overnight.

11/13/24 – BH 19 psi, casing 382 psi. Opened up bradenhead valve with casing shut in, no pressure change on casing. RIH packer, set at 68', pressured up casing below to 566 psi for 30 minutes. Lost 6 psi in 30 minutes. Received verbal approval from NMOCD on casing test. Engineer and NMOCD decided to perf at 1320' and squeeze. RIH and retrieved RBP at 6025'. POOH RBP.

11/14/24 – BH 14 psi, casing 0 psi. Set 4.5" 10K CIBP at 1375'. POOH tubing. RU WL, perf 4 – 0.38" holes at 1320'. RD WL. Establish injection rate into squeeze holes at 0.5 BPM at 1200 psi. RIH CR, set at 1280'. Pumped 66 sx #15.8, 1.15 yield Class G cement at 0.7 BPM and 1540 psi. Squeezed 13 bbls behind casing. Stung out of CR, reversed 0.25 bbl back. POOH tubing.

11/15/24 – BH 9 psi, casing 0 psi. RU WL, ran CBL from 1270' to surface.

11/18/24 – BH 25 psi, casing 0 psi. PU mill and drill collars, tagged cement at 1274'. Drilled out cement and CR. Pressure tested squeeze holes and casing to 526 psi, lost 87 psi in 15 minutes. POOH tubing.

11/19/24 – BH 12 psi, casing 0 psi. RIH packer, set at 1302', tested below to 439 psi, lost 8 psi/min. Tested casing above to surface at 536 psi, held good. Established injection rate into squeeze holes at less than 0.5 BPM at 1450 psi. Reset packer below squeeze holes to test CIBP, pressured to 426 psi, held good. POOH packer. RIH w/ tubing to 1338'. Spotted

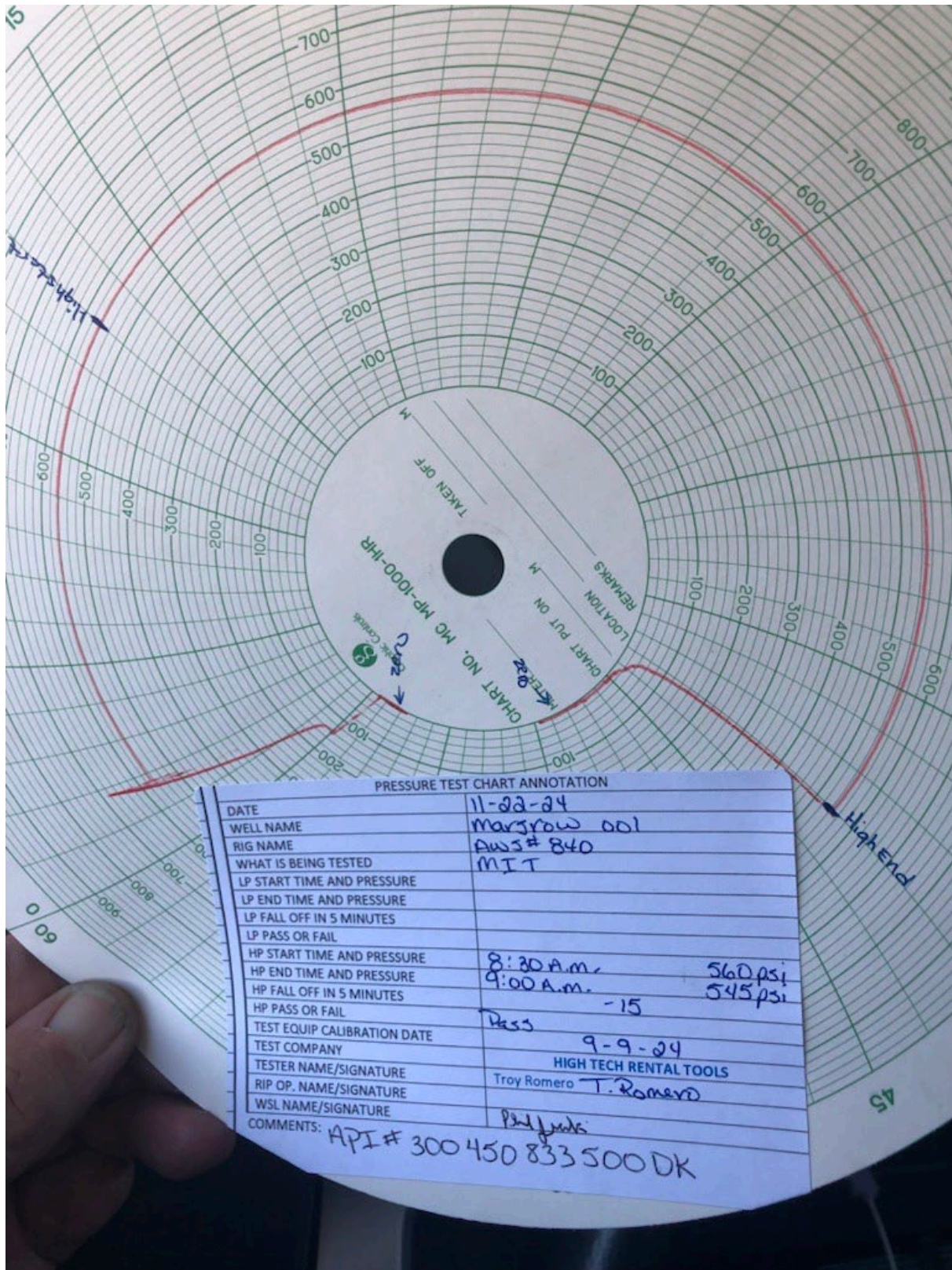
20 sx #14.6, 1.39 yield Type 3 cement balanced plug. POOH 6 stands, reserved cleaned. POOH tubing. Hesitated the squeeze up to 1750 psi for 2 hours, got 0.5 bbl behind pipe.

11/20/24 – BH 14 psi, casing 0 psi. RIH bit, tagged cement at 1003'. Drilled out to 1168'. POOH and run new bit. Drilled to 1200'.

11/21/24 – BH 21 psi, casing 0 psi. Drilled out from 1200-1340'. Pressure tested casing to 547 psi. POOH tubing

11/22/24 – BH 20 psi, casing 0 psi. Conducted MIT. Pressured up wellbore to 560 psi for 42 minutes, flatlined at 545 psi. Received verbal approval from NMOCD via text message since NMOCD was unavailable to witness. Drilled out CIBP at 1375', chased to bottom at 6220'. POOH

11/25/24 – Bradenhead 34 psi, casing 0 psi. RIH production tubing. NDBOP, NUWH. RIH pump/rods. RDMO



Marsrow GC 01

Dakota

API # 30-045-08335

Sec. 15, T29N, R12W

1850' FNL x 1850' FWL

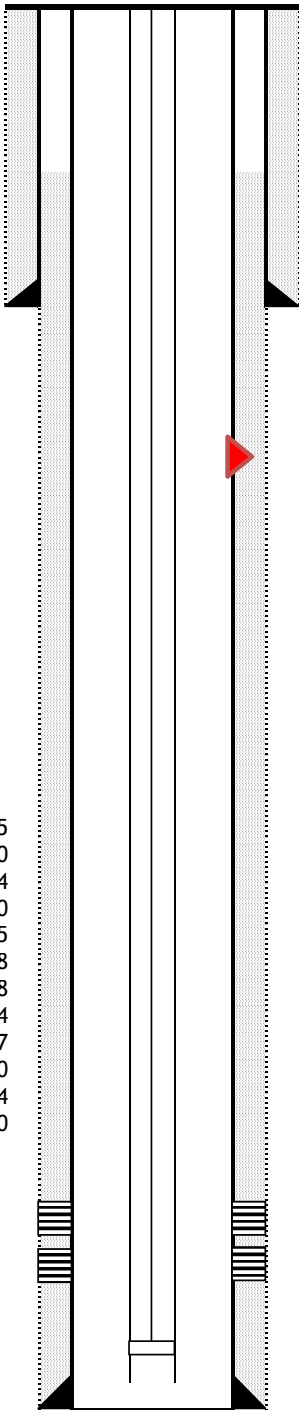
San Juan County, New Mexico

GL: 5573'

KB: 5585'

Formation Tops

Kirtland-Fruitland Sand and Shale	358-1610
Pictured Cliffs Sand and Shale	1610-1775
Lewis Shale	1775-3190
Mesaverde Sand and Shale	3190-4314
Mancos Shale	4314-5230
Gallup Sand and Shale	5230-5575
Mancos Shale	5575-5968
Greenhorn Shale	5968-6028
Graneros Shale	6028-6074
Graneros Dakota Pay Sand	6074-6087
Dakota Sand and Shale	6087-6150
Main Dakota Pay Sand	6150-6174
Dakota Sand and Shale	6174-6240



12-1/4" Hole
8-5/8", 24.0# @ 358'
Cmt w/ 200 sks Quixtrench neat cmt w/ 2% CaCl
TOC @ Surface

Squeeze holes at 1320'

3/4" Rods (btm 10 guided)
4-1.25" Sinker Bars
2"x1.25"x14' RHAC

F nipple @ 6192'
EOT @ 6212'

Dakota Perforations

6075-6087' @ 4SPF
Fracd w/ 34,770 gal. H2O w/ 2.5 lbs/1000 gal. FR-2
28,500 lbs. sand

6154-6170' @ 2SPF
Fracd w/ 40,000 gal. H2O w/ 1% CaCl, 2.5 lbs/1000 gal. FR-2
40,000 lbs. sand

7-7/8" Hole
4-1/2", 10.5# @ 6237'
Cmt: 1st stage w/ 55U sks Quixtrench w/ 4% gel, 1.5 lbs/sk tut plug
Tailed w/ 100 sks Quixtrench neat cmt.

Sante Fe Main Office
Phone: (505) 476-3441

General Information
Phone: (505) 629-6116

Online Phone Directory
<https://www.emnrd.nm.gov/ocd/contact-us>

State of New Mexico
Energy, Minerals and Natural Resources
Oil Conservation Division
1220 S. St Francis Dr.
Santa Fe, NM 87505

CONDITIONS

Action 408498

CONDITIONS

Operator: SIMCOE LLC 1199 Main Ave., Suite 101 Durango, CO 81301	OGRID: 329736
	Action Number: 408498
	Action Type: [C-103] Sub. General Sundry (C-103Z)

CONDITIONS

Created By	Condition	Condition Date
mkuehling	this well was produced to a pit once rig work was performed - a bradenhead test was performed and witnessed at 30 days after rig move- a bradenhead test is still required at 6 month after rig move and 1 year after rig move once 1 year test performed and witnessed it will then be decided if compliance can be cleared.	1/21/2025