

Submit a Copy To Appropriate District Office
 District I – (575) 393-6161
 1625 N. French Dr., Hobbs, NM 88240
 District II – (575) 748-1283
 811 S. First St., Artesia, NM 88210
 District III – (505) 334-6178
 1000 Rio Brazos Rd., Aztec, NM 87410
 District IV – (505) 476-3460
 1220 S. St. Francis Dr., Santa Fe, NM 87505

State of New Mexico
 Energy, Minerals and Natural Resources

Form C-103
 Revised July 18, 2013

OIL CONSERVATION DIVISION
 1220 South St. Francis Dr.
 Santa Fe, NM 87505

WELL API NO. 30-045-34658
5. Indicate Type of Lease STATE <input checked="" type="checkbox"/> FEE <input type="checkbox"/>
6. State Oil & Gas Lease No. E-178
7. Lease Name or Unit Agreement Name Northeast Blanco Unit
8. Well Number 354
9. OGRID Number 000778
10. Pool name or Wildcat Basin Dakota, Basin Mancos

SUNDRY NOTICES AND REPORTS ON WELLS (DO NOT USE THIS FORM FOR PROPOSALS TO DRILL OR TO DEEPEN OR PLUG BACK TO A DIFFERENT RESERVOIR. USE "APPLICATION FOR PERMIT" (FORM C-101) FOR SUCH PROPOSALS.)	
1. Type of Well: Oil Well <input type="checkbox"/> Gas Well <input checked="" type="checkbox"/> Other <input type="checkbox"/>	
2. Name of Operator SIMCOE LLC	
3. Address of Operator 1199 Main Ave, Suite 101, Durango, CO 81301	
4. Well Location Unit Letter <u>J</u> : <u>1690</u> feet from the <u>South</u> line and <u>1790</u> feet from the <u>East</u> line Section <u>32</u> Township <u>31N</u> Range <u>07W</u> NMPM County <u>San Juan</u>	
11. Elevation (Show whether DR, RKB, RT, GR, etc.) 6,318', GL	

12. Check Appropriate Box to Indicate Nature of Notice, Report or Other Data

NOTICE OF INTENTION TO: PERFORM REMEDIAL WORK <input type="checkbox"/> PLUG AND ABANDON <input type="checkbox"/> TEMPORARILY ABANDON <input checked="" type="checkbox"/> CHANGE PLANS <input type="checkbox"/> PULL OR ALTER CASING <input type="checkbox"/> MULTIPLE COMPL <input type="checkbox"/> DOWNHOLE COMMINGLE <input type="checkbox"/> CLOSED-LOOP SYSTEM <input type="checkbox"/> OTHER: <input type="checkbox"/>	SUBSEQUENT REPORT OF: REMEDIAL WORK <input type="checkbox"/> ALTERING CASING <input type="checkbox"/> COMMENCE DRILLING OPNS. <input type="checkbox"/> P AND A <input type="checkbox"/> CASING/CEMENT JOB <input type="checkbox"/> OTHER: <input type="checkbox"/>
---	---

13. Describe proposed or completed operations. (Clearly state all pertinent details, and give pertinent dates, including estimated date of starting any proposed work). SEE RULE 19.15.7.14 NMAC. For Multiple Completions: Attach wellbore diagram of proposed completion or recompletion.

This is a POW. Under the BLM, it will maintain the POW status indefinitely; the BLM does not require an NOI for this work.

MIRU service unit. ND WH and NU BOP.

NOTE: Will need to arrange for workstring, tubing not in well

PU Workstring and TIH 3-1/2" casing scraper to 6750'

RIH 3-1/2" cast iron bridge plug and set at 6700'

Top off casing with 2% KCl w/packer fluid supplied by Western Chemical.

Pressure test casing to 500 psi for 30 min with rig pump. Pressure shall not decrease more than 50 psi over the 30 min period

Open casing valves to check for flow or pressure change.

Test shall be recorded using a chart recorder with a maximum two hour clock and 1000 pound spring, calibrated within six months prior to MIT of casing

Submit chart, C-103, and wellbore diagram showing well details and plug set depth.

Air gap and blind flange production flow lines.

After a period not to exceed 5 years after the temporary abandonment has been completed, a workover rig will remove the cast iron bridge plug and monitor pressure buildup of the well for a two week period to determine if the well will return to a production status.

If the decision is made to not produce the well, a request for plugging and abandonment will be submitted. If the decision is made to produce the well, all necessary flow and production lines will be reinstalled for a flow ready status up to and including any removed flowmeters and well ties. Surface facilities will be placed for production purposes.

Spud Date:

Rig Release Date:

I hereby certify that the information above is true and complete to the best of my knowledge and belief.

SIGNATURE Christy Kost TITLE Regulatory Analyst DATE 1/17/25

Type or print name Christy Kost E-mail address: christy.kost@ikavenergy.com PHONE: 970-822-8931

For State Use Only

APPROVED BY: _____ TITLE _____ DATE _____

Conditions of Approval (if any):

Procedure - Temporary Abandonment

NEBU #354

(J) Sec 32, T31N, R7W

San Juan County

30-045-34658

MIRU service unit. ND WH and NU BOP.

NOTE: Will need to arrange for workstring, tubing not in well

PU Workstring and TIH 3-1/2" casing scraper to 6750'

RIH 3-1/2" cast iron bridge plug and set at 6700'

Top off casing with 2% KCl w/packer fluid supplied by Western Chemical.

Pressure test casing to 500 psi for 30 min with rig pump. Pressure shall not decrease more than 50 psi over the 30 min period

Open casing valves to check for flow or pressure change.

Test shall be recorded using a chart recorder with a maximum two hour clock and 1000 pound spring, calibrated within six months prior to MIT of casing

Submit chart, C-103, and wellbore diagram showing well details and plug set depth.

Air gap and blind flange production flow lines.

After a period not to exceed 5 years after the temporary abandonment has been completed, a workover rig will remove the cast iron bridge plug and monitor pressure buildup of the well for a two week period to determine if the well will return to a production status. If the decision is made to not produce the well, a request for plugging and abandonment will be submitted.

If the decision is made to produce the well, all necessary flow and production lines will be reinstalled for a flow ready status up to and including any removed flowmeters and well ties. Surface facilities will be placed for production purposes.

NERU 055F
 API #: 30-045-34658
 J-32-31N-07W
 San Juan, NM

Current Wellbore

GL: 6318'

San Jose Surface

Ojo Alamo Formation 2152'

Kirtland-Fruitland Formation 2741'

Pictured Cliffs Formation 3226'

Cliffhouse Formation 5114'

Menefee Formation 5200'

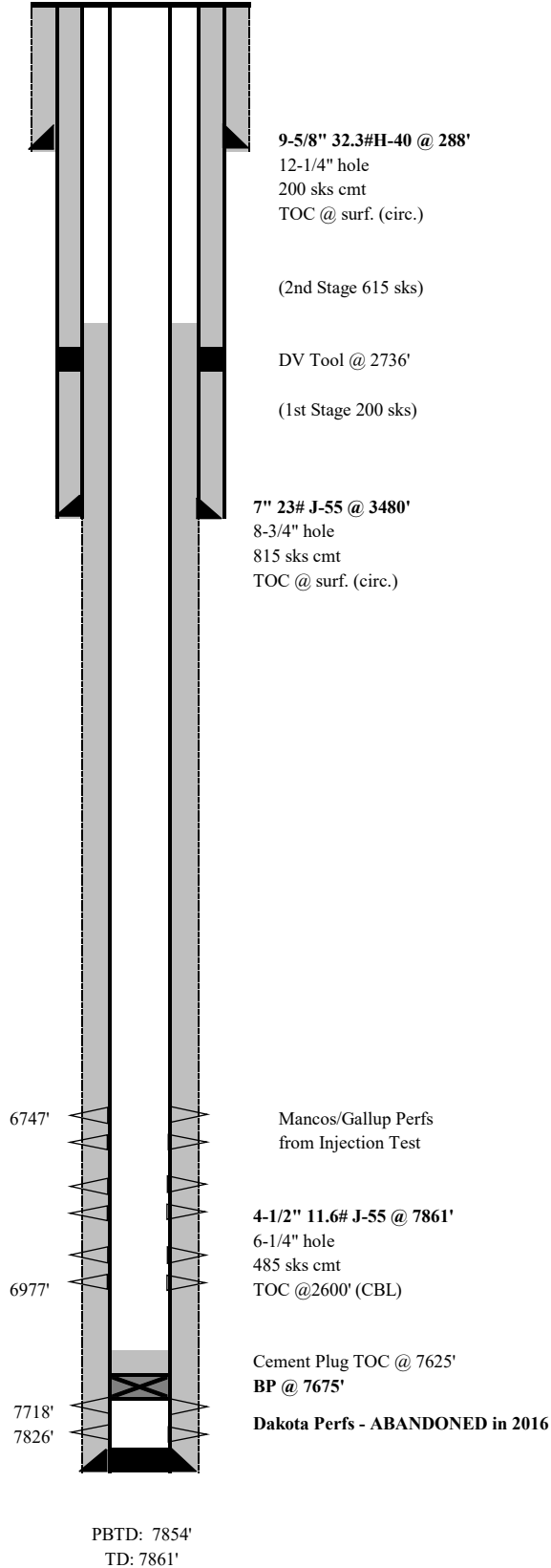
Point Lookout Formation 5450'

Mancos Formation 5860'

Gallup Formation 6825'

Base Greenhorn 7522'

Dakota Formation 7885'



NEBU 055E
DK
API #: 30-045-34658
J-32-31N-07W
San Juan, NM

Planned Temporary Abandonment

San Jose Surface

GL: 6318'

Ojo Alamo Formation 2152'

Kirtland-Fruitland Formation 2741'

Pictured Cliffs Formation 3226'

Cliffhouse Formation 5114'

Menefee Formation 5200'

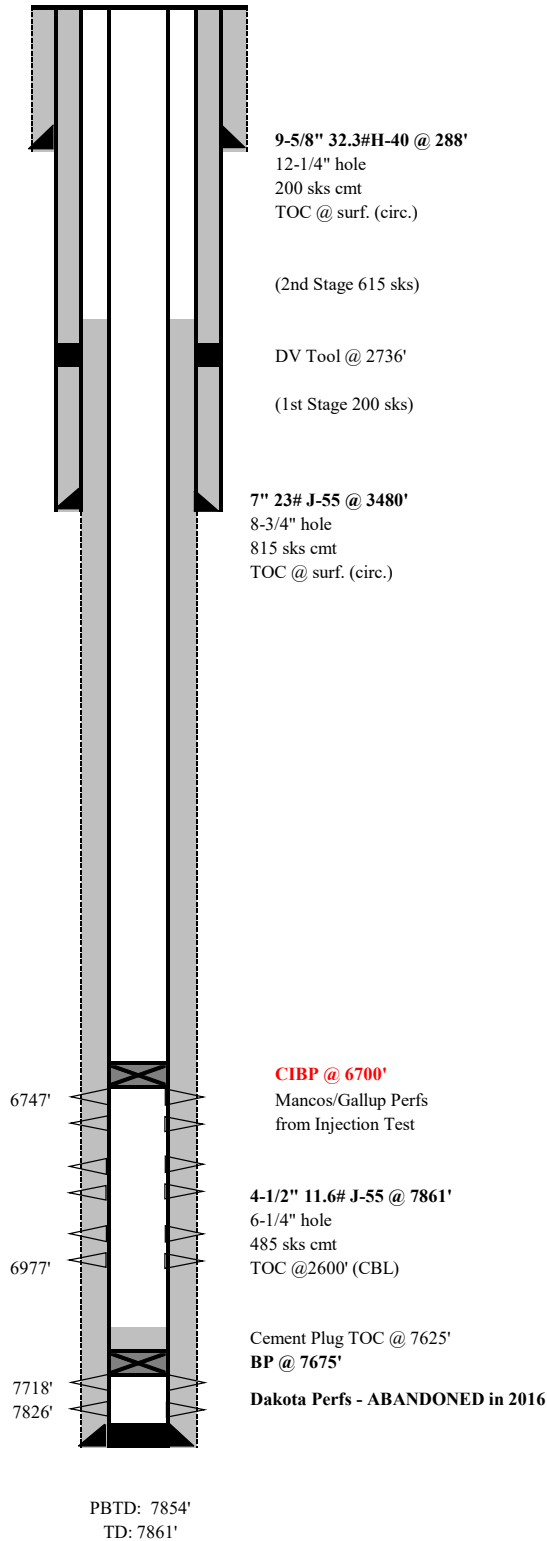
Point Lookout Formation 5450'

Mancos Formation 5860'

Gallup Formation 6825'

Base Greenhorn 7522'

Dakota Formation 7885'



Sante Fe Main Office
Phone: (505) 476-3441

General Information
Phone: (505) 629-6116

Online Phone Directory
<https://www.emnrd.nm.gov/ocd/contact-us>

State of New Mexico
Energy, Minerals and Natural Resources
Oil Conservation Division
1220 S. St Francis Dr.
Santa Fe, NM 87505

CONDITIONS

Action 422044

CONDITIONS

Operator: SIMCOE LLC 1199 Main Ave., Suite 101 Durango, CO 81301	OGRID: 329736
	Action Number: 422044
	Action Type: [C-103] NOI Temporary Abandonment (C-103I)

CONDITIONS

Created By	Condition	Condition Date
mkuehling	The Dakota perforations have been plugged back but not the top of the Graneros - there is 101 feet between the bottom of the Mancos perforations and the top of the Gallup perforations - thus when this well goes to plugging - top of the Graneros will have to be covered and a plug will have to be put at the top of the Gallup prior to putting a plug above the Mancos perforations. Notify NMOCD 24 hours prior to moving on - monitor string pressures daily - bradenhead test required prior to MIT day of MIT - Test pressure on MIT cannot drop below 500 psi on a TA'd well.	1/21/2025
mkuehling	Notify this office if decision is made in 5 years to produce	1/21/2025