

Well Name: SAN JUAN 29-7 UNIT	Well Location: T29N / R7W / SEC 5 / NESW / 36.75174 / -107.596963	County or Parish/State: RIO ARRIBA / NM
Well Number: 79B	Type of Well: CONVENTIONAL GAS WELL	Allottee or Tribe Name:
Lease Number: NMSF078951	Unit or CA Name: SAN JUAN 29-7 UNIT--DK, SAN JUAN 29-7 UNIT--MV	Unit or CA Number: NMNM78417A, NMNM78417B
US Well Number: 3003926222	Well Status: Producing Gas Well	Operator: HILCORP ENERGY COMPANY

Subsequent Report

Sundry ID: 2773576

Type of Submission: Subsequent Report

Date Sundry Submitted: 02/06/2024

Date Operation Actually Began: 01/09/2024

Type of Action: Workover Operations

Time Sundry Submitted: 08:25

Actual Procedure: Hilcorp Energy repaired the wellhead & BH, INT valves per the attached summary report.

SR Attachments

Actual Procedure

sAN_JUAN_29_7_UNIT_79B_BH_INT_Repair_Subsequent_20240206082420.pdf

Well Name: SAN JUAN 29-7 UNIT	Well Location: T29N / R7W / SEC 5 / NESW / 36.75174 / -107.596963	County or Parish/State: RIO ARRIBA / NM
Well Number: 79B	Type of Well: CONVENTIONAL GAS WELL	Allottee or Tribe Name:
Lease Number: NMSF078951	Unit or CA Name: SAN JUAN 29-7 UNIT--DK, SAN JUAN 29-7 UNIT--MV	Unit or CA Number: NMNM78417A, NMNM78417B
US Well Number: 3003926222	Well Status: Producing Gas Well	Operator: HILCORP ENERGY COMPANY

Operator

I certify that the foregoing is true and correct. Title 18 U.S.C. Section 1001 and Title 43 U.S.C. Section 1212, make it a crime for any person knowingly and willfully to make to any department or agency of the United States any false, fictitious or fraudulent statements or representations as to any matter within its jurisdiction. Electronic submission of Sundry Notices through this system satisfies regulations requiring a

Operator Electronic Signature: TAMMY JONES

Signed on: FEB 06, 2024 08:25 AM

Name: HILCORP ENERGY COMPANY

Title: Regulatory Compliance Specialist

Street Address: 382 ROAD 3100

City: AZTECState: NM

Phone: (505) 324-5185

Email address: TAJONES@HILCORP.COM

Field

Representative Name:

Street Address:

City:State:Zip:

Phone:

Email address:

BLM Point of Contact

BLM POC Name: MATTHEW H KADE

BLM POC Title: Petroleum Engineer

BLM POC Phone: 5055647736

BLM POC Email Address: MKADE@BLM.GOV

Disposition: Accepted

Disposition Date: 02/06/2024

Signature: Matthew Kade

SAN JUAN 29-7 UNIT 79B

30.039.26222

WELLHEAD REPAIR

1/9/2024 – MIRU. CK PRESSURES. SITP = 55 PSI, SICP = 55 PSI, SIICP = 55 PSI, SIBHP = 0 PSI. B/D WELL. ND WH. NU BOP, TEST & FUNCTION - GOOD. UNSET TBG HANGER, LD HNGR. WORKING TBG. START AIR/MIST @ 8 to 10 BPH & 550 PSI TO 950 PSI. CONTINUE TO WORK TBG. SHUTDOWN AIR/MIST UNIT. SET SLIPS. SIW. SDFN.

1/10/2024 – CK PRESSURES. SITP = 100 PSI, SICP = 100 PSI, SIICP = 100 PSI, SIBHP = 0 PSI. B/D WELL. PROD TBG DID NOT COME FREE OVERNIGHT. CONTINUE WORKING TBG STRING. MOVE IN 3/4" ROD STRING. PU 84- 3/4" RODS WITH BOX COUPLING ON BOTTOM. SCREWED INTO ROD STRING. START WORKING ROD STRING., PULLED ROD STRING UP TO 35K. STRING PARTED AFTER LAYING DOWN 3- RODS (75'). LAYDOWN PARTED ROD. PARTED IN BODY. MAKE UP 3/4" ROD GRAPPLE. RUN INTO WELL AND LATCHED ONTO ROD STRING AT 90'. PULLED 15K ONTO STRING. INSTALLED POLISHED ROD ASSEMBLY. SHUT IN, SECURE WELL.

1/11/2024 – CK PRESSURES. SITP = 100 PSI, SICP = 100 PSI, SIICP = 100 PSI, SIBHP = 0 PSI. B/D WELL. PUMP 30 BBLS HOT WTR DOWN 5-1/2" CSG, PUMP 20 BBLS HOT WTR DOWN ROD/TBG ANNULUS. CONTINUE TO WORK ROD STRING TO 35K. PUMP ADDITIONAL 70 BBLS HOT WTR DOWN 5-1/2" CSG. CONTINUE WORKING ROD STRING. LAID DOWN 1 ROD. DECISION MADE BY HEC ENGINEERING TO PUMP 15% HCL DOWN CSG. PREPARE FOR ACID TREATMENT. PULL 15K OVER STRING WEIGHT INTO TBG. WAIT ON CREEDENCE ENERGY SERVICES. MIRU CREEDENCE. PUMP 51 GALS OF PB-4 SOLVENT, FOLLOW WITH 253 GALS OF C-ACI-110X ACID, FLUSH WITH 25 GALS OF KCL WTR. SIW. SDFN.

1/12/2024 – CK PRESSURES. SITP = 100 PSI, SICP = 100 PSI, SIICP = 100 PSI, SIBHP = 0 PSI. B/D WELL. TBG STRING DID NOT COME FREE OVERNIGHT. TRY TO WORK TBG STRING TO 55K. NOT MAKING PROGRESS. CONTINUE TO WORK ROD STRING TO 35K. MANUAL BACK OFF ON RODS, BACKED OFF 17- RODS ON 1ST ATTEMPT. RUN BACK INTO WELL & ABLE TO RECONNECT ROD STRING. WORKED ROD STRING TO 35K. BACKED OFF RODS AGAIN & GAINED SOME ADDITIONAL ROD STRING WEIGHT. INSTALL TBG HNGR & RELAND TBG INTO WELL. R/D FLOOR & TBG TOOLS. N/U W/H ASSM. TRIP OUT LAYING DOWN 3/4" RODS. LAYDOWN 84- 3/4" RODS. RECOVERED 2-MORE 3/4" GUIDED RODS FROM ORIGINAL ROD STRING. TOP OF 3/4" ROD STRING IN TBG NOW ESTIMATED AT 2150'. SIW. WINTERIZED & SECURED RIG & ALL RIG EQUIPMENT. SDFWE.

1/16/2024 – CK PRESSURES. SICP = 110 PSI, SIICP = 100 PSI, SIBHP = 0 PSI. B/D WELL. MOVE IN, UNLOAD TOOL BOX SKIDS WITH FISHING RODS. PREPARE TO TRIP IN WITH REVERSE THREAD RODS. MAKE UP BOX TOP FISHING TOOL. START TRIP IN WITH 7/8" FISHING RODS. TAGGED 3/4" ROD FISH @ 2160'. LATCHED ONTO FISH. START RIGHT-HAND BACK OFF. GAINED 2,000 LBS STRING WEIGHT. TRIP OUT WITH 7/8" RODS. HANG BACK DOUBLES INTO THE DERRICK. RECOVERED 23- 3/4" GUIDED RODS & 9- 3/4" PLAIN RODS. TOP OF 3/4" ROD FISH ESTIMATED AT 2960'. MAKE UP BOX TAP TOOL. TRIP IN WITH 7/8" FISHING RODS. TAGGED 3/4" ROD FISH AT 2960'. LATCHED ONTO FISH. START RIGHT-HAND BACK OFF. GAINED MINIMAL STRING WEIGHT. TRIP OUT WITH 7/8" RODS. HANG BACK DOUBLES INTO THE DERRICK. DID NOT RECOVER ANY OF THE 3/4" ROD STRING. INSPECT & CHANGE OUT BOX TAP OVERSHOT TOOL. SIW. SDFN.

1/17/2024 – CK PRESSURES. SICP = 110 PSI, SIICP = 100 PSI, SIBHP = 0 PSI. B/D WELL. TAGGED 3/4" ROD FISH @ 2960'. LATCH ONTO FISH. START BACK OFF, GAINED 2K THEN LOST 2K, RETRY LATCHING ONTO FISH. ONLY GAINED .5K, RETRY WITH THE SAME RESULTS. TRIP OUT WITH 7/8" RODS. HANG BACK DOUBLES INTO THE DERRICK. RECOVERED 2- 3/4" PLAIN RODS. TOP OF 3/4" ROD FISH ESTIMATED @

SAN JUAN 29-7 UNIT 79B

30.039.26222

WELLHEAD REPAIR

3010' WITH COUPLING ON FISH TOP. MAKE UP PIN TAP TOOL. TRIP IN WITH 7/8" FISHING RODS. TAGGED 3/4" ROD FISH AT 3010'. LATCHED ONTO FISH. START BACK OFF. GAINED 3K OF STRING WEIGHT. START TRIP OUT WITH 7/8" RODS, HANGING BACK DOUBLES INTO THE DERRICK. DURING TRIP OUT, LOST STRING WEIGHT. CONTINUED TRIP OUT. RECOVERED 11- 3/4" PLAIN RODS (275'). TOP OF ROD FISH ESTIMATED AT 3285', WITH ROD PIN ON TOP. SIW. SDFN.

1/18/2024 – CK PRESSURES. SITP = 100 PSI, SICP = 100 PSI, SIICP = 100 PSI, SIBHP = 0 PSI. B/D WELL. MU BOX TAP FISHING TOOL. START TRIP IN WITH 7/8" FISHING RODS. TAGGED 3/4" ROD FISH @ 3305'. LATCH ONTO FISH. START BACK OFF, GAINED 2K THEN LOST 2K, RETRY LATCHING ONTO FISH. ONLY GAINED 100 LBS, RETRY WITH THE SAME RESULTS. TRIP OUT WITH 7/8" RODS. HANG BACK DOUBLES INTO THE DERRICK. NO RECOVERY WAS MADE. MAKE UP BOX TAP TOOL. TRIP IN WITH 7/8" FISHING RODS. TAGGED 3/4" ROD FISH @ 3305'. LATCHED ONTO FISH. START BACK OFF. GAINED 2K OF STRING WEIGHT. START TRIP OUT SLOW WITH 7/8" RODS, HANGING BACK DOUBLES INTO THE DERRICK. RECOVERED 29- 3/4" PLAIN RODS (725'). TOP OF ROD FISH ESTIMATED @ 4030', WITH ROD PIN ON TOP. MU NEW BOX TAP TOOL. TRIP IN WITH 7/8" FISHING RODS TO 3990'. INSTALL POLISHED ROD & RATIGAN. SIW. SDFN.

1/19/2024 – CK PRESSURES. SITP = 100 PSI, SICP = 100 PSI, SIICP = 100 PSI, SIBHP = 0 PSI. B/D WELL. CONTINUE TRIP IN WITH 7/8" FISHING RODS. TAGGED 3/4" ROD FISH @ 4030'. LATCH ONTO FISH. START BACK OFF, GAINED 2K THEN LOST 2K, RETRY LATCHING ONTO FISH. GAIN ABOUT 1K, RETRY WITH THE SAME RESULTS. TRIP OUT WITH 7/8" RODS. HANG BACK DOUBLES INTO THE DERRICK. RECOVERED 17- 3/4" PLAIN RODS (425'). TOP OF FISH ESTIMATED @ 4475', WITH PIN ON TOP. MAKE UP BOX TAP O/S TOOL. TRIPPED IN WITH 7/8" FISHING RODS. TAGGED 3/4" ROD FISH @ 4475'. LATCHED ONTO FISH. START BACK OFF. GAINED 3K THEN SLIPPED OFF. RETRY AND GAINED 1K. START TRIP OUT WITH 7/8" RODS, HANGING BACK DOUBLES INTO THE DERRICK. RECOVERED 12- 3/4" PLAIN RODS (300'). TOP OF ROD FISH ESTIMATED @ 4775', WITH ROD PIN ON TOP. M/U SAME BOX TAP O/S TOOL. TRIP IN WITH 7/8" FISHING RODS TO 4560'. INSTALL POLISHED ROD & RATIGAN. SIW. SDFWE.

1/22/2024 – CK PRESSURES. SITP = 110 PSI, SICP = 110 PSI, SIICP = 110 PSI, SIBHP = 0 PSI. B/D WELL. CONTINUE TRIP IN WITH 7/8" FISHING RODS. TAGGED 3/4" ROD FISH @ 4775'. LATCH ONTO FISH. GAINED 4K, START BACK OFF, THEN LOST WEIGHT. RETRY LATCHING ONTO FISH. GAIN ABOUT 3K AND LOST WEIGHT. RETRY WITH THE SAME RESULTS. TRIP OUT WITH 7/8" RODS. HANG BACK DOUBLES INTO THE DERRICK. RECOVERED 13- 3/4" PLAIN RODS (325'). TOP OF FISH ESTIMATED @ 5100', WITH A ROD PIN ON FISH TOP. MAKE UP BOX TAP O/S TOOL. TRIP IN WITH 7/8" FISHING RODS. TAGGED 3/4" ROD FISH @ 5100'. LATCHED ONTO FISH. GAINED 3K. START BACK OFF, THEN SLIPPED OFF. RETRY AND GAINED MINIMAL WEIGHT. START TRIP OUT WITH 7/8" RODS, HANGING BACK DOUBLES INTO THE DERRICK. RECOVERED 10- 3/4" PLAIN RODS (250'). TOP OF ROD FISH ESTIMATED @ 5350', WITH ROD PIN ON TOP. M/U SAME BOX TAP O/S TOOL. TRIP IN WITH 7/8" FISHING RODS TO 5190'. INSTALLED POLISHED ROD & RATIGAN. SIW. SDFN.

1/23/2024 – CK PRESSURES. SITP = 90 PSI, SICP = 100 PSI, SIICP = 100 PSI, SIBHP = 0 PSI. B/D WELL. CONTINUE TRIP IN WITH 7/8" FISHING RODS. TAGGED 3/4" ROD FISH @ 5350'. LATCH ONTO FISH. GAINED 2K, START BACK OFF, THEN LOST WEIGHT. RETRY LATCHING ONTO FISH. GAIN ABOUT 2K AND LOST WEIGHT. RETRY WITH THE SAME RESULTS. GAINED VERY MINIMAL WEIGHT. TRIP OUT WITH 7/8" RODS. HANG BACK DOUBLES INTO THE DERRICK. RECOVERED 3- 3/4" PLAIN RODS (75'). TOP OF FISH ESTIMATED @ 5425', WITH A ROD PIN ON FISH TOP. MAKE UP BOX TAP O/S TOOL. TRIP IN WITH 7/8"

SAN JUAN 29-7 UNIT 79B

30.039.26222

WELLHEAD REPAIR

FISHING RODS. TAGGED 3/4" ROD FISH @ 5425'. LATCHED ONTO FISH. GAINED 3K. START BACK OFF, THEN SLIPPED OFF. RETRY AND GAIN LITTLE TO NO EXTRA STRING WEIGHT. START TRIP OUT WITH 7/8" RODS, HANGING BACK DOUBLES INTO THE DERRICK. NO RECOVERY WAS MADE. TOP OF ROD FISH STILL @ 5425'. M/U DIE COLLAR TAP TOOL. TRIPPED IN WITH 7/8" FISHING RODS TO 3960'. INSTALLED POLISHED ROD & RATIGAN. SIW. SDFN.

1/24/2024 – CK PRESSURES. SITP = 90 PSI, SICP = 100 PSI, SIICP = 100 PSI, SIBHP = 0 PSI. B/D WELL. CONTINUE TRIP IN WITH DIE COLLAR TAP TOOL & FISHING RODS. TAGGED 3/4" ROD FISH @ 5425'. LATCH ONTO FISH. GAINED 3K, START BACK OFF, THEN LOST WEIGHT. RETRY LATCHING ONTO FISH. GAIN ABOUT 2K AND LOST WEIGHT. RETRY WITH THE SAME RESULTS. GAIN NO NOTICEABLE WEIGHT. TRIP OUT WITH 7/8" & 1" RODS. HANG BACK DOUBLES INTO THE DERRICK. NO RECOVERY WAS MADE. ALSO BROKE OVERSHOT TOOL. TALK WITH HEC ENGINEER. WILL ORDER OUT & PUMP 100 GALS OF DIESEL DOWN THE TBG. MIRU ELEMENTS SERVICES. PUMP 100 GALS DIESEL. RDMO ELEMENTS. MAKE 2-SWAB LINE RUNS WITH MAGNET. DID NOT RECOVER FISHING TOOL PIECE. MAKE UP BOX TAP O/S TOOL. START TRIP IN WITH 7/8" & 1" FISHING RODS. WORKED ON ROD TONGS. TRIPPED FISHING RODS TO 5395'. INSTALLED POLISHED ROD & RATIGAN. SIW. SDFN.

1/25/2024 – CK PRESSURES. SITP = 90 PSI, SICP = 100 PSI, SIICP = 100 PSI, SIBHP = 0 PSI. B/D WELL. CONTINUE TRIP IN WITH BOX TAP O/S TOOL & FISHING RODS. TAG 3/4" ROD FISH @ 5425'. LATCH ONTO FISH. GAINED 3K, START BACK OFF, THEN LOST WEIGHT. RETRY LATCHING ONTO FISH. GAIN ABOUT 2K AND LOST WEIGHT. RETRY WITH THE SAME RESULTS. GAINED NO NOTICEABLE WEIGHT. TRIP OUT WITH 7/8" & 1" RODS. HANG BACK DOUBLES INTO THE DERRICK. NO RECOVERY WAS MADE. NOTIFY HEC ENGINEERING. WILL MOVE TO TBG CUTTING OPS. CALL FOR TBG FLOAT WITH WORK STRING. CALL WIRELINE GROUP FOR TBG CUTTING SERVICES. N/D WH ASSM. N/U BOP ASSM. FUNC TEST GOOD. R/U FLOOR & TBG TOOLS. PULL TBG HNGR TO FLOOR & REMOVE. WORK TBG TO 55K, NOT FREE. MOVE IN REP TBG. MOVE ROD BSKTS. RESLOT EMPTY TBG FLOAT. MIRU WIRELINE GROUP. RIH WITH 1.75" GAUGE RING. TAG ROD TOP @ 5429' WLM. FIND SEVERAL TBG COLLARS IN DESIRED CUT AREA. RIH WITH CHEMICAL CUTTING TOOL. CORRELATE TO TBG COLLAR @ 5402' WLM. PUMPED 25 BBLS WATER TO INITIATE CUTTING PROCESS. CUT TBG @ 5396' WLM, APPEARED TO HAVE A GOOD CUT. RDMO WIRELINE GROUP UNIT & TOOLS. START LAYING DOWN WELL TBG ONTO FLOAT. SIW. SDFN.

1/26/2024 – CK PRESSURES. SITP = 100 PSI, SICP = 100 PSI, SIICP = 100 PSI, SIBHP = 0 PSI. B/D WELL. CONTINUED TRIP OUT OF WELL LAYING DOWN WELL 2 3/8" TBG. CAME OUT WITH 171- TBG JNTS & 1-PARTIAL CUT JNT. CHANGED OUT TBG FLOATS. M/U OVERSHOT FISHING ASSM. TALLY, RABBIT & TRIP INTO WELL WITH 2 3/8" WORK STRING TBG. TRIPPED TO 3658'. STOOD BACK 1661' OF FISHING STRING INTO THE DERRICK. SIW. SDFWE.

1/29/2024 – CK PRESSURES. SITP = 20 PSI (CHECK VALVE ON), SICP = 110 PSI, SIBHP = 0 PSI. B/D WELL. TIH W/26 STS AND 3 JTS, TIGHT BACK, LATCH ON TO FISH AT 5396', JARD ON IT FOR 3.5 HRS TO 70K, TBG STRETCH OR MOVED UP 20" AND THEN CAME LOOSE, TOH W/TBG AND COLLARS TO CHECK IF SOMETHING CAME OUT, DIDN'T BRING ANYTHING, GRAPPLE WAS FLAT, REPLACED IT AND ADD A 3' EXTENSION, RUN BACK IN WITH OVERSHOT, JARDS AND COLLARS + 54 STS TO 3658'. SIW. (DECIDED TO TRIP OUT WITH TOOLS, RUN IN RBP, TEST WELL HEAD AND CSG INTERMEDIATE, IN THE MORNING) SDFN.

1/30/2024 – CK PRESSURES. SITP = 0 PSI (CHECK VALVE ON), SICP = 90 PSI, SIBHP = 0 PSI. B/D WELL. PULLED OUT 2 JTS AND RUN 5 1/2" PKR 2 JTS DOWN, SET IT AND TEST FOR COMMUNICATION BETWEEN

SAN JUAN 29-7 UNIT 79B

30.039.26222

WELLHEAD REPAIR

CSG AND INTERMEDIATE CSG, LOOKED LIKE IT WAS COMMUNUCATING, PULLED OUT PKR AND RUN 5 ½" RBP 2 JTS DOWN- SET IT AND TEST IT W/PKR- ND BOP, AND FOUND JUST A SPOOL WITH VALVES ON WHAT LOOKED LIKE IT WAS THE INTERMEDIATE CSG. DIG 3' DOWN-FOUND SOLID CEMENT AND NO SURFACE CSG, **TALK TO OCD, (THEY WANT TO DIG TOTAL OF 10')**, WILL CONTINUE DIGGING TOMORROW WITH JACK HAMMER. NU BOP, TEST CSG TO 600 PSI-NO COMM W/INTER CSG. RELEASE RBP AND PULLED OUT, TOH WITH 54 STS, LD DC AND FISHING TOOLS. SIW. SDFN.

1/31/2024 – CK PRESSURES. SICP = 100 PSI, SIICP = 0 PSI, SIBHP = 0 PSI. B/D WELL. **DIG ABOUT 4' AROUND WELL HEAD WITH JACK HAMMER TO UNCOVER BRADENHEAD VALVE. REPLACE IT AND INSTALL A VALVE TO SURFACE.** TRIP IN DRIFTING PRODUCTION TBG AS FOLLOWS= 3 7/8" OVERSHOD, 6' PERF SUB, NEW 1.78" SN, 167 JTS, 6', 2' TBG SUBS AND 1 JT. (2 3/8" #4.7 L-80 YB TBG). RD RIG FLOOR, ND BOP, PULLED OUT TBG HANGER, DROP TBG AND LATCH ON TO REMAINING TBG AT 5396-7337', LAND TBG HANGER W/10K OVER, (35K TO LIFT TBG HANGER). INTALL WELL HEAD AND MASTER VALVE. TRIP IN WITH RODS WORK STRING AND LAY IT DOWN, 172 RODS TOTAL. SIW. SDFN.

Tammy Jones

From: Tammy Jones
Sent: Wednesday, December 20, 2023 9:02 AM
To: Farmington Regulatory Techs; Matthew Esz; Ben Hampton; James Osborn; Ryan Frost; Juan Cardenas
Subject: [BH Repair] San Juan 29 7 Unit 79B 30-039-26222
Attachments: San Juan 29-7 Unit 79B BH repair NOI NMOCD BLM Approved.pdf

Please see attached approved NOI and highlighted COAs
Project is RTI for regulatory.

From: OCDOnline@state.nm.us OCDOnline@state.nm.us
Sent: Wednesday, December 20, 2023 7:36 AM
To: Tammy Jones tajones@hilcorp.com
Subject: [EXTERNAL] The Oil Conservation Division (OCD) has approved the application, Application ID: 292983

To whom it may concern (c/o Tammy Jones for HILCORP ENERGY COMPANY),

The OCD has approved the submitted *NOI - Remedial Workover* (C-103G), for API number (30-#) 30-039-26222, with the following conditions:

- **Notify NMOCD 24 hours prior to moving on -**

The signed C-103G can be found in the OCD Online: Imaging under the API number (30-#).

If you have any questions regarding this application, please contact me.

Thank you,
Monica Kuehling
OCD Inspector
505-334-6178
monica.kuehling@emnrd.nm.gov

New Mexico Energy, Minerals and Natural Resources Department
1220 South St. Francis Drive
Santa Fe, NM 87505

From: Tammy Jones
Sent: Wednesday, December 20, 2023 7:27 AM
To: Kuehling, Monica, EMNRD <monica.kuehling@emnrd.nm.gov>; Durham, John, EMNRD <john.durham@emnrd.nm.gov>; John Garcia <johgarcia@hilcorp.com>
Cc: Farmington Regulatory Techs <FarmingtonRegulatoryTechs@hilcorp.com>; Matthew Esz <Matthew.Esz@hilcorp.com>; Ben Hampton <bhampton@hilcorp.com>; James Osborn <josborn@hilcorp.com>; Ryan Frost <rfrost@hilcorp.com>
Subject: RE: [BH Repair NOI] San Juan 29 7 Unit 79B 30-039-26222
Importance: High

John/Monica,

This is planned for rig soon. HEC is requesting BH NOI approval for the subject well.
It has been submitted on OCD Permitting, **ACTION ID 292983**.

Thank you,
Tammy Jones | **HILCORP ENERGY COMPANY** | San Juan Regulatory | 505.324.5185 | tajones@hilcorp.com

From: Tammy Jones <tajones@hilcorp.com>
Sent: Monday, December 11, 2023 7:57 AM
To: Kuehling, Monica, EMNRD <monica.kuehling@emnrd.nm.gov>; Durham, John, EMNRD <john.durham@emnrd.nm.gov>
Cc: Farmington Regulatory Techs <FarmingtonRegulatoryTechs@hilcorp.com>; Matthew Esz <Matthew.Esz@hilcorp.com>; Ben Hampton <bhampton@hilcorp.com>; James Osborn <josborn@hilcorp.com>; Ryan Frost <rfrost@hilcorp.com>
Subject: [BH Repair NOI] San Juan 29 7 Unit 79B 30-039-26222
Importance: High

Monica,

Please review the BH NOI for the subject well. It has been submitted on OCD Permitting, **ACTION ID 292983**.

Thank you,
Tammy Jones | **HILCORP ENERGY COMPANY** | San Juan Regulatory | 505.324.5185 | tajones@hilcorp.com

From: Tammy Jones
Sent: Friday, November 17, 2023 11:33 AM
To: Kuehling, Monica, EMNRD <monica.kuehling@emnrd.nm.gov>; Farmington Regulatory Techs <FarmingtonRegulatoryTechs@hilcorp.com>
Subject: RE: [EXTERNAL] San Juan 29 7 Unit 79B 30-039-26222

Monica – this has been sent to the Area Engineer.

Thanks,
Tammy Jones | **HILCORP ENERGY COMPANY** | San Juan Regulatory | 505.324.5185 | tajones@hilcorp.com

From: Kuehling, Monica, EMNRD <monica.kuehling@emnrd.nm.gov>
Sent: Friday, November 17, 2023 10:20 AM
To: Farmington Regulatory Techs <FarmingtonRegulatoryTechs@hilcorp.com>
Subject: [EXTERNAL] San Juan 29 7 Unit 79B 30-039-26222

CAUTION: External sender. DO NOT open links or attachments from UNKNOWN senders.

Hello

A bradenhead test was witnessed by NMOCD Inspector John Durham on July 31, 2023.

Initial pressures			
	Bradenhead	Intermediate	Production casing
2023	0	61	61

Direct communication between production casing and intermediate were observed. Intermediate flowed for full 30-minute test. Production casing pressure dropped while intermediate open.

Previous tests

2020	0	0	65
2017	0	0	95

Gas analysis and wellbore schematic have been received. Gas analysis shows same gas on intermediate and production casing.

In order to comply with rule 19.15.16.11, prevent waste and protect fresh water, Hilcorp Energy Company is directed to find source of gas on intermediate and fix or plug within 90 days of the date of this email.

If you have any questions, please let me know.

Thank you

Monica Kuehling
Compliance Officer Supervisor
Deputy Oil and Gas Inspector
New Mexico Oil Conservation Division
North District
Office Phone: 505-334-6178 ext. 123
Cell Phone: 505-320-0243
Email - monica.kuehling@emnrd.nm.gov

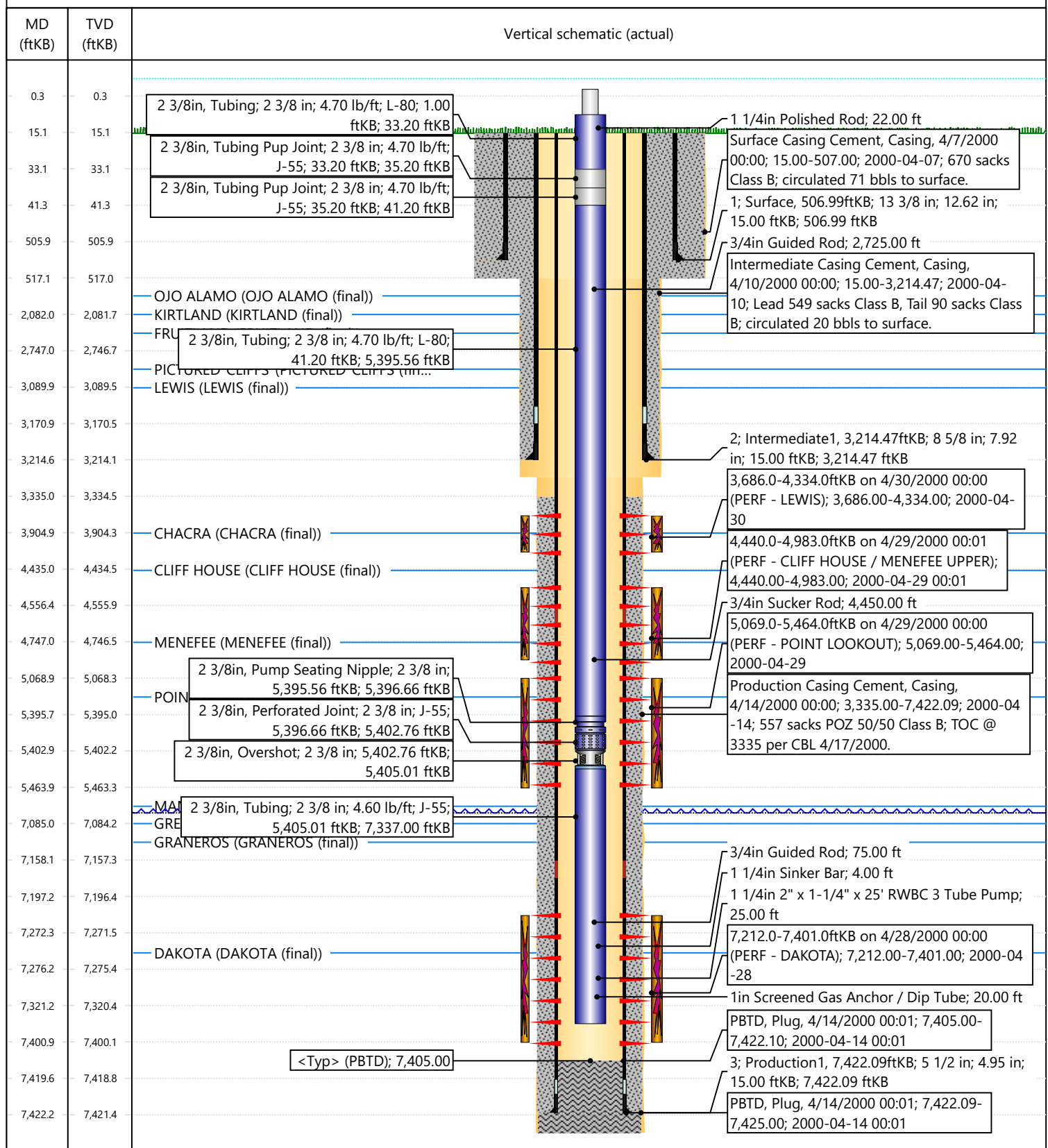


Current Schematic - Version 3

Well Name: SAN JUAN 29-7 UNIT #79B

API / UWI 3003926222	Surface Legal Location 005-029N-007W-K	Field Name BASIN DAKOTA (PRORATED GAS)	Route 1000	State/Province NEW MEXICO	Well Configuration Type VERTICAL
Ground Elevation (ft) 6,103.00	Original KB/RT Elevation (ft) 6,118.00	RKB to GL (ft) 15.00	KB-Casing Flange Distance (ft)	KB-Tubing Hanger Distance (ft)	

Original Hole [VERTICAL]



Sante Fe Main Office
Phone: (505) 476-3441

General Information
Phone: (505) 629-6116

Online Phone Directory
<https://www.emnrd.nm.gov/ocd/contact-us>

State of New Mexico
Energy, Minerals and Natural Resources
Oil Conservation Division
1220 S. St Francis Dr.
Santa Fe, NM 87505

CONDITIONS

Action 312190

CONDITIONS

Operator: HILCORP ENERGY COMPANY 1111 Travis Street Houston, TX 77002	OGRID: 372171
	Action Number: 312190
	Action Type: [C-103] Sub. Workover (C-103R)

CONDITIONS

Created By	Condition	Condition Date
mkuehling	Intermediate and bradenhead pressures prior to 1/31/24 were taken on the wrong valve - bh valve is 5 feet deep will find pictures in next document in the well file.	1/28/2025