

Submit a Copy To Appropriate District  
Office  
District I – (575) 393-6161  
1625 N. French Dr., Hobbs, NM 88240  
District II – (575) 748-1283  
811 S. First St., Artesia, NM 88210  
District III – (505) 334-6178  
1000 Rio Brazos Rd., Aztec, NM 87410  
District IV – (505) 476-3460  
1220 S. St. Francis Dr., Santa Fe, NM  
87505

State of New Mexico  
Energy, Minerals and Natural Resources

Form C-103  
Revised July 18, 2013

OIL CONSERVATION DIVISION  
1220 South St. Francis Dr.  
Santa Fe, NM 87505

WELL API NO. 30-015-23626
5. Indicate Type of Lease STATE <input checked="" type="checkbox"/> FEE <input type="checkbox"/>
6. State Oil & Gas Lease No.
7. Lease Name or Unit Agreement Name <b>STATE DA</b>
8. Well Number <b>#001</b>
9. OGRID Number 192463
10. Pool name or Wildcat [86480] TURKEY TRACK;MORROW (GAS)

<b>SUNDRY NOTICES AND REPORTS ON WELLS</b> (DO NOT USE THIS FORM FOR PROPOSALS TO DRILL OR TO DEEPEN OR PLUG BACK TO A DIFFERENT RESERVOIR. USE "APPLICATION FOR PERMIT" (FORM C-101) FOR SUCH PROPOSALS.)	
1. Type of Well: Oil Well <input type="checkbox"/> Gas Well <input checked="" type="checkbox"/> Other	
2. Name of Operator OXY USA WTP LP	
3. Address of Operator P.O. BOX 4294 HOUSTON, TX 77210	
4. Well Location Unit Letter <u>J</u> : <u>1650</u> feet from the <u>SOUTH</u> line and <u>2310</u> feet from the <u>EAST</u> line Section <u>3</u> Township <u>19S</u> Range <u>29E</u> NMPM County <u>EDDY</u>	
11. Elevation (Show whether DR, RKB, RT, GR, etc.)	

12. Check Appropriate Box to Indicate Nature of Notice, Report or Other Data

NOTICE OF INTENTION TO:		SUBSEQUENT REPORT OF:	
PERFORM REMEDIAL WORK <input type="checkbox"/>	PLUG AND ABANDON <input type="checkbox"/>	REMEDIAL WORK <input type="checkbox"/>	ALTERING CASING <input type="checkbox"/>
TEMPORARILY ABANDON <input type="checkbox"/>	CHANGE PLANS <input type="checkbox"/>	COMMENCE DRILLING OPNS. <input type="checkbox"/>	P AND A <input checked="" type="checkbox"/>
PULL OR ALTER CASING <input type="checkbox"/>	MULTIPLE COMPL <input type="checkbox"/>	CASING/CEMENT JOB <input type="checkbox"/>	
DOWNHOLE COMMINGLE <input type="checkbox"/>			
CLOSED-LOOP SYSTEM <input type="checkbox"/>			
OTHER: <input type="checkbox"/>		OTHER: <input type="checkbox"/>	

13. Describe proposed or completed operations. (Clearly state all pertinent details, and give pertinent dates, including estimated date of starting any proposed work). SEE RULE 19.15.7.14 NMAC. For Multiple Completions: Attach wellbore diagram of proposed completion or recompletion.

THE FINAL WELLBORE AND PA JOB NOTES ARE ATTACHED. THE WELLHEAD WAS CUT AND CAPPED ON 3/6/2025.

Spud Date:

Rig Release Date:

I hereby certify that the information above is true and complete to the best of my knowledge and belief.

SIGNATURE Stephen Janacek TITLE REGULATORY ENGINEER DATE 4/25/2025

Type or print name STEPHEN JANACEK E-mail address: STEPHEN\_JANACEK@OXY.COM PHONE: 713-493-1986

**For State Use Only**

APPROVED BY: \_\_\_\_\_ TITLE \_\_\_\_\_ DATE \_\_\_\_\_

Conditions of Approval (if any):

STATE DA #001  
30-015-23626

Surface Casing:

Hole Size: 17 1/2"

Casing Size: 13 3/8" @335'

Casing Weight: 48#

Cement Details: 550 sxs to 0'

Did Not Circ @ Surf

5yd Redi-mix to Surf

Intermediate Casing:

Hole Size: 12 1/4"

Casing Size: 8 5/8" @3,020'

Casing Weight: 24# & 32#

Cement Details: 1700 sxs to 0'

Circ 200 sxs @ surf

Production Casing:

Hole Size: 7 7/8"

Casing Size: 5 1/2" @11,525'

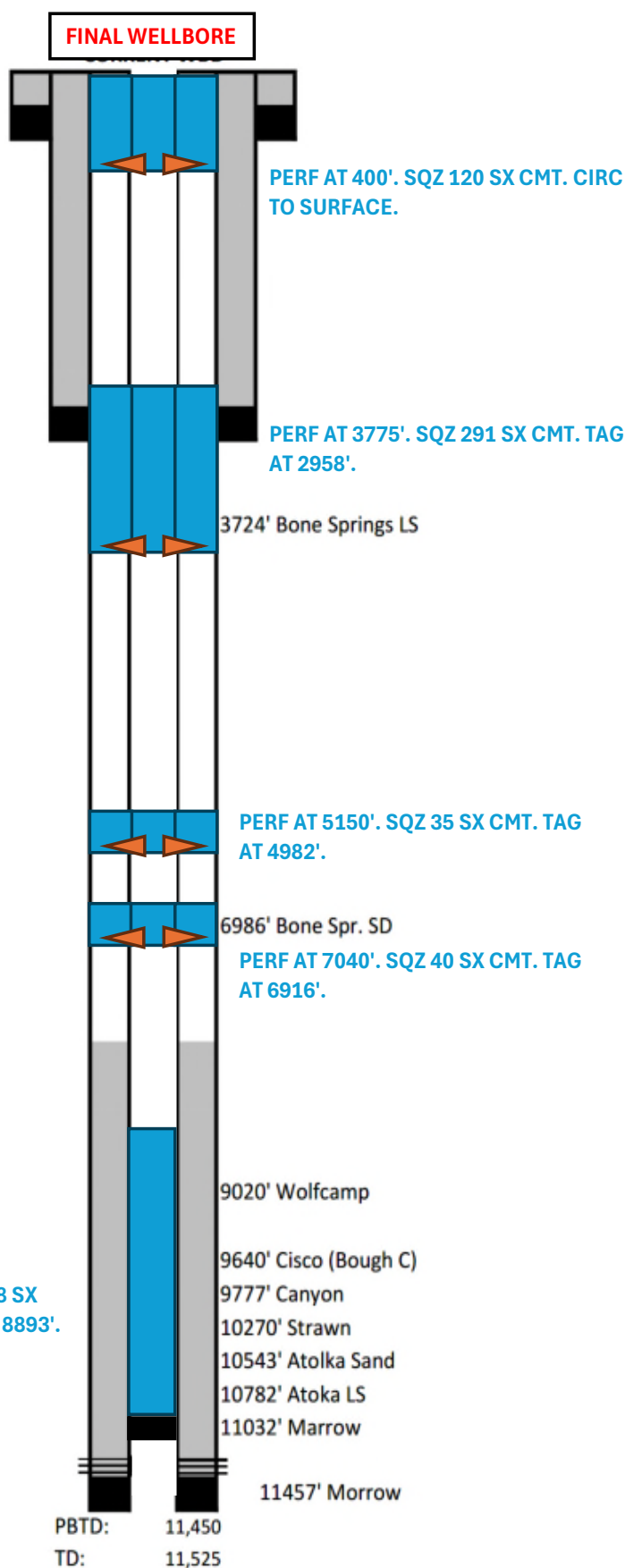
Casing Weight: 17# & 20#

Cement Details: 850 sxs to 7,710'

TOC @ 7,710' temp log

Perforations 11,396' - 11,419'

SET CIBP AT 11350'. SPOT 258 SX  
CMT 11350' TO 8970'. TAG AT 8893'.



## STATE DA #001

30-015-23626

## PA JOB NOTES

Start Date	Remarks
1/27/2025	CREW TRAVEL TO LOCATION
1/27/2025	HPJSM W/ ALL PERSONAL ON LOCATION
1/27/2025	PERFORMED PRE-TRIP RIG INSPECTION
1/27/2025	LOAD WS TBG & LOAD P&A EQUIP
1/27/2025	DROVE PULLING UNIT & P&A PUMP ASSOCIATED EQUIP FROM THE VILLA B COM 002 TO THE STATE DA 001
1/27/2025	HPJSM W/ ALL PERSONAL ON LOC DISCUSSED FIT FOR DUTY / STAY HYDRATED DRINK WATER TAKE BREAKS EAT FRUIT, ZERO TOLERANCE / HAND & FINGER SAFETY CAMPAIGN / STOP WORK AUTHORITY, LOTO / PPE, MEET & GREET / GOOD COMMUNICATION AT ALL TIMES / PINCH POINTS & HAND PLACEMENT / SUSPENDED LOADS / LINE OF FIRE / ONE TASK AT A TIME / TRIP HAZARDS / H2S / MUSTER AREA / HOUSE KEEPING / UPDATE JSA AS TASK CHANGES
1/27/2025	UNLOAD AND SPOTTED P&A PUMP & ASSOCIATED EQUIPMENT / UNLOAD & SPOTTED BASE BEAM
1/27/2025	LO/TO ON FLOW LINE VALVES / RD FLOW LINE / MIRU AXIS ENERGY RIG 2141 & P&A ASSOCIATED EQUIP / SET PIPE RACKS & MI OIL DOG PIPE RENTAL UNLOAD 350 JTS OF 2-3/8" L-80 WS TBG
1/27/2025	CHECK PSI ON WELL 2-7/8" PROD TBG = 1300 PSI, 5.5" PROD CSG = 0 PSI, DIG OUT CELLAR 8-5/8" INTER CSG = 0 PSI, 13-3/8" SURF CSG = 0 PSI
1/27/2025	SECURE WELL SDFN
1/27/2025	CREW TRAVEL BACK HOME.
1/28/2025	CREW TRAVEL TO LOCATION
1/28/2025	HPJSM WITH ALL PERSONAL ON LOCATION
1/28/2025	PERFORMED DAILY START UP RIG INSPECTION
1/28/2025	SET CO/FO & FUNCTION TEST
1/28/2025	CHECK PSI ON WELL 2-7/8" PROD TBG = 1200 PSI 5.5" PROD CSG = 0 PSI 8-5/8" INTER CSG = 0 PSI 13-3/8" SURF CSG = 0 PSI
1/28/2025	MIRU PUMP ON 5.5" PROD CSG / RU RESTRAINTS ON ALL IRON / TEST LINES TO 1500 PSI W/ A GOOD TEST / OPEN WELL LOAD BACK SIDE W/ 3 BBLS 10# BW TEST CSG TO 500 PSI HOLD PSI FOR 15 MIN W/ A GOOD TEST BLEED OFF PSI
1/28/2025	RU PUMP ON TBG / TEST LINES TO 3500 PSI W/ A GOOD TEST / BLEED OFF GAS HEAD F/ TBG TO 300 PSI / PUMP 65 BBLS 10# BW DWN TBG F/ WELL CONTROL 1 BPM @ 1000 PSI TBG WENT ON SMALL VACUUM MONITOR WELL F/ 15 MIN WELL STATIC
1/28/2025	FUNCTION TEST BOP W/ A GOOD TEST
1/28/2025	ND 5K X 7-1/16" PROD TREE / LD TREE NOTE: TOOK MORE TIME THAN USUAL TO BREAK NUTS F/ WH TREE / DUE TO RUSTED BOLTS / HAMMER BOLTS OUT
1/28/2025	NU 5K HYD BOP W/ 5K 2-7/8" & 2-3/8" FLEX PIPE RAMS ON TOP AND 5K BLINDS ON BOTTOM

1/28/2025	RU WORK FLOOR W/ 2-7/8" TBG HANDLING TOOLS, SET UP SAFETY EQUIP, CENTER & LEVEL RIG OVER HOLE
1/28/2025	PICK UP ON TBG TO SET TBG SLIPS IN POSITION TBG NEUTRAL WEIGHT @ 72 PTS / WORK ON GETTING PACKER RELEASE WORKING TBG UP & DOWN W/ TBG TONGS F/ 82 PTS / 72 PTS / 64 PTS GOT PROD PKR RELEASE
1/28/2025	PERFORM BOP CLOSING DRILL SECURED WELL CREW MET @ MUSTER AREA IN 1 MIN
1/28/2025	POOH STANDING BACK 210 JTS 2-7/8" WS TBG (TALLY TBG AS POOH)
1/28/2025	SECURE WELL SDFN
1/28/2025	CREW TRAVEL BACK TO MAN CAMP
1/29/2025	CREW TRAVEL TO LOCATION
1/29/2025	HPJSM WITH ALL PERSONAL ON LOCATION
1/29/2025	PERFORMED DAILY START UP RIG INSPECTION
1/29/2025	SET CO/FO & FUNCTION TEST
1/29/2025	CHECK PSI ON WELL 2-7/8" PROD TBG = 0 PSI 5.5" PROD CSG = 150 PSI
1/29/2025	BLEED OFF GAS HEAD F/ ALL STRINGS / PUMP 60 BBLS 10# BW DOWN CSG F/ WELL CONTROL / CSG ON VACUUM
1/29/2025	OPEN WELL CONT POOH STANDING BACK 154 JTS 2-7/8" WS TBG / LD ON/OFF TOOL & 5-1/2" LOK – SET PKR, 4' X 2-7/8" MULE SHOE (TALLY TBG AS POOH / RUN TALLY 5-1/2" PROD PKR WAS SET @ 11,286' (TMD)
1/29/2025	MIRU RTX WL / RU PCE REHEAD ROPE SOCKET / MAKE UP & RIH W/ 4.5" OD GR/JB F/ 5.5" CSG 1-11/16" WEIGHT BAR W/ CCL TO 11,400' (WMD) W/ NO ISSUES POOH W/ GR/JB FOUND FLUID LEVEL @ 2570' (+-) F/ SURF BREAK DOWN GR/JB / MAKE UP 4.24" OD CIBP F/ 5.5" CSG RIH W/ WL SET 5.5" CIBP @ 11,350' (WMD) W/ NO ISSUES PULL UP HOLE W/ WL 50' RBIH TAG CIBP @ 11,350' (WMD) CONFIRMED PLUG SET SUCCESSFULLY / POOH W/ WL SETTING TOOL
1/29/2025	LOAD BACK SIDE W/ 64 BBL 10# BW / MAKE UP & CALIBRATE 2.75" OD CBL LOGGING TOOLS AT SURF (ALL GOOD) RIH W/ CBL LOGGING TOOLS FOUND FLUID LEVEL @ SURF / TESTED TOOLS @ 1200' F/ SURF / CONT RIH W/ WL BHA TO 11,350' RUN CBL F/ (11,350' – 0' SURF) (HARD BOND F/ 11,350' – 7730') (FREE PIPE F/ 7730' – 7560') (LIGHT CMT F/ 7560' – 7430') (FREE PIPE F/ 7430' – 0' SURF) (EST TOC @ 7430' F/ SURF) LD CBL LOGGING TOOLS RDMO RTX WL, NOTE: SEND CBL TO MR. DAVID ALVARADO W/ NMOC D FOR REVIEW CLOSE BOP
1/29/2025	SECURE WELL SDFN
1/29/2025	CREW TRAVEL BACK TO MAN CAMP
1/30/2025	CREW TRAVEL TO LOCATION
1/30/2025	HPJSM WITH ALL PERSONAL ON LOCATION
1/30/2025	PERFORMED DAILY START UP RIG INSPECTION
1/30/2025	SET CO/FO & FUNCTION TEST
1/30/2025	CHECK PSI ON WELL ALL STRINGS = 0 PSI
1/30/2025	OPEN WELL PICK UP 4' X 2-7/8" PERF TBG SUB RIH OPEN ENDED W/ 2-7/8" WS TBG TAG 5.5" CIBP @ 11,320' (TMD) W/ 365 JTS IN THE HOLE
1/30/2025	MIRU PUMP ON TBG CIRC WELL CLEAN W/ 265 BBLS 10# BW MIX 36 GAL OF FLEX GEL W/ 180 BBLS 10# BW

1/30/2025	PRESSURE TEST CIBP & PROD CSG TO 500 PSI HOLD PRESSURE F/ 30 MIN W/ A GOOD TEST BLEED OFF PRESSURE
1/30/2025	SECURE WELL SDFN
1/30/2025	CREW TRAVEL BACK TO MAN CAMP
1/31/2025	CREW TRAVEL TO LOCATION
1/31/2025	HPJSM WITH ALL PERSONAL ON LOCATION
1/31/2025	PERFORMED DAILY START UP RIG INSPECTION
1/31/2025	SET CO/FO & FUNCTION TEST
1/31/2025	CHECK PSI ON WELL ALL STRINGS = 0 PSI
1/31/2025	OPEN WELL MIRU AXIS ENERGY CMT PUMP ON TBG / RU BULK TRK & LOAD BULK TRK W/ 350 SXS CLASS H CMT / RU RESTRAINTS ON ALL IRON / TEST LINES TO 2500 PSI / BREAK CIRC W/ 8 BBLS 10# BW 1ST PLUG) SET 5.5" CIBP @ 11,350' BALANCED PLUG F/ 11,350' – 8970' SPOT 258 SXS CLASS H CMT / 15.6# 1.18 YIELD / 54.22 BBLS SLURRY / MIX W/ 8 GAL OF CMT RETARDER / 2442' PLUG CAP / DISPLACE TOC TO 8878' / DISPLACE W/ 51.4 BBLS 10# BW
1/31/2025	POOH W/ 45 STANDS LD 78 JTS 2-7/8" WS TBG EOT @ 6107' (TMD) W/ 197 JTS IN THE HOLE / REVERSE OUT W/ 40 BBLS 10# BW
1/31/2025	SECURE WELL SDFN
1/31/2025	CREW TRAVEL BACK TO MAN CAMP
2/1/2025	CREW TRAVEL TO LOCATION
2/1/2025	HPJSM WITH ALL PERSONAL ON LOCATION
2/1/2025	PERFORMED DAILY START UP RIG INSPECTION
2/1/2025	SET CO/FO & FUNCTION TEST
2/1/2025	CHECK PSI ON WELL ALL STRINGS = 0 PSI
2/1/2025	OPEN WELL RIH W/ 2-7/8" WS TBG TAG TOC @ 8893' (TMD) W/ 287 JTS IN THE HOLE
2/1/2025	POOH STANDING BACK 224 JTS & LD 63 JTS 2-7/8" WS TBG / BREAK 4' X 2-7/8" PERF TBG SUB
2/1/2025	SECURE WELL SDFW
2/1/2025	CREW TRAVEL BACK HOME
2/3/2025	CREW TRAVEL TO LOCATION
2/3/2025	HPJSM WITH ALL PERSONAL ON LOCATION
2/3/2025	PERFORMED DAILY START UP RIG INSPECTION
2/3/2025	SET CO/FO & FUNCTION TEST
2/3/2025	CHECK PSI ON WELL ALL STRINGS = 0 PSI
2/3/2025	MAKE UP & RIH W/ 5.5" (4.625" OD) ARROW SET PKR SET 5.5" AS1 PKR @ 6641' (TMD) W/ 214 JTS IN THE HOLE
2/3/2025	LOAD BACK SIDE W/ 5 BBLS 10# BW TEST PKR TO 500 PSI W/ A GOOD TEST
2/3/2025	MIRU RTX WL / RU PCE / MAKE UP & RIH W/ BHA TO 7040' SHOT 6 SQZ HOLES / POOH W/ WL BHA LD GUN VERIFIED ASF RDMO WL

	RU CMT PUMP ON TBG / TEST LINES / EST – INJ RATE @ 2.8 BPM @ 600 PSI PUMP 40 BBLS 10# BW W/ FULL RETURNS AT SURF ON 8-5/8" INTER CSG / RU BULK TRK & LOAD BULK TRK W/ 350 SXS CL C CMT / 2ND PLUG) PERF @ 7040' SQZ 40 SXS CLASS C CMT / 14.8# 1.32 YIELD / 8.4 BBLS SLURRY / (PLUG CAP 110' / 2.55 BBLS SLURRY / 12.13 SXS IN 5.5" PROD CSG) & (PLUG CAP 110' / 5.85 BBLS SLURRY / 27.87 SXS IN 7-7/8" OPEN HOLE) / DISPLACE TOC TO 6930' / DISPLACE W/ 45.15
2/3/2025	BBLS 10# BW / ISIP = 0 PSI
2/3/2025	SECURE WELL SDFN
2/3/2025	CREW TRAVEL BACK TO MAN CAMP
2/4/2025	CREW TRAVEL TO LOCATION
2/4/2025	HPJSM WITH ALL PERSONAL ON LOCATION
2/4/2025	PERFORMED DAILY START UP RIG INSPECTION
2/4/2025	SET CO/FO & FUNCTION TEST
2/4/2025	CHECK PSI ON WELL ALL STRINGS = 0 PSI
2/4/2025	OPEN WELL UNSEAT 5.5" PKR RIH W/ 2-7/8" WS TBG TAG TOC @ 6916' (TMD) W/ 222 JTS IN THE HOLE 4' OUT ON JT# 223
2/4/2025	POOH W/ 5 STANDS LD 62 JTS 2-7/8" WS TBG SET PKR @ 4688' (TMD) W/ 151 JTS IN THE HOLE
2/4/2025	LOAD BACK SIDE W/ 4 BBLS TEST PKR TO 500 PSI
2/4/2025	MIRU RTX WL / RU PCE / MAKE UP & RIH W/ BHA TO 5150' SHOT 6 SQZ HOLES / POOH W/ WL BHA LD GUN VERIFIED ASF RD WL
2/4/2025	EST – INJ RATE @ 2.5 BPM @ 500 PSI PUMP 30 BBLS 10# BW W/ FULL RETURNS AT SURF ON 8-5/8" INTER – CSG & 13-3/8" SURF – CSG / 3rd PLUG) SPACER PLUG PERF @ 5150' SQZ 35 SXS CLASS C CMT / 14.8# 1.32 YIELD / W/ (R-1-11-P 2% CALCIUM CHLORIDE) / 8.22 BBLS SLURRY / (PLUG CAP 150' / 3.48 BBLS SLURRY / 14.8 SXS IN 5.5" PROD CSG) & (PLUG CAP 150' / 4.74 BBLS SLURRY / 20.2 SXS IN 7-7/8" OPEN HOLE) / DISPLACE TOC TO 5000' / DISPLACE W/ 34.37 BBLS 10# BW / ISIP = 0 PSI
2/4/2025	SECURE WELL WOC TO TAG
2/4/2025	UNSEAT 5.5" PKR RIH W/ 2-7/8" WS TBG TAG TOC @ 4982' (TMD) W/ 160 JTS IN THE HOLE 15' IN ON JT# 161
2/4/2025	POOH W/ 5 STANDS LD 65 JTS 2-7/8" WS TBG SET PKR @ 2673' (TMD) W/ 86 JTS IN THE HOLE
2/4/2025	LOAD BACK SIDE W/ 4 BBLS TEST PKR TO 500 PSI
2/4/2025	RU WL MAKE UP & RIH W/ BHA TO 3775' SHOT 6 SQZ HOLES / POOH W/ WL BHA LD GUN VERIFIED ASF RDMO WL
2/4/2025	EST – INJ RATE @ 2.5 BPM @ 300 PSI W/ FULL RETURNS AT SURF ON 8-5/8" INTER – CSG & 13-3/8" SURF – CSG / KEEP PUMPING BOTTOMS UP F/ 3775' TO SURF TO GET GAS & TRASH OUT CIRC A TOTAL OF 150 BBLS 10# BW / 4TH PLUG) PERF @ 3775' SQZ 291 SXS CLASS C CMT / 14.8# 1.32 YIELD / 68.41 BBLS SLURRY / DISPLACE TOC TO 2973' / DISPLACE W/ 22.36 BBLS 10# BW / ISIP = 300 PSI
2/4/2025	SECURE WELL SDFN
2/4/2025	CREW TRAVEL BACK TO MAN CAMP
2/5/2025	CREW TRAVEL TO LOCATION

2/5/2025	HPJSM WITH ALL PERSONAL ON LOCATION
2/5/2025	PERFORMED DAILY START UP RIG INSPECTION
2/5/2025	SET CO/FO & FUNCTION TEST
2/5/2025	CHECK PSI ON WELL ALL STRINGS = 0 PSI
2/5/2025	OPEN WELL UNSEAT 5.5" PKR RIH W/ 2-7/8" WS TBG TAG TOC @ 2958' (TMD) W/ 95 JTS IN THE HOLE 5' IN ON JT# 96
2/5/2025	POOH LD 95 JTS 2-7/8" WS TBG
2/5/2025	SET PKR @ 38' W/ 1 JT IN THE HOLE / TEST PKR TO 500 PSI W/ A GOOD TEST
2/5/2025	MIRU RTX WL RU PCE / MAKE UP & RIH W/ BHA TO 400' SHOT 6 SQZ HOLES POOH W/ WL BHA LD GUN VERIFIED ASF RDMO RTX WL
2/5/2025	RU PUMP ON TBG EST – INJ RATE @ 2 BPM @ 150 PSI PUMP 20 BBLS 10# BW W/ FULL RET AT SURF ON 8-5/8" INTER – CSG & 13-3/8" SURF – CSG
2/5/2025	UNSEAT & LD 5.5 AS1 PKR & 1 JT 2-7/8" TBG
2/5/2025	RD WORK FLOOR & ASSOCIATED EQUIP
2/5/2025	ND 5K HYD BOP
2/5/2025	NU 5K X 7-1/16" B-1 WH FLANGE
2/5/2025	RU BULK TRK & LOAD BULK TRK W/ 200 SXS CL C CMT / RU CMT PUMP ON 5.5" PROD CSG BREAK CIRC W/ 10 BBLS 10# BW 5TH PLUG) PERF @ 400' SQZ 120 SXS CLASS C CMT / 14.8# 1.32 YIELD / 28.21 BBLS SLURRY / (PLUG CAP 490' / 9.28 BBLS SLURRY / 39.47 SXS IN 5.5" PROD CSG) & (PLUG CAP 490' / 18.93 BBLS SLURRY / 80.53 SXS IN 8-5/8" INTER CSG) F/ 400' – 0' (SURF) GOT FULL RETURNS ON 8-5/8" INTER – CSG CLOSE VALVE / GOT FULL RETURNS ON THE 13-3/8" SURF – CSG CLOSE VALVE AND LEFT 500 PSI ON PROD CSG, W/ NO LEAK OFF / WOC TOP OFF HOLE W/ CMT VERIFY CMT AT SURF
2/5/2025	RDMO PU & P&A PUMP ASSOCIATED EQUIP, CLEAN LOC P&A JOB COMPLETED / STAGED ALL P&A EQUIP TO SIDE OF LOC READY TO MOVE TO NEXT LOC (WELL READY FOR CUT & CAP) SECURE WELL SDFN
2/5/2025	CREW TRAVEL BACK TO MAN CAMP
3/6/2025	CUT & CAP COMPLETED ON 3/6/2025



Sante Fe Main Office  
Phone: (505) 476-3441

General Information  
Phone: (505) 629-6116

Online Phone Directory  
<https://www.emnrd.nm.gov/ocd/contact-us>

State of New Mexico  
Energy, Minerals and Natural Resources  
Oil Conservation Division  
1220 S. St Francis Dr.  
Santa Fe, NM 87505

CONDITIONS

Action 455800

CONDITIONS

Operator: OXY USA WTP LIMITED PARTNERSHIP P.O. Box 4294 Houston, TX 772104294	OGRID: 192463
	Action Number: 455800
	Action Type: [C-103] Sub. Plugging (C-103P)

CONDITIONS

Created By	Condition	Condition Date
gcordero	Clean Location in accordance with 19.15.25.10 NMAC.	4/30/2025
gcordero	Submit C-103Q within one year of plugging.	4/30/2025