

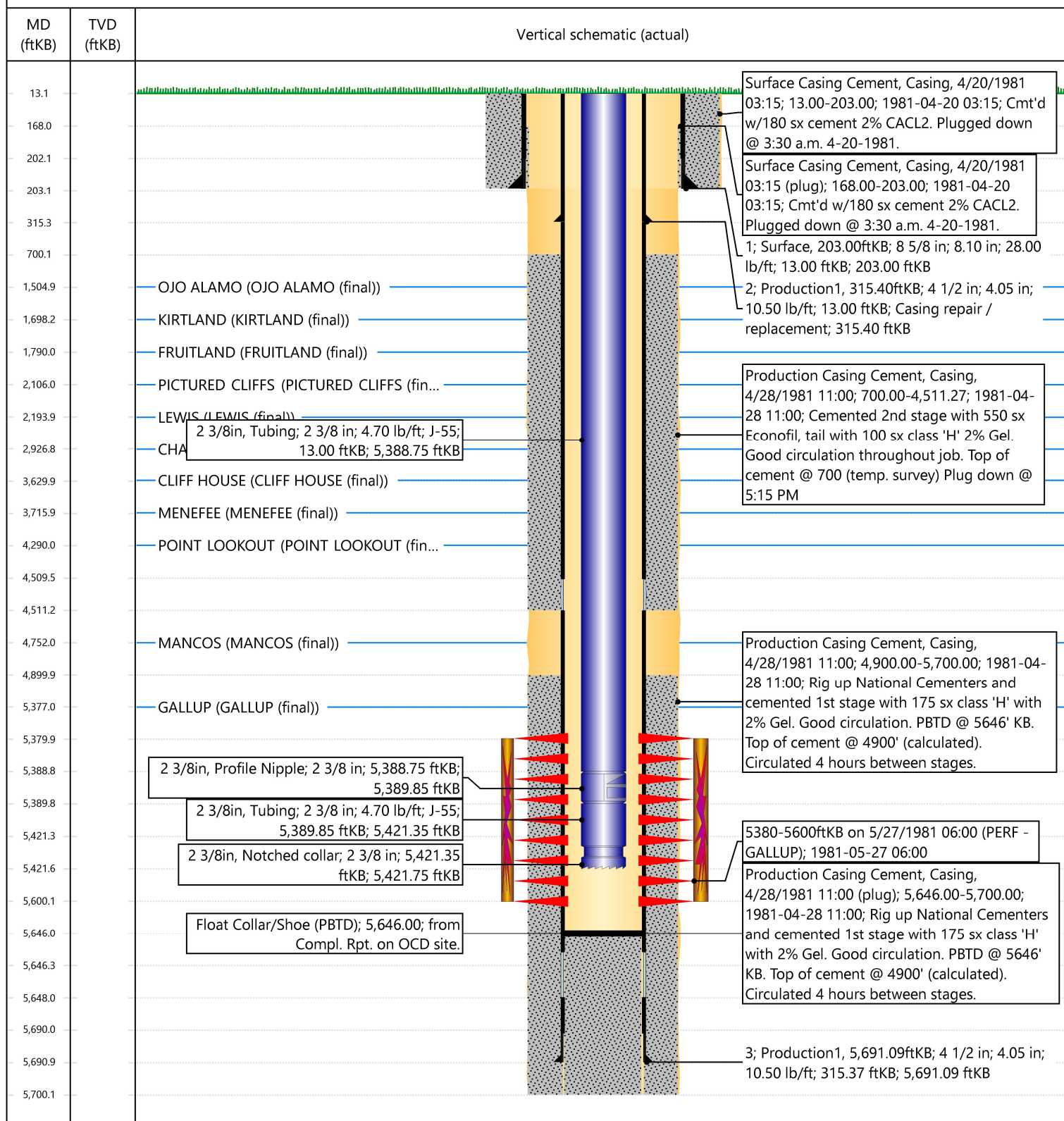


Current Schematic - Version 3

Well Name: CANYON LARGO UNIT #304

API / UWI 3003922687	Surface Legal Location C-11-24N-6W	Field Name	Route 1409	State/Province NEW MEXICO	Well Configuration Type Vertical
Ground Elevation (ft) 6,415.00	Original KB/RT Elevation (ft) 6,428.00	Tubing Hanger Elevation (ft)	RKB to GL (ft) 13.00	KB-Casing Flange Distance (ft)	KB-Tubing Hanger Distance (ft)
Tubing Strings					
Run Date 6/22/2007 06:00	Set Depth (ftKB) 5,421.75	String Max Nominal OD (in) 2 3/8	String Min Nominal ID (in) 2.00	Weight/Length (lb/ft) 4.70	Original Spud Date 4/19/1981 21:15

Original Hole, CANYON LARGO UNIT #304 [Vertical]



Sante Fe Main Office
Phone: (505) 476-3441

General Information
Phone: (505) 629-6116

Online Phone Directory
<https://www.emnrd.nm.gov/ocd/contact-us>

State of New Mexico
Energy, Minerals and Natural Resources
Oil Conservation Division
1220 S. St Francis Dr.
Santa Fe, NM 87505

CONDITIONS

Action 470719

CONDITIONS

Operator: HILCORP ENERGY COMPANY 1111 Travis Street Houston, TX 77002	OGRID: 372171
	Action Number: 470719
	Action Type: [UF-WBS] Wellbore Schematic (WELLBORE SCHEMATICS)

CONDITIONS

Created By	Condition	Condition Date
mkuehling	None	6/4/2025