

Form 3160-3
(June 2015)UNITED STATES
DEPARTMENT OF THE INTERIOR
BUREAU OF LAND MANAGEMENT

APPLICATION FOR PERMIT TO DRILL OR REENTER

FORM APPROVED
OMB No. 1004-0137
Expires: January 31, 20185. Lease Serial No.
NMNM104699

6. If Indian, Allottee or Tribe Name

7. If Unit or CA Agreement, Name and No.

8. Lease Name and Well No.
MACHO MAN 18/19 FED COM
528H9. API Well No.
30-025-5473410. Field and Pool, or Exploratory
MESCALERO ESCARPE/BONE SPRING11. Sec., T. R. M. or Blk. and Survey or Area
SEC 18/T18S/R34E/NMP1a. Type of work: ☒ DRILL ☐ REENTER
1b. Type of Well: ☒ Oil Well ☐ Gas Well ☐ Other
1c. Type of Completion: ☐ Hydraulic Fracturing ☒ Single Zone ☐ Multiple Zone2. Name of Operator
MEWBOURNE OIL COMPANY3a. Address
P O BOX 5270, HOBBS, NM 882413b. Phone No. (include area code)
(575) 393-59054. Location of Well (Report location clearly and in accordance with any State requirements. *)
At surface SWNE / 2330 FNL / 2540 FEL / LAT 32.7485803 / LONG -103.5993737
At proposed prod. zone SESE / 100 FSL / 660 FEL / LAT 32.7262485 / LONG -103.593244614. Distance in miles and direction from nearest town or post office*
10 miles12. County or Parish
EDDY13. State
NM15. Distance from proposed*
location to nearest
property or lease line, ft.
(Also to nearest drig. unit line, if any)
100 feet

16. No of acres in lease

17. Spacing Unit dedicated to this well
240.018. Distance from proposed location*
to nearest well, drilling, completed,
applied for, on this lease, ft.
20 feet19. Proposed Depth
10037 feet / 17949 feet20. BLM/BIA Bond No. in file
FED: NM169321. Elevations (Show whether DF, KDB, RT, GL, etc.)
4079 feet22. Approximate date work will start*
12/25/202423. Estimated duration
60 days

24. Attachments

The following, completed in accordance with the requirements of Onshore Oil and Gas Order No. 1, and the Hydraulic Fracturing rule per 43 CFR 3162.3-3 (as applicable)

1. Well plat certified by a registered surveyor.
2. A Drilling Plan.
3. A Surface Use Plan (if the location is on National Forest System Lands, the SUPO must be filed with the appropriate Forest Service Office).

4. Bond to cover the operations unless covered by an existing bond on file (see Item 20 above).
5. Operator certification.
6. Such other site specific information and/or plans as may be requested by the BLM.

25. Signature
(Electronic Submission)Name (Printed/Typed)
BRADLEY BISHOP / Ph: (575) 393-5905Date
10/29/2024Title
RegulatoryApproved by (Signature)
(Electronic Submission)Name (Printed/Typed)
CODY LAYTON / Ph: (575) 234-5959Date
05/09/2025Title
Assistant Field Manager Lands & MineralsOffice
Carlsbad Field Office

Application approval does not warrant or certify that the applicant holds legal or equitable title to those rights in the subject lease which would entitle the applicant to conduct operations thereon.

Conditions of approval, if any, are attached.

Title 18 U.S.C. Section 1001 and Title 43 U.S.C. Section 1212, make it a crime for any person knowingly and willfully to make to any department or agency of the United States any false, fictitious or fraudulent statements or representations as to any matter within its jurisdiction.

(Continued on page 2)

*(Instructions on page 2)



| | | | |
|--|---|----------------------|---|
| C-102 Submit Electronically Via OCD Permitting | State of New Mexico Energy, Minerals & Natural Resources Department OIL CONSERVATION DIVISION | Revised July 9, 2024 | |
| | | Submittal Type: | <input checked="" type="checkbox"/> Initial Submittal |
| | | | <input type="checkbox"/> Amended Report |
| | | | <input type="checkbox"/> As Drilled |

WELL LOCATION INFORMATION

| | | |
|--|---|--|
| API Number 30-025-54734 | Pool Code 45793 | Pool Name MESCALERO ESCARPE; BONE SPRING |
| Property Code 337330 | Property Name MACHO MAN 18/19 FED COM | Well Number 528H |
| OGRID No. 14744 | Operator Name MEWBOURNE OIL COMPANY | Ground Level Elevation 4079' |
| Surface Owner: <input checked="" type="checkbox"/> State <input type="checkbox"/> Fee <input type="checkbox"/> Tribal <input type="checkbox"/> Federal | | Mineral Owner: <input type="checkbox"/> State <input type="checkbox"/> Fee <input type="checkbox"/> Tribal <input checked="" type="checkbox"/> Federal |

Surface Location

| | | | | | | | | | |
|----------------|----------------------|------------------------|---------------------|-----|---------------------------------|---------------------------------|---------------------------------|-----------------------------------|----------------------|
| UL G | Section 18 | Township 18S | Range 34E | Lot | Ft. from N/S 2330 FNL | Ft. from E/W 2520 FEL | Latitude 32.7485803°N | Longitude 103.5993737°W | County LEA |
|----------------|----------------------|------------------------|---------------------|-----|---------------------------------|---------------------------------|---------------------------------|-----------------------------------|----------------------|

Bottom Hole Location

| | | | | | | | | | |
|----------------|----------------------|------------------------|---------------------|-----|--------------------------------|--------------------------------|---------------------------------|-----------------------------------|----------------------|
| UL P | Section 19 | Township 18S | Range 34E | Lot | Ft. from N/S 100 FSL | Ft. from E/W 660 FEL | Latitude 32.7262485°N | Longitude 103.5932446°W | County LEA |
|----------------|----------------------|------------------------|---------------------|-----|--------------------------------|--------------------------------|---------------------------------|-----------------------------------|----------------------|

| | | | | |
|-------------------------------|--|-------------------|--|----------------------------------|
| Dedicated Acres 240 | Infill or Defining Well DEFINING | Defining Well API | Overlapping Spacing Unit (Y/N) N | Consolidation Code N/A |
| Order Numbers. | | | Well setbacks are under Common Ownership: <input type="checkbox"/> Yes <input type="checkbox"/> No | |

Kick Off Point (KOP)

| | | | | | | | | | |
|----------------|----------------------|------------------------|---------------------|-----|---------------------------------|--------------------------------|---------------------------------|-----------------------------------|----------------------|
| UL H | Section 18 | Township 18S | Range 34E | Lot | Ft. from N/S 2167 FNL | Ft. from E/W 660 FEL | Latitude 32.7490366°N | Longitude 103.5933275°W | County LEA |
|----------------|----------------------|------------------------|---------------------|-----|---------------------------------|--------------------------------|---------------------------------|-----------------------------------|----------------------|

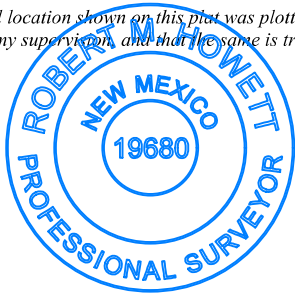
First Take Point (FTP)

| | | | | | | | | | |
|----------------|----------------------|------------------------|---------------------|-----|---------------------------------|--------------------------------|---------------------------------|-----------------------------------|----------------------|
| UL I | Section 18 | Township 18S | Range 34E | Lot | Ft. from N/S 2540 FSL | Ft. from E/W 660 FEL | Latitude 32.7474620°N | Longitude 103.5933207°W | County LEA |
|----------------|----------------------|------------------------|---------------------|-----|---------------------------------|--------------------------------|---------------------------------|-----------------------------------|----------------------|

Last Take Point (LTP)

| | | | | | | | | | |
|----------------|----------------------|------------------------|---------------------|-----|--------------------------------|--------------------------------|---------------------------------|-----------------------------------|----------------------|
| UL P | Section 19 | Township 18S | Range 34E | Lot | Ft. from N/S 100 FSL | Ft. from E/W 660 FEL | Latitude 32.7262485°N | Longitude 103.5932446°W | County LEA |
|----------------|----------------------|------------------------|---------------------|-----|--------------------------------|--------------------------------|---------------------------------|-----------------------------------|----------------------|

| | | |
|---|--|-------------------------|
| Unitized Area or Area of Uniform Interest | Spacing Unit Type <input checked="" type="checkbox"/> Horizontal <input type="checkbox"/> Vertical | Ground Floor Elevation: |
|---|--|-------------------------|

| | | | |
|--|--|--|-------------------------------------|
| OPERATOR CERTIFICATIONS <i>I hereby certify that the information contained herein is true and complete to the best of my knowledge and belief, and, if the well is a vertical or directional well, that this organization either owns a working interest or unleased mineral interest in the land including the proposed bottom hole location or has a right to drill this well at this location pursuant to a contract with an owner of a working interest or unleased mineral interest, or to a voluntary pooling agreement or a compulsory pooling order heretofore entered by the division.</i> <i>If this well is a horizontal well, I further certify that this organization has received the consent of at least one lessee or owner of a working interest or unleased mineral interest in each tract (in the target pool or formation) in which any part of the well's completed interval will be located or obtained a compulsory pooling order from the division.</i> <i>Brett Miller</i> 10/22/2024 | | SURVEYOR CERTIFICATIONS <i>I hereby certify that the well location shown on this plat was plotted from field notes of actual surveys made by me under my supervision, and that the same is true and correct to the best of my belief.</i>  | |
| Signature Brett Miller | | Signature and Seal of Professional Surveyor <i>Robert M. Howett</i> | |
| Printed Name brett.miller@mewbourne.com | | Certificate Number 19680 | Date of Survey 02/09/2024 |
| Email Address | | | |

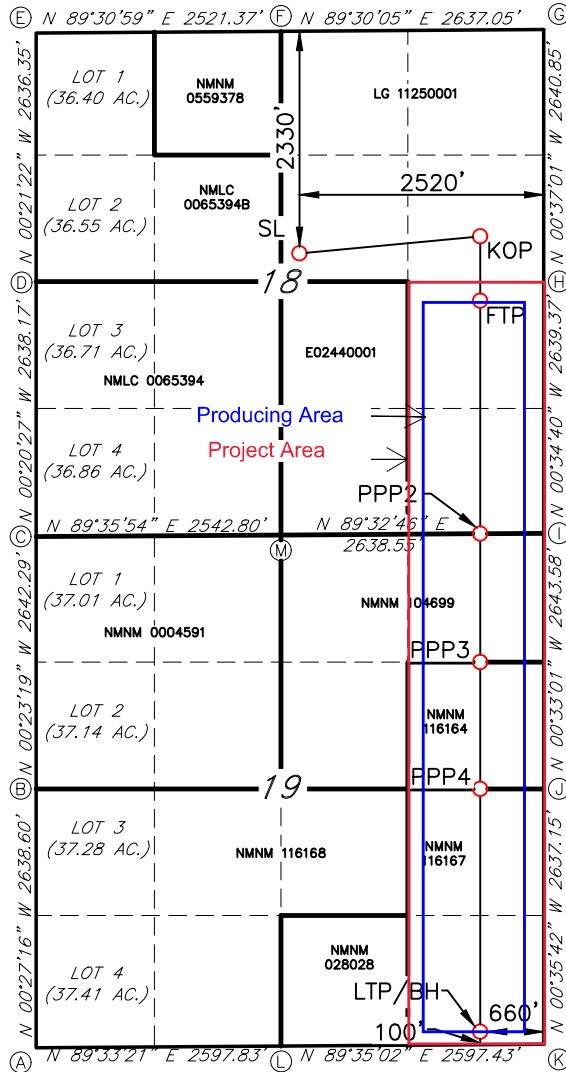
Note: No allowable will be assigned to this completion until all interests have been consolidated or a non-standard unit has been approved by the division.

ACREAGE DEDICATION PLATS

This grid represents a standard section. You may superimpose a non-standard section, or larger area, over this grid. Operators must outline the dedicated acreage in a red box, clearly show the well surface location and bottom hole location, if it is a directionally drilled, with the dimensions from the section lines in the cardinal directions. If this is a horizontal wellbore show on this plat the location of the First Take Point and Last Take Point, and the point within the Completed interval (other than the First Take Point or Last Take Point) that is closest to any outer boundary of the tract.

Surveyors shall use the latest United States government survey or dependent resurvey. Well locations will be in reference to the New Mexico Principal Meridian. If the land is not surveyed, contact the OCD Engineering Bureau. Independent subdivision surveys will not be acceptable.

MACHO MAN 18/19 FED COM #528H



GEODETIC DATA

NAD 83 GRID - NM EAST

SURFACE LOCATION (SL)

N: 636847.2 - E: 766990.9

LAT: 32.7485803° N

LONG: 103.5993737° W

KICK OFF POINT (KOP)

2167' FNL & 660' FEL (SEC.18)

N: 637026.1 - E: 768848.7

LAT: 32.7490366° N

LONG: 103.5933275° W

FIRST TAKE POINT (FTP)

2540' FSL & 660' FEL (SEC.18)

N: 636453.3 - E: 768854.8

LAT: 32.7474620° N

LONG: 103.5933207° W

PROPOSED PENETRATION POINT 2 (PPP2)

0' FNL & 660' FEL (SEC.19)

N: 633914.4 - E: 768880.2

LAT: 32.7404836° N

LONG: 103.5932957° W

CORNER DATA

NAD 83 GRID - NM EAST

A: CALCULATED CORNER

N: 628601.3 - E: 764398.9

B: FOUND BRASS CAP "1913"

N: 631239.2 - E: 764378.0

C: FOUND 1" PIPE

N: 633880.9 - E: 764360.1

D: FOUND 2" PIPE

N: 636518.5 - E: 764344.4

E: FOUND BRASS CAP "1913"

N: 639154.2 - E: 764328.0

F: FOUND BRASS CAP "1913"

N: 639175.5 - E: 766848.8

G: FOUND BRASS CAP "1913"

N: 639198.4 - E: 769485.2

PROPOSED PENETRATION POINT 3 (PPP3)

1322' FNL & 660' FEL (SEC.19)

N: 632593.2 - E: 768893.4

LAT: 32.7368521° N

LONG: 103.5932826° W

PROPOSED PENETRATION POINT 4 (PPP4)

2637' FSL & 659' FEL (SEC.19)

N: 631272.0 - E: 768906.7

LAT: 32.7332205° N

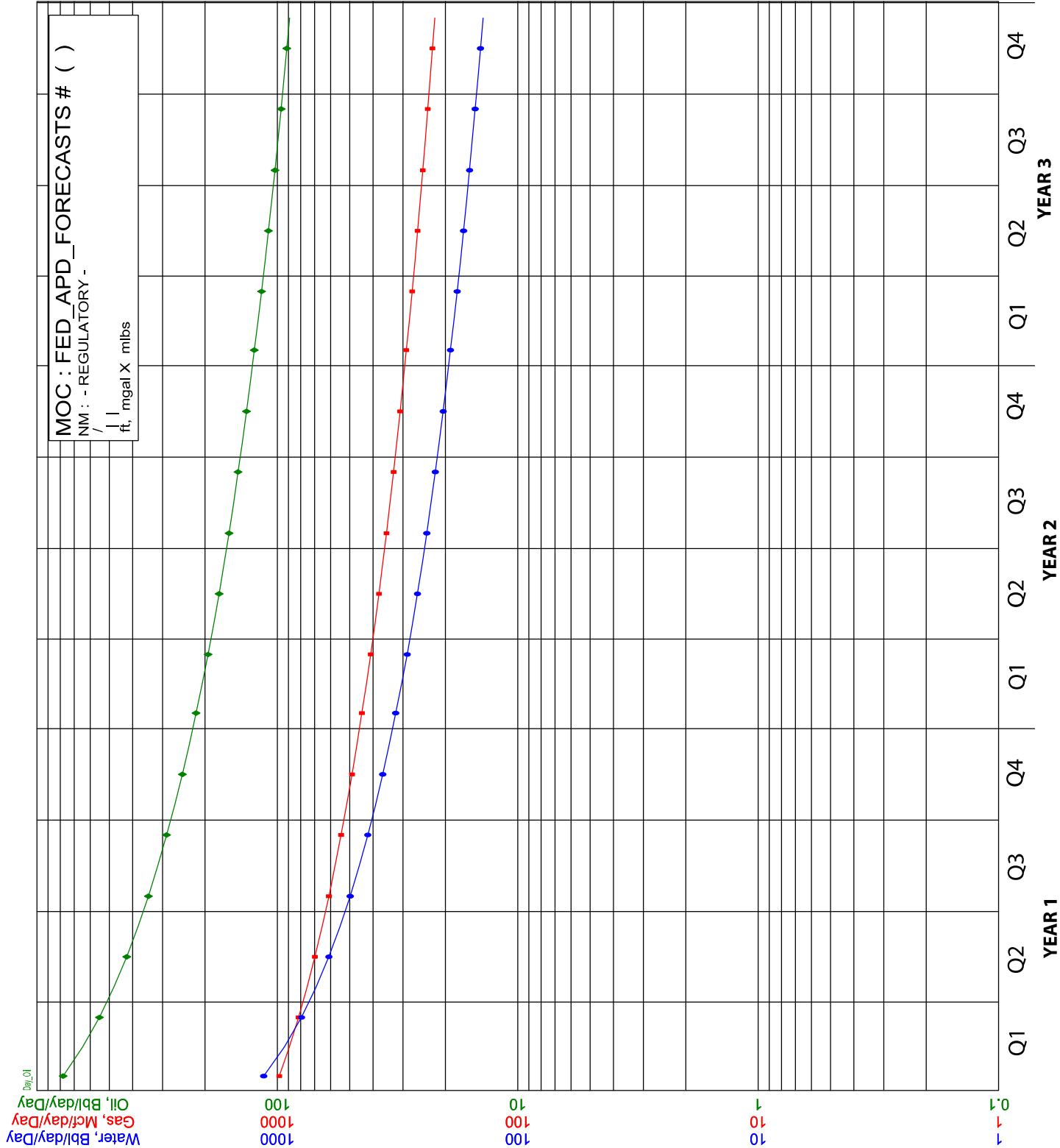
LONG: 103.5932696° W

LAST TAKE POINT/BOTTOM HOLE (LTP/BH)

N: 628735.5 - E: 768932.1

LAT: 32.7262485° N

LONG: 103.5932446° W



Page 5

State of New Mexico
Energy, Minerals and Natural Resources Department

Submit Electronically
Via E-permitting

Oil Conservation Division
1220 South St. Francis Dr.
Santa Fe, NM 87505

NATURAL GAS MANAGEMENT PLAN

This Natural Gas Management Plan must be submitted with each Application for Permit to Drill (APD) for a new or recompleted well.

Section 1 – Plan Description

Effective May 25, 2021

I. Operator: Mewbourne Oil Co. **OGRID:** 14744 **Date:** 10/24/24

II. Type: ☒ Original ☐ Amendment due to ☐ 19.15.27.9.D(6)(a) NMAC ☐ 19.15.27.9.D(6)(b) NMAC ☐ Other.

If Other, please describe: _____

III. Well(s): Provide the following information for each new or recompleted well or set of wells proposed to be drilled or proposed to be recompleted from a single well pad or connected to a central delivery point.

| Well Name | API | ULSTR | Footages | Anticipated Oil BBL/D | Anticipated Gas MCF/D | Anticipated Produced Water BBL/D |
|------------------------------|-----|--------------|-----------------------|-----------------------|-----------------------|----------------------------------|
| MACHO MAN 18/19 FED COM 528H | | G 18 18S 34E | 2330' FNL x 2520' FEL | 1500 | 1000 | 2500 |
| | | | | Y1-400 Y2-300 Y3-200 | Y1-800 Y2-600 Y3-400 | Y1-500 Y2-400 Y3-250 |

IV. Central Delivery Point Name: MACHO MAN 18/19 FED COM 528H [See 19.15.27.9(D)(1) NMAC]

V. Anticipated Schedule: Provide the following information for each new or recompleted well or set of wells proposed to be drilled or proposed to be recompleted from a single well pad or connected to a central delivery point.

| Well Name | API | Spud Date | TD Reached Date | Completion Commencement Date | Initial Flow Back Date | First Production Date |
|------------------------------|-----|-----------|-----------------|------------------------------|------------------------|-----------------------|
| MACHO MAN 18/19 FED COM 528H | | 2/24/25 | 3/24/25 | 4/24/25 | 5/9/25 | 5/14/25 |
| | | | | | | |

VI. Separation Equipment: ☒ Attach a complete description of how Operator will size separation equipment to optimize gas capture.

VII. Operational Practices: ☒ Attach a complete description of the actions Operator will take to comply with the requirements of Subsection A through F of 19.15.27.8 NMAC.

VIII. Best Management Practices: ☒ Attach a complete description of Operator's best management practices to minimize venting during active and planned maintenance.

Section 2 – Enhanced Plan

EFFECTIVE APRIL 1, 2022

Beginning April 1, 2022, an operator that is not in compliance with its statewide natural gas capture requirement for the applicable reporting area must complete this section.

☒ Operator certifies that it is not required to complete this section because Operator is in compliance with its statewide natural gas capture requirement for the applicable reporting area.

IX. Anticipated Natural Gas Production:

| Well | API | Anticipated Average Natural Gas Rate MCF/D | Anticipated Volume of Natural Gas for the First Year MCF |
|------|-----|--|--|
| | | | |
| | | | |

X. Natural Gas Gathering System (NGGS):

| Operator | System | ULSTR of Tie-in | Anticipated Gathering Start Date | Available Maximum Daily Capacity of System Segment Tie-in |
|----------|--------|-----------------|----------------------------------|---|
| | | | | |
| | | | | |

XI. Map. ☐ Attach an accurate and legible map depicting the location of the well(s), the anticipated pipeline route(s) connecting the production operations to the existing or planned interconnect of the natural gas gathering system(s), and the maximum daily capacity of the segment or portion of the natural gas gathering system(s) to which the well(s) will be connected.

XII. Line Capacity. The natural gas gathering system ☐ will ☐ will not have capacity to gather 100% of the anticipated natural gas production volume from the well prior to the date of first production.

XIII. Line Pressure. Operator ☐ does ☐ does not anticipate that its existing well(s) connected to the same segment, or portion, of the natural gas gathering system(s) described above will continue to meet anticipated increases in line pressure caused by the new well(s).

☐ Attach Operator's plan to manage production in response to the increased line pressure.

XIV. Confidentiality: ☐ Operator asserts confidentiality pursuant to Section 71-2-8 NMSA 1978 for the information provided in Section 2 as provided in Paragraph (2) of Subsection D of 19.15.27.9 NMAC, and attaches a full description of the specific information for which confidentiality is asserted and the basis for such assertion.

Section 3 - Certifications

Effective May 25, 2021

Operator certifies that, after reasonable inquiry and based on the available information at the time of submittal:

☒ Operator will be able to connect the well(s) to a natural gas gathering system in the general area with sufficient capacity to transport one hundred percent of the anticipated volume of natural gas produced from the well(s) commencing on the date of first production, taking into account the current and anticipated volumes of produced natural gas from other wells connected to the pipeline gathering system; or

☐ Operator will not be able to connect to a natural gas gathering system in the general area with sufficient capacity to transport one hundred percent of the anticipated volume of natural gas produced from the well(s) commencing on the date of first production, taking into account the current and anticipated volumes of produced natural gas from other wells connected to the pipeline gathering system.

If Operator checks this box, Operator will select one of the following:

Well Shut-In. ☐ Operator will shut-in and not produce the well until it submits the certification required by Paragraph (4) of Subsection D of 19.15.27.9 NMAC; or

Venting and Flaring Plan. ☐ Operator has attached a venting and flaring plan that evaluates and selects one or more of the potential alternative beneficial uses for the natural gas until a natural gas gathering system is available, including:

- (a) power generation on lease;
- (b) power generation for grid;
- (c) compression on lease;
- (d) liquids removal on lease;
- (e) reinjection for underground storage;
- (f) reinjection for temporary storage;
- (g) reinjection for enhanced oil recovery;
- (h) fuel cell production; and
- (i) other alternative beneficial uses approved by the division.

Section 4 - Notices

1. If, at any time after Operator submits this Natural Gas Management Plan and before the well is spud:

(a) Operator becomes aware that the natural gas gathering system it planned to connect the well(s) to has become unavailable or will not have capacity to transport one hundred percent of the production from the well(s), no later than 20 days after becoming aware of such information, Operator shall submit for OCD's approval a new or revised venting and flaring plan containing the information specified in Paragraph (5) of Subsection D of 19.15.27.9 NMAC; or

(b) Operator becomes aware that it has, cumulatively for the year, become out of compliance with its baseline natural gas capture rate or natural gas capture requirement, no later than 20 days after becoming aware of such information, Operator shall submit for OCD's approval a new or revised Natural Gas Management Plan for each well it plans to spud during the next 90 days containing the information specified in Paragraph (2) of Subsection D of 19.15.27.9 NMAC, and shall file an update for each Natural Gas Management Plan until Operator is back in compliance with its baseline natural gas capture rate or natural gas capture requirement.

2. OCD may deny or conditionally approve an APD if Operator does not make a certification, fails to submit an adequate venting and flaring plan which includes alternative beneficial uses for the anticipated volume of natural gas produced, or if OCD determines that Operator will not have adequate natural gas takeaway capacity at the time a well will be spud.

Page 8

I certify that, after reasonable inquiry, the statements in and attached to this Natural Gas Management Plan are true and correct to the best of my knowledge and acknowledge that a false statement may be subject to civil and criminal penalties under the Oil and Gas Act.

| | |
|--|-----------------------|
| Signature: | <i>Bradley Bishop</i> |
| Printed Name: | BRADLEY BISHOP |
| Title: | REGULATORY MANAGER |
| E-mail Address: | BBISHOP@MEWBOURNE.COM |
| Date: | 10/24/24 |
| Phone: | 575-393-5905 |
| OIL CONSERVATION DIVISION (Only applicable when submitted as a standalone form) | |
| Approved By: | |
| Title: | |
| Approval Date: | |
| Conditions of Approval: | |

Mewbourne Oil Company

Natural Gas Management Plan – Attachment

- VI. Separation equipment will be sized by construction engineering staff based on stated manufacturer daily throughput capacities and anticipated daily production rates to ensure adequate capacity. Closed vent system piping, compression needs, and VRUs will be sized utilizing ProMax modelling software to ensure adequate capacity for anticipated production volumes and conditions.
- VII. Mewbourne Oil Company (MOC) will take following actions to comply with the regulations listed in 19.15.27.8 :
- A. MOC will maximize the recovery of natural gas by minimizing the waste, as defined by 19.15.2 NMAC, of natural gas through venting and flaring. MOC will ensure that well(s) will be connected to a natural gas gathering system with sufficient capacity to transport natural gas. If there is no adequate takeaway for the gas, well(s) will be shut in until the natural gas gathering system is available.
 - B. All drilling operations will be equipped with a rig flare located at least 100 ft from the nearest surface hole. Rig flare will be utilized to combust any natural gas that is brought to surface during normal drilling operations. In the case of emergency venting or flaring the volumes will be estimated and reported appropriately.
 - C. During completion operations any natural gas brought to surface will be flared. Immediately following the finish of completion operations, all well flow will be directed to permanent separation equipment. Produced natural gas from separation equipment will be sent to sales. It is not anticipated that gas will not meet pipeline standards. However, if natural gas does not meet gathering pipeline quality specifications, MOC will flare the natural gas for 60 days or until the natural gas meets the pipeline quality specifications, whichever is sooner. MOC will ensure that the flare is sized properly and is equipped with automatic igniter or continuous pilot. The gas sample will analyzed twice per week and the gas will be routed into a gathering system as soon as pipeline specifications are met.
 - D. Natural gas will not be flared with the exceptions and provisions listed in the 19.15.27.8 D.(1) through (4). If there is no adequate takeaway for the separator gas, well(s) will be shut in until the natural gas gathering system is available with exception of emergency or malfunction situations. Venting and/or flaring volumes will be estimated and reported appropriately.
 - E. MOC will comply with the performance standards requirements and provisions listed in 19.15.27.8 E.(1) through (8). All equipment will be designed and sized to handle maximum anticipated pressures and throughputs in order to minimize the waste. Production storage tanks constructed after May 25, 2021 will be equipped with automatic gauging system. Flares constructed after May 25, 2021 will be equipped with automatic igniter or continuous pilot. Flares will be located at least 100' from the well and storage tanks unless otherwise approved by the division. MOC will conduct AVO inspections as described in 19.15.27.8 E (5) (a) with frequencies specified in 19.15.27.8 E (5) (b) and (c). All emergencies will be resolved as quickly and safely as feasible to minimize waste.
 - F. The volume of natural gas that is vented or flared as the result of malfunction or emergency during drilling and completions operations will be estimated. The volume of natural gas that is vented, flared or beneficially used during production operations, will be measured or estimated. MOC will install equipment to measure

the volume of natural gas flared from existing process piping or a flowline piped from equipment such as high pressure separators, heater treaters, or vapor recovery units associated with a well or facility associated with a well authorized by an APD issued after May 25, 2021 that has an average daily production greater than 60 Mcf/day. If metering is not practicable due to circumstances such as low flow rate or low pressure venting and flaring, MOC will estimate the volume of vented or flared natural gas. Measuring equipment will conform to industry standards and will not be designed or equipped with a manifold that allows the diversion of natural gas around the metering element except for the sole purpose of inspecting and servicing the measurement equipment.

- VIII. For maintenance activities involving production equipment and compression, venting will be limited to the depressurization of the subject equipment to ensure safe working conditions. For maintenance of production and compression equipment the associated producing wells will be shut in to eliminate venting. For maintenance of VRUs all gas normally routed to the VRU will be routed to flare to eliminate venting.



Drilling Plan Data Report

05/12/2025

U.S. Department of the Interior
BUREAU OF LAND MANAGEMENT

APD ID: 10400101648

Submission Date: 10/29/2024

Highlighted data
reflects the most
recent changes

Operator Name: MEWBOURNE OIL COMPANY

Well Name: MACHO MAN 18/19 FED COM

Well Number: 528H

Well Type: OIL WELL

Well Work Type: Drill

[Show Final Text](#)

Section 1 - Geologic Formations

| Formation ID | Formation Name | Elevation | True Vertical | Measured Depth | Lithologies | Mineral Resources | Producing Formatio |
|--------------|-----------------|-----------|---------------|----------------|------------------------|-------------------|--------------------|
| 15602432 | UNKNOWN | 3898 | 28 | 28 | OTHER : Topsoil | NONE | N |
| 15602433 | RUSTLER | 2093 | 1805 | 1805 | ANHYDRITE, DOLOMITE | USEABLE WATER | N |
| 15602443 | TOP SALT | 1847 | 2051 | 2051 | SALT | NONE | N |
| 15602444 | BASE OF SALT | 624 | 3274 | 3274 | SALT | NONE | N |
| 15602446 | YATES | 184 | 3714 | 3714 | SANDSTONE | NATURAL GAS, OIL | N |
| 15602447 | SEVEN RIVERS | -545 | 4443 | 4443 | DOLOMITE | NATURAL GAS, OIL | N |
| 15602448 | CAPITAN REEF | -836 | 4734 | 4734 | DOLOMITE, LIMESTONE | NONE | N |
| 15602449 | GRAYBURG | -1116 | 5014 | 5014 | DOLOMITE | NATURAL GAS, OIL | N |
| 15602453 | LAMAR | -1748 | 5646 | 5646 | DOLOMITE, LIMESTONE | NATURAL GAS, OIL | N |
| 15602440 | BONE SPRING | -3159 | 7057 | 7057 | LIMESTONE | NATURAL GAS, OIL | N |
| 15602441 | BONE SPRING 1ST | -4605 | 8503 | 8503 | SANDSTONE | NATURAL GAS, OIL | N |
| 15602451 | BONE SPRING 2ND | -5282 | 9180 | 9180 | SANDSTONE | NATURAL GAS, OIL | Y |

Section 2 - Blowout Prevention

Pressure Rating (PSI): 5M

Rating Depth: 17949

Equipment: Annular, Pipe Rams, Blind Rams, Other accessories to the BOP equipment will include a Kelly cock and floor safety valve (inside BOP) and choke lines and choke manifold. See attached schematics.

Requesting Variance? YES

Variance request: A variance is requested for the use of a flexible choke line from the BOP to the choke manifold. See attached for hydrostatic test chart. Anchors are not required by manufacturer. Variance is requested to use a multi bowl wellhead. Variance is requested to perform break testing according to attached procedure. If a breaktesting variance is approved & incorporated, API Standard 53 will be incorporated and

Operator Name: MEWBOURNE OIL COMPANY**Well Name:** MACHO MAN 18/19 FED COM**Well Number:** 528H

testing annular BOP to 70% of RWP or 100% of MASP, whichever is greater, will be performed

Testing Procedure: BOP/BOPE will be tested by an independent service company to 250 psi low and the high pressure indicated above per 43 CFR Part 3172 requirements. The System may be upgraded to a higher pressure but still tested to the working pressure listed in the table above. If the system is upgraded all the components installed will be functional and tested. Pipe rams will be operationally checked each 24 hour period. Blind rams will be operationally checked on each trip out of the hole. These checks will be noted on the daily tour sheets.

Choke Diagram Attachment:

5M_BOPE_Choke_Diagram_20241024092220.pdf

Flex_Line_Specs_API_16C_20241024092230.pdf

BOP Diagram Attachment:

5M_BOPE_Schematic_20241024092240.pdf

Multi_Bowl_WH_20241024092247.pdf

Section 3 - Casing

| Casing ID | String Type | Hole Size | Csg Size | Condition | Standard | Tapered String | Top Set MD | Bottom Set MD | Top Set TVD | Bottom Set TVD | Top Set MSL | Bottom Set MSL | Calculated casing length MD | Grade | Weight | Joint Type | Collapse SF | Burst SF | Joint SF Type | Joint SF | Body SF Type | Body SF |
|-----------|--------------|-----------|----------|-----------|----------|----------------|------------|---------------|-------------|----------------|-------------|----------------|-----------------------------|-------|--------|------------|-------------|----------|---------------|----------|--------------|---------|
| 1 | SURFACE | 17.5 | 13.375 | NEW | API | N | 0 | 1880 | 0 | 1880 | 4079 | 2199 | 1880 | J-55 | 54.5 | ST&C | 1.34 | 3.25 | DRY | 5.02 | DRY | 8.33 |
| 2 | INTERMEDIATE | 12.25 | 9.625 | NEW | API | N | 0 | 3280 | 0 | 3280 | | 799 | 3280 | J-55 | 36 | LT&C | 1.13 | 1.97 | DRY | 3.81 | DRY | 4.74 |
| 3 | INTERMEDIATE | 12.25 | 9.625 | NEW | API | N | 3280 | 3300 | 3280 | 3300 | 800 | 779 | 20 | J-55 | 40 | LT&C | 1.43 | 2.19 | DRY | 99.99 | DRY | 99.99 |
| 4 | PRODUCTION | 8.75 | 7.0 | NEW | API | N | 0 | 9321 | 0 | 9064 | | -4985 | 9321 | P-110 | 26 | LT&C | 1.4 | 2.23 | DRY | 2.89 | DRY | 3.46 |
| 5 | LINER | 6.125 | 4.5 | NEW | API | N | 9121 | 17949 | 9069 | 10037 | -4990 | -5958 | 8828 | P-110 | 13.5 | LT&C | 1.78 | 2.07 | DRY | 2.85 | DRY | 3.55 |

Casing Attachments

Operator Name: MEWBOURNE OIL COMPANY**Well Name:** MACHO MAN 18/19 FED COM**Well Number:** 528H**Casing Attachments**

Casing ID: 1 **String** SURFACE**Inspection Document:****Spec Document:****Tapered String Spec:****Casing Design Assumptions and Worksheet(s):**13.375in_54.5__J55_STC_Csg_20241024102355.pdf

Casing ID: 2 **String** INTERMEDIATE**Inspection Document:****Spec Document:****Tapered String Spec:****Casing Design Assumptions and Worksheet(s):**4.5in_13.5__P110_LTC_Csg_20241024092606.pdf

Casing ID: 3 **String** INTERMEDIATE**Inspection Document:****Spec Document:****Tapered String Spec:****Casing Design Assumptions and Worksheet(s):**7in_26__P110_LTC_Csg_20241024092422.pdf

Operator Name: MEWBOURNE OIL COMPANY

Well Name: MACHO MAN 18/19 FED COM

Well Number: 528H

Casing Attachments

Casing ID: 4 String PRODUCTION

Inspection Document:

Spec Document:

Tapered String Spec:

Casing Design Assumptions and Worksheet(s):

9.625in_36__J55_LTC_Csg_20241024092515.pdf

Casing ID: 5 String LINER

Inspection Document:

Spec Document:

Tapered String Spec:

Casing Design Assumptions and Worksheet(s):

13.375in_54.5__J55_STC_Csg_20241024092658.pdf

Section 4 - Cement

| String Type | Lead/Tail | Stage Tool Depth | Top MD | Bottom MD | Quantity(sx) | Yield | Density | Cu Ft | Excess% | Cement type | Additives |
|--------------|-----------|------------------|--------|-----------|--------------|-------|---------|-------|---------|-------------|------------------------------------|
| SURFACE | Lead | | 0 | 1688 | 1110 | 2.12 | 12.5 | 2360 | 100 | Class C | Salt, Gel, Extender, LCM |
| SURFACE | Tail | | 1688 | 1880 | 200 | 1.34 | 14.8 | 268 | 100 | Class C | Retarder |
| INTERMEDIATE | Lead | | 0 | 2603 | 470 | 2.12 | 12.5 | 1000 | 25 | Class C | Salt, Gel, Extender, LCM |
| INTERMEDIATE | Tail | | 2603 | 3300 | 200 | 1.34 | 14.8 | 268 | 25 | Class C | Retarder |
| PRODUCTION | Lead | | 3100 | 6816 | 330 | 2.12 | 12.5 | 700 | 25 | Class C | Salt, Gel, Extender, LCM, Defoamer |

Operator Name: MEWBOURNE OIL COMPANY**Well Name:** MACHO MAN 18/19 FED COM**Well Number:** 528H

| String Type | Lead/Tail | Stage Tool Depth | Top MD | Bottom MD | Quantity(sx) | Yield | Density | Cu Ft | Excess% | Cement type | Additives |
|-------------|-----------|------------------|--------|-----------|--------------|-------|---------|-------|---------|-------------|--|
| PRODUCTION | Tail | | 6816 | 9321 | 400 | 1.18 | 15.6 | 472 | 25 | Class H | Retarder |
| LINER | Lead | | 9121 | 17949 | 570 | 1.85 | 13.5 | 1060 | 25 | Class H | Salt, Gel, Fluid Loss, Retarder, Dispersant, Defoamer, Anti-settling Agent |

Section 5 - Circulating Medium

Mud System Type: Closed**Will an air or gas system be Used?** NO**Description of the equipment for the circulating system in accordance with 43 CFR 3172:****Diagram of the equipment for the circulating system in accordance with 43 CFR 3172:**

Describe what will be on location to control well or mitigate other conditions: Formation integrity test will be performed per 43 CFR Part 3172. On Exploratory wells or on that portion of any well approved for a 5M BOPE system or greater, a pressure integrity test of each casing shoe shall be performed. Will be tested in accordance with 43 CFR Part 3172.

Describe the mud monitoring system utilized: Pason/PVT/Visual Monitoring

Circulating Medium Table

| Top Depth | Bottom Depth | Mud Type | Min Weight (lbs/gal) | Max Weight (lbs/gal) | Density (lbs/cu ft) | Gel Strength (lbs/100 sqft) | PH | Viscosity (CP) | Salinity (ppm) | Filtration (cc) | Additional Characteristics |
|-----------|--------------|-----------------|----------------------|----------------------|---------------------|-----------------------------|----|----------------|----------------|-----------------|----------------------------|
| 0 | 1880 | SPUD MUD | 8.4 | 8.6 | | | | | | | |
| 1880 | 3300 | SALT SATURATED | 9.5 | 10.5 | | | | | | | |
| 3300 | 9321 | WATER-BASED MUD | 8.6 | 9.5 | | | | | | | |
| 9321 | 17949 | OIL-BASED MUD | 10 | 11.5 | | | | | | | |

Operator Name: MEWBOURNE OIL COMPANY**Well Name:** MACHO MAN 18/19 FED COM**Well Number:** 528H

Section 6 - Test, Logging, Coring

List of production tests including testing procedures, equipment and safety measures:

Will run GR/CNL from KOP (9321') to surface (horizontal well vertical portion of hole). Stated logs run will be in the Completion Report and submitted to the BLM

List of open and cased hole logs run in the well:

DIRECTIONAL SURVEY, MEASUREMENT WHILE DRILLING, MUD LOG/GEOLOGIC LITHOLOGY LOG, GAMMA RAY LOG,

Coring operation description for the well:

None

Section 7 - Pressure

Anticipated Bottom Hole Pressure: 6002**Anticipated Surface Pressure:** 3793**Anticipated Bottom Hole Temperature(F):** 140**Anticipated abnormal pressures, temperatures, or potential geologic hazards?** NO**Describe:****Contingency Plans geohazards description:****Contingency Plans geohazards****Hydrogen Sulfide drilling operations plan required?** YES**Hydrogen sulfide drilling operations**

H2S_Plan_20241024093351.pdf

Section 8 - Other Information

Proposed horizontal/directional/multi-lateral plan submission:

MACHO_MAN_18_19_FED_COM_528H_dir_plan_20241024102707.pdf

MACHO_MAN_18_19_FED_COM_528H_dir_plot_20241024102717.pdf

Other proposed operations facets description:

Mewbourne Oil Company also requests approval to implement Design B as described below. BLM will be notified of elected design.

Other proposed operations facets attachment:

LEABS1.5_20241024093659.pdf

MACHO_MAN_18_19_FED_COM_528H_NGMP_20241024102733.pdf

Macho_Man_18_19_Fed_Com_528H_Drlg_Program_20241024102741.pdf

Macho_Man_18_19_Fed_Com_528H_AddInfo_20241024102747.pdf

Other Variance request(s)?: Y

Operator Name: MEWBOURNE OIL COMPANY

Well Name: MACHO MAN 18/19 FED COM

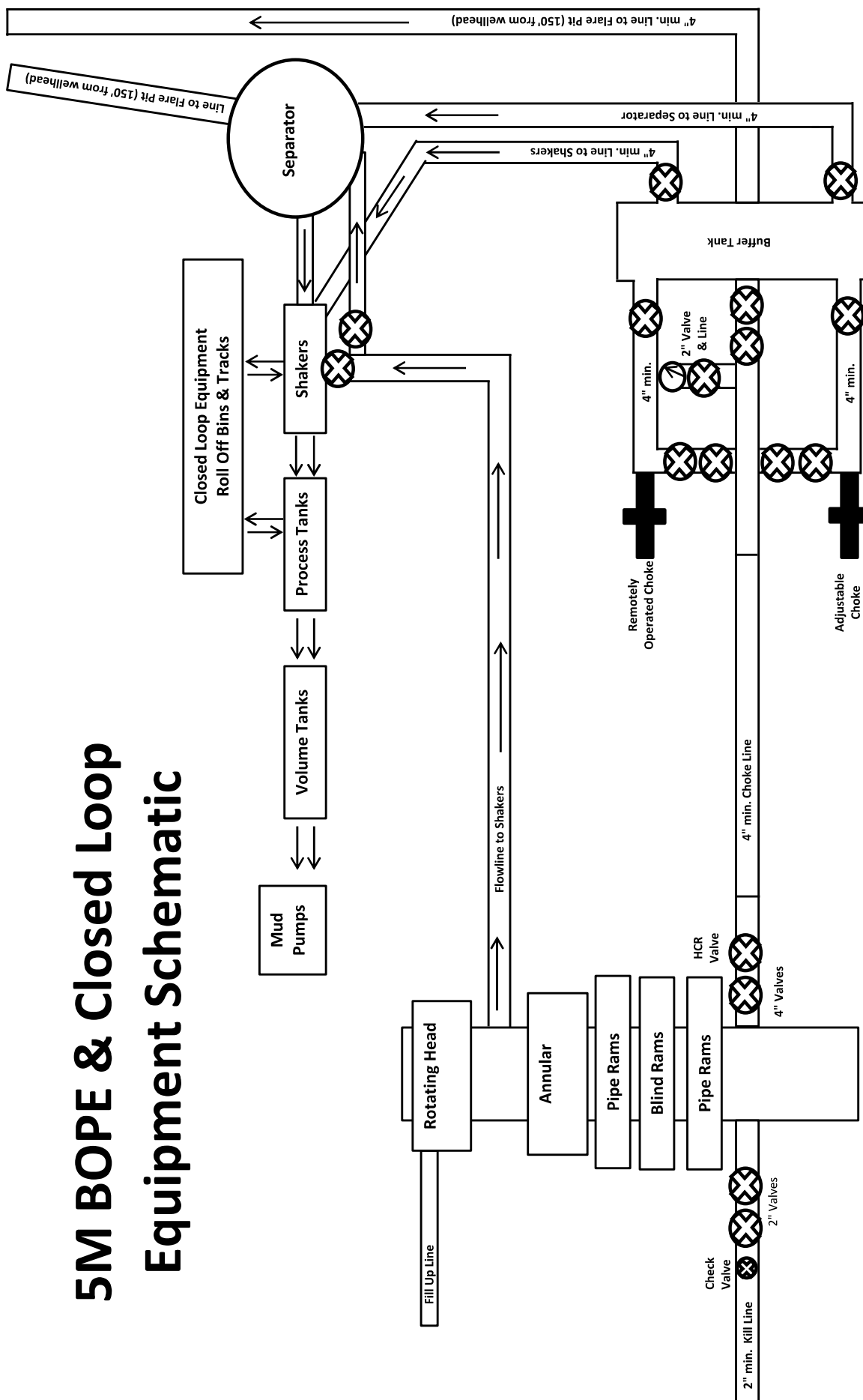
Well Number: 528H

Other Variance attachment:

MOC_Break_Testing_Variance_20241024093721.pdf

MOC_Offline_Cementing_Variance_20241024093726.pdf

5M BOPE & Closed Loop Equipment Schematic



Drawing not to scale



LUOHE LETONE HYDRAULICS TECHNOLOGY CO.,LTD

HYDROSTATIC TESTING REPORT

LTTY/QR-5.7.1-28

No: 230826015

| | | | |
|----------------------------|--|-----------------|--------------------------------------|
| Product Name | Choke And Kill Hose | Standard | API Spec 16C 3 rd edition |
| Product Specification | 3"×10000psi×60ft (18.29m) | Serial Number | 7660144 |
| Inspection Equipment | MTU-BS-1600-3200-E | Test medium | Water |
| Inspection Department | Q.C. Department | Inspection Date | 2023.08.26 |
| Rate of length change | | | |
| Standard requirements | At working pressure ,the rate of length change should not more than ±2% | | |
| Testing result | 10000psi (69.0MPa) ,Rate of length change 0.7% | | |
| Hydrostatic testing | | | |
| Standard requirements | At 1.5 times working pressure, the initial pressure-holding period of not less than three minutes, the second pressure-holding period of not less than one hour, no leaks. | | |
| Testing result | 15000psi (103.5MPa), 3 min for the first time, 60 min for the second time, no leakage | | |
| Graph of pressure testing: | | | |
| | | | |
| Conclusion | The inspected items meet standard requirements of API Spec 16C 3 rd edition | | |
| Approver | Jiaolong Chen | Auditor | Huiling Dong |
| Inspector | Zhansheng Wang | | |



LUOHE LETONE HYDRAULICS TECHNOLOGY CO.,LTD

CERTIFICATE OF QUALITY

LTTY/QR-5.7.1-19B

No: LT2023-126-002

| | | | |
|-----------------------|---------------------------|-----------------|--------------------------------------|
| Customer Name | Austin Hose | | |
| Product Name | Choke And Kill Hose | | |
| Product Specification | 3"×10000psi×60ft (18.29m) | Quantity | 2PCS |
| Serial Number | 7660143~7660144 | FSL | FSL3 |
| Temperature Range | -29℃~+121℃ | Standard | API Spec 16C 3 rd edition |
| Inspection Department | Q.C. Department | Inspection date | 2023.08.26 |

| Inspection Items | | Inspection results | | | |
|--|---------------|--|--------------|-----------|----------------|
| Appearance Checking | | In accordance with API Spec 16C 3 rd edition | | | |
| Size and Lengths | | In accordance with API Spec 16C 3 rd edition | | | |
| Dimensions and Tolerances | | In accordance with API Spec 16C 3 rd edition | | | |
| End Connections: 4-1/16"×10000psi Integral flange for sour gas service | | In accordance with API Spec 6A 21 st edition | | | |
| End Connections: 4-1/16"×10000psi Integral flange for sour gas service | | In accordance with API Spec 17D 3 rd edition | | | |
| Hydrostatic Testing | | In accordance with API Spec 16C 3 rd edition | | | |
| product Marking | | In accordance with API Spec 16C 3 rd edition | | | |
| Inspection conclusion | | The inspected items meet standard requirements of API Spec 16C 3 rd edition | | | |
| Remarks | | | | | |
| Approver | Jiaolong Chen | Auditor | Huiling Dong | Inspector | Zhansheng Wang |



LUOHE LETONE HYDRAULICS TECHNOLOGY CO.,LTD

CERTIFICATE OF CONFORMANCE

No:LT230826016

Product Name: Choke And Kill Hose

Product Specification: 3"×10000psi×60ft (18.29m)

Serial Number: 7660143~7660144

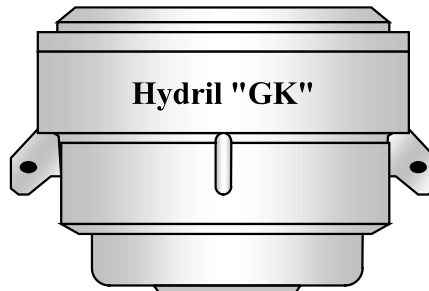
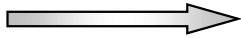
End Connections: 4-1/16"×10000psi Integral flange for sour gas service

The Choke And Kill Hose assembly was produced by LUOHE LETONE HYDRAULICS TECHNOLOGY CO.,LTD . in Aug 2023, and inspected by LUOHE LETONE HYDRAULICS TECHNOLOGY CO.,LTD. according to API Spec 16C 3rd edition on Aug 26, 2023. The overall condition is good. This is to certify that the Choke And Kill Hose complies with all current standards and specifications for API Spec 16C 3rd edition .

QC Manager: *Jiaolong Chen*

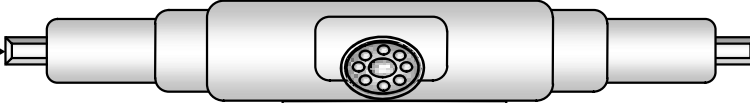
Date:Aug 26, 2023

Hydril "GK"
13 5/8" 5M

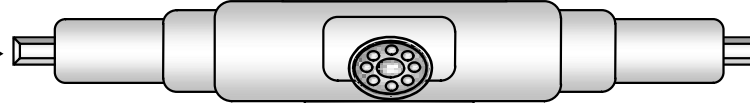


Hydril "GK"

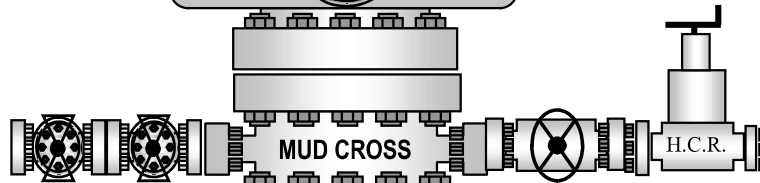
Cameron Type U
13 5/8" 5M



4 1/2" x 5 7/8" VBR

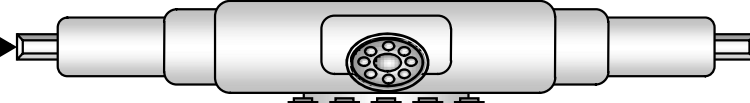


BLIND RAMS



MUD CROSS

H.C.R.



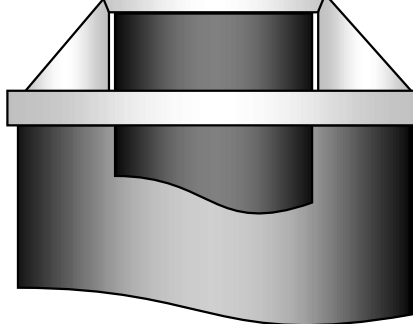
7" RAMS



13 5/8" 5M

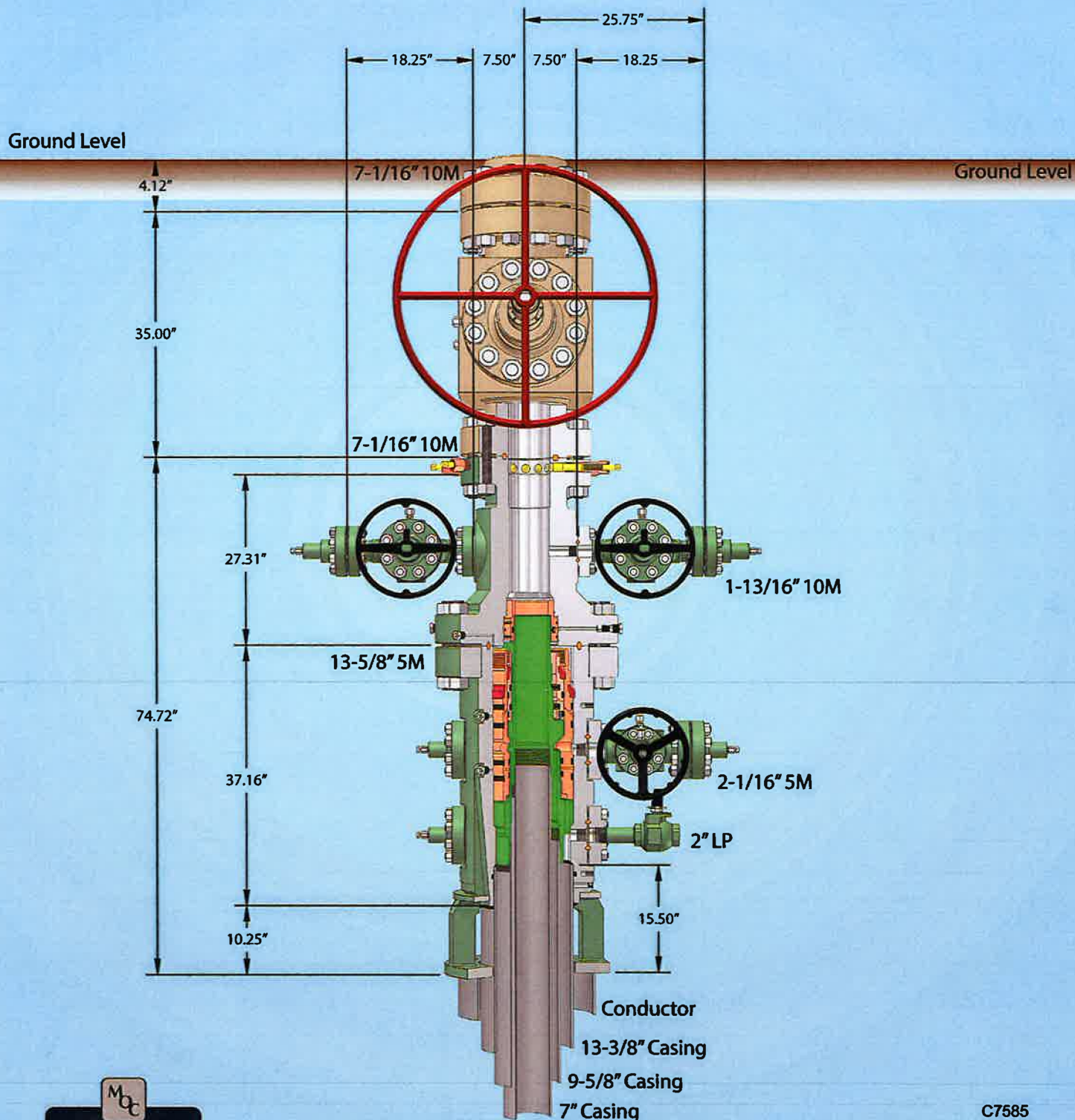
13 5/8" 5M

13 5/8" 5M





13-5/8" MN-DS Wellhead System



C7585
Rev. 02

NOTE: All dimensions on this drawing are estimated measurements and should be evaluated by engineering.

Cuffing Hanger 57" conductor cut-off



API LTC

| Coupling | Pipe Body |
|-------------|-----------------|
| Grade: P110 | Grade: P110 |
| Body: White | 1st Band: White |
| 1st Band: - | 2nd Band: - |
| 2nd Band: - | 3rd Band: - |
| 3rd Band: - | 4th Band: - |

| | | | | | |
|----------------------|-----------|-----------------|--------------|-------|--------|
| Outside Diameter | 7.000 in. | Wall Thickness | 0.362 in. | Grade | P110 |
| Min. Wall Thickness | 87.50 % | Pipe Body Drift | API Standard | Type | Casing |
| Connection OD Option | Regular | | | | |

Pipe Body Data

| Geometry | | Performance | |
|----------------|-----------|------------------------------|--------------|
| Nominal OD | 7.000 in. | Drift | 6.151 in. |
| Wall Thickness | 0.362 in. | Plain End Weight | 25.69 lb/ft |
| Nominal Weight | 26 lb/ft | OD Tolerance | API |
| Nominal ID | 6.276 in. | | |
| | | SMYS | 110,000 psi |
| | | Min UTS | 125,000 psi |
| | | Body Yield Strength | 830 x1000 lb |
| | | Min. Internal Yield Pressure | 9960 psi |
| | | Collapse Pressure | 6230 psi |
| | | Max. Allowed Bending | 72 °/100 ft |

Connection Data

| Geometry | | Performance | | Make-Up Torques | |
|----------------------|-----------|----------------------------|--------------|-----------------|------------|
| Thread per In | 8 | Joint Strength | 693 x1000 lb | Minimum Torque | 5200 ft-lb |
| Connection OD | 7.875 in. | Coupling Face Load | 799 x1000 lb | Optimum Torque | 6930 ft-lb |
| Hand Tight Stand Off | 3 in. | Internal Pressure Capacity | 9960 psi | Maximum Torque | 8660 ft-lb |

Notes

For products according to API Standards 5CT & 5B; Performance calculated considering API Technical Report 5C3 (Sections 9 & 10) equations.
For geometrical and steel grades combinations not considered in the API Standards 5CT and/or 5B; Performance calculations indirectly derived from API Technical Report 5C3 (Sections 9 & 10) equations.
Couplings OD are shown according to current API 5CT 10th Edition.
Tenaris has issued this document for general information only, and the information in this document, including, without limitation, any pictures, drawings or designs ("Information") is not intended to constitute professional or any other type of advice or recommendation and is provided on an "as is" basis. No warranty is given. Tenaris has not independently verified any information –if any- provided by the user in connection with, or for the purpose of, the Information contained hereunder. The use of the Information is at user's own risk and Tenaris does not assume any responsibility or liability of any kind for any loss, damage or injury resulting from, or in connection with any Information contained hereunder or any use thereof. The Information in this document is subject to change or modification without notice. Tenaris's products and services are subject to Tenaris's standard terms and conditions or otherwise to the terms resulting from the respective contracts of sale or services, as the case may be, between petitioner and Tenaris. For more complete information please contact a Tenaris's representative or visit our website at www.tenaris.com. ©Tenaris 2024. All rights reserved.



API LTC

| Coupling | Pipe Body |
|---------------------|------------------------|
| Grade: J55 (Casing) | Grade: J55 (Casing) |
| Body: Bright Green | 1st Band: Bright Green |
| 1st Band: White | 2nd Band: - |
| 2nd Band: - | 3rd Band: - |
| 3rd Band: - | 4th Band: - |

| | | | | | |
|----------------------|-----------|-----------------|--------------|-------|--------------|
| Outside Diameter | 9.625 in. | Wall Thickness | 0.352 in. | Grade | J55 (Casing) |
| Min. Wall Thickness | 87.50 % | Pipe Body Drift | API Standard | Type | Casing |
| Connection OD Option | Regular | | | | |

Pipe Body Data

| Geometry | | Performance | |
|----------------|-----------|------------------------------|--------------|
| Nominal OD | 9.625 in. | Drift | 8.765 in. |
| Wall Thickness | 0.352 in. | Plain End Weight | 34.89 lb/ft |
| Nominal Weight | 36 lb/ft | OD Tolerance | API |
| Nominal ID | 8.921 in. | | |
| | | SMYS | 55,000 psi |
| | | Min UTS | 75,000 psi |
| | | Body Yield Strength | 564 x1000 lb |
| | | Min. Internal Yield Pressure | 3520 psi |
| | | Collapse Pressure | 2020 psi |
| | | Max. Allowed Bending | 26 °/100 ft |

Connection Data

| Geometry | | Performance | | Make-Up Torques | |
|----------------------|------------|----------------------------|--------------|-----------------|------------|
| Thread per In | 8 | Joint Strength | 453 x1000 lb | Minimum Torque | 3400 ft-lb |
| Connection OD | 10.625 in. | Coupling Face Load | 433 x1000 lb | Optimum Torque | 4530 ft-lb |
| Hand Tight Stand Off | 3.500 in. | Internal Pressure Capacity | 3520 psi | Maximum Torque | 5660 ft-lb |

Notes

For products according to API Standards 5CT & 5B; Performance calculated considering API Technical Report 5C3 (Sections 9 & 10) equations.
For geometrical and steel grades combinations not considered in the API Standards 5CT and/or 5B; Performance calculations indirectly derived from API Technical Report 5C3 (Sections 9 & 10) equations.
Couplings OD are shown according to current API 5CT 10th Edition.
Tenaris has issued this document for general information only, and the information in this document, including, without limitation, any pictures, drawings or designs ("Information") is not intended to constitute professional or any other type of advice or recommendation and is provided on an "as is" basis. No warranty is given. Tenaris has not independently verified any information –if any- provided by the user in connection with, or for the purpose of, the Information contained hereunder. The use of the Information is at user's own risk and Tenaris does not assume any responsibility or liability of any kind for any loss, damage or injury resulting from, or in connection with any Information contained hereunder or any use thereof. The Information in this document is subject to change or modification without notice. Tenaris's products and services are subject to Tenaris's standard terms and conditions or otherwise to the terms resulting from the respective contracts of sale or services, as the case may be, between petitioner and Tenaris. For more complete information please contact a Tenaris's representative or visit our website at www.tenaris.com . ©Tenaris 2024. All rights reserved.



API LTC

| Coupling | Pipe Body |
|-------------|-----------------|
| Grade: P110 | Grade: P110 |
| Body: White | 1st Band: White |
| 1st Band: - | 2nd Band: - |
| 2nd Band: - | 3rd Band: - |
| 3rd Band: - | 4th Band: - |

| | | | | | |
|----------------------|-----------|-----------------|--------------|-------|--------|
| Outside Diameter | 4.500 in. | Wall Thickness | 0.290 in. | Grade | P110 |
| Min. Wall Thickness | 87.50 % | Pipe Body Drift | API Standard | Type | Casing |
| Connection OD Option | Regular | | | | |

Pipe Body Data

| Geometry | | Performance | |
|----------------|--------------|------------------------------|--------------|
| Nominal OD | 4.500 in. | Drift | 3.795 in. |
| Wall Thickness | 0.290 in. | Plain End Weight | 13.05 lb/ft |
| Nominal Weight | 13.500 lb/ft | OD Tolerance | API |
| Nominal ID | 3.920 in. | | |
| | | SMYS | 110,000 psi |
| | | Min UTS | 125,000 psi |
| | | Body Yield Strength | 422 x1000 lb |
| | | Min. Internal Yield Pressure | 12,410 psi |
| | | Collapse Pressure | 10,690 psi |
| | | Max. Allowed Bending | 112 °/100 ft |

Connection Data

| Geometry | | Performance | | Make-Up Torques | |
|----------------------|-----------|----------------------------|--------------|-----------------|------------|
| Thread per In | 8 | Joint Strength | 338 x1000 lb | Minimum Torque | 2750 ft-lb |
| Connection OD | 5.250 in. | Coupling Face Load | 473 x1000 lb | Optimum Torque | 3660 ft-lb |
| Hand Tight Stand Off | 3 in. | Internal Pressure Capacity | 12,410 psi | Maximum Torque | 4580 ft-lb |

Notes

For products according to API Standards 5CT & 5B; Performance calculated considering API Technical Report 5C3 (Sections 9 & 10) equations.
For geometrical and steel grades combinations not considered in the API Standards 5CT and/or 5B; Performance calculations indirectly derived from API Technical Report 5C3 (Sections 9 & 10) equations.
Couplings OD are shown according to current API 5CT 10th Edition.
Tenaris has issued this document for general information only, and the information in this document, including, without limitation, any pictures, drawings or designs ("Information") is not intended to constitute professional or any other type of advice or recommendation and is provided on an "as is" basis. No warranty is given. Tenaris has not independently verified any information –if any- provided by the user in connection with, or for the purpose of, the Information contained hereunder. The use of the Information is at user's own risk and Tenaris does not assume any responsibility or liability of any kind for any loss, damage or injury resulting from, or in connection with any Information contained hereunder or any use thereof. The Information in this document is subject to change or modification without notice. Tenaris's products and services are subject to Tenaris's standard terms and conditions or otherwise to the terms resulting from the respective contracts of sale or services, as the case may be, between petitioner and Tenaris. For more complete information please contact a Tenaris's representative or visit our website at www.tenaris.com . ©Tenaris 2024. All rights reserved.



API STC

| Coupling | Pipe Body |
|---------------------|------------------------|
| Grade: J55 (Casing) | Grade: J55 (Casing) |
| Body: Bright Green | 1st Band: Bright Green |
| 1st Band: White | 2nd Band: - |
| 2nd Band: - | 3rd Band: - |
| 3rd Band: - | 4th Band: - |

| | | | | | |
|----------------------|------------|-----------------|--------------|-------|--------------|
| Outside Diameter | 13.375 in. | Wall Thickness | 0.380 in. | Grade | J55 (Casing) |
| Min. Wall Thickness | 87.50 % | Pipe Body Drift | API Standard | Type | Casing |
| Connection OD Option | Regular | | | | |

Pipe Body Data

| Geometry | | Performance | |
|----------------|--------------|------------------------------|--------------|
| Nominal OD | 13.375 in. | Drift | 12.459 in. |
| Wall Thickness | 0.380 in. | Plain End Weight | 52.79 lb/ft |
| Nominal Weight | 54.500 lb/ft | OD Tolerance | API |
| Nominal ID | 12.615 in. | | |
| | | SMYS | 55,000 psi |
| | | Min UTS | 75,000 psi |
| | | Body Yield Strength | 853 x1000 lb |
| | | Min. Internal Yield Pressure | 2730 psi |
| | | Collapse Pressure | 1130 psi |
| | | Max. Allowed Bending | 19 °/100 ft |

Connection Data

| Geometry | | Performance | | Make-Up Torques | |
|----------------------|------------|----------------------------|--------------|-----------------|------------|
| Thread per In | 8 | Joint Strength | 514 x1000 lb | Minimum Torque | 3860 ft-lb |
| Connection OD | 14.375 in. | Coupling Face Load | 519 x1000 lb | Optimum Torque | 5140 ft-lb |
| Hand Tight Stand Off | 3.500 in. | Internal Pressure Capacity | 2730 psi | Maximum Torque | 6430 ft-lb |

Notes

For products according to API Standards 5CT & 5B; Performance calculated considering API Technical Report 5C3 (Sections 9 & 10) equations.
For geometrical and steel grades combinations not considered in the API Standards 5CT and/or 5B; Performance calculations indirectly derived from API Technical Report 5C3 (Sections 9 & 10) equations.
Couplings OD are shown according to current API 5CT 10th Edition.
Tenaris has issued this document for general information only, and the information in this document, including, without limitation, any pictures, drawings or designs ("Information") is not intended to constitute professional or any other type of advice or recommendation and is provided on an "as is" basis. No warranty is given. Tenaris has not independently verified any information –if any- provided by the user in connection with, or for the purpose of, the Information contained hereunder. The use of the Information is at user's own risk and Tenaris does not assume any responsibility or liability of any kind for any loss, damage or injury resulting from, or in connection with any Information contained hereunder or any use thereof. The Information in this document is subject to change or modification without notice. Tenaris's products and services are subject to Tenaris's standard terms and conditions or otherwise to the terms resulting from the respective contracts of sale or services, as the case may be, between petitioner and Tenaris. For more complete information please contact a Tenaris's representative or visit our website at www.tenaris.com. ©Tenaris 2024. All rights reserved.



API STC

| Coupling | Pipe Body |
|---------------------|------------------------|
| Grade: J55 (Casing) | Grade: J55 (Casing) |
| Body: Bright Green | 1st Band: Bright Green |
| 1st Band: White | 2nd Band: - |
| 2nd Band: - | 3rd Band: - |
| 3rd Band: - | 4th Band: - |

| | | | | | |
|----------------------|------------|-----------------|--------------|-------|--------------|
| Outside Diameter | 13.375 in. | Wall Thickness | 0.380 in. | Grade | J55 (Casing) |
| Min. Wall Thickness | 87.50 % | Pipe Body Drift | API Standard | Type | Casing |
| Connection OD Option | Regular | | | | |

Pipe Body Data

| Geometry | | Performance | |
|----------------|--------------|------------------------------|--------------|
| Nominal OD | 13.375 in. | Drift | 12.459 in. |
| Wall Thickness | 0.380 in. | Plain End Weight | 52.79 lb/ft |
| Nominal Weight | 54.500 lb/ft | OD Tolerance | API |
| Nominal ID | 12.615 in. | | |
| | | SMYS | 55,000 psi |
| | | Min UTS | 75,000 psi |
| | | Body Yield Strength | 853 x1000 lb |
| | | Min. Internal Yield Pressure | 2730 psi |
| | | Collapse Pressure | 1130 psi |
| | | Max. Allowed Bending | 19 °/100 ft |

Connection Data

| Geometry | | Performance | | Make-Up Torques | |
|----------------------|------------|----------------------------|--------------|-----------------|------------|
| Thread per In | 8 | Joint Strength | 514 x1000 lb | Minimum Torque | 3860 ft-lb |
| Connection OD | 14.375 in. | Coupling Face Load | 519 x1000 lb | Optimum Torque | 5140 ft-lb |
| Hand Tight Stand Off | 3.500 in. | Internal Pressure Capacity | 2730 psi | Maximum Torque | 6430 ft-lb |

Notes

For products according to API Standards 5CT & 5B; Performance calculated considering API Technical Report 5C3 (Sections 9 & 10) equations.
For geometrical and steel grades combinations not considered in the API Standards 5CT and/or 5B; Performance calculations indirectly derived from API Technical Report 5C3 (Sections 9 & 10) equations.
Couplings OD are shown according to current API 5CT 10th Edition.
Tenaris has issued this document for general information only, and the information in this document, including, without limitation, any pictures, drawings or designs ("Information") is not intended to constitute professional or any other type of advice or recommendation and is provided on an "as is" basis. No warranty is given. Tenaris has not independently verified any information –if any- provided by the user in connection with, or for the purpose of, the Information contained hereunder. The use of the Information is at user's own risk and Tenaris does not assume any responsibility or liability of any kind for any loss, damage or injury resulting from, or in connection with any Information contained hereunder or any use thereof. The Information in this document is subject to change or modification without notice. Tenaris's products and services are subject to Tenaris's standard terms and conditions or otherwise to the terms resulting from the respective contracts of sale or services, as the case may be, between petitioner and Tenaris. For more complete information please contact a Tenaris's representative or visit our website at www.tenaris.com. ©Tenaris 2024. All rights reserved.

Mewbourne Oil Company, Macho Man 18/19 Fed Com 528H
Sec 18, T18S, R34E
SHL: 2330' FNL 2540' FEL (Sec 18)
BHL: 100' FSL 660' FEL (Sec 19)

Well Location GL: 4079'

| Point | Calls | Leases | Aliquot | Section | Township | Range | County | Lat | Long | TVD | MD |
|-------|-------------------------------------|------------|---------|---------|----------|-------|--------|------------|-------------|---------|---------|
| SHL | SHL: 2330' FNL & 2540' FEL (Sec 18) | State | SWNE | 18 | 18S | 34E | Lea | 32.7485803 | 103.5993737 | 0' | 0' |
| KOP | KOP: 2167' FNL & 660' FEL (Sec 18) | State | SENE | 18 | 18S | 34E | Lea | 32.7490366 | 103.5933275 | 9,064' | 9,321' |
| FTP | FTP: 2540' FSL & 660' FEL (Sec 18) | State | SENE | 18 | 18S | 34E | Lea | 32.7474620 | 103.5933207 | 9,637' | 10,221' |
| PPP2 | PPP2: 0' FNL & 660' FEL (Sec 19) | NMNM104699 | NENE | 19 | 18S | 34E | Lea | 32.7404836 | 103.5932957 | 9,769' | 12,763' |
| PPP3 | PPP3: 1322' FNL & 660' FEL (Sec 19) | NMNM116164 | SENE | 19 | 18S | 34E | Lea | 32.7368521 | 103.5932826 | 9,837' | 14,086' |
| PPP4 | PPP4: 2637' FSL & 659' FEL (Sec 19) | NMNM116167 | NESE | 19 | 18S | 34E | Lea | 32.7332205 | 103.5932696 | 9,906' | 15,409' |
| BHL | BHL: 100' FSL & 660' FEL (Sec 19) | NMNM116167 | SESE | 19 | 18S | 34E | Lea | 32.7262485 | 103.5932446 | 10,037' | 17,949' |

GEOLOGY

| Formation | Est. Top (TVD) | Lithology | Mineral Resources | Formation | Est. Top (TVD) | Lithology | Mineral Resources |
|----------------|----------------|--------------------|-------------------|---------------------|----------------|--------------------|-------------------|
| Rustler | 1805' | Dolomite/Anhydrite | Usable Water | Yeso | | | |
| Castile | | | | Delaware (Lamar) | 5646' | Limestone/Dolomite | Oil/Natural Gas |
| Salt Top | 2051' | Salt | None | Bell Canyon | | | |
| Marker Bed 126 | 3092' | Salt | None | Cherry Canyon | | | |
| Salt Base | 3274' | Salt | Oil/Natural Gas | Manzanita Marker | | | |
| Yates | 3714' | Sandstone | Oil/Natural Gas | Basal Brushy Canyon | | | |
| Seven Rivers | 4443' | Dolomite | Oil/Natural Gas | Bone Spring | 7057' | Limestone | Oil/Natural Gas |
| Queen | | | | 1st Bone Spring | 8503' | Sandstone | Oil/Natural Gas |
| Capitan | 4734' | Limestone/Dolomite | None | 2nd Bone Spring | 9180' | Sandstone | Oil/Natural Gas |
| Grayburg | 5014' | | Oil/Natural Gas | 3rd Bone Spring | | | |
| San Andres | | | | Wolfcamp | | | |

| Casing Program Design A | | | | | | BLM Minimum Safety Factors | 1.125 | 1.0 | 1.6 Dry 1.8 Wet | 1.6 Dry 1.8 Wet |
|-------------------------|-----------|--------|---------|--------|---------|----------------------------|-------------|----------|--------------------|--------------------|
| String | Hole Size | Top MD | Top TVD | Bot MD | Bot TVD | Csg. Size | SF Collapse | SF Burst | SF Jt Tension | SF Body Tension |
| Surface | 17.5" | 0' | 0' | 1880' | 1880' | 13.375" 54.5# J55 STC | 1.34 | 3.25 | 5.02 | 8.33 |
| Int | 12.25" | 0' | 0' | 3280' | 3280' | 9.625" 36# J55 LTC | 1.13 | 1.97 | 3.81 | 4.74 |
| Int | 12.25" | 3280' | 3280' | 3300' | 3300' | 9.625" 40# J55 LTC | 1.43 | 2.19 | 650.00 | 787.50 |
| Production | 8.75" | 0' | 0' | 9321' | 9064' | 7" 26# P110 LTC | 1.39 | 2.22 | 2.86 | 3.42 |
| Liner | 6.125" | 9121' | 9069' | 17949' | 10037' | 4.5" 13.5# P110 LTC | 1.78 | 2.07 | 2.84 | 3.54 |

All casing strings will be tested in accordance with 43 CFR Part 3172. Must have table for contingency casing.

| | Y or N |
|--|--------|
| Is casing new? If used, attach certification as required in Onshore Order #1 | Y |
| Is casing API approved? If no, attach casing specification sheet. | Y |
| Is premium or uncommon casing planned? If yes attach casing specification sheet. | N |
| Does the above casing design meet or exceed BLM's minimum standards? If not provide justification (loading assumptions, casing design criteria). | Y |
| Will the pipe be kept at a minimum 1/3 fluid filled to avoid approaching the collapse pressure rating of the casing? | Y |
| Is well located within Capitan Reef? | N |
| If yes, does production casing cement tie back a minimum of 50' above the Reef? | |
| Is well within the designated 4 string boundary. | N |
| Is well located in SOPA but not in R-111-Q? | N |
| If yes, are the first 2 strings cemented to surface and 3 rd string cement tied back 500' into previous casing? | |
| Is well located in R-111-Q and SOPA? | N |
| If yes, are the first three strings cemented to surface? | |
| Is 2 nd string set 100' to 600' below the base of salt? | |
| Is an open annulus used to satisfy R-111-Q? If yes, see cement design. | |
| Is an engineered weak point used to satisfy R-111-Q? | |
| If yes, at what depth is the weak point planned? | |
| Is well located in high Cave/Karst? | N |
| If yes, are there two strings cemented to surface? | |
| (For 2 string wells) If yes, is there a contingency casing if lost circulation occurs? | |
| Is well located in critical Cave/Karst? | N |
| If yes, are there three strings cemented to surface? | |

Mewbourne Oil Company, Macho Man 18/19 Fed Com 528H
Sec 18, T18S, R34E
SHL: 2330' FNL 2540' FEL (Sec 18)
BHL: 100' FSL 660' FEL (Sec 19)

Design A - Cement Program

| Csg. Size | | # Sacks | Wt., lb/gal | Yield, ft ³ /sack | TOC/BOC | Volume, ft ³ | % Excess | Slurry Description |
|-----------|------|---------|-------------|------------------------------|----------------|-------------------------|----------|---|
| 13.375 in | LEAD | 1110 | 12.5 | 2.12 | 0' - 1688' | 2360 | 100% | Class C: Salt, Gel, Extender, LCM |
| | TAIL | 200 | 14.8 | 1.34 | 1688' - 1880' | 268 | | Class C: Retarder |
| 9.625 in | LEAD | 470 | 12.5 | 2.12 | 0' - 2603' | 1000 | 25% | Class C: Salt, Gel, Extender, LCM |
| | TAIL | 200 | 14.8 | 1.34 | 2603' - 3300' | 268 | | Class C: Retarder |
| 7 in | LEAD | 330 | 12.5 | 2.12 | 3100' - 6816' | 700 | 25% | Class C: Salt, Gel, Extender, LCM, Defoamer |
| | TAIL | 400 | 15.6 | 1.18 | 6816' - 9321' | 472 | | Class H: Retarder, Fluid Loss, Defoamer |
| 4.5 in | LEAD | 570 | 13.5 | 1.85 | 9121' - 17949' | 1060 | 25% | Class H: Salt, Gel, Fluid Loss, Retarder, Dispersant, Defoamer, Anti-settling Agent |

Pressure Control Equipment

| BOP installed and tested before drilling hole, in: | Size, in | System Rated WP | Type | | Tested to: | Rating Depth |
|--|----------|-----------------|------------|---|-------------|--------------|
| 12.25 | 13.375 | 5M | Annular | X | 2500#/3500# | 17,949' |
| | | 5M | Blind Ram | X | 5000# | |
| | | | Pipe Ram | X | | |
| | | | Double Ram | | | |
| | | | Other* | | | |

*Specify if additional ram is utilized.

Equipment: Annular, Pipe Rams, Blind Rams, Other accessories to the BOP equipment will include a Kelly cock and floor safety valve (inside BOP) and choke lines and choke manifold. See attached schematics.

Variance Request: A variance is requested for the use of a flexible choke line from the BOP to the choke manifold. See attached for hydrostatic test chart. Anchors are not required by manufacturer. Variance is requested to use a multi bowl wellhead. Variance is requested to perform break testing according to attached procedure. If a breaktesting variance is approved & incorporated, API Standard 53 will be incorporated and testing annular BOP to 70% of RWP or 100% of MASP, whichever is greater, will be performed.

Testing Procedure: BOP/BOPE will be tested by an independent service company to 250 psi low and the high pressure indicated above per 43 CFR Part 3172 requirements. The System may be upgraded to a higher pressure but still tested to the working pressure listed in the table above. If the system is upgraded all the components installed will be functional and tested. Pipe rams will be operationally checked each 24 hour period. Blind rams will be operationally checked on each trip out of the hole. These checks will be noted on the daily tour sheets.

| | |
|---|--|
| Y | Formation integrity test will be performed per 43 CFR Part 3172. On Exploratory wells or on that portion of any well approved for a 5M BOPE system or greater, a pressure integrity test of each casing shoe shall be performed. Will be tested in accordance with 43 CFR Part 3172. |
| N | Mewbourne Oil Company request a variance to use a 5000 psi annular BOP with a 10,000 psi BOP stack. |

Mud Program

| Depth (MD) | Mud Wt., lb/gal | Mud Type |
|----------------|-----------------|-------------|
| | 8.4 - 8.6 | Fresh Water |
| 0' - 1880' | 8.4 - 8.6 | Fresh Water |
| 1880' - 3300' | 9.5 - 10.5 | Brine |
| 3300' - 9321' | 8.6 - 9.5 | Cut-Brine |
| 9321' - 17949' | 10.0 - 11.5 | OBM |

Sufficient mud materials to maintain mud properties and meet minimum lost circulation and weight increase requirements will be kept on location at all times.

| | |
|---|-----------------------------|
| What will be used to monitor the loss or gain of fluid? | Pason/PVT/Visual Monitoring |
|---|-----------------------------|

Mewbourne Oil Company, Macho Man 18/19 Fed Com 528H
Sec 18, T18S, R34E
SHL: 2330' FNL 2540' FEL (Sec 18)
BHL: 100' FSL 660' FEL (Sec 19)

Logging and Testing Procedures

| Logging, Coring and Testing. | |
|------------------------------|--|
| Y | Will run GR/CNL from KOP (9321') to surface (horizontal well – vertical portion of hole). Stated logs run will be in the Completion Report and submitted to the BLM. |
| N | No logs are planned based on well control or offset log information. Offset Well: |
| N | Coring? If yes, explain: |

Open & Cased Hole Logs Run In the Well

| | | |
|--|--|--|
| <input type="checkbox"/> Caliper | <input type="checkbox"/> Cement Bond Log | <input type="checkbox"/> CNL/FDC |
| <input type="checkbox"/> Compensated Densilog | <input checked="" type="checkbox"/> Compensated Neutron Log | <input type="checkbox"/> Computer Generated Log |
| <input type="checkbox"/> Dip Meter Log | <input checked="" type="checkbox"/> Directional Survey | <input type="checkbox"/> Dual Induction/Microresistivity |
| <input type="checkbox"/> Dual Lateral Log/Microspherically Focused | <input type="checkbox"/> Electric Log | <input type="checkbox"/> Formation Density Compensated Log |
| <input checked="" type="checkbox"/> Gamma Ray Log | <input checked="" type="checkbox"/> Measurement While Drilling | <input type="checkbox"/> Mud Log/Geological Lithology Log |
| <input type="checkbox"/> Other | <input type="checkbox"/> Porosity-Resistivity Log | <input type="checkbox"/> Sidewall Neutron Log |
| <input type="checkbox"/> Sonic Log | <input type="checkbox"/> Spontaneous Potential Log | <input type="checkbox"/> Temperature Log |

Drilling Conditions

| Condition | Specify what type and where? |
|--|------------------------------|
| BH Pressure at deepest TVD | 6002 psi |
| BH Temperature | 140 |
| Abnormal Temp, Pressure, or Geologic Hazards | No |

Mitigation measure for abnormal conditions. Describe. Lost circulation material/sweeps/mud scavengers in surface hole. Weighted mud for possible over-pressure in Wolfcamp formation.

Hydrogen Sulfide (H2S) monitors will be installed prior to drilling out the surface shoe. If H2S is detected in concentrations greater than 100 ppm, the operator will comply with the provisions of Onshore Oil and Gas Order #6. If Hydrogen Sulfide is encountered, measured values and formations will be provided to the BLM.

| | |
|---|-------------------|
| | H2S is present |
| X | H2S Plan attached |

Mewbourne Oil Company, Macho Man 18/19 Fed Com 528H
Sec 18, T18S, R34E
SHL: 2330' FNL 2540' FEL (Sec 18)
BHL: 100' FSL 660' FEL (Sec 19)

Other facets of operation

Mewbourne Oil Company also requests approval to implement Design B as described below. BLM will be notified of elected design.

Offline Cementing Variance: Variance is requested to perform offline cementing according to the attached procedure. **R-111Q:** Mewbourne proposes performing Open Hole Cementing per R-111Q Guidelines if well is in Potash.

| Casing Program Design B | | | | | | BLM Minimum Safety Factors | 1.125 | 1.0 | 1.6 Dry 1.8 Wet | 1.6 Dry 1.8 Wet |
|-------------------------|-----------|--------|---------|--------|---------|----------------------------|-------------|----------|--------------------|--------------------|
| String | Hole Size | Top MD | Top TVD | Bot MD | Bot TVD | Csg. Size | SF Collapse | SF Burst | SF Jt | SF Body |
| Surface | 17.5" | 0' | 0' | 1880' | 1880' | 13.375" 54.5# J55 STC | 1.34 | 3.25 | 5.02 | 8.33 |
| Int | 12.25" | 0' | 0' | 3280' | 3280' | 9.625" 36# J55 LTC | 1.13 | 1.97 | 3.81 | 4.74 |
| Int | 12.25" | 3280' | 3280' | 3300' | 3300' | 9.625" 40# J55 LTC | 1.43 | 2.19 | 650.00 | 787.50 |
| Production | 8.75" | 0' | 0' | 10221' | 9637' | 7" 26# P110 LTC | 1.31 | 2.09 | 2.61 | 3.12 |
| Liner | 6.125" | 9321' | 9064' | 17949' | 10037' | 4.5" 13.5# P110 LTC | 1.78 | 2.07 | 2.90 | 3.62 |

All casing strings will be tested in accordance with 43 CFR Part 3172. Must have table for contingency casing.

| | Y or N |
|--|--------|
| Is casing new? If used, attach certification as required in Onshore Order #1 | Y |
| Is casing API approved? If no, attach casing specification sheet. | Y |
| Is premium or uncommon casing planned? If yes attach casing specification sheet. | N |
| Does the above casing design meet or exceed BLM's minimum standards? If not provide justification (loading assumptions, casing design criteria). | Y |
| Will the pipe be kept at a minimum 1/3 fluid filled to avoid approaching the collapse pressure rating of the casing? | Y |
| Is well located within Capitan Reef? | N |
| If yes, does production casing cement tie back a minimum of 50' above the Reef? | |
| Is well within the designated 4 string boundary. | N |
| Is well located in SOPA but not in R-111-Q? | N |
| If yes, are the first 2 strings cemented to surface and 3 rd string cement tied back 500' into previous casing? | |
| Is well located in R-111-Q and SOPA? | N |
| If yes, are the first three strings cemented to surface? | |
| Is 2 nd string set 100' to 600' below the base of salt? | |
| Is an open annulus used to satisfy R-111-Q? If yes, see cement design. | |
| Is an engineered weak point used to satisfy R-111-Q? | |
| If yes, at what depth is the weak point planned? | |
| Is well located in high Cave/Karst? | N |
| If yes, are there two strings cemented to surface? | |
| (For 2 string wells) If yes, is there a contingency casing if lost circulation occurs? | |
| Is well located in critical Cave/Karst? | N |
| If yes, are there three strings cemented to surface? | |

Design B - Cement Program

| Csg. Size | | # Sacks | Wt., lb/gal | Yield, ft ³ /sack | TOC/BOC | Volume, ft ³ | % Excess | Slurry Description |
|-----------|------|---------|-------------|------------------------------|----------------|-------------------------|----------|---|
| 13.375 in | LEAD | 1110 | 12.5 | 2.12 | 0' - 1688' | 2360 | 100% | Class C: Salt, Gel, Extender, LCM |
| | TAIL | 200 | 14.8 | 1.34 | 1688' - 1880' | 268 | | Class C: Retarder |
| 9.625 in | LEAD | 470 | 12.5 | 2.12 | 0' - 2603' | 1000 | 25% | Class C: Salt, Gel, Extender, LCM |
| | TAIL | 200 | 14.8 | 1.34 | 2603' - 3300' | 268 | | Class C: Retarder |
| 7 in | LEAD | 410 | 12.5 | 2.12 | 3100' - 7716' | 870 | 25% | Class C: Salt, Gel, Extender, LCM, Defoamer |
| | TAIL | 400 | 15.6 | 1.18 | 7716' - 10221' | 472 | | Class H: Retarder, Fluid Loss, Defoamer |
| 4.5 in | LEAD | 550 | 13.5 | 1.85 | 9321' - 17949' | 1020 | 25% | Class H: Salt, Gel, Fluid Loss, Retarder, Dispersant, Defoamer, Anti-settling Agent |

Mewbourne Oil Company

Lea County, New Mexico NAD 83

Macho Man 18/19 Fed Com #528H

Sec 18, T18S, R34E

SHL: 2330' FNL & 2540' FEL (Sec 18)

BHL: 100' FSL & 660' FEL (Sec 19)

Plan: Design #1

Standard Planning Report

22 October, 2024

Planning Report

| | | | |
|-----------|-----------------------------------|------------------------------|--|
| Database: | Hobbs | Local Co-ordinate Reference: | Site Macho Man 18/19 Fed Com #528H |
| Company: | Mewbourne Oil Company | TVD Reference: | WELL @ 4107.0usft (Original Well Elev) |
| Project: | Lea County, New Mexico NAD 83 | MD Reference: | WELL @ 4107.0usft (Original Well Elev) |
| Site: | Macho Man 18/19 Fed Com #528H | North Reference: | Grid |
| Well: | Sec 18, T18S, R34E | Survey Calculation Method: | Minimum Curvature |
| Wellbore: | BHL: 100' FSL & 660' FEL (Sec 19) | | |
| Design: | Design #1 | | |

| | | | |
|-------------|-------------------------------|---------------|----------------|
| Project | Lea County, New Mexico NAD 83 | | |
| Map System: | US State Plane 1983 | System Datum: | Mean Sea Level |
| Geo Datum: | North American Datum 1983 | | |
| Map Zone: | New Mexico Eastern Zone | | |

| | | | | | |
|-----------------------|----------|-------------------------------|-----------------|------------|--------------|
| Site | | Macho Man 18/19 Fed Com #528H | | | |
| Site Position: | | Northing: | 636,847.20 usft | Latitude: | 32.7485804 |
| From: | Map | Easting: | 766,990.90 usft | Longitude: | -103.5993737 |
| Position Uncertainty: | 0.0 usft | Slot Radius: | 13-3/16 " | | |

| Well | Sec 18, T18S, R34E | | | | | |
|----------------------|--------------------|----------|---------------------|-----------------|---------------|--------------|
| Well Position | +N/-S | 0.0 usft | Northing: | 636,847.20 usft | Latitude: | 32.7485804 |
| | +E/-W | 0.0 usft | Easting: | 766,990.90 usft | Longitude: | -103.5993737 |
| Position Uncertainty | | 0.0 usft | Wellhead Elevation: | 4,107.0 usft | Ground Level: | 4,079.0 usft |
| Grid Convergence: | | 0.40 ° | | | | |

| | | | | | |
|-----------|-----------------------------------|-------------|-----------------|---------------|---------------------|
| Wellbore | BHL: 100' FSL & 660' FEL (Sec 19) | | | | |
| Magnetics | Model Name | Sample Date | Declination (°) | Dip Angle (°) | Field Strength (nT) |
| | IGRF2010 | 12/31/2014 | 7.20 | 60.58 | 48,568.72328226 |

| | | | | | |
|-------------------|-------------------------|--------------|---------------|---------------|--|
| Design | Design #1 | | | | |
| Audit Notes: | | | | | |
| Version: | Phase: | PROTOTYPE | Tie On Depth: | 0.0 | |
| Vertical Section: | Depth From (TVD) (usft) | +N/-S (usft) | +E/-W (usft) | Direction (°) | |
| | 0.0 | 0.0 | 0.0 | 166.54 | |

| | | | | | |
|--------------------------|-----------------|-------------------|----------------------------------|---------|--|
| Plan Survey Tool Program | Date | 10/22/2024 | | | |
| Depth From (usft) | Depth To (usft) | Survey (Wellbore) | Tool Name | Remarks | |
| 1 | 0.0 | 17,949.8 | Design #1 (BHL: 100' FSL & 660') | | |

| | | | | | | | | | | |
|-----------------------|-----------------|-------------|-----------------------|--------------|--------------|-------------------------|------------------------|-----------------------|---------|-----------------------|
| Plan Sections | | | | | | | | | | |
| Measured Depth (usft) | Inclination (°) | Azimuth (°) | Vertical Depth (usft) | +N/-S (usft) | +E/-W (usft) | Dogleg Rate (°/100usft) | Build Rate (°/100usft) | Turn Rate (°/100usft) | TFO (°) | Target |
| 0.0 | 0.00 | 0.00 | 0.0 | 0.0 | 0.0 | 0.00 | 0.00 | 0.00 | 0.00 | |
| 1,880.0 | 0.00 | 0.00 | 1,880.0 | 0.0 | 0.0 | 0.00 | 0.00 | 0.00 | 0.00 | |
| 2,697.6 | 16.35 | 84.50 | 2,686.6 | 11.1 | 115.4 | 2.00 | 2.00 | 0.00 | 84.50 | |
| 8,503.3 | 16.35 | 84.50 | 8,257.4 | 167.8 | 1,742.4 | 0.00 | 0.00 | 0.00 | 0.00 | |
| 9,321.0 | 0.00 | 0.00 | 9,064.0 | 178.9 | 1,857.8 | 2.00 | -2.00 | 0.00 | 180.00 | KOP: 2167' FNL & 660' |
| 10,192.6 | 87.04 | 179.42 | 9,637.0 | -365.2 | 1,863.3 | 9.99 | 9.99 | 0.00 | 179.42 | |
| 17,949.8 | 87.04 | 179.42 | 10,037.0 | -8,111.7 | 1,941.2 | 0.00 | 0.00 | 0.00 | 0.00 | BHL: 100' FSL & 660' |

Planning Report

| | | | |
|------------------|-----------------------------------|-------------------------------------|--|
| Database: | Hobbs | Local Co-ordinate Reference: | Site Macho Man 18/19 Fed Com #528H |
| Company: | Mewbourne Oil Company | TVD Reference: | WELL @ 4107.0usft (Original Well Elev) |
| Project: | Lea County, New Mexico NAD 83 | MD Reference: | WELL @ 4107.0usft (Original Well Elev) |
| Site: | Macho Man 18/19 Fed Com #528H | North Reference: | Grid |
| Well: | Sec 18, T18S, R34E | Survey Calculation Method: | Minimum Curvature |
| Wellbore: | BHL: 100' FSL & 660' FEL (Sec 19) | | |
| Design: | Design #1 | | |

| Planned Survey | | | | | | | | | |
|-------------------------------------|-----------------|-------------|-----------------------|-------------|-------------|-------------------------|-------------------------|------------------------|-----------------------|
| Measured Depth (usft) | Inclination (°) | Azimuth (°) | Vertical Depth (usft) | +N-S (usft) | +E-W (usft) | Vertical Section (usft) | Dogleg Rate (°/100usft) | Build Rate (°/100usft) | Turn Rate (°/100usft) |
| 0.0 | 0.00 | 0.00 | 0.0 | 0.0 | 0.0 | 0.0 | 0.00 | 0.00 | 0.00 |
| SHL: 2330' FNL & 2540' FEL (Sec 18) | | | | | | | | | |
| 50.0 | 0.00 | 0.00 | 50.0 | 0.0 | 0.0 | 0.0 | 0.00 | 0.00 | 0.00 |
| 100.0 | 0.00 | 0.00 | 100.0 | 0.0 | 0.0 | 0.0 | 0.00 | 0.00 | 0.00 |
| 150.0 | 0.00 | 0.00 | 150.0 | 0.0 | 0.0 | 0.0 | 0.00 | 0.00 | 0.00 |
| 200.0 | 0.00 | 0.00 | 200.0 | 0.0 | 0.0 | 0.0 | 0.00 | 0.00 | 0.00 |
| 250.0 | 0.00 | 0.00 | 250.0 | 0.0 | 0.0 | 0.0 | 0.00 | 0.00 | 0.00 |
| 300.0 | 0.00 | 0.00 | 300.0 | 0.0 | 0.0 | 0.0 | 0.00 | 0.00 | 0.00 |
| 350.0 | 0.00 | 0.00 | 350.0 | 0.0 | 0.0 | 0.0 | 0.00 | 0.00 | 0.00 |
| 400.0 | 0.00 | 0.00 | 400.0 | 0.0 | 0.0 | 0.0 | 0.00 | 0.00 | 0.00 |
| 450.0 | 0.00 | 0.00 | 450.0 | 0.0 | 0.0 | 0.0 | 0.00 | 0.00 | 0.00 |
| 500.0 | 0.00 | 0.00 | 500.0 | 0.0 | 0.0 | 0.0 | 0.00 | 0.00 | 0.00 |
| 550.0 | 0.00 | 0.00 | 550.0 | 0.0 | 0.0 | 0.0 | 0.00 | 0.00 | 0.00 |
| 600.0 | 0.00 | 0.00 | 600.0 | 0.0 | 0.0 | 0.0 | 0.00 | 0.00 | 0.00 |
| 650.0 | 0.00 | 0.00 | 650.0 | 0.0 | 0.0 | 0.0 | 0.00 | 0.00 | 0.00 |
| 700.0 | 0.00 | 0.00 | 700.0 | 0.0 | 0.0 | 0.0 | 0.00 | 0.00 | 0.00 |
| 750.0 | 0.00 | 0.00 | 750.0 | 0.0 | 0.0 | 0.0 | 0.00 | 0.00 | 0.00 |
| 800.0 | 0.00 | 0.00 | 800.0 | 0.0 | 0.0 | 0.0 | 0.00 | 0.00 | 0.00 |
| 850.0 | 0.00 | 0.00 | 850.0 | 0.0 | 0.0 | 0.0 | 0.00 | 0.00 | 0.00 |
| 900.0 | 0.00 | 0.00 | 900.0 | 0.0 | 0.0 | 0.0 | 0.00 | 0.00 | 0.00 |
| 950.0 | 0.00 | 0.00 | 950.0 | 0.0 | 0.0 | 0.0 | 0.00 | 0.00 | 0.00 |
| 1,000.0 | 0.00 | 0.00 | 1,000.0 | 0.0 | 0.0 | 0.0 | 0.00 | 0.00 | 0.00 |
| 1,050.0 | 0.00 | 0.00 | 1,050.0 | 0.0 | 0.0 | 0.0 | 0.00 | 0.00 | 0.00 |
| 1,100.0 | 0.00 | 0.00 | 1,100.0 | 0.0 | 0.0 | 0.0 | 0.00 | 0.00 | 0.00 |
| 1,150.0 | 0.00 | 0.00 | 1,150.0 | 0.0 | 0.0 | 0.0 | 0.00 | 0.00 | 0.00 |
| 1,200.0 | 0.00 | 0.00 | 1,200.0 | 0.0 | 0.0 | 0.0 | 0.00 | 0.00 | 0.00 |
| 1,250.0 | 0.00 | 0.00 | 1,250.0 | 0.0 | 0.0 | 0.0 | 0.00 | 0.00 | 0.00 |
| 1,300.0 | 0.00 | 0.00 | 1,300.0 | 0.0 | 0.0 | 0.0 | 0.00 | 0.00 | 0.00 |
| 1,350.0 | 0.00 | 0.00 | 1,350.0 | 0.0 | 0.0 | 0.0 | 0.00 | 0.00 | 0.00 |
| 1,400.0 | 0.00 | 0.00 | 1,400.0 | 0.0 | 0.0 | 0.0 | 0.00 | 0.00 | 0.00 |
| 1,450.0 | 0.00 | 0.00 | 1,450.0 | 0.0 | 0.0 | 0.0 | 0.00 | 0.00 | 0.00 |
| 1,500.0 | 0.00 | 0.00 | 1,500.0 | 0.0 | 0.0 | 0.0 | 0.00 | 0.00 | 0.00 |
| 1,550.0 | 0.00 | 0.00 | 1,550.0 | 0.0 | 0.0 | 0.0 | 0.00 | 0.00 | 0.00 |
| 1,600.0 | 0.00 | 0.00 | 1,600.0 | 0.0 | 0.0 | 0.0 | 0.00 | 0.00 | 0.00 |
| 1,650.0 | 0.00 | 0.00 | 1,650.0 | 0.0 | 0.0 | 0.0 | 0.00 | 0.00 | 0.00 |
| 1,700.0 | 0.00 | 0.00 | 1,700.0 | 0.0 | 0.0 | 0.0 | 0.00 | 0.00 | 0.00 |
| 1,750.0 | 0.00 | 0.00 | 1,750.0 | 0.0 | 0.0 | 0.0 | 0.00 | 0.00 | 0.00 |
| 1,800.0 | 0.00 | 0.00 | 1,800.0 | 0.0 | 0.0 | 0.0 | 0.00 | 0.00 | 0.00 |
| 1,850.0 | 0.00 | 0.00 | 1,850.0 | 0.0 | 0.0 | 0.0 | 0.00 | 0.00 | 0.00 |
| 1,880.0 | 0.00 | 0.00 | 1,880.0 | 0.0 | 0.0 | 0.0 | 0.00 | 0.00 | 0.00 |
| 1,900.0 | 0.40 | 84.50 | 1,900.0 | 0.0 | 0.1 | 0.0 | 2.00 | 2.00 | 0.00 |
| 1,950.0 | 1.40 | 84.50 | 1,950.0 | 0.1 | 0.9 | 0.1 | 2.00 | 2.00 | 0.00 |
| 2,000.0 | 2.40 | 84.50 | 2,000.0 | 0.2 | 2.5 | 0.3 | 2.00 | 2.00 | 0.00 |
| 2,050.0 | 3.40 | 84.50 | 2,049.9 | 0.5 | 5.0 | 0.7 | 2.00 | 2.00 | 0.00 |
| 2,100.0 | 4.40 | 84.50 | 2,099.8 | 0.8 | 8.4 | 1.2 | 2.00 | 2.00 | 0.00 |
| 2,150.0 | 5.40 | 84.50 | 2,149.6 | 1.2 | 12.7 | 1.8 | 2.00 | 2.00 | 0.00 |
| 2,200.0 | 6.40 | 84.50 | 2,199.3 | 1.7 | 17.8 | 2.5 | 2.00 | 2.00 | 0.00 |
| 2,250.0 | 7.40 | 84.50 | 2,249.0 | 2.3 | 23.8 | 3.3 | 2.00 | 2.00 | 0.00 |
| 2,300.0 | 8.40 | 84.50 | 2,298.5 | 2.9 | 30.6 | 4.3 | 2.00 | 2.00 | 0.00 |
| 2,350.0 | 9.40 | 84.50 | 2,347.9 | 3.7 | 38.3 | 5.3 | 2.00 | 2.00 | 0.00 |
| 2,400.0 | 10.40 | 84.50 | 2,397.1 | 4.5 | 46.8 | 6.5 | 2.00 | 2.00 | 0.00 |
| 2,450.0 | 11.40 | 84.50 | 2,446.2 | 5.4 | 56.3 | 7.8 | 2.00 | 2.00 | 0.00 |
| 2,500.0 | 12.40 | 84.50 | 2,495.2 | 6.4 | 66.5 | 9.3 | 2.00 | 2.00 | 0.00 |
| 2,550.0 | 13.40 | 84.50 | 2,543.9 | 7.5 | 77.6 | 10.8 | 2.00 | 2.00 | 0.00 |

Planning Report

| | | | |
|------------------|-----------------------------------|-------------------------------------|--|
| Database: | Hobbs | Local Co-ordinate Reference: | Site Macho Man 18/19 Fed Com #528H |
| Company: | Mewbourne Oil Company | TVD Reference: | WELL @ 4107.0usft (Original Well Elev) |
| Project: | Lea County, New Mexico NAD 83 | MD Reference: | WELL @ 4107.0usft (Original Well Elev) |
| Site: | Macho Man 18/19 Fed Com #528H | North Reference: | Grid |
| Well: | Sec 18, T18S, R34E | Survey Calculation Method: | Minimum Curvature |
| Wellbore: | BHL: 100' FSL & 660' FEL (Sec 19) | | |
| Design: | Design #1 | | |

| Planned Survey | | | | | | | | | |
|-----------------------|-----------------|-------------|-----------------------|--------------|--------------|-------------------------|-------------------------|------------------------|-----------------------|
| Measured Depth (usft) | Inclination (°) | Azimuth (°) | Vertical Depth (usft) | +N/-S (usft) | +E/-W (usft) | Vertical Section (usft) | Dogleg Rate (°/100usft) | Build Rate (°/100usft) | Turn Rate (°/100usft) |
| 2,600.0 | 14.40 | 84.50 | 2,592.4 | 8.6 | 89.6 | 12.5 | 2.00 | 2.00 | 0.00 |
| 2,650.0 | 15.40 | 84.50 | 2,640.8 | 9.9 | 102.4 | 14.2 | 2.00 | 2.00 | 0.00 |
| 2,697.6 | 16.35 | 84.50 | 2,686.6 | 11.1 | 115.4 | 16.0 | 2.00 | 2.00 | 0.00 |
| 2,700.0 | 16.35 | 84.50 | 2,688.8 | 11.2 | 116.0 | 16.1 | 0.00 | 0.00 | 0.00 |
| 2,750.0 | 16.35 | 84.50 | 2,736.8 | 12.5 | 130.0 | 18.1 | 0.00 | 0.00 | 0.00 |
| 2,800.0 | 16.35 | 84.50 | 2,784.8 | 13.9 | 144.0 | 20.0 | 0.00 | 0.00 | 0.00 |
| 2,850.0 | 16.35 | 84.50 | 2,832.8 | 15.2 | 158.1 | 22.0 | 0.00 | 0.00 | 0.00 |
| 2,900.0 | 16.35 | 84.50 | 2,880.8 | 16.6 | 172.1 | 23.9 | 0.00 | 0.00 | 0.00 |
| 2,950.0 | 16.35 | 84.50 | 2,928.7 | 17.9 | 186.1 | 25.9 | 0.00 | 0.00 | 0.00 |
| 3,000.0 | 16.35 | 84.50 | 2,976.7 | 19.3 | 200.1 | 27.8 | 0.00 | 0.00 | 0.00 |
| 3,050.0 | 16.35 | 84.50 | 3,024.7 | 20.6 | 214.1 | 29.8 | 0.00 | 0.00 | 0.00 |
| 3,100.0 | 16.35 | 84.50 | 3,072.7 | 22.0 | 228.1 | 31.7 | 0.00 | 0.00 | 0.00 |
| 3,150.0 | 16.35 | 84.50 | 3,120.6 | 23.3 | 242.1 | 33.7 | 0.00 | 0.00 | 0.00 |
| 3,200.0 | 16.35 | 84.50 | 3,168.6 | 24.7 | 256.1 | 35.6 | 0.00 | 0.00 | 0.00 |
| 3,250.0 | 16.35 | 84.50 | 3,216.6 | 26.0 | 270.2 | 37.6 | 0.00 | 0.00 | 0.00 |
| 3,300.0 | 16.35 | 84.50 | 3,264.6 | 27.4 | 284.2 | 39.5 | 0.00 | 0.00 | 0.00 |
| 3,350.0 | 16.35 | 84.50 | 3,312.6 | 28.7 | 298.2 | 41.5 | 0.00 | 0.00 | 0.00 |
| 3,400.0 | 16.35 | 84.50 | 3,360.5 | 30.1 | 312.2 | 43.4 | 0.00 | 0.00 | 0.00 |
| 3,450.0 | 16.35 | 84.50 | 3,408.5 | 31.4 | 326.2 | 45.4 | 0.00 | 0.00 | 0.00 |
| 3,500.0 | 16.35 | 84.50 | 3,456.5 | 32.8 | 340.2 | 47.3 | 0.00 | 0.00 | 0.00 |
| 3,550.0 | 16.35 | 84.50 | 3,504.5 | 34.1 | 354.2 | 49.3 | 0.00 | 0.00 | 0.00 |
| 3,600.0 | 16.35 | 84.50 | 3,552.4 | 35.5 | 368.3 | 51.2 | 0.00 | 0.00 | 0.00 |
| 3,650.0 | 16.35 | 84.50 | 3,600.4 | 36.8 | 382.3 | 53.2 | 0.00 | 0.00 | 0.00 |
| 3,700.0 | 16.35 | 84.50 | 3,648.4 | 38.2 | 396.3 | 55.1 | 0.00 | 0.00 | 0.00 |
| 3,750.0 | 16.35 | 84.50 | 3,696.4 | 39.5 | 410.3 | 57.1 | 0.00 | 0.00 | 0.00 |
| 3,800.0 | 16.35 | 84.50 | 3,744.3 | 40.9 | 424.3 | 59.0 | 0.00 | 0.00 | 0.00 |
| 3,850.0 | 16.35 | 84.50 | 3,792.3 | 42.2 | 438.3 | 61.0 | 0.00 | 0.00 | 0.00 |
| 3,900.0 | 16.35 | 84.50 | 3,840.3 | 43.6 | 452.3 | 62.9 | 0.00 | 0.00 | 0.00 |
| 3,950.0 | 16.35 | 84.50 | 3,888.3 | 44.9 | 466.3 | 64.9 | 0.00 | 0.00 | 0.00 |
| 4,000.0 | 16.35 | 84.50 | 3,936.3 | 46.3 | 480.4 | 66.8 | 0.00 | 0.00 | 0.00 |
| 4,050.0 | 16.35 | 84.50 | 3,984.2 | 47.6 | 494.4 | 68.8 | 0.00 | 0.00 | 0.00 |
| 4,100.0 | 16.35 | 84.50 | 4,032.2 | 49.0 | 508.4 | 70.7 | 0.00 | 0.00 | 0.00 |
| 4,150.0 | 16.35 | 84.50 | 4,080.2 | 50.3 | 522.4 | 72.7 | 0.00 | 0.00 | 0.00 |
| 4,200.0 | 16.35 | 84.50 | 4,128.2 | 51.7 | 536.4 | 74.6 | 0.00 | 0.00 | 0.00 |
| 4,250.0 | 16.35 | 84.50 | 4,176.1 | 53.0 | 550.4 | 76.6 | 0.00 | 0.00 | 0.00 |
| 4,300.0 | 16.35 | 84.50 | 4,224.1 | 54.4 | 564.4 | 78.5 | 0.00 | 0.00 | 0.00 |
| 4,350.0 | 16.35 | 84.50 | 4,272.1 | 55.7 | 578.4 | 80.5 | 0.00 | 0.00 | 0.00 |
| 4,400.0 | 16.35 | 84.50 | 4,320.1 | 57.1 | 592.5 | 82.4 | 0.00 | 0.00 | 0.00 |
| 4,450.0 | 16.35 | 84.50 | 4,368.1 | 58.4 | 606.5 | 84.4 | 0.00 | 0.00 | 0.00 |
| 4,500.0 | 16.35 | 84.50 | 4,416.0 | 59.8 | 620.5 | 86.3 | 0.00 | 0.00 | 0.00 |
| 4,550.0 | 16.35 | 84.50 | 4,464.0 | 61.1 | 634.5 | 88.2 | 0.00 | 0.00 | 0.00 |
| 4,600.0 | 16.35 | 84.50 | 4,512.0 | 62.4 | 648.5 | 90.2 | 0.00 | 0.00 | 0.00 |
| 4,650.0 | 16.35 | 84.50 | 4,560.0 | 63.8 | 662.5 | 92.1 | 0.00 | 0.00 | 0.00 |
| 4,700.0 | 16.35 | 84.50 | 4,607.9 | 65.1 | 676.5 | 94.1 | 0.00 | 0.00 | 0.00 |
| 4,750.0 | 16.35 | 84.50 | 4,655.9 | 66.5 | 690.5 | 96.0 | 0.00 | 0.00 | 0.00 |
| 4,800.0 | 16.35 | 84.50 | 4,703.9 | 67.8 | 704.6 | 98.0 | 0.00 | 0.00 | 0.00 |
| 4,850.0 | 16.35 | 84.50 | 4,751.9 | 69.2 | 718.6 | 99.9 | 0.00 | 0.00 | 0.00 |
| 4,900.0 | 16.35 | 84.50 | 4,799.8 | 70.5 | 732.6 | 101.9 | 0.00 | 0.00 | 0.00 |
| 4,950.0 | 16.35 | 84.50 | 4,847.8 | 71.9 | 746.6 | 103.8 | 0.00 | 0.00 | 0.00 |
| 5,000.0 | 16.35 | 84.50 | 4,895.8 | 73.2 | 760.6 | 105.8 | 0.00 | 0.00 | 0.00 |
| 5,050.0 | 16.35 | 84.50 | 4,943.8 | 74.6 | 774.6 | 107.7 | 0.00 | 0.00 | 0.00 |
| 5,100.0 | 16.35 | 84.50 | 4,991.8 | 75.9 | 788.6 | 109.7 | 0.00 | 0.00 | 0.00 |
| 5,150.0 | 16.35 | 84.50 | 5,039.7 | 77.3 | 802.6 | 111.6 | 0.00 | 0.00 | 0.00 |
| 5,200.0 | 16.35 | 84.50 | 5,087.7 | 78.6 | 816.7 | 113.6 | 0.00 | 0.00 | 0.00 |

Planning Report

| | | | |
|------------------|-----------------------------------|-------------------------------------|--|
| Database: | Hobbs | Local Co-ordinate Reference: | Site Macho Man 18/19 Fed Com #528H |
| Company: | Mewbourne Oil Company | TVD Reference: | WELL @ 4107.0usft (Original Well Elev) |
| Project: | Lea County, New Mexico NAD 83 | MD Reference: | WELL @ 4107.0usft (Original Well Elev) |
| Site: | Macho Man 18/19 Fed Com #528H | North Reference: | Grid |
| Well: | Sec 18, T18S, R34E | Survey Calculation Method: | Minimum Curvature |
| Wellbore: | BHL: 100' FSL & 660' FEL (Sec 19) | | |
| Design: | Design #1 | | |

| Planned Survey | | | | | | | | | | |
|-----------------------|-----------------|-------------|-----------------------|--------------|--------------|-------------------------|-------------------------|------------------------|-----------------------|--|
| Measured Depth (usft) | Inclination (°) | Azimuth (°) | Vertical Depth (usft) | +N/-S (usft) | +E/-W (usft) | Vertical Section (usft) | Dogleg Rate (°/100usft) | Build Rate (°/100usft) | Turn Rate (°/100usft) | |
| 5,250.0 | 16.35 | 84.50 | 5,135.7 | 80.0 | 830.7 | 115.5 | 0.00 | 0.00 | 0.00 | |
| 5,300.0 | 16.35 | 84.50 | 5,183.7 | 81.3 | 844.7 | 117.5 | 0.00 | 0.00 | 0.00 | |
| 5,350.0 | 16.35 | 84.50 | 5,231.6 | 82.7 | 858.7 | 119.4 | 0.00 | 0.00 | 0.00 | |
| 5,400.0 | 16.35 | 84.50 | 5,279.6 | 84.0 | 872.7 | 121.4 | 0.00 | 0.00 | 0.00 | |
| 5,450.0 | 16.35 | 84.50 | 5,327.6 | 85.4 | 886.7 | 123.3 | 0.00 | 0.00 | 0.00 | |
| 5,500.0 | 16.35 | 84.50 | 5,375.6 | 86.7 | 900.7 | 125.3 | 0.00 | 0.00 | 0.00 | |
| 5,550.0 | 16.35 | 84.50 | 5,423.6 | 88.1 | 914.8 | 127.2 | 0.00 | 0.00 | 0.00 | |
| 5,600.0 | 16.35 | 84.50 | 5,471.5 | 89.4 | 928.8 | 129.2 | 0.00 | 0.00 | 0.00 | |
| 5,650.0 | 16.35 | 84.50 | 5,519.5 | 90.8 | 942.8 | 131.1 | 0.00 | 0.00 | 0.00 | |
| 5,700.0 | 16.35 | 84.50 | 5,567.5 | 92.1 | 956.8 | 133.1 | 0.00 | 0.00 | 0.00 | |
| 5,750.0 | 16.35 | 84.50 | 5,615.5 | 93.5 | 970.8 | 135.0 | 0.00 | 0.00 | 0.00 | |
| 5,800.0 | 16.35 | 84.50 | 5,663.4 | 94.8 | 984.8 | 137.0 | 0.00 | 0.00 | 0.00 | |
| 5,850.0 | 16.35 | 84.50 | 5,711.4 | 96.2 | 998.8 | 138.9 | 0.00 | 0.00 | 0.00 | |
| 5,900.0 | 16.35 | 84.50 | 5,759.4 | 97.5 | 1,012.8 | 140.9 | 0.00 | 0.00 | 0.00 | |
| 5,950.0 | 16.35 | 84.50 | 5,807.4 | 98.9 | 1,026.9 | 142.8 | 0.00 | 0.00 | 0.00 | |
| 6,000.0 | 16.35 | 84.50 | 5,855.3 | 100.2 | 1,040.9 | 144.8 | 0.00 | 0.00 | 0.00 | |
| 6,050.0 | 16.35 | 84.50 | 5,903.3 | 101.6 | 1,054.9 | 146.7 | 0.00 | 0.00 | 0.00 | |
| 6,100.0 | 16.35 | 84.50 | 5,951.3 | 102.9 | 1,068.9 | 148.7 | 0.00 | 0.00 | 0.00 | |
| 6,150.0 | 16.35 | 84.50 | 5,999.3 | 104.3 | 1,082.9 | 150.6 | 0.00 | 0.00 | 0.00 | |
| 6,200.0 | 16.35 | 84.50 | 6,047.3 | 105.6 | 1,096.9 | 152.6 | 0.00 | 0.00 | 0.00 | |
| 6,250.0 | 16.35 | 84.50 | 6,095.2 | 107.0 | 1,110.9 | 154.5 | 0.00 | 0.00 | 0.00 | |
| 6,300.0 | 16.35 | 84.50 | 6,143.2 | 108.3 | 1,124.9 | 156.5 | 0.00 | 0.00 | 0.00 | |
| 6,350.0 | 16.35 | 84.50 | 6,191.2 | 109.7 | 1,139.0 | 158.4 | 0.00 | 0.00 | 0.00 | |
| 6,400.0 | 16.35 | 84.50 | 6,239.2 | 111.0 | 1,153.0 | 160.4 | 0.00 | 0.00 | 0.00 | |
| 6,450.0 | 16.35 | 84.50 | 6,287.1 | 112.4 | 1,167.0 | 162.3 | 0.00 | 0.00 | 0.00 | |
| 6,500.0 | 16.35 | 84.50 | 6,335.1 | 113.7 | 1,181.0 | 164.3 | 0.00 | 0.00 | 0.00 | |
| 6,550.0 | 16.35 | 84.50 | 6,383.1 | 115.1 | 1,195.0 | 166.2 | 0.00 | 0.00 | 0.00 | |
| 6,600.0 | 16.35 | 84.50 | 6,431.1 | 116.4 | 1,209.0 | 168.2 | 0.00 | 0.00 | 0.00 | |
| 6,650.0 | 16.35 | 84.50 | 6,479.1 | 117.8 | 1,223.0 | 170.1 | 0.00 | 0.00 | 0.00 | |
| 6,700.0 | 16.35 | 84.50 | 6,527.0 | 119.1 | 1,237.0 | 172.1 | 0.00 | 0.00 | 0.00 | |
| 6,750.0 | 16.35 | 84.50 | 6,575.0 | 120.5 | 1,251.1 | 174.0 | 0.00 | 0.00 | 0.00 | |
| 6,800.0 | 16.35 | 84.50 | 6,623.0 | 121.8 | 1,265.1 | 176.0 | 0.00 | 0.00 | 0.00 | |
| 6,850.0 | 16.35 | 84.50 | 6,671.0 | 123.2 | 1,279.1 | 177.9 | 0.00 | 0.00 | 0.00 | |
| 6,900.0 | 16.35 | 84.50 | 6,718.9 | 124.5 | 1,293.1 | 179.9 | 0.00 | 0.00 | 0.00 | |
| 6,950.0 | 16.35 | 84.50 | 6,766.9 | 125.9 | 1,307.1 | 181.8 | 0.00 | 0.00 | 0.00 | |
| 7,000.0 | 16.35 | 84.50 | 6,814.9 | 127.2 | 1,321.1 | 183.7 | 0.00 | 0.00 | 0.00 | |
| 7,050.0 | 16.35 | 84.50 | 6,862.9 | 128.6 | 1,335.1 | 185.7 | 0.00 | 0.00 | 0.00 | |
| 7,100.0 | 16.35 | 84.50 | 6,910.8 | 129.9 | 1,349.1 | 187.6 | 0.00 | 0.00 | 0.00 | |
| 7,150.0 | 16.35 | 84.50 | 6,958.8 | 131.3 | 1,363.2 | 189.6 | 0.00 | 0.00 | 0.00 | |
| 7,200.0 | 16.35 | 84.50 | 7,006.8 | 132.6 | 1,377.2 | 191.5 | 0.00 | 0.00 | 0.00 | |
| 7,250.0 | 16.35 | 84.50 | 7,054.8 | 134.0 | 1,391.2 | 193.5 | 0.00 | 0.00 | 0.00 | |
| 7,300.0 | 16.35 | 84.50 | 7,102.8 | 135.3 | 1,405.2 | 195.4 | 0.00 | 0.00 | 0.00 | |
| 7,350.0 | 16.35 | 84.50 | 7,150.7 | 136.7 | 1,419.2 | 197.4 | 0.00 | 0.00 | 0.00 | |
| 7,400.0 | 16.35 | 84.50 | 7,198.7 | 138.0 | 1,433.2 | 199.3 | 0.00 | 0.00 | 0.00 | |
| 7,450.0 | 16.35 | 84.50 | 7,246.7 | 139.4 | 1,447.2 | 201.3 | 0.00 | 0.00 | 0.00 | |
| 7,500.0 | 16.35 | 84.50 | 7,294.7 | 140.7 | 1,461.3 | 203.2 | 0.00 | 0.00 | 0.00 | |
| 7,550.0 | 16.35 | 84.50 | 7,342.6 | 142.1 | 1,475.3 | 205.2 | 0.00 | 0.00 | 0.00 | |
| 7,600.0 | 16.35 | 84.50 | 7,390.6 | 143.4 | 1,489.3 | 207.1 | 0.00 | 0.00 | 0.00 | |
| 7,650.0 | 16.35 | 84.50 | 7,438.6 | 144.8 | 1,503.3 | 209.1 | 0.00 | 0.00 | 0.00 | |
| 7,700.0 | 16.35 | 84.50 | 7,486.6 | 146.1 | 1,517.3 | 211.0 | 0.00 | 0.00 | 0.00 | |
| 7,750.0 | 16.35 | 84.50 | 7,534.6 | 147.5 | 1,531.3 | 213.0 | 0.00 | 0.00 | 0.00 | |
| 7,800.0 | 16.35 | 84.50 | 7,582.5 | 148.8 | 1,545.3 | 214.9 | 0.00 | 0.00 | 0.00 | |
| 7,850.0 | 16.35 | 84.50 | 7,630.5 | 150.2 | 1,559.3 | 216.9 | 0.00 | 0.00 | 0.00 | |
| 7,900.0 | 16.35 | 84.50 | 7,678.5 | 151.5 | 1,573.4 | 218.8 | 0.00 | 0.00 | 0.00 | |

Planning Report

| | | | |
|------------------|-----------------------------------|-------------------------------------|--|
| Database: | Hobbs | Local Co-ordinate Reference: | Site Macho Man 18/19 Fed Com #528H |
| Company: | Mewbourne Oil Company | TVD Reference: | WELL @ 4107.0usft (Original Well Elev) |
| Project: | Lea County, New Mexico NAD 83 | MD Reference: | WELL @ 4107.0usft (Original Well Elev) |
| Site: | Macho Man 18/19 Fed Com #528H | North Reference: | Grid |
| Well: | Sec 18, T18S, R34E | Survey Calculation Method: | Minimum Curvature |
| Wellbore: | BHL: 100' FSL & 660' FEL (Sec 19) | | |
| Design: | Design #1 | | |

| Planned Survey | | | | | | | | | |
|--|-----------------|-------------|-----------------------|--------------|--------------|-------------------------|-------------------------|------------------------|-----------------------|
| Measured Depth (usft) | Inclination (°) | Azimuth (°) | Vertical Depth (usft) | +N/-S (usft) | +E/-W (usft) | Vertical Section (usft) | Dogleg Rate (°/100usft) | Build Rate (°/100usft) | Turn Rate (°/100usft) |
| 7,950.0 | 16.35 | 84.50 | 7,726.5 | 152.9 | 1,587.4 | 220.8 | 0.00 | 0.00 | 0.00 |
| 8,000.0 | 16.35 | 84.50 | 7,774.4 | 154.2 | 1,601.4 | 222.7 | 0.00 | 0.00 | 0.00 |
| 8,050.0 | 16.35 | 84.50 | 7,822.4 | 155.6 | 1,615.4 | 224.7 | 0.00 | 0.00 | 0.00 |
| 8,100.0 | 16.35 | 84.50 | 7,870.4 | 156.9 | 1,629.4 | 226.6 | 0.00 | 0.00 | 0.00 |
| 8,150.0 | 16.35 | 84.50 | 7,918.4 | 158.3 | 1,643.4 | 228.6 | 0.00 | 0.00 | 0.00 |
| 8,200.0 | 16.35 | 84.50 | 7,966.4 | 159.6 | 1,657.4 | 230.5 | 0.00 | 0.00 | 0.00 |
| 8,250.0 | 16.35 | 84.50 | 8,014.3 | 161.0 | 1,671.4 | 232.5 | 0.00 | 0.00 | 0.00 |
| 8,300.0 | 16.35 | 84.50 | 8,062.3 | 162.3 | 1,685.5 | 234.4 | 0.00 | 0.00 | 0.00 |
| 8,350.0 | 16.35 | 84.50 | 8,110.3 | 163.7 | 1,699.5 | 236.4 | 0.00 | 0.00 | 0.00 |
| 8,400.0 | 16.35 | 84.50 | 8,158.3 | 165.0 | 1,713.5 | 238.3 | 0.00 | 0.00 | 0.00 |
| 8,450.0 | 16.35 | 84.50 | 8,206.2 | 166.4 | 1,727.5 | 240.3 | 0.00 | 0.00 | 0.00 |
| 8,500.0 | 16.35 | 84.50 | 8,254.2 | 167.7 | 1,741.5 | 242.2 | 0.00 | 0.00 | 0.00 |
| 8,503.3 | 16.35 | 84.50 | 8,257.4 | 167.8 | 1,742.4 | 242.3 | 0.00 | 0.00 | 0.00 |
| 8,550.0 | 15.42 | 84.50 | 8,302.3 | 169.0 | 1,755.2 | 244.1 | 2.00 | -2.00 | 0.00 |
| 8,600.0 | 14.42 | 84.50 | 8,350.6 | 170.2 | 1,768.0 | 245.9 | 2.00 | -2.00 | 0.00 |
| 8,650.0 | 13.42 | 84.50 | 8,399.1 | 171.4 | 1,779.9 | 247.6 | 2.00 | -2.00 | 0.00 |
| 8,700.0 | 12.42 | 84.50 | 8,447.9 | 172.5 | 1,791.1 | 249.1 | 2.00 | -2.00 | 0.00 |
| 8,750.0 | 11.42 | 84.50 | 8,496.8 | 173.5 | 1,801.3 | 250.5 | 2.00 | -2.00 | 0.00 |
| 8,800.0 | 10.42 | 84.50 | 8,545.9 | 174.4 | 1,810.8 | 251.9 | 2.00 | -2.00 | 0.00 |
| 8,850.0 | 9.42 | 84.50 | 8,595.1 | 175.2 | 1,819.4 | 253.0 | 2.00 | -2.00 | 0.00 |
| 8,900.0 | 8.42 | 84.50 | 8,644.5 | 175.9 | 1,827.1 | 254.1 | 2.00 | -2.00 | 0.00 |
| 8,950.0 | 7.42 | 84.50 | 8,694.1 | 176.6 | 1,833.9 | 255.1 | 2.00 | -2.00 | 0.00 |
| 9,000.0 | 6.42 | 84.50 | 8,743.7 | 177.2 | 1,839.9 | 255.9 | 2.00 | -2.00 | 0.00 |
| 9,050.0 | 5.42 | 84.50 | 8,793.4 | 177.7 | 1,845.1 | 256.6 | 2.00 | -2.00 | 0.00 |
| 9,100.0 | 4.42 | 84.50 | 8,843.2 | 178.1 | 1,849.3 | 257.2 | 2.00 | -2.00 | 0.00 |
| 9,150.0 | 3.42 | 84.50 | 8,893.1 | 178.4 | 1,852.7 | 257.7 | 2.00 | -2.00 | 0.00 |
| 9,200.0 | 2.42 | 84.50 | 8,943.1 | 178.7 | 1,855.3 | 258.0 | 2.00 | -2.00 | 0.00 |
| 9,250.0 | 1.42 | 84.50 | 8,993.0 | 178.8 | 1,856.9 | 258.3 | 2.00 | -2.00 | 0.00 |
| 9,300.0 | 0.42 | 84.50 | 9,043.0 | 178.9 | 1,857.7 | 258.4 | 2.00 | -2.00 | 0.00 |
| 9,321.0 | 0.00 | 0.00 | 9,064.0 | 178.9 | 1,857.8 | 258.4 | 2.00 | -2.00 | 0.00 |
| KOP: 2167' FNL & 660' FEL (Sec 18) | | | | | | | | | |
| 9,350.0 | 2.90 | 179.42 | 9,093.0 | 178.2 | 1,857.8 | 259.1 | 9.99 | 9.99 | 0.00 |
| 9,400.0 | 7.89 | 179.42 | 9,142.8 | 173.5 | 1,857.9 | 263.7 | 9.99 | 9.99 | 0.00 |
| 9,450.0 | 12.88 | 179.42 | 9,191.9 | 164.5 | 1,857.9 | 272.5 | 9.99 | 9.99 | 0.00 |
| 9,500.0 | 17.88 | 179.42 | 9,240.1 | 151.2 | 1,858.1 | 285.4 | 9.99 | 9.99 | 0.00 |
| 9,550.0 | 22.87 | 179.42 | 9,287.0 | 133.8 | 1,858.3 | 302.4 | 9.99 | 9.99 | 0.00 |
| 9,600.0 | 27.86 | 179.42 | 9,332.2 | 112.4 | 1,858.5 | 323.2 | 9.99 | 9.99 | 0.00 |
| 9,650.0 | 32.86 | 179.42 | 9,375.3 | 87.1 | 1,858.7 | 347.9 | 9.99 | 9.99 | 0.00 |
| 9,700.0 | 37.85 | 179.42 | 9,416.1 | 58.2 | 1,859.0 | 376.1 | 9.99 | 9.99 | 0.00 |
| 9,750.0 | 42.84 | 179.42 | 9,454.1 | 25.8 | 1,859.3 | 407.6 | 9.99 | 9.99 | 0.00 |
| 9,800.0 | 47.84 | 179.42 | 9,489.3 | -9.7 | 1,859.7 | 442.3 | 9.99 | 9.99 | 0.00 |
| 9,850.0 | 52.83 | 179.42 | 9,521.2 | -48.2 | 1,860.1 | 479.8 | 9.99 | 9.99 | 0.00 |
| 9,900.0 | 57.82 | 179.42 | 9,549.6 | -89.3 | 1,860.5 | 519.8 | 9.99 | 9.99 | 0.00 |
| 9,950.0 | 62.81 | 179.42 | 9,574.4 | -132.7 | 1,860.9 | 562.2 | 9.99 | 9.99 | 0.00 |
| 10,000.0 | 67.81 | 179.42 | 9,595.3 | -178.1 | 1,861.4 | 606.4 | 9.99 | 9.99 | 0.00 |
| 10,050.0 | 72.80 | 179.42 | 9,612.1 | -225.2 | 1,861.9 | 652.3 | 9.99 | 9.99 | 0.00 |
| 10,100.0 | 77.79 | 179.42 | 9,624.8 | -273.5 | 1,862.4 | 699.4 | 9.99 | 9.99 | 0.00 |
| 10,150.0 | 82.79 | 179.42 | 9,633.2 | -322.8 | 1,862.8 | 747.5 | 9.99 | 9.99 | 0.00 |
| 10,192.6 | 87.04 | 179.42 | 9,637.0 | -365.2 | 1,863.3 | 788.9 | 9.99 | 9.99 | 0.00 |
| 10,200.0 | 87.04 | 179.42 | 9,637.4 | -372.6 | 1,863.3 | 796.0 | 0.00 | 0.00 | 0.00 |
| 10,221.3 | 87.04 | 179.42 | 9,638.5 | -393.8 | 1,863.6 | 816.7 | 0.00 | 0.00 | 0.00 |
| FTP / LP: 2540' FSL & 660' FEL (Sec 18) | | | | | | | | | |
| 10,250.0 | 87.04 | 179.42 | 9,640.0 | -422.5 | 1,863.9 | 844.7 | 0.00 | 0.00 | 0.00 |
| 10,300.0 | 87.04 | 179.42 | 9,642.5 | -472.5 | 1,864.4 | 893.4 | 0.00 | 0.00 | 0.00 |

Planning Report

| | | | |
|------------------|-----------------------------------|-------------------------------------|--|
| Database: | Hobbs | Local Co-ordinate Reference: | Site Macho Man 18/19 Fed Com #528H |
| Company: | Mewbourne Oil Company | TVD Reference: | WELL @ 4107.0usft (Original Well Elev) |
| Project: | Lea County, New Mexico NAD 83 | MD Reference: | WELL @ 4107.0usft (Original Well Elev) |
| Site: | Macho Man 18/19 Fed Com #528H | North Reference: | Grid |
| Well: | Sec 18, T18S, R34E | Survey Calculation Method: | Minimum Curvature |
| Wellbore: | BHL: 100' FSL & 660' FEL (Sec 19) | | |
| Design: | Design #1 | | |

| Planned Survey | | | | | | | | | |
|----------------------------------|-----------------|-------------|-----------------------|--------------|--------------|-------------------------|-------------------------|------------------------|-----------------------|
| Measured Depth (usft) | Inclination (°) | Azimuth (°) | Vertical Depth (usft) | +N/-S (usft) | +E/-W (usft) | Vertical Section (usft) | Dogleg Rate (°/100usft) | Build Rate (°/100usft) | Turn Rate (°/100usft) |
| 10,350.0 | 87.04 | 179.42 | 9,645.1 | -522.4 | 1,864.9 | 942.1 | 0.00 | 0.00 | 0.00 |
| 10,400.0 | 87.04 | 179.42 | 9,647.7 | -572.3 | 1,865.4 | 990.7 | 0.00 | 0.00 | 0.00 |
| 10,450.0 | 87.04 | 179.42 | 9,650.3 | -622.3 | 1,865.9 | 1,039.4 | 0.00 | 0.00 | 0.00 |
| 10,500.0 | 87.04 | 179.42 | 9,652.8 | -672.2 | 1,866.4 | 1,088.1 | 0.00 | 0.00 | 0.00 |
| 10,550.0 | 87.04 | 179.42 | 9,655.4 | -722.1 | 1,866.9 | 1,136.8 | 0.00 | 0.00 | 0.00 |
| 10,600.0 | 87.04 | 179.42 | 9,658.0 | -772.0 | 1,867.4 | 1,185.4 | 0.00 | 0.00 | 0.00 |
| 10,650.0 | 87.04 | 179.42 | 9,660.6 | -822.0 | 1,867.9 | 1,234.1 | 0.00 | 0.00 | 0.00 |
| 10,700.0 | 87.04 | 179.42 | 9,663.2 | -871.9 | 1,868.4 | 1,282.8 | 0.00 | 0.00 | 0.00 |
| 10,750.0 | 87.04 | 179.42 | 9,665.7 | -921.8 | 1,868.9 | 1,331.5 | 0.00 | 0.00 | 0.00 |
| 10,800.0 | 87.04 | 179.42 | 9,668.3 | -971.8 | 1,869.4 | 1,380.2 | 0.00 | 0.00 | 0.00 |
| 10,850.0 | 87.04 | 179.42 | 9,670.9 | -1,021.7 | 1,869.9 | 1,428.8 | 0.00 | 0.00 | 0.00 |
| 10,900.0 | 87.04 | 179.42 | 9,673.5 | -1,071.6 | 1,870.4 | 1,477.5 | 0.00 | 0.00 | 0.00 |
| 10,950.0 | 87.04 | 179.42 | 9,676.1 | -1,121.6 | 1,870.9 | 1,526.2 | 0.00 | 0.00 | 0.00 |
| 11,000.0 | 87.04 | 179.42 | 9,678.6 | -1,171.5 | 1,871.4 | 1,574.9 | 0.00 | 0.00 | 0.00 |
| 11,050.0 | 87.04 | 179.42 | 9,681.2 | -1,221.4 | 1,871.9 | 1,623.5 | 0.00 | 0.00 | 0.00 |
| 11,100.0 | 87.04 | 179.42 | 9,683.8 | -1,271.4 | 1,872.4 | 1,672.2 | 0.00 | 0.00 | 0.00 |
| 11,150.0 | 87.04 | 179.42 | 9,686.4 | -1,321.3 | 1,872.9 | 1,720.9 | 0.00 | 0.00 | 0.00 |
| 11,200.0 | 87.04 | 179.42 | 9,688.9 | -1,371.2 | 1,873.4 | 1,769.6 | 0.00 | 0.00 | 0.00 |
| 11,250.0 | 87.04 | 179.42 | 9,691.5 | -1,421.1 | 1,873.9 | 1,818.2 | 0.00 | 0.00 | 0.00 |
| 11,300.0 | 87.04 | 179.42 | 9,694.1 | -1,471.1 | 1,874.4 | 1,866.9 | 0.00 | 0.00 | 0.00 |
| 11,350.0 | 87.04 | 179.42 | 9,696.7 | -1,521.0 | 1,874.9 | 1,915.6 | 0.00 | 0.00 | 0.00 |
| 11,400.0 | 87.04 | 179.42 | 9,699.3 | -1,570.9 | 1,875.4 | 1,964.3 | 0.00 | 0.00 | 0.00 |
| 11,450.0 | 87.04 | 179.42 | 9,701.8 | -1,620.9 | 1,875.9 | 2,013.0 | 0.00 | 0.00 | 0.00 |
| 11,500.0 | 87.04 | 179.42 | 9,704.4 | -1,670.8 | 1,876.4 | 2,061.6 | 0.00 | 0.00 | 0.00 |
| 11,550.0 | 87.04 | 179.42 | 9,707.0 | -1,720.7 | 1,876.9 | 2,110.3 | 0.00 | 0.00 | 0.00 |
| 11,600.0 | 87.04 | 179.42 | 9,709.6 | -1,770.7 | 1,877.4 | 2,159.0 | 0.00 | 0.00 | 0.00 |
| 11,650.0 | 87.04 | 179.42 | 9,712.1 | -1,820.6 | 1,877.9 | 2,207.7 | 0.00 | 0.00 | 0.00 |
| 11,700.0 | 87.04 | 179.42 | 9,714.7 | -1,870.5 | 1,878.4 | 2,256.3 | 0.00 | 0.00 | 0.00 |
| 11,750.0 | 87.04 | 179.42 | 9,717.3 | -1,920.5 | 1,878.9 | 2,305.0 | 0.00 | 0.00 | 0.00 |
| 11,800.0 | 87.04 | 179.42 | 9,719.9 | -1,970.4 | 1,879.4 | 2,353.7 | 0.00 | 0.00 | 0.00 |
| 11,850.0 | 87.04 | 179.42 | 9,722.5 | -2,020.3 | 1,879.9 | 2,402.4 | 0.00 | 0.00 | 0.00 |
| 11,900.0 | 87.04 | 179.42 | 9,725.0 | -2,070.2 | 1,880.4 | 2,451.0 | 0.00 | 0.00 | 0.00 |
| 11,950.0 | 87.04 | 179.42 | 9,727.6 | -2,120.2 | 1,880.9 | 2,499.7 | 0.00 | 0.00 | 0.00 |
| 12,000.0 | 87.04 | 179.42 | 9,730.2 | -2,170.1 | 1,881.4 | 2,548.4 | 0.00 | 0.00 | 0.00 |
| 12,050.0 | 87.04 | 179.42 | 9,732.8 | -2,220.0 | 1,881.9 | 2,597.1 | 0.00 | 0.00 | 0.00 |
| 12,100.0 | 87.04 | 179.42 | 9,735.4 | -2,270.0 | 1,882.4 | 2,645.8 | 0.00 | 0.00 | 0.00 |
| 12,150.0 | 87.04 | 179.42 | 9,737.9 | -2,319.9 | 1,882.9 | 2,694.4 | 0.00 | 0.00 | 0.00 |
| 12,200.0 | 87.04 | 179.42 | 9,740.5 | -2,369.8 | 1,883.4 | 2,743.1 | 0.00 | 0.00 | 0.00 |
| 12,250.0 | 87.04 | 179.42 | 9,743.1 | -2,419.8 | 1,883.9 | 2,791.8 | 0.00 | 0.00 | 0.00 |
| 12,300.0 | 87.04 | 179.42 | 9,745.7 | -2,469.7 | 1,884.4 | 2,840.5 | 0.00 | 0.00 | 0.00 |
| 12,350.0 | 87.04 | 179.42 | 9,748.2 | -2,519.6 | 1,884.9 | 2,889.1 | 0.00 | 0.00 | 0.00 |
| 12,400.0 | 87.04 | 179.42 | 9,750.8 | -2,569.6 | 1,885.4 | 2,937.8 | 0.00 | 0.00 | 0.00 |
| 12,450.0 | 87.04 | 179.42 | 9,753.4 | -2,619.5 | 1,886.0 | 2,986.5 | 0.00 | 0.00 | 0.00 |
| 12,500.0 | 87.04 | 179.42 | 9,756.0 | -2,669.4 | 1,886.5 | 3,035.2 | 0.00 | 0.00 | 0.00 |
| 12,550.0 | 87.04 | 179.42 | 9,758.6 | -2,719.4 | 1,887.0 | 3,083.8 | 0.00 | 0.00 | 0.00 |
| 12,600.0 | 87.04 | 179.42 | 9,761.1 | -2,769.3 | 1,887.5 | 3,132.5 | 0.00 | 0.00 | 0.00 |
| 12,650.0 | 87.04 | 179.42 | 9,763.7 | -2,819.2 | 1,888.0 | 3,181.2 | 0.00 | 0.00 | 0.00 |
| 12,700.0 | 87.04 | 179.42 | 9,766.3 | -2,869.1 | 1,888.5 | 3,229.9 | 0.00 | 0.00 | 0.00 |
| 12,750.0 | 87.04 | 179.42 | 9,768.9 | -2,919.1 | 1,889.0 | 3,278.5 | 0.00 | 0.00 | 0.00 |
| 12,763.7 | 87.04 | 179.42 | 9,769.6 | -2,932.8 | 1,889.1 | 3,291.9 | 0.00 | 0.00 | 0.00 |
| PPP2: 0' FNL & 660' FEL (Sec 19) | | | | | | | | | |
| 12,800.0 | 87.04 | 179.42 | 9,771.4 | -2,969.0 | 1,889.5 | 3,327.2 | 0.00 | 0.00 | 0.00 |
| 12,850.0 | 87.04 | 179.42 | 9,774.0 | -3,018.9 | 1,890.0 | 3,375.9 | 0.00 | 0.00 | 0.00 |

Planning Report

| | | | |
|------------------|-----------------------------------|-------------------------------------|--|
| Database: | Hobbs | Local Co-ordinate Reference: | Site Macho Man 18/19 Fed Com #528H |
| Company: | Mewbourne Oil Company | TVD Reference: | WELL @ 4107.0usft (Original Well Elev) |
| Project: | Lea County, New Mexico NAD 83 | MD Reference: | WELL @ 4107.0usft (Original Well Elev) |
| Site: | Macho Man 18/19 Fed Com #528H | North Reference: | Grid |
| Well: | Sec 18, T18S, R34E | Survey Calculation Method: | Minimum Curvature |
| Wellbore: | BHL: 100' FSL & 660' FEL (Sec 19) | | |
| Design: | Design #1 | | |

| Planned Survey | | | | | | | | | |
|-------------------------------------|-----------------|-------------|-----------------------|--------------|--------------|-------------------------|-------------------------|------------------------|-----------------------|
| Measured Depth (usft) | Inclination (°) | Azimuth (°) | Vertical Depth (usft) | +N/-S (usft) | +E/-W (usft) | Vertical Section (usft) | Dogleg Rate (°/100usft) | Build Rate (°/100usft) | Turn Rate (°/100usft) |
| 12,900.0 | 87.04 | 179.42 | 9,776.6 | -3,068.9 | 1,890.5 | 3,424.6 | 0.00 | 0.00 | 0.00 |
| 12,950.0 | 87.04 | 179.42 | 9,779.2 | -3,118.8 | 1,891.0 | 3,473.3 | 0.00 | 0.00 | 0.00 |
| 13,000.0 | 87.04 | 179.42 | 9,781.8 | -3,168.7 | 1,891.5 | 3,521.9 | 0.00 | 0.00 | 0.00 |
| 13,050.0 | 87.04 | 179.42 | 9,784.3 | -3,218.7 | 1,892.0 | 3,570.6 | 0.00 | 0.00 | 0.00 |
| 13,100.0 | 87.04 | 179.42 | 9,786.9 | -3,268.6 | 1,892.5 | 3,619.3 | 0.00 | 0.00 | 0.00 |
| 13,150.0 | 87.04 | 179.42 | 9,789.5 | -3,318.5 | 1,893.0 | 3,668.0 | 0.00 | 0.00 | 0.00 |
| 13,200.0 | 87.04 | 179.42 | 9,792.1 | -3,368.5 | 1,893.5 | 3,716.6 | 0.00 | 0.00 | 0.00 |
| 13,250.0 | 87.04 | 179.42 | 9,794.7 | -3,418.4 | 1,894.0 | 3,765.3 | 0.00 | 0.00 | 0.00 |
| 13,300.0 | 87.04 | 179.42 | 9,797.2 | -3,468.3 | 1,894.5 | 3,814.0 | 0.00 | 0.00 | 0.00 |
| 13,350.0 | 87.04 | 179.42 | 9,799.8 | -3,518.2 | 1,895.0 | 3,862.7 | 0.00 | 0.00 | 0.00 |
| 13,400.0 | 87.04 | 179.42 | 9,802.4 | -3,568.2 | 1,895.5 | 3,911.3 | 0.00 | 0.00 | 0.00 |
| 13,450.0 | 87.04 | 179.42 | 9,805.0 | -3,618.1 | 1,896.0 | 3,960.0 | 0.00 | 0.00 | 0.00 |
| 13,500.0 | 87.04 | 179.42 | 9,807.5 | -3,668.0 | 1,896.5 | 4,008.7 | 0.00 | 0.00 | 0.00 |
| 13,550.0 | 87.04 | 179.42 | 9,810.1 | -3,718.0 | 1,897.0 | 4,057.4 | 0.00 | 0.00 | 0.00 |
| 13,600.0 | 87.04 | 179.42 | 9,812.7 | -3,767.9 | 1,897.5 | 4,106.1 | 0.00 | 0.00 | 0.00 |
| 13,650.0 | 87.04 | 179.42 | 9,815.3 | -3,817.8 | 1,898.0 | 4,154.7 | 0.00 | 0.00 | 0.00 |
| 13,700.0 | 87.04 | 179.42 | 9,817.9 | -3,867.8 | 1,898.5 | 4,203.4 | 0.00 | 0.00 | 0.00 |
| 13,750.0 | 87.04 | 179.42 | 9,820.4 | -3,917.7 | 1,899.0 | 4,252.1 | 0.00 | 0.00 | 0.00 |
| 13,800.0 | 87.04 | 179.42 | 9,823.0 | -3,967.6 | 1,899.5 | 4,300.8 | 0.00 | 0.00 | 0.00 |
| 13,850.0 | 87.04 | 179.42 | 9,825.6 | -4,017.6 | 1,900.0 | 4,349.4 | 0.00 | 0.00 | 0.00 |
| 13,900.0 | 87.04 | 179.42 | 9,828.2 | -4,067.5 | 1,900.5 | 4,398.1 | 0.00 | 0.00 | 0.00 |
| 13,950.0 | 87.04 | 179.42 | 9,830.7 | -4,117.4 | 1,901.0 | 4,446.8 | 0.00 | 0.00 | 0.00 |
| 14,000.0 | 87.04 | 179.42 | 9,833.3 | -4,167.3 | 1,901.5 | 4,495.5 | 0.00 | 0.00 | 0.00 |
| 14,050.0 | 87.04 | 179.42 | 9,835.9 | -4,217.3 | 1,902.0 | 4,544.1 | 0.00 | 0.00 | 0.00 |
| 14,086.8 | 87.04 | 179.42 | 9,837.8 | -4,254.0 | 1,902.4 | 4,579.9 | 0.00 | 0.00 | 0.00 |
| PPP3: 1322' FNL & 660' FEL (Sec 19) | | | | | | | | | |
| 14,100.0 | 87.04 | 179.42 | 9,838.5 | -4,267.2 | 1,902.5 | 4,592.8 | 0.00 | 0.00 | 0.00 |
| 14,150.0 | 87.04 | 179.42 | 9,841.1 | -4,317.1 | 1,903.0 | 4,641.5 | 0.00 | 0.00 | 0.00 |
| 14,200.0 | 87.04 | 179.42 | 9,843.6 | -4,367.1 | 1,903.5 | 4,690.2 | 0.00 | 0.00 | 0.00 |
| 14,250.0 | 87.04 | 179.42 | 9,846.2 | -4,417.0 | 1,904.0 | 4,738.9 | 0.00 | 0.00 | 0.00 |
| 14,300.0 | 87.04 | 179.42 | 9,848.8 | -4,466.9 | 1,904.5 | 4,787.5 | 0.00 | 0.00 | 0.00 |
| 14,350.0 | 87.04 | 179.42 | 9,851.4 | -4,516.9 | 1,905.0 | 4,836.2 | 0.00 | 0.00 | 0.00 |
| 14,400.0 | 87.04 | 179.42 | 9,854.0 | -4,566.8 | 1,905.5 | 4,884.9 | 0.00 | 0.00 | 0.00 |
| 14,450.0 | 87.04 | 179.42 | 9,856.5 | -4,616.7 | 1,906.0 | 4,933.6 | 0.00 | 0.00 | 0.00 |
| 14,500.0 | 87.04 | 179.42 | 9,859.1 | -4,666.7 | 1,906.5 | 4,982.2 | 0.00 | 0.00 | 0.00 |
| 14,550.0 | 87.04 | 179.42 | 9,861.7 | -4,716.6 | 1,907.0 | 5,030.9 | 0.00 | 0.00 | 0.00 |
| 14,600.0 | 87.04 | 179.42 | 9,864.3 | -4,766.5 | 1,907.5 | 5,079.6 | 0.00 | 0.00 | 0.00 |
| 14,650.0 | 87.04 | 179.42 | 9,866.8 | -4,816.5 | 1,908.1 | 5,128.3 | 0.00 | 0.00 | 0.00 |
| 14,700.0 | 87.04 | 179.42 | 9,869.4 | -4,866.4 | 1,908.6 | 5,176.9 | 0.00 | 0.00 | 0.00 |
| 14,750.0 | 87.04 | 179.42 | 9,872.0 | -4,916.3 | 1,909.1 | 5,225.6 | 0.00 | 0.00 | 0.00 |
| 14,800.0 | 87.04 | 179.42 | 9,874.6 | -4,966.2 | 1,909.6 | 5,274.3 | 0.00 | 0.00 | 0.00 |
| 14,850.0 | 87.04 | 179.42 | 9,877.2 | -5,016.2 | 1,910.1 | 5,323.0 | 0.00 | 0.00 | 0.00 |
| 14,900.0 | 87.04 | 179.42 | 9,879.7 | -5,066.1 | 1,910.6 | 5,371.6 | 0.00 | 0.00 | 0.00 |
| 14,950.0 | 87.04 | 179.42 | 9,882.3 | -5,116.0 | 1,911.1 | 5,420.3 | 0.00 | 0.00 | 0.00 |
| 15,000.0 | 87.04 | 179.42 | 9,884.9 | -5,166.0 | 1,911.6 | 5,469.0 | 0.00 | 0.00 | 0.00 |
| 15,050.0 | 87.04 | 179.42 | 9,887.5 | -5,215.9 | 1,912.1 | 5,517.7 | 0.00 | 0.00 | 0.00 |
| 15,100.0 | 87.04 | 179.42 | 9,890.0 | -5,265.8 | 1,912.6 | 5,566.4 | 0.00 | 0.00 | 0.00 |
| 15,150.0 | 87.04 | 179.42 | 9,892.6 | -5,315.8 | 1,913.1 | 5,615.0 | 0.00 | 0.00 | 0.00 |
| 15,200.0 | 87.04 | 179.42 | 9,895.2 | -5,365.7 | 1,913.6 | 5,663.7 | 0.00 | 0.00 | 0.00 |
| 15,250.0 | 87.04 | 179.42 | 9,897.8 | -5,415.6 | 1,914.1 | 5,712.4 | 0.00 | 0.00 | 0.00 |
| 15,300.0 | 87.04 | 179.42 | 9,900.4 | -5,465.6 | 1,914.6 | 5,761.1 | 0.00 | 0.00 | 0.00 |
| 15,350.0 | 87.04 | 179.42 | 9,902.9 | -5,515.5 | 1,915.1 | 5,809.7 | 0.00 | 0.00 | 0.00 |
| 15,400.0 | 87.04 | 179.42 | 9,905.5 | -5,565.4 | 1,915.6 | 5,858.4 | 0.00 | 0.00 | 0.00 |
| 15,409.8 | 87.04 | 179.42 | 9,906.0 | -5,575.2 | 1,915.7 | 5,868.0 | 0.00 | 0.00 | 0.00 |

Planning Report

| | | | |
|------------------|-----------------------------------|-------------------------------------|--|
| Database: | Hobbs | Local Co-ordinate Reference: | Site Macho Man 18/19 Fed Com #528H |
| Company: | Mewbourne Oil Company | TVD Reference: | WELL @ 4107.0usft (Original Well Elev) |
| Project: | Lea County, New Mexico NAD 83 | MD Reference: | WELL @ 4107.0usft (Original Well Elev) |
| Site: | Macho Man 18/19 Fed Com #528H | North Reference: | Grid |
| Well: | Sec 18, T18S, R34E | Survey Calculation Method: | Minimum Curvature |
| Wellbore: | BHL: 100' FSL & 660' FEL (Sec 19) | | |
| Design: | Design #1 | | |

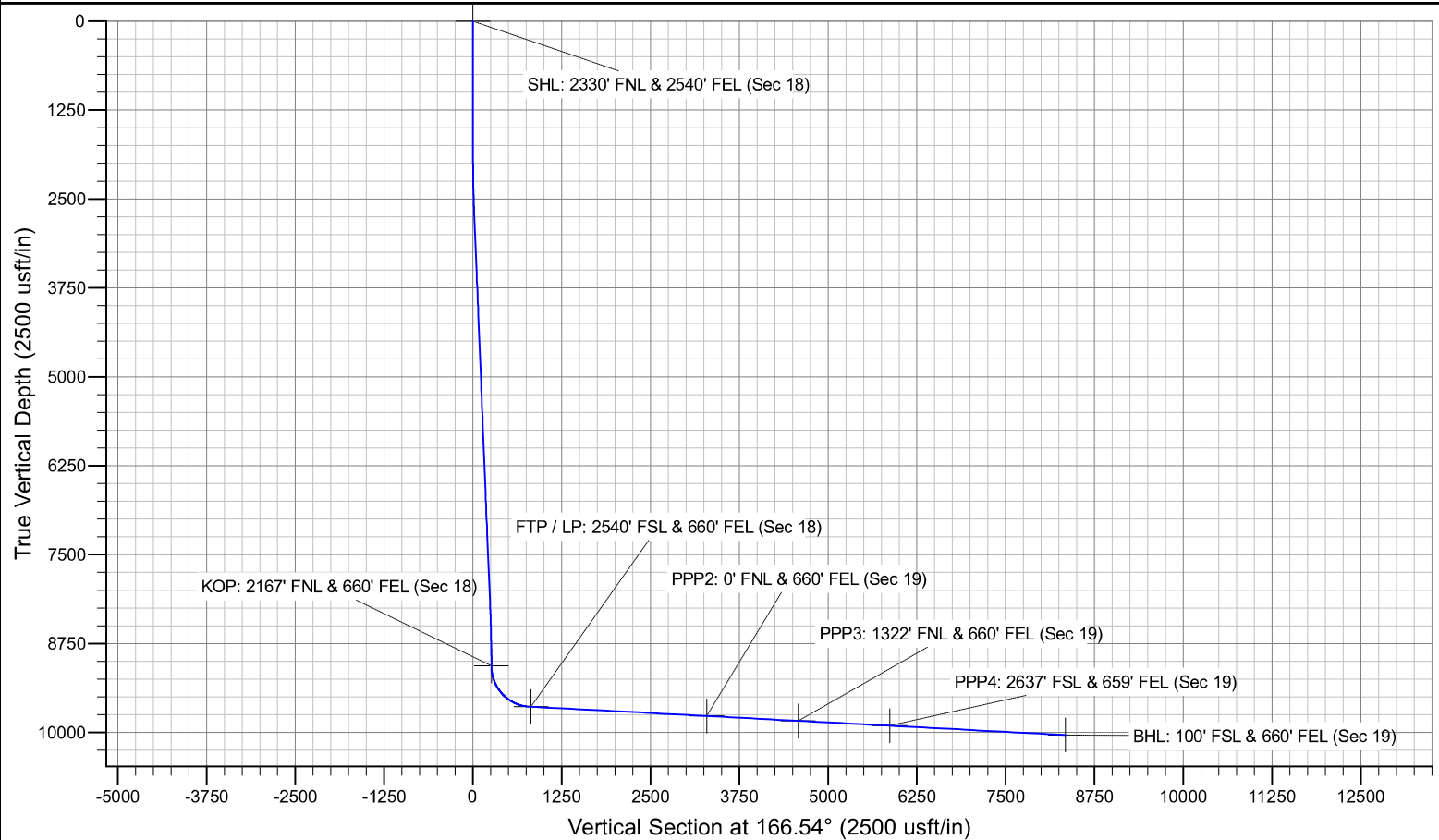
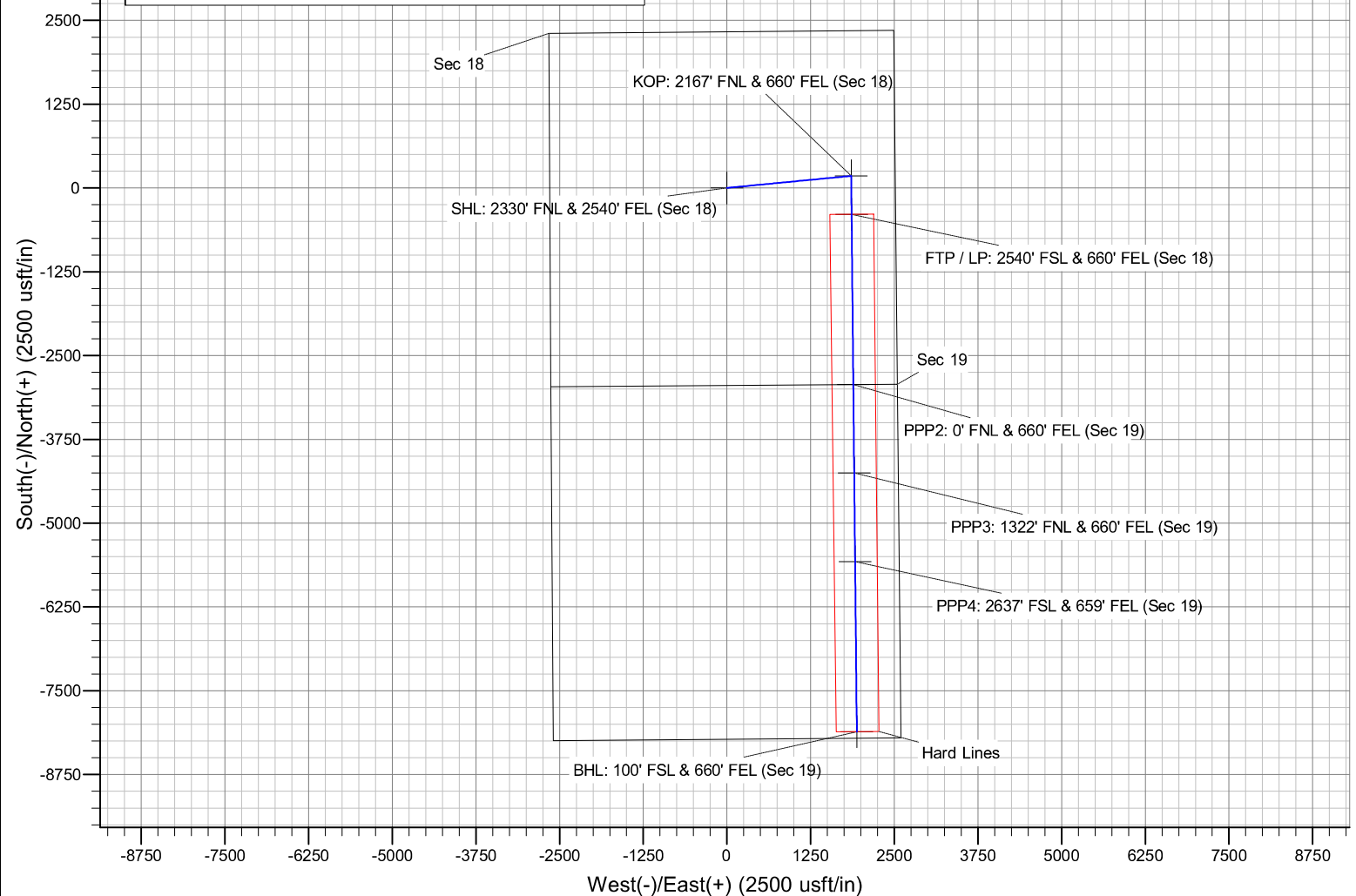
| Planned Survey | | | | | | | | | |
|-------------------------------------|-----------------|-------------|-----------------------|--------------|--------------|-------------------------|-------------------------|------------------------|-----------------------|
| Measured Depth (usft) | Inclination (°) | Azimuth (°) | Vertical Depth (usft) | +N/-S (usft) | +E/-W (usft) | Vertical Section (usft) | Dogleg Rate (°/100usft) | Build Rate (°/100usft) | Turn Rate (°/100usft) |
| PPP4: 2637' FSL & 659' FEL (Sec 19) | | | | | | | | | |
| 15,450.0 | 87.04 | 179.42 | 9,908.1 | -5,615.3 | 1,916.1 | 5,907.1 | 0.00 | 0.00 | 0.00 |
| 15,500.0 | 87.04 | 179.42 | 9,910.7 | -5,665.3 | 1,916.6 | 5,955.8 | 0.00 | 0.00 | 0.00 |
| 15,550.0 | 87.04 | 179.42 | 9,913.3 | -5,715.2 | 1,917.1 | 6,004.4 | 0.00 | 0.00 | 0.00 |
| 15,600.0 | 87.04 | 179.42 | 9,915.8 | -5,765.1 | 1,917.6 | 6,053.1 | 0.00 | 0.00 | 0.00 |
| 15,650.0 | 87.04 | 179.42 | 9,918.4 | -5,815.1 | 1,918.1 | 6,101.8 | 0.00 | 0.00 | 0.00 |
| 15,700.0 | 87.04 | 179.42 | 9,921.0 | -5,865.0 | 1,918.6 | 6,150.5 | 0.00 | 0.00 | 0.00 |
| 15,750.0 | 87.04 | 179.42 | 9,923.6 | -5,914.9 | 1,919.1 | 6,199.2 | 0.00 | 0.00 | 0.00 |
| 15,800.0 | 87.04 | 179.42 | 9,926.1 | -5,964.9 | 1,919.6 | 6,247.8 | 0.00 | 0.00 | 0.00 |
| 15,850.0 | 87.04 | 179.42 | 9,928.7 | -6,014.8 | 1,920.1 | 6,296.5 | 0.00 | 0.00 | 0.00 |
| 15,900.0 | 87.04 | 179.42 | 9,931.3 | -6,064.7 | 1,920.6 | 6,345.2 | 0.00 | 0.00 | 0.00 |
| 15,950.0 | 87.04 | 179.42 | 9,933.9 | -6,114.7 | 1,921.1 | 6,393.9 | 0.00 | 0.00 | 0.00 |
| 16,000.0 | 87.04 | 179.42 | 9,936.5 | -6,164.6 | 1,921.6 | 6,442.5 | 0.00 | 0.00 | 0.00 |
| 16,050.0 | 87.04 | 179.42 | 9,939.0 | -6,214.5 | 1,922.1 | 6,491.2 | 0.00 | 0.00 | 0.00 |
| 16,100.0 | 87.04 | 179.42 | 9,941.6 | -6,264.4 | 1,922.6 | 6,539.9 | 0.00 | 0.00 | 0.00 |
| 16,150.0 | 87.04 | 179.42 | 9,944.2 | -6,314.4 | 1,923.1 | 6,588.6 | 0.00 | 0.00 | 0.00 |
| 16,200.0 | 87.04 | 179.42 | 9,946.8 | -6,364.3 | 1,923.6 | 6,637.2 | 0.00 | 0.00 | 0.00 |
| 16,250.0 | 87.04 | 179.42 | 9,949.3 | -6,414.2 | 1,924.1 | 6,685.9 | 0.00 | 0.00 | 0.00 |
| 16,300.0 | 87.04 | 179.42 | 9,951.9 | -6,464.2 | 1,924.6 | 6,734.6 | 0.00 | 0.00 | 0.00 |
| 16,350.0 | 87.04 | 179.42 | 9,954.5 | -6,514.1 | 1,925.1 | 6,783.3 | 0.00 | 0.00 | 0.00 |
| 16,400.0 | 87.04 | 179.42 | 9,957.1 | -6,564.0 | 1,925.6 | 6,832.0 | 0.00 | 0.00 | 0.00 |
| 16,450.0 | 87.04 | 179.42 | 9,959.7 | -6,614.0 | 1,926.1 | 6,880.6 | 0.00 | 0.00 | 0.00 |
| 16,500.0 | 87.04 | 179.42 | 9,962.2 | -6,663.9 | 1,926.6 | 6,929.3 | 0.00 | 0.00 | 0.00 |
| 16,550.0 | 87.04 | 179.42 | 9,964.8 | -6,713.8 | 1,927.1 | 6,978.0 | 0.00 | 0.00 | 0.00 |
| 16,600.0 | 87.04 | 179.42 | 9,967.4 | -6,763.8 | 1,927.6 | 7,026.7 | 0.00 | 0.00 | 0.00 |
| 16,650.0 | 87.04 | 179.42 | 9,970.0 | -6,813.7 | 1,928.1 | 7,075.3 | 0.00 | 0.00 | 0.00 |
| 16,700.0 | 87.04 | 179.42 | 9,972.6 | -6,863.6 | 1,928.6 | 7,124.0 | 0.00 | 0.00 | 0.00 |
| 16,750.0 | 87.04 | 179.42 | 9,975.1 | -6,913.6 | 1,929.1 | 7,172.7 | 0.00 | 0.00 | 0.00 |
| 16,800.0 | 87.04 | 179.42 | 9,977.7 | -6,963.5 | 1,929.6 | 7,221.4 | 0.00 | 0.00 | 0.00 |
| 16,850.0 | 87.04 | 179.42 | 9,980.3 | -7,013.4 | 1,930.2 | 7,270.0 | 0.00 | 0.00 | 0.00 |
| 16,900.0 | 87.04 | 179.42 | 9,982.9 | -7,063.3 | 1,930.7 | 7,318.7 | 0.00 | 0.00 | 0.00 |
| 16,950.0 | 87.04 | 179.42 | 9,985.4 | -7,113.3 | 1,931.2 | 7,367.4 | 0.00 | 0.00 | 0.00 |
| 17,000.0 | 87.04 | 179.42 | 9,988.0 | -7,163.2 | 1,931.7 | 7,416.1 | 0.00 | 0.00 | 0.00 |
| 17,050.0 | 87.04 | 179.42 | 9,990.6 | -7,213.1 | 1,932.2 | 7,464.7 | 0.00 | 0.00 | 0.00 |
| 17,100.0 | 87.04 | 179.42 | 9,993.2 | -7,263.1 | 1,932.7 | 7,513.4 | 0.00 | 0.00 | 0.00 |
| 17,150.0 | 87.04 | 179.42 | 9,995.8 | -7,313.0 | 1,933.2 | 7,562.1 | 0.00 | 0.00 | 0.00 |
| 17,200.0 | 87.04 | 179.42 | 9,998.3 | -7,362.9 | 1,933.7 | 7,610.8 | 0.00 | 0.00 | 0.00 |
| 17,250.0 | 87.04 | 179.42 | 10,000.9 | -7,412.9 | 1,934.2 | 7,659.5 | 0.00 | 0.00 | 0.00 |
| 17,300.0 | 87.04 | 179.42 | 10,003.5 | -7,462.8 | 1,934.7 | 7,708.1 | 0.00 | 0.00 | 0.00 |
| 17,350.0 | 87.04 | 179.42 | 10,006.1 | -7,512.7 | 1,935.2 | 7,756.8 | 0.00 | 0.00 | 0.00 |
| 17,400.0 | 87.04 | 179.42 | 10,008.6 | -7,562.7 | 1,935.7 | 7,805.5 | 0.00 | 0.00 | 0.00 |
| 17,450.0 | 87.04 | 179.42 | 10,011.2 | -7,612.6 | 1,936.2 | 7,854.2 | 0.00 | 0.00 | 0.00 |
| 17,500.0 | 87.04 | 179.42 | 10,013.8 | -7,662.5 | 1,936.7 | 7,902.8 | 0.00 | 0.00 | 0.00 |
| 17,550.0 | 87.04 | 179.42 | 10,016.4 | -7,712.4 | 1,937.2 | 7,951.5 | 0.00 | 0.00 | 0.00 |
| 17,600.0 | 87.04 | 179.42 | 10,019.0 | -7,762.4 | 1,937.7 | 8,000.2 | 0.00 | 0.00 | 0.00 |
| 17,650.0 | 87.04 | 179.42 | 10,021.5 | -7,812.3 | 1,938.2 | 8,048.9 | 0.00 | 0.00 | 0.00 |
| 17,700.0 | 87.04 | 179.42 | 10,024.1 | -7,862.2 | 1,938.7 | 8,097.5 | 0.00 | 0.00 | 0.00 |
| 17,750.0 | 87.04 | 179.42 | 10,026.7 | -7,912.2 | 1,939.2 | 8,146.2 | 0.00 | 0.00 | 0.00 |
| 17,800.0 | 87.04 | 179.42 | 10,029.3 | -7,962.1 | 1,939.7 | 8,194.9 | 0.00 | 0.00 | 0.00 |
| 17,850.0 | 87.04 | 179.42 | 10,031.9 | -8,012.0 | 1,940.2 | 8,243.6 | 0.00 | 0.00 | 0.00 |
| 17,900.0 | 87.04 | 179.42 | 10,034.4 | -8,062.0 | 1,940.7 | 8,292.3 | 0.00 | 0.00 | 0.00 |
| 17,949.8 | 87.04 | 179.42 | 10,037.0 | -8,111.7 | 1,941.2 | 8,340.7 | 0.00 | 0.00 | 0.00 |
| BHL: 100' FSL & 660' FEL (Sec 19) | | | | | | | | | |

Planning Report

| | | | |
|-----------|-----------------------------------|------------------------------|--|
| Database: | Hobbs | Local Co-ordinate Reference: | Site Macho Man 18/19 Fed Com #528H |
| Company: | Mewbourne Oil Company | TVD Reference: | WELL @ 4107.0usft (Original Well Elev) |
| Project: | Lea County, New Mexico NAD 83 | MD Reference: | WELL @ 4107.0usft (Original Well Elev) |
| Site: | Macho Man 18/19 Fed Com #528H | North Reference: | Grid |
| Well: | Sec 18, T18S, R34E | Survey Calculation Method: | Minimum Curvature |
| Wellbore: | BHL: 100' FSL & 660' FEL (Sec 19) | | |
| Design: | Design #1 | | |

| Design Targets | | | | | | | | | |
|---|-----------|----------|----------|----------|---------|------------|------------|------------|--------------|
| Target Name | | | | | | | | | |
| - hit/miss target | Dip Angle | Dip Dir. | TVD | +N/-S | +E/-W | Northing | Easting | Latitude | Longitude |
| - Shape | (°) | (°) | (usft) | (usft) | (usft) | (usft) | (usft) | | |
| SHL: 2330' FNL & 2540' - plan hits target center - Point | 0.00 | 0.00 | 0.0 | 0.0 | 0.0 | 636,847.20 | 766,990.90 | 32.7485804 | -103.5993737 |
| KOP: 2167' FNL & 660' I - plan hits target center - Point | 0.00 | 0.00 | 9,064.0 | 178.9 | 1,857.8 | 637,026.10 | 768,848.70 | 32.7490366 | -103.5933274 |
| FTP / LP: 2540' FSL & 6 - plan misses target center by 1.5usft at 10221.3usft MD (9638.5 TVD, -393.8 N, 1863.6 E) - Point | 0.00 | 0.00 | 9,637.0 | -393.9 | 1,863.9 | 636,453.30 | 768,854.80 | 32.7474621 | -103.5933206 |
| PPP2: 0' FNL & 660' FEI - plan hits target center - Point | 0.00 | 0.00 | 9,769.6 | -2,932.8 | 1,889.1 | 633,914.40 | 768,880.00 | 32.7404836 | -103.5932963 |
| PPP3: 1322' FNL & 660' - plan hits target center - Point | 0.00 | 0.00 | 9,837.8 | -4,254.0 | 1,902.4 | 632,593.20 | 768,893.29 | 32.7368521 | -103.5932831 |
| PPP4: 2637' FSL & 659' - plan hits target center - Point | 0.00 | 0.00 | 9,906.0 | -5,575.2 | 1,915.7 | 631,272.00 | 768,906.58 | 32.7332206 | -103.5932699 |
| BHL: 100' FSL & 660' FE - plan hits target center - Point | 0.00 | 0.00 | 10,037.0 | -8,111.7 | 1,941.2 | 628,735.50 | 768,932.10 | 32.7262487 | -103.5932445 |

Machno Man 18/19 Fed Com #528H



Mewbourne Oil Company, Macho Man 18/19 Fed Com 528H

Sec 18, T18S, R34E

SHL: 2330' FNL 2540' FEL (Sec 18)

BHL: 100' FSL 660' FEL (Sec 19)

| | | |
|-----------------------|-------------------------|-------------|
| Operator Name: | Property Name: | Well Number |
| Mewbourne Oil Company | Macho Man 18/19 Fed Com | 528H |

Kick Off Point (KOP)

| | | | | | | | | | |
|------------|---------|----------|-------|-----|--------------|----------|------|----------|--------|
| UL | Section | Township | Range | Lot | Feet | From N/S | Feet | From E/W | County |
| H | 18 | 18 | 34 | - | 2167' | FNL | 660' | FEL | Lea |
| Latitude | | | | | Longitude | | | NAD | |
| 32.7490366 | | | | | -103.5933275 | | | 83 | |

First Take Point (FTP)

| | | | | | | | | | |
|-----------|---------|----------|-------|-----|--------------|----------|------|----------|--------|
| UL | Section | Township | Range | Lot | Feet | From N/S | Feet | From E/W | County |
| H | 18 | 18S | 34 | - | 2540' | FSL | 660' | FEL | Lea |
| Latitude | | | | | Longitude | | | NAD | |
| 32.747462 | | | | | -103.5933207 | | | 83 | |

Last Take Point (LTP)

| | | | | | | | | | |
|------------|---------|----------|-------|-----|--------------|----------|------|----------|--------|
| UL | Section | Township | Range | Lot | Feet | From N/S | Feet | From E/W | County |
| P | 19 | 18S | 34 | - | 100' | FSL | 660' | FEL | Lea |
| Latitude | | | | | Longitude | | | NAD | |
| 32.7262485 | | | | | -103.5932446 | | | 83 | |

Is this well the defining well for the Horizontal Spacing Unit?

Y

Is this well an infill well?

N

If infill is yes please provide API if available, Operator Name and well number for Defining well for Horizontal Spacing Unit.

| |
|-------|
| API # |
| |

| | | |
|----------------|----------------|-------------|
| Operator Name: | Property Name: | Well Number |
| | | |

PECOS DISTRICT DRILLING CONDITIONS OF APPROVAL

| | |
|-----------------------------|-----------------------------------|
| OPERATOR'S NAME: | MEWBOURNE OIL COMPANY |
| WELL NAME & NO.: | MACHO MAN 18/19 FED COM 528H |
| APD ID: | 10400101648 |
| LOCATION: | Section 18, T.18 S., R.34 E. NMP. |
| COUNTY: | Lea County, New Mexico ▼ |

COA

| H ₂ S | <input type="radio"/> No <input checked="" type="radio"/> Yes | | | |
|---------------------|--|---|---|--|
| Potash / WIPP | <input checked="" type="radio"/> None | <input type="radio"/> Secretary | <input type="radio"/> R-111-Q | <input type="checkbox"/> Open Annulus <input type="checkbox"/> WIPP |
| Cave / Karst | <input checked="" type="radio"/> Low | <input type="radio"/> Medium | <input type="radio"/> High | <input type="radio"/> Critical |
| Wellhead | <input type="radio"/> Conventional | <input checked="" type="radio"/> Multibowl | <input type="radio"/> Both | <input type="radio"/> Diverter |
| Cementing | <input type="checkbox"/> Primary Squeeze | <input type="checkbox"/> Cont. Squeeze | <input type="checkbox"/> EchoMeter | <input type="checkbox"/> DV Tool |
| Special Req | <input type="checkbox"/> Capitan Reef | <input type="checkbox"/> Water Disposal | <input checked="" type="checkbox"/> COM | <input type="checkbox"/> Unit |
| Waste Prev. | <input type="radio"/> Self-Certification | <input checked="" type="radio"/> Waste Min. Plan | <input type="radio"/> APD Submitted prior to 06/10/2024 | |
| Additional Language | <input checked="" type="checkbox"/> Flex Hose | <input type="checkbox"/> Casing Clearance | <input type="checkbox"/> Pilot Hole | <input checked="" type="checkbox"/> Break Testing |
| | <input type="checkbox"/> Four-String | <input checked="" type="checkbox"/> Offline Cementing | <input checked="" type="checkbox"/> Fluid-Filled | |

A. HYDROGEN SULFIDE

A Hydrogen Sulfide (H₂S) Drilling Plan shall be activated **AT SPUD**. As a result, the Hydrogen Sulfide area must meet **43 CFR 3176** requirements, which includes equipment and personnel/public protection items. If Hydrogen Sulfide is encountered, please provide measured values and formations to the BLM.

B. CASING DESIGN

Primary Casing Program

1. The **13-3/8** inch surface casing shall be set at approximately **1,880 ft.** (a minimum of **25 feet (Lea County)** into the Rustler Anhydrite and above the salt) and cemented to the surface. **If salt is encountered, set casing at least 25 ft. above the salt.**
 - a. If cement does not circulate to the surface, the appropriate BLM office shall be notified and a temperature survey utilizing an electronic-type temperature survey with surface log readout will be used or a cement bond log shall be run to verify the top of the cement. Temperature survey will be run a minimum of six hours after pumping cement and ideally between 8-10 hours after completing the cement job.
 - b. Wait on cement (WOC) time for a primary cement job will be a minimum of **8**

- hours** or **500 psi compressive strength**, whichever is greater. (This is to include the lead cement)
- c. Wait on cement (WOC) time for a remedial job will be a minimum of 4 hours after bringing cement to surface or 500 psi compressive strength, whichever is greater.
 - d. If cement falls back, remedial cementing will be done prior to drilling out that string.
2. The **9-5/8 inch** intermediate casing shall be set in a competent bed at approximately **3,300 ft.** The minimum required fill of cement behind the **9-5/8 inch** intermediate casing is:
- **Cement to surface.** If cement does not circulate see B.1.a, c-d above.
- Note:** Excess cement is less than 25%, more cement is required if washout occurs. Adjust cement volume and excess based on a fluid caliper or similar method that reflects the as-drilled size of the wellbore.
- Note:** The intermediate casing must be kept fluid-filled to meet BLM's minimum requirement for collapse design SF.
3. Operator has proposed to set **7 inch** production casing at approximately **9,321 ft.** (9,064 ft. TVD). The minimum required fill of cement behind the **7 inch** production casing is:
- Cement should tie-back **at least 200 feet** into previous casing string. Operator shall provide method of verification.
4. The minimum required fill of cement behind the **4-1/2 in.** production liner is:
- Cement should tie-back **at least 100 feet** into previous casing string. Operator shall provide method of verification.

Alternate Casing Program

1. The **13-3/8 inch** surface casing shall be set at approximately **1,880 ft.** (a minimum of **25 feet (Lea County)** into the Rustler Anhydrite and above the salt) and cemented to the surface. **If salt is encountered, set casing at least 25 ft. above the salt.**
 - a. If cement does not circulate to the surface, the appropriate BLM office shall be notified and a temperature survey utilizing an electronic-type temperature survey with surface log readout will be used or a cement bond log shall be run to verify the top of the cement. Temperature survey will be run a minimum of six hours after pumping cement and ideally between 8-10 hours after completing the cement job.
 - b. Wait on cement (WOC) time for a primary cement job will be a minimum of **8 hours** or **500 psi compressive strength**, whichever is greater. (This is to include the lead cement)
 - c. Wait on cement (WOC) time for a remedial job will be a minimum of 4 hours

after bringing cement to surface or 500 psi compressive strength, whichever is greater.

- d. If cement falls back, remedial cementing will be done prior to drilling out that string.
2. The **9-5/8** inch intermediate casing shall be set in a competent bed at approximately **3,300 ft.** The minimum required fill of cement behind the **9-5/8** inch intermediate casing is:

- **Cement to surface.** If cement does not circulate see B.1.a, c-d above.

Note: Excess cement is less than 25%, more cement is required if washout occurs. Adjust cement volume and excess based on a fluid caliper or similar method that reflects the as-drilled size of the wellbore.

Note: The intermediate casing must be kept fluid-filled to meet BLM's minimum requirement for collapse design SF.

3. Operator has proposed to set **7 inch** production casing at approximately **10,221 ft.** (9,637 ft. TVD). The minimum required fill of cement behind the **7 inch** production casing is:
 - Cement should tie-back **at least 200 feet** into previous casing string. Operator shall provide method of verification.
4. The minimum required fill of cement behind the **4-1/2 in.** production liner is:
 - Cement should tie-back **at least 100 feet** into previous casing string. Operator shall provide method of verification.

Offline Cementing

Operator has been (**Approved**) to pump the proposed cement program offline in the **Surface and intermediate(s) intervals.** Offline cementing should commence within 24 hours of landing the casing for the interval. Notify the BLM 4hrs prior to the commencement of any offline cementing procedure at **Lea County: 575-689-5981.**

C. PRESSURE CONTROL

1. Variance approved to use flex line from BOP to choke manifold. Manufacturer's specification to be readily available. No external damage to flex line. Flex line to be installed as straight as possible (no hard bends).
2. Operator has proposed a multi-bowl wellhead assembly. Minimum working pressure of the blowout preventer (BOP) and related equipment (BOPE) required for drilling below the surface casing shoe shall be **5000 (5M) psi.** BOP and BOPE shall be tested in accordance with title **43 CFR 3172.**

- i. Wellhead shall be installed by manufacturer's representatives, submit documentation with subsequent sundry.
- ii. If the welding is performed by a third party, the manufacturer's representative shall monitor the temperature to verify that it does not exceed the maximum temperature of the seal.
- iii. Manufacturer representative shall install the test plug for the initial BOP test.
- iv. If the cement does not circulate and one-inch operations would have been possible with a standard wellhead, the well head shall be cut off, cementing operations performed and another wellhead installed.
- v. Whenever any seal subject to test pressure is broken, all the tests in 43 CFR 3172 must be followed.

BOPE Break Testing Variance (Utilizing a 10M BOPE system)

- BOPE Break Testing is ONLY permitted for intervals utilizing a 5M BOPE or less. **(Annular preventer must be tested to a minimum of 70% of BOPE working pressure and shall be higher than the MASP.)**
- BOPE Break Testing is NOT permitted to drilling the production hole section.
- Variance only pertains to the intermediate hole-sections and no deeper than the Bone Springs formation.
- While in transfer between wells, the BOPE shall be secured by the hydraulic carrier or cradle.
- Any well control event while drilling require notification to the BLM Petroleum Engineer **(575-706-2779)** prior to the commencement of any BOPE Break Testing operations.
- A full BOPE test is required prior to drilling the first deep intermediate hole section. If any subsequent hole interval is deeper than the first, a full BOPE test will be required. (200' TVD tolerance between intermediate shoes is allowable).
- The BLM is to be contacted **(575-689-5981 Lea County)** 4 hours prior to BOPE tests.
- As a minimum, a full BOPE test shall be performed at 21-day intervals.
- In the event any repairs or replacement of the BOPE is required, the BOPE shall test as per **43 CFR 3172**.
- If in the event break testing is not utilized, then a full BOPE test would be conducted.

D. SPECIAL REQUIREMENT (S)**Communitization Agreement**

- The operator will submit a Communitization Agreement to the Santa Fe Office, 301 Dinosaur Trail Santa Fe, New Mexico 87508, at least 90 days before the anticipated date of first production from a well subject to a spacing order issued by the New Mexico Oil Conservation Division. The Communitization Agreement will include the signatures of all working interest owners in all Federal and Indian leases subject to the Communitization Agreement (i.e., operating rights owners and lessees of record), or certification that the operator has obtained the written signatures of all such owners and will make those signatures available to the BLM immediately upon request.
- If the operator does not comply with this condition of approval, the BLM may take enforcement actions that include, but are not limited to, those specified in 43 CFR 3163.1.
- In addition, the well sign shall include the surface and bottom hole lease numbers. When the Communitization Agreement number is known, it shall also be on the sign.

GENERAL REQUIREMENTS

The BLM is to be notified in advance for a representative to witness:

- a. Spudding well (minimum of 24 hours)
- b. Setting and/or Cementing of all casing strings (minimum of 4 hours)
- c. BOPE tests (minimum of 4 hours)

Contact Lea County Petroleum Engineering Inspection Staff:

Call the Hobbs Field Station, 414 West Taylor, Hobbs NM 88240, (575) 689-5981.

1. Unless the production casing has been run and cemented or the well has been properly plugged, the drilling rig shall not be removed from over the hole without prior approval.
 - a. In the event the operator has proposed to drill multiple wells utilizing a skid/walking rig. Operator shall secure the wellbore on the current well, after installing and testing the wellhead, by installing a blind flange of like pressure rating to the wellhead and a pressure gauge that can be monitored while drilling is performed on the other well(s).
 - b. When the operator proposes to set surface casing with Spudder Rig
 - i. Notify the BLM when moving in and removing the Spudder Rig.
 - ii. Notify the BLM when moving in the 2nd Rig. Rig to be moved in within 90 days of notification that Spudder Rig has left the location.
 - iii. BOP/BOPE test to be conducted per **43 CFR 3172** as soon as 2nd Rig is rigged up on well.
2. Floor controls are required for 3M or Greater systems. These controls will be on the rig floor, unobstructed, readily accessible to the driller and will be operational at all

times during drilling and/or completion activities. Rig floor is defined as the area immediately around the rotary table; the area immediately above the substructure on which the draw works are located, this does not include the doghouse or stairway area.

3. For intervals in which cement to surface is required, cement to surface should be verified with a visual check and density or pH check to differentiate cement from spacer and drilling mud. The results should be documented in the driller's log and daily reports.

A. CASING

1. Changes to the approved APD casing program need prior approval if the items substituted are of lesser grade or different casing size or are Non-API. The Operator can exchange the components of the proposal with that of superior strength (i.e. changing from J-55 to N-80, or from 36# to 40#). Changes to the approved cement program need prior approval if the altered cement plan has less volume or strength or if the changes are substantial (i.e. Multistage tool, ECP, etc.). The initial wellhead installed on the well will remain on the well with spools used as needed.
2. Wait on cement (WOC) for Potash Areas: After cementing but before commencing any tests, the casing string shall stand cemented under pressure until both of the following conditions have been met: 1) cement reaches a minimum compressive strength of 500 psi for all cement blends of both lead and tail cement, 2) until cement has been in place at least 8 hours. WOC time will be recorded in the driller's log. The casing integrity test can be done (prior to the cement setting up) immediately after bumping the plug.
3. Wait on cement (WOC) for Water Basin: After cementing but before commencing any tests, the casing string shall stand cemented under pressure until both of the following conditions have been met: 1) cement reaches a minimum compressive strength of 500 psi at the shoe, 2) until cement has been in place at least 8 hours. WOC time will be recorded in the driller's log. See individual casing strings for details regarding lead cement slurry requirements. The casing integrity test can be done (prior to the cement setting up) immediately after bumping the plug.
4. Provide compressive strengths including hours to reach required 500 pounds compressive strength prior to cementing each casing string. Have well specific cement details onsite prior to pumping the cement for each casing string.
5. No pea gravel permitted for remedial or fall back remedial without prior authorization from the BLM engineer.
6. On that portion of any well approved for a 5M BOPE system or greater, a pressure integrity test of each casing shoe shall be performed. Formation at the shoe shall be tested to a minimum of the mud weight equivalent anticipated to control the formation pressure to the next casing depth or at total depth of the well. This test shall be performed before drilling more than 20 feet of new hole.

7. If hardband drill pipe is rotated inside casing, returns will be monitored for metal. If metal is found in samples, drill pipe will be pulled and rubber protectors which have a larger diameter than the tool joints of the drill pipe will be installed prior to continuing drilling operations.
8. Whenever a casing string is cemented in the R-111-Q potash area, the NMOCD requirements shall be followed.

B. PRESSURE CONTROL

1. All blowout preventer (BOP) and related equipment (BOPE) shall comply with well control requirements as described in **43 CFR 3172**.
2. If a variance is approved for a flexible hose to be installed from the BOP to the choke manifold, the following requirements apply: The flex line must meet the requirements of API 16C. Check condition of flexible line from BOP to choke manifold, replace if exterior is damaged or if line fails test. Line to be as straight as possible with no hard bends and is to be anchored according to Manufacturer's requirements. The flexible hose can be exchanged with a hose of equal size and equal or greater pressure rating. Anchor requirements, specification sheet and hydrostatic pressure test certification matching the hose in service, to be onsite for review. These documents shall be posted in the company man's trailer and on the rig floor.
3. 5M or higher system requires an HCR valve, remote kill line and annular to match. The remote kill line is to be installed prior to testing the system and tested to stack pressure.
4. If the operator has proposed a multi-bowl wellhead assembly in the APD. The following requirements must be met:
 - i. Wellhead shall be installed by manufacturer's representatives, submit documentation with subsequent sundry.
 - ii. If the welding is performed by a third party, the manufacturer's representative shall monitor the temperature to verify that it does not exceed the maximum temperature of the seal.
 - iii. Manufacturer representative shall install the test plug for the initial BOP test.
 - iv. Whenever any seal subject to test pressure is broken, all the tests in 43 CFR 3172.6(b)(9) must be followed.
 - v. If the cement does not circulate and one-inch operations would have been possible with a standard wellhead, the well head shall be cut off, cementing operations performed and another wellhead installed.
5. The appropriate BLM office shall be notified a minimum of 4 hours in advance for a representative to witness the tests.
 - i. In a water basin, for all casing strings utilizing slips, these are to be set as soon as the crew and rig are ready and any fallback cement remediation has been

done. The casing cut-off and BOP installation can be initiated four hours after installing the slips, which will be approximately six hours after bumping the plug. For those casing strings not using slips, the minimum wait time before cut-off is eight hours after bumping the plug. BOP/BOPE testing can begin after cut-off or once cement reaches 500 psi compressive strength (including lead cement), whichever is greater. However, if the float does not hold, cut-off cannot be initiated until cement reaches 500 psi compressive strength (including lead when specified).

- ii. In potash areas, for all casing strings utilizing slips, these are to be set as soon as the crew and rig are ready and any fallback cement remediation has been done. For all casing strings, casing cut-off and BOP installation can be initiated at twelve hours after bumping the cement plug. The BOPE test can be initiated after bumping the cement plug with the casing valve open. (Only applies to single stage cement jobs, prior to the cement setting up.)
- iii. The tests shall be done by an independent service company utilizing a test plug not a cup or J-packer and can be initiated immediately with the casing valve open. The operator also has the option of utilizing an independent tester to test without a plug (i.e. against the casing) pursuant to **43 CFR 3172** with the pressure not to exceed 70% of the burst rating for the casing. Any test against the casing must meet the WOC time for 8 hours or 500 pounds compressive strength, whichever is greater, prior to initiating the test (see casing segment as lead cement may be critical item).
- iv. The test shall be run on a 5000-psi chart for a 2-3M BOP/BOP, on a 10000 psi chart for a 5M BOP/BOPE and on a 15000 psi chart for a 10M BOP/BOPE. If a linear chart is used, it shall be a one-hour chart. A circular chart shall have a maximum 2-hour clock. If a twelve hour or twenty-four-hour chart is used, tester shall make a notation that it is run with a two hour clock.
- v. The results of the test shall be reported to the appropriate BLM office.
- vi. All tests are required to be recorded on a calibrated test chart. A copy of the BOP/BOPE test chart and a copy of independent service company test will be submitted to the appropriate BLM office.
- vii. The BOP/BOPE test shall include a low-pressure test from 250 to 300 psi. The test will be held for a minimum of 10 minutes if test is done with a test plug and 30 minutes without a test plug. This test shall be performed prior to the test at full stack pressure.
- viii. BOP/BOPE must be tested by an independent service company within 500 feet of the top of the Wolfcamp formation if the time between the setting of the intermediate casing and reaching this depth exceeds 20 days. This test

does not exclude the test prior to drilling out the casing shoe as per **43 CFR 3172**.

C. DRILLING MUD

Mud system monitoring equipment, with derrick floor indicators and visual and audio alarms, shall be operating before drilling into the Wolfcamp formation, and shall be used until production casing is run and cemented.

D. WASTE MATERIAL AND FLUIDS

All waste (i.e. drilling fluids, trash, salts, chemicals, sewage, gray water, etc.) created as a result of drilling operations and completion operations shall be safely contained and disposed of properly at a waste disposal facility. No waste material or fluid shall be disposed of on the well location or surrounding area. Porto-johns and trash containers will be on-location during fracturing operations or any other crew-intensive operations.

SA 04/21/2025

Hydrogen Sulfide Drilling Operations Plan
Mewbourne Oil Company

1. General Requirements

Rule 118 does not apply to this well because MOC has researched this area and no high concentrations of H₂S were found. MOC will have on location and working all H₂S safety equipment before the Delaware formation for purposes of safety and insurance requirements.

2. Hydrogen Sulfide Training

All personnel, whether regularly assigned, contracted, or employed on an unscheduled basis, will have received training from a qualified instructor in the following areas prior to entering the drilling pad area of the well:

1. The hazards and characteristics of hydrogen sulfide gas.
2. The proper use of personal protective equipment and life support systems.
3. The proper use of hydrogen sulfide detectors, alarms, warning systems, briefing areas, evacuation procedures.
4. The proper techniques for first aid and rescue operations.

Additionally, supervisory personnel will be trained in the following areas:

- 1 The effects of hydrogen sulfide on metal components. If high tensile tubular systems are utilized, supervisory personnel will be trained in their special maintenance requirements.
- 2 Corrective action and shut in procedures, blowout prevention, and well control procedures while drilling a well.
- 3 The contents of the Hydrogen Sulfide Drilling Operations Plan.

There will be an initial training session prior to encountering a known hydrogen sulfide source. The initial training session shall include a review of the site specific Hydrogen Sulfide Drilling Operations Plan.

3. Hydrogen Sulfide Safety Equipment and Systems

All hydrogen sulfide safety equipment and systems will be installed, tested, and operational prior to drilling below the 9 5/8" intermediate casing.

1. Well Control Equipment
 - A. Choke manifold with minimum of one adjustable choke/remote choke.
 - B. Blowout preventers equipped with blind rams and pipe rams to accommodate all pipe sizes with properly sized closing unit
 - C. Auxiliary equipment including annular type blowout preventer.
2. Protective Equipment for Essential Personnel

Thirty minute self contained work unit located in the dog house and at briefing areas.

Additionally: If H₂S is encountered in concentrations less than 10 ppm, fans will be placed in work areas to prevent the accumulation of hazardous amounts of poisonous gas. If higher concentrations of H₂S are detected the well will be shut in and a rotating head, mud/gas separator, remote choke and flare line with igniter will be installed.

3. Hydrogen Sulfide Protection and Monitoring Equipment

Two portable hydrogen sulfide monitors positioned on location for optimum coverage and detection. The units shall have audible sirens to notify personnel when hydrogen sulfide levels exceed 20 PPM.

4. Visual Warning Systems

A. Wind direction indicators as indicated on the wellsite diagram.

B. Caution signs shall be posted on roads providing access to location. Signs shall be painted a high visibility color with lettering of sufficient size to be readable at reasonable distances from potentially contaminated areas.

4. **Mud Program**

The mud program has been designed to minimize the amount of hydrogen sulfide entrained in the mud system. Proper mud weight, safe drilling practices, and the use of hydrogen sulfide scavengers will minimize hazards while drilling the well.

5. **Metallurgy**

All tubular systems, wellheads, blowout preventers, drilling spools, kill lines, choke manifolds, and valves shall be suitable for service in a hydrogen sulfide environment when chemically treated.

6. **Communications**

State & County Officials phone numbers are posted on rig floor and supervisors trailer. Communications in company vehicles and toolpushers are either two way radios or cellular phones.

7. **Well Testing**

Drill stem testing is not an anticipated requirement for evaluation of this well. If a drill stem test is required, it will be conducted with a minimum number of personnel in the immediate vicinity. The test will be conducted during daylight hours only.

8. **Emergency Phone Numbers**

| | |
|---|----------------------------|
| Eddy County Sheriff's Office | 911 or 575-887-7551 |
| Ambulance Service | 911 or 575-885-2111 |
| Carlsbad Fire Dept | 911 or 575-885-2111 |
| Loco Hills Volunteer Fire Dept. | 911 or 575-677-3266 |
| Closest Medical Facility - Columbia Medical Center of Carlsbad | 575-492-5000 |

| | | |
|------------------------------|------------------------------|---------------------|
| Mewbourne Oil Company | Hobbs District Office | 575-393-5905 |
| | Fax | 575-397-6252 |
| | 2nd Fax | 575-393-7259 |

| | | |
|--------------------------------|-----------------------|---------------------|
| District Manager | Robin Terrell | 575-390-4816 |
| Drilling Superintendent | Frosty Lathan | 575-390-4103 |
| | Bradley Bishop | 575-390-6838 |
| Drilling Foreman | Wesley Noseff | 575-441-0729 |

Operator Name: MEWBOURNE OIL COMPANY**Well Name:** MACHO MAN 18/19 FED COM**Well Number:** 528H**Waste disposal type:** HAUL TO COMMERCIAL FACILITY **Disposal location ownership:** PRIVATE**Disposal type description:****Disposal location description:** NMOCD approved waste disposal locations are CRI or Lea Land, both facilities are located on HWY 62/180, Sec 27, T20S, R32E**Waste type:** SEWAGE**Waste content description:** Human waste & grey water**Amount of waste:** 1500 gallons**Waste disposal frequency :** Weekly**Safe containment description:** 2,000 gallon plastic container**Safe containmant attachment:****Waste disposal type:** HAUL TO COMMERCIAL FACILITY **Disposal location ownership:** PRIVATE**Disposal type description:****Disposal location description:** City of Carlsbad Water Treatment facility

Reserve Pit

Reserve Pit being used? NO**Temporary disposal of produced water into reserve pit?** NO**Reserve pit length (ft.)** **Reserve pit width (ft.)****Reserve pit depth (ft.)** **Reserve pit volume (cu. yd.)****Is at least 50% of the reserve pit in cut?****Reserve pit liner****Reserve pit liner specifications and installation description**

Cuttings Area

Cuttings Area being used? NO**Are you storing cuttings on location?** N**Description of cuttings location****Cuttings area length (ft.)** **Cuttings area width (ft.)****Cuttings area depth (ft.)** **Cuttings area volume (cu. yd.)****Is at least 50% of the cuttings area in cut?****Cuttings area liner****Cuttings area liner specifications and installation description**

Operator Name: MEWBOURNE OIL COMPANY**Well Name:** MACHO MAN 18/19 FED COM**Well Number:** 528H

Section 8 - Ancillary

Are you requesting any Ancillary Facilities?: N**Ancillary Facilities****Comments:**

Section 9 - Well Site

Well Site Layout Diagram:

MACHO_MAN_18_19_FED_COM_528H_WellSiteLayout_20241024102908.pdf

Comments: NONE

Section 10 - Plans for Surface

Type of disturbance: New Surface Disturbance**Multiple Well Pad Name:** MACHO MAN 18/19 FED COM 521 523
526 528**Multiple Well Pad Number:** 4**Recontouring****Drainage/Erosion control construction:** NONE**Drainage/Erosion control reclamation:** NONE

| | | |
|--|---|---|
| Well pad proposed disturbance (acres): 5.92 | Well pad interim reclamation (acres): 2.07 | Well pad long term disturbance (acres): 3.85 |
| Road proposed disturbance (acres): 0.07 | Road interim reclamation (acres): 0 | Road long term disturbance (acres): 0 |
| Powerline proposed disturbance (acres): 0 | Powerline interim reclamation (acres): 0 | Powerline long term disturbance (acres): 0 |
| Pipeline proposed disturbance (acres): 0 | Pipeline interim reclamation (acres): 0 | Pipeline long term disturbance (acres): 0 |
| Other proposed disturbance (acres): 0 | Other interim reclamation (acres): 0 | Other long term disturbance (acres): 0 |
| Total proposed disturbance: 5.99 | Total interim reclamation: 2.07 | Total long term disturbance: 3.85 |

Disturbance Comments: In areas to be heavily disturbed, the top 6 inches of soil material, will be stripped and stockpiled on the perimeter of the well location to keep topsoil viable, and to make redistribution of topsoil more efficient during interim reclamation. Stockpiled topsoil should include vegetative material. Topsoil will be clearly segregated and stored separately from subsoils. Contaminated soil will not be stockpiled, but properly treated and handled prior to topsoil salvaging.

Reconstruction method: The areas planned for interim reclamation will then be recontoured to the original contour if feasible, or if not feasible, to an interim contour that blends with the surrounding topography as much as possible. Where applicable, the fill material of the well pad will be backfilled into the cut to bring the area back to the original contour. The interim cut and fill slopes prior to re-seeding will not be steeper than a 3:1 ration, unless the adjacent native topography is steeper. Note: Constructed slopes may be much steeper during drilling, but will be recontoured to the above ratios during interim reclamation.

Sante Fe Main Office
Phone: (505) 476-3441

General Information
Phone: (505) 629-6116

Online Phone Directory
<https://www.emnrd.nm.gov/oed/contact-us>

State of New Mexico
Energy, Minerals and Natural Resources
Oil Conservation Division
1220 S. St Francis Dr.
Santa Fe, NM 87505

CONDITIONS

Action 460890

CONDITIONS

| | |
|---|---|
| Operator: MEWBOURNE OIL CO P.O. Box 5270 Hobbs, NM 88241 | OGRID: 14744 |
| | Action Number: 460890 |
| | Action Type: [C-101] BLM - Federal/Indian Land Lease (Form 3160-3) |

CONDITIONS

| Created By | Condition | Condition Date |
|---------------|---|----------------|
| mleal | Cement is required to circulate on both surface and intermediate1 strings of casing. | 5/12/2025 |
| mleal | If cement does not circulate on any string, a Cement Bond Log (CBL) is required for that string of casing. | 5/12/2025 |
| matthew.gomez | Notify the OCD 24 hours prior to casing & cement. | 6/11/2025 |
| matthew.gomez | A [C-103] Sub. Drilling (C-103N) is required within (10) days of spud. | 6/11/2025 |
| matthew.gomez | Once the well is spud, to prevent ground water contamination through whole or partial conduits from the surface, the operator shall drill without interruption through the fresh water zone or zones and shall immediately set in cement the water protection string. | 6/11/2025 |
| matthew.gomez | Oil base muds are not to be used until fresh water zones are cased and cemented providing isolation from the oil or diesel. This includes synthetic oils. Oil based mud, drilling fluids and solids must be contained in a steel closed loop system. | 6/11/2025 |
| matthew.gomez | File As Drilled C-102 and a directional Survey with C-104 completion packet. | 6/11/2025 |