

Santa Fe Main Office  
Phone: (505) 476-3441  
General Information  
Phone: (505) 629-6116

State of New Mexico  
Energy, Minerals and Natural Resources

Form C-103  
Revised July 18, 2013

Online Phone Directory Visit:  
<https://www.emnrd.nm.gov/ocd/contact-us/>

OIL CONSERVATION DIVISION  
1220 South St. Francis Dr.  
Santa Fe, NM 87505

<b>SUNDRY NOTICES AND REPORTS ON WELLS</b> (DO NOT USE THIS FORM FOR PROPOSALS TO DRILL OR TO DEEPEN OR PLUG BACK TO A DIFFERENT RESERVOIR. USE "APPLICATION FOR PERMIT" (FORM C-101) FOR SUCH PROPOSALS.)		WELL API NO. 30-15-34032
1. Type of Well: Oil Well <input type="checkbox"/> Gas Well <input checked="" type="checkbox"/> Other		5. Indicate Type of Lease STATE <input checked="" type="checkbox"/> FEE <input type="checkbox"/>
2. Name of Operator Caza Operating		6. State Oil & Gas Lease No.
3. Address of Operator 200 N Lorraine St; Ste 1550 Midland TX 79701		7. Lease Name or Unit Agreement Name Ogden 15
4. Well Location Unit Letter _____ O _____ 990 _____ feet from the _____ S _____ line and _____ 660 _____ feet from the _____ W _____ line Section 15 Township 23S Range 27E NMPM County Eddy		8. Well Number 1
11. Elevation (Show whether DR, RKB, RT, GR, etc.) 3131 GR		9. OGRID Number 249099
		10. Pool name or Wildcat S Carlsbad Morrow 73960

12. Check Appropriate Box to Indicate Nature of Notice, Report or Other Data

NOTICE OF INTENTION TO:

PERFORM REMEDIAL WORK ☐ PLUG AND ABANDON ☐  
 TEMPORARILY ABANDON ☐ CHANGE PLANS ☐  
 PULL OR ALTER CASING ☐ MULTIPLE COMPL ☐

DOWNHOLE COMMINGLE ☐  
 CLOSED-LOOP SYSTEM ☐

OTHER: ☐

SUBSEQUENT REPORT OF:

REMEDIAL WORK ☐ ALTERING CASING ☐  
 COMMENCE DRILLING OPNS. ☐ P AND A ☒  
 CASING/CEMENT JOB ☐

OTHER: ☐

13. Describe proposed or completed operations. (Clearly state all pertinent details, and give pertinent dates, including estimated date of starting any proposed work). SEE RULE 19.15.7.14 NMAC. For Multiple Completions: Attach wellbore diagram of proposed completion or recompletion.

Please see attached.

Spud Date:

Rig Release Date:

I hereby certify that the information above is true and complete to the best of my knowledge and belief.

SIGNATURE Austin Tramell TITLE Director Environmental & Regulatory DATE 05/23/2025

Type or print name Austin Tramell E-mail address: atramell@3roperating.com PHONE: 575-499-4919

**For State Use Only**

APPROVED BY: \_\_\_\_\_ TITLE \_\_\_\_\_ DATE \_\_\_\_\_

Conditions of Approval (if any):

5/9/2025

MIRU PU, Check well pressure 2600# casing 800' tubing.

5/12/2025

Check well pressure 2600# casing 800#tubing, open well up to blow down tank 2 hrs bleed down to 900#, pump 270 bbls of MLF (brine) killed well, ND well head, NU bop, TOO H with 2 3/8 production tubing, left 3500' on tubing in hole.

5/13/2025

Check well pressure 800# on tubing and casing, bleed well down to casing and tubing, top off well 35 bbls of MLF (brine).

5/14/2025

Bleed down well 800# on tubing and casing bleeding well down, TOO H with rest, TIH with CR hung at 4783', TOO H call for Bit and scraper, TIH with BHA (bit and scraper), chase down to 10892', RU pump try to circulate stater broke TOO H w/20 Stands to get out of perfs.

5/15/2025

Check well pressure 0 casing and tubing, TIH with 20 stands, RU pump to tubing, break circulation, pump 150 bbls MLF (brine), TOO H remove Bit and scraper, TIH with CR to 10892', RU pump to tubing break circulation, M&P plug 1 and 2 combined NMOCD approved) 50 sxs Class H 14.8 @ 1.06 yield 10892'-10500', MUH to 10322' set CR at 10322', RU pump to tubing, break circulation M&P plug 3, 25 sxs of Class H cement 1.06 yield 14.8# 10322'-10072', TOO H SB 20.

5/16/2025

TOO H remove stinger, RU WL RIH with RBL to 9998', log well from 9998' to surface, TIH to 8900', TIH to 8900'.

5/17/2025

RU to break circulation, M&P plug 8900'-8650' 25 sxs Class H 10006 yield 14.08#, MUH to 8250', RU to tubing break circulation, M&P plug 6 25 sxs 5606'-5406' 14.08#, MUH to 4242'.

5/19/2025

M&P plug 7 4242'-4052' 25 sxs Class C 1.32 yield 14.8#, MUH to 2942', M&P plug 9 2942'-2742' 25 sxs Class C cement 1.32 yield 14.8#, MUH to 2200', M&P plug 10 2200'-2000' 25 sxs of Class C 1.32 yield 14.8#, MUH to 670'.

5/20/2025

RU WL, RIH perf @ 670', try to get injection rate pressure up to 500', NMOCD ordered to try 1200# and pressured up 120#, NMOCD ordered to perf @ 260', RU WL RIH perf @ 280', try to get injection rate pressure up to 700 then 1200, TOO H, RU WL perf at 300', TIH set 5 ½" packer @ 320', try to get rate pressure up to 700 and 1200#, MUH to 280 try to get injection up 1200#, TIH open ended to 720', RU pump to tubing break circulation M&P plu 12 720'-160' 52 sxs Class C cement 1.32 yield 14.8#.

5/21/2025

TIH to 153', RU pump to tubing M&P surface 16 sxs Class C cement 14.8# 1.32 yield, ND BOOP top off well. RD PU.

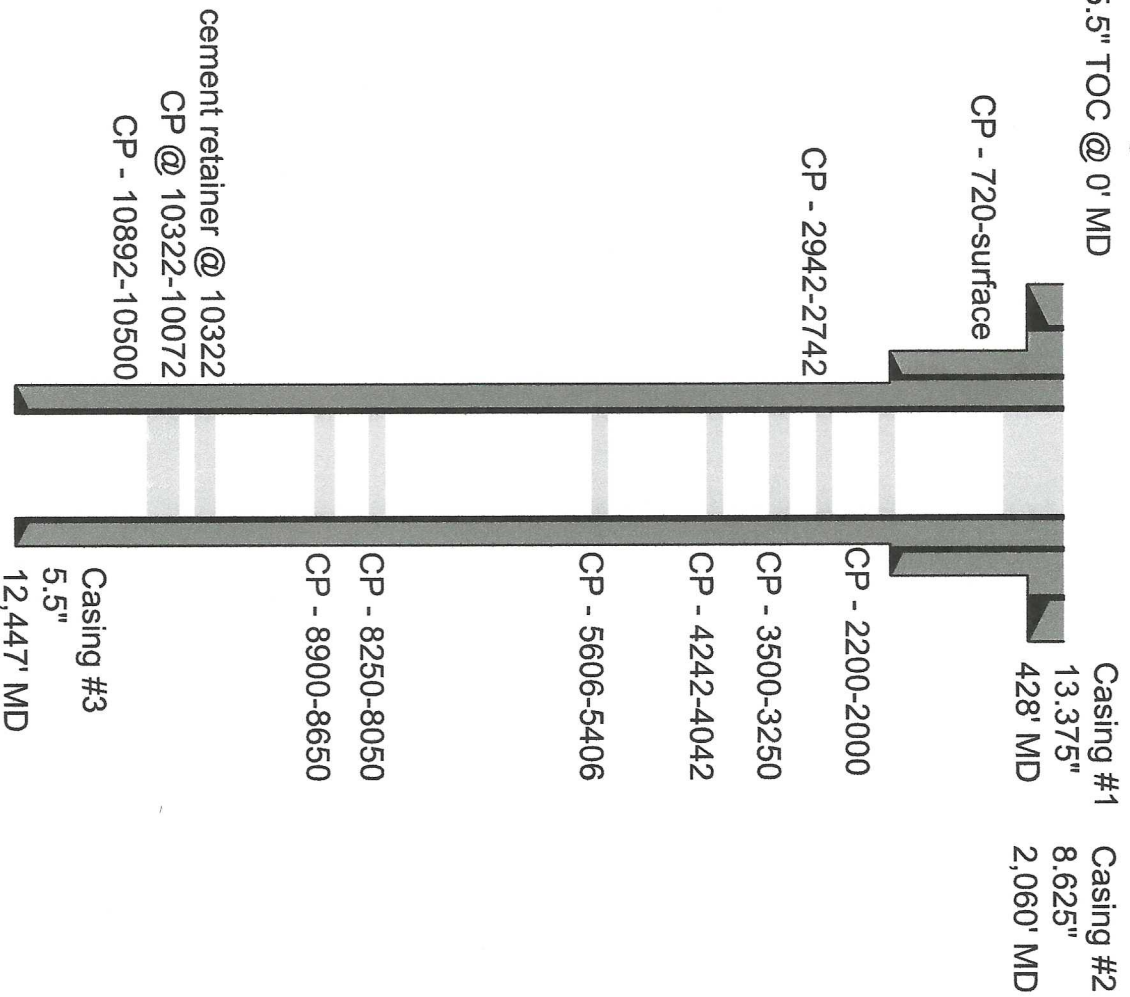
Caza Operating  
**Ogden 1 - plugged**

3001534032

13.375" TOC @ 0' MD

8.625" TOC @ 0' MD

5.5" TOC @ 0' MD



5/25/2025  
Clay Tipton  
Wellbore Diagram by WellboreBuilder.com



Sante Fe Main Office  
Phone: (505) 476-3441

General Information  
Phone: (505) 629-6116

Online Phone Directory  
<https://www.emnrd.nm.gov/ocd/contact-us>

State of New Mexico  
Energy, Minerals and Natural Resources  
Oil Conservation Division  
1220 S. St Francis Dr.  
Santa Fe, NM 87505

CONDITIONS

Action 467166

CONDITIONS

Operator: CAZA OPERATING, LLC 200 N Loraine St Midland, TX 79701	OGRID: 249099
	Action Number: 467166
	Action Type: [C-103] Sub. Plugging (C-103P)

CONDITIONS

Created By	Condition	Condition Date
gcordero	Clean Location in accordance with 19.15.25.10 NMAC.	7/3/2025
gcordero	Submit C-103Q within one year of plugging.	7/3/2025