

Well Name: NAVAJO	Well Location: T31N / R17W / SEC 5 / NWSE / 36.928711 / -108.651108	County or Parish/State: SAN JUAN / NM
Well Number: 3	Type of Well: OIL WELL	Allottee or Tribe Name: SHIPROCK
Lease Number: 142060365	Unit or CA Name:	Unit or CA Number:
US Well Number: 300451106300S1	Operator: R J ENTERPRISES	

Subsequent Report

Sundry ID: 2870385

Type of Submission: Subsequent Report

Date Sundry Submitted: 08/27/2025

Date Operation Actually Began: 07/24/2025

Type of Action: Plug and Abandonment

Time Sundry Submitted: 03:15

Actual Procedure: Well plugged by the Navajo Nation, contractor Walsh Engineering and Production. Work completed July 28, 2025. Daily Events 7/24 SICP=0PSI. MIRU from King Kong #15. JHA with crew. Could not transfer pipe trailer, SSS sent truck pusher that had pickup with goose neck pin and sent on a different job. Called hotshot service, could not get truck till 1PM. Crew finished spotting equipment and rigging up. Secured the well and sent crew to towrn for the rest of the day. Crew off location at 14:30. Plan for tomorrow is to make bit and scraper run. RIH with CICR and set. Circulate wellbore with fresh water pkr fluid. Run CBL. 7/25 SICP=0PSI. JHA with crew. Function test BOP. Tally tbg and tools. TIH with Bit and Scraper. Tagged at 105' possibly parted casing. Attempted to rotate through bad spot with no results. POH with bit and scraper. TIH with 2-3/8" open ended tbg to 1091' (34jts). Attempt to establish circulation, took 17 bbls to load and get circulation. Contacted engineering. Consulted with NNMinerals inspector about spotting cmt plug. (150'). Establish circulation with 5 bbls water. M&P 12 sks, 1.15 yield, 16.0#, 13.8 cuft, 2.1 bbls Class "G" Neat cement from 1091' - 906'. Displaced with 3bbls fresh water pkr fluid. Laid down 6 jts and stood back 13 stands and a single. WOC 4 Hrs.Tagged TOC at 1004'. POH with tag sub. RU TWG for CBL. WL tagged TOC @ 948'. Logged on the way out. RD WL and TIH with open ended tbg to 948'. M&P 16 sks, 1.15, 16#, 18.4 cuft, 3.3 bbls of Class "G" neat cement from 948' to 753'. Displaced with 2.9 bbls of pkr fluid. POH with tbg. Secured the well for the evening. Crew off location at 16:30. NNMinerals Inspector Johnny Begaye on location to witness Operation. 7/28 SICP=0PSI. JHA with crew. Function test BOP. TIH with tag sub. Tagged TOC @ 767'. POH with tbg and tag sub. RU TWG. Perforate 4 holes at 150'. POH with guns. Verified all shots fired. Attempted to establish circulation to cellar. Pumped 1.5 bpm at zero psi. Contacted engineering and NNMinerals inspector. RIH and shoot 4 holes at 50'. POH with guns. Verified all shots fired. TIH with 5 jts, EOT at 160'. Load csg with water. M&P 100 sks, 1.15 yield, 15.9# w-2% CACL in mix water, 115 cuft, 20.5 bbls. (pumped cement til good returns

Well Name: NAVAJO	Well Location: T31N / R17W / SEC 5 / NWSE / 36.928711 / -108.651108	County or Parish/State: SAN JUAN / NM
Well Number: 3	Type of Well: OIL WELL	Allottee or Tribe Name: SHIPROCK
Lease Number: 142060365	Unit or CA Name:	Unit or CA Number:
US Well Number: 300451106300S1	Operator: R J ENTERPRISES	

to wash pit, then closed csg valve and bullheaded remaining cement into perfs. Started circulating fluid in cellar for a little then circulation quit). POH laying down tbg. ND BOP and companion flange. Washed up bop and tbg. WOC. Cementer informed me that the AWS Welder is still on another job and could not get a third party welder. Cement is at surface on both strings. RDMOL to Navajo U #2, will spot rig on location and move the rest of the equipment in the morning. Will be cutting off in the morning as well. Rig off location at 15:30. NNMinerals Inspector Val Uentillie and Johnny Begaye on location to witness operation.

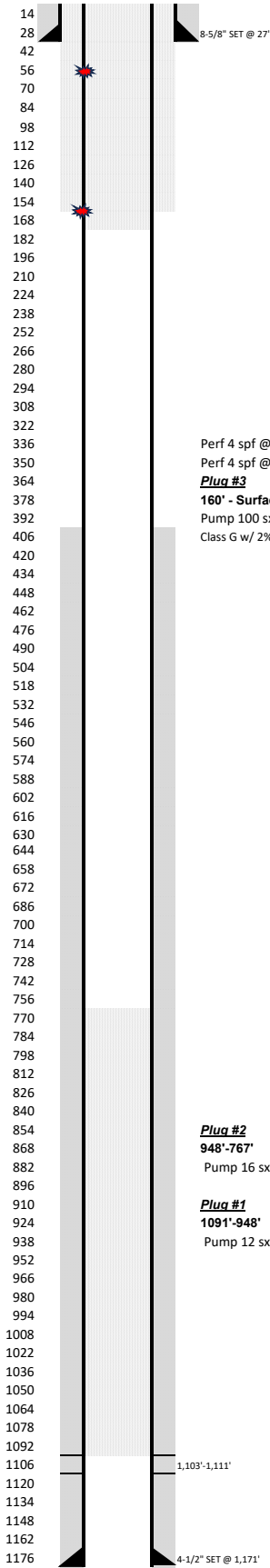
SR Attachments

Actual Procedure

SR_ABD_WBS_U_3_3004511063_20250827151440.pdf

BLM Point of Contact

BLM POC Name: KENNETH G RENNICK	BLM POC Title: Petroleum Engineer
BLM POC Phone: 5055647742	BLM POC Email Address: krennick@blm.gov
Disposition: Accepted	Disposition Date: 08/28/2025
Signature: Kenneth Rennick	



WELL: NAVAJO U #003	COUNTY: SAN JUAN	API #: 30-045-11063
FIELD: HORSESHOE GALLUP	STATE: NM	P&A 7/28/2025
FORMATION: GALLUP	LEASE: 14-20-0603-65	
LOCATION: 2,310' FSL & 1,650' FEL	SECTION: 5	TOWNSHIP: 31N
TD: 1,208'	PBDT: 1,112'	RANGE: 17W
	ELEV GL: 5,274'	ELEV-RKB: UNK

CASING RECORD

7/24
SICP=OPSI. MIRU from King Kong #15. JHA with crew. Could not transfer pipe trailer, SSS sent truck pusher that had pickup with goose neck pin and sent on a different job. Called hotshot service, could not get truck till 1PM. Crew finished spotting equipment and rigging up. Secured the well and sent crew to town for the rest of the day. Crew off location at 14:30. Plan for tomorrow is to make bit and scraper run. RIH with CICR and set. Circulate wellbore with fresh water pkr fluid. Run CBL.

7/25
SICP=OPSI. JHA with crew. Function test BOP. Tally tbg and tools. TIH with Bit and Scraper. Tagged at 105' possibly parted casing. Attempted to rotate through bad spot with no results. POH with bit and scraper. TIH with 2-3/8" open ended tbg to 1091' (34jts). Attempt to establish circulation, took 17 bbls to load and get circulation. Contacted engineering. Consulted with NNMinerals inspector about spotting cmt plug. (150'). Establish circulation with 5 bbls water. M&P 12 sks, 1.15 yield, 16.0#, 13.8 cuft, 2.1 bbls Class "G" Neat cement from 1091' - 906'. Displaced with 3bbls fresh water pkr fluid. Laid down 6 jts and stood back 13 stands and a single. WOC 4 Hrs.Tagged TOC at 1004'. POH with tag sub. RU TWG for CBL. WL tagged TOC @ 948'. Logged on the way out. RD WL and TIH with open ended tbg to 948'. M&P 16 sks, 1.15, 16#, 18.4 cuft, 3.3 bbls of Class "G" neat cement from 948' to 753'. Displaced with 2.9 bbls of pkr fluid. POH with tbg. Secured the well for the evening. Crew off location at 16:30. NNMinerals Inspector Johnny Begaye on location to witness Operation.

7/28
SICP=OPSI. JHA with crew. Function test BOP. TIH with tag sub. Tagged TOC @ 767'. POH with tbg and tag sub. RU TWG. Perforate 4 holes at 150'. POH with guns. Verified all shots fired. Attempted to establish circulation to cellar. Pumped 1.5 bpm at zero psi. Contacted engineering and NNMinerals inspector. RIH and shoot 4 holes at 50'. POH with guns. Verified all shots fired. TIH with 5 jts, EOT at 160'. Load csg with water. M&P 100 sks, 1.15 yield, 15.9# w-2% CACL in mix water, 115 cuft, 20.5 bbls. (pumped cement til good returns to wash pit, then closed csg valve and bullheaded remaining cement into perfs. Started circulating fluid in cellar for a little then circulation quit). POH laying down tbg. ND BOP and companion flange. Washed up bop and tbg. WOC. Cementer informed me that the AWS Welder is still on another job and could not get a third party welder. Cement is at surface on both strings. RDMOL to Navajo U #2, will spot rig on location and move the rest of the equipment in the morning. Will be cutting off in the morning as well. Rig off location at 15:30. NNMinerals Inspector Val Uentillie and Johnny Begaye on location to witness operation.

Perf 4 spf @ 150'
Perf 4 spf @ 50'
Plug #3
160' - Surface
Pump 100 sxs (115 cf)
Class G w/ 2% CC

Plug #2
948'-767'
Pump 16 sxs (18.4 cf) Class G Neat

Plug #1
1091'-948'
Pump 12 sxs (13.8 cf) Class G Neat

Sante Fe Main Office
Phone: (505) 476-3441

General Information
Phone: (505) 629-6116

Online Phone Directory
<https://www.emnrd.nm.gov/oed/contact-us>

State of New Mexico
Energy, Minerals and Natural Resources
Oil Conservation Division
1220 S. St Francis Dr.
Santa Fe, NM 87505

CONDITIONS

Action 504836

CONDITIONS

Operator: R - J ENTERPRISES P.O. Box 51 Farmington, NM 874990051	OGRID: 18322
	Action Number: 504836
	Action Type: [C-103] Sub. Plugging (C-103P)

CONDITIONS

Created By	Condition	Condition Date
loren.diede	Accepted for Record	9/10/2025