

Well Name: KING KONG	Well Location: T30N / R17W / SEC 4 / SWNE / 36.844467 / -108.633972	County or Parish/State: SAN JUAN / NM
Well Number: 15	Type of Well: OIL WELL	Allottee or Tribe Name: SHIPROCK
Lease Number: 14200603639	Unit or CA Name:	Unit or CA Number:
US Well Number: 300452184200S1	Operator: ACTION OIL CO INC	

Subsequent Report

Sundry ID: 2870592

Type of Submission: Subsequent Report	Type of Action: Plug and Abandonment
Date Sundry Submitted: 08/28/2025	Time Sundry Submitted: 01:36
Date Operation Actually Began: 07/17/2025	

Actual Procedure: Well plugged by the Navajo Nation, contractor Walsh Engineering and Production. Work completed July 23, 2025. Daily Events, see attachment

SR Attachments

Actual Procedure

SR_ABD_WBS_15_3004521842_20250828133455.pdf

SR_ABD_Daily_15_3004521842_20250828132940.pdf

BLM Point of Contact

BLM POC Name: KENNETH G RENNICK	BLM POC Title: Petroleum Engineer
BLM POC Phone: 5055647742	BLM POC Email Address: krennick@blm.gov
Disposition: Accepted	Disposition Date: 08/28/2025
Signature: Kenneth Rennick	

7/17

MIRU TWG and Cement crew. JHA with crew. TIH with junk basket and 2.25OD gage ring. Ran in to 1040'. POH. Bullhead 6 bbls of pkr fluid down 2-7/8" casing while running cibp. Got 6 bbls pumped and set cibp at 1022'. POH with setting tool. Attempted to pressure test csg to 500 psi. Got to 200 psi and pressure dropped to zero. Possibly popping hole in csg. RIH with wireline for CBL from 1022' to surface. Tagged cibp at 1022'. Finished with CBL. Run in with dumpbailer to dumps 3 sks of cement from 1022' to 916'. Made 7 total dumpbailer runs. RD bailer and TIH with perf guns. Shot (4) holes at 488'. POH, verified all shots fired. RD WL. Started pumping 3 bbls of green dye water followed by 20 bbls of water at 2 bpm at 100 psi. SD. After 10 minutes dye water started seeping out of casing stubb next to wellhead. Shut well in for the evening. Off location at 1800. Waiting on BLM and Engineering for next step. Possibly pump 142 sks. Val Uentillie NNMinerals Inspector on location to witness operation.

7/18

JHA with crews. Establish injection rate down casing. Got 2 bpm at 150 psi. M&P 75 sks, 1.15 yield, 15.8#, 86.25 cuft, 15.4 bbls of class "G" neat cement. Started pressuring up after appx 50 sks mixed. Displaced with 1.5 bbls water and shutin. Getting back a small amount of thin cement water from casing stubb next to wellhead, but no circulation around current wellhead. TOC at 250'. Shut in with 500psi on casing ID. Opened up tbg and TIH with perf gun. Tagged TOC at 234'. Perfed 4 holes at 150'. Verified all shots went. Attempted to establish injection rate and circulation. Pressured up to 600 psi, no rate or circulation. Discussed with BLM Engineer. TIH with guns and shoot 4 holes at 80'. Verified all shots went. Attempt injection rate and pressure up to 700 psi. Could not get injection rate. Perforated 4 holes at 40'. Attempted injection rate. Pressured to 800 psi. Holding. Perforated at 40'. Attempted to establish inj rate. Pressured up to 600 psi. bleeding down to 150 and holding. Made 3 attempts with same results. Perforated at 30'. Established inj rate of 2 bpm at 100 psi. Got good circulation out of csg stubb/mouse hole. TIH with 200' of 1" poly pipe. Established circulation with 1 bbl. M&P 42 sks total, 1.18, 15.8#, 48.3 cuft, 8.6 bbls class "G" neat cement form 200' to surface. (Getting good cement returns from stubb) POH with poly pipe and continue with cement. Displaced cement with .5 bbls. TOC at 86'. Shut 2-7/8 in. Wash pumps and lines. Flushed out poly pipe. Crew off location at 17:00. Val Uentillie NNMinerals Inspector and Ken Renick BLM Engineer on location to witness operation.

7/21

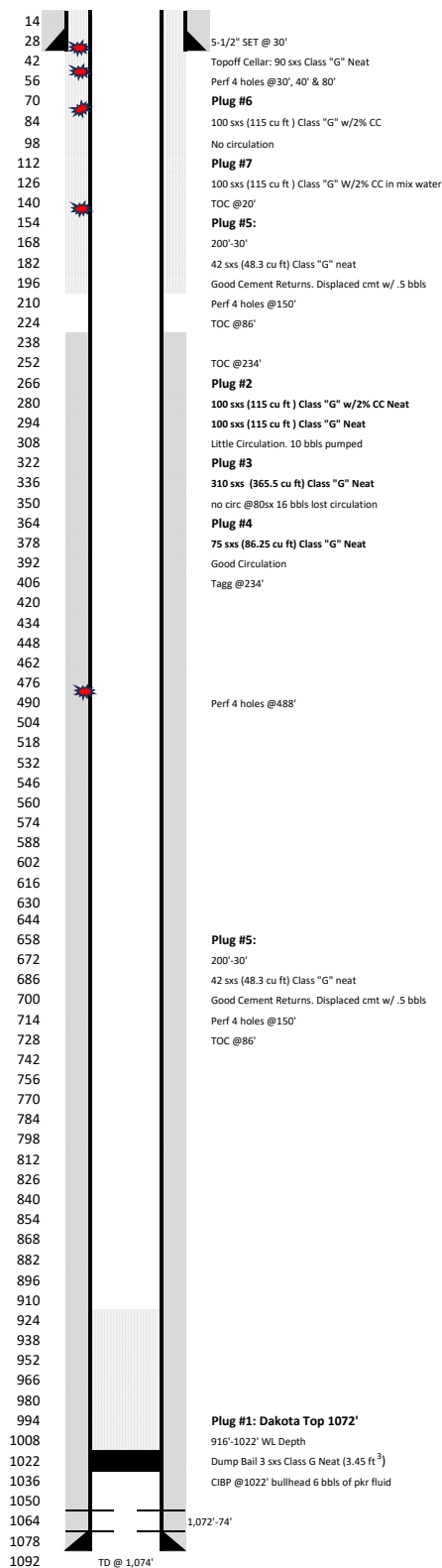
SICP=0psi. JHA with crew. Cellar had appx 10" of green dye water from last Thursday. Attempt to est injection rate and circulation around surface casing. (Noticed very slight flow from Csg Stuff/Mouse hole). Pressured up on casing to 400 psi and shut down, pressure bled down to zero in 30 seconds. Initial rate was 1bpm @80 psi, 2bpm @100psi, 3bpm @ 120 psi, 3.5 bpm @ 170 psi. Reported findings to Engineering. BLM Engineer and NNMinerals inspector on location. M&P 100sks, 15.8#, 115 cuft, 20.5 bbls, Class "G" w-2% CACL and 100 sks, 15.8#, 115 cuft, 20.5 bbls of Class "G" neat cement and displaced with .5 bbls of water. Shut in for 4 hr WOC. Checked pressure on 2-7/8 csg. Zero pressure. Attempted to establish an injection rate, got to 850psi sd, lost 580psi in 2 minutes. Increased to 950. Lost 600 in 3 minutes. Increased pressure to 2860psi, started getting inj rate of .5 bpm. Highest rate achieved was 4 bpm at 480 psi. Shut down at 10 bbls pumped, started getting a little circulation. Dug cellar down around 5-1/2 casing and found a 1" hole from corrosion. M&P neat cement - no CACL. M&P a total of 310 sks, 1.15, 15.8#, 365.5 cuft, 63.5 bbls. Displaced with half a bbl and shut in. (At 80 sks, 16 bbls pumped lost what little circulation we had. Increased rate to 3.3 bpm at 100 psi, still no circulation). NNMinerals Inspector Val Uentillie and BLM Engineer Ken Renick in location to observe operation in the morning. Crew off location at 18:30.

7/22

SITP=0PSI. Attempt to pressure test 2-7/8 casing. Got to 800 psi. Lost 400 in 30 seconds. Worked pressure at 600 psi, started getting circulation from corrosion hole in surface casing. Started with 2bpm/300psi, 3bpm/0psi, 4bpm/150psi. Circulation stopped. SD at 5 bbls pumped. Discussed results with Engineering, BLM and NNMinerals. M&P 100sks, 1.15 yield, 15.8#, 115 cuft, 20.5 bbls Class "G" cement w-2% CACL in mix water. Displace with .25 bbls of water. Before pumping cmt, est inj rate 4bpm at 150 psi. Heard a popping sounds and wellhead shook. Still no circulation. SD for 5 minutes, cmt is gravity feeding out of tub. Displaced with 1/4 bbl and shut in for 4 hr WOC. Attempted pressure test to 500 psi. Got to 300 psi and lost pressure started pumping at 1 bpm at 150 psi. No circulation. Pumped 1 bbl and shut down. M&P 100 sks, 115 cuft, 20.5 bbls Class "G" cement with 2% CACL in mix water. Pumped 10 bbls at .7bpm at 20 psi, shut down pump and gravity feed 10.5 bbls cement. SD. Washed P&L. Displaced with .25 bbls water and shut in for the night. Crew off location at 19:00. NNMinerals Inspector Val Uentillie on location to witness operation.

7/23

SITP=0PSI. JHA with crew. Cellar is bone dry. Opened valve and run tank strap. Tagged TOC at 20'. Attempted pressure test to 800 psi. Lost 400 psi in 1 minute. Contact engineering. Filled cellar with water for 30 minute bubble test. BLM Engineer Ken Renick and NNMinerals Johnny Begaye on location to witness test. No bubbles. Got the OK to cutoff wellhead and place dry hole marker. Cut off wellhead from the casing strings, also from stub/mouse hole. Welded dry hole marker on the casing strings. Welded plate on stub/mouse hole. RIH with 20' of 1" poly pipe. Topped of 2-7/8" csg and cellar with 90 sks class "G" neat cement. RDMOL. NNMinerals Inspector Johnny Begaye and BLM Engineer Ken Rinick on location to witness operations. Crew off location at 1300.



WELL: KING KONG #015		COUNTY: SAN JUAN	API #: 30-045-21842
FIELD: SALT CREEK		STATE: NM	P&A 7/23/2025
FORMATION: DAKOTA		LEASE: 14-20-0603-639	
LOCATION: 1,810' FNL & 1,980' FEL		SECTION: 4	TOWNSHIP: 30N RANGE: 17W
TD: 1,074'	PBDT: UNK	ELEV GL: 5,106'	ELEV-RKB: UNK

P&A Summary
7/17
MIRU TWG and Cement crew, JHA with crew, TIH with jackson and 2.2500 gauge ring, Rin in 1040', POH. Bulkhead 6 bbls of pkrf fluid down 2-7/8" casing while running cplb. Got 6 bbls pumped and set cplb at 1022'. POH with setting tool. Attempted to pressure test csq to 500 psi. Got to 200 psi and pressure dropped to zero. Possibly popping hole in cs. Rgt. with wireline for CBL from 1022' to surface. Tagged cplb at 1022'. Finished with CBL. Rin runs cement to dump 3 sks of cement from 1022' to 915'. Made 7 total dumbpumper runs. RD bailer and TIH with perf gun. Skd 4 holes at 585'. POH, verified all shots fired. RD WL. Started pumping 3 bbls of green dye water followed by 20 bbls of water at 2 bpm at 1002'. Skd. After 10 minutes dye water started seeping out of casing stub neck to wellhead. Shut well in for the evening. Off location at 1800. Waiting on BLM and Engineering for next test. Possibly pump 142 sks. Val Uentille NMMNaires Inspector on location to witness operation.

7/18
JHA with crews. Established injection rate down casing. Gout 2 bpm at 150 psi. M&P 75 lbs, 1.1 yield, 15.8#, 86.25 cup, 15.4 lbs of class "G" neat cement. Started pressuring up after apps 50 cs mixed. Displaced with 1.5 bbls water and shuttin. Getting back a small amount of thin cement water from casing stubb next to wellhead, but no circulation around current wellhead. Gout at 250'. Shut in with 500psi on casing ID. Opened up tbq and TH with perf gun. Gout at 250'. Perf gun hit. Perforated 4 holes. Verified all holes at 250'. Established circulation. Pressured up to 600 psi. No circulation, no rate or circulation. Discussed with BLM Engineer. TH with guns and shoot 4 holes at 80'. Verified all shots went. Attempt injection rate and pressure up to 700 psi. Could not get injection rate. Perforated 4 holes at 40'. Attempted at injection rate. Pressured to 800 psi. Holding. Perforated at 40'. Attempted to establish inj rate. Pressured up to 600 psi. bleeding down to 150 and holding. Made 3 attempts with same results. Perforated at 30'. Established inj rate of 2 bpm at 100 psi. Gout good circulation out of csg stubb/mouse hole. TH with 200' of 1" poly pipe. Established circulation with 1 bbl. M&P 42 cs total, 1.18, 15.8#, 48.3 cs, 8.6 bbls class "G" neat cement from 200' to surface. (Getting good cement returns from stubby) POH with poly pipe and continue to 200'. Perforated 4 holes at 200'. Gout 45 bps. Gout 2 bps. Shut in. Pushed out stubby. Crew off location at 17:00. Val
Ventilite NMI Inspectors and Ken Rinkick BLM Engineer on location to witness operation.

7/21/2001. JHA with crew. Cellar had approx 10' of green dye water from last Thursday. Attempted to exit injection rate and circulation around surface casing. (Noticed very slight flow from CsgStop/Mouse hole). Pressured up on casing to 400 psi and shut down, pressure bled down to zero in 30 seconds. Initial rate was 1bpm @80 psi, 2bpm @120 psi, 3bpm @ 120 psi, 3.5 bpm @ 170 psi. Reported findings to Engineering. BLM Engineer and NMMNMinerals Inspector on location. M&P 1000s, 15.8h, 11f, cuts, 20.5 bbls, Class "G" w-2% CAC and 100 psi, 15.8h, 11f, cuts, 20.5 bbls of Class "G" neat cement and displaced with .5 bbls of water. Shut in for 4 hr WOC. Casing pressure went 2-7/8 csg. Zero pressure. Attempted to establish an injection rate, got to 850psi sd, lost 580psi in 2 minutes. Increased to 950. Lost 600 in 3 minutes. Increased pressure to 2860psi, started getting inj rate of 1 bpm. Highest rate achieved was 1.5 bpm @ 400 psi. Shut down at 10 minutes, started getting a little circulation. Cug collar down around 5-1/2 casing and found a "1" hole from corrosion. M&P neat cement - no CAC. M&P a total of 310 bbls, 1.15, 15.8h, 365.5 cut, 63.5 bbls. Displaced with half a bbl and shut in. (At 80 psi, 16 bbls pumped lost what little circulation we had. Increased rate to 3.3 bpm at 100 psi, still no circulation). NMMNMinerals Inspector Val Uentille and BLM Engineer Ken Renick in location to observe operation in the morning. Crew off location at 18:30.

7/22-OPSI. Attempted to pressure test 2-7/8 casing. Goto to 800 psi. Lost 400 in 30 seconds. Worked pressure at 600 psi, started getting circulation from corrosion hole in surface casing. Started with 2bpm/300psi, 3bpm/10psi, 4bpm/150psi. Circulation stopped. SD at 5 bbls pumped. Discussed results with Engineering, BLM and NNMinerals. M80K 100psi, 1.55 yield, 15.88, 115 cft, cutb 20 psi. Class "G" cement w-2% KAlc in mix water. Displace with 25 bbls of water. Before pumping cutb, set inj rate 1/4bbl at 150 psi. Heard a popping sounds and wellhead shock. Still no circulation. SD for 5 minutes, cement is gravity feeding out of cutb. Displaced with 3/4bbl and shut in for a hr WOC. Attempted pressure test to 500 psi. Goto to 300 psi and lost pressure started at 1 bpm at 150 psi. No circulation. Pumped 1 bbl and shut in for 100 seconds. SD at 100 psi, 2.05 bbls Class "G" cement with 2% KAlc in mix water. Pumped 10 bbls at 7bpm at 20 psi, shut down pump and gravity feed 10.5 bbls cement. SD. Washed P&L. Displaced with 25 bbls water and shut in for the night. Crewed off location at 19:00. NNMinerals Inspector Val Uentille on location to witness operation.

7/23
STTP=OPSI. JHA with crew. Cellar is bone dry. Opened valve and run tank strap. Tagged TOC at 20'. Attempted pressure test to 800 psi. Lost 400 psi in 1 minute. Contact engineering. Filled cellar with water for 30 minute bubble test. BLM Engineer Ken Renick and NNMinerals Johnny Begaye on location to witness test. No bubbles. Got OK to cut off welded head and place dry hole marker. Cut off wellhead from the casing strings, also from stellar/mouse hole. Welded dry hole marker on the casing strings. Welded plate on stellar/mouse hole. RIH with 20' of 1" poly pipe. Topped of 2-7/8" csg and cellar with 90 sks class "G" neat cement. RDMOL NNMinerals Inspector Johnny Begaye and BLM Engineer Ken Renick on location to witness operations. Crew off location at 1300.

Plug #5:
200'-30'
42 sxs (48.3 cu ft) Class "G" neat
Good Cement Returns. Displaced cmt w/ .5 bbls
Perf 4 holes @150'
TOC @86'

Plug #1: Dakota Top 1072'
916'-1022' WL Depth
Dump Bail 3 sxs Class G Neat (3.45 ft³)
CIBP @1022' bullhead 6 bbls of pkf fluid

Sante Fe Main Office
Phone: (505) 476-3441

General Information
Phone: (505) 629-6116

Online Phone Directory
<https://www.emnrd.nm.gov/ocd/contact-us>

State of New Mexico
Energy, Minerals and Natural Resources
Oil Conservation Division
1220 S. St Francis Dr.
Santa Fe, NM 87505

CONDITIONS

Action 504847

CONDITIONS

Operator: ACTION OIL CO INC 437 Road 2900 Aztec, NM 87410	OGRID: 25872
	Action Number: 504847
	Action Type: [C-103] Sub. Plugging (C-103P)

CONDITIONS

Created By	Condition	Condition Date
loren.diede	Accepted for Record	9/10/2025