

Well Name: SAN JUAN 30-4 UNIT	Well Location: T30N / R4W / SEC 20 / NESW / 36.794373 / -107.281067	County or Parish/State: RIO ARRIBA / NM
Well Number: 30	Type of Well: CONVENTIONAL GAS WELL	Allottee or Tribe Name:
Lease Number: NMSF079487A	Unit or CA Name: SAN JUAN 30-4 UNIT--PC	Unit or CA Number: NMNM78418A
US Well Number: 300390779100S1	Well Status: Producing Gas Well	Operator: MORNINGSTAR PARTNERS LP

Subsequent Report

Sundry ID: 2677668

Type of Submission: Subsequent Report

Date Sundry Submitted: 06/20/2022

Date Operation Actually Began: 05/26/2022

Type of Action: Workover Operations

Time Sundry Submitted: 08:09

Actual Procedure: MorningStar Operating performed a casing squeeze repair between 3282' and 3313' with 200 sx of cement. Attached are the Daily Reports, Current WBD, Post-squeeze CBL, and MIT Chart.

SR Attachments

Actual Procedure

Post_Documents_SJ_30_4_Unit_30_20220620080807.pdf

Well Name: SAN JUAN 30-4 UNIT	Well Location: T30N / R4W / SEC 20 / NESW / 36.794373 / -107.281067	County or Parish/State: RIO ARRIBA / NM
Well Number: 30	Type of Well: CONVENTIONAL GAS WELL	Allottee or Tribe Name:
Lease Number: NMSF079487A	Unit or CA Name: SAN JUAN 30-4 UNIT--PC	Unit or CA Number: NMNM78418A
US Well Number: 300390779100S1	Well Status: Producing Gas Well	Operator: MORNINGSTAR PARTNERS LP

Operator

I certify that the foregoing is true and correct. Title 18 U.S.C. Section 1001 and Title 43 U.S.C. Section 1212, make it a crime for any person knowingly and willfully to make to any department or agency of the United States any false, fictitious or fraudulent statements or representations as to any matter within its jurisdiction. Electronic submission of Sundry Notices through this system satisfies regulations requiring a

Operator Electronic Signature: CONNIE BLAYLOCK	Signed on: JUN 20, 2022 08:08 AM
Name: MORNINGSTAR PARTNERS LP	
Title: Regulatory Technician	
Street Address: 400 W 7th St.	
City: Forth Worth	State: TX
Phone: (817) 334-7882	
Email address: CBLAYLOCK@MSPARTNERS.COM	

Field

Representative Name: Amy Byars		
Street Address:		
City:	State:	Zip:
Phone:		
Email address: abyars@mspartners.com		

BLM Point of Contact

BLM POC Name: KENNETH G RENNICK	BLM POC Title: Petroleum Engineer
BLM POC Phone: 5055647742	BLM POC Email Address: krennick@blm.gov
Disposition: Accepted	Disposition Date: 06/22/2022
Signature: Kenneth Rennick	



Job Summary for SAN JUAN 30-4 UNIT 30 PC - 3003907791

Well Maintenance-05/26/2022

Date	Summary
05/26/2022	<p>5/26/20225/26/2022</p> <p>PJSM. LOAD OUT SUPPORT EQUIPMENT. ROAD WSU DWS 34 & SUPPORT F/ ARBOLES 29A#1 . SI SUPPORT, MIRU WSU. CSG AND TBG 5PSI, ND WELL H, PULL ON TBG HANGER TO CHECK IF PIPE MOVED, WHEN TBG HANGER WAS 8" HIGH TBG BROKE AT 20K, CONTINUE TO LAY DOWN TBG, PULLED OUT A 6', 10', 10' TBG SUBS AND 12 JTS, TBG PARTED AT THE TREADS, NU BOP AND RIG FLOOR WHILE WAITING FOR FISHING TOOLS. TIH W/OVER SHOT AND 14 JTS, FISH WAS 11' DEEPER, PULLED ON FISH AND BEGAN TO MOVE AT 35K TO 25K AFTER 6' HANG UP AGAIN, PULLED ON TBG AGAIN AND BROKE AT 35K, TOH W/ OVER SHOT AND 6 JTS OF FISH. TIH W/ OVER SHOT AND 20 JTS TO CATCH PIPE, COULDN'T LATCH ON TO THE PIPE, TOH W/ OVER SHOT, TIH W/ OVER SHOT FOR THE COLLAR, LATCH ON TO THE FISH, PULLED UP TO 32K LEFT IT ON TENSION, 5 MIN LATER BEGAN TO LOSE WEIGHT AND MOVED UP HOLE SLOWLY, TOH W/ OVER SHOT, LAY DOWN 52 MORE JTS, TOH W/ 3 STS AND FOUND FLUID IN TBG, (THE OUTSIDE OF TBG SHOWED LIKE DRILL MUD AND FLUID LEVEL AROUND 1500 ') SECURED WELL, SIFTN.</p>
05/27/2022	<p>5/27/2022</p> <p>HELD SAFETY MEETING, CSG AND TBG 0 PSI, FISH OUT PLUNGER AND BUMPER SPRING, ONLY ABOUT 100' IN TBG, WITH 60 JTS STILL IN THE HOLE, CONTINUE PULLING PIPE AND WAS FULL OF WATER AND THEN WAS MUD AND BIG CHUNKS OF COAL, SET A CONTAINER UNDER RIG FLOOR AND PULLED PIPE, TOTAL PIPE FROM THE WELL- 6',10',10' TBG SUBS, 139 JTS, SN, 1 JT, MS. (BOTTOM 40 JTS PLUG W/ MUDD, COAL, SOME FIBERS), TIH W/ BAILOR, 10 JTS IN BETWEEN, PICK UP EXTRA PIPE, TAG FILL AT 4460', W/142 JTS YB (DHPS), BAIL AND DIDN'T MAKE HOLE, TOH W/BAILER, BROUGHT 10 JTS FULL OF MUD AND ABOUT 6' OF DEBRI, TIH W/5 1/2" SCRAPER AND 15 STS, CLEAN UP AROUND THE WELL, SECURE WELL W/ PIPE RAMS AND LOCK, SIFTW.</p>
05/31/2022	<p>5/31/2022</p> <p>HELD SAFETY MEETING, CSG AND TBG -0 PSI, CONTINUE TRIPING IN W/SCRAPER, TAG SOMETHING SOFT AT 3966' AND WORKED THROUGH T/4218', WAS STILL GOING BUT VERY SLOW, TOH W/37 STS AND TBG WAS PLUG, TRIED TO PUMP AND DIDN'T MOVED, SWAB BACK ABOUT 700', TOH W/10 STS, SWAB AGAIN AS MUCH POSIBLE, TOH W/16 STS, TRIED TO SWAB AGAIN AND COULDN'T GET THE SWAB CUPS IN TO THE FLUID, TOH W/ REMAINING 7 STS AND SCRAPER, CATCH FLUID IN CONTAINER UNDER THE FLOOR. MAKE UP TOOLS, TIH W/ RBP, 125 JTS, SET RBP AT 3941', RELEASE RBP, PULL UP 5', LOAD CSG W/ 38 BBL, CIRCULATE THE WELL CLEANER W/ 113 BBL, PRESS TEST CSG, DIDN'T HOLD, INJECTION RATE TEST AT 500 PSI, 1.9 BBL/MIN, TOH W/ RETRIVING HEAD, SECURE WELL, CLOSE AND LOCK BLINDS.</p>
06/01/2022	<p>6/01/2022</p> <p>HELD SAFETY MEETING, CSG PRESS 0 PSI, TIH W/ PKR AND 31 STS, LOAD CSG W/ 22 BBL, CSG WAS GOOD, SET PKR 5 TIMES MORE AND FOUND HOLE FROM 3282' TO 3313', TOH W/ PKR, TIH W/ RETRIVING HEAD AND 125 JTS, COULDN'T LASH ON TO RBP, C/O ON TOP OF RBP, LASH ON TO RBP, RELEASED RBP, TOH W/ RBP, SECURE WELL, CLOSE AND LOCK BLIND RAMS. SIFTN.</p>



Job Summary for SAN JUAN 30-4 UNIT 30 PC - 3003907791

Well Maintenance-05/26/2022

06/02/2022	<p>6/02/2022</p> <p>HELD SAFETY MEETING, CSG PRESS 0 PSI, TIH W/CIBP AND 123 JTS, SET IT AT 3850', TOH W/ TBG. TIH W/30 STS FROM THE WELL, W/ 1 ST EACH TIME, LAY IT DOWN AND FLUSH IT W/WATER TO AN OPEN TOP TANK. TIH W/ CMR AND 104 JTS, SET IT AT 3274', LOAD TBG W/ 5 BBL AND INJECT 5 BBL AT 450 PSI, 1.5 BBL/MIN, LOAD UP CSG W/ 10 BBL AND PRESS TEST TO 500 PSI FOR 5 MIN, HELD GOOD. SECURE WELL, SIFN.</p>
06/03/2022	<p>6/03/2022</p> <p>CSG AND TBG PRESS 0 PSI, WAITED 1 HR ON CMT TRUCKS, SPOT IN TRUCKS, HELD SAFETY MEETING, PUMP 150 SKS-(FIRST 100 SKS W/1% CACL), SEE AN INCREASE OF PRESSURE FROM 540 PSI TO 610 PSI, STOP AND HESIITATE FOR 17 MIN, PUMP 50 SKS MORE, HESIITATE FOR 20 MIN, ATTEMPT TO PUMP/ PRESSURE UP TO 800 PSI, LET IT LEAK OFF TO 100 PSI AND PRESS UP TO 800 PSI, 3 TIMES MORE, PRESS UP LAST TIME TO 800 PSI AND STING OUT, REVERSE CIRC, TOTAL OF 32 BBL ON TILL FLUID WAS CLEAN, TOH W/ TBG AND STINGER, SECURE WELL, LOCK BLIND RAMS, SIFTW.</p>
06/06/2022	<p>6/06/2022</p> <p>CSG 0 PSI, HELD SAFETY MEETING, SPOT IN DC TRAILER, PICK UP 6 -3 ½'OD DC, W/DRILL BIT, XO, 49 STS, RU SWIVEL, PICK UP JT #99 CMT AT 3271', DRILL CMR TO 3275', FROM 9:15AM TO 11:45 AM, DRILL HART CEMENT TO 3322', CIRCULATE CLEAN, RD SWIVEL, PRESS TEST CSG TO 550 PSI TWICE, TOH W/TBG AND DRILL COLLARS, FILL UP CSG , SECURE WELL, SIFN.</p>
06/07/2022	<p>6/07/2022</p> <p>HELD SAFETY MEETING, RU WIRELINE AND DID A CBL FROM 3834' TO SURFACE, CEMENT WAS GOOD TO 250', RD WIRELINE, RU WELLCHECK AND PRESS TEST CSG (MIT), 560 PSI-540 PSI ON 30 MIN, TEST WAS APPROVED, RD WELLCHECK, TIH W/ DRILL BIT, 6 DRILL COLLARS, 58 STS, TAGGED AT 3845', RU SWIVEL ON JT#117, DRILL 5' OF FILL, DRILL PLUG FOR 50 MIN AND FALL, TAG PLUG AGAIN 4 JTS LOWER, DRILL ON IT FALL AGAIN, CHASE IT DOWN TO 3990', HANG BACK SWIVEL, TOH W/10 STS, SECURE WELL, SIFN.</p>
06/08/2022	<p>6/08/2022</p> <p>HELD SAFETY MEETING, CSG PRESS 0 PSI, TIH W/ 10 STS TAG FILL AT 4168', R U SWIVEL ON JT#127, CLEAN OUT AND PUSH CIBP TO BOTTOM TO 4465', (WAS CIRCULATING GOOD AT THE TOP PERFS, BUT ONES WE BEGAN TO CLEAN UP THE BOTTOM PERFS, BEGAN TO LOSE CIRCULATION, AFTER MAKING OUR LAST CONNECTION AND VERLY MADE TO BOTTOM AND LOST CIRCULATION). LAY DOWN 1 JT W/SWIVEL, HANG BACK SWIVEL, TOH W/ 67 STS, ONE JT, L D DRILL COLLARS. TIH W/BAILER 10 JTS IN BETWEEN, TAG FILL AT 4447', C/O TO 4460', TOH W/BAILER, BROUGHT OUT 2 JTS FULL OF FILL, CLEAN UP JTS. 2ND RUN TAG AT 4460' COULDN'T MAKE MORE HOLE, TOH, BROUGHT OUT ABOUT 15' OF FILL IN TBG, CLEAN UP JTS, SECURE WELL, SIFN.</p>

**Job Summary for SAN JUAN 30-4 UNIT 30 PC -
3003907791****Well Maintenance-05/26/2022**

06/09/2022	<p>6/09/2022 HELD SAFETY MEETING, CSG 0 PSI, TIH W/ BAILER, TAG FILL AT 4460', MADE 1.5 ', COULDN'T MAKE MORE HOLE, TOH W/ BAILER, BROUGH OUT ABOUT 6' OF FILL IN TBG. TIH W/PROD, 6' PS, NEW SN, 140 JTS DHPS, ADD 1 JT FOR SWABBING, R U SWAB TOOLS, IFL AT 2800', RECOVER 42 BBL OF WATER ON 22 SWAB RUNS, FLUID LEVEL DROP TO 4300', RUN TBG BROACH TO SN, R D SWAB TOOLS, LAY DOWN EXTRA JT, LAND TBG, EOT@4422'.30, SN@4415'.80, ND BOP, NU WH, RIG DOWN UNIT, CSG 20 PSI, LEFT TBG AND CSG EQUALIZING, SECURE WELL.</p> <p>70 GAL NON RIG FUEL NO VENTING, WELL WAS FULL OF FLUID. ****FINAL REPORT****</p>
------------	--

MorningStar Operating, LLC

San Juan 30-4 Unit 30 Rio Arriba County, NM

TD – 4,525'; PBTD – 4,470'

Surface Csg: 4 jts 9-5/8" 36# J-55
Setting Depth: 134'

Cement
80 sx regular cmt
40 ft³ Stratacrete
Circulated to surface

8-3/4" hole to 4,525'
Prod Csg: 114 jts 5-1/2" 15.5# J-55
Setting Depth: 4,524'

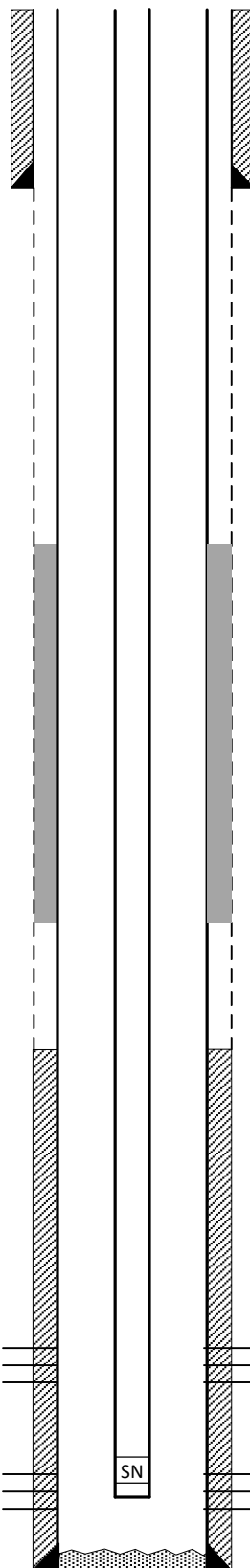
Cement
Lead 1: 60 sx regular cmt
Lead 2: 60 sx Pozmix
Lead 3: 30 ft³ Stratacrete
Tail: 50 sx neat cmt
Temp survey TOC - 3850'

Prepared by: JRyza
Date: 6/10/2022

KB = 12 ft
GL = 7,498 ft
API# 30-039-07791

Spud Date: 06/06/1959
Ready to Produce: 06/21/1959
Bailed fill: 07/05/2005
Casing repair: 05/26/2022

Formation tops
Nacimiento: 1,715'
Ojo Alamo: 3,578'
Kirtland: 3,810'
Fruitland: 4,105'
Pictured Cliffs: 4,235'



Prod Tbg 06/09/2022:

140 jts 2-3/8" 4.7# J-55 EUE tbg,
SN, 6' perf sub

EOT= 4,422', SN= 4416'

Casing Repair (06/2022):

Casing leak between 3282'-3313'
Sqz'd w/ 200 sx cement
CBL TOC ~1,960'

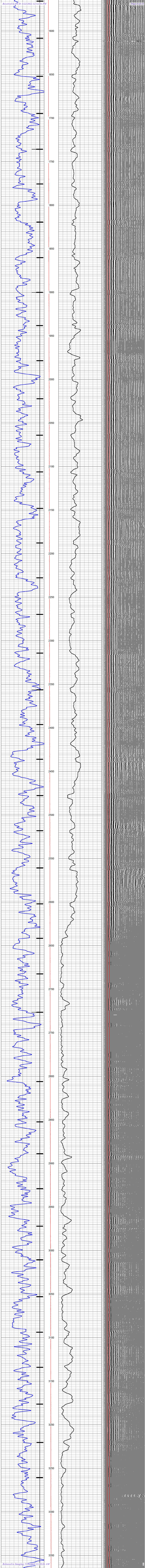
Perfs (Pictured Cliffs):

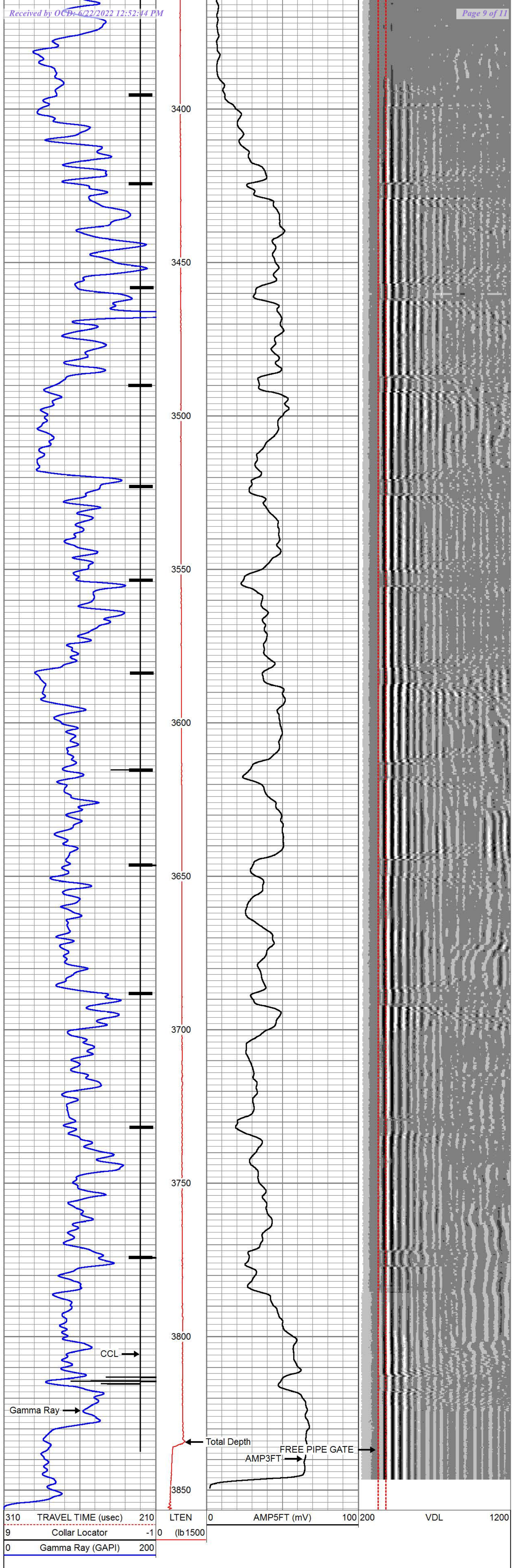
4,186'-4,204', 4,234'-74', Frac'd

Perfs (Pictured Cliffs):

4,412'-28', 4,440'-54', Frac'd

PBTD: 4,470'

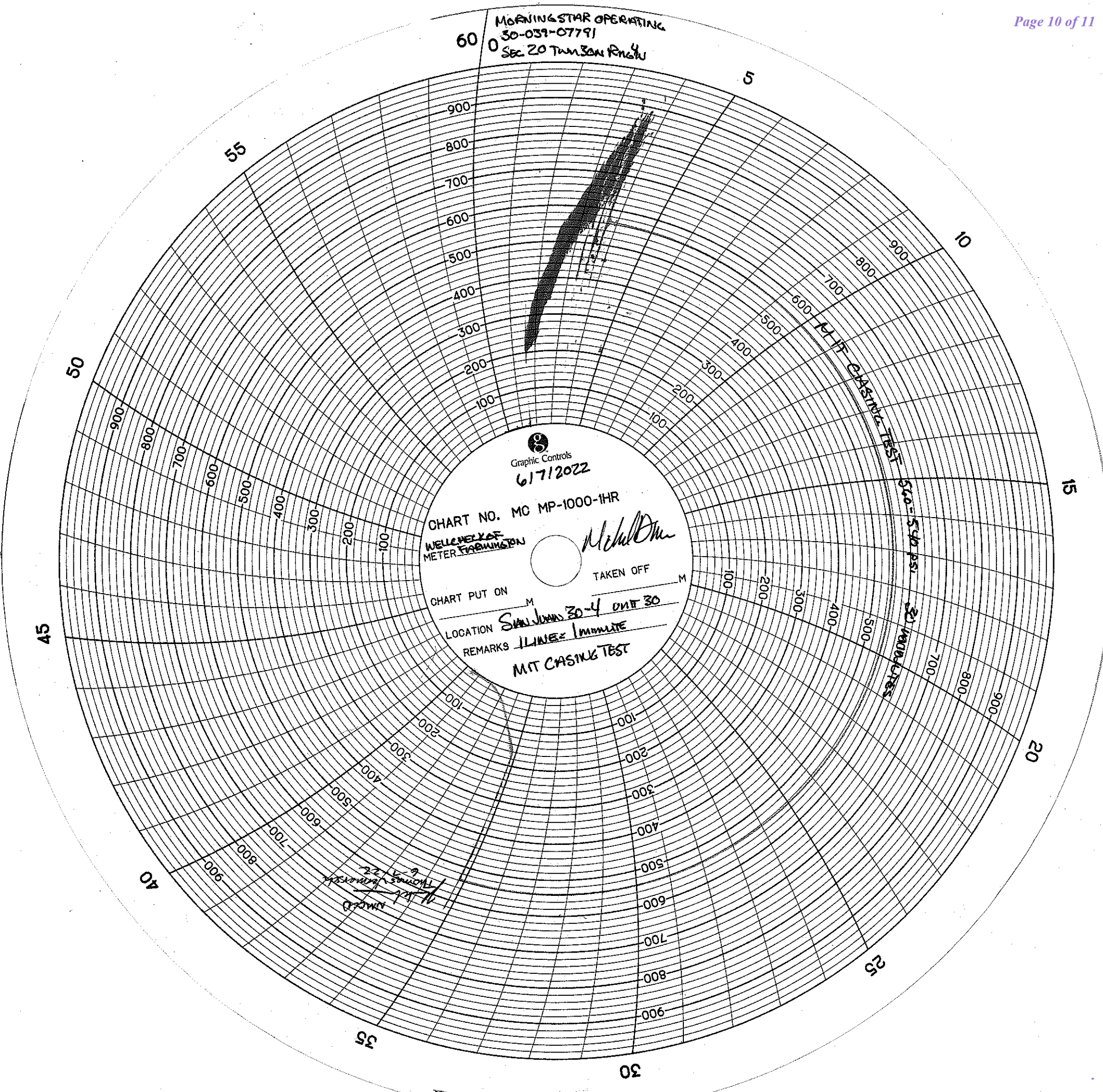




Calibration Report						
Database File:	morningstar.db					
Dataset Pathname:	pass11.2					
Dataset Creation:	Fri Jan 01 02:45:12 2010 by Calc SCH 110223					
Gamma Ray Calibration Report						
Serial Number:	1040					
Tool Model:	SNDX_3_13_GR					
Performed:	Fri Jan 01 01:27:16 2010					
Calibrator Value:	153.0	GAPI				
Background Reading:	105.7	cps				
Calibrator Reading:	659.9	cps				
Sensitivity:	0.4761	GAPI/cps				
Segmented Cement Bond Log Calibration Report						
Serial Number:	1084					
Tool Model:	007					
Calibration Casing Diameter:	5.500	in				
Calibration Depth:	2565.642	ft				
Master Calibration, performed Fri Jan 01 02:42:28 2010:						
	Raw (v)		Calibrated (mv)	Results		
	Zero	Cal	Zero	Cal	Gain	Offset
3FT	-0.030	0.011	2.000	71.921	1698.710	52.630
5FT	-0.001	0.087	2.000	71.921	797.434	2.404
S1	0.000	0.109	0.000	100.000	918.703	-0.012
S2	0.000	0.120	0.000	100.000	836.879	-0.010
S3	0.000	0.121	0.000	100.000	826.788	-0.012
S4	0.000	0.095	0.000	100.000	1051.220	-0.008
S5	0.000	0.070	0.000	100.000	1424.220	-0.009
S6	0.000	0.069	0.000	100.000	1446.140	-0.011
S7	0.000	0.065	0.000	100.000	1547.710	-0.012
S8	0.000	0.079	0.000	100.000	1269.440	-0.013

Sensor	Offset (ft)	Schematic	Description	Len (ft)	OD (in)	Wt (lb)
CCL	18.87		CHD-STNDRD (1) Standard Cable Head	1.00	1.69	10.00
			SNDX_CCL-SNDX_3_13_CCL (1037) CSS Gamma Ray/CCL (CCL Section)	1.92	3.13	11.02
			Probe Probe 2 3/4 Centralizer	2.88	2.75	20.00
WVF3FT	10.95		SNDX_RBT-007 (1084) Radial Bond Tool - Analog 3 1/8	9.47	3.13	140.00
WVFS1	10.95					
WVFS2	10.95					
WVFS3	10.95					
WVFS4	10.95					
WVFS5	10.95					
WVFS6	10.95					
WVFS7	10.95					
WVFS8	10.95					
WVF5FT	9.95					
GR	2.03		Probe Probe 2 3/4 Centralizer	2.88	2.75	20.00
			SNDX_GR-SNDX_3_13_GR (1040) Sondex Production Gamma Ray	2.94	3.13	22.05

Dataset: morningstar.db: field/well/run1/pass11.2
Total Length: 21.08 ft
Total Weight: 223.07 lb
O.D.: 3.13 in



Sante Fe Main Office
Phone: (505) 476-3441

General Information
Phone: (505) 629-6116

Online Phone Directory
<https://www.emnrd.nm.gov/oed/contact-us>

State of New Mexico
Energy, Minerals and Natural Resources
Oil Conservation Division
1220 S. St Francis Dr.
Santa Fe, NM 87505

CONDITIONS

Action 119572

CONDITIONS

Operator: MorningStar Operating LLC 400 W 7th St Fort Worth, TX 76102	OGRID: 330132
	Action Number: 119572
	Action Type: [C-103] Sub. Workover (C-103R)

CONDITIONS

Created By	Condition	Condition Date
andrew.fordyce	Please upload the post-squeeze CBL to OCD imaging using the form [UF-WL] EP Well Log Submission.	9/16/2025