

Santa Fe Main Office
Phone: (505) 476-3441
General Information
Phone: (505) 629-6116

State of New Mexico
Energy, Minerals and Natural Resources

Form C-103
Revised July 18, 2013

Online Phone Directory Visit:
<https://www.emnrd.nm.gov/ocd/contact-us/>

OIL CONSERVATION DIVISION
1220 South St. Francis Dr.
Santa Fe, NM 87505

SUNDRY NOTICES AND REPORTS ON WELLS (DO NOT USE THIS FORM FOR PROPOSALS TO DRILL OR TO DEEPEN OR PLUG BACK TO A DIFFERENT RESERVOIR. USE "APPLICATION FOR PERMIT" (FORM C-101) FOR SUCH PROPOSALS.) 1. Type of Well: Oil Well <input checked="" type="checkbox"/> Gas Well <input type="checkbox"/> Other <input type="checkbox"/>		WELL API NO. 30-025-43452 5. Indicate Type of Lease STATE <input type="checkbox"/> FEE <input checked="" type="checkbox"/> 6. State Oil & Gas Lease No.
2. Name of Operator Riley Permian Operating, LLC		7. Lease Name or Unit Agreement Name K2 State 18 8. Well Number 1H
3. Address of Operator 29 E Reno Suite 500 Oklahoma City, OK 73104		9. OGRID Number 372290 10. Pool name or Wildcat San Andres
4. Well Location Unit Letter <u>P</u> : <u>120</u> feet from the <u>S</u> line and <u>440</u> feet from the <u>E</u> line Section <u>18</u> Township <u>09S</u> Range <u>33E</u> NMPM County <u>Lea</u>		
11. Elevation (Show whether DR, RKB, RT, GR, etc.)		

12. Check Appropriate Box to Indicate Nature of Notice, Report or Other Data

NOTICE OF INTENTION TO: PERFORM REMEDIAL WORK <input type="checkbox"/> PLUG AND ABANDON <input type="checkbox"/> TEMPORARILY ABANDON <input type="checkbox"/> CHANGE PLANS <input type="checkbox"/> PULL OR ALTER CASING <input type="checkbox"/> MULTIPLE COMPL <input type="checkbox"/> DOWNHOLE COMMINGLE <input type="checkbox"/> CLOSED-LOOP SYSTEM <input type="checkbox"/> OTHER: <input type="checkbox"/>		SUBSEQUENT REPORT OF: REMEDIAL WORK <input type="checkbox"/> ALTERING CASING <input type="checkbox"/> COMMENCE DRILLING OPNS. <input type="checkbox"/> P AND A <input checked="" type="checkbox"/> CASING/CEMENT JOB <input type="checkbox"/> OTHER: <input type="checkbox"/>	
--	--	--	--

13. Describe proposed or completed operations. (Clearly state all pertinent details, and give pertinent dates, including estimated date of starting any proposed work). SEE RULE 19.15.7.14 NMAC. For Multiple Completions: Attach wellbore diagram of proposed completion or recompletion.

Wellhead Cut Off Date 7.17.25

SEE ATTACHED

Spud Date:

Rig Release Date:

I hereby certify that the information above is true and complete to the best of my knowledge and belief.

SIGNATURE Deb Fiorda TITLE SR. Regulatory Specialist DATE 7.23.25

Type or print name Deb Fiorda E-mail address: debfiorda@rileypermian.com PHONE: 405.754.6968

For State Use Only

APPROVED BY: _____ TITLE _____ DATE _____

Conditions of Approval (if any):

K2 18 STATE 1H – RILEY**START 7/14/25 -**

7.14.25

Began moving equip. to location. Crew spotted BB & Pulling unit.

Crew drove home.

I continue moving equipment.

I drove home.

7.15.25

Drove to location.

RU pulling unit & pump equipment.

ND flange, RU BOP & RD work floor.

RU AAA WL, RIH CBL tools, tagged @ 3672' & POOH CBL tools logging cmt.

RIH tbgs open ended.

Circulate well & test casing

Spot Plug #1.

Cement Sacks	YIELD	Slurry Volume Cu. Ft.	Slurry Wt. #/Gal	Type of Cement	EOT	TOC	Displace BBLS	TAG	Load Hole with Mud
25	1.32	33.00	14.8	C	3,670	3,510	14	-	-

Spot wrong plug. (AAA WS)

Circulate cmt out of well. (AAA WS)

POOH tbgs & secure well. (AAA WS)

Drove home.

7.16.25

Drove to location.

RIH tbgs.

Spot Plug #2.

Cement Sacks	YIELD	Slurry Volume Cu. Ft.	Slurry Wt. #/Gal	Type of Cement	EOT	TOC	Displace BBLS	TAG	Load Hole with Mud
25	1.32	33.00	14.8	C	3,213	3,051	12	-	-

LD tbgs for next plug.

Spot Plug #3.

Cement Sacks	YIELD	Slurry Volume Cu. Ft.	Slurry Wt. #/Gal	Type of Cement	EOT	TOC	Displace BBLS	TAG	Perforate By	Perforate Depth	Load Hole with Mud
25	1.32	33.00	14.8	C	2,457	2,279	9	2,290.00	-	-	5

WOC & TAG.

Tag plug & LD tbg for next plug.

Spot Plug #4.

Cement Sacks	YIELD	Slurry Volume Cu. Ft.	Slurry Wt. #/Gal	Type of Cement	EOT	TOC	Displace BBLS	TAG	Load Hole with Mud
25	1.32	33.00	14.8	C	1,953	1,791	7	- -	5

LD tbg for next plug.

Spot Plug #5.

Cement Sacks	YIELD	Slurry Volume Cu. Ft.	Slurry Wt. #/Gal	Type of Cement	EOT	TOC	Displace BBLS	TAG	Load Hole with Mud
47	1.32	62.04	14.8	C	504	205	1	- -	5

LD tbg for next plug, RU AAA WL, Perforate, RD WL.

Sqz Plug #6.

Cement Sacks	YIELD	Slurry Volume Cu. Ft.	Slurry Wt. #/Gal	Type of Cement	EOT	TOC	Displace BBLS	TAG	Perforate By	Perforate Depth	Load Hole with Mud
61	1.32	80.52	14.8	C	-	-	-	0'	AAA	200	10

Circulate 7" & 9 5/8 casing & secure equipment.

Drove home.

7.17.25

Drove to location.

RU work floor & ND BOP.

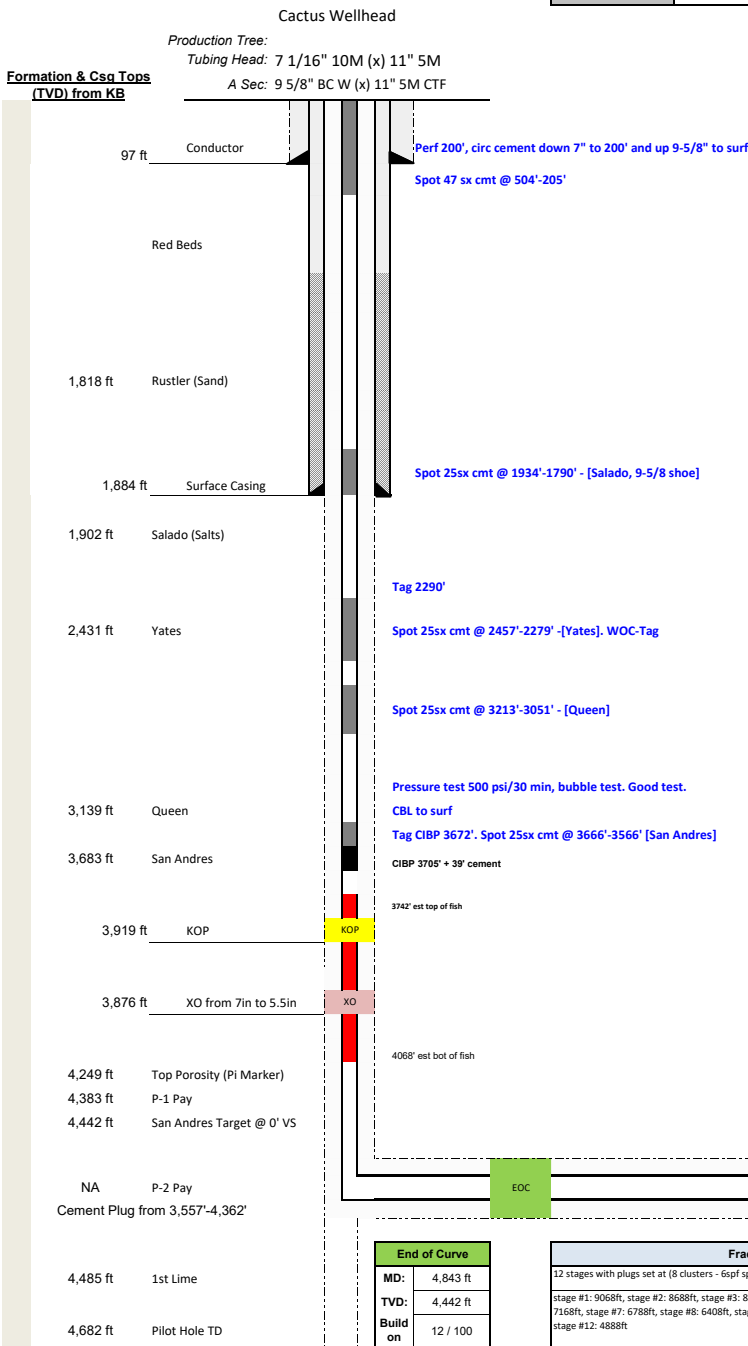
RD pulling unit, pump equipment & clean location.

Drove home.

Updated: Taylor Vincent 7/18/2025



F	Date	History			
Drill: 1/10/17 thru 1/29/17		Spud well on 1/10/17 with Norton #6. Drilled 12.25in hole to 1,890ft and set 5-8in csg @ 1,884ft. - Cement w/ 335bbls Allied light wt. class C + 54.5 bbl of class C premium. Displace w/ 20bbls FW+115bbl brine. Bump plug and floats help. 170bbls cement returned to surface. Full returns throughout job.			
		Drilled 9-3/4in pilot hole to a TD of 4,682ft. Took triple combo logs, sonic scanner and sidewall cores. Spot sidetrack cmt plug @ 3,578ft. Time drilled off plug w/ KOP @ 3,119ft and drilled curve and lateral. Reached Driller's TD of 9,201ft MD on 1/27/2017. Set 7in 329 L-80 tapered to 5-1/2in 238 L-80 csg @ 9,171ft MD. - Cement w/ 556bbls Leed of Halliburton EconoCem Class C + Tail: 461bbls NeoCem class C. Displace with displace with 10bbls sugar water+240 bbls FV w/ clayweb (KCL 8.4ppg). Bump plug and floats help. 150bbls of cement returned to surface. Full returns throughout job. Release Rig on 1/29/17.			
Complete: 3/1/2017 thru 3/31/17		3-14-17: Open Onto Toe vlt 3-14-17 thru 3-16-17: Frac 12 stages with Keane . Stage length of 380ft. 8 Cluster per stage and 6 spf. Total clean volume of 82k + pump down volumes is a TLR of 85k bbls. Total sand was 2.5mil lbs. 3-30-17 thru 3-31-17: Drill out plugs with a WO rig. No tight spots. 4.5in JZ bit. Had to use a rig assisted snubbing unit to come out of the hole. Well taking fluid entire DO. Well was died and did not need to flow before running ESP.			
Install ESP: 3/31/17 - 4/1/17		Install ESP and run tubing as per table shown below.			
Flowback on ESP: 4/1/2017		Flowback well. LTR remaining is 85k bbls			
Pull ESP / Fish LIH: 11/12/2018		Attempt to pull ESP. Only top pump recovered. The following is LIH: (2) esp, agh, intake, protector, motor, sensor, desander, no-go,8 fts of tailpipe. A total of 347ft. + 70ft of casing. Estimated depth of top of fish at 3,724ft.			
	5/1/2018	Change of operator: Rockfill Energy to Riley Permian			
	12/11/2019	Set CIBP at 3705', dump ball 6 sx (39') cls C on top. MIT performed and passed. Well TA'ed and expires 12/13/2024.			
	7/17/2025	Completed P&A			
Tubing Detail (top to bottom)					
	Joints	Description	Footage	ID	Depth
		KB	12		16
		7" CIBP, plus 6 sx Cls C cement			3,665
		Top of Fish			
	1	Pump: 400 Series D3500N 89 Stage Pump	22		3,724
	1	Pump: 400 Series D3500N 89 Stage Pump	22		3,746
	1	AGH (Gas Handler) D20-60	6		3,768
	1	INTAKE / VGSA	3		3,774
	1	Protector	8		3,782
	1	Motor: 456 OD: 270 HP	31.5		3,814
	1	Sensor: XT 150 Type 0	2		3,816
	1	ESP Cable #4 Flat - to surface			3,816
	7	Cap string Inconel 862- 3/8in. to surface			3,816
	1	Cyclone "De-Sander" - 7.0in	2.8		3,818
	1	ESP No Go Assembly	1.5		3,820
	8	86ty joint of 2-7/8in 6.50# L-80 EUE 8rd SMLS tubing	248		4,067
	1	Bull plug	1		4,068
	Pump Intake @		Sensor @		
	EOT @				



Sante Fe Main Office
Phone: (505) 476-3441

General Information
Phone: (505) 629-6116

Online Phone Directory
<https://www.emnrd.nm.gov/oed/contact-us>

State of New Mexico
Energy, Minerals and Natural Resources
Oil Conservation Division
1220 S. St Francis Dr.
Santa Fe, NM 87505

CONDITIONS

Action 495604

CONDITIONS

Operator: RILEY PERMIAN OPERATING COMPANY, LLC 29 E Reno Avenue, Suite 500 Oklahoma City, OK 73104	OGRID: 372290
	Action Number: 495604
	Action Type: [C-103] Sub. Plugging (C-103P)

CONDITIONS

Created By	Condition	Condition Date
gcordero	Clean Location in accordance with 19.15.25.10 NMAC.	9/17/2025
gcordero	Submit C-103Q within one year of plugging.	9/17/2025