

Well Name: OLD TRADING POST	Well Location: T26N / R14W / SEC 10 / SESE / 36.49748 / -108.3089	County or Parish/State: SAN JUAN / NM
Well Number: 1	Type of Well: OIL WELL	Allottee or Tribe Name: SHIPROCK
Lease Number: 14206032085	Unit or CA Name:	Unit or CA Number:
US Well Number: 3004505915	Operator: CROSS CREEK CORPORATION	

Subsequent Report

Sundry ID: 2873875	
Type of Submission: Subsequent Report	Type of Action: Plug and Abandonment
Date Sundry Submitted: 09/16/2025	Time Sundry Submitted: 02:00
Date Operation Actually Began: 08/18/2025	

Actual Procedure: Well plugged by the Navajo Nation, contractor Walsh Engineering and Production. Work completed August 28, 2025.

SR Attachments

Actual Procedure

SR_ABD_WBS_Old_Trading_Post_1_3004505915_20250916135823.pdf

SR_ABD_DAILY_Old_Trading_Post_1_3004505915_20250916135823.pdf

BLM Point of Contact

BLM POC Name: KENNETH G RENNICK	BLM POC Title: Petroleum Engineer
BLM POC Phone: 5055647742	BLM POC Email Address: krennick@blm.gov
Disposition: Accepted	Disposition Date: 09/16/2025
Signature: Kenneth Rennick	

Daily Events

8.18 - SICP=25PSI/SITP=0PSI. Moved in equipment. Very sandy, having trouble getting equipment to location. Having to have rig up truck drag equipment to location. Trucks having trouble dragging in equipment. Called for blade operator and watering road to help pack down sand. Got rig to location. Spotted rig mats for rig placement. Got most of equipment on location. Got rig spotted. Will stand derrick up in the morning. Secured the well for the evening. Crew off location at 20:00.

8.19 - SICP=PSI/SITP=PSI. JHA with crew. Continue RU. Derrick up at 08:15. Attempt to unseat the pump. Pulled to 15K, dropped to 12K. LD 3 rods and installed polished rod and stuffing box. Heavy paraffin. RU Hotoil Truck. Pumped 40 bbls of 230-deg treated water down casing and then switched to tbg. Got appx 2 bbls pumped and caught pressure. Worked rods while attempting to pump hot water down tbg. Switched to casing again and caught pressure. Continued poh laying down rods. Got out with 32 rods and started pulling dry. Pumped remaining 17 bbls of 230-deg treated water down tbg. Continued laying down rods. Got out with 104 guided 3/4" rods, 79 plain 3/4" rods and pump. Secured the well for the evening. Crew off location at 19:00

8.20 - SICP/SITP=0PSI on Vacuum. JHA with crew. PU on tbg hanger (no Tac). NU BOP. POH laying down production tbg. Got out with 165 jts, sn, perf sub and mud anchor. MU 6-1/4 blade bit, casing scraper for 7" 20# casing, 3-1/2 Reg x 2-3/8 Eu 8RD float sub on 2-3/8 BB work string. Tally and rabbit on the way in. Got 104 jts in. EOB at 3200' Secured the well for the evening. Crew off location at 19:00.

8.21 - SICP/SITP=PSI. JHA with crew. Function test BOP. Continue TIH with bit and scraper. Ran scraper to 5010'. POH with bit and scraper. Laid down bit and scraper. TIH with 7" CICR to 4968'. Set CICR at 4968'. Attempt to test down tbg to 1000 psi. Held. Stung out of retainer and roll hole with fresh water. Pumped a total of 220 bbls and shut down. (Got back appx 100 bbls of oil returns). POH with setting tool. LD setting tool. RU WL. TIH with CBL tool. Completed CBL. RD WL. Secured the well for the night. Crew off location at 20:30. NNMinerals Inspector Val Uentillie on location to witness operation.

8.22 - SICP=0PSI. JHA with crew. Function test BOP. TIH with setting tool to CICR at 4968'. Stung into retainer. Attempt to test casing to 500 psi. Lost 150 psi in 5 minutes. Test failed.

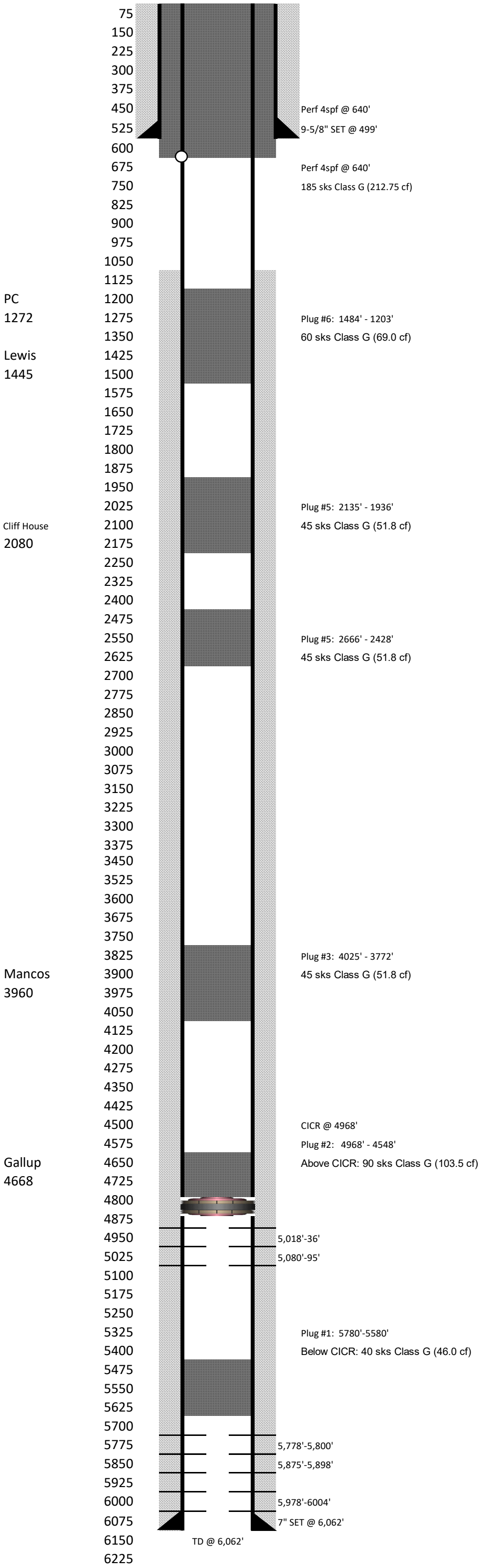
Stung into retainer and est inj rate of 1.5 bpm @ 560psi. M&P 40sk, 1,15, 16.2#, 46 cuft, 8.2 bbls class G neat cement. Displaced with 44bbls of water. Bottm of plug at 5780' to 5580' TOC. POH with setting tool. LD setting tool and TIH with tag sub and tbg to 4968'. M&P 90 sks, 103.5 cuft, 18.4 bbls, 15.8# class G Neat cement. Displaced with 17.5 bbls of water. Plug from 4968' to 4511'. POH to 4250' and reverse circulate clean with 20 bbls of water. Got back appx 1 bbl of dirty water. WOC. TIH and tag TOC @ 4548', 117' above Gallup top at 4665'. POH laying down tbg to 4015'. Secured the well for the weekend. Crew off location at 18:00. NNMinerals Inspector Val Uentillie on location to witness operation.

8.25 - SICP/SITP=0PSI. JHA with rig crew. Function test BOP. Break circulation and pressure test casing. Attempted pressure test to 500 psi, lost 200psi in 2 minutes. M&P 45 sks, 51.8 cuft, 1.15 yield, 15.9#, 9.2 bbls from 4025' to 3798' TOC. Displaced with 14.7 bbls of water. LD 7 jts and stand back 3 stands. Reverse circulate clean with 17 bbls of water, got back appx 1/4 bbls of cmt. WOC. TIH and tagged TOC at 3772'. POH laying down tbg to 2666'. Broke circulation eith 3 bbls. Attempted to pressure test casing. Same results as before. No test. M&P 45sks, 51.8 cuft, 9.2 bbls, 15.8# class "G" neat cement from 2666' to 2439' TOC. Displaced with 9.4 bbls of water. POH laying down 7 jts and stand back 3 stds(6 jts). Reverse circulated clean with 13 bbls. Got back very little dirty water. WOC. Secured the well for the day. Crew off location at 14:00. NNMinerals Inspector Val Uentillie on location to witness operation.

8.26 - SICP/SITP=0PSI. JHA with crew. Function test BOP. TIH and tag cement. Tagged TOC @ 2428'. POH laying down tbg to 2135'. EOT@2135', Established circulation with 4 bbls of water. Closed csg valve and attempt to pressure test casing to 500psi. Lost 200 psi in 1 minute. Opened casing valve. M&P 45 sks, 51.8 cuft, 9.2 bbls, 15.9#, 1.15 yield of class G neat cement from 2135' to 1908' TOC. Displaced with 7.4 bbls of water. LD 7jts and stand back 3 stands (6 jts). EOT at 1727' Reverse circulate clean with 9 bbls of water. WOC. TIH and tagged TOC@1936'. POH to 1484'. Est circulation. Attempted to pressure test casing to 500 psi. Lost 200 psi in 1 minute. M&P 60 sks, 1.15 yield, 16.1#, 69 cuft, 12.3 bbls of class G neat cement from 1484'to 1180' TOC. Displaced with 4.5 bbls of water. POH laying down tbg to 981'. Reverse circulate clean. WOC. TIH and tagged TOC @ 1203'. POH laying down remaining tubing. Prep to run WL in the morning. Secured the well for the evening. Crew off location at 18:00. NNMinerals Inspector Johnnie Begaye on location to witness operation.

8.27 - SICP=0PSI. BradenHead=30PSI. JHA with crew. Function test BOP. Bled bradenhead to wash pit. RU TWG. RIH with perf guns and shoot 4 holes at 640'. POH with perf guns, verified all shots fired. Attempt to est injection rate and circulation out of bradenhead valve. Caught pressure with 14 bbls of water pumped. Slight blow out of bradenhead. 1/2 bpm at 400 psi. Increased pressure to 700 psi. Pressure started coming down. Increased rate to 4.5 bpm at 310psi, At 32 bbls total pumped got circulation to wash pit. Rate at 2 bpm at 90 psi. SD. ND BOP and installed tbg head. Established injection rate and circulation out of bradenhead. Injection rate at 2bpm at 150psi. Got circulation to wash pit. M&P 185 sks, 212.75cuft, 37.9 bbls class G neat cement, at 160sks, 184 cuft, 32.8 bbls when we lost circulation to pi and pressured up to PSI. Shut in casing. WOC. Contacted engineering as well as BLM Engineer with results. Cut off wellhead from the casing strings. TOC in 7x9-5/8 at 10'7". TOC in 7" is 6". Welded DHM to the casing strings. Topped of casing strings and cellar with 60 sks, 69 cuft, 12.3 bbls of class G neat cement. RD equipment. Laid down the derrick. Crew off location at 16:00

8.28 - Moved all equipment off location. Cleaned up location. Rig off location at 09:30. Equipment left on location is as follows: Cement base from pumping unit, Guard frame from pumping unit, Expanded metal cellar covers and 4 anchors.



PREPARED BY: J. WRIGHT 10/05/23
LAST UPDATE:

WELL:	OLD TRADING POST #1	COUNTY:	SAN JUAN	API #:	30-045-05915
FIELD:	GALLUP	STATE:	NM	SPUD:	5/14/1958
FORMATION:	GALLUP	LEASE:	14-20-0603-2085	P&A	8/28/2025
LOCATION:	790' FSL & 790' FEL	SECTION:	10	TOWNSHIP:	26N
TD:	6,062'	PBTD:	5,728'	ELEV GL:	6,203'
				ELEV-RKB:	
				RANGE:	14W

CASING RECORD

8.18 - SICP=25PSI/SITP=0PSI. Moved in equipment. Very sandy, having trouble getting equipment to location. Having to have rig up truck drag equipment to location. Trucks having trouble dragging in equipment. Called for blade operator and watering road to help pack down sand. Got rig to location. Spotted rig mats for rig placement. Got most of equipment on location. Got rig spotted. Will stand derrick up in the morning. Secured the well for the evening. Crew off location at 20:00.

8.19 - SICP=PSI/SITP=PSI. JHA with crew. Continue RU. Derrick up at 08:15. Attempt to unseat the pump. Pulled to 15K, dropped to 12K. LD 3 rods and installed polished rod and stuffing box. Heavy paraffin. RU Hotoil Truck. Pumped 40 bbls of 230-deg treated water down casing and then switched to tbg. Got appx 2 bbls pumped and caught pressure. Worked rods whil attempting to pump hot water down tbg. Switched to casing again and caught pressure. Continued poh laying down rods. Got out with 32 rods and started pulling dry. Pumped remaining 17 bbls of 230-deg treated water down tbg. Continued laying down rods. Got out with 104 guided 3/4" rods, 79 plain 3/4" rods and pump. Secured the well for the evening. Crew off location at 19:00

8.20 - SICP/SITP=0PSI on Vacuum. JHA with crew. PU on tbg hanger (no Tac). NU BOP. POH laying down production tbg. Got out with 165 jts, sn, perf sub and mud anchor. MU 6-1/4 blade bit, casing scraper for 7" 20# casing, 3-1/2 Reg x 2-3/8 Eu 8RD float sub on 2-3/8 BB work string. Tally and rabbit on the way in. Got 104 jts in. EOB at 3200' Secured the well for the evening. Crew off location at 19:00.

8.21 - SICP/SITP=PSI. JHA with crew. Function test BOP. Continue TIH with bit and scraper. Ran scraper to 5010'. POH with bit and scraper. Laid down bit and scraper. TIH with 7" CICR to 4968'. Set CICR at 4968'. Attempt to test down tbg to 1000 psi. Held. Stung out of retainer and roll hole with fresh water. Pumped a total of 220 bbls and shut down. (Got back appx 100 bbls of oil returns). POH with setting tool. LD setting tool. RU WL. TIH with CBL tool. Completed CBL. RD WL. Secured the well for the night. Crew off location at 20:30. NNMinerals Inspector Val Uentillie on location to witness operation.

8.22 - SICP=0PSI. JHA with crew. Function test BOP. TIH with setting tool to CICR at 4968'. Stung into retainer. Attempt to test casing to 500 psi. Lost 150 psi in 5 minutes. Test failed. Stung into retainer and est inj rate of 1.5 bpm @ 560psi. M&P 40sk, 1,15, 16.2#, 46 cuft, 8.2 bbls class G neat cement. Displaced with 44bbls of water. Bottm of plug at 5780' to 5580' TOC. POH with setting tool. LD setting tool and TIH with tag sub and tbg to 4968'. M&P 90 sks, 103.5 cuft, 18.4 bbls, 15.8# class G Neat cement. Displaced with 17.5 bbls of water. Plug from 4968' to 4511'. POH to 4250' and reverse circulate clean with 20 bbls of water. Got back appx 1 bbl of dirty water. WOC. TIH and tag TOC @ 4548', 117' above Gallup top at 4665'. POH laying down tbg to 4015'. Secured the well for the weekend. Crew off location at 18:00. NNMinerals Inspector Val Uentillie on location to witness operation.

8.25 - SICP/SITP=0PSI. JHA with rig crew. Function test BOP. Break circulation and pressure test casing. Attempted pressure test to 500 psi, lost 200psi in 2 minutes. M&P 45 sks, 51.8 cuft, 1.15 yield, 15.9#, 9.2 bbls from 4025' to 3798' TOC. Displaced with 14.7 bbls of water. LD 7 jts and stand back 3 stands. Reverse circulate clean with 17 bbls of water, got back appx 1/4 bbls of cmt. WOC. TIH and tagged TOC at 3772'. POH laying down tbg to 2666'. Broke circulation eith 3 bbls. Attempted to pressure test casing. Same results as before. No test. M&P 45sks, 51.8 cuft, 9.2 bbls, 15.8# class "G" neat cement from 2666' to 2439' TOC. Displaced with 9.4 bbls of water. POH laying down 7 jts and stand back 3 stds(6 jts). Reverse circulated clean with 13 bbls. Got back very little dirty water. WOC. Secured the well for the day. Crew off location at 14:00. NNMinerals Inspector Val Uentillie on location to witness operation.

8.26 - SICP/SITP=0PSI. JHA with crew. Function test BOP. TIH and tag cement. Tagged TOC @ 2428'. POH laying down tbg to 2135'. EOT@2135', Established circulation with 4 bbls of water. Closed csg valve and attempt to pressure test casing to 500psi. Lost 200 psi in 1 minute. Opened casing valve. M&P 45 sks, 51.8 cuft, 9.2 bbls, 15.9#, 1.15 yield of class G neat cement from 2135' to 1908' TOC. Displaced with 7.4 bbls of water. LD 7jts and stand back 3 stands (6 jts). EOT at 1727' Reverse circulate clean with 9 bbls of water. WOC. TIH and tagged TOC@1936'. POH to 1484'. Est circulation. Attempted to pressure test casing to 500 psi. Lost 200 psi in 1 minute. M&P 60 sks, 1.15 yield, 16.1#, 69 cuft, 12.3 bbls of class G neat cement from 1484'to 1180' TOC. Displaced with 4.5 bbls of water. POH laying down tbg to 981'. Reverse circulate clean. WOC. TIH and tagged TOC @ 1203'. POH laying down remaining tubing. Prep to run WL in the morning. Secured the well for the evening. Crew off location at 18:00. NNMinerals Inspector Johnnie Begaye on location to witness operation.

8.27 - SICP=0PSI. BradenHead=30PSI. JHA with crew. Function test BOP. Bled bradenhead to wash pit. RU TWG. RIH with perf guns and shoot 4 holes at 640'. POH with perf guns, verified all shots fired. Attempt to est injection rate and circulation out of bradenhead valve. Caught pressure with 14 bbls of water pumped. Slight blow out of bradenhead. 1/2 bpm at 400 psi. Increased pressure to 700 psi. Pressure started coming down. Increased rate to 4.5 bpm at 310psi, At 32 bbls total pumped got circulation to wash pit. Rate at 2 bpm at 90 psi. SD. ND BOP and installed tbg head. Established injection rate and circulation out of bradenhead. Injection rate at 2bpm at 150psi. Got circulation to wash pit. M&P 185 sks, 212.75cuft, 37.9 bbls class G neat cement, at 160sks, 184 cuft, 32.8 bbls when we lost circulation to pi and pressured up to PSI. Shut in casing. WOC. Contacted engineering as well as BLM Engineer with results. Cut off wellhead from the casing strings. TOC in 7x9-5/8 at 10'7". TOC in 7" is 6". Welded DHM to the casing strings. Topped of casing strings and cellar with 60 sks, 69 cuft, 12.3 bbls of class G neat cement. RD equipment. Laid down the derrick. Crew off location at 16:00

8.28 - Moved all equipment off location. Cleaned up location. Rig off location at 09:30. Equipment left on location is as follows: Cement base from pumping unit, Guard frame from pumping unit, Expanded metal cellar covers and 4 anchors.

Sante Fe Main Office
Phone: (505) 476-3441

General Information
Phone: (505) 629-6116

Online Phone Directory
<https://www.emnrd.nm.gov/oed/contact-us>

State of New Mexico
Energy, Minerals and Natural Resources
Oil Conservation Division
1220 S. St Francis Dr.
Santa Fe, NM 87505

CONDITIONS

Action 506800

CONDITIONS

Operator: CROSS CREEK CORP P.O. Box 1957 Duncan, OK 73534	OGRID: 5371
	Action Number: 506800
	Action Type: [C-103] Sub. Plugging (C-103P)

CONDITIONS

Created By	Condition	Condition Date
loren.diede	Accepted for Record.	9/18/2025