

Well Name: BIG EDDY UNIT	Well Location: T22S / R28E / SEC 6 / NWSE / 32.4186003 / -104.124568	County or Parish/State: EDDY / NM
Well Number: 148	Type of Well: CONVENTIONAL GAS WELL	Allottee or Tribe Name:
Lease Number: NMLC060853A	Unit or CA Name:	Unit or CA Number: NMNM119166
US Well Number: 3001535146	Operator: XTO PERMIAN OPERATING LLC	

Subsequent Report

Sundry ID: 2872136

Type of Submission: Subsequent Report

Date Sundry Submitted: 09/05/2025

Date Operation Actually Began: 06/17/2025

Type of Action: Plug and Abandonment

Time Sundry Submitted: 12:50

Actual Procedure: XTO Permian Operating LLC, has P&A'd the above mentioned well per the attached P&A Summary Report and WBD. CBL has also been submitted.

SR Attachments

Actual Procedure

- BEU_148_CBL_6_26_25_20250905124824.pdf
- Big_Eddy_Unit_148_Sbsq_P_A_Summ_Rpt___WBD_20250905124410.pdf

Received by OCD: 9/11/2025 10:40:08 AM

Page 2 of 6

Well Name: BIG EDDY UNIT	Well Location: T22S / R28E / SEC 6 / NWSE / 32.4186003 / -104.124568	County or Parish/State: EDDY / NM
Well Number: 148	Type of Well: CONVENTIONAL GAS WELL	Allottee or Tribe Name:
Lease Number: NMLC060853A	Unit or CA Name:	Unit or CA Number: NMNM119166
US Well Number: 3001535146	Operator: XTO PERMIAN OPERATING LLC	

Operator

I certify that the foregoing is true and correct. Title 18 U.S.C. Section 1001 and Title 43 U.S.C. Section 1212, make it a crime for any person knowingly and willfully to make to any department or agency of the United States any false, fictitious or fraudulent statements or representations as to any matter within its jurisdiction. Electronic submission of Sundry Notices through this system satisfies regulations requiring a

Operator Electronic Signature: SHERRY MORROW	Signed on: SEP 05, 2025 12:50 PM
Name: XTO PERMIAN OPERATING LLC	
Title: Regulatory Analyst	
Street Address: 6401 HOLIDAY HILL ROAD BLDG 5	
City: MIDLAND	State: TX
Phone: (432) 218-3671	
Email address: SHERRY.MORROW@EXXONMOBIL.COM	

Field

Representative Name:		
Street Address:		
City:	State:	Zip:
Phone:		
Email address:		

BLM Point of Contact

BLM POC Name: JAMES A AMOS	BLM POC Title: Acting Assistant Field Manager
BLM POC Phone: 5752345927	BLM POC Email Address: JAMOS@BLM.GOV

Disposition: Accepted	Disposition Date: 09/09/2025
Signature: James A Amos	

Big Eddy Unit 148
API Number 30-015-35146
P&A Summary Report

6/17/25: Kill Well. MIRU Braided line. RIH w 1.90" fishing tools @ 11,650' (pkr @ 11,604'). POOH w tools. RDMO Braided line.

6/18/25: Bleed off pressure. Pumped 50 bbls down Tbg, 100bbls down Csg. Well on vacuum. ND WH. NU & PT BOP. Good. MIRU Power Swivel. Tried to release packer, no luck. RDMO. SW SDFN.

6/19/25: MIRU BLU. RIH w 2.34" Cap String Catcher. Latched onto CT line, work it. Pumped 70 Bbls down Tbg. Tool slipped off 3 times. POOH w tools. RIH w 2.34" overshot dressed with 1/4" slips. Latched onto parted CT line again and work it for a few hours. Pumped 5 Gall of pipe on pipe & flushed with 65 Bbls. Kept on working it until something came loose. POOH w tools. Did not get anything. RDMO braided line unit. Released On/Off tool. TOH w 224 jnts 2-7/8" EUE L80 Tbg. Leave 130 jnts in hole. EOT @ 4,200'. SW SDFN.

6/20/25: TOH w 131 jnts of 2-7/8" EUE L80 Tbg. LD On/Off tool. MU BHA as follows: Screw grab, XO, stop, XO. TTOF @ 1,590'. TOH w Tbg and BHA. Did not get anything on this run. TIH w Tbg & BHA. TTOF @ 1,590'. Work it CT line. Parted and tried again. Feel some dragging. TOH w Tbg & BHA. Had 10' wrapped around screw grab. Secured well. SDFN.

6/21/25: Cont TOH w Tbg & CT line. Got 60'. MU & TIH w 54 jnts of 2-7/8" EUE L80. TTOF @ 1,762' FS. TOH w Tbg & BHA. Recovered 6' of CT line. TIH w 56 jnts of 2-7/8" EUE L80 Tbg & BHA. TTOF @ 1,827'. Work top of fish. TOH w Tbg & BHA. Came out with 35'. TIH w 58 jnts of 2-7/8" Tbg & BHA. TTOF @ 1,893' FS. TOH w 58 jnts. Installed banding material every 8 inches across fishing tool. Secured CT line and well. SDFN.

6/22/25: MU & TIH w 50 jnts of 2-7/8" EUE L80. TTOF @ 1,610' FS. TOH w Tbg & BHA. Recovered 40' of CT line. TIH w Tbg & BHA. TTOF @ 1,640'. Work top of fish. TOH w Tbg & BHA. Recovered 260' of CT line. Work fish. TOH w 56 jnts. Leave 12 jnts in hole. EOT @ 400'. Secure well. SDFN.

6/23/25: MIRU Capillary Unit. POOH w CT line. Recovered 9,550'. RDMO capillary unit. Secure well. SDFN.

6/24/25: MIRU WLU. RIH w 4.70" GRJB @ 8,000'. POOH w GRJB. RBIH w 4.65" GRJB. TTOF @ 9,450'. POOH w tools. RDMO WLU. MU BHA as follows: Screw grab, XO, drain sub. 1 jnt 2-7/8" EUE L80 Tbg, XO, 4-3/4" stop ring, LBS, jar, XO. TIH w WS Tbg and TTOF w 293 jnts @ 9,612' FS. Chase it to bttm w 354 jnts @ 11,592' FS. TOH w 90 jnts. Would drag 10 - 30 points coming out. EOT w 264 jnts @ 8,660' FS. Secure well. SDFN.

6/25/25: Cont TOH w Tbg & BHA. Pulled 264 jnts 2-7/8" EUE L80 Tbg. LD BHA. Rec 350' CT line. MIRU WLU. RIH w 4.65" GRJB. TTOF @ 11,591' FS. POOH w tools. RIH & set CIBP @ 11,580' FS. POOH w setting tool. RDMO WLU. Load WB w 264Bbls & PT @ 550psi, 30 min, held. SW SDFN.

6/26/25: RU WLU. Ran CBL to surface. Dump bail 35' of class H cmt on top of CBL. TIH w 2-7/8" POP & production Tbg. Ran 54 jnts. PT @ 1,100psi, held. Cont TIH, EOT w 144 jnts @ 4,700'. PT again. Test failed. POOH w 68 jnts. Found hole on 76 (originally 278 jnts @ 9,100' from surface, 2,504' from pkr). TIH Leave 170 jnts in the hole. EOT @ 5,550' FS. PT @ 1,200psi, held. SW SDFN.

6/27/25: Cont TIH w 180 jnts 2-7/8" EUE L80 Tbg. Ran 348 jnts total. EOT @ 11,363'. Load Tbg and PT @ 1,200psi 30min, held. Burst plug/disk @ 1,700psi and reverse circulate WB w 65 Bbls of PW RD work floor. Installed Tbg hanger. ND BOP. NU WH. Installed 10k flange. Nite cap w needle valve on top. SW.

7/19/25: MIRU.

7/20/25: N/D well head and N/U 10k x 5k spool, 7 1/16" BOP. Torque and test all equipment. Low to 250 psi held, High at 3,000 psi held. Pick up 3 jts and tag TOC @ 11,550'. Circulate hole 270 bbls bw with gel. Spot 147 sxs of 16.4 class H slurry – cmt plg. Pooh with 70 jts 2 7/8" j 55 tubing. Reverse out 65 bbls brine water. SW SDFN.

7/21/25: RIH 30 jts 2 7/8" tubing, Tagged TOC@ 10,281'. BLM witnessed tag. Pooh with 28 jts 2 7/8" tubing prepped for second plug. EOT @ 9,378'. Spot- 185 sxs class h 16.4 slurry, (BLM witness weight). Displaced 45.6 bbls brine. Pooh w/ 70 jts 2 7/8" tubing. EOT@7068' Reverse out with brine water. Wait on Cement. Pooh laying down 112 jts 2 7/8" tbg. Rih w 70 jts and tag TOC @7866'. Secure well. SDFN.

7/22/25: Spot 55 sxs class c 14.8 slurry, EOT @ 6104'. TOH w/170 jts 2 7/8" to derrick. BOP Closing drill. WOC 4hrs. TOH L/D 71 jts 2 7/8" tbg. TIH w 5 1/2" AD1 packer & 96 jts tbg. SW SDFN.

7/23/25: Tag TOC @ 5565'. Pull up to 2877', set packer- MIRU Wireline, Perforate @ 4500' w/ 1 11/16" strip, 4 shots, Rig down WL. , Pumped 50 bbls brine- caught circulation. Spotted 380 sxs class C cement 14.8# Slurry. Displaced 24.6 bbls brine. Wash up. (Displaced Cement to approx 3225'). SW SDFN.

7/24/25: RIh and tag TOC@ 3210'. Pooh with Laying down 47 jts 2 7/8" tubing on racks, set packer with 51 jts @1657'. MIRU WL – RIH and perforate @ 3200', 4 shot with 1 11/16" gun. RDMO WL. Pump 50 bbls establish injection rate. 1.2 bbls min @ 700 psi. Squeeze 380 sxs of Class C 14.8 slurry, displace with 16.4 bbls brine. SW SDFN.

7/25/25: TIH- TTOC @ 1926'. Pooh laying down 144 jts 2 7/8" tubing. Set packer at 65'. MIRU, RIh and perforate casing @ 800', RDMO. Circulate 238 sxs class c cement 14.8 slurry to surface. Secured well.

7/26/25: RDMO.

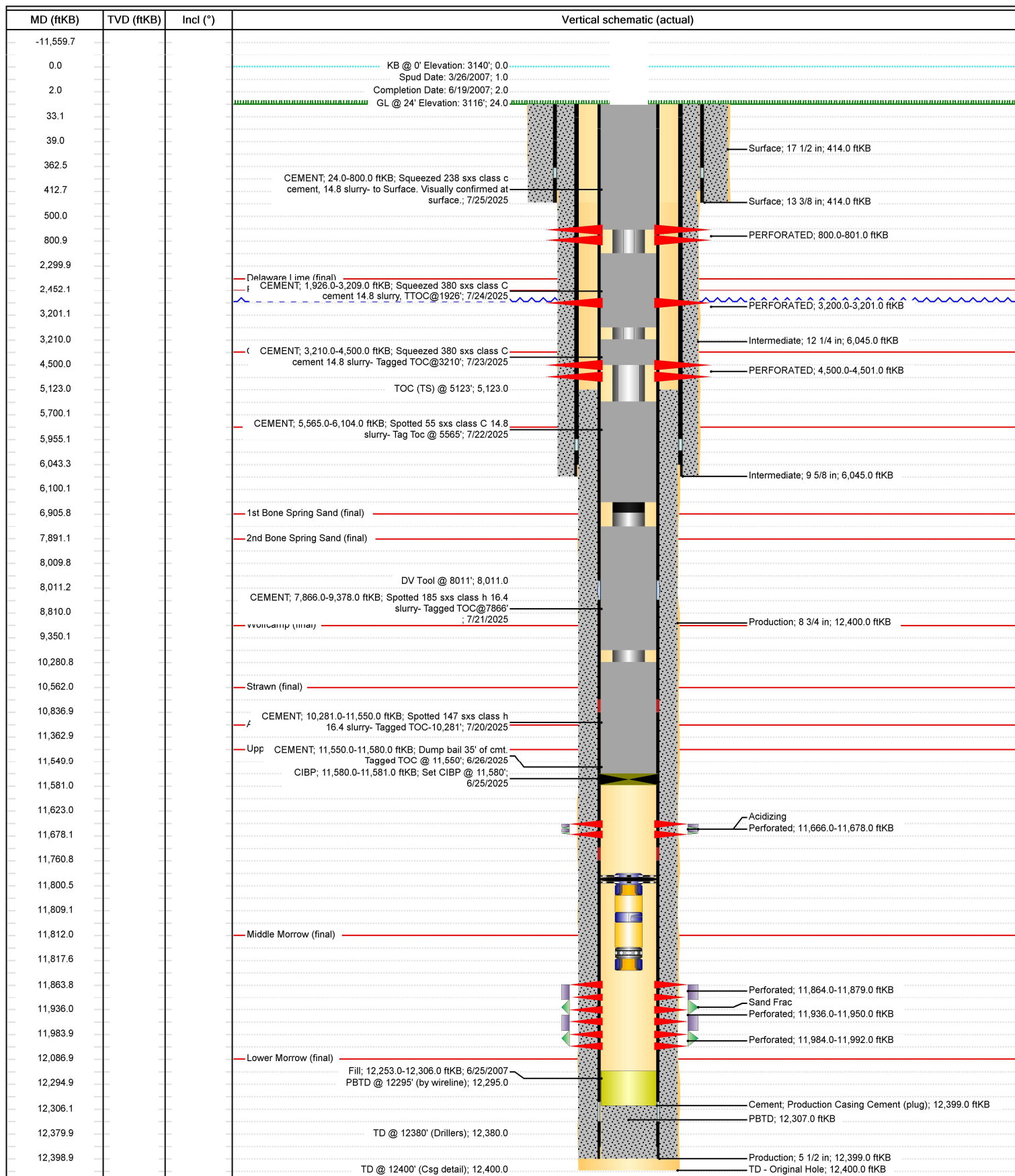
8/15/25: WH cutoff and DHM set.



Schematic - Vertical with Perfs

Well Name: Big Eddy Unit 148

API/UWI 3001535146	SAP Cost Center ID 1138431001	Permit Number	State/Province New Mexico	County Eddy
Surface Location T22S-R28E-S06	Spud Date 3/26/2007 12:30	Original KB Elevation (ft) 3,140.00	Ground Elevation (ft) 3,116.00	KB-Ground Distance (ft) 24.00



Sante Fe Main Office
Phone: (505) 476-3441

General Information
Phone: (505) 629-6116

Online Phone Directory
<https://www.emnrd.nm.gov/oed/contact-us>

State of New Mexico
Energy, Minerals and Natural Resources
Oil Conservation Division
1220 S. St Francis Dr.
Santa Fe, NM 87505

CONDITIONS

Action 505310

CONDITIONS

Operator: XTO PERMIAN OPERATING LLC. 6401 HOLIDAY HILL ROAD MIDLAND, TX 79707	OGRID: 373075
	Action Number: 505310
	Action Type: [C-103] Sub. Plugging (C-103P)

CONDITIONS

Created By	Condition	Condition Date
gcordero	None	9/18/2025