

Submit a Copy To Appropriate District  
Office  
District I – (575) 393-6161  
1625 N. French Dr., Hobbs, NM 88240  
District II – (575) 748-1283  
811 S. First St., Artesia, NM 88210  
District III – (505) 334-6178  
1000 Rio Brazos Rd., Aztec, NM 87410  
District IV – (505) 476-3460  
1220 S. St. Francis Dr., Santa Fe, NM  
87505

State of New Mexico  
Energy, Minerals and Natural Resources

Form C-103  
Revised July 18, 2013

OIL CONSERVATION DIVISION  
1220 South St. Francis Dr.  
Santa Fe, NM 87505

WELL API NO. 30-045-24633	
5. Indicate Type of Lease STATE <input checked="" type="checkbox"/> FEE <input type="checkbox"/>	
6. State Oil & Gas Lease No.	
7. Lease Name or Unit Agreement Name TRS-EVI	
8. Well Number 001	
9. OGRID Number 236452	
10. Pool name or Wildcat CHA CHA GALLUP	
11. Elevation (Show whether DR, RKB, RT, GR, etc.)	

SUNDRY NOTICES AND REPORTS ON WELLS (DO NOT USE THIS FORM FOR PROPOSALS TO DRILL OR TO DEEPEN OR PLUG BACK TO A DIFFERENT RESERVOIR. USE "APPLICATION FOR PERMIT" (FORM C-101) FOR SUCH PROPOSALS.)	
1. Type of Well: Oil Well <input checked="" type="checkbox"/> Gas Well <input type="checkbox"/> Other <input type="checkbox"/>	
2. Name of Operator Petro Mex LLC	
3. Address of Operator PO Box 6724, Farmington, NM 87499	
4. Well Location Unit Letter H: 2130 feet from the N line and 810 feet from the E line Section 11 Township 29N Range 15W NMPM San Juan	
11. Elevation (Show whether DR, RKB, RT, GR, etc.)	

12. Check Appropriate Box to Indicate Nature of Notice, Report or Other Data

NOTICE OF INTENTION TO:		SUBSEQUENT REPORT OF:	
PERFORM REMEDIAL WORK <input type="checkbox"/>	PLUG AND ABANDON <input checked="" type="checkbox"/>	REMEDIAL WORK <input type="checkbox"/>	ALTERING CASING <input type="checkbox"/>
TEMPORARILY ABANDON <input type="checkbox"/>	CHANGE PLANS <input type="checkbox"/>	COMMENCE DRILLING OPNS. <input type="checkbox"/>	P AND A <input type="checkbox"/>
PULL OR ALTER CASING <input type="checkbox"/>	MULTIPLE COMPL <input type="checkbox"/>	CASING/CEMENT JOB <input type="checkbox"/>	
DOWNHOLE COMMINGLE <input type="checkbox"/>			
CLOSED-LOOP SYSTEM <input type="checkbox"/>			
OTHER: <input type="checkbox"/>		OTHER: <input type="checkbox"/>	

13. Describe proposed or completed operations. (Clearly state all pertinent details, and give pertinent dates, including estimated date of starting any proposed work). SEE RULE 19.15.7.14 NMAC. For Multiple Completions: Attach wellbore diagram of proposed completion or recompletion.

NMOCD plans to plug this well in accordance with the attached documents and any COA added.

Spud Date:

Rig Release Date:

I hereby certify that the information above is true and complete to the best of my knowledge and belief.

SIGNATURE: Ethan Wakefield

TITLE: Authorized Representative

DATE 9/29/25

Type or print name: Ethan Wakefield

E-mail address: e.wakefield@dwsrigs.com

PHONE: 405-343-7736

**For State Use Only**

APPROVED BY: \_\_\_\_\_ TITLE \_\_\_\_\_ DATE \_\_\_\_\_

Conditions of Approval (if any):

## **PETRO MEX LLC**

### **Plug And Abandonment Procedure**

#### **TRS-EVI #001**

2130' FNL & 810' FEL, Section 11, 29N, 15W

San Juan County, NM / API: 30-045-24633

1. Hold pre-job safety meeting. Comply with all NMOCD, BLM safety and environmental regulations. Test rig anchors prior to moving in rig if not rigged to base beam.
2. Perform spiral gas check. Check casing, tubing, and Bradenhead pressures.
3. Remove existing piping on casing valve. RU blow lines from casing valves and begin blowing down casing pressure. Perform mandatory 40 bbls well kill. If a different fluid or amount is required kill well as necessary. Ensure the well is dead or on a vacuum.
4. ND wellhead and NU BOP. Function test BOP.
5. P/U 4-1/2" bit or casing scraper on 2-3/8" work string and round trip as deep as possible above top perforation at 4,385'.
6. P/U 4-1/2" CR, TIH and set CR at +/- 4,335'. Pressure test tubing to 1000 psi. Sting out of CR. Load hole and pressure test casing to 800 psi. If casing does not test, then spot or tag subsequent plugs as appropriate. POOH w/ tubing.
  - a. Plug #1 (under CR) may be pumped prior to CBL.
7. RU wireline and run CBL with 500 psi on casing from CR at 4,335' to surface to identify TOC. Adjust plugs as necessary for new TOC. Email log copy to

Diede, Loren, [Loren.Diede@emnrd.nm.gov](mailto:Loren.Diede@emnrd.nm.gov) and to Gilbert Cordero at [gilbert.cordero@emnrd.nm.gov](mailto:gilbert.cordero@emnrd.nm.gov) upon completion of logging operations.

8. Rig up to pump cement down tubing. Pump water to establish rate down tubing.
9. Circulate wellbore.

**NOTE: All plugs include excess footage to meet requirements.**

**10. Plug 1 (Perforations, Top 4,335', 15 Sacks Class G Cement)**

Mix 45 sx Class G cement and squeeze below CR to cover the Gallup perforations.

**11. Plug 2 (Perforations and Gallup Formation Top, 4,335'- 3,990', 27 Sacks Class G Cement)**

Mix 27 sx Class G cement and spot a balanced plug inside casing to cover the Gallup perforations and formation top.

**12. Plug 3 (DV Tool and Mancos Formation Top, 3,442'-3,006', 33 Sacks Class G Cement)**

Mix 33 sx Class G cement and spot a balanced plug inside casing to cover the DV tool and Mancos formation top.

**13. Plug 4 (Mesa Verde Formation Top, 1,970'-1,820', 12 Sacks Class G Cement)**

Mix 12 sx Class G cement and spot a balanced plug inside casing to cover the Mesa Verde formation top.

**14. Plug 5 (Chacra Formation Top, 1,346'-1,196', 12 Sacks Class G Cement)**

Mix 12 sx Class G cement and spot a balanced plug inside casing to cover the Chacra formation top.

**15. Plug 6 (Surface Casing Shoe and Pictured Cliffs Formation Top, 370'-Surface, 144 Sacks Class G Cement)**

Attempt to pressure test the bradenhead annulus to 300 psi; note the volume to load. If BH annulus holds pressure, then establish circulation out casing valve with water. If BH annulus does not test, then perforate at the appropriate depth and attempt to circulate cement to surface filling the casing from 370' and the annulus from the squeeze holes to surface. Shut in well and WOC.

**16. ND cementing valves and cut off wellhead. Fill annuli with cement as necessary. Install P&A marker to comply with regulations. Record GPS coordinate for P&A marker on tower report. Photograph P&A marker in place. RD, MOL and restore location per BLM stipulations.**



## Existing Wellbore Diagram

PETRO MEX LLC  
TRS-EVI #001  
API: 30-045-24633  
San Juan County, New Mexico

### Surface Casing

8-5/8" 24# @ 298'  
OH: 12-1/4"

### Formation

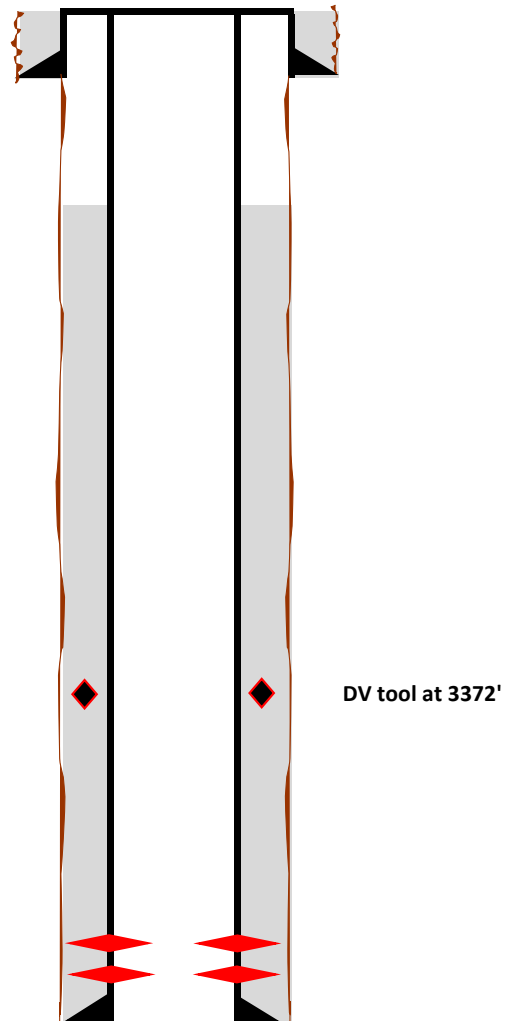
Pictured Cliffs - 320'  
Chacra - 1296'  
Mesa Verde - 1920'  
Mancos - 3106'  
DV Tool - 3372'  
Gallup - 4090'

### Production Casing

4-1/2" 10.5# @ 4690'  
OH: 7-7/8"

### Perforations

4385' to 4458'





## Proposed Wellbore Diagram

PETRO MEX LLC  
 TRS-EVI #001  
 API: 30-045-24633  
 San Juan County, New Mexico

### Plug 5

Determine by CBL  
 1346' to 1196'  
 150 foot plug  
 12 Sacks of Class G Cement

### Plug 4

Determine by CBL  
 1970' to 1820'  
 150 foot plug  
 12 Sacks of Class G Cement

### Plug 3

Determine by CBL  
 3422' to 3006'  
 416 foot plug  
 33 Sacks of Class G Cement

### Plug 2

Above CR  
 4335' to 3990'  
 345 foot plug  
 27 sacks of Class G Cement

### Plug 1

SQ Under CR  
 Top 4335'  
 15 sacks Class G Cement

### Surface Casing

8-5/8" 24# @ 298'  
 OH: 12-1/4"

### Formation

Pictured Cliffs - 320'  
 Chacra - 1296'  
 Mesa Verde - 1920'  
 Mancos - 3106'  
 DV Tool - 3372'  
 Gallup - 4090'

### Production Casing

4-1/2" 10.5# @ 4690'  
 OH: 7-7/8"

### Perforations

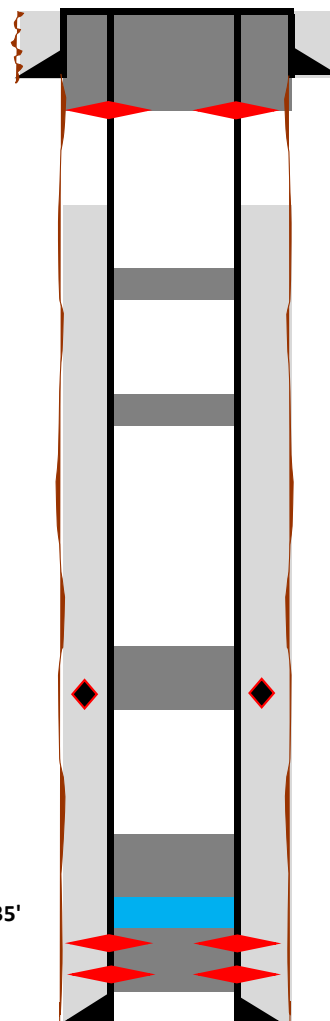
4385' to 4458'

### Plug 6

SQ from Surface  
 Perforate at 370'  
 370' to Surface  
 370 foot plug  
 144 Sacks of Class G Cement

CR @ 4335'

DV tool at 3372'



Sante Fe Main Office  
Phone: (505) 476-3441

General Information  
Phone: (505) 629-6116

Online Phone Directory  
<https://www.emnrd.nm.gov/ocd/contact-us>

State of New Mexico  
Energy, Minerals and Natural Resources  
Oil Conservation Division  
1220 S. St Francis Dr.  
Santa Fe, NM 87505

DEFINITIONS

Action 511933

DEFINITIONS

Operator: J.A. Drake Well Service Inc. (OPG Vendor) 607 W. Pinon St Farmington, NM 87401	OGRID: 333581
	Action Number: 511933
	Action Type: [UF-OMA] NOI Plug & Abandon Well (UF-OMA-C-103F)

DEFINITIONS

The OCD Mitigation Activity (OMA) forms are a subset of the OCD's forms exclusively designed for activities related to State of New Mexico's contracted evaluation, plugging, decommissioning, remediation, salvage and reclamation activities. Specifically, these forms are typically used where the OCD has acquired a hearing order allowing the OCD to perform mitigation activities on wells and associated facilities that no longer have an authorized or viable operator to perform the necessary work. These forms are not to be utilized for any other purpose.

Sante Fe Main Office  
Phone: (505) 476-3441

General Information  
Phone: (505) 629-6116

Online Phone Directory  
<https://www.emnrd.nm.gov/ocd/contact-us>

State of New Mexico  
Energy, Minerals and Natural Resources  
Oil Conservation Division  
1220 S. St Francis Dr.  
Santa Fe, NM 87505

QUESTIONS

Action 511933

QUESTIONS

Operator: J.A. Drake Well Service Inc. (OPG Vendor) 607 W. Pinon St Farmington, NM 87401	OGRID: 333581
	Action Number: 511933
	Action Type: [UF-OMA] NOI Plug & Abandon Well (UF-OMA-C-103F)

QUESTIONS

Prerequisites	
[OGRID] Well Operator	[236452] PETRO MEX LLC
[API] Well Name and Number	[30-045-24633] TRS-EVI #001
Well Status	Active



Sante Fe Main Office  
Phone: (505) 476-3441

General Information  
Phone: (505) 629-6116

Online Phone Directory  
<https://www.emnrd.nm.gov/ocd/contact-us>

State of New Mexico  
Energy, Minerals and Natural Resources  
Oil Conservation Division  
1220 S. St Francis Dr.  
Santa Fe, NM 87505

CONDITIONS

Action 511933

CONDITIONS

Operator: J.A. Drake Well Service Inc. (OPG Vendor) 607 W. Pinon St Farmington, NM 87401	OGRID: 333581
	Action Number: 511933
	Action Type: [UF-OMA] NOI Plug & Abandon Well (UF-OMA-C-103F)

CONDITIONS

Created By	Condition	Condition Date
loren.diede	Notify NMOCD 24 hours prior to beginning P&A operations.	10/9/2025
loren.diede	Submit CBL tif file to NMOCD for upload into the Well Log File.	10/9/2025
loren.diede	Submit photo and GPS coordinates of the P&A marker with the final P&A reports. The API# on the marker must be clearly legible.	10/9/2025