

Submit a Copy To Appropriate District:
Office
District I – (575) 393-6161
1625 N. French Dr., Hobbs, NM 88240
District II – (575) 748-1283
811 S. First St., Artesia, NM 88210
District III – (505) 334-6178
1000 Rio Brazos Rd., Aztec, NM 87410
District IV – (505) 476-3460
1220 S. St. Francis Dr., Santa Fe, NM
87505

State of New Mexico
Energy, Minerals and Natural Resources

Form C-103
Revised July 18, 2013

OIL CONSERVATION DIVISION
1220 South St. Francis Dr.
Santa Fe, NM 87505

WELL API NO. 30-045-26203	
5. Indicate Type of Lease STATE <input checked="" type="checkbox"/> FEE <input type="checkbox"/>	
6. State Oil & Gas Lease No.	
7. Lease Name or Unit Agreement Name KIRTLAND 18	
8. Well Number 001	
9. OGRID Number 236452	
10. Pool name or Wildcat CHA CHA GALLUP	
11. Elevation (Show whether DR, RKB, RT, GR, etc.)	

SUNDRY NOTICES AND REPORTS ON WELLS (DO NOT USE THIS FORM FOR PROPOSALS TO DRILL OR TO DEEPEN OR PLUG BACK TO A DIFFERENT RESERVOIR. USE "APPLICATION FOR PERMIT" (FORM C-101) FOR SUCH PROPOSALS.)	
1. Type of Well: Oil Well <input checked="" type="checkbox"/> Gas Well <input type="checkbox"/> Other <input type="checkbox"/>	
2. Name of Operator Petro Mex LLC	
3. Address of Operator PO Box 6724, Farmington, NM 87499	
4. Well Location Unit Letter A: 990 feet from the N line and 360 feet from the E line Section 18 Township 29N Range 14W NMPM San Juan	

12. Check Appropriate Box to Indicate Nature of Notice, Report or Other Data

NOTICE OF INTENTION TO:		SUBSEQUENT REPORT OF:	
PERFORM REMEDIAL WORK <input type="checkbox"/>	PLUG AND ABANDON <input checked="" type="checkbox"/>	REMEDIAL WORK <input type="checkbox"/>	ALTERING CASING <input type="checkbox"/>
TEMPORARILY ABANDON <input type="checkbox"/>	CHANGE PLANS <input type="checkbox"/>	COMMENCE DRILLING OPNS. <input type="checkbox"/>	P AND A <input type="checkbox"/>
PULL OR ALTER CASING <input type="checkbox"/>	MULTIPLE COMPL <input type="checkbox"/>	CASING/CEMENT JOB <input type="checkbox"/>	
DOWNHOLE COMMINGLE <input type="checkbox"/>			
CLOSED-LOOP SYSTEM <input type="checkbox"/>			
OTHER: <input type="checkbox"/>		OTHER: <input type="checkbox"/>	

13. Describe proposed or completed operations. (Clearly state all pertinent details, and give pertinent dates, including estimated date of starting any proposed work). SEE RULE 19.15.7.14 NMAC. For Multiple Completions: Attach wellbore diagram of proposed completion or recompletion.

NMOCD plans to plug this well in accordance with the attached documents and any COA added.

Spud Date:

Rig Release Date:

I hereby certify that the information above is true and complete to the best of my knowledge and belief.

SIGNATURE: Ethan Wakefield

TITLE: Authorized Representative

DATE 9/29/25

Type or print name: Ethan Wakefield

E-mail address: e.wakefield@dwsrigs.com

PHONE: 405-343-7736

For State Use Only

APPROVED BY: _____ TITLE _____ DATE _____

Conditions of Approval (if any):

PETRO MEX LLC

Plug And Abandonment Procedure

KIRTLAND 18 #001

990' FNL & 360' FEL, Section 18, 29N, 14W

San Juan County, NM / API: 30-045-26203

1. Hold pre-job safety meeting. Comply with all NMOCD, BLM safety and environmental regulations. Test rig anchors prior to moving in rig if not rigged to base beam.
2. Perform spiral gas check. Check casing, tubing, and Bradenhead pressures.
3. Remove existing piping on casing valve. RU blow lines from casing valves and begin blowing down casing pressure. Perform mandatory 40 bbls well kill. If a different fluid or amount is required kill well as necessary. Ensure the well is dead or on a vacuum.
4. ND wellhead and NU BOP. Function test BOP.
5. P/U 4-1/2" bit or casing scraper on 2-3/8" work string and round trip as deep as possible above top perforation at 4,208'.
6. P/U 4-1/2" CR, TIH and set CR at +/- 4,158'. Pressure test tubing to 1000 psi. Sting out of CR. Load hole and pressure test casing to 800 psi. If casing does not test, then spot or tag subsequent plugs as appropriate. POOH w/ tubing.
 - a. Plug #1 (under CR) may be pumped prior to CBL.
7. RU wireline and run CBL with 500 psi on casing from CR at 4,158' to surface to identify TOC. Adjust plugs as necessary for new TOC. Email log copy to

Diede, Loren, Loren.Diede@emnrd.nm.gov and to Gilbert Cordero at gilbert.cordero@emnrd.nm.gov upon completion of logging operations.

8. Rig up to pump cement down tubing. Pump water to establish rate down tubing.
9. Circulate wellbore.

NOTE: All plugs include excess footage to meet requirements.

10. Plug 1 (Perforations, Top 4,158', 15 Sacks Class G Cement)

Mix 45 sx Class G cement and squeeze below CR to cover the Gallup perforations.

11. Plug 2 (Perforations and Gallup Formation Top, 4,158'-4,058', 8 Sacks Class G Cement)

Mix 8 sx Class G cement and spot a balanced plug inside casing to cover the Gallup formation top.

12. Plug 3 (DV Tool and Mancos Formation Top, 3,343'-3,136', 17 Sacks Class G Cement)

Mix 17 sx Class G cement and spot a balanced plug inside casing to cover the DV tool and Mancos formation top.

13. Plug 4 (Mesa Verde Formation Top, 2,074'-1,924', 12 Sacks Class G Cement)

Mix 12 sx Class G cement and spot a balanced plug inside casing to cover the Mesa Verde formation top.

14. Plug 5 (Chacra Formation Top, 1,463'-1,313', 12 Sacks Class G Cement)

Mix 12 sx Class G cement and spot a balanced plug inside casing to cover the Chacra formation top.

15. Plug 6 (Surface Casing Shoe and Pictured Cliffs Formation Top, 500'-Surface, 205 Sacks Class G Cement)

Attempt to pressure test the bradenhead annulus to 300 psi; note the volume to load. If BH annulus holds pressure, then establish circulation out casing valve with water. If BH annulus does not test, then perforate at the appropriate depth and attempt to circulate cement to surface filling the casing from 405' and the annulus from the squeeze holes to surface. Shut in well and WOC.

16. ND cementing valves and cut off wellhead. Fill annuli with cement as necessary. Install P&A marker to comply with regulations. Record GPS coordinate for P&A marker on tower report. Photograph P&A marker in place. RD, MOL and restore location per BLM stipulations.



Existing Wellbore Diagram

PETRO MEX LLC
KIRTLAND 18 #001
API: 30-045-26203
San Juan County, New Mexico

Surface Casing

8-5/8" 23# @ 375'
OH: 12-1/4"

Formation

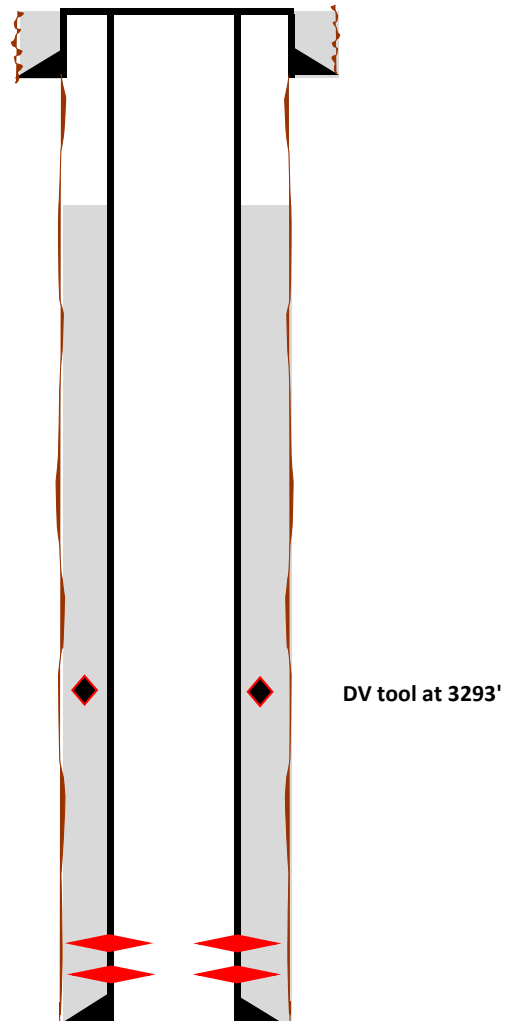
Pictured Cliffs - 450'
Chacra - 1413'
Mesa Verde - 2024'
Mancos - 3236'
DV Tool - 3293'
Gallup - 4189'

Production Casing

4-1/2" 10.5# @ 4710'
OH: 7-7/8"

Perforations

4208' to 4668'





Proposed Wellbore Diagram

PETRO MEX LLC
KIRTLAND 18 #001
API: 30-045-26203
San Juan County, New Mexico

Plug 5

Determine by CBL
1463' to 1313'
150 foot plug
12 Sacks of Class G Cement

Plug 4

Determine by CBL
2074' to 1924'
150 foot plug
12 Sacks of Class G Cement

Plug 3

Determine by CBL
3343' to 3136'
207 foot plug
17 Sacks of Class G Cement

Plug 2

Above CR
4158' to 4058'
100 foot plug
8 sacks of Class G Cement

Plug 1

SQ Under CR
Top 4158'
45 sacks Class G Cement

Surface Casing

8-5/8" 23# @ 375'
OH: 12-1/4"

Formation

Pictured Cliffs - 450'
Chacra - 1413'
Mesa Verde - 2024'
Mancos - 3236'
DV Tool - 3293'
Gallup - 4189'

Production Casing

4-1/2" 10.5# @ 4710'
OH: 7-7/8"

Perforations

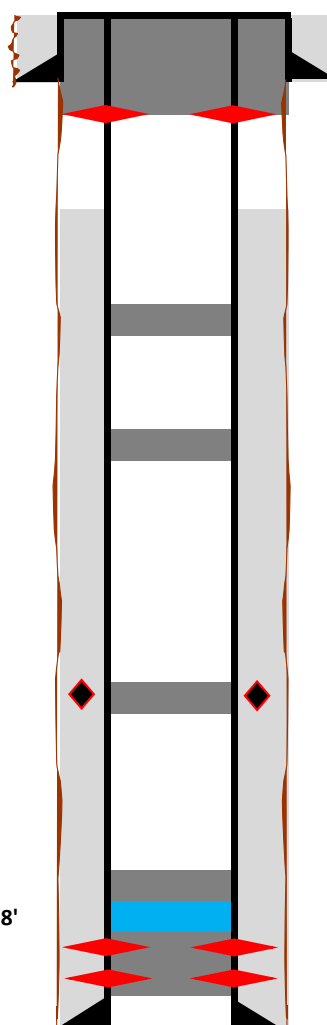
4208' to 4668'

Plug 6

SQ from Surface
Perforate at 405'
500' to Surface
500 foot plug
205 Sacks of Class G Cement

CR @ 4158'

DV tool at 3293'



Sante Fe Main Office
Phone: (505) 476-3441

General Information
Phone: (505) 629-6116

Online Phone Directory
<https://www.emnrd.nm.gov/ocd/contact-us>

State of New Mexico
Energy, Minerals and Natural Resources
Oil Conservation Division
1220 S. St Francis Dr.
Santa Fe, NM 87505

DEFINITIONS

Action 510599

DEFINITIONS

Operator: J.A. Drake Well Service Inc. (OPG Vendor) 607 W. Pinon St Farmington, NM 87401	OGRID: 333581
	Action Number: 510599
	Action Type: [UF-OMA] NOI Plug & Abandon Well (UF-OMA-C-103F)

DEFINITIONS

The OCD Mitigation Activity (OMA) forms are a subset of the OCD's forms exclusively designed for activities related to State of New Mexico's contracted evaluation, plugging, decommissioning, remediation, salvage and reclamation activities. Specifically, these forms are typically used where the OCD has acquired a hearing order allowing the OCD to perform mitigation activities on wells and associated facilities that no longer have an authorized or viable operator to perform the necessary work. These forms are not to be utilized for any other purpose.

Sante Fe Main Office
Phone: (505) 476-3441

General Information
Phone: (505) 629-6116

Online Phone Directory
<https://www.emnrd.nm.gov/ocd/contact-us>

State of New Mexico
Energy, Minerals and Natural Resources
Oil Conservation Division
1220 S. St Francis Dr.
Santa Fe, NM 87505

QUESTIONS

Action 510599

QUESTIONS

Operator: J.A. Drake Well Service Inc. (OPG Vendor) 607 W. Pinon St Farmington, NM 87401	OGRID: 333581
	Action Number: 510599
	Action Type: [UF-OMA] NOI Plug & Abandon Well (UF-OMA-C-103F)

QUESTIONS

Prerequisites	
[OGRID] Well Operator	[236452] PETRO MEX LLC
[API] Well Name and Number	[30-045-26203] KIRTLAND 18 #001
Well Status	Active

Sante Fe Main Office
Phone: (505) 476-3441

General Information
Phone: (505) 629-6116

Online Phone Directory
<https://www.emnrd.nm.gov/ocd/contact-us>

State of New Mexico
Energy, Minerals and Natural Resources
Oil Conservation Division
1220 S. St Francis Dr.
Santa Fe, NM 87505

CONDITIONS

Action 510599

CONDITIONS

Operator: J.A. Drake Well Service Inc. (OPG Vendor) 607 W. Pinon St Farmington, NM 87401	OGRID: 333581
	Action Number: 510599
	Action Type: [UF-OMA] NOI Plug & Abandon Well (UF-OMA-C-103F)

CONDITIONS

Created By	Condition	Condition Date
loren.diede	Notify NMOCD 24 hours prior to beginning P&A operations.	10/9/2025
loren.diede	Submit CBL tif file to NMOCD for upload into the Well Log File.	10/9/2025
loren.diede	Submit photo and GPS coordinates of the P&A marker with the final P&A reports. The API# on the marker must be clearly legible.	10/9/2025